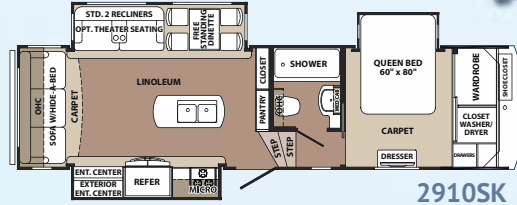
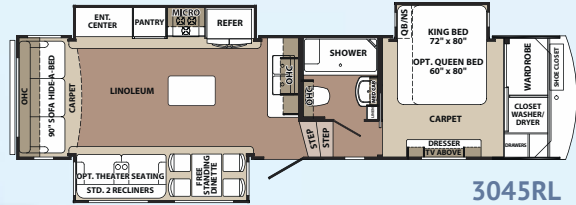


Blue Ridge

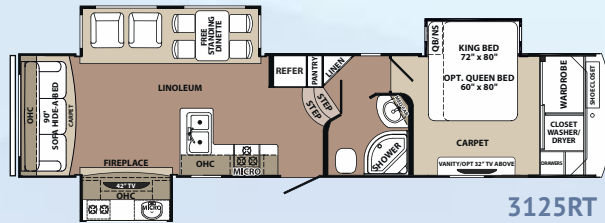
by Forest River



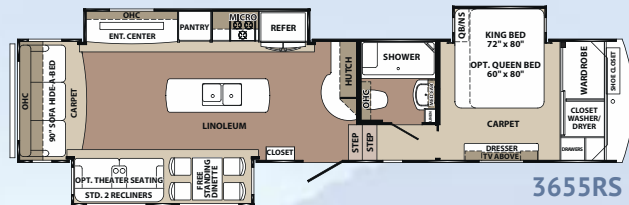
2910SK



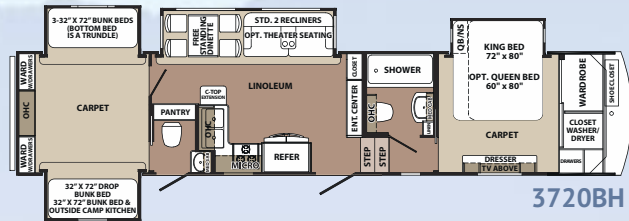
3045RL



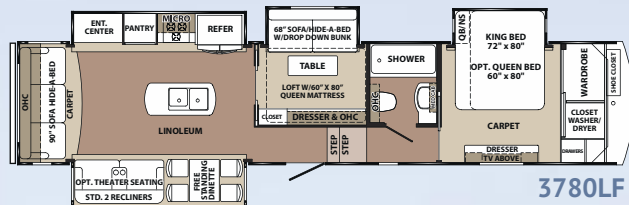
3125RT



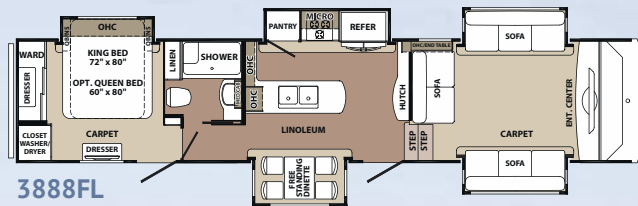
3655RS



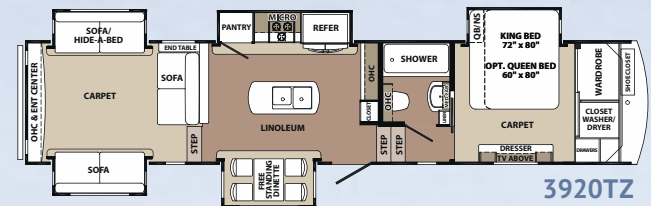
3720BH



3780LF



3888FL



3920TZ

WIDE BODY FIFTH WHEELS

WIDE BODY	2910SK	3045RL	3125RT	3655RS	3720BH	3780LF	3888FL	3920TZ
Length (Center of Pin to Rear of Bumper)	33' 7"	37' 3"	38' 1"	40' 8"	41' 1"	41' 2"	42' 1"	41' 6"
Shipping Weight	11230	11888	11904	12736	13957	13341	TBD	13637
UVW	11289	11947	11963	12795	14016	13400	TBD	13696
Hitch Weight	2270	2345	2136	2450	2303	2583	TBD	2588
GAWR	12000	12000	12000	13680	13680	13680	13680	13680
GVWR	14270	14345	14136	16130	15983	16263	TBD	16268
Cargo Carrying Capacity (CCC)	2981	2398	2173	3335	1967	2863	TBD	2572
Exterior Height	13' 6"	13' 6"	13' 6"	13' 6"	13' 6"	13' 6"	13' 6"	13' 6"
Exterior Width	100"	100"	100"	100"	100"	100"	100"	100"
Interior Height (Bedroom)	81"	81"	81"	81"	81"	81"	106 1/2"	81"
Interior Height (Living area)	106 1/2"	106 1/2"	106 1/2"	106 1/2"	106 12"	106 1/2"	81"	88"
Tire Size ST235/80R16E	■	■	■	■	■	■	■	■
Brake Size	12"	12"	12"	12"	12"	12"	12"	12"
Fresh Water	64 gal.	64 gal.	64 gal.	64 gal.	64 gal.	64 gal.	64 gal.	64 gal.
Waste Water	110 gal.	120 gal.	120 gal.	110 gal.	160 gal.	120 gal.	120 gal.	120 gal.
Water Heater	10 gal.	10 gal.	10 gal.	10 gal.	10 gal.	10 gal.	10 gal.	10 gal.
Furnace	42000 BTU	42000 BTU	42000 BTU	42000 BTU	42000 BTU	42000 BTU	42000 BTU	42000 BTU
Patio Awning	14'	16'	19'	19'	16'	18'	14'	16'
Exterior Storage (Cu. ft.)	105	118	113	118	120	118	107	210

GVWR (Gross Vehicle Weight Rating) - is the maximum permissible weight of the unit when fully loaded. It includes all weights, inclusive of all fluids, cargo, optional equipment and accessories. For safety and product performance do NOT exceed the GVWR.

GAWR (Gross Axle Weight Rating) - is the maximum permissible weight, including cargo, fluids, optional equipment and accessories that can be safely supported by a combination of all axles.

UVW (Unloaded Vehicle Weight)** - is the typical weight of the unit as manufactured at the factory. It includes all weight at the unit's axle(s) and tongue or pin and LP Gas. The UVW does not include cargo, fresh potable water, additional optional equipment or dealer installed accessories.

CCC (Cargo Carrying Capacity)** - is the amount of weight available for fresh potable water, cargo, additional optional equipment and accessories. CCC is equal to GVWR minus UVW. Available CCC should accommodate fresh potable water (8.3 lbs. per gallon). Before filling the fresh water tank, empty the black and gray tanks to provide for more cargo capacity.

*Estimated Average based on standard build optional equipment.

**Estimated average based on standard build optional equipment. Each Forest River RV is weighed at the manufacturing facility prior to shipping. A label identifying the unloaded vehicle weight of the actual unit and the cargo carrying capacity is applied to every Forest River RV prior to leaving our facilities.

The load capacity of your unit is designated by weight, not by volume, so you cannot necessarily use all available space when loading your unit.

Blue Ridge

by Forest River

WIDE BODY FIFTH WHEELS STANDARD FEATURES

STANDARD FEATURES

INTERIOR

- Solid Hardwood Maple Raised Panel Glazed Cabinet Doors and Drawers
- Crown Molding
- Solid Wood Drawer Boxes (Baltic Birch)
- Ball Bearing, Full Extension Drawer Guides
- Beauflor® Flooring (7-Year Cold Crack warranty)
- Residential Carpet
- Residential Cabinet Hardware and Accents
- Satin Nickel Plumbing Fixtures
- Decorative Slide Room Fascia Frame
- Solid Wood Exit Assist Handle
- Fireplace

GALLEY

- LG Solid Surface Polished Counter Tops with Under Mount Sink
- Double Bowl Stainless Steel Kitchen Sink
- High Rise "J" Spout Kitchen Faucet
- Fantastic Fan with Rain Sensor
- Flush Floor Kitchen Slide-out

LIGHTING

- LED Running and Tail Lights
- LED Lighting Throughout
- Decorative Ceiling Light above Dinette
- Hanging Lighting above Sink with Decorative Mount
- Ceiling Fan
- Exterior LED Docking Lights (2 Mounted into front cap)
- Exterior Security Lights (2)
- Exterior Amber Patio Light
- LED Awning Light Strip

FURNITURE/WINDOW COVERINGS

- Swivel/Glider Recliners (2)
- Free Standing Dinette Table with Dual Leafs and (2) Chairs with Flip-up Storage (2 Folding chairs)
- Three Seat Rear Sofa with Hide-A-Bed
- Bonded Leather Sofa and Recliners
- Night Shades
- Designer Fabric Window Treatments (Where available)

BATHROOM

- 12 Volt Power Roof Vent
- HPL Vanity Top with Oversized Residential Bowl
- Porcelain Toilet with Foot Flush
- Mega or Radius Shower
- Glass Shower Door
- Shower Skylight/Dome
- Adjustable Shower Head

- Medicine Cabinet with Mirrored Door
- Dedicated Heat and A/C Duct

BEDROOM

- Premium, Innerspring Mattress
- King Bed (N/A 2910SK)
- Designer Headboard, Bedspread, Pillows and Sham
- Full Height Hanging Wardrobe
- French Mirrored Closet Doors
- Stackable/Combination Washer/Dryer Prep
- Shoe Caddy
- Chest of Drawers
- Underbed Storage
- (2) Bedside Windows in Slide-Out
- (2) Reading Light with Individual Controls
- (2) Bedside Power Outlets

APPLIANCES

- 8 Cu. ft. Double Door Refrigerator (3125RT)
- Residential Refrigerator with 2000 Watt Inverter (2910SK, 3045RL, 3655RS, 3720BH, 3780 LF, 3888FL, 3920TZ)
- 3-Burner, High Output Range with 22" Oven
- Range Cover
- 30" Convection Microwave
- 42K BTU LP Furnace
- Wire and Frame for Second A/C
- Dometic Quiet Cool 15K Ducted AC
- 10 Gal. Gas/electric DSI Water Heater
- "Shurflo" On-demand High Output Water Pump (3g/min @ 55 psi)
- LP Leak Detector
- Carbon Monoxide Detector

ELECTRONICS

- 5-Function Remote Control with Key Fob
- Key Fob Operates Slides, Awning, Patio Light, Front Jacks and Rear Jacks
- 42" LED TV with HD Steel Swing Arm (55" - 3888FL, 3920TZ)
- Furrion Theater System with Bluetooth, HDMI, DVD, AM/FM, Weather Band
- Digital TV Antenna with Signal Booster
- Cable TV Hook-ups (Bedroom)
- Cable TV Hook-up Exterior Garage Bulkhead
- Satellite Prep (Roof mounted)
- Exterior Flip-down Speakers

EXTERIOR

- High Gloss Pigmented Gel Coat Fiberglass Exterior on All Walls
- Front Cap: Molded Two Color Painted High Gloss Gel Coat Fiberglass with LED Light Accents
- Front Cap Design: Engineered with Extended Turning Radius (Chamfered front)

- Laminated Front Bulkhead with High Gloss Gel Coat Fiberglass
- Slam Latch 1.5" Thick Baggage Doors with High Gloss Gel Coat Fiberglass (N/A LP door)
- Slide End Walls: Laminated with High Gloss Gel Coat Fiberglass
- 32" x 76" Entry and Screen Door with High Gloss Gel Coat Fiberglass
- 45° Angled Skirting
- Automotive Hehr Frameless Windows
- Hydraulic Slide Room Power
- Individual Slide Room Selector Switches
- Roof Ladder
- Electric Awning with LED Light Strip
- Entry Assist Handle (XL-Folding)
- 1.5" Aluminum Black Belt Rail with Caps (No exposed screws)
- Roto-cast Spun Seamless Water/Waste Tanks
- PEX Plumbing System
- Enclosed, Heated Underbelly and Heated Tanks (Forced air heat)
- Dual Roof Vents
- LP Quick Disconnect

SLIDE ROOM SEAL/GASKET SYSTEM

- Aluminum "H" Frame Slide Room Perimeter
- Dual Neoprene Squeegee Seals
- Exterior and Interior "D" Seals
- Exterior "H" Seals

UTILITY DOCKING COMPARTMENT

- 12 Volt Light
- Outside Shower (Hot and cold)
- Black Tank Flush System
- Water Heater Bypass Valve
- Full Coach Water Filtration System
- Winterizing Bypass System
- Protected/Insulated Pull Waste Valves
- Waste Hose Storage Tube
- Slam Latch Baggage Doors (1.5" Thick)

CHASSIS/FOUNDATION

- I-beam "Z" Frame Powder Coated Chassis
- Chamfered Frame Technology
- 10" Beams: 2910SK, 3045RL, 3125RT
- 12" Beams: 3655RS, 3720BH, 3780LF, 3888FL, 3920TZ
- Dual 6K Axles: 2910SK, 3045RL, 3125RT
- Dual 7K Axles: 3655RS, 3720BH, 3780LF, 3888FL, 3920TZ
- Easy Lube Hubs
- MOR/ryde 3000 Suspension System
- (8) Lug Hubs
- Aluminum Rims 16"
- Radial Tires (E-rated)
- Spare Tire (Inside storage mount)
- Hydraulic Front Jacks
- Electric Rear Stabilizer Jacks

- Triple Steel Entry Steps (2910SK, 3045RL, 3125RT)
- Four Steel Entry Steps (3655RS, 3720BH, 3780LF, 3888FL, 3920TZ)
- Flush Floor Slide Design with Steel Ramp and Glide Bar (Main Slide Room)
- Hydraulic Slide System with 2.5" Steel Rams
- Hydraulic Pump Station with Manual Overrides
- 18K Extended Hitch Pin

CONSTRUCTION

- Wide Body Construction
- Sidewalls: 2" Welded Aluminum Framed Vacuum Bonded Laminated Walls
- Roof: 5" Dual Radiused Aluminum Roof Trusses on 16" Centers
- Roof: Alpha Super Flex II TPO Roof Material
- Front Wall: Welded Aluminum Frame
- Rear Wall: 2" Welded Aluminum Frame Vacuum Bonded Laminated Wall
- Main Floor: 2" Vacuum Bond Laminated with Welded Aluminum Trusses
- Bath/Bed Floor/Deck: Welded Aluminum Frame
- Slide Floor: 1" Wood Flooring
- Slide End Walls: 2" Welded Aluminum Frame, Laminated

OPTIONS

INTERIOR

- 18 Cu. ft. Gas/Electric 4-Door Refrigerator (N/A 3125RT)
- 32" LED HD Bedroom TV (3720BH Bunkhouse)
- 39" LED TV (3780LF Bunkhouse only)
- Night Roller Shades
- Theater Seats
- Serta Deluxe Pillow Top Mattress
- Queen Bed with Night Stand (IPO King Bed)
- Hide-a-Bed sofa in Bunkroom
- Dyson DC 35 Vacuum Cleaner
- Oversized U-shaped Sofa Dinette (3720BH only)

INSULATION

- Sidewalls: High Density Block Foam Insulation (R-9)
- Roof: Aluminum Radiant Foil Insulation and Fiberglass Insulation (R-38)
- Main Floor: High Density Block Foam Insulation and Aluminum Radiant Foil Insulation (R-38)
- Sub Floor: ¾" Honey Combed Plastic with Aluminum Radiant Foil Insulation and Direct Forced Air Heat
- Front Cap: Fiberglass Insulation and Aluminum Radiant Foil Insulation (R-38)
- End Wall: High Density Block Foam Insulation (R-9)

ELECTRICAL SYSTEMS

- Centralized Command Center and Monitor Panel
- 70 AMP Converter with Charge Wizard
- 50 AMP Service
- Marine Grade Detachable 50 AMP Power Cord
- 12 Volt Battery Disconnect
- Battery Prep Box (2)
- Solar Prep

EXTERIOR

- "Level Up" One-touch Automatic 6-Point Hydraulic Leveling System
- Dual Pane Frameless Windows
- Generator Prep
- 5.5 KW LP Generator (Includes prep)
- Slide-out Awning Toppers
- Dometic Quiet Cool 13.5 Ducted A/C in Bedroom (Standard on 3888FL, 3920TZ)
- Heat Pump for 15,000 BTU A/C
- Fantastic Fan with Rain Sensor in Bedroom (N/A with Low profile 13.5 BTU AC)
- Rotoflex Pin Box
- Outside Entertainment Center with 32" LED TV
- Tank Heat Pads (12 Volt) (Secondary Heating System)
- Bike Rack

Blue Ridge

58277 State Road 19 South ■ Elkhart, IN 46517 ■ (574) 296-7700
www.forestriverinc.com/blueridge ■ www.forestriveraccessories.com
fb.me/blueridgefifthwheels

All information contained in this brochure is believed to be accurate at the time of publication. However, during the model year, it may be necessary to make revisions and Forest River, Inc., reserves the right to make all such changes without notice, including prices, colors, materials, equipment and specifications as well as the addition of new models and the discontinuance of models shown in this brochure. Therefore, please consult with your Forest River dealer and confirm the existence of any materials, design or specifications that are material to your purchase decision.
©2016 Blue Ridge, a Division of Forest River, Inc., a Berkshire Hathaway company. All rights reserved 9/16

