

Flagstaff

SUPER V, SUPER LITE TRAVEL TRAILERS & FIFTH WHEELS

WE'RE  YOUR
LIGHT WEIGHT
SPECIALISTS
EST. 1974



Flagstaff

SUPER V, SUPER LITE TRAVEL
TRAILERS & FIFTH WHEELS





TODAY, FLAGSTAFF IS COMMITTED TO INSURING THAT OUR CUSTOMERS ENJOY THEIR CAMPING EXPERIENCES. Through the utilization of our experienced work force, a “state of the art” lamination facility, modern production plants and detailed production assembly processes our aim is to continue to provide our customers with the best built product possible at an unmatched value.



THE TRADITION CONTINUES.



29KSWS

Standard flooring

The traditional Flagstaff Super V, Super Lite Travel Trailers and Fifth Wheels continue to provide unsurpassed value and comfort. The spacious interiors offer numerous windows, 80" vaulted ceilings with directional vented air conditioning and extensive interior LED lighting throughout. Rich with appointments like the flush mount sink and cutting board, a stove top with glass cover, 22" oven and distinctive Driftwood or Maple cabinets with solid wood doors and drawer fronts throughout add to the tremendous value provided.

Also new this year is a outstanding exterior standard with bonded framless windows, polished alloy rims, a new automotive front window (where applicable), a standard High Gloss White exterior or an optional High Gloss Oyster exterior both with soft mocha accents and a graphics package that will turn heads.

Style and amenities with your camping and towing needs in mind!





MADRID / DRIFTWOOD

FLAGSTAFF

Super V

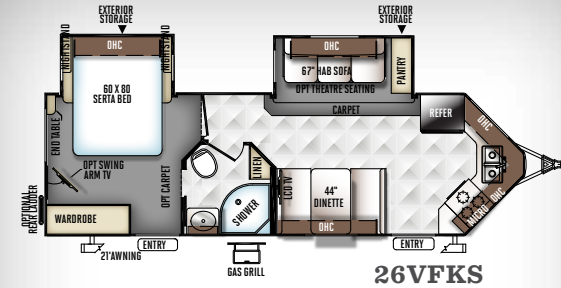
Smaller in size, big in comfort. The Super V models are a downsized “V” nose designed alternative to the Flagstaff V-Lite. These aerodynamic, six aluminum framed and vacuum bonded walls and roof trailers can be towed by a wide range of vehicles while offering “big time” features like bed rooms with walk around residential queen bed slides, fully equipped kitchens and generous storage space.



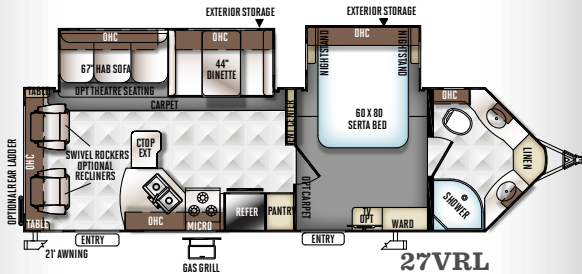
Optional Oyster Exterior



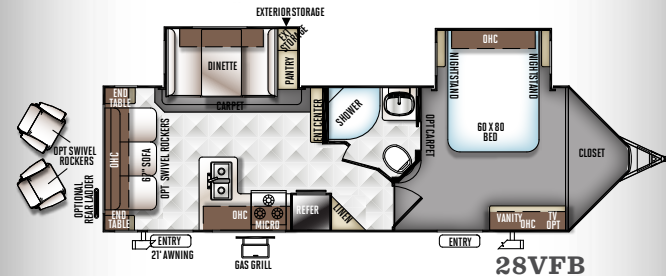
27VRL



26VFKS



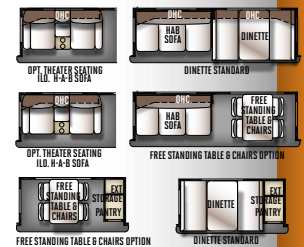
27VRL



28VFB

MODEL	26VFKS	27VRL	28VFB
Unloaded Vehicle Weight *	6392	6964	6537
Base Dry Hitch Weight	718	1010	898
Base Dry Axle Weight	5615	5895	5580
Cargo Capacity	1326	1446	1461
Length (Hitch To Bumper)	29' 9"	31' 10"	31' 9"
Width	96"	96"	96"
Height With A/C	133"	133"	133"
Interior Height	80"	80"	80"
Fresh Water Capacity	43 gal	43 gal	43 gal
Gray Water Capacity	74 gal	74 gal	37 gal
Black Water Capacity	37 gal	37 gal	37 gal

SUPER SLIDE OPTIONS



The Unloaded Vehicle Weight (UVW) listed represents the weight of one trailer with that model's standard equipment including the content of specified Option Packages. * See back cover for further specification definitions.



FLAGSTAFF SUPER LITE

Travel Trailers

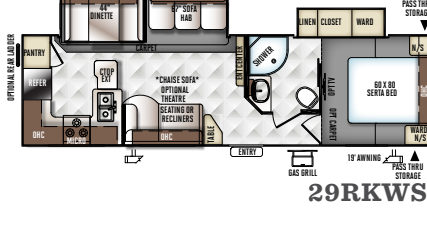
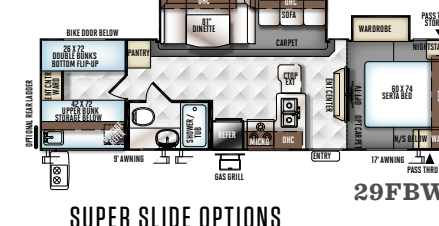
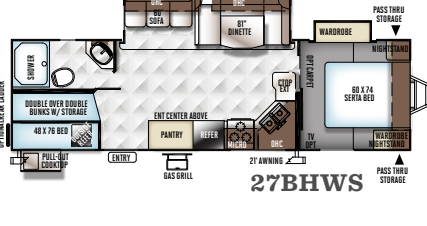
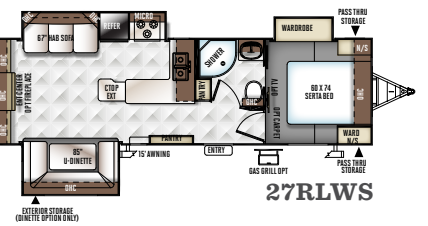
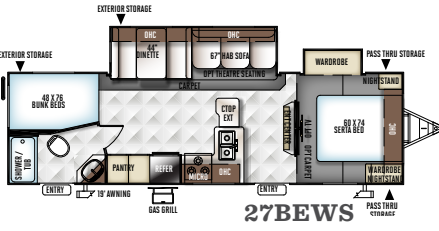
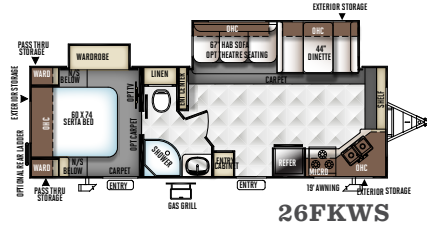
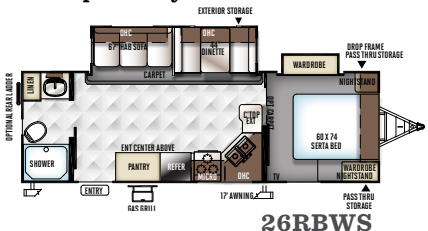
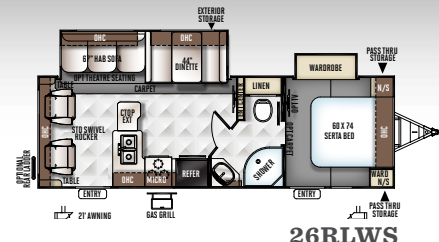
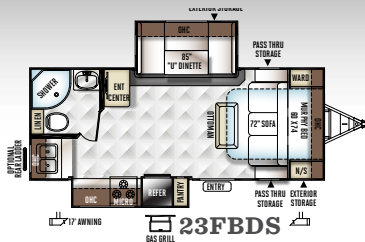
The floor plan you want in the size you need. We have custom designed our trailers with the best in style and amenities while keeping your towing needs in mind. Quality craftsmanship and attention to detail have been put into our Super Lite trailers, all with you in mind. The fully equipped kitchens with comfortable dinettes and distinctive, spacious interiors are just a couple notable features.



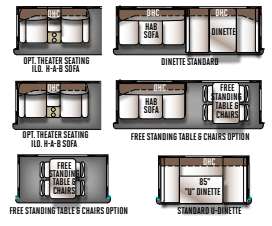
AURORA / MAPLE



Optional Oyster Exterior



SUPER SLIDE OPTIONS



MODEL	23FBDS	26RLWS	26RBWS	26FKWS	27BEWS	27RLWS	27BHWS	29FBWS	29KWS	29RKWS
Unloaded Vehicle Weight *	5536	6098	5996	6270	6437	6660	6509	6968	7183	6783
Base Dry Hitch Weight	624	650	788	642	870	716	732	834	808	754
Base Dry Axle Weight	4853	5389	5149	5569	5508	5885	5718	6075	6316	5970
Cargo Capacity	1088	1352	1692	1372	1433	1456	1623	1466	1425	1471
Length (Hitch To Bumper)	25' 1"	29' 11"	29' 8"	29' 11"	32' 5"	32' 5"	32' 7"	33' 9"	33' 11"	33' 9"
Width	96"	96"	96"	96"	96"	96"	96"	96"	96"	96"
Height With A/C	134"	134"	134"	134"	134"	134"	134"	134"	134"	134"
Interior Height	80"	80"	80"	80"	80"	80"	80"	80"	80"	80"
Fresh Water Capacity	43 gal	43 gal	43 gal	43 gal	43 gal	43 gal	43 gal	43 gal	43 gal	43 gal
Gray Water Capacity	37 gal	37 gal	74 gal	74 gal	37 gal	37 gal	74 gal	37 gal	37 gal	74 gal
Black Water Capacity	37 gal	37 gal	37 gal	37 gal	37 gal	37 gal	37 gal	37 gal	37 gal	37 gal

The Unloaded Vehicle Weight (UVW) listed represents the weight of one trailer with that model's standard equipment including the content of specified Option Packages.
 * See back cover for further specification definitions.

29RKWS



BRIGHTON / MAPLE



FLAGSTAFF SUPER LITE

Fifth Wheels

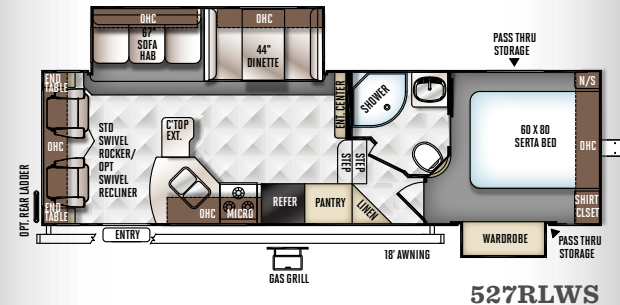
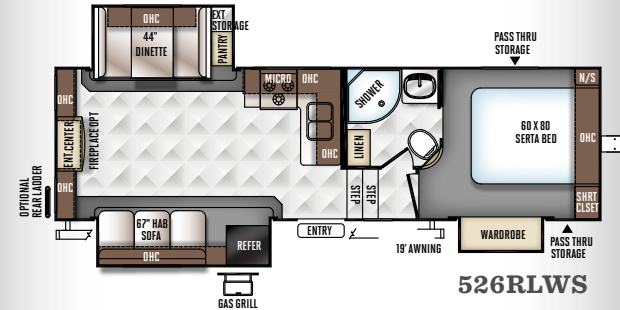
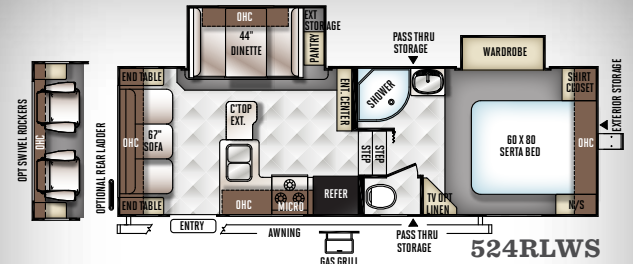
Lighten your load and relax in comfort. The Flagstaff Super Lite Fifth Wheel models provide excellent light weight alternatives for owners of 1/2 ton pick up trucks. Equipped with a standard Reese Revolution Hitch, you can tow with almost any size truck bed. Our Super Lite fifth wheels have been custom designed with the best in styling and amenities while keeping your towing needs in mind.



Optional Oyster Exterior

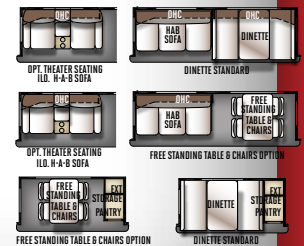


526RLWS



MODEL	524RLWS	526RLWS	527RLWS
Unloaded Vehicle Weight *	6741	7409	7706
Base Dry Hitch Weight	1134	1240	1176
Base Dry Axle Weight	5548	6110	6470
Cargo Capacity	1393	1431	1270
Length (Hitch To Bumper)	27'	29' 8"	30' 1"
Width	96"	96"	96"
Height With A/C	151"	151"	151"
Fresh Water Capacity	43 gal	43 gal	43 gal
Gray Water Capacity	37 gal	37 gal	74 gal
Black Water Capacity	37 gal	37 gal	37 gal

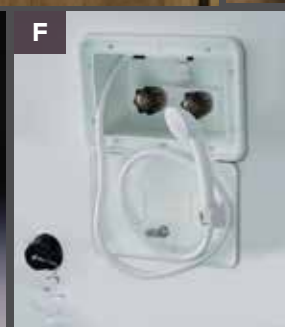
SUPER SLIDE OPTIONS



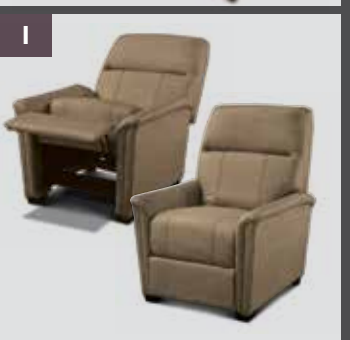
The Unloaded Vehicle Weight (UVW) listed represents the weight of one trailer with that model's standard equipment including the content of specified Option Packages. * See back cover for further specification definitions.

Popular Features

Features that make your trips feel like home. Flagstaff takes careful consideration to each feature added into each product produced. Every detail is considered ranging from extra sleeping room, storage, comfort and convenience. Take time to review the features listed below and match them with the competition's products. We're confident you'll discover Flagstaff is the superior choice.



- A** Power Awning with tilt adjustment and LED indirect lighting (Opt.)
- B** 32" LCD TV with a sound bar and the stereo system with *Bluetooth Technology. (Selected Models)
- C** Radius Glass Door Shower (N/A Models with Tub Bases)
- D** Solid surface kitchen counter tops with flush mount sinks
- E** Water Filtration System (Std.)
- F** Outside shower (Std.)
- G** Deluxe tri-fold sleeper sofa w/easy set up queen bed.(Standard on all models except 28VFB, 23FBDS, 524RLWS)



A Rear camera prep. (Std. all models) The Furrion observation camera system with digital wireless technology is sold separately.

B Control Center (Std.)

C Day night shades (Opt.)

D The Reese Revolution pin box provides:
1) Full 90 degree worry free turning,
2) Eliminates the need for a slider,
3) Greatly enhances maneuverability
www.reeseprod.com (Std.)

E Heated holding tanks with 12 Volt heat pads secured to the bottom No need to use the furnace to heat tanks when traveling. (Std.)

F Solar Panel Prep (Std. All Models) The Zamp 40 amp. portable solar panel shown is sold separately.

G 60" Heated theatre seating. Fabric matched to decor. (Opt. ILO Sofa 29FBWS)

H Swivel rocker, fabric to match" (STD. 26RLWS, 527RLWS, 2718VRLS) (Opt.28VFB, 524RLWS)

I Standard swivel recliner where applicable. Fabric to match decor. Available ILO all units with swivel swivel rockers.

J 67" Heated theatre seating per floorplan where available. Fabric matched to decor where available. (Available ILO Standard Recliner. Optional on all models ILO Sofa except 28VFB, 23FBDS, 26RLWS, 27BHWS, 29FBWS, 524RLWS)



AURORA



BRIGHTON



MADRID



DRIFTWOOD DÉCOR
STANDARD



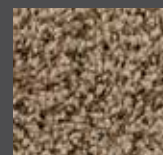
MAPLE DÉCOR
OPTION



STANDARD
FLOOR COVERING



OPTIONAL
FLOOR COVERING



CARPET

Quality Construction

The details are what make all the difference. Flagstaff takes pride in constructing the very best products possible in each price point. From our entry level units to our top of the line products, no short cuts are taken to achieve excellence. From the all-steel I-beams to the residential interior amenities to the vacuum-bonded exteriors, Flagstaff products are quality built from the ground-up.



- 1 Glued and screwed wood cabinetry
- 2 Aluminum dinette frames for added strength and weight savings
- 3 Nitrogen filled tires for less air pressure fluctuation and a safer ride
- 4 Extra large dinette storage drawers and full extension metal drawer guides in the kitchen
- 5 Dexter Torflex Axles:
 - Independent wheel suspension and self-damping action
 - Rubber cushioning eliminates metal-to-metal contact.
 - Forged torsion arm for maximum strength

Models are also equipped with E-Z Lube® System and Nev-R-Adjust® Brakes.

- 6 Enclosed underbelly protects trailer components as well as increasing aerodynamics
- 7 Aluminum Frame Construction with high gloss fiberglass exterior and deluxe graphics



ROOF CONSTRUCTION



Vacuum-bonded radius roof with vaulted ceiling providing superior insulation and more interior height.



4" thick roof with built in insulated A/C ducts



Built strong to enable you to conveniently perform periodic roof maintenance.

WALL STRENGTH



Structurally engineered materials makes our vacuum-bonded walls some of the strongest in the industry.

VACUUM-BONDED LAMINATED CONSTRUCTION



Flagstaff is one of only a few manufacturers with six sided aluminum framing. Vacuum bonded walls and roof to ensure a well-insulated, light weight, strong structural trailer.

Standards & Options

MODELS	V	TT	FW	MODELS	V	TT	FW	MODELS	V	TT	FW
STANDARD PACKAGES INCLUDE:	Pkg. F	Pkg. F	Pkg. E	Tinted Bonded Frameless Windows	S	S	S	Digital AM/FM/CD/DVD w/ Remote	S	S	S
High Gloss TPO Front Cap	S	S	--	Automotive Windshield (Pkg. F & E Where Applicable)	S*	S*	--	MP3 Player Hook-Up	S	S	S
Reese Revolution Pin Box Hitch (Pkg. E Only)	--	--	S	Rear Observation Camera Prep w/ Molded Mounting Plate	S	S	S	Designer Valances w/ Lambrequin Arms	S	S	S
Aluminum Bed and Dinette Base	S	S	S	Solar Panel Prep	S	S	S	Night Shades	S	S	S
6 Sided Aluminum Cage Construction	S	S	S	INTERIOR FEATURES				Day/Night Shades	O	O	O
Vacuum Laminated 1 Piece Roof and Walls	S	S	S	Driftwood Interior	S	S	S	Swivel Rocker Chair (Std. 26RLWS, 27VRL, 527RLWS Only, Opt. 28VFB, 524RLWS ILO Rear Sofa)	S*/O*	S*	S*/O*
Enclosed Underbelly	S	S	S	Maple (w/ Solid Maple Glaze Finished Cabinet Doors) Interior	O	O	O	Swivel Rocker Recliners ILO Swivel Rockers (Opt. 27VRL, 527RLWS Only)	O*	--	O*
4 Frame Mounted Stabilizer Jacks (Pkg. F & E)	S	S	--	Decorative Slide Out Fascia	S	S	S	Swivel Rocker Recliners ILO Chaise Lounge (Opt. 29RKWS Only)	--	O*	--
Power Landing Legs and Stabilizer Jacks (Pkg. E Only)	--	--	S	Solid Wood and Raised Panel Doors and Drawers	S	S	S	Heated Theater Seating w/ USB Ports (Std. 29KSWS, Opt. 26VFKS, 26RBWS, 27VRL, 26RLWS, 26FKWS, 27BEWS, 29FBWS, 527RLWS)	O*	S*/O*	O*
Power Awning w/ Adjustable Rain Dump and LED Light Strip	S	S	S	Screwed and Glued Wood Cabinetry	S	S	S	Heated Theater Seating w/ USB Ports ILO Chaise Lounge (Opt. 29RKWS Only)	--	O*	--
Torsion Axle, Rubber-Ryde Suspension	S	S	S	Residential Full Extension Metal Drawer Guides	S	S	S	Deluxe Tri-Fold Sleeper Sofa (Std. 26VFKS, 27VRL, 26RLWS, 26RBWS, 26FKWS, 27BEWS, 27BHWS, 27RLWS, 29RKWS, 29FBWS, 29KSWS, 526RLWS, 527RLWS)	S*	S*	S*
Nitro Filled Radial Tires	S	S	S	Engineered Mold and Mildew Resistant Floor Covering	S	S	S	44" Family Dinette (N/A 23FBDS, 27BHWS 27RLWS, 29FBWS)	S*	S*	S*
Polished Alloy Wheels	S	S	S	Bedroom Carpet (N/A 23FBDS)	O	O	S	48" X 84" Spacious King-U-Style Dinette (Std. 23FBDS, 27BHWS, 27RLWS, 29FBWS)	S*	S*	S*
LED TV w/ Multi-directional Antenna	S	S	S	Floor Ducted Furnace	S	S	S	Free Standing High Pressure Laminated Table with Swing Level Legs	S	S	S
Multi Zone Stereo w/ DVD/CD/AM/FM and Bluetooth Control	S	S	S	15,000 BTU A/C	O	O	O	Free Standing Table and Chairs (N/A 26VFKS)	O*	O*	O*
Slam Latch Baggage Doors	S	S	S	2nd Roof A/C w/ Chill Chaser Heat Strip and 50 Amp Service (N/A 23FBDS, 26RLWS, 26FKWS, 26RBWS) and Digital Dual Thermostat Control	O	O*	O	Stainless Steel Appliances	O	O	O
Magnetic Door Holds	S	S	S	50 Amp Service w/ 2nd A/C Prep (N/A 23FBDS, 26RLWS, 26FKWS, 26RBWS)	O	O*	O	Raised Refrigerator Panels	O	O	O
Outside Speakers	S	S	S	Fireplace (27RLWS, 29KSWS, 526RLWS Only)	--	O	O	Residential One-Piece Sink Cover	S	S	S
Maxxair® Ventilation Fan and Vent Cover	S	S	S	Carbon Monoxide Detector	S	S	S	Cutting Board	S	S	S
13,500 BTU Ducted Roof A/C	S	S	S	12 Volt Power Plug Hook-up	S	S	S	Counter Top Extension (Std. 29KSWS, 27VRL, 26RLWS, 26RBWS, 27BHWS, 27BEWS, 27RLWS, 29FBWS, 524RLWS, 527RLWS)	S	S	S
Under Mount Double Bowl Kitchen Sink w/ Residential Style Faucet	S	S	S	CSA	O	O	O	Water-Pur Filtration System	S	S	S
Solid Surface Kitchen Countertops	S	S	S	Monitor Panel Switch Station	S	S	S				
Recessed 3 Burner Cooktop and Large Oven w/ Flush Mount Cover	S	S	S	55 Amp Converter With Charger	S	S	S				
Roller Bearing Drawer Guides	S	S	S	Battery Disconnect Switch	S	S	S				
Microwave Oven	S	S	S	Recessed Ceiling LED 12 Volt Interior Lighting	S	S	S				
Double Door Auto Gas/Elec. Large Refrigerator	S	S	S	Bedroom Mounted 24" LCD TV (Opt. All SL Models Except 23FBDS)	O*	O*	O*				
Serta Innerspring Mattress	S	S	S	32" LCD TV w/ Premium Soundbar	S	S	S				
Quick Recovery Auto Ignition Gas/Electric Water Heater	S	S	S								
Black Tank Flush	S	S	S								
Spare Tire Carrier and Cover	S	S	S								
Outside Grill	S	S	S								

STANDARDS & OPTIONS ARE SUBJECT TO CHANGE.

**MODELS**

	V	TT	FW
Tub Surround	S	S	S
Radius Glass Door Shower	S*	S*	S*
Large Shower w/ Sliding Glass Door (Std. 26RBWS, 27BHWS)	--	S*	--
Bathroom Skylight	S	S	S
Water Heater By-Pass Kit	S	S	S
Foot Flush Toilets	S	S	S
Extra Maxxair® Ventilation Fan and Vent Cover	O	O	O
Murphy Bed w/ Under Sofa Storage System and Outside Access for Unmatched Floor Plan Flexibility (Std. 23FBDS)	--	S*	--

EXTERIOR FEATURES

Fully Aluminum Frame (Floor, Sidewall, & Roof)	S	S	S
Insulation Factors R-7 Side Wall, R-12 Floor and R-14 Ceiling	S	S	S
Radius Roofs w/ Interior Vaulted Ceilings	S	S	S
Vinyl / Rubber Composite Roofing Membrane	S	S	S
T V Antenna w/ Cable & Satellite Hook-Up	S	S	S
Rear Observation Camera Prep w/ Molded Mounting Plate	S	S	S
Laminated Oyster Colored Fiberglass Sidewalls	O	O	O
Laminated Fiberglass Sidewalls	S	S	S
Distinctive Black Exterior Trim	S	S	S
Electric Slide-Out (All Slide Out Models)	S	S	S
Decorative Frame Skirting	S	S	S
Rear Ladder	O	O	O
Bike Rack Ladder Attachment	O	O	O
Awning Slide Topper	O	O	O
30" Primary Entrance/Screen Door	S	S	S
Friction Hinge Entrance Door	S	S	S
Large Assist Grab Handles	S	S	S
Lighted Entry Step and Scare Light	S	S	S
Radius Corner Windows and Doors	S	S	S
Thermopane Windows	O	O	O

MODELS

	V	TT	FW
Large Dinette Picture Window	S	S	S
Outside Shower	S	S	S
1/2 Sliding Storage Tray (N/A 23FBDS, 26RLWS)	--	O*	--
Outside Antifreeze Stations	S	S	S
Front Outside "Trunk" Storage Separated From Heated			
Pass Thru Storage Compartments	--	--	S
Two-30 Lb Gas Bottles	S	S	S
Enclosed Gas Bottles w/ Storage Door Access	S	--	S
Molded Bottle Cover	--	S	--
Surface Coated Steel I-Beam Frame	S	S	S
Reese Revolution Hitch	--	--	S
Power Front Landing Jacks	--	--	S
Power Tongue Jack	O	O	--
Power Stabilizer Jacks (Fifth Wheels: Rear Jacks only)	O	O	O
Easy Lube Axles and Nev-R Adjust Brakes	S	S	S
Triple Entry Step	S	S	S
Electronically Controlled Heated Holding Tanks	O	O	O

V = SUPER V, TT = SUPER LITE TRAVEL TRAILER, FW = SUPER LITE FIFTH WHEEL

S = STANDARD, O = OPTIONAL, -- NOT AVAILABLE, * = SELECTED MODELS



PRE-DELIVERY INSPECTION FACILITY

20,000 square feet of quality assurance. The bare essentials for a premium product. This state-of-the-art facility gives immediate daily feedback to production for quality assurance in every unit built.



Forest River, Inc. encourages our customers to purchase their Forest River products from a local dealership whenever possible for the following reasons:

- 1) Forest River, Inc. dealers are independently owned and operated businesses so priority service and scheduling is at their discretion and is often provided to customers that purchased their unit at that dealership.
- 2) Purchasing locally allows customers to establish meaningful relationships with a dealer, enhancing the RV experience through assistance with product questions, user tips or RV regulations for your state or country, and much more!
- 3) Canadian customers must meet requirements to bring an RV purchased out of the country to their home. These requirements may involve additional inspections and certifications, taxes and fees. Your local Canadian Dealer is a professional at meeting these requirements.
- 4) Scheduling timely warranty repairs and adjustments through a local dealership provides far greater flexibility and convenience to you, the customer!

It is the goal of Forest River, Inc. that all of our RV owners fully enjoy the RV experience and that customer satisfaction meets or exceeds their expectations!

24/7 EMERGENCY ROADSIDE ASSISTANCE

For a worry-free ownership experience

Forest River includes one

year of Coach-Net RV Technical & Roadside Assistance with each RV purchase. Whether new to the RV lifestyle or an experienced RV enthusiast, Forest River owners have 24/7 access to technical, operational and emergency road service coverage throughout the US & Canada.

Coach-Net's fast, dependable service is just a phone call away.

Coach-Net[®]
RV Technical & Roadside Assistance

LOOK FOR OUR OTHER POPULAR LINES OF FLAGSTAFF CAMPING TRAILERS.



Flagstaff V-Lite, Classic Super Lite Travel Trailers & Fifth Wheels



Flagstaff Micro Lite & Shamrock



Flagstaff MAC, SE, Classic, High Wall & Hard Side Camping Trailers.

Specification Definitions

GVWR (Gross Vehicle Weight Rating) - is the maximum permissible weight of the unit when fully loaded. It includes all weights, inclusive of all fluids, cargo, optional equipment and accessories. For safety and product performance do NOT exceed the GVWR.

GAWR (Gross Axle Weight Rating) - is the maximum permissible weight, including cargo, fluids, optional equipment and accessories that can be safely supported by a combination of all axles.

UVW (Unloaded Vehicle Weight) - is the typical weight of the unit as manufactured at the factory. It includes all weight at the unit's axle(s) and tongue or pin and LP Gas. The UVW does not include cargo, fresh potable water, additional optional equipment or dealer installed accessories.

*Estimated average based on standard build optional equipment.

CCC (Cargo Carrying Capacity)** - is the amount of weight available for fresh potable water, cargo, additional optional equipment and accessories. CCC is equal to GVWR minus UVW. Available CCC should accommodate fresh potable water (8.3 lbs per gallon). Before filling the fresh water tank, empty the black and gray tanks to provide for more cargo capacity.

** Estimated average based on standard build optional equipment

Each Forest River RV is weighed at the manufacturing facility prior to shipping. A label identifying the unloaded vehicle weight of the actual unit and the cargo carrying capacity is applied to every Forest River RV prior to leaving our facilities.

The load capacity of your unit is designated by weight, not by volume, so you cannot necessarily use all available space when loading your unit.

FLAGSTAFF

Warranty

For details on Flagstaff's complete warranty program, see your Flagstaff dealer.

When it comes to backing products with the same quality and commitment it does when it begins the manufacturing process, the only name you have to remember when you're looking for a recreational vehicle is Flagstaff. Flagstaff offers the following additional limited warranties to the original purchasers. Consult written warranty for details.

1. Twelve-year vinyl roof warranty,
2. Two-year fiberglass warranty,
3. Ten-year Torflex® axle warranty,
4. One-year bumper to bumper warranty,
5. Available second-year warranty



Learn More

Scan this barcode using a QR Reader on your smart phone to learn more about Forest River.



A Berkshire Hathaway company.

201 WEST ELM MILLERSBURG, IN 46543 WWW.FORESTRIVERINC.COM/FLAGSTAFF 574.642.2640

YOUR FLAGSTAFF DEALER

All information contained in this brochure is believed to be accurate at the time of publication. However, during the model year, it may be necessary to make revisions and Forest River, Inc., reserves the right to make all such changes without notice, including prices, colors, materials, equipment and specifications as well as the addition of new models and the discontinuance of models shown in this brochure. Therefore, please consult with your Forest River dealer and confirm the existence of any materials, design or specifications that are material to your purchase decision. Litho. U.S.A. FOR 1386 W-2016.10.11