

Flagstaff

WE'RE  YOUR
LIGHT WEIGHT
SPECIALISTS
EST. 1974

V-LITES, CLASSIC SUPER LITE TRAVEL TRAILERS & FIFTH WHEELS

Flagstaff

V-LITES, CLASSIC SUPER LITE TRAVEL
TRAILERS & FIFTH WHEELS





We're building a legacy.

Flagstaff has emerged as an industry leader in the manufacturing of light weight travel trailers, fifth wheels and camping trailers. For over 25 years, Flagstaff has been committed to being the market's "light weight" specialist. With a focus on providing travel trailers to meet the weight requirements of the vehicles our customers own, we have built a tradition of providing superior value and service while remaining in tune with our customer's needs. As a result, Flagstaff has become one of the most versatile product lines in the light weight trailer market, proudly showcasing more innovative floor plans, appealing features and refined interior appointments than any others in its class.





Today, Flagstaff remains committed to insuring that our customers enjoy their camping experiences. Through the utilization of our experienced work force, “state of the art” lamination facility, modern production plants and detailed assembly processes our aim is to continue to provide our customers with the best built product possible at an unmatched value.



The traditional Flagstaff V-lite. Classic Super Lite travel trailers and fifth wheels continue to provide unsurpassed value and comfort. The spacious interiors offer numerous windows, 83" vaulted ceilings with directional vented air conditioning and extensive interior LED lighting throughout. Rich with appointments like the flush mount stainless steel kitchen sink, a stove top with glass cover, 22" oven and distinctive Driftwood or Maple cabinets with solid wood doors and drawer fronts throughout add to the tremendous value provided.



Featuring an aluminum framed with vacuum bonded construction, high gloss fiberglass exterior and deluxe graphics, the Classic Super Lite and V-lite are among the best constructed, most well insulated trailers available on the market today.



Flagstaff Fifth Wheel models are loaded with features like the Reese Revolution hitch, power stabilizer jacks, slam latches on most storage doors and much more.





8528CKWS



AURORA / MAPLE

30WRLIKS



Optional Champagne Exterior

The tradition continues.

To continue this tradition, Flagstaff offers a group of appealing features to enhance the appearance of the Classic Super Lite & V-Lite series. Flagstaff now offers more standard features like raised panel cabinet doors, *Corian kitchen counter tops and under mount stainless steel sinks, plus residential soft close drawer guides. Need head room? We raised the bar. All travel trailer and V-Lites are now three inches taller.

Other exciting "Standards" include entertainment centers and control panels where you can down load an app on your smart phone and control the lighting,

slide outs, water pump, check your tank levels or turn on your water pump. Another app allows you to control the entertainment center and sound system, no use in trying to find that remote.

This year high gloss white fiberglass is standard with the Champagne exterior as an option, both will have "Standards" like bonded frameless windows, polished alloy wheels, a colored keyed roof and a soft mocha front cap, plus check out those graphics and the automotive front windshields on most of our Travel Trailers... There is style and value in all we do!



FLAGSTAFF

V-Lite

Proving yet again innovation can make family camping luxurious. Thanks to its "V" nose design, every possible space is used for interior room and storage. The aerodynamic, aluminum framed, vacuumed bonded exterior can be towed by a wide variety of vehicles on the market. A variety of standards and options gives extensive customization potential for each individual consumer.



BRIGHTON / MAPLE

30WFKSS



BRIGHTON / MAPLE

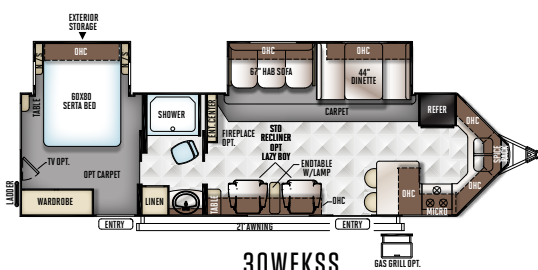


Standard White Exterior

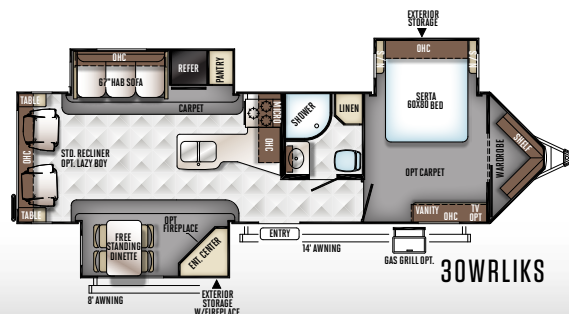
MODEL	30WRLS	30WTBSK	30WFKSS	30WIKSS	30WRLIKS
UNLOADED VEHICLE WEIGHT *	7674	7671	7482	8093	7772
BASE DRY HITCH WEIGHT	806	942	897	887	1067
BASE DRY AXLE WEIGHT	6809	6670	6526	7147	6646
CARGO CAPACITY	1132	1271	1415	1294	1495
LENGTH (HITCH TO BUMPER)	35' 1"	34' 7"	34' 7"	35' 1"	35'
WIDTH	96"	96"	96"	96"	96"
HEIGHT WITH A/C	136"	136"	136"	136"	136"
INTERIOR HEIGHT	83"	83"	83"	83"	83"
FRESH WATER CAPACITY	45 gal	45 gal	45 gal	45 gal	45 gal
GRAY WATER CAPACITY	45 gal	90 gal	75 gal	90 gal	45 gal
BLACK WATER CAPACITY	45 gal	45 gal	45 gal	45 gal	45 gal

The Unloaded Vehicle Weight (UVW) listed represents the weight of one trailer with that model's standard equipment including the content of specified Option Packages. * See back cover for further specification definitions.

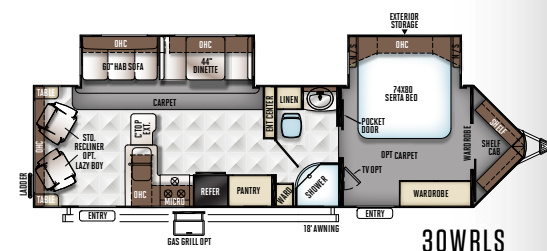
30WFKSS



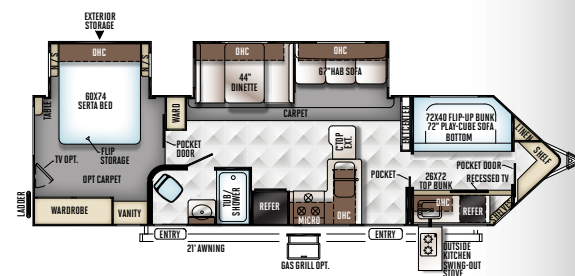
30WFKSS



30WRLIKS



30WRLS

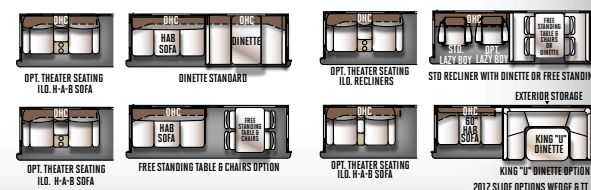


30WTBSK



30WIKSS

SUPER SLIDE OPTIONS





FLAGSTAFF CLASSIC SUPER LITE

Travel Trailers

The floor plan you want in the size you need. We have custom designed our trailers with the best in style and amenities while keeping your towing needs in mind. Quality craftsmanship and attention to detail have been put into our Classic Super Lite trailers, all with you in mind. The fully equipped kitchens with comfortable dinettes and distinctive, spacious interiors are just a couple notable features.

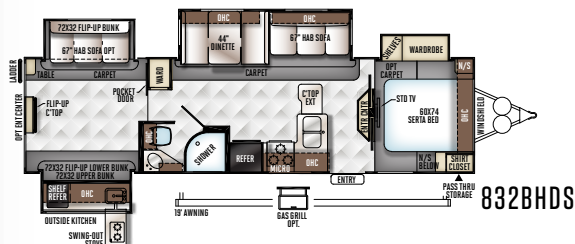


MADRID / DRIFTWOOD

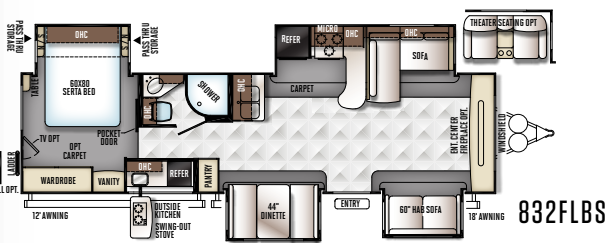
831RESS

831CLBSS

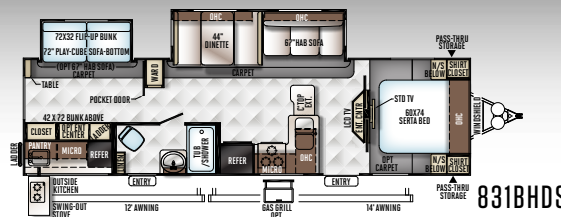
831CLBSS



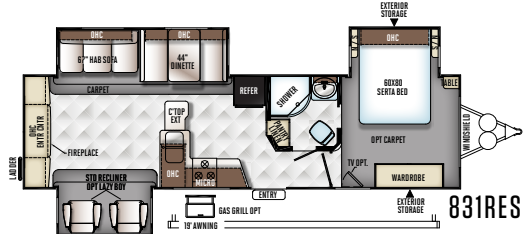
832BHDS



832FLBS



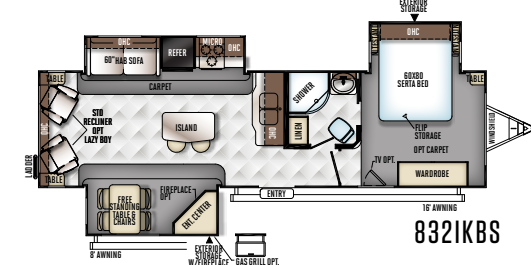
831BHDS



831RESS



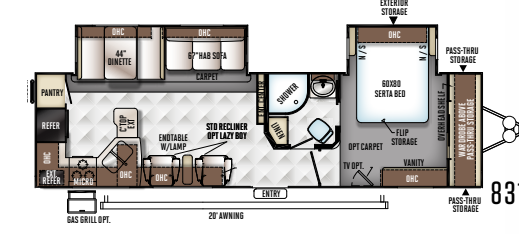
832BHIKWS



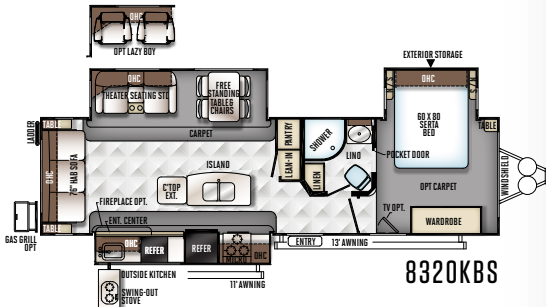
832KBS



831BHWSS



831RKBSS



8320KBS

SUPER SLIDE OPTIONS



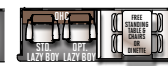
OPT THEATER SEATING



DINETTE STANDARD



OPT. THEATER SEATING
U.S. RESIDERS



STD RECLINER WITH DINETTE OR FREE STANDING



OPT. THEATER SEATING
ILO. H-A-B SOFA



FREE STANDING TABLE & CHAIRS OPTION



OPT. THEATER SEATING
ILO. H-A-B SOFA



KING "U" DINETTE OPTI
2017 SLIDE OPTIONS WEDGE &

* See back cover for further specification definitions.



FLAGSTAFF CLASSIC SUPER LITE

Fifth Wheels

Lighten your load and relax in comfort. The Flagstaff Classic Super Lite Fifth Wheel models provide excellent light weight alternatives for owners of 1/2 ton pick up trucks. Equipped with a standard Reese Revolution Hitch, you can tow with almost any size truck bed. Our Classic Super Lite fifth wheels have been custom designed with the best in styling and amenities while keeping your towing needs in mind.



AURORA / MAPLE

8528CKWSA



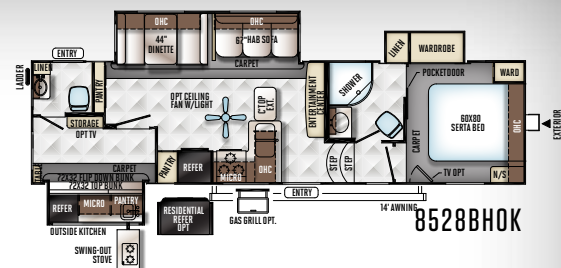
8528CKWSA Entertainment Center



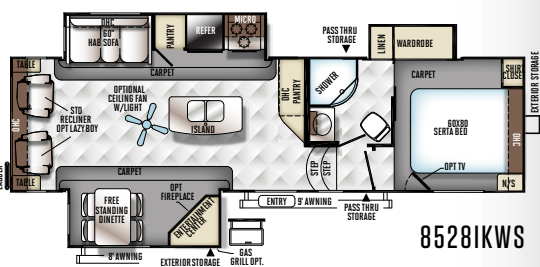
Standard White Exterior



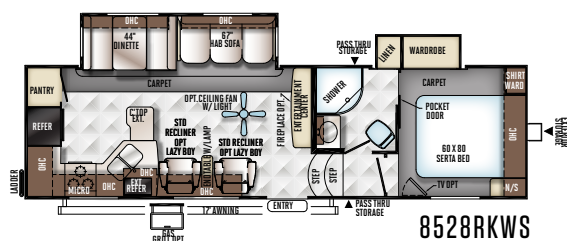
8528CKWSA



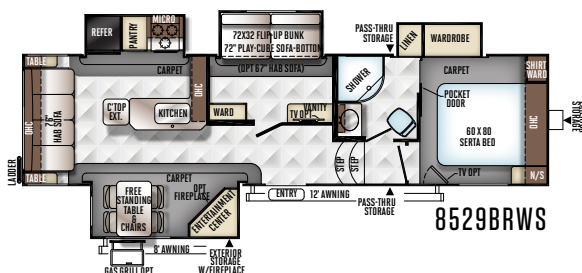
8528BHOK



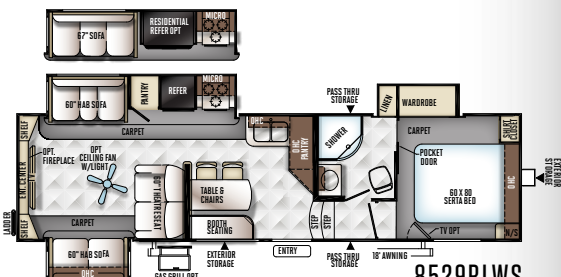
8528IKWS



8528RKWS



8529BRWS



8529RLWS

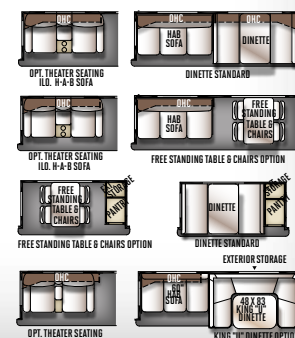
MODEL	8528BHOK	8528CKWSA	8528IKWS	8528RKWS	8529BRWS	8529RLWS
UNLOADED VEHICLE WEIGHT *	9183	8539	8866	8707	9133	9156
BASE DRY HITCH WEIGHT	1288	1530	1420	1336	1470	1625
BASE DRY AXLE WEIGHT	7836	6950	7387	7312	7604	7472
CARGO CAPACITY	1505	1441	1554	1279	1537	1619
LENGTH (HITCH TO BUMPER)	33'-6"	31'-11"	31'-11"	31'-11"	33'-6"	33'-6"
WIDTH	96"	96"	96"	96"	96"	96"
HEIGHT WITH A/C	156"	156"	156"	156"	156"	156"
FRESH WATER CAPACITY	45 gal	45 gal	45 gal	45 gal	45 gal	45 gal
GRAY WATER CAPACITY	108 gal	75 gal	90 gal	90 gal	90 gal	90 gal
BLACK WATER CAPACITY	90 gal	45 gal	45 gal	45 gal	45 gal	45 gal

The Unloaded Vehicle Weight (UVW) listed represents the weight of one trailer with that model's standard equipment including the content of specified Option Packages. * See back cover for further specification definitions.

With the Reese Revolution standard on all Flagstaff Fifth Wheel models, you can tow with almost any size truck bed and have more free space to carry your camping gear.



SUPER SLIDE OPTIONS



FLAGSTAFF CLASSIC SUPER LITE

Bed Slide Fifth Wheels

Sometimes, a real good thing gets even better. Flagstaff has developed two new models of Fifth Wheel trailers to broaden the appeal of the popular Classic Super Lite Series. These models include the addition of a 12 cubic foot side by side refrigerator, a spacious bedroom with a "walk around" residential Queen Bed slide, full width Closets and a Dresser full of drawers. The added space these models provide shows how to improve a good trailer without having to jump way up in truck size. All Flagstaff Fifth Wheels come standard with the Reese revolution Hitch allowing you to tow with almost any size truck bed.



MADRID / MAPLE

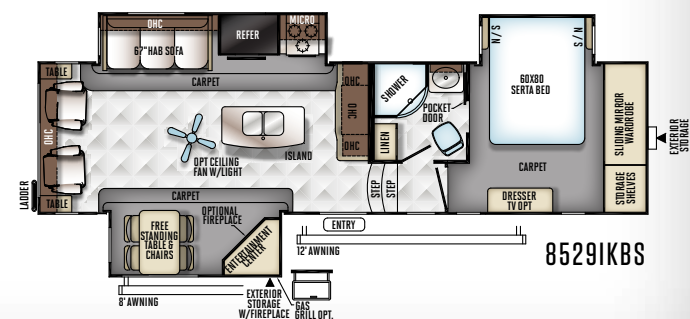
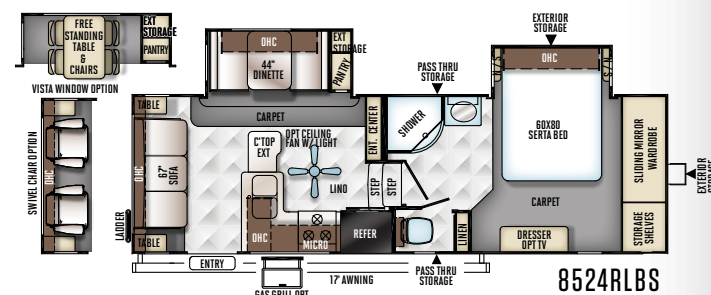
8529IKBS



Optional Champagne Exterior

8529IKBS Bedroom

Spacious Bedroom with Residential Queen Bed Slide and Full Width Closet.

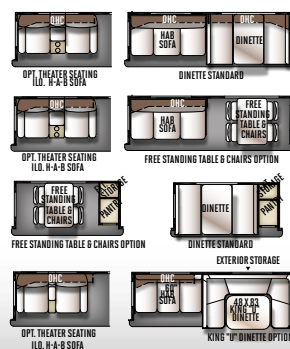


MODEL	8524RLBS	8529IKBS
UNLOADED VEHICLE WEIGHT *	7674	9485
BASE DRY HITCH WEIGHT	1292	1527
BASE DRY AXLE WEIGHT	6323	7899
CARGO CAPACITY	1518	1642
LENGTH (HITCH TO BUMPER)	28' 2"	33' 10"
WIDTH	96"	96"
HEIGHT WITH A/C	155"	156"
FRESH WATER CAPACITY	45 gal	45 gal
GRAY WATER CAPACITY	45 gal	90 gal
BLACK WATER CAPACITY	45 gal	45 gal

The Unloaded Vehicle Weight (UVW) listed represents the weight of one trailer with that model's standard equipment including the content of specified Option Packages.

* See back cover for further specification definitions.

SUPER SLIDE OPTIONS



FLAGSTAFF CLASSIC SUPER LITE SERIES

Popular Features

Features that make your trips feel like home. Flagstaff takes careful consideration to each feature added into each product produced. Every detail is considered ranging from extra sleeping room, storage, comfort and convenience. Take time to review the features listed below and match them with the competition's products. We're confident you'll discover Flagstaff is the superior choice.



A Power Awning with tilt adjustment and LED indirect lighting

B 55", 42" and 32" LCD TV (where applicable) w/ 5.1 Dolby Speaker System with "Bluetooth" Technology (Selected Models) Electric Fireplace/Heater (Std./Opt. Select Models)

C Radius Glass Door Shower (N/A Models with Tub Bases)

D Free-standing chair with seat storage and table with extension (Opt./Std. select models)

E Deluxe Tri-Fold Sleeper Sofa on select models

F Deluxe Tri-Fold Sleeper Sofa w/ Comfortable, easy set-up Queen bed (Std. models w/ 67" HAB Sofa) (Full Size Bed, Std. models with King-U-Dinette option. Colors will vary per selection.)



A Rear camera prep. (Std. all models) The Furion observation camera system with digital wireless technology is sold separately.

B State-of-the-art control panel with available App for download on the App store and Google Play

C Day night shades (Std.)

D The Reese Revolution pin box provides:
1) Full 90 degree worry free turning,
2) Eliminates the need for a slider,
3) Greatly enhances maneuverability
www.reeseprod.com (Std.)

E Heated holding tanks with 12 Volt heat pads secured to the bottom No need to use the furnace to heat tanks when traveling. (Std.)

F Solar panel prep (Std. all models) The Zamp 40 amp. portable solar panel shown is sold separately.

G 60" Heated theatre seating. Fabric matched to decor.

H Standard push back recliner. Fabric matched to decor. (Most models)

I Lazy Boy swivel recliner. Fabric matched to decor. (Opt. Available ILO all units with standard push back recliner)

J 67" Heated theatre seating per plan where available. Fabric matched to decor. (Std. 8529RLBS) (Available ILO standard recliner (Opt. w/ 30WIKSS, 83IRESS, 8528CKWSA Only)(ILO 67" HAB sofa only all models except 30WRLIKS, 832IKBS, 8265WS, 8288WS, 8529RLBS, 8529IKBS)



AURORA



BRIGHTON



MADRID



DRIFTWOOD DÉCOR
STANDARD



MAPLE DÉCOR
OPTION



STANDARD
FLOOR COVERING



OPTIONAL
FLOOR COVERING



CARPET

FLAGSTAFF CLASSIC SUPER LITE SERIES

Quality Construction

The details are what make all the difference. Flagstaff takes pride in constructing the very best products possible in each price point. From our entry level units to our top of the line products, no short cuts are taken to achieve excellence. From the all-steel I-beams to the residential interior amenities to the vacuum-bonded exteriors, Flagstaff products are quality built from the ground-up.



- 1 Glued and screwed wood cabinetry
- 2 Aluminum dinette frames for added strength and weight savings
- 3 Nitrogen filled tires for less air pressure fluctuation and a safer ride
- 4 Extra large dinette storage drawers and full extension metal drawer guides in the kitchen
- 5 Dexter Torflex Axles:
 - Independent wheel suspension and self-damping action
 - Rubber cushioning eliminates metal-to-metal contact.
 - Forged torsion arm for maximum strength
- 6 Models are also equipped with E-Z Lube® System and Nev-R-Adjust® Brakes.
- 6 Enclosed underbelly protects trailer components as well as increasing aerodynamics
- 7 Aluminum Frame Construction with high gloss fiberglass exterior and deluxe graphics

ROOF CONSTRUCTION



Vacuum-bonded radius roof with vaulted ceiling providing superior insulation and more interior height.



4" thick roof with built in insulated A/C ducts



Built strong to enable you to conveniently perform periodic roof maintenance.

WALL STRENGTH



Structurally engineered materials makes our vacuum-bonded walls some of the strongest in the industry.

VACUUM-BONDED LAMINATED CONSTRUCTION



Flagstaff is one of only a few manufacturers with six sided aluminum framing. Vacuum bonded walls and roof to ensure a well-insulated, light weight, strong structural trailer.

Standards & Options

MODELS	V	TT	FW	MODELS	V	TT	FW	MODELS	V	TT	FW
STANDARD PACKAGES	PKG. C	PKG. B	PKG. A								
Painted Fiberglass Front Cap w/ Automotive Windshield (Pkg. B Only) (Windshield N/A 831RKBS)	--	S*	--	Torsion Axle, Rubber-Ryde Suspension	S	S	S	12 Volt Power Plug With USB Charging Port	S	S	S
Fiberglass Exterior w/ High Gloss Finish	S	S	S	Polished Alloy Wheels	S	S	S	CSA	0	0	0
Aluminum Bed and Dinette Base	S	S	S	Spare Tire Carrier & Cover	S	S	S	Tablet Control Panel	0	0	0
6 Sided Aluminum Cage Construction	S	S	S	Nitro Filled Tires	S	S	S	Battery Disconnect Switch	S	S	S
Vacuum Laminated 1 Piece Roof and Walls	S	S	S	Slam Latch Baggage Doors and Magnetic Door Holds	S	S	S	55 Amp Converter With Charger	S	S	S
Tinted Bonded Frameless Windows	S	S	S	Rear Observation Camera Prep w/ Molded Mounting Plate	S	S	S	LED 12 Volt Interior Lighting	S	S	S
Power Awning w/ Adjustable Rain Dump and LED Light Strip	S	S	S	Solar Panel Prep	S	S	S	Flush Mount Ceiling LED 12 Volt Interior Lighting w/ Multiple Switches	S	S	S
Enclosed Underbelly	S	S	S	Rear Ladder	S	S	S	Interior Floor Light by Entrance Door	S	S	S
Reese Revolution Pin Box Hitch (Pkg. A Only)	--	--	S	Black Tank Flush	S	S	S	Directional Reading LED Lights on Most Sofa Slides	S	S	S
Power Landing Legs & Stabilizer Jacks (Pkg. A Only)	S	S	S					Residential Dome Style LED Lights Over Sofa and Table	S	S	S
4 Frame Mounted Stabilizer Jacks (Pkg. B and C Only)	S	S	S	INTERIOR FEATURES				Upgraded Recessed LED Lighting Around Medicine Cabinet	S	S	S
13,500 BTU Ducted A/C	S	S	S	Driftwood Interior	S	S	S	Digital AM/FM/DVD w/ "Bluetooth" Technology	S	S	S
Upgraded 22" Gas Oven (18" Oven 8524RLBS)	S	S	S	Maple (w/ Solid Maple Glaze Finished Cabinet Doors) Interior	0	0	0	2nd Digital AM/FM/DVD (30WTBSK, 831BHWSS, 831BHDS, Only)	S*	S*	S*
Microwave Oven	S	S	S	Decorative Slide Out Fascia	S	S	S	MP3 Player Hook-Up	S	S	S
Recessed Cooktop and Oven w/ Flush Mount Cover	S	S	S	Decorative Chair Rail Trim in Slide Outs	S	S	S	LCD TV Mounted in Bedroom With Outside Mounting Bracket (Std. on TT Models w/ Center Entertainment Only)	S*	S*/0*	0
Hidden Hinge Cabinet Doors	S	S	S	Decorative Cove Trim Along Ceiling and Overhead Cabinets	S	S	S	LCD TV Mounted in Bunk Room (Std. 30WTBSK, 831BHWS)	S	S*/0*	S*/0*
Residential Full Extension Metal Soft Close Drawer Guides	S	S	S	Screwed and Glued Cabinetry	S	S	S	Jack Knife Sofa (Std. 832BHDS 2nd Sofa, 8524RLBS, 8529BRWS)	--	S*	S*
Extra Large Double Door 2 Way Refrigerator	S	S	S	Solid Wood and Raised Panel Doors and Drawers	S	S	S	Deluxe Tri-Fold Sleeper Sofa w/ Storage (N/A w/ 8524RLBS)			
Solid Surface Corian Kitchen Countertops	S	S	S	Upgraded Cabinetry Hardware	S	S	S	(Opt. 831BHWS, 831BHDS, 832BHDS 2nd Sofa)	S*	S/0*	S*
Real Tile Backsplash	S	S	S	Engineered Mold and				Swivel Rocker Chair (Opt. 8524RLBS ILO Sofa)	--	--	0*
Flush Mount Stainless Steel Sinks With "High Rise" Lift-Off	S	S	S	Mildew Resistant Floor Covering	S	S	S	Push Back Recliner	S*	S*	S*
6 Gallon Quick Recovery Auto Ignition Gas/Electric Water Heater	S	S	S	Bedroom Carpet	0	0	S	Lazy Boy Swivel Recliner Option: Available ILO All Units			
Residential Serta Mattress Upgrade	S	S	S	Floor Ducted Furnace	S	S	S	With Standard Pushback Recliner	0*	0*	0*
Outside Speakers	S	S	S	15,000 BTU Ducted Roof Air	0	0	0	Lazy Boy Swivel Recliner Option: ILO Theater Seating (8320KBS only)	--	0*	--
LCD TV With 5.1 Digital Dolby Surround Sound Speaker System and Multi-directional Antenna	S	S	S	2nd Roof A/C w/ Chill Chaser Heat Strip in Bedroom and 50 Amp Service and Digital Dual Thermostat	0	0	0	Theater Seating: Available ILO Standard Recliner (Std. 8529RLWS, 831CLBSS) (Opt. w/ 30WIKSS, 831RESS, 8320KBS, 8528CKWSA Only)(ILO 67" HAB Sofa Only All Models Except 30WRLIKS, 832IKBS, 8528CKWSA, 8528IKWS, 8529IKBS)			
Multi Zone Stereo w/ DVD/CD/AM/FM and Bluetooth Control	S	S	S	Fireplace (Std. 831RESS) (Required 8320KBS, 832FLBS, 8528RKWS, 831CLBS, 8528BHOK, 8529RLWS) (Opt.30WFKSS, 30WIKSS, 30WRLIKS, 832IKBS, 8528CKWSA, 8528IKWS, 8529IKBS)	0*	S*/0*	0*	(ILO Chaise Sofa 832FLBS)	0*	S*/0*	S*/0*
Touch Button Control Panel w/ App Control	S	S	S	110V Ceiling Fan	--	--	0	Day/Night Shades	S	S	S
Thermostatically Controlled Heated Holding Tanks	S	S	S	Carbon Monoxide Detector	S	S	S				

STANDARDS & OPTIONS ARE SUBJECT TO CHANGE.



MODELS	V	TT	FW
Deluxe Interior Window Treatment	S	S	S
44" Family Style Dinette (N/A w/ 30WRLKS, 832BHIKWS, 832OKBS, 832IKBS, 8528IKWS, 8529BRWS, 8529RLWS, 8529IKBS)	S*	S*	S*
48" X 84" Spacious King-U-Style Dinette (N/A w/ 30WRLKS, 831RESS, 832BHIKWS, 832IKBS, 832FLBS, 8524RLBS, 8528CKWSA, 8528IKWS, 8529RLWS, 8529BRWS, 8529IKBS)	S*/O*	O*	O*
Free Standing High Pressure Laminated Table With Swing Level Leg	S	S	S
Free Standing Table and Chairs (Std. 30WRLKS, 832OKBS, 832IKBS, 8528IKWS, 8529RLWS, 8529BRWS, 8529IKBS)	O*	S*/O*	S*/O*
Stainless Steel Appliances	O	O	O
Raised Refrigerator Panels (N/A 8529IKBS)	O	O	O*
Large Auto Gas/Electric Refrigerator	S	S	S
12 Cubic Foot Auto Gas/Electric Refrigerator W/ Stainless Steel Panels (8529IKBS Only)	--	--	S*
Residential Refrigerator w/ Inverter (Opt: 831CLBSS, 8528BHOK, 8529RLWS)	--	O*	O*
Three Burner High Output Gas Range with Glass Top Cover	S	S	S
Water-Pur Filtration System	S	S	S
Counter Top Extension (N/A: 30WFKSS, 30WIKSS, 30WRLKS, 831CLBSS, 832BHIKWS, 832IKBS, 8528CKWSA, 8528IKWS, 8529RLWS, 8529IKBS)	S*	S*	S*
Trash Can in Kitchen (Most Models)	S	S	S
Tub Surround	S	S	S
Radius Glass Door Shower (N/A 30WTBSK, 831BHDS)	S*	S*	S
Large Shower w/ Sliding Glass Door (Std. 30WFKSS)	S*	--	--
Bathroom Skylight	S	S	S
Interior Gas and Electric Switches	S	S	S
Water Heater By-Pass Kit	S	S	S
Residential Style Porcelain Bowl Foot Flush Toilet	S	S	S
Maxxair® Ventilation Fan and Vent Cover	S	S	S

MODELS	V	TT	FW
Maxxair® Ventilation Fan w/ Power Lid and Vent Cover	--	--	S
Extra Maxxair® Ventilation and Vent Cover	O	O	O
King Bed Slide (30WRLS, 831CLBSS Only)	S*	S*	--
EXTERIOR FEATURES			
Fully Aluminum Frame (Floor, Sidewall, & Roof)	S	S	S
Insulation Factors R-7 Side Wall, R-12 Floor and R-14 Roof	S	S	S
Radius Roof With Vaulted 83" Interior Ceilings	S	S	S
Livingroom Slide Out 73" Height For Easier Access to Seating Area	S	S	S
One Piece Seamless Roofing Membrane	S	S	S
TV Antenna w/ Cable & Satellite Hook-Up	S	S	S
Bike Rack Ladder Attachment	O	O	O
Rear Bike Deck (350 lbs. Max Load) (8529IKBS Only)	--	--	O*
Laminated Fiberglass Sidewalls With High Gloss Finish	S	S	S
Laminated Champagne Color Fiberglass Sidewalls With High Gloss Finish and Color Keyed Roof	O	O	O
Electric Slide-Out(s)	S	S	S
Decorative Frame Skirting	S	S	S
Distinctive Black Exterior Trim	S	S	S
Power Awning With Adjustable Rain Dump and LED Lighting	S	S	S
Shielded Awning Covers	O	O	O
Awning Slide Topper	O	O	O
30" Primary Entrance Door (Most Models)	S	S	S
Friction Hinge Entrance Door	S	S	S
Sliding Glass Patio Door (831CLBSS Only)	--	O*	--
Lighted Entry Step	S	S	S
Large Grab Handles	S	S	S
Tinted Bonded Frameless Windows	S	S	S
Thermo Pane Window Upgrade	O	O	O
Vista Slide Windows w/ Free Standing Table and Chairs	S*/O*	S*/O*	S*/O*
Outside Gas Grill and Worktable	O	O	O

MODELS	V	TT	FW
Outside Grill Prep w/ LP Hookup and Backer	S	S	S
Outside Shower	S	S	S
Front Outside "Trunk" Storage Separated From Heated Pass Thru Storage Compartment	--	--	S
Outside Antifreeze Inlet for Convenient Winterizing	S	S	S
Slam Latches on Most Exterior Storage Doors	S	S	S
Slam Latch on Both Side Pass Thru Storage Doors & Front Compartment Door	--	--	S
Slam Latch on Pass Thru Storage Doors (Models w/ Front Bedrooms Only)	--	S*	--
Magnetic Storage Door Latches	S	S	S
Two 30 lb Gas Bottles	S	S	S
Molded Bottle Cover	--	S	--
Enclosed Gas Bottles w/ Storage Door Access	S	--	S
Surface Coated Steel I-Beam Frame	S	S	S
Power Front Jack	O	O	S
4.0 Leveling Jacks	O	O	O
Easy Lube Axles	S	S	S
15" Tires With Triple Step	S	S	S

V = VLITE, TT = CLASSIC SUPER LITE TRAVEL TRAILER, FW = CLASSIC SUPER LITE FIFTH WHEEL

S = STANDARD, O = OPTIONAL, -- NOT AVAILABLE, * = SELECTED MODELS



PRE-DELIVERY INSPECTION FACILITY

20,000 square feet of quality assurance. The bare essentials for a premium product. This state-of-the-art facility gives immediate daily feedback to production for quality assurance in every unit built.



Forest River, Inc. encourages our customers to purchase their Forest River products from a local dealership whenever possible for the following reasons:

- 1) Forest River, Inc. dealers are independently owned and operated businesses so priority service and scheduling is at their discretion and is often provided to customers that purchased their unit at that dealership.
- 2) Purchasing locally allows customers to establish meaningful relationships with a dealer, enhancing the RV experience through assistance with product questions, user tips or RV regulations for your state or country, and much more!
- 3) Canadian customers must meet requirements to bring an RV purchased out of the country to their home. These requirements may involve additional inspections and certifications, taxes and fees. Your local Canadian Dealer is a professional at meeting these requirements.
- 4) Scheduling timely warranty repairs and adjustments through a local dealership provides far greater flexibility and convenience to you, the customer!

It is the goal of Forest River, Inc. that all of our RV owners fully enjoy the RV experience and that customer satisfaction meets or exceeds their expectations!

24/7 EMERGENCY ROADSIDE ASSISTANCE

For a worry-free ownership experience

Forest River includes one

year of Coach-Net RV Technical & Roadside Assistance with each RV purchase. Whether new to the RV lifestyle or an experienced RV enthusiast, Forest River owners have 24/7 access to technical, operational and emergency road service coverage throughout the US & Canada.

Coach-Net's fast, dependable service is just a phone call away.

Coach-Net®
RV Technical & Roadside Assistance

LOOK FOR OUR OTHER POPULAR LINES OF FLAGSTAFF CAMPING TRAILERS.



Flagstaff Super V, Super Lite Travel Trailers & Fifth Wheels



Flagstaff Micro Lite & Shamrocks



Flagstaff MAC, SE, Classic, High Wall & Hard Side Camping Trailers.

Specification Definitions

GVWR (Gross Vehicle Weight Rating) - is the maximum permissible weight of the unit when fully loaded. It includes all weights, inclusive of all fluids, cargo, optional equipment and accessories. For safety and product performance do NOT exceed the GVWR.

GAWR (Gross Axle Weight Rating) - is the maximum permissible weight, including cargo, fluids, optional equipment and accessories that can be safely supported by a combination of all axles.

UVW (Unloaded Vehicle Weight)* - is the typical weight of the unit as manufactured at the factory. It includes all weight at the unit's axle(s) and tongue or pin and LP Gas. The UVW does not include cargo, fresh potable water, additional optional equipment or dealer installed accessories.

*Estimated average based on standard build optional equipment.

CCC (Cargo Carrying Capacity)** - is the amount of weight available for fresh potable water, cargo, additional optional equipment and accessories. CCC is equal to GVWR minus UVW. Available CCC should accommodate fresh potable water (8.3 lbs per gallon). Before filling the fresh water tank, empty the black and gray tanks to provide for more cargo capacity.

** Estimated average based on standard build optional equipment

Each Forest River RV is weighed at the manufacturing facility prior to shipping. A label identifying the unloaded vehicle weight of the actual unit and the cargo carrying capacity is applied to every Forest River RV prior to leaving our facilities.

The load capacity of your unit is designated by weight, not by volume, so you cannot necessarily use all available space when loading your unit.

FLAGSTAFF

Warranty

For details on Flagstaff's complete warranty program, see your Flagstaff dealer.

When it comes to backing products with the same quality and commitment it does when it begins the manufacturing process, the only name you have to remember when you're looking for a recreational vehicle is Flagstaff. Flagstaff offers the following additional limited warranties to the original purchasers. Consult written warranty for details.

1. Twelve-year vinyl roof warranty,
2. Two-year fiberglass warranty,
3. Ten-year Torflex® axle warranty,
4. One-year bumper to bumper warranty,
5. Available second-year warranty



Learn More

Scan this barcode using a QR Reader on your smart phone to learn more about Forest River.



A Berkshire Hathaway company.

201 WEST ELM MILLERSBURG, IN 46543 WWW.FORESTRIVERINC.COM/FLAGSTAFF 574.642.2640

YOUR FLAGSTAFF DEALER

All information contained in this brochure is believed to be accurate at the time of publication. However, during the model year, it may be necessary to make revisions and Forest River, Inc., reserves the right to make all such changes without notice, including prices, colors, materials, equipment and specifications as well as the addition of new models and the discontinuance of models shown in this brochure. Therefore, please consult with your Forest River dealer and confirm the existence of any materials, design or specifications that are material to your purchase decision. Litho. U.S.A. FOR 1386 W-2016.10.11