

2017

PHAETON®



TIFFIN  
MOTORHOMES





SHOWN 44 OH FLOOR PLAN WITH RUSTIC CANYON EXTERIOR PAINT SCHEME



SHOWN 44 OH FLOOR PLAN WITH AMBER GLAZED CABINETS & TRANQUIL INTERIOR



AMBER GLAZED CABINETS & TRANQUIL INTERIOR



2017

PHAETON

# THE PERFECT GETAWAY VEHICLE.

Remarkable in every way, the 2017 Phaeton brings the pampered comfort of first-class travel to the open road. It's easy to see why this model has been called America's favorite Class A diesel pusher. From its five-star bedroom suite to chef-friendly kitchen, our elegantly appointed coach is a showcase of luxury, loaded with thoughtful amenities to maximize fun on the go. Floor plans spoil you with spaciousness, with 7' ceilings, four slides, and lengths up to 45'. Best of all, the luxurious Phaeton is also remarkably affordable.



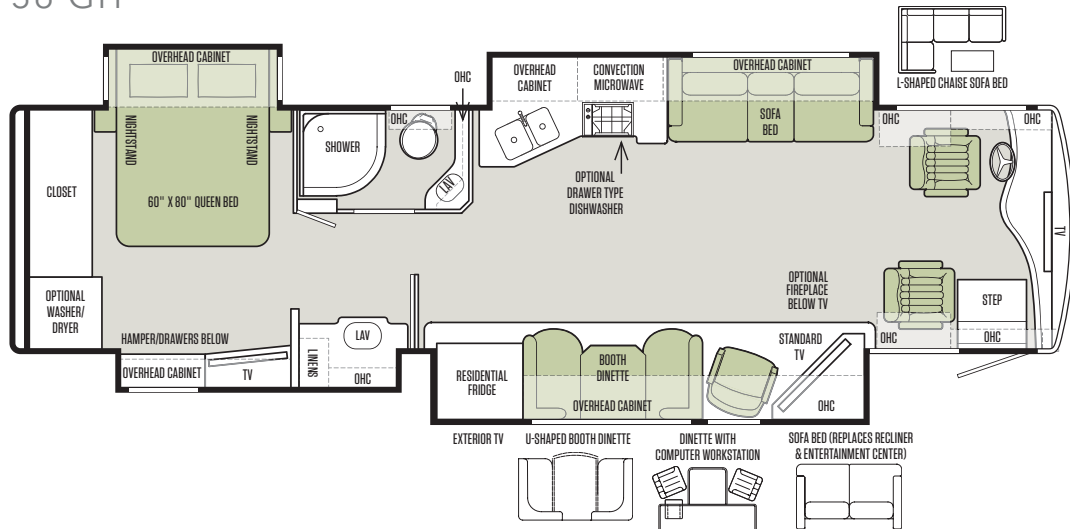
SHOWN 44 OH FLOOR PLAN WITH AMBER GLAZED CABINETS & TRANQUIL INTERIOR



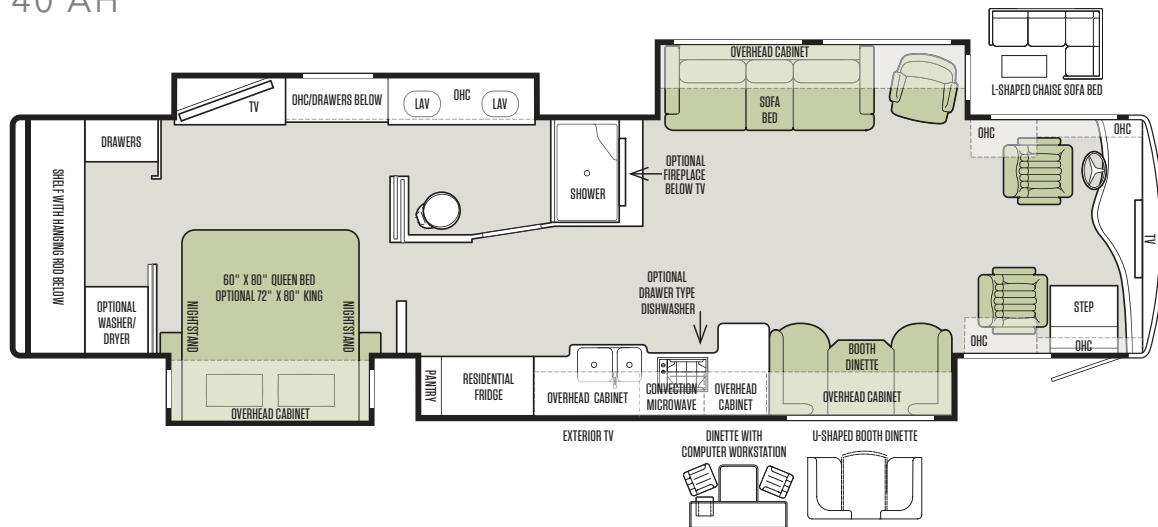
## FLOOR PLANS

Thoughtful in every detail  
and in every dimension.

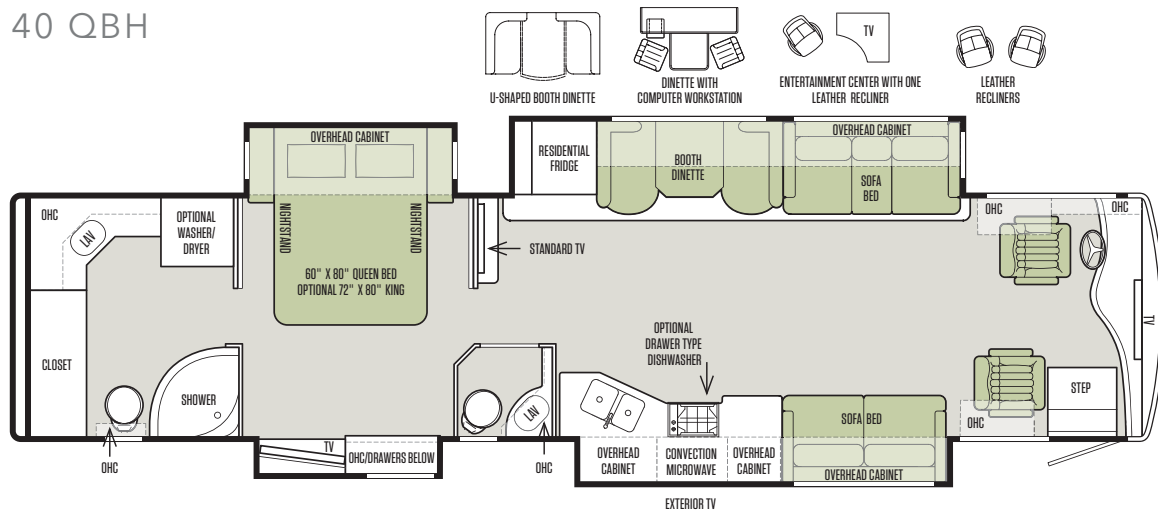
### 36 GH



### 40 AH



### 40 QBH

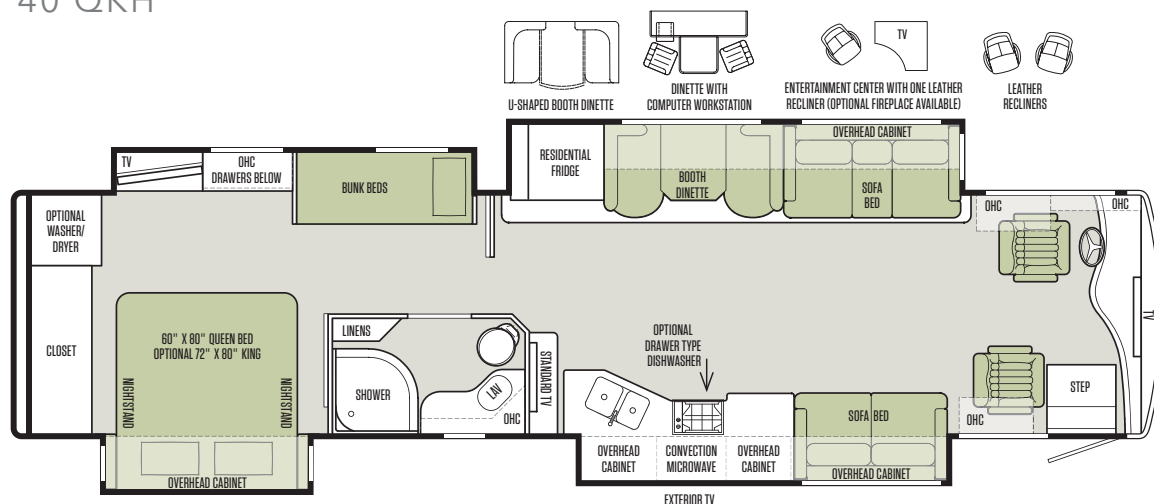


## FLOOR PLANS

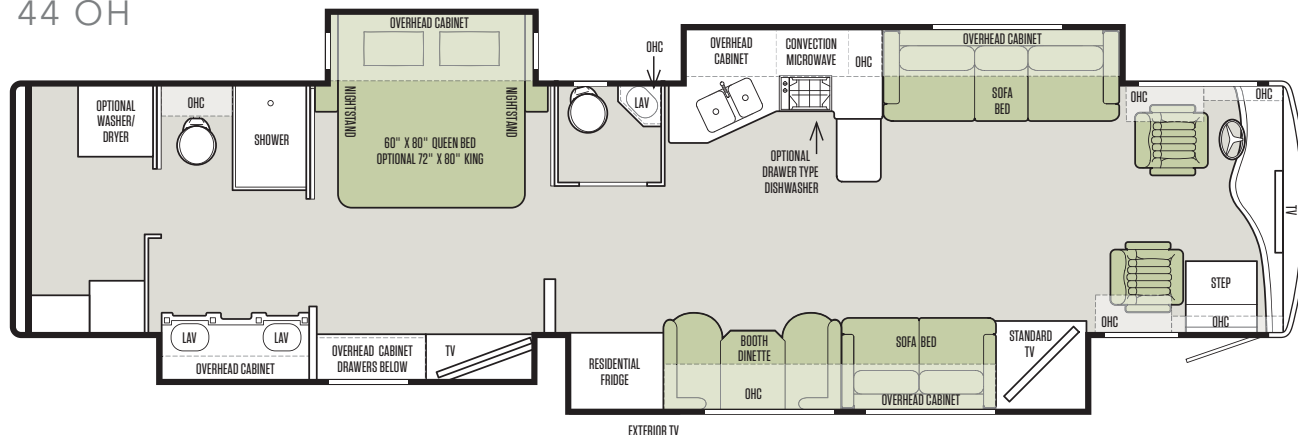


The design of every Tiffin floor plan must meet four essential criteria:  
**Maximum space.** **Optimal organization.** **Relaxation plus.** **Elegant atmosphere.**  
**MORE** plans offer your family the most comfortable layout for life on the road.

### 40 QKH



### 44 OH



Note: Standard Living Area/Dinette Shown. For a complete list of furniture options for the 44 OH floor plan, see the specification listings. Window placement will vary per furniture selection.

Available on the Phaeton 44 OH floor plan only:



The Phaeton 44 OH is built on a Tiffin PowerGlide® chassis seamlessly integrated with the coach body, which means one-stop Tiffin service for both coach and chassis. Delivering durability, reliability, performance, and control, the PowerGlide offers everything an owner could wish for. It also carries an impressive warranty: Three years or 50,000 miles against structural defects in materials and workmanship on the chassis, drive train, and suspension. Five years or 100,000 miles for Cummins engine, and five years or 200,000 miles on Allison transmission.

## INTERIOR DÉCOR

Now it's time to personalize your coach.

1

Start with our handcrafted hardwood cabinetry available in your choice of luxury finishes: Amber Glazed, English Chestnut or Mocha.

### CABINETS



AMBER GLAZED



ENGLISH CHESTNUT



MOCHA

### STANDARD FLOORING



TILE



CARPET

2

Then, add texture with your choice of designer fabric suites: Midnight, Tranquil or Vintage. All fabrics are treated for stain resistance.

### MIDNIGHT

#### LIVING AREA



PILLOWS



VALANCE

#### KITCHEN



BACKSPLASH



COUNTERTOP

#### SOFA & COCKPIT SEATS



STANDARD LEATHER

#### BEDROOM





## INTERIOR DÉCOR

Make your experience on the road all your own. Express yourself by choosing the interior appointments such as cabinet finishes, flooring and fabric textures for every part of your motorhome. In the 2017 Phaeton, you'll be able to go in style no matter where you go.

### TRANQUIL

#### LIVING AREA



PILLOWS



VALANCE

#### KITCHEN



BACKSPLASH



COUNTERTOP

#### SOFA & COCKPIT SEATS



STANDARD LEATHER

#### BEDROOM



### VINTAGE

#### LIVING AREA



PILLOWS



VALANCE

#### KITCHEN



BACKSPLASH



COUNTERTOP

#### SOFA & COCKPIT SEATS



STANDARD LEATHER

#### BEDROOM



## FULL-BODY PAINT SCHEMES

### PREMIUM PAINT SYSTEM

Our eight-step full-body paint system features premium grade paints sealed with four layers of superclear coat with ultraviolet protection. An additional layer of scratch-resistant plastic coating protects the front of the coach, stairwell, and entry door lock.



EMERALD SPRUCE



RUSTIC CANYON



MAROON CORAL



SUNLIT SAND



NASA



WHITE MAHOGANY



## AUTOMOTIVE

## Standard on All Models:

- Raised Rail Chassis Frame
- Air Ride 4 Air Bags Up to 40',  
6 Air Bags on Tag Axle Units
- Aluminum Wheels
- Exhaust Brake on 380 HP Chassis
- Compression Brake on 450 HP Chassis
- Adjustable Accelerator & Brake Pedals
- Allison 3000 MH 6-speed Automatic Transmission
- Air Brakes with Automatic Slack Adjusters & ABS
- 55" Wheel Cut
- Fog Lights
- Daytime Running Lights
- 18" Smart Wheel Steering Wheel
- Cruise Control
- Emergency Start Switch

## CHASSIS OPTIONS

|  | 36 GH     | 40 AH     | 40 QBH    | 40 QKH    | 44 OH     |
|--|-----------|-----------|-----------|-----------|-----------|
| Freightliner Cummins ISL 380 HP/1050 lb Torque                             | S         | S         | S         | S         | NA        |
| PowerGlide® ISL 450 HP/1250 lb Torque with<br>Independent Front Suspension | NA        | NA        | NA        | NA        | S         |
| GWR  | 38,320 lb | 38,320 lb | 38,320 lb | 38,320 lb | 45,600 lb |
| GAWR - Front   | 14,320 lb | 14,320 lb | 14,320 lb | 14,320 lb | 15,600 lb |
| GAWR - Rear  | 24,000 lb | 24,000 lb | 24,000 lb | 24,000 lb | 20,000 lb |
| GAWR - Tag Axle  | NA        | NA        | NA        | NA        | 10,000 lb |
| GCWR   | 48,320 lb | 48,320 lb | 48,320 lb | 48,320 lb | 55,600 lb |
| Alternator Amps  | 160       | 160       | 160       | 160       | 210       |
| Trailer Hitch Capacity   | 10,000 lb | 10,000 lb | 10,000 lb | 10,000 lb | 10,000 lb |
| Fuel Tank (Gallons) - Dual Fuel Fill                                       | 100       | 100       | 100       | 100       | 100       |
| DEF Tank* (Gallons)  | 13        | 13        | 13        | 13        | 15        |

\*Diesel Exhaust Fluid (DEF) is the active component used in Selective Catalytic Reduction (SCR) engines to reduce nitrogen oxide emissions by 90% to meet EPA standards.

## WEIGHTS &amp; MEASURES

## Overall:

|  | 36 GH       | 40 AH       | 40 QBH      | 40 QKH      | 44 OH             |
|--|-------------|-------------|-------------|-------------|-------------------|
| Overall Length (Approximate**)                         | 38' 2"      | 41' 4"      | 41' 4"      | 41' 4"      | 45'               |
| Overall Height with Roof Air (Maximum)                 | 12' 7"      | 12' 7"      | 12' 7"      | 12' 7"      | 13' 2"            |
| Interior Height  | 84"         | 84"         | 84"         | 84"         | 83"               |
| Overall Width  | 101"        | 101"        | 101"        | 101"        | 101"              |
| Interior Width   | 96"         | 96"         | 96"         | 96"         | 96"               |
| Fresh Water (Gallons)                                  | 90          | 90          | 90          | 90          | 100               |
| Black Water (Gallons)                                  | 50          | 50          | 50          | 50          | 55                |
| Grey Water (Gallons)                                   | 66          | 66          | 66          | 66          | 100               |
| LPG Tank (Gallons; can only be filled to 80% capacity) | 35.7        | 35.7        | 35.7        | 35.7        | (NA) All Electric |
| Basement Storage (Cubic Feet – Approximate)            | 111         | 157         | 157         | 157         | 253               |
| Wheel Base   | 228"        | 266"        | 266"        | 266"        | 310"              |
| Tire Size  | 275/80R22.5 | 275/80R22.5 | 275/80R22.5 | 275/80R22.5 | 295/80R22.5       |
| Minimum Garage Height                                  | 13'         | 13'         | 13'         | 13'         | 14'               |

\*\*The approximated coach lengths do not include side-view mirrors and rear ladders.

## GENERAL EXTERIOR

## Standard on All Models:

- Hydraulic Automatic Leveling Jacks
- Large Tinted One-piece Windshield
- Heated Power Mirrors with Integrated Cameras
- Single Motor Intermittent Wiper
- Lockable Swing-out Storage Doors with Gas Shocks
- Window Awning Package (2 Windows)
- Full-body Paint with Protective Film on Front Cap
- Remote Locking System for Entry Door
- Heated Water & Holding Tank Compartments
- Chrome Handles on Compartment Doors
- Deadbolt Front Entrance Door
- Double Electric Step
- Flush Mounted & Painted-frame Dual Pane Windows
- Exterior Patio LED Light
- Automatic Door Awning
- Metal Wrapped Automatic Patio Awning
- Motion Sensor Lighting for Exterior Storage
- 10.0 kw Onan® Manual Slide-out Generator
- Roof Ladder
- Electric Hose Reel
- Electric Power Cord Reel
- Fiberglass Front & Rear Caps
- Docking Lights
- Six 6 V Auxiliary Batteries
- Black Tank Flush System
- Water Filter
- Custom Mud Flap
- Undercoating
- Dual Fuel Fills
- 110 V Exterior Receptacle
- Digital TV Antenna
- Back-up Camera
- Cable Ready TV Hook-up
- Gravity Water Fill
- 2000 Watt Inverter with 100 Amp Converter & Transfer Switching
- Exterior TV

## Available Options:

|   | 36 GH | 40 AH | 40 QBH | 40 QKH | 44 OH |
|---|-------|-------|--------|--------|-------|
| One Storage Compartment Slide-out Tray    | O     | O     | O      | O      | O     |
| Two Storage Compartment Slide-out Trays   | NA    | O     | O      | O      | O     |
| Air Horns                                 | O     | O     | O      | O      | O     |
| In-motion Satellite Dish***               | O     | O     | O      | O      | O     |
| Pre-wired for Winegard Trav'ler Satellite | O     | O     | O      | O      | O     |
| Two Low Profile Roof ACs with Heat Pumps  | S     | NA    | NA     | NA     | NA    |
| Three Low Profile Roof ACs                | NA    | S     | S      | S      | S     |
| Aqua-Hot™ & All Electric Unit             | O     | O     | O      | O      | S     |

\*\*\*High-Definition programming is not available on a domed satellite antenna unless you subscribe to DISH Network®



## GENERAL INTERIOR

## Standard on All Models:

- 7' Ceilings
- Soft Touch Vinyl Ceiling with Trey Ceiling in Living Area
- Porcelain Tile Floor Throughout Coach
- Treated Carpet in Slide-outs
- Central Vacuum Cleaner
- Two Ducted Furnaces
- LED Lighting
- Solid Wood Cabinet Fascias & Doors with Concealed Hinges
- Complete Cable Wiring (Interfacing with Surround Sound & Satellite System)
- Home Theater Sound System with Concealed Speakers in Living Room
- Direct TV® Receiver (Requires Subscription)
- Solar & Privacy Shades
- Fantastic® Power Roof Vents
- Tank Level Monitor System
- Smoke Detector
- Electric Step Well Cover
- Wardrobe with Automatic Light
- 12 V Disconnect Switch
- Extraordinaire™ AC System

## Available Options:

|  | 36 GH | 40 AH | 40 QBH | 40 QKH | 44 OH |
|--|-------|-------|--------|--------|-------|
| Amber Glazed Solid Cabinet Doors & Drawer Fronts     | O     | O     | O      | O      | O     |
| English Chestnut Solid Cabinet Doors & Drawer Fronts | O     | O     | O      | O      | O     |
| Mocha Solid Cabinet Doors & Drawer Fronts            | O     | O     | O      | O      | O     |
| Stacked Washer/Dryer                                 | O     | O     | O      | O      | O     |
| Heated Tile Floor                                    | O     | O     | O      | O      | O     |

## COCKPIT

## Standard on All Models:

- Power Ultra Leather Driver & Passenger Seats with Passenger Footrest
- Contemporary Wraparound Dash
- Courtesy Drawer in Step Well
- Courtesy Light in Step Well
- Front Overhead TV
- Single CD Player & AM/FM Stereo
- USB Dash Receptacle
- Computer Slide-out Tray with Lock-out Rails on Passenger Side
- Driver/Passenger Side Window Solar & Privacy Shades
- Color Rear Vision Monitor System with Side-view Cameras Activated by Turn Signals
- Power Solar & Privacy Windshield Shade
- Dual Dash Fans
- Two Drawers in Dash
- Satellite-ready Radio Includes Receiver & Antenna (Requires Subscription)
- Integrated Seatbelt Brackets
- Fire Extinguisher
- Dual 12 V Dash Receptacle

## Available Options:

|                           | 36 GH | 40 AH | 40 QBH | 40 QKH | 44 OH |
|---------------------------|-------|-------|--------|--------|-------|
| In-dash Navigation System | O     | O     | O      | O      | O     |

## KITCHEN

## Standard on All Models:

- Solid Surface Countertop with Stainless Steel Sink
- Solid Surface Sink Covers
- Expand-an-island
- Folding Solid Surface Cooktop Cover
- Sink Cover Storage Racks Underneath Sink
- Single Lever Sink Faucet with Sprayer
- Stainless Steel Microwave/Convection Oven
- Built-in Waste Can (Not Available with Dishwasher)
- Stainless Steel Residential Refrigerator
- 3-burner Stainless Steel Cooktop (LPG Units Only)
- Built-in Soap Dispenser
- Galley Splash Guards

## Available Options:

|   | 36 GH | 40 AH | 40 QBH | 40 QKH | 44 OH |
|---|-------|-------|--------|--------|-------|
| Dishwasher (Deletes Built-in Waste Can) | O     | O     | O      | O      | O     |

## BEDROOM

## Standard on All Models:

- Bed Comforter with Throw Pillows
- DVD Player in Bedroom with Surround Sound
- Under Bed Storage
- Memory Foam Queen Mattress
- Ceiling Fan
- TV
- Chest of Drawers with Laundry Hamper
- Direct TV® Receiver (Requires Subscription)
- Carbon Monoxide Detector
- LPG Leak Detector

## Available Options:

|   | 36 GH | 40 AH | 40 QBH | 40 QKH | 44 OH |
|---|-------|-------|--------|--------|-------|
| Bunk Beds with Bunk Ladder/Convertible Wardrobe | NA    | NA    | NA     | S      | NA    |
| DVD Monitors in Bunk Beds                       | NA    | NA    | NA     | S      | NA    |
| Air Comfort Mattress - Queen (60" x 80")        | O     | O     | O      | O      | O     |
| Air Comfort Mattress - King (72" x 80")         | NA    | O     | O      | O      | O     |
| Memory Foam King Mattress (72" x 80")           | NA    | O     | O      | O      | O     |

## BATH

## Standard on All Models:

- Medicine Cabinet with Vanity Lights
- Skylight in Shower & LED Light
- Solid Surface Vanity Top & Bowl
- Solid Wood Custom Privacy Door
- 10-Gallon DSI Gas/Electric Water Heater
- Hand-held Shower Head with On/Off Switch
- 3-speed Fantastic® Fan



## LIVING AREA / DINETTE

## Standard on All Models:

- Ultra Leather Booth Dinette/Sleeper

## Available Options:

|   | 36 GH | 40 AH | 40 QBH | 40 QKH |
|---|-------|-------|--------|--------|
| Dinette with Computer Workstation                                   | O     | O     | O      | O      |
| Ultra Leather U-shaped Booth Dinette                                | O     | O     | O      | O      |
| Ultra Leather DE Sofa/Sleeper on Passenger Side*                    | O     | NA    | S      | S      |
| Ultra Leather Hide-A-Bed Sofa/Sleeper on Passenger Side**           | NA    | NA    | O      | O      |
| Entertainment Center with One Leather Recliner on Passenger Side    | S     | NA    | NA     | NA     |
| Ultra Leather Air Coil Sofa with Recliner on Driver Side            | NA    | S     | NA     | NA     |
| Ultra Leather DE Sofa/Sleeper on Driver Side                        | NA    | NA    | S      | S      |
| Ultra Leather Hide-A-Bed Sofa/Sleeper on Driver Side                | NA    | NA    | O      | O      |
| Ultra Leather L-shaped Chaise Sofa with Hide-A-Bed on Driver Side** | O     | O     | NA     | NA     |
| Two Ultra Leather Recliners on Driver Side                          | NA    | NA    | O      | O      |
| Entertainment Center with One Leather Recliner on Driver Side***    | NA    | NA    | O      | O      |
| Fireplace Below TV  | O     | O     | NA     | O      |

\* On 36 GH, Passenger Side Sofa Option replaces Recliner & TV/Entertainment Center.

\*\* Air Coil Option not available on both Passenger & Driver Side. For 36 GH Air Coil Option on Passenger Side only available with Front Overhead TV.

\*\*\* When Optional Entertainment Center is chosen, Pantry replaces Midsection TV.

## LIVING AREA/DINETTE PACKAGE OPTIONS FOR 44 OH

## Packages:

- Package A (Standard): Ultra Leather DE Sofa with TV Cabinet (PS), Ultra Leather Air Coil Sofa Bed (DS) & Optional Fireplace (PS)
- Package B: Ultra Leather DE Sofa with TV Cabinet (PS), Ultra Leather L-Shaped Sofa (DS) & Optional Fireplace (PS)
- Package C: Entertainment Center with Recliner (PS), Ultra Leather Air Coil Sofa Bed (DS) & Optional Fireplace (PS)
- Package D: Entertainment Center with Recliner (PS), Ultra Leather L-Shaped Sofa (DS) & Optional Fireplace (PS)
- Package E: Ultra Leather DE Sofa & Lift TV (PS) & Ultra Leather Air Coil Sofa Bed (DS)
- Package F: Ultra Leather DE Sofa & Lift TV (PS) & Ultra Leather L-Shaped Sofa (DS)
- Package G: Ultra Leather Air Coil Sofa & Lift TV (PS) & Theatre Seating (DS)
- Package H: Ultra Leather Air Coil Sofa & Lift TV (PS), 2 Recliners with Center Cabinet (DS) & Optional Fireplace (DS)
- Package I: 2 Recliners & Lift TV (PS) & Ultra Leather Air Coil Sofa Bed (DS)
- Package J: 2 Recliners & Lift TV (PS) & Ultra Leather L-Shaped Sofa (DS)
- Other Available Options: Ultra Leather Booth Dinette/Sleeper (PS – Standard), Ultra Leather U-Shaped Dinette (Non-Sleeper) (PS) & Dinette with Computer Workstation

All options may not be available in every model. Because of progressive improvements, specifications, standard & optional equipment are subject to change without notice or obligation. For a complete & up-to-date list of available options & specifications, as well as information on Tiffin's full line of motorhomes, visit [tiffinmotorhomes.com](http://tiffinmotorhomes.com).

## The 2017 Phaeton features these Tiffin innovations:



A game-changer in RV design, these slide-outs are built as seamless fiberglass units, offering superior protection from the elements. Virtually undetectable when closed. Available only on the 40 AH and the 44 OH.



This Tiffin coach will surpass a competitor's model of equivalent size in the quantity and quality of storage.





## The Tiffin Five-Star Warranty. The best in the business, bar none.

At Tiffin Motorhomes, we build for quality first and foremost, limiting our production to just 12 coaches a day to ensure meticulous craftsmanship. It may not be the most business-savvy way to run a company but it is the best way. By investing the time and effort to do things right, we want you, as a Tiffin owner, to have the utmost confidence in your coach, as well as a peace of mind you won't find with other manufacturers. You see, not only do we stand proudly behind our product, we stand behind you as well.

★ 10

YEAR  
CONSTRUCTION  
WARRANTY

The structural integrity of the welded frame of entire coach is warranted for 10 years.

★ 5

YEAR  
DELAMINATION  
WARRANTY

We guarantee against all exterior fiberglass delamination or wall separation for 5 years.

★ 1

YEAR  
COMPREHENSIVE  
WARRANTY

Your coach is warranted against defects in materials and workmanship for 12 months, or 12,000 miles of use.

★ 1

YEAR  
COACH ROADSIDE  
SERVICES

Available through Coach-Net, the country's largest RV emergency road service, this program provides 24/7 access to responsive roadside and technical assistance.

★ ONGOING  
OWNER  
SUPPORT

No other motorhome company can compare with Tiffin's exceptional customer service.

Email us at [service@tiffinmotorhomes.com](mailto:service@tiffinmotorhomes.com) or call: 256/356.8661.



## A FAMILY BUSINESS BUILT AROUND YOURS.

The strong relationships we've built with you, our customers, are the heart and soul of our company. Now, with social media, we can connect more than ever before. We invite you to follow us on Facebook, Twitter, Instagram, and Pinterest.

LEFT TO RIGHT: VAN TIFFIN, LEX TIFFIN,  
BOB TIFFIN, TRENT TIFFIN, AND TIM TIFFIN

GO TO [TIFFINMOTORHOMES.COM](http://TIFFINMOTORHOMES.COM)

Visit us on the web for more information on the 2017 Phaeton and all 2017 Tiffin Motorhomes, along with the latest product and specification updates.

FOR PARTS & SERVICE CALL 256/356.8661

[FACEBOOK.COM/TIFFINMOTORHOMES](https://www.facebook.com/tiffinmotorhomes)

[TWITTER.COM/TIFFINMOTORHOME](https://twitter.com/tiffinmotorhome)

[INSTAGRAM.COM/TIFFINMOTORHOMES](https://www.instagram.com/tiffinmotorhomes)

[PINTEREST.COM/TIFFINMOTORHOME](https://www.pinterest.com/tiffinmotorhome)

Some interior furnishings not included. Unless where noted, all content ©2017 Tiffin Motorhomes, Inc. Allegro®, Allegro Breeze®, Allegro Red®, Phaeton®, Allegro Bus®, Zephyr®, Roughing It Smoothly®, Open Road®, PowerGlide®, and Pusher® are registered trademarks of Tiffin Motorhomes, Inc. All rights reserved.