

THE WAYS OF WESTFALIA



**THE SALES TEAM
HANDBOOK**

SURF THE WAVE



p. 07

BEHIND THE WHEEL

Craftsmanship behind the scenes.

Explore the hidden craftsmanship that powers your Westfalia. From plumbing to electrical systems, discover how the production and engineering behind the scenes ensures a seamless and comfortable journey.

p. 17

THE ROAD AHEAD

Where Innovation Meets the Road.

Discover what sets Westfalia apart in the Class B market. From innovative design to top-tier performance, discover the features and advantages that make this RV uniquely suited for your next adventure.

p. 37

UNDER THE HOOD

Details That Drive Difference.

Dive into the specifics of each model. Compare features, color options, and interior decor, and explore the master spec chart to find the perfect fit for your style and travel needs.

A sketch-style illustration of a rocky coastline. The scene features several jagged rock formations in the water, with waves lapping at their bases. In the sky, several seagulls are depicted in flight. One seagull is perched on the peak of a prominent rock formation. The overall style is a light, hand-drawn sketch in a muted greenish-brown color, set against a plain, light-colored background.

WHERE IT STARTED

SMALL SIZE, BIG ADVENTURE

- **Zip where bigger RVs can't even dream**
- **An absolute blast to drive**
- **Turns on a dime**
- **Better fuel economy compared to the gas-guzzlers**
- **Parks anywhere (Malls, Casinos, Events, Driveways)**
- **Serious towing muscle (3,500 lb hitch receiver rating)**
- **Super versatile for all your outdoor escapades**
- **Your everyday ride - multi-functional marvel**
- **High resale value because everyone wants one**

Why do our fellow adventurers flock to Class B camper vans? It's simple: they offer the ultimate blend of flexibility, efficiency, and just pure fun. The Westfalia Wave isn't just a vehicle; it's your passport to spontaneous adventures and epic road trips.

Our vans dance through city streets with ease, letting you explore the urban jungle and then head off to the secluded, scenic spots others only dream of reaching. With superior fuel efficiency, you can stretch your budget further, giving you more to spend on those unforgettable experiences.

Equipped with all the essential comforts like kitchens and bathrooms, our camper vans are your cozy home on wheels. Whether you're heading to the mountains, the beach, or just across town, the Westfalia Wave is your trusty sidekick. It's not just a ride; it's a lifestyle. So go ahead, embrace the nomadic spirit and live life the Westfalia way.



A JOURNEY THROUGH TIME



1844

Established in 1844 by Johann Bernhard Knöbel, Westfalia began as a forge crafting heavy horse-drawn carts. However, the iconic journey truly began in the 1950s.



1951

1951 marked a turning point when a British Forces officer requested the conversion of a VW transit van into a mobile home, leading to the creation of the “Camping Box.” This innovative design gained rapid popularity, paving the way for Westfalia’s legacy in vehicle conversions. The Camping Box made its American debut in 1956 on the VW Type 2 Bus, becoming a favorite among American servicemen stationed in Europe, who brought these versatile campers back to the United States.



1960

The 1960s saw the introduction of the SO 34 motorhome with its practical amenities and folding roofs, enhancing space and comfort. This model achieved great commercial success in America.



1970

In the 1970s, Westfalia launched the Mercedes-Benz “James Cook,” followed by models like the “Sven Hedin” and the “Joker,” which made camper vans accessible to many households. These campervans became popular in North America for camping and outdoor activities, sold through Volkswagen dealerships.



1980

The 1980s were marked by successful collaborations with Volkswagen and Ford, introducing popular models like the VW Joker and the compact “Nugget.”



1990

The 1990s were marked by successful collaborations with Volkswagen and Ford, introducing popular models like the VW Joker and the compact “Nugget.”



2001

In 2001, Westfalia was acquired by DAIMLER AG (Mercedes-Benz), leading to the end of its collaboration with Volkswagen in 2003. Volkswagen chose to produce its camper vans independently, which marked the end of Westfalia’s commercial presence in the North American market.



2010

By 2010, under the Rapido Group, Westfalia focused on market-oriented development with new models like the Amundsen and Kepler, expanding its production facilities in France and Germany.



2024

Today, Westfalia continues to symbolize adventure and freedom. Outside of Europe Westfalia is now produced in Ontario, Canada by Roadtrek Inc., Westfalia returns to the North American market with the 2024 Westfalia Wave.

A Legacy of Innovation: Roadtrek and Rapido

In 2019, Roadtrek proudly became part of Group Rapido LLC, a pioneer in the RV industry known for its innovative spirit since Constant Rousseau’s invention of a canvas folding caravan in 1961. This partnership brings Roadtrek Inc., the manufacturer of the Westfalia brand in North America, into a lineage of excellence. Sharing a passion for customer satisfaction, top-notch quality, and meticulous attention to detail, Roadtrek and Rapido are united in their mission to elevate your travel experience.





BEHIND THE WHEEL

Explore the hidden craftsmanship that powers your Westfalia.

BUILDING DREAMS

The Westfalia Production Hub:

Welcome to our beating heart—the Westfalia production and assembly facility in Cambridge. Renowned as North America’s pinnacle, it boasts industry-leading processes and two cutting-edge 19-station production lines. Designed for comfort and safety, our workspace keeps feet on solid ground—no under-chassis crawling here. With optimal visibility and easy access, it’s not just a place to work; it’s a place to thrive.



Happy Team, Great Results:

At Westfalia, we believe in happy vibes and top-notch outcomes. Our dedicated team members are the pulse behind our success, ensuring each vehicle is crafted with care and precision. Because when our team thrives, so does the quality of every Westfalia Wave that hits the road.

8

MILLED TO PERFECTION

Cabinetry Reimagined

Cutting-Edge Craftsmanship:

In the Westfalia Wave, we take cabinetry to the next level with precision CNC (Computer Numerical Control) technology. This advanced milling process allows for seamless cabinet box folding during assembly, providing superior structure without the need for corner moldings—common shortcuts in competitors' products.

Eco-Friendly Efficiency:

Our CNC mapping optimizes each sheet of material, significantly reducing waste and championing our commitment to environmental sustainability.

Built to Endure:

Every cabinet is designed with longevity in mind. We combine attention to detail with quality materials—plywood, screws, and glue—to create cabinetry that stands the test of time.

Easy Installation and Service:

Ready-to-assemble (RTA) connectors provide concealed yet accessible fasteners, making cabinets easy to install and service. Enjoy the perfect blend of functionality and aesthetics.

Stylish Finishes:

Our cabinetry features matte black hardware with an attractive, Euro-style finish, adding a touch of modern elegance to your Westfalia Wave.



MASTERING CRAFTSMANSHIP

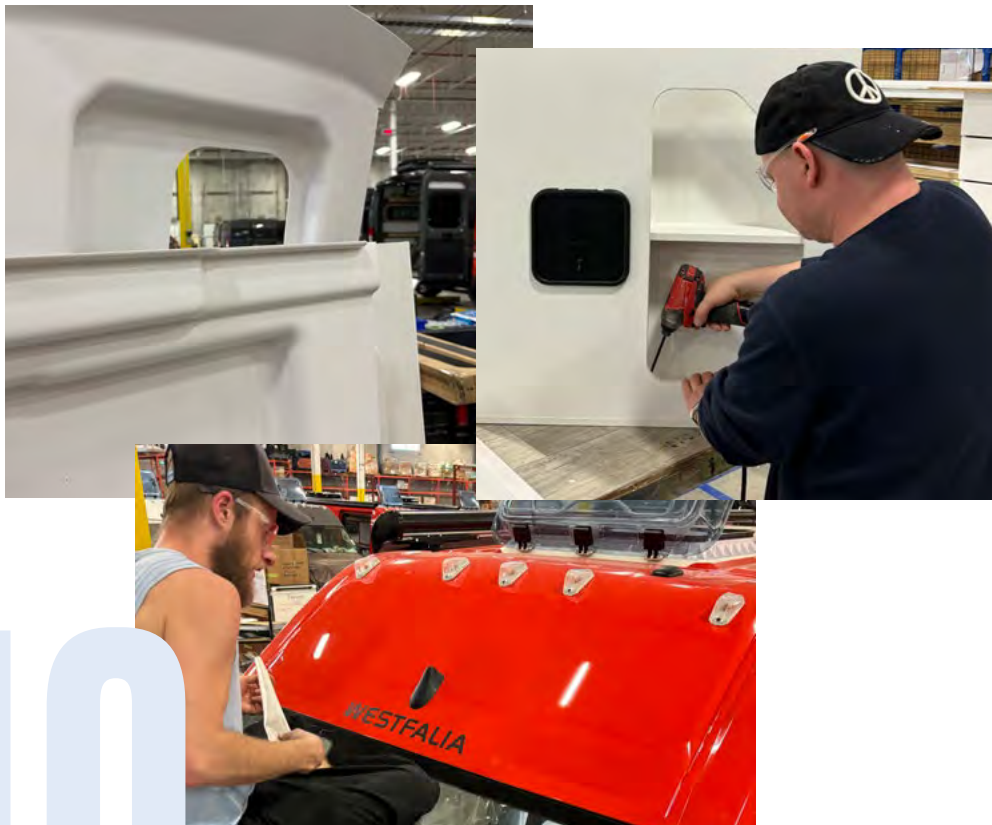
At Westfalia, we're the architects of adventure, blending cutting-edge manufacturing with visionary design:

Vacuum-formed Plastic/ABS Components: Precision meets durability in every component, ensuring longevity and aesthetic appeal.

CNC Precision and Consistency: Our state-of-the-art CNC technology ensures each part is crafted with unparalleled accuracy and reliability.



Modular Cabinet Construction: Versatile and stylish, our cabinets are designed for maximum functionality and aesthetic charm.



In-House Research and Development: Innovation is at our core. Our in-house R&D team pioneers new ideas and technologies, ensuring each Westfalia Wave sets new standards in style and function.

WEATHER THE **THREE-SEASON** JOURNEY

Three-Season Capabilities

Insulation Beyond the Norm:

At Westfalia, we don't just insulate—we perfect it. Our precision-cut poly resin insulation is expertly bonded to the chassis for a seamless fit that stays put.

Your Sanctuary on Wheels:

Whether you're cruising the highways or unwinding at your favorite campsite, our insulation keeps the noise out and the comfort in. It's your secret weapon against chilly nights and scorching days, ensuring every journey is a cozy escape.

Certified for Your Peace of Mind:

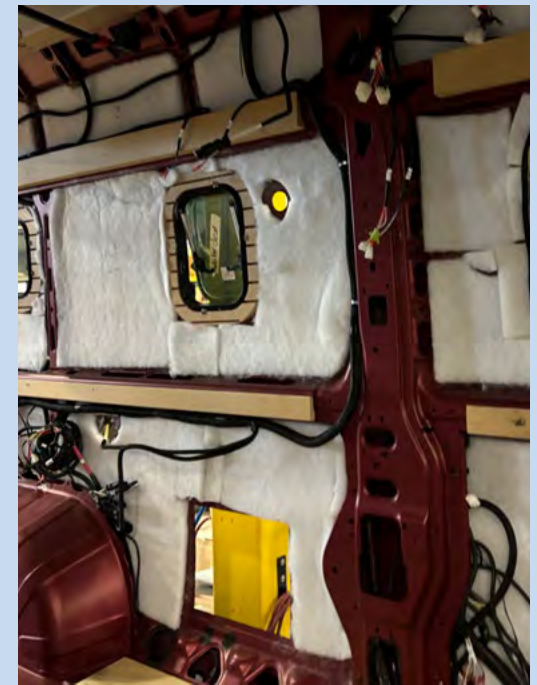
Rest easy knowing our insulation is rigorously tested and certified for automotive and RV standards, guaranteeing durability and reliability wherever the road takes you.

Crafted for Adventure:

From its custom-cut polyester fiber non-woven fabric to the smartly designed vinyl-lined headliner, every detail is engineered to enhance comfort while resisting mold, odors, and corrosion.

Designed for Convenience:

With fresh water tanks inside the coach and a cassette toilet system for black waste management, your Westfalia Wave is equipped for effortless, carefree travels.



SOLID GROUND

Interlocking Floor Structure

Crafting Stability:

At Westfalia, every detail matters—including our interlocking floor structure. We use polyurethane adhesive and countersunk fasteners to bond premium ½” Grade A plywood directly to the chassis floor. This ensures a robust foundation that stands the test of time.

Precision Engineering:

Our subfloor is meticulously bonded to the chassis, eliminating deviations and maintaining floor integrity.

Ready for Adventure:

The interlocking ½” premium plywood flooring is perfectly flat and seamlessly bonded, providing a stable base that’s ready for floor covering. Acrylic floor adhesive ensures a precision fit to the chassis profile.

Crafted for Longevity:

From bonding techniques to precision fittings, every aspect is designed to enhance structural integrity and provide a solid foundation for your Westfalia Wave, ensuring years of reliable performance.



ENSURING LEAK-FREE PERFORMANCE

Submersion Testing

Every Westfalia Wave undergoes rigorous submersion testing on all holding tanks to validate a leak-free plumbing system.

Precision Testing Process:

First, air pressure is applied to the inlet of the completed tank assembly. Then, the tank is submerged underwater for a full minute. This meticulous process confirms the absence of air bubbles, ensuring the integrity and reliability of your Westfalia's plumbing system.

Built to Last:

This mandatory testing is just one example of our dedication to quality and reliability in every Westfalia we build. Rest assured, your adventure-ready vehicle is crafted with precision and care to withstand the demands of your journeys.

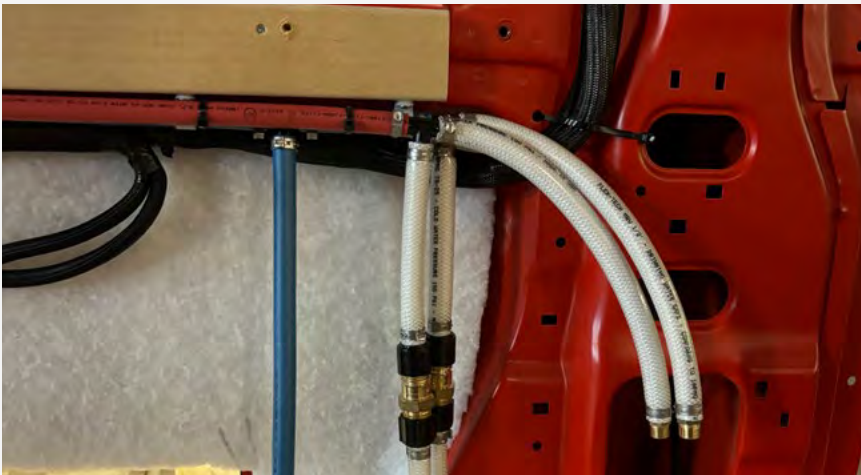


PRECISION IN EVERY CONNECTION

Plumbing and Electrical

Excellence in Detail:

At Westfalia, meticulous attention to detail, safety, and industry codes defines our approach to plumbing and electrical systems.

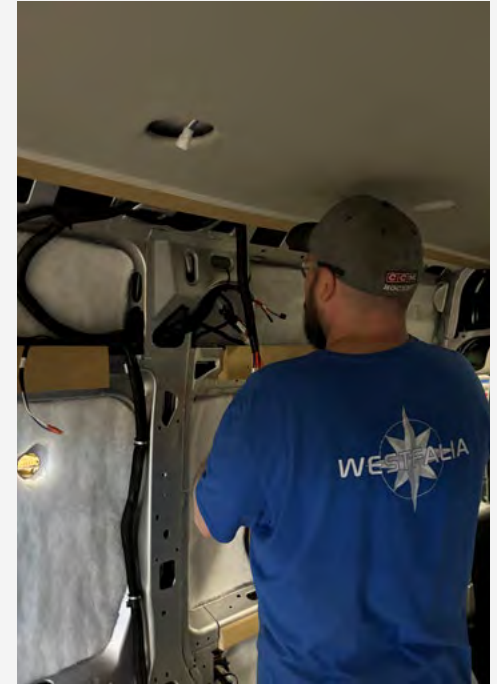


Engineered for Durability:

Our plumbing lines are expertly grommeted, there by safeguarding system integrity and preventing future issues. This commitment ensures your Westfalia Wave is built to withstand the rigors of the road.

Smart Battery Management:

With a master battery kill switch, your Westfalia is equipped to prevent battery discharge during storage or when not in use. It's a small detail that makes a big difference in maintaining peak performance.



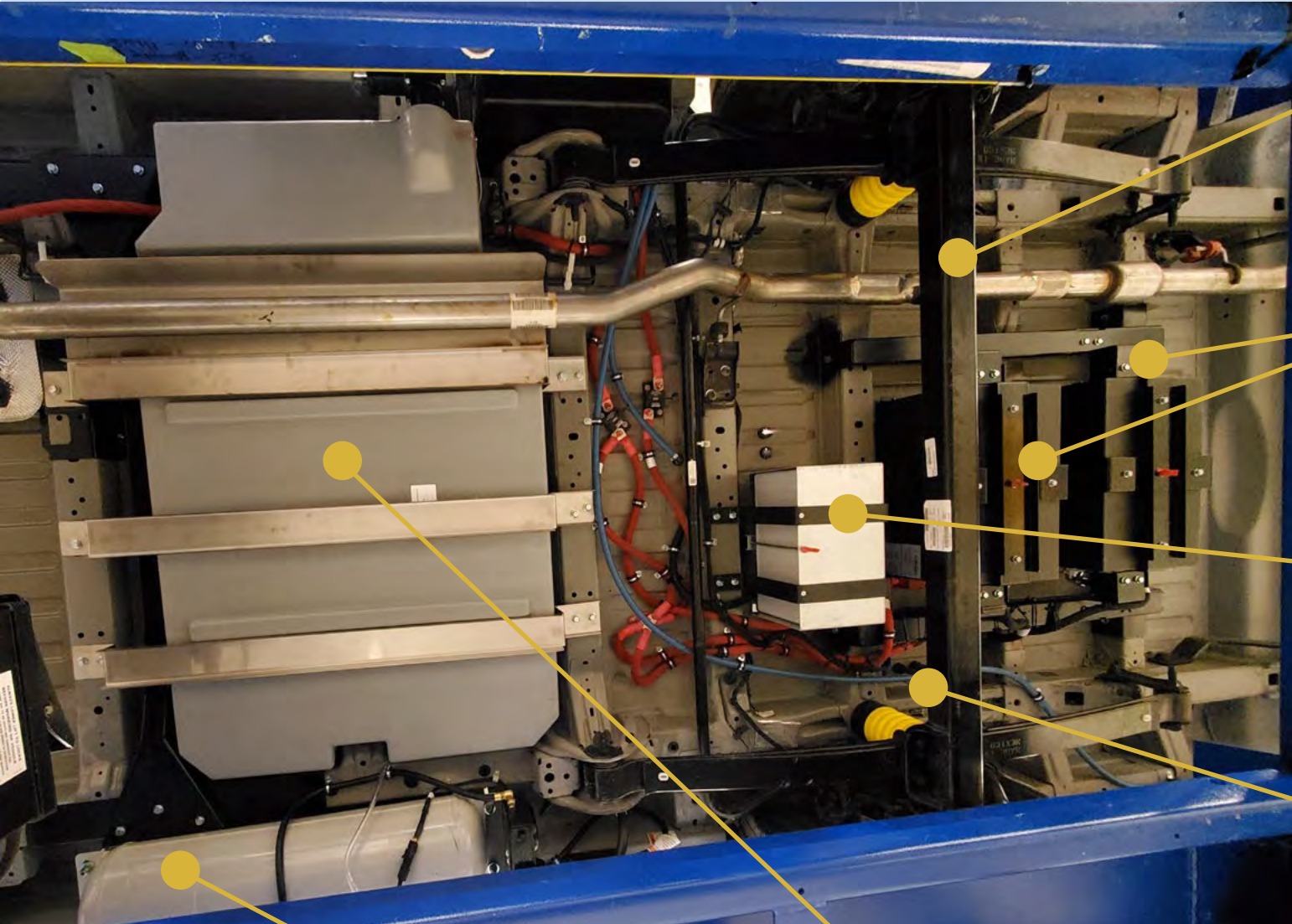
Superior Electrical Connections:

We rely on the best—Wieland's positive latching wiring harness system—to guarantee stable and error-free electrical connections. This advanced technology ensures clear paths for electrical currents, enhancing reliability and performance.



UNDERCARRIAGE EXCELLENCE

At Westfalia, we leave no stone—or undercarriage—untuned. Our meticulous approach ensures that even the undercarriage is organized and easy to service, reflecting our commitment to excellence in every aspect of your vehicle.



REAR AXEL

LITHIUM-ION

AGM

SUMO SPRINGS

PROPANE TANK

GREY TANK

CRAFTING QUALITY

Our rockstar Quality Team blends expertise from automotive, plastic molding, and vehicle manufacturing backgrounds to ensure every Westfalia Wave meets our sky-high standards. Their passion for exceeding expectations drives our commitment to consistency and innovation, ensuring each ride is not just safe, but spectacular.

CONTINUOUS IMPROVEMENT:

We thrive on evolution. From the tiniest component to the grand finale, every stage undergoes meticulous checks and balances. At Westfalia, we don't just meet standards; we set them—pushing boundaries to deliver perfection with every wave.

CERTIFIED ASSURANCE:

Here's the kicker: every new Westfalia Wave meets CSA standards for Canada and RVIA standards for USA shipments. So buckle up and hit the road with confidence, knowing your adventure meets the gold standard of safety and satisfaction.

COMPREHENSIVE TESTING:

Picture this: appliances get tested, finishes get scrutinized, and roads get conquered. Our rigorous process includes everything from road and wind tests to water and rain station trials. It's not just quality assurance; it's a promise of top-tier performance and reliability.



Humidity testing empowers our inspectors to detect any moisture lurking behind interior coverings like wall or ceiling panels.



THE ROAD AHEAD

Discover what sets Westfalia apart in the Class B market.

YOUR FAVORITE WESTIE ALL GROWN UP



7. TRUNK STORAGE

Leave nothing behind, supply all your adventurous ambitions.



1. SPACIOUS POPTOP

4' peak ceiling clearance and oversize 52"x79" mattress.



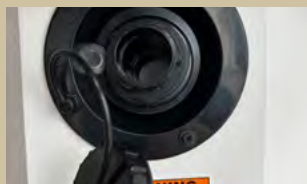
2. LOADED CHASSIS

Maximum safety and premium customer conveniences.



6. REAR BED FLEXIBILITY

Maximize sleeping space needs versus storage needs.



5. HUGE WATER CAPACITY

More water when you need it, with less frequent refilling.



4. BENCH VERSATILITY

Patented seat design easily converts to additional sleeping.



3. ENERGY TO SPARE

Plan your agenda with your van, not in spite of your van.

18

 WESTFALIA

ROOM FOR THE WHOLE CREW

Ultimate Sleeping Flexibility for Your Adventures.

No other Class B offers such versatile sleeping options for multiple guests. Westfalia's patented bench/bed combo, combined with the pop-top option and standard coach rear bed, allows for up to 6 people to sleep comfortably.

Patented Bench/Bed Combo: Our unique bench/bed transforms in seconds, maximizing interior space when not in use. Perfect for creating a cozy sleeping area without sacrificing room for daytime activities.

Pop-Top Magic: With the pop-top option, you'll have additional sleeping space that makes your Westfalia a true multi-level adventure home.

Important Note: Please note, the vehicle is restricted to 4 seat belts for travel.



POP THE TOP 1

Unleash the Space

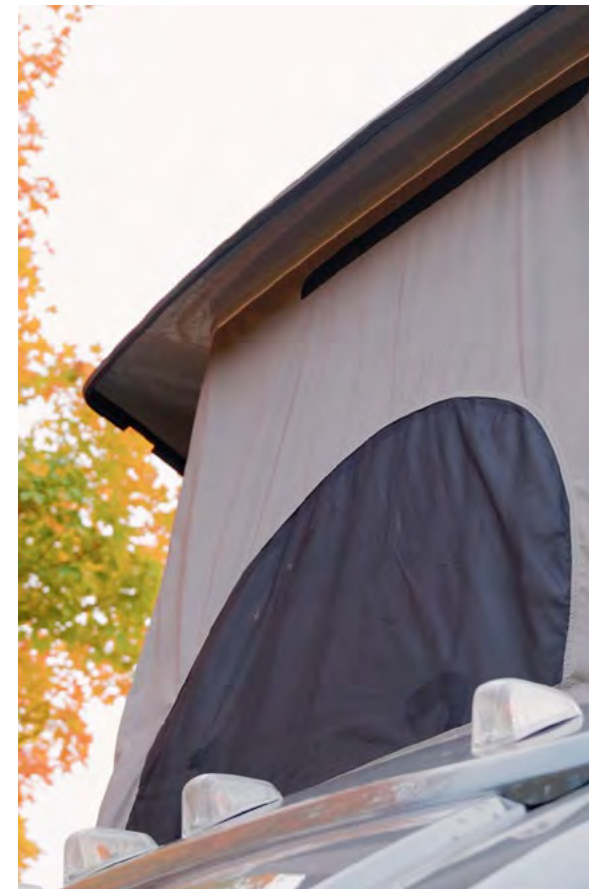
Experience the largest space in its class with the Westfalia pop-top, featuring a roomy 52" x 79" mattress and a 49" ceiling clearance. Designed and assembled in house, our pop-tops offer comfort and convenience with premium craftsmanship.

Spacious & Comfortable: Enjoy a 49" peak ceiling clearance and the largest mattress in the industry, ensuring restful sleep.

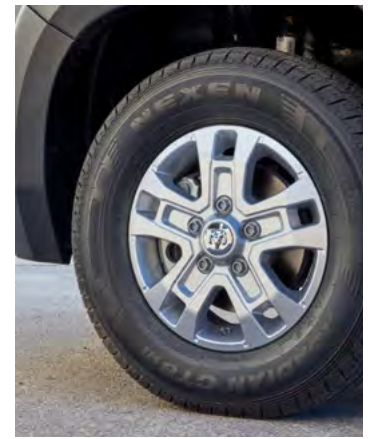
Stay Connected: Keep your accessories within reach with USB charging ports and a handy travel tray for organized storage.

Bright & Rain Panel: Featuring three large zippered windows/screens, an adjustable brightness LED light strip, and a ceiling skylight/vent with a screen and night shade.

Our pop-tops are crafted with premium materials, including custom-stitched canvas, and provide ample ventilation and natural light. The functional USB charge tray and LED light strip add to the comfort of this spacious second-floor accommodation.



RAM PROMASTER 2



Discover the Power of the Ram ProMaster 350 159" EXT Chassis (2024)*:

Unleash the thrill with the robust Ram ProMaster 350, equipped to redefine your journey with:

- A 3.6L V6 engine paired with a 9-speed automatic transmission, delivering 280 HP.
- U Connect 5 display with a 10.1" screen, featuring GPS for seamless travel and traffic updates.
- Remote proximity keyless entry for effortless access.
- Apple CarPlay and Android Auto compatibility for enhanced connectivity.
- Advanced safety features including adaptive cruise control, lane departure warning, and collision warning.
- Luxurious touches like leather-wrapped telescopic steering wheel and ambient interior lights.



Cutting-edge technology such as Amazon Alexa voice assistant and a 360° surround-view camera elevate your drive with features that blend performance, comfort, and innovation. Ensuring every journey in your Westfalia Wave is as exhilarating as the destination.

**Important Note: EXT Chassis is not available on SRT model.*

POWER YOUR ADVENTURE 3

The Westfalia Electrical Edge

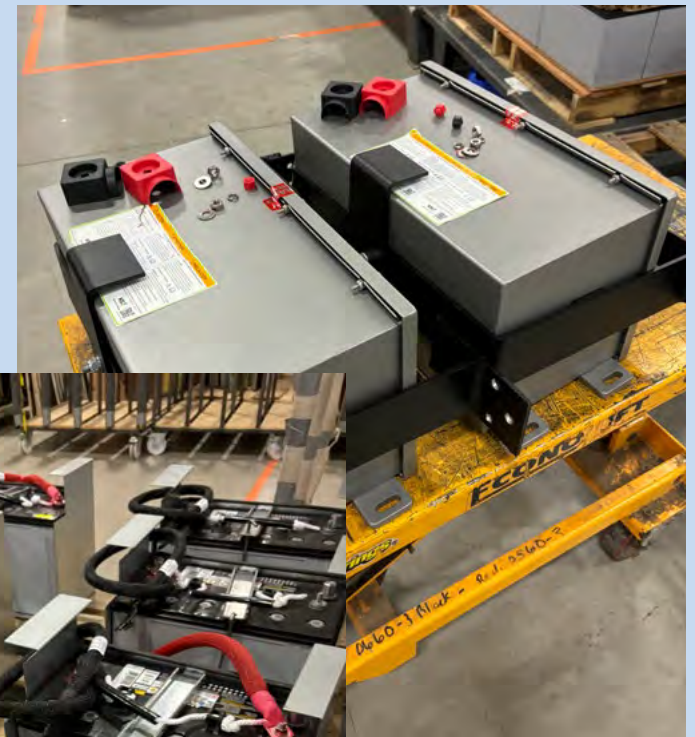
Powerful Lithium Battery System:

600 Amps of battery reserve, along with a rugged high-output underhood generator and solar panels, provide extended electrical power that exceeds most RVers' needs.



Pure Sine Wave Inverter:

Enjoy cleaner power that's safer for sensitive electronics, reducing stress and heat to your devices, allowing them to operate as designed.



POWER YOUR ADVENTURE 3



Underhood Generator:

Extremely easy to use, this system generates house battery power whenever the engine is running, recharging the 600 Amp lithium battery system at a rapid 280 Amps/hr. Its whisper-quiet operation is perfect for maintaining peace during “Quiet Hours” at campgrounds.



Solar Power:

Streamlined rooftop solar panels deliver 300 watts (200 watts for pop-top option) of power to fuel your every adventure.



TAP, SWIPE, ADVENTURE 3

Firefly at Your Fingertips

Experience the ultimate in convenience and control with Westfalia's Firefly Integration. It's like having your own tech wizard onboard, ensuring everything from tank levels to lighting is just a touch away.

Tablet-Style Central Control: Say goodbye to complicated controls. Our tablet-style interface makes operating your Westfalia a breeze. Monitor tank levels, adjust lighting, manage HVAC, and diagnose systems—all from one easy-to-use dashboard.

Mobile App: Take control to the next level with our mobile app. Monitor temperatures, control lights remotely, and ensure comfort is always within reach, whether you're inside your Westfalia or out exploring.

Ease of Operation: Big buttons, clear functions. Our system is designed for easy readability and intuitive use, giving you instant feedback on every function.

Added Convenience: Manage multiple lights and systems from a single spot. Dim lights to your liking or turn everything off with a single tap—it's that simple.

Features Include:

- Battery Control
- Tank Levels Monitoring
- Step and Awning Operation
- Climate Control
- Comprehensive System Diagnostics



PASSENGER BENCH VERSATILITY 4



Comfort Meets Convenience

Our multipurpose passenger bench is all about adaptability. Equipped with child seat restraint anchors, comfy headrests, and comfort-formed seat cushions, traveling in a Westfalia is a pleasure for everyone. The patented Westfalia seat design effortlessly converts into additional sleeping space. When the bed isn't needed, it folds away swiftly, transforming back into a cozy bench seat. Seamlessly switch between seating and sleeping configurations.

Safe Travels: Extra passengers can ride securely, thanks to our child seat restraint anchors.

Utility Sleeping Space: Easily switch from seating to sleeping, providing extra sleeping space when needed.



ULTIMATE WATER FREEDOM

5

Unrivaed Design and Capacity

HUGE Fresh Water Holding Tank Capacity:

Experience the freedom of more water when you need it, with less frequent refilling. Westfalia leads the way with an industry-leading 38-gallon fresh water tank and a 26-gallon grey water tank.

Stay Longer, Play Harder:

Our massive fresh water holding capacity ensures longer-term self-sufficiency when dry camping. Enjoy fewer visits to waste management and fresh water fill stations, letting you stay off-grid and explore more.

Smart Concealment:

Our tank is strategically hidden, seamlessly integrating into the coach's interior design.

Convenient Cassette Waste Tank:

Westfalia also features the convenience of a cassette waste tank system, making waste management easier and more efficient.



26

REAR BED FLEXIBILITY 6



Custom Comfort for Every Adventure.

Maximize sleeping space and storage with Westfalia's innovative rear bed design. Our versatile setup ensures you get the perfect balance between comfort and functionality.

Customizable Comfort: Handy removable bed platform panels allow you to configure the rear bed area to the ideal width and length for individual sleeping preferences.

4-Inch Thick High-Density Foam Mattress Cushions: Enjoy exceptional comfort with our high-density foam mattress cushions, designed for easy storage and quick adjustment of the rear space.

Efficient Use of Space: The elevated bed design provides ample storage underneath, ensuring you have plenty of room for your gear and essentials.

Adaptable Sleeping Comfort: Efficient use of available space allows for adaptable sleeping arrangements, ensuring everyone can rest easy after a day of exploring.

PACK FOR ADVENTURE 7

Intentional Storage

Stow your gear with style and ease. From steps to alcoves, sidewalls to versatile trunk space, we've designed every inch of your Westfalia for your adventurous lifestyle.

Ample Trunk Storage:

Unleash the power of organization with our versatile trunk, ensuring you have everything you need for your epic journeys. With 30 cubic feet of storage, you can pack it all!* The trunk is perfect for stashing larger items and outdoor gear like totes and mountain bikes.

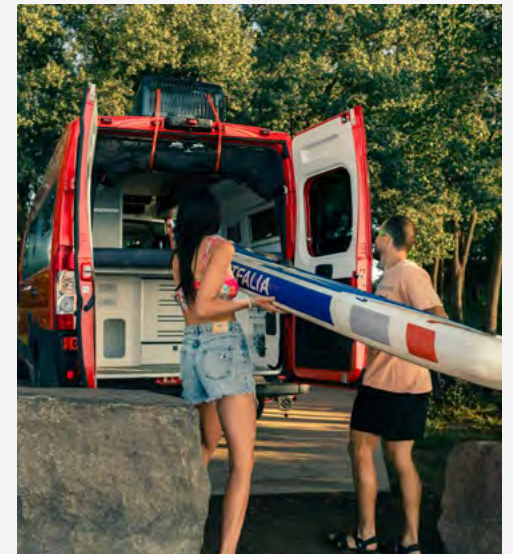
Throughway Storage:

Ideal for longer items, our throughway storage lets you easily fit inflatable kayaks and paddle boards down the center aisle of your coach.

No Limits:

Less restriction on what needs to stay behind means you can pack your Westfalia to supply for your most adventurous ambitions.

** Important Note: 15 cubic feet of storage is available on the SRT model.*



BEYOND GLASS

Smart Window Solutions

Westfalia's windows aren't just for looking through—they're for living through. Enjoy unbeatable views, breezy ventilation, and top-notch privacy with our innovative window designs.



Acrylic Awning-Style Dining

Window: Stay cool with exceptional thermal and acoustic insulation. This awning window opens wide for unobstructed views and perfect photo ops. Privacy shades and cross-ventilation bug screens come standard, keeping things comfy and private.



Bathroom Window: Shower with a view and a breeze! Our bathroom window allows for ventilation and privacy, ensuring you stay fresh and comfy.

Coach Side Door Bug Screen: Keep the bugs out and the good vibes in. Our sliding bug screen on the coach side door is perfect for letting fresh air in while containing your furry friends.

Rear Door Bug Screen with Storage Pockets: Roll up and roll out with ease. The rear doors feature a roll-up bug screen with handy storage pockets, making your adventures even more convenient.

Skylight Model: Dream big with our large 27" x 20" skylight. Double-glazed acrylic top, 60-degree opening, shade and fly screen, and gas strut operation with a positive lock. Let in the sunshine and starlight for a truly magical experience.

GO WITH THE FLOW

Smart Waste Management

Effortless, Concealed Convenience: Westfalia redefines waste management with smart, concealed solutions. Our gravity feed system and cassette toilet are designed for ease and cleanliness, keeping your van tidy and hassle-free.

Gravity Feed System: The entire waste management station hides discreetly behind a lower sidewall skirt, ensuring a sleek appearance. The grey water hose is securely stored in a locking enclosure outside the vehicle, ensuring a clean and sterile way to handle grey water waste.

Cassette Toilet: Enjoy the comfort of a permanent toilet with the flexibility of a portable one. Our cassette toilet features a removable waste tank that you can conveniently empty at public restrooms or dump stations—no more waiting in long lines.

Convenient Disposal: Empty your waste at rest stops, vault toilets, and more, reducing the need for frequent visits to dump stations. Less maintenance means more time enjoying your journey.

Versatile Use: From the start of your trip to the journey home, our system ensures you can manage waste effortlessly throughout your adventure.



A THRONE FITTING OF ADVENTURE

Elevated Bathroom Comfort

At Westfalia, we take bathroom features to the next level—because your throne deserves the best. Whether it's the marine or cassette toilet, or the fully functional wet bath, every Westfalia is designed with spaciousness and ease in mind.

Wet Bath On the Move: Indulge in the luxury of a wet bath wherever you roam. It's your personal oasis for refreshing after a day of adventure, ensuring you're always ready for what's next.

Secure Storage: Stay organized with our cleverly designed inlaid storage spaces. Safely stow toiletries and trinkets, keeping clutter at bay while ensuring everything is at your fingertips when you need it.



CULINARY DELIGHT

Gear Up for Culinary Adventures

At Westfalia, we've equipped your mobile kitchen with top-notch appliances that turn cooking into a joyous adventure.



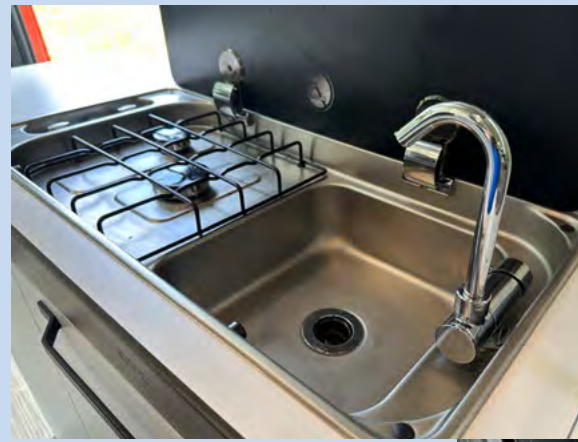
12 V, 3.2 CU FT. Compressor Vitrifrigo Fridge/Freezer:

Stay cool with our efficient compressor refrigerator that ensures your food stays fresh, no matter the outside temperature.

Microwave: Our 110V microwave with convenient cooking controls and a spacious turntable is perfect for whipping up quick meals on the go.

2 Burner LP Cooktop Sink Combo*: Recessed burners with a flush cover and built-in igniter make cooking and cleaning up a cinch, ensuring you can focus on your adventures. ** Optional Induction stove available on pre-production orders; replaces sink/stove combo.*

Push Countertop Extension: Enjoy added space with our practical push countertop extension, providing extra room for your culinary creations whenever you need it.



* Standard

* Optional



CLIMATE CONTROL CHAMPIONS



Top-Tier Comfort with Truma Appliances

When it comes to climate control, Westfalia doesn't mess around. We've teamed up with Truma, the gold standard in HVAC, to ensure you stay chill in the heat and toasty in the cold.

Combi Eco Plus – Combo Furnace/Water Heater:

Meet the heavyweight champ of comfort. This bad boy packs a punch with over 90% energy efficiency, giving you maximum warmth and hot water with minimal noise.

- Energy Efficiency: Flex those eco-muscles with over 90% efficiency.
- Stainless Steel Water Tank: Built to last, just like your adventures.
- Space-Saving: Two-in-one magic to keep your van clutter-free.
- Silent Operator: So quiet, you'll forget it's even on.



Aventa Eco - A/C: Say hello to the coolest cat on the block. The Aventa Eco keeps your space perfectly balanced and blissfully quiet, after all that adventure you need a good night's sleep. 110 V, 13,500 BTU roof mount on Pop Top Model.*

Cool & Quiet: Choose your chill level—low, medium, or high. Chill vibes only.

Automatic Modes: Cooling, dehumidification, night mode, and more.



**Note: Pop-Top model features 110 V, 13,500 BTU roof mount A/C.*

OUTDOOR VIBES

Enhance Your Outdoor Experience

Explore the great outdoors with Westfalia's array of smart exterior features, designed for comfort and convenience wherever your journey takes you.

Power Entry Coach Side Doorstep:

Step into ease and safety with our Thule premium step system. Featuring wide, non-slip treads and automatic deployment, it's perfect for both you and your furry companions.

Roll-Up Awning: Chill out in the shade at the push of a button. Our Firefly-powered roll-up awning is easy to operate and perfect for creating your own outdoor oasis.

Outdoor Shower: Rinse off muddy paws or sandy gear with our convenient outdoor shower. Perfect for keeping your adventures clean and fresh.

Propane Tanks: Stay fueled with our 25L/30LB LP tank featuring an exterior quick connect. Whether you're cooking up a storm or powering your gear, this propane tank has you covered.



YOUR ROAD TO PEACE OF MIND

Dealer Support:

For dealer inquiries, reach out to dealersupport@roadtrekinc.com. For retail support, contact retailsupport@roadtrekinc.com.

Welcome to the Westfalia family, where support isn't just a service—it's a commitment. With over 40 years of combined experience, our Customer Care team are your trusted guides, ensuring you receive best-in-class customer service that's second to none.



2
YEAR
UNLIMITED
MILEAGE
MOTORHOME
WARRANTY

MODEL

Enjoy 2 years of comprehensive coverage with no mileage limit. Our warranty includes everything from appliances to essential components, ensuring your peace of mind on every adventure.

CHASSIS

Your Westfalia comes with a robust Promaster Chassis Warranty: a 5-year/60,000-mile or 100,000-kilometer gas powertrain limited warranty that covers repairs on all major components. Additionally, a 3-year/36,000-mile or 60,000-kilometer limited warranty provides bumper-to-bumper coverage, ensuring every part of your vehicle is protected.

ROAD

Drive confidently with 2 years of free roadside assistance, including emergency roadside help, towing, jump starts, emergency fuel delivery, tire assistance, and locksmith services.

EMBRACE THE WESTFALIA SPIRIT

Building Westfalia Together - Our Pack

Welcome to the vibrant world of van life, where the journey is your home and your neighbors are your family. Westfalia embodies a culture of adventure and camaraderie, where every road leads to new friendships and shared experiences.

Steeped in a rich cultural heritage across North America, Westfalia embodies a legacy of exploration and community. Today, we're reigniting this tradition by forging a new Westfalia Community— Our Pack, a place where every journey feels like coming home.

What becoming a Westfalia owner offers:

Nomadic Connections: Join a pack of like-minded explorers who understand the thrill of the open road and the joy of discovering new places.

Shared Adventures: From coast to coast, Westfalia owners come together at gatherings and events that celebrate the spirit of van life.

Belonging Everywhere: With Westfalia, wherever you roam, you belong. Our pack is your home base, offering support, camaraderie, and endless opportunities for adventure.

Live the Westfalia Way

Join the nomads and discover the freedom of van life with a pack that feels like home, no matter where you wander.



The background features a hand-drawn illustration of a desert landscape. In the upper half, there are several mesas or buttes of varying heights and widths, rendered with simple lines and shading. The ground is depicted with horizontal lines suggesting a flat, arid plain. In the lower half, there are several cacti of different shapes and sizes, including a tall saguaro cactus on the right and several smaller cholla cacti scattered across the foreground. The overall style is minimalist and sketchy, using a limited color palette of light beige and dark brown on a dark olive green background.

UNDER THE HOOD

Dive into the specifics of each model.

POP TOP & PEACE OUT



WAVE POP TOP



LENGTH
20' 9"



HEIGHT
9'5"



GVWR
9350 LBS. (4241 KG.)



CHASSIS
RAM PROMASTER
3500 159" EXT



SLEEPS
6



STORAGE
30 CU. FEET

LAY BACK & LOOK UP



WAVE SKYLIGHT



LENGTH
20' 9"



HEIGHT
9'5"



GVWR
9350 LBS. (4241 KG.)



CHASSIS
RAM PROMASTER
3500 159" EXT



SLEEPS
4



STORAGE
30 CU. FEET

WHAT'S INSIDE THE WAVE POP TOP & SKYLIGHT

Modern Conveniences Push Practicality To Its Limits

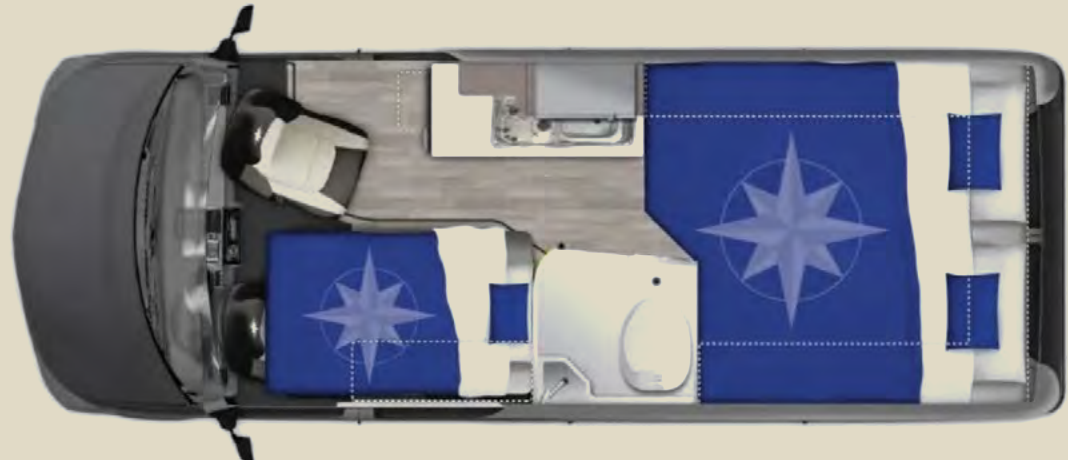
159" Extended 3500 Series HD RAM

Standard Features:

- Travel capacity for 4 w/ 2 Child Seat Anchors
- Sleeping capacity for up to 6
- Patented folding front sofa bed combo
- 30 cubic ft of trunk storage
- Truma Combi furnace/water heater system
- Cassette toilet in the wet bath
- Propane cooktop
- Vitrifrigo Refrigerator
- Microwave Oven
- Hidden pull-out countertop extension
- 600-amp-hours of lithium batteries
- 3,000-watt inverter
- Firefly tablet-style multiplex system



Sunny Days



Dreamy Nights

COMPACT & CRUISE



WAVE SRT



LENGTH
19' 7"



HEIGHT
9' 5"



GVWR
9350 LBS. (4241 KG.)



CHASSIS
RAM PROMASTER
3500 159"



SLEEPS
4



STORAGE
15 CU. FEET

WHAT'S INSIDE THE WAVE SRT

Modern Conveniences Push Practicality To Its Limits

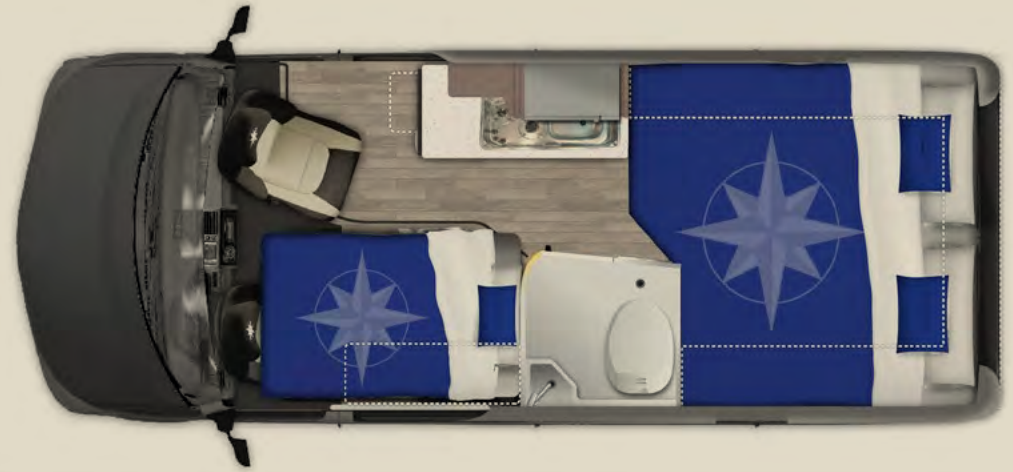
159" 3500 Series HD RAM

Standard Features:

- Travel capacity for 4 w/ 2 Child Seat Anchors
- Sleeping capacity for up to 4
- Patented folding front sofa bed combo
- 15 cubic ft of trunk storage
- Truma Combi furnace/water heater system
- Cassette toilet in the wet bath
- Propane cooktop
- Vitrifrigo Refrigerator
- Microwave Oven
- Hidden pull-out countertop extension
- 600-amp-hours of lithium batteries
- 3,000-watt inverter
- Firefly tablet-style multiplex system



Sunny Days



Dreamy Nights



COLOR YOUR JOURNEY

Full Body Exterior Paints

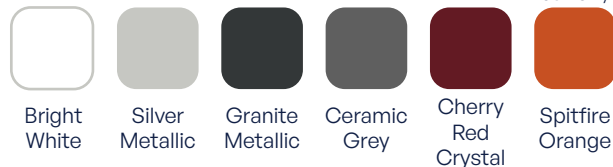
Choose from Westfalia's vibrant palette of colors to personalize your adventure. Whether you prefer the timeless elegance of Bright White, the sleek modernity of Silver Metallic, or the bold statement of Cherry Red Crystal, each color is crafted to reflect your unique style and spirit of exploration.

Westfalia models feature custom full body exteriors where body panels, bumpers, awnings, and A/C covers are meticulously clear coat painted to match the overall appearance of the van. This attention to detail creates a vibrant, easy-to-clean look that transforms the van into a standout travel vehicle, perfect for making a statement wherever you go.

Optional Black Accent Package:

Enhance your Westfalia with the optional Black Accent Package, designed to add a touch of rugged sophistication. Featuring black grille, rims, and body trim, this package transforms your van into a bold statement of adventure. It's the perfect complement to your selected paint colour, elevating your style on and off the road.

Exterior Paint Options



Standard



Black Accent Package

Optional Black Accent Package.

The optional Black Accent Package includes grille, rims, and body trim. Not available with exterior accent paint options. Replaces full body painted moldings.

Euro Chic: Westfalia's Unique Decor

Step into the Westfalia Wave and experience a new standard in motorhome decor, distinctly different from the typical American coach. The Euro styling of the Westfalia Wave brings modernity, warmth, and functionality together in a way that sets it apart.

Our interior features sleek lines, monochromatic graphite accents, and pristine white seat covers, creating a sophisticated and contemporary look. The Westfalia Wave boasts warm wood tones, beautifully crafted joints, and high-quality clasps. Every drawer glides effortlessly, and every surface is designed with both form and function in mind.

The interior is not just beautiful but also inviting and practical, ensuring you feel right at home, no matter where your adventures take you.

Embrace the unique Euro styling of the Westfalia Wave – a modern, cozy, and functional space that reflects your adventurous spirit and love for good design.

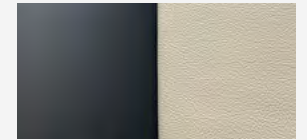


Décor

Timber Wolf Grey



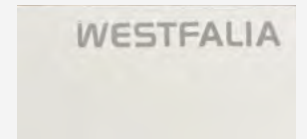
Bedding Upholstery



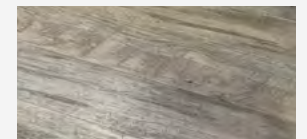
Seating Leatherette



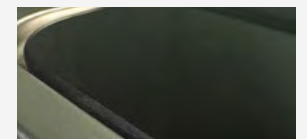
Cortona Grain Cabinetry



Cabinetry / Counter top



Flooring



Kitchenette

MASTER SPECS

Model	Wave Skylight	Wave Pop Top	Wave SRT
Capacity			
Travel Capacity	4 w/ 2 Child Seat Anchors	4 w/ 2 Child Seat Anchors	4 w/ 2 Child Seat Anchors
Sleeping Capacity	4	6	4
Chassis			
Base Model	RAM Promaster 3500 159" EXT Van w/9 spd transmission		RAM Promaster 3500 159" Van w/9 spd transmission
Engine	3.6L Gas, V6	3.6L Gas, V6	3.6L Gas, V6
Fuel Type	Gasoline	Gasoline	Gasoline
Fuel Capacity	90.8 L/24 U.S. GAL.	90.8 L/24 U.S. GAL.	90.8 L/24 U.S. GAL.
Wheelbase	159" (4,039 mm)	159" (4,039 mm)	159" (4,039 mm)
Advanced Safety	Park Assist, Adaptive Cruise Control w/Stop & Go, Driving Assist, 360 Surround View Camera, Lane Departure Warning Plus, Blind Spot and Cross Path Detection, Collision Warning, Power Heated Mirrors, Remote Start, Tire pressure Monitoring,		
HD Radio	Uconnect 5, 10.1" Display, Voice Command, Apple Car Play, Android Auto, Wireless Charging Pad, 4G LTE WI-FI Hotspot,		
Gross Vehicle Weight Rating	9350 lbs. (4241 kg.)	9350 lbs. (4241 kg.)	9350 lbs. (4241 kg.)
Cargo Carrying Capacity (CCC) CDN	1243 lbs. (564 kg.)	992 lbs. (450 kg.)	1243 lbs. (564 kg.)
Occupant & Cargo Carrying Capacity (OCCC) US	2174 lbs. (986 KG.)	1922 lbs. (872 KG.)	1629 lbs. (739 KG.)
Gross Combined Weight Rating	11500 lbs. (5,227 kg.)	11500 lbs. (5,227 kg.)	11500 lbs. (5,227 kg.)
Dry Weight	7720 lbs. (3,175 kg.)	7920 lbs. (3,311 kg.)	7545 lbs. (3,422 kg.)
Hitch Weight Rating	3500 lbs. (1,587 kg.)	3500 lbs. (1,587 kg.)	3500 lbs. (1,587 kg.)
Tongue Weight Rating	300 lbs. (136 kg.)	300 lbs. (136 kg.)	300 lbs. (136 kg.)
Towing Capacity (Max)	1823 lbs (827 kg)	1780 lbs (807 kg)	1823 lbs (827 kg)
Exterior Length	20' 9" (6,325 mm)	20' 9" (6,325 mm)	19' 7" (6,325 mm)
Exterior Width (without mirrors)	6' 11" (2,108 mm)	6' 11" (2,108 mm)	6' 11" (2,108 mm)
Exterior Height (with roof A/C)	9' 5" (2,870 mm)	9' 5" (2,870 mm)	9' 5" (2,870 mm)
Interior Standing Height	6' 2" (1,880 mm)	6' 2" (1,880 mm)	6' 2" (1,880 mm)

Electrical			
Coach Control System	Firefly Touch Control w/ Bluetooth & App	Firefly Touch Control w/ Bluetooth & App	Firefly Touch Control w/ Bluetooth & App
Batteries	600 AMP Lithium	600 AMP Lithium	600 AMP Lithium
Under-Hood Generator	Included	Included	Included
Inverter	3000-Watt Power Inverter	3000-Watt Power Inverter	3000-Watt Power Inverter
Solar	300 W	200 W	300 W
External Power Connection	110 V/ 30 AMP with detachable power cord	110 V/ 30 AMP with detachable power cord	110 V/ 30 AMP with detachable power cord
Detectors	Smoke, Propane and CO	Smoke, Propane and CO	Smoke, Propane and CO
Holding Tanks			
Fresh Water Capacity	145 L/38.3 U.S. GAL.	145 L/38.3 U.S. GAL.	145 L/38.3 U.S. GAL.
Black Water Capacity	18 L/4.76 U.S. GAL.	18 L/4.76 U.S. GAL.	18 L/4.76 U.S. GAL.
Gray Water Capacity	99L/26.4 U.S. GAL.	99L/26.4 U.S. GAL.	99L/26.4 U.S. GAL.
Sewage Disposal System	Cassette Toilet 4.76 g	Cassette Toilet 4.76 g	Cassette Toilet 4.76 g
HVAC			
Water System	Truma LP Combi, Eco Plus 14,300 BTU/h + 1.7 kW with 110v		
Furnace			
A/C	Truma Aventa Eco Roof Mount Air Conditioning, 13,500 BTU	110 V, 13,500 BTU roof mount	Truma Aventa Eco Roof Mount Air Conditioning, 13,500 BTU
Propane	25L/30LB LP Tank w/ Exterior Quick Connect	25L/30LB LP Tank w/ Exterior Quick Connect	25L/30LB LP Tank w/ Exterior Quick Connect
Kitchen			
Dining	Front	Front	Front
Interior Galley Aisle Width	16 3/4" - 23 3/4"	16 3/4" - 23 3/4"	16 3/4" - 23 3/4"
Galley	Solid surface countertop with pop-out extension, combo stainless steel 2 burner/sink with cover.		
Adjustable Table	Adjustable Swivel Table	Adjustable Swivel Table	Adjustable Swivel Table
Refrigerator	12 V, 3.2 CU FT. Compressor	12 V, 3.2 CU FT. Compressor	12 V, 3.2 CU FT. Compressor
Microwave	110 V, 20 L/0.7 CU FT., 700W	110 V, 20 L/0.7 CU FT., 700W	110 V, 20 L/0.7 CU FT., 700W
Stove- Propane (Standard)	Two burners recessed with flush cover and built-in igniter	Two burners recessed with flush cover and built-in igniter	Two burners recessed with flush cover and built-in igniter

Stove- Induction (Optional)	Single Induction Stove, Replaces Sink/Stove Combo	Single Induction Stove, Replaces Sink/Stove Combo	Single Induction Stove, Replaces Sink/Stove Combo
Bathroom	Wet bath with cassette toilet, sink and shower	Wet bath with cassette toilet, sink and shower	Wet bath with cassette toilet, sink and shower
Outdoor Shower	Included	Included	Included
Sleeping			
Rear Sleeping KING (wxl)	71" x 69" or 80" (1803.4mm x 1752mm or 2032mm)Asymmetrical w/ opt Centre Aisle Bed Cushion Extension	71" x 69" or 80" (1803.4mm x 1752mm or 2032mm)Asymmetrical w/ opt Centre Aisle Bed Cushion Extension	72" x 55" or 66" (1803.4mm x 1387mm or 1667mm)Asymmetrical w/ opt Centre Aisle Bed Cushion Extension
Rear Sleeping QUEEN (wxl)	Multiple Bed Configurations	Multiple Bed Configurations	Multiple Bed Configurations
Front Combination Bench/Bed	39"x69" (990mm x 1752mm)	39"x69" (990mm x 1752mm)	39"x69" (990mm x 1752mm)
Pop Top Mattress	N/A	52"x79" (1321mm x 2007mm)	N/A
Pop Top Area	N/A	Ladder, Adjustable brightness LED light strip, 2 USB Ports, Zipper Window/ Screens & Venting Skylight	N/A
Storage			
Cabinets/Drawers	17	17	17
Interior Trunk Dimensions	61.7" L x 28.2" D x 29.8" H (1567.18mm x 716.28mm x 756.92) 30 Cu Feet	61.7" L x 28.2" D x 29.8" H (1567.18mm x 716.28mm x 756.92) 30 Cu Feet	61.7" L x 14.2" D x 29.8" H (1567.18mm x 351.28mm x 756.92) 15 Cu Feet
Media			
Entertainment	USB charge ports for your devices	USB charge ports for your devices	USB charge ports for your devices
Exterior			
Steps	Power step at coach entry	Power step at coach entry	Power step at coach entry
Interior Windows	10	10	10
Skylight	1 - 17"x25" (431mm x 635mm)	N/A	1 - 17"x25" (431mm x 635mm)
Awning	13' Power	13' Power	13' Power
Screen Package	Heavy-duty multi-function bug screens for rear and sliding screen passenger side door		
Warranty			
RV Warranty	Two (2) year comprehensive, unlimited mileage warranty. Please contact your nearest Roadtrek dealer for complete details.		
Chassis Warranty	5-year/60,000-mile or 100,000-kilometer Gas Powertrain Limited Warranty covering the cost of repairs on all covered powertrain components – engine, transmission and drive system for most new Ram vehicles. 3-year/36,000-mile or 60,000 kilometer Limited Warranty, provides bumper-to-bumper coverage of your vehicle, from the body to the electrical system. Refer to chassis manufacturer's website for complete details.		



[@westfalia.americas](https://www.instagram.com/westfalia.americas)
[@westfalia.americas](https://www.facebook.com/westfalia.americas)
[YouTube](https://www.youtube.com/westfalia.americas)
[TikTok](https://www.tiktok.com/westfalia.americas)
www.westfalia.americas.com

Important Information

Westfalia is a brand of Roadtrek Inc. Roadtrek Inc. reserves the right to make changes at any time, without notice, in colors, materials, equipment, specifications and models. This booklet contains information and photos that may represent 2024 product information. This information is intended as a guide only. Please visit www.westfalia-americas.com for a complete list of specifications and options. Some pictures may include optional equipment. Some equipment may not be available on all models. Printed in Canada, October 2024.

