

**DISCOVER  
THE LANCE  
DIFFERENCE**  
LANCECAMPER.COM



**Lance**



**DISCOVER  
THE LANCE  
DIFFERENCE**  
LANCERCAMPER.COM



# LEGACY. QUALITY. INNOVATION.

More than five decades after the original Lance camper made its debut, the product may have evolved but our goal remains the same: to continue building the world's best truck campers, ultra-light travel trailers and toy haulers on the market.

The lessons we have learned along this journey stand testament to our commitment to the recreational vehicle lifestyle. When you step into a Lance product the dedication to this difference is clear. You can feel a heritage of pride in workmanship.

Our Lancaster, California manufacturing plant is staffed with professionals who are devoted to staying true to our name. Working hard to adapt our tried and true practices of ultra-lightweight design and extremely durable construction coupled with the most advanced materials and processes to build your next RV.

We welcome you to join the Lance family and begin making memories today.

Discover The Lance Difference!



# LEGACY. QUALITY. INNOVATION.

More than five decades after the original Lance camper made its debut, the product may have evolved but our goal remains the same: to continue building the world's best truck campers, ultra-light travel trailers and toy haulers on the market.

The lessons we have learned along this journey stand testament to our commitment to the recreational vehicle lifestyle. When you step into a Lance product the dedication to this difference is clear. You can feel a heritage of pride in workmanship.

Our Lancaster, California manufacturing plant is staffed with professionals who are devoted to staying true to our name. Working hard to adapt our tried and true practices of ultra-lightweight design and extremely durable construction coupled with the most advanced materials and processes to build your next RV.

We welcome you to join the Lance family and begin making memories today.

Discover The Lance Difference!





LANCE, THE  
**ULTIMATE**  
BASE CAMP

LANCE, THE  
**ULTIMATE**  
BASE CAMP



ALL NEW MODEL 1062



ALL NEW MODEL 1062





Model 1062 shown in Arrowhead

**ENTERTAIN!**



Model 1062 shown in Arrowhead

**ENTERTAIN!**



Entertainment Center with Bluetooth Audio System

**BE ENTERTAINED!**



Model 1172 shown in Mohave Dunes



Model 995 shown in Palm Springs



Entertainment Center with Bluetooth Audio System

**BE ENTERTAINED!**



Model 1172 shown in Mohave Dunes



Model 995 shown in Palm Springs

# SPECIFICATIONS+STANDARDS+OPTIONS

	SHORT BED				LONG BED				
	650	825	855S	865	850	975	995	1062	1172
Floor Length	6' 10"	8' 6"	8' 11"	8' 7"	8' 11"	10' 4"	9' 11"	10' 11"	11' 11"
Overall Length	15' 6"	16' 3"	18'	16' 5"	17' 7"	19' 5"	19'	20'	20' 4"
Overall Length w/Opt. ultraDECK+ Bumper	N/A	N/A	N/A	N/A	N/A	19' 10"	19' 5"	20' 5"	N/A
Exterior Height (w/Opt. 11M A/C)	9' 2"	8'	8' 9"	8'	8' 6"	9'	9'	9'	9'
Width (Exterior)	86"	86"	96"	86"	96"	96"	96"	96"	96"
Height (Interior)	81"	77"	81"	77"	76"	79"	79"	79"	80"
Cabover Height	3' 2"	2' 9"	3' 5"	2' 9"	3' 2"	3' 5"	3' 5"	3' 5"	3' 8"
Dry Weight w/Std. Equipment	1639	1837	2844	2011	2445	3330	3290	3596	3923
Wet Weight w/Std. Equipment	1842	2155	3178	2329	2779	3793	3753	4056	4377
CG Front	21"	32"	38"	34"	34"	49"	45"	48"	60"
CG Rear	57"	46"	40"	44"	62"	47"	51"	48"	36"
Fresh Water, Gallons	22	30	30	30	30	45	45	45	42
Gray Water, Gallons	15	25	20	14	20	30	30	27	35
Black Water, Gallons	16	14	25	13	18	26	28	22	35
Propane Tank (#/Gal) (1 Gauge Only)	1/5	1/5	2/5	1/5	2/5	2/5	2/5	2/5	2/7
Sleeping Capacity, Min/Opt Max.	3/3	4/5	4/5	5/5	5/5	4/4	4/4	4/4	5/6



Model 650



Model 825



Model 855S

	SHORT BED				LONG BED				
	650	825	855S	865	850	975	995	1062	1172
<b>Exterior</b>									
Laminated Fiberglass Bonded Exterior W/Azdel Substrate	•	•	•	•	•	•	•	•	•
Lamalux 1500 Fiberglass	•	•	•	•	•	•	•	•	•
Lamalux 4000 Fiberglass (High Gloss)			•		•	•	•	•	•
Radius Wrapped Fiberglass Cab-Over Nose		•		•					
One-Piece Formed TPO Cab-Over Front Cap	•	•	•	•	•	•	•	•	•
LanceLock Trusses, Wings and Siderails									•
LanceLock Lite-Ply Wings and Siderails	•	•	•	•	•				
LanceLock II Basement Truss, Wing and Siderails					•	•	•		
Acme Screw Camper Jacks	•	•	•						
Ball Screw Camper Jacks	0	0	0	•					
Electric Remote Ball Screw Camper Jacks	0	0	•	0	•	•	•	•	•
Swing-Out Jack Brackets			0		0	0	0	0	•
Aluminum Rear Bumper			•		•	•	•		
Ultra Deck Plus Bumper					0	0	0		
Deluxe Bumper Trim			•		•	•	•		
Fold-Over Step			•		•	•	•		
4 Step Scissor Step	0				0				
Double Step		•	•						•
Full View Dual Pane Tinted Windows		•	•	•	•	•	•	•	•
Radius Acrylic Tinted Thermopane Euro Windows	•								
Pass-Through Window (Removable)		0	0	0	0	0			•
Ladder and Maggie Rack - Anodized		0	•	0	•	•	•	•	•
Phat Ladder - Anodized		0	•	0	•	•	•	•	•
Folding Sidewall Mounted Ladder									•
Roof Rack System		0	0	0	0	0	0	0	0
LED Tail Lights	•	•	•	•	•	•	•	•	•
LED Back-Up Lights	•	•	•	•	•	•	•	•	•
LED Running Lights	•	•	•	•	•	•	•	•	•
LED License Plate Light W/Holder	•	•	•	•	•	•	•	•	•
Radius Cornered Storage Compartment Doors	•	•	•	•	•	•	•	•	•
Radius Entry Door W/Window	•	•	•	•	•	•	•	•	•
Safety View Window	0	0	0						

	SHORT BED				LONG BED				
	650	825	855S	865	850	975	995	1062	1172
Keyless Entry W/Key Fob	0	0	0	0	0	0	0	0	0
Egress Window in Cab-Over	•	•	•	•	•	•	•	•	•
Roof Vent in Cab-Over	•	•	•	•					
Exit Vent in Cab-Over									
Heki Skylight Vent in Cab-Over					0	•	•	•	•
Skylight - Dual Pane Over Galley					•	•	•	•	•
Exterior Wash Station	•	•	•	•	•	•	•	•	•
Exterior Propane Connection	0	0	0	0	0	0	0	0	0
Awning Rear Roll-Out	0	0	0	0	0				
Electric Rear Awning 7'3" W/LED Lighting						0	0	0	
Electric CS Awning 10'-4" W/LED Lighting	0	0	0	0	0				
Electric CS Awning 12'-0" W/LED Lighting						0			
Electric CS Awning 14'-0" W/LED Lighting								0	
Awning Slide-Out Cover			0		0	0	0/2	0/2	
Swing-Out Entry Assist Handle	0	0	0	0	0	0	0	0	0
<b>Construction/Insulation</b>									
One-Piece TPO Roof	•	•	•	•	•	•	•	•	•
Laminated, Insulated Floor, Cab-Over Bed and Roof	•	•	•	•	•	•	•	•	•
Block Foam Insulation Throughout	•	•	•	•	•	•	•	•	•
Aluminum Framed Walls, Floor, Cab-Over Bed & Roof	•	•	•	•	•	•	•	•	•
Azdel Interior Walls	•	•	•	•	•	•	•	•	•
All Weather Package	0	0	0	0	0	0	0	0	0
-Insulated Battery and LP Compartments									
-Insulated Hatch Covers									
-Water Heater Bypass and Winterizing Valve									
-Insulated Bed Pad									
<b>Interior/Decor</b>									
Interior - Palm Springs	0	0	0	0	0	0	0	0	0
Interior - Arrowhead	0	0	0	0	0	0	0	0	0
Interior - Mohave Dunes	0	0	0	0	0	0	0	0	0

	SHORT BED				LONG BED				
	650	825	855S	865	850	975	995	1062	1172
Hardwood Framed Flat Panel Cabinet Doors W/Glazing	•	•	•	•	•	•	•	•	•
Hardwood Raised Panel O'Head Cabinet Doors W/Glazing					•	•	•	•	•
Fingertip Positive Catch Cabinet Hardware	•	•	•	•	•	•	•	•	•
Self-Closing Drawer Guides	•	•	•	•	•	•	•	•	•
Lite-Ply Cabinet Construction	•	•	•	•	•	•	•	•	•
Valances W/Lambrequins					•	•	•	•	•
Mini-Blinds in Galley			•	•	•	•	•	•	•
Mini-Blinds in Cab-Over			•	•	•	•	•	•	•
Day/Night Shades W/Black-Out on Cab-Over Windows									•
Mini-Blinds in Dinette			•	•	•	•	•	•	•
Day/Night Shades in Dinette									•
Combo Screen/Shade on Windows	•								
Day/Nite Shades in Cab-Over/Dinette			0		0	0	0	0	0
Entry Door Pull Shade	0	0	0	0	0	0	0	0	0
Removable Carpet Kit	0	0	0	0	0	0	0	0	0
Hidden Trash Can Compartment								•	•
Wall Clock	•	•	•	•	•	•	•	•	•
Key Hanger	•	•	•	•	•	•	•	•	•
Pull Out Storage Tray									•
<b>Galley/Appliances &amp; Equipment</b>									
2-Burner Range	•	•	•						
3-Burner High Output Range W/Oven and Cover - 16" Oven			•	0	•	•	•	•	•
Microwave Convection									0
Microwave Oven	0	0	0	0	0	0	0	0	0
Refrigerator (Cu Ft) 3-Way	3	3	5	3	5	6	6	6	6
Upgraded Refrigerator Door Panels	•	•	•	•	•	•	•	•	•
Furnace BTU	12M	12M	20M	12M	20M	20M	20M	20M	20M
Range Hood W/Light and Fan	•	•	•	•	•	•	•	•	•
Laminate Galley Top W/Edge Band	•	•	•						

# SPECIFICATIONS+STANDARDS+OPTIONS

	SHORT BED				LONG BED				
	650	825	855S	865	850	975	995	1062	1172
Floor Length	6' 10"	8' 6"	8' 11"	8' 7"	8' 11"	10' 4"	9' 11"	10' 11"	11' 11"
Overall Length	15' 6"	16' 3"	18'	16' 5"	17' 7"	19' 5"	19'	20'	20' 4"
Overall Length w/Opt. ultraDECK+ Bumper	N/A	N/A	N/A	N/A	N/A	19' 10"	19' 5"	20' 5"	N/A
Exterior Height (w/Opt. 11M A/C)	9' 2"	8'	8' 9"	8'	8' 6"	9'	9'	9'	9'
Width (Exterior)	86"	86"	96"	86"	96"	96"	96"	96"	96"
Height (Interior)	81"	77"	81"	77"	76"	79"	79"	79"	80"
Cabover Height	3' 2"	2' 9"	3' 5"	2' 9"	3' 2"	3' 5"	3' 5"	3' 5"	3' 8"
Dry Weight w/Std. Equipment	1639	1837	2844	2011	2445	3330	3290	3596	3923
Wet Weight w/Std. Equipment	1842	2155	3178	2329	2779	3793	3753	4056	4377
CG Front	21"	32"	38"	34"	34"	49"	45"	48"	60"
CG Rear	57"	46"	40"	44"	62"	47"	51"	48"	36"
Fresh Water, Gallons	22	30	30	30	30	45	45	45	42
Gray Water, Gallons	15	25	20	14	20	30	30	27	35
Black Water, Gallons	16	14	25	13	18	26	28	22	35
Propane Tank (#/Gal) (1 Gauge Only)	1/5	1/5	2/5	1/5	2/5	2/5	2/5	2/5	2/7
Sleeping Capacity, Min/Opt Max.	3/3	4/5	4/5	5/5	5/5	4/4	4/4	4/4	5/6



Model 650



Model 825



Model 855S

Exterior	SHORT BED				LONG BED				
	650	825	855S	865	850	975	995	1062	1172
Laminated Fiberglass Bonded Exterior W/Azdel Substrate	•	•	•	•	•	•	•	•	•
Lamalux 1500 Fiberglass	•	•	•	•	•	•	•	•	•
Lamalux 4000 Fiberglass (High Gloss)			•	•	•	•	•	•	•
Radius Wrapped Fiberglass Cab-Over Nose		•	•	•	•	•	•	•	•
One-Piece Formed TPO Cab-Over Front Cap	•	•	•	•	•	•	•	•	•
LanceLock Trusses, Wings and Siderails									•
LanceLock Lite-Ply Wings and Siderails	•	•	•	•	•	•	•	•	•
LanceLock II Basement Truss, Wing and Siderails					•	•	•	•	•
Acme Screw Camper Jacks	•	•	•	•	•	•	•	•	•
Ball Screw Camper Jacks	0	0	0	•	•	•	•	•	•
Electric Remote Ball Screw Camper Jacks	0	0	•	0	•	•	•	•	•
Swing-Out Jack Brackets			0	0	0	0	0	•	•
Aluminum Rear Bumper			•	•	•	•	•	•	•
Ultra Deck Plus Bumper					0	0	0	•	•
Deluxe Bumper Trim			•	•	•	•	•	•	•
Fold-Over Step			•	•	•	•	•	•	•
4 Step Scissor Step	0			0					
Double Step		•	•	•	•	•	•	•	•
Full View Dual Pane Tinted Windows		•	•	•	•	•	•	•	•
Radius Acrylic Tinted Thermopane Euro Windows	•								
Pass-Through Window (Removable)		0	0	0	0	0			•
Ladder and Maggie Rack - Anodized		0	•	0	•	•	•	•	•
Phat Ladder - Anodized		0	•	0	•	•	•	•	•
Folding Sidewall Mounted Ladder									•
Roof Rack System		0	0	0	0	0	0	0	0
LED Tail Lights	•	•	•	•	•	•	•	•	•
LED Back-Up Lights	•	•	•	•	•	•	•	•	•
LED Running Lights	•	•	•	•	•	•	•	•	•
LED License Plate Light W/Holder	•	•	•	•	•	•	•	•	•
Radius Cornered Storage Compartment Doors	•	•	•	•	•	•	•	•	•
Radius Entry Door W/Window	•	•	•	•	•	•	•	•	•
Safety View Window		0	0	0					

	SHORT BED				LONG BED				
	650	825	855S	865	850	975	995	1062	1172
Keyless Entry W/Key Fob	0	0	0	0	0	0	0	0	0
Egress Window in Cab-Over	•	•	•	•	•	•	•	•	•
Roof Vent in Cab-Over	•	•	•	•					
Exit Vent in Cab-Over					•				
Heki Skylight Vent in Cab-Over					•	•	•	•	•
Skylight - Dual Pane Over Galley					•	•	•	•	•
Exterior Wash Station	•	•	•	•	•	•	•	•	•
Exterior Propane Connection	0	0	0	0	0	0	0	0	0
Awning Rear Roll-Out	0	0	0	0	0				
Electric Rear Awning 7'3" W/LED Lighting						0	0	0	
Electric CS Awning 10'-4" W/LED Lighting	0	0	0	0	0				
Electric CS Awning 12'-0" W/LED Lighting						0			
Electric CS Awning 14'-0" W/LED Lighting									0
Awning Slide-Out Cover			0		0	0	0/2	0/2	
Swing-Out Entry Assist Handle	0	0	0	0	0	0	0	0	0
<b>Construction/Insulation</b>									
One-Piece TPO Roof	•	•	•	•	•	•	•	•	•
Laminated, Insulated Floor, Cab-Over Bed and Roof	•	•	•	•	•	•	•	•	•
Block Foam Insulation Throughout	•	•	•	•	•	•	•	•	•
Aluminum Framed Walls, Floor, Cab-Over Bed & Roof	•	•	•	•	•	•	•	•	•
Azdel Interior Walls	•	•	•	•	•	•	•	•	•
All Weather Package		0	0	0	0	0	0	0	0
-Insulated Battery and LP Compartments									
-Insulated Hatch Covers									
-Water Heater Bypass and Winterizing Valve									
-Insulated Bed Pad									
<b>Interior/Decor</b>									
Interior - Palm Springs	0	0	0	0	0	0	0	0	0
Interior - Arrowhead	0	0	0	0	0	0	0	0	0
Interior - Mohave Dunes	0	0	0	0	0	0	0	0	0

	SHORT BED				LONG BED				
	650	825	855S	865	850	975	995	1062	1172
Hardwood Framed Flat Panel Cabinet Doors W/Glazing	•	•	•	•	•	•	•	•	•
Hardwood Raised Panel O'Head Cabinet Doors W/Glazing			•	•	•	•	•	•	•
Fingertip Positive Catch Cabinet Hardware	•	•	•	•	•	•	•	•	•
Self-Closing Drawer Guides	•	•	•	•	•	•	•	•	•
Lite-Ply Cabinet Construction	•	•	•	•	•	•	•	•	•
Valances W/Lambrequins		•	•	•	•	•	•	•	•
Mini-Blinds in Galley		•	•	•	•	•	•	•	•
Mini-Blinds in Cab-Over		•	•	•	•	•	•	•	•
Day/Night Shades W/Black-Out on Cab-Over Windows									•
Mini-Blinds in Dinette		•	•	•	•	•	•	•	•
Day/Night Shades in Dinette									•
Combo Screen/Shade on Windows	•								
Day/Nite Shades in Cab-Over/Dinette		0			0	0	0	0	0
Entry Door Pull Shade	0	0	0	0	0	0	0	0	0
Removable Carpet Kit	0	0	0	0	0	0	0	0	0
Hidden Trash Can Compartment					•	•			
Wall Clock	•	•	•	•	•	•	•	•	•
Key Hanger	•	•	•	•	•	•	•	•	•
Pull Out Storage Tray									•
<b>Galley/Appliances &amp; Equipment</b>									
2-Burner Range		•	•	•					
3-Burner High Output Range W/Oven and Cover - 16" Oven			•	0	•	•	•	•	•
Microwave Convection									0
Microwave Oven	0	0	0	0	0	0	0	0	0
Refrigerator (Cu Ft) 3-Way	3	3	5	3	5	6	6	6	6
Upgraded Refrigerator Door Panels	•	•	•	•	•	•	•	•	•
Furnace BTU		12M	12M	20M	12M	20M	20M	20M	20M
Range Hood W/Light and Fan		•	•	•	•	•	•	•	•
Laminate Galley Top W/Edge Band	•	•	•	•					



Model 865



Model 850



Model 975



Model 995



Model 1062



Model 1172

	SHORT BED				LONG BED				
	650	825	855S	865	850	975	995	1062	1172

Molded Galley Top			•		•	•	•	•	•
Laminate Counter Tops W/Edge Band	•	•	•	•	•	•	•	•	•
Backsplash		•	•	•	•	•	•	•	•
Single Sink	•	•	•						
Double Sink			•		•	•	•	•	•
Pantry W/Adjustable Shelves				•	•	•	•	•	•
Slide-Out Pantry				0	0	0	0	0	0
High Spout Galley Faucet	•	•	•						
Pull-Out Galley Faucet				•	•	•	•	•	•
Silverware Organizer	•	•	•	•	•	•	•	•	•
Sink Cover	0	0	0	0	0	0	0	0	0
Magazine and Spice Racks - Wood	0	0	0	0	0		0	0	0

**Fresh and Waste Water Systems**

Water Pump W/In-Line Filter	•	•	•	•	•	•	•	•	•
Water Heater - Tankless	•								
Water Heater Gas/Electric/DSI		•	•	•	•	•	•	•	•
Enclosed, Insulated and Heated Holding Tanks	•	•	•	•	•	•	•	•	•

**Bathroom**

Black Tank Flush	•	•	•	•	•	•	•	•	•
Medicine Cabinet W/Mirror Door			•	•	•	•	•	•	•
Storage Cabinet									•
Mirror on Bath Door	•	•	•	•	•	•	•	•	•
Sliding Bath Door		•	•	•	•	•	•	•	•
Hinged Bath Door	•				•	•	•	•	•
Towel Rod	•	•	•	•	•	•	•	•	•
Skylight - Dual Pane	•	•	•	•	•	•	•	•	•
Ducted Heat	•	•	•	•	•	•	•	•	•
Removable Clothes Rod	0	0	0	0	0	0	0	0	0

**Dinette**

Dinette W/Reversible Cushions	•	•	•	•	•	•	•	•	•
Facing Dinette Slide-Out			•		•	•	•	•	•

	SHORT BED				LONG BED				
	650	825	855S	865	850	975	995	1062	1172

Roll-Out Storage Drawers in Dinette (2)			•			•	•	•	•
Overhead Cabinet Bunk		0		•					
Bunk Bed W/Child Restraint			0						0
Child Restraint W/Bunk Pad		0	0	0					

**Cab-Over**

Deluxe Queen Innerspring Mattress W/Pillow Top		•	•	•	•	•	•	•	•
Bedsprad	•	•	•	•	•	•	•	•	•
Headboard			•		•	•	•	•	•
Bedmaid	0	0	0	0	0	0	0	0	0
LED Reading Lights	•	•	•	•	•	•	•	•	•
Open Wire Side Overhead Shelves			•	•					
Privacy Curtain	•	•	•	•	•	•	•	•	•
Folding Privacy Door									•
Ducted Heat			•		•	•	•	•	•
Carpeted Bed Base	•	•	•	•	•	•	•	•	•
Front Corner Cabinets, Hamper, Storage Cabinets and O'Heads					•				
C/S Wardrobe Cabinet W/Window, Hamper and Ent. Cabinet			•				•	•	
C/S Wardrobe Cabinet W/Window, Hamper and Storage Cabinet						•			
C/S Mirrored Wardrobe Cabinet W/Window									•

**Electrical**

Systems Monitor Panel	•	•	•	•	•	•	•	•	•
Battery Condition Indicator - LED	•	•	•	•	•	•	•	•	•
Single Battery	•	•	•	•					
Second Battery Compartment			0	0			•	•	
Battery Disconnect - Manual Push/Pull	•	•	•	•					•
Battery Disconnect - Manual Key Operated							•	•	•
Battery Separator	0	0	0	0	0	0	0	0	0
EZ Charge Battery Charging Port	•	•	•	•					
LED Interior Lighting	•	•	•	•	•	•	•	•	•

	SHORT BED				LONG BED				
	650	825	855S	865	850	975	995	1062	1172

Wall Switched Lighting				•	•	•	•	•	•
LED Wardrobe Light		0	0	0	0			0	0
12V/USB Outlet in Cab-Over	•	•	•	•	•	•	•	•	•
12V/USB Outlet in Dinette	0	0	0	0	0	0	0	0	0
HDMI LCD/Satellite Receiver Receptacle Wall Plate	•	•	•	•	•	•	•	•	•
Pre-Wired for Roof A/C	•	•	•	•	•	•	•	•	•
A/C - Coleman 9 Low Profile Ceiling Control	0	0	0	0	0	0	0	0	0
A/C - Coleman 11 Wall Control		0			0	0	0	0	0
Pre-Wired for Wall Thermostat	•	•	•	•	•	•	•	•	•
Pre-Wired for Fantastic Vent	•	•	•	•	•	•	•	•	•
Fantastic Roof Vent	0	0	0	0	0	0	0	0	0
Power Roof Vent in Bath	•	•	•	•	•	•	•	•	•
Pre-Wired for TV Ant/Sat Dish/Park Cable	•	•	•	•	•	•	•	•	•
TV Antenna HD	•	•	•	•	•	•	•	•	•
Satellite Dish	0	0	0	0	0	0	0	0	0
Satellite Dish Self Locating	0	0	0	0	0	0	0	0	0
AM/FM/DVD/CD/USB Bluetooth Audio System W/App Control	•	•	•	•	•	•	•	•	•
TV 19" (12 Volt)	0	0		0	0				
TV 24" (12 Volt)			0			0	0	0	0
Pre-Wired for Solar Panel	•	•	•	•	•	•	•	•	•
Solar Panel 95 Watt		0	0	0	0	0	0	0	0
LED Patio Light - Switched	•	•	•	•	•	•	•	•	•
LED Side Patio Lights	0	0	0	0	0	0	0	0	0
LED Docking Lights	0	0	0	0	0	0	0	0	0
Wireless Remote Slide-Out Control			•						
Exterior 110V Patio Outlet	•	•	•	•	•	•	•	•	•
Generator Ready			•						
Automatic Transfer Switch (Generator)			•						
Generator 2500 Watt LPG (Onan)			0				0	0	0
Backup Camera W/Truck Cab Wireless Monitor	0	0	0	0	0	0	0	0	0

• = Standard Option    0 = Optional Feature



Model 865



Model 850



Model 975



Model 995



Model 1062



Model 1172

	SHORT BED				LONG BED				
	650	825	855S	865	850	975	995	1062	1172

Molded Galley Top			•		•	•	•	•	•
Laminate Counter Tops W/Edge Band	•	•	•	•	•	•	•	•	•
Backsplash		•	•	•	•	•	•	•	•
Single Sink	•	•		•					
Double Sink			•		•	•	•	•	•
Pantry W/Adjustable Shelves				•	•	•	•	•	•
Slide-Out Pantry				0	0	0	0	0	0
High Spout Galley Faucet	•	•	•	•					
Pull-Out Galley Faucet			•		•	•	•	•	•
Silverware Organizer	•	•	•	•	•	•	•	•	•
Sink Cover	0	0	0	0	0	0	0	0	0
Magazine and Spice Racks - Wood	0	0	0	0	0		0	0	0

**Fresh and Waste Water Systems**

Water Pump W/In-Line Filter	•	•	•	•	•	•	•	•	•
Water Heater - Tankless	•								
Water Heater Gas/Electric/DSI		•	•	•	•	•	•	•	•
Enclosed, Insulated and Heated Holding Tanks	•	•	•	•	•	•	•	•	•

**Bathroom**

Black Tank Flush	•	•	•	•	•	•	•	•	•
Medicine Cabinet W/Mirror Door			•	•	•	•	•	•	•
Storage Cabinet									•
Mirror on Bath Door	•	•	•	•	•	•	•	•	•
Sliding Bath Door		•	•	•					
Hinged Bath Door	•				•	•	•	•	•
Towel Rod	•	•	•	•	•	•	•	•	•
Skylight - Dual Pane	•	•	•	•	•	•	•	•	•
Ducted Heat	•	•	•	•	•	•	•	•	•
Removable Clothes Rod	0	0	0	0	0	0	0	0	0

**Dinette**

Dinette W/Reversible Cushions	•	•	•	•	•	•	•	•	•
Facing Dinette Slide-Out			•		•	•	•	•	•

	SHORT BED				LONG BED				
	650	825	855S	865	850	975	995	1062	1172

Roll-Out Storage Drawers in Dinette (2)			•		•	•	•	•	•
Overhead Cabinet Bunk		0		•	•				
Bunk Bed W/Child Restraint			0						0
Child Restraint W/Bunk Pad		0	0	0					

**Cab-Over**

Deluxe Queen Innerspring Mattress W/Pillow Top	•	•	•	•	•	•	•	•	•
Bedsprad	•	•	•	•	•	•	•	•	•
Headboard			•		•	•	•	•	•
Bedmaid	0	0	0	0	0	0	0	0	0
LED Reading Lights	•	•	•	•	•	•	•	•	•
Open Wire Side Overhead Shelves		•		•					
Privacy Curtain	•	•	•	•	•	•	•	•	•
Folding Privacy Door									•
Ducted Heat			•		•	•	•	•	•
Carpeted Bed Base	•	•	•	•	•	•	•	•	•
Front Corner Cabinets, Hamper, Storage Cabinets and O'Heads					•				
C/S Wardrobe Cabinet W/Window, Hamper and Ent. Cabinet			•				•	•	
C/S Wardrobe Cabinet W/Window, Hamper and Storage Cabinet						•			
C/S Mirrored Wardrobe Cabinet W/Window									•

**Electrical**

Systems Monitor Panel	•	•	•	•	•	•	•	•	•
Battery Condition Indicator - LED	•	•	•	•	•	•	•	•	•
Single Battery	•	•	•	•					
Second Battery Compartment			0		0			•	•
Battery Disconnect - Manual Push/Pull	•	•	•	•					•
Battery Disconnect - Manual Key Operated							•	•	•
Battery Separator	0	0	0	0	0	0	0	0	0
EZ Charge Battery Charging Port	•	•	•	•	•				
LED Interior Lighting	•	•	•	•	•	•	•	•	•

	SHORT BED				LONG BED				
	650	825	855S	865	850	975	995	1062	1172

Wall Switched Lighting			•		•	•	•	•	•
LED Wardrobe Light		0	0	0	0				0
12V/USB Outlet in Cab-Over	•	•	•	•	•	•	•	•	•
12V/USB Outlet in Dinette	0	0	0	0	0	0	0	0	0
HDMI LCD/Satellite Receiver Receptacle Wall Plate	•	•	•	•	•	•	•	•	•
Pre-Wired for Roof A/C	•	•	•	•	•	•	•	•	•
A/C - Coleman 9 Low Profile Ceiling Control	0	0	0	0	0	0	0	0	0
A/C - Coleman 11 Wall Control		0			0	0	0	0	0
Pre-Wired for Wall Thermostat		•	•	•	•	•	•	•	•
Pre-Wired for Fantastic Vent	•	•	•	•	•	•	•	•	•
Fantastic Roof Vent	0	0	0	0	0	0	0	0	0
Power Roof Vent in Bath	•	•	•	•	•	•	•	•	•
Pre-Wired for TV Ant/Sat Dish/Park Cable	•	•	•	•	•	•	•	•	•
TV Antenna HD	•	•	•	•	•	•	•	•	•
Satellite Dish	0	0	0	0	0	0	0	0	0
Satellite Dish Self Locating	0	0	0	0	0	0	0	0	0
AM/FM/DVD/CD/USB Bluetooth Audio System W/App Control	•	•	•	•	•	•	•	•	•
TV 19" (12 Volt)	0	0		0	0				
TV 24" (12 Volt)			0		0	0	0	0	0
Pre-Wired for Solar Panel	•	•	•	•	•	•	•	•	•
Solar Panel 95 Watt	0	0	0	0	0	0	0	0	0
LED Patio Light - Switched	•	•	•	•	•	•	•	•	•
LED Side Patio Lights	0	0	0	0	0	0	0	0	0
LED Docking Lights	0	0	0	0	0	0	0	0	0
Wireless Remote Slide-Out Control			•		•	•	•	•	•
Exterior 110V Patio Outlet	•	•	•	•	•	•	•	•	•
Generator Ready			•		•	•	•	•	•
Automatic Transfer Switch (Generator)			•		•	•	•	•	•
Generator 2500 Watt LPG (Onan)			0		0	0	0	0	0
Backup Camera W/Truck Cab Wireless Monitor	0	0	0	0	0	0	0	0	0

• = Standard Option 0 = Optional Feature



## Micah & Anna Frazier, Rookie Bassmaster Elite Pro Angler

*"As a professional angler and newlywed, my wife Anna and I spend most of our time on the road. The two of us didn't have a lot of camping experience, but knew we wanted our own basecamp while on the road. We were drawn to Lance because of its unparalleled legacy of quality and reputation among fishermen.*

*My camper allows me the freedom to tow my boat and stay close to the water while also providing a safe and comfortable home away from home."*

## The Lance Look

Personalize your Lance by selecting from one of three tasteful interiors, assembled by an interior design team to create both stunning and functional Lance interiors. You'll find beautiful woods, wall treatments, and fabric combinations with dinette cushions that feature reversible cushions, providing two different looks with each decor.



Reversed Décor

Arrowhead



Reversed Décor

Mohave Dunes



Reversed Décor

Palm Springs



## Chris, Jeanette, & Maverick | 2013 855S

*"Only in a Lance! This is our second Lance Truck Camper and we're very happy Lancers! We camp, hunt, fish, prospect and mine while towing boats and cargo trailers. With the upgraded 4 season's package, solar panel and on board generator we can live on the road or in the backcountry for weeks on end- and we DO! Whether it's the northwest beach's or the dry deserts of the southwest, we have been very comfortable in our Lance 855S. Going places and doing things other RV's just can't. Solid construction and compact design allows access to the backwoods, while providing all the comforts of larger RV's. Lance once again has knocked it out of the park."*

## Micah & Anna Frazier, Rookie Bassmaster Elite Pro Angler

*"As a professional angler and newlywed, my wife Anna and I spend most of our time on the road. The two of us didn't have a lot of camping experience, but knew we wanted our own basecamp while on the road. We were drawn to Lance because of its unparalleled legacy of quality and reputation among fishermen. My camper allows me the freedom to tow my boat and stay close to the water while also providing a safe and comfortable home away from home."*

## The Lance Look

Personalize your Lance by selecting from one of three tasteful interiors, assembled by an interior design team to create both stunning and functional Lance interiors. You'll find beautiful woods, wall treatments, and fabric combinations with dinette cushions that feature reversible cushions, providing two different looks with each decor.



Reversed Décor

Arrowhead



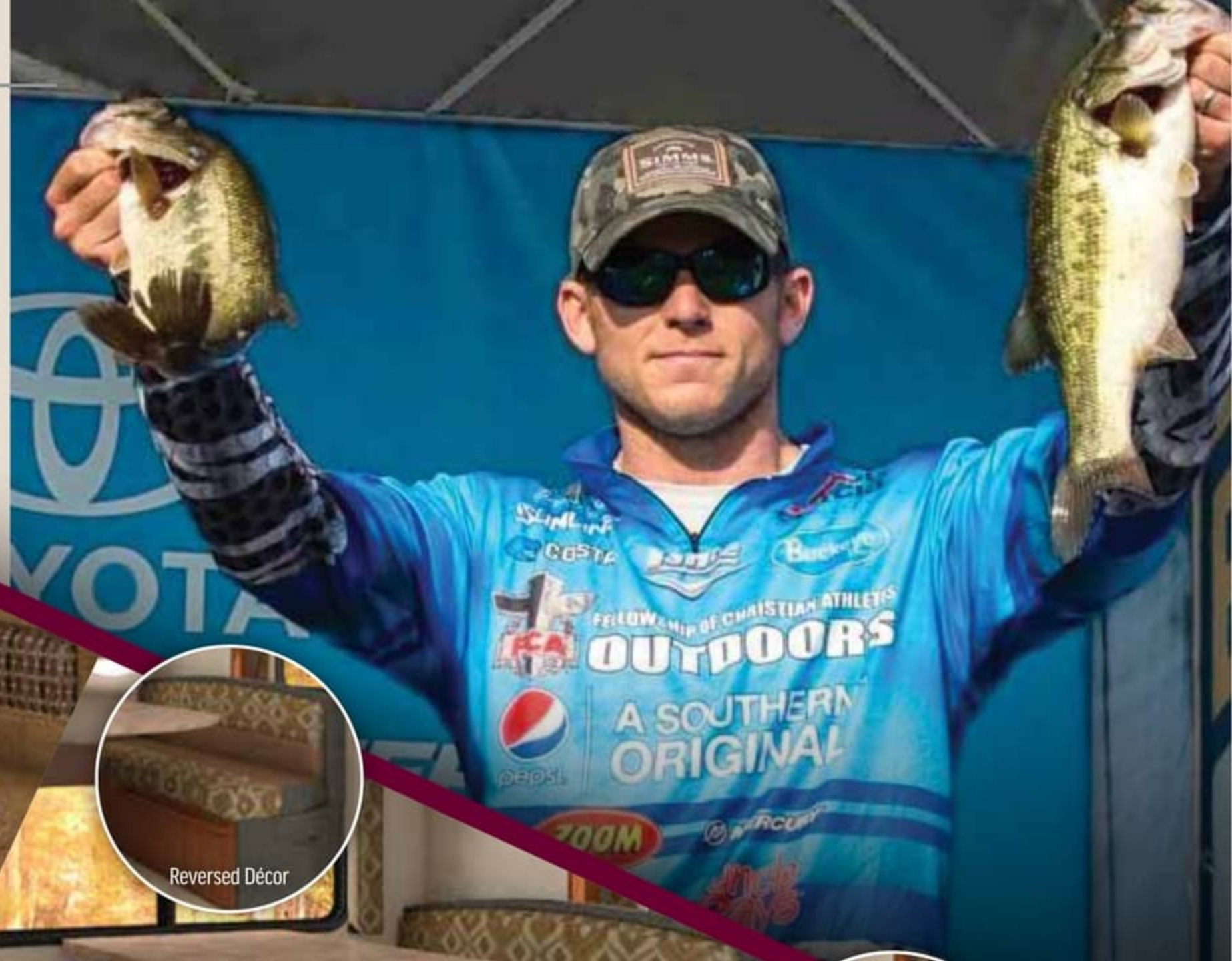
Reversed Décor

Mohave Dunes



Reversed Décor

Palm Springs



## Chris, Jeanette, & Maverick | 2013 855S

*"Only in a Lance! This is our second Lance Truck Camper and we're very happy Lancers! We camp, hunt, fish, prospect and mine while towing boats and cargo trailers. With the upgraded 4 season's package, solar panel and on board generator we can live on the road or in the backcountry for weeks on end- and we DO! Whether it's the northwest beach's or the dry deserts of the southwest, we have been very comfortable in our Lance 855S. Going places and doing things other RV's just can't. Solid construction and compact design allows access to the backwoods, while providing all the comforts of larger RV's. Lance once again has knocked it out of the park."*



**BATTERY CHARGING**



**CONVENIENCE FEATURES**



**CONVENIENCE FEATURES**

**Battery Charging Features:**

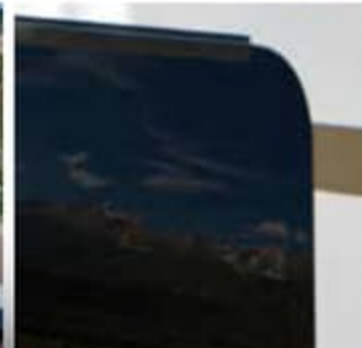
From left to right: 12v/USB Charger, Remote Charge Port, Battery Separator, 95W Solar Panel, 2500W LP Generator, Converter w/Built in Battery Charger, Solar Panel Charge Monitor Panel

**Convenience Features:**

From left to right: Keyless Entry w/Key Fob, Remote Control Jacks & Slide Room, Backup Camera, Pull Out Dinette Storage Drawers, ultraDECKplus Bumper, Exterior Propane Connection, Electric Rear Awning, Bed Maid System, AM/FM/DVD/CD/USB Bluetooth Audio System w/App Control, Fold Down Bunk, Skylight Shade & Insulated Cover, Heike Dual Pane Vent

**Exterior Highlights:**

From left to right: Aerodynamic TPO Front Nose Cap, Full View Dual Pane Tinted Windows, Roof Rack System, Automatic Satellite Dish



**EXTERIOR HIGHLIGHTS**



**BATTERY CHARGING**



**CONVENIENCE FEATURES**



**CONVENIENCE FEATURES**

**Battery Charging Features:**

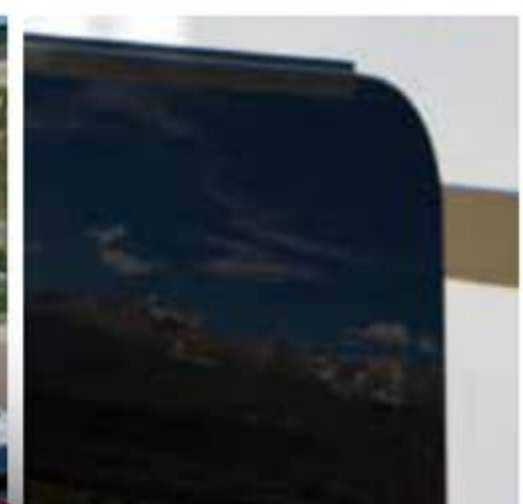
From left to right: 12v/USB Charger, Remote Charge Port, Battery Separator, 95W Solar Panel, 2500W LP Generator, Converter w/Built in Battery Charger, Solar Panel Charge Monitor Panel

**Convenience Features:**

From left to right: Keyless Entry w/Key Fob, Remote Control Jacks & Slide Room, Backup Camera, Pull Out Dinette Storage Drawers, ultraDECKplus Bumper, Exterior Propane Connection, Electric Rear Awning, Bed Maid System, AM/FM/DVD/CD/USB Bluetooth Audio System w/App Control, Fold Down Bunk, Skylight Shade & Insulated Cover, Heike Dual Pane Vent

**Exterior Highlights:**

From left to right: Aerodynamic TPO Front Nose Cap, Full View Dual Pane Tinted Windows, Roof Rack System, Automatic Satellite Dish



**EXTERIOR HIGHLIGHTS**



## TOWING+

When towing behind a larger camper, extending the hitch rearward is necessary. Lance recommends the Torklift SuperHitch receiver hitch and hitch box extension. It replaces standard truck factory receivers to allow for greater towing capacities.\*

*\*Always observe your trucks' tow ratings. Follow the advice of your Factory Authorized Lance Dealer.*

WEIGHT CARRYING/ TONGUE WEIGHT	WEIGHT DISTRIBUTION TONGUE WEIGHT
<b>TOW CAPACITIES (IN POUNDS) FOR THE LANCE MODEL REQUIRING ONLY A TORKLIFT SUPERHITCH MAGNUM RECEIVER HITCH</b>	
<b>15,000/1500</b>	<b>20,000/2000</b>
<b>TOW CAPACITIES (IN POUNDS) FOR LANCE MODELS REQUIRING BOTH A TORKLIFT SUPERHITCH MAGNUM RECEIVER HITCH AND HITCH BOX EXTENSION</b>	

Dealer modifications required. Consult your Factory Authorized Lance Dealer for professional technical advice and proper equipment installation.

<b>32" extension</b>	<b>6,500/650</b>	<b>12,000/1200</b>
<b>42" or 48" extension</b>	<b>6,000/600</b>	<b>12,000/1200</b>
<b>60" extension</b>	<b>5,000/500</b>	<b>10,000/1000</b>

## DEALER+INSTALLED+SUPPORT EQUIPMENT

- 1 **Torklift SuperHitch Extension System** increases your towing capabilities over your trucks' factory-stock hitch
- 2 **Wireless Rear-View Camera/Microphone and 7-Inch In-Cab LCD Monitor** lets you see – and hear – what's behind you
- 3 **Frame-Mount Anchoring System and Front-Mounted Centering Guides** assist center alignment in the truck bed (Happijac® shown)
- 4 **Qwik-Load™ Front and Rear Turnbuckles** safely and securely attach and anchor the camper to your truck (Happijac® shown)
- 5 **Hellwig Air Springs** ("air bags") provide better handling and control under heavily loaded conditions
- 6 **Rancho® RS-9000X™ Front and Rear Shocks** greatly improve ride in all weather and road conditions
- 7 **In-Cab Remote Control** controls the air compressor and pressure for the air springs ("air bags")
- 8 **Lance Custom Design™ Cab-Over Shocks** ("cab-over struts") reduce the impact of up-and-down motion from irregular roads
- 9 **Rear-Mounted Centering Guides** assist in positioning your camper within the truck bed, and are available for most truck models
- 10 **Hellwig Big Wig™ Sway Bars** reduce body roll providing better vehicle control

### You have a choice of tie-down systems



**Lance-Exclusive Cab-Over Shocks** ("cab-over struts") have quick-release stainless steel connectors

**Hellwig Big Wig Air Springs** ("air bags") offers superior ride quality and load leveling by capability by transferring load from the vehicles leaf springs.



**Qwik-Load Turnbuckle Upgrades** make anchoring your camper a snap (Happijac® shown)



**Wireless Rear-View camera/monitor** maximizes safety



## TOWING+

When towing behind a larger camper, extending the hitch rearward is necessary. Lance recommends the Torklift SuperHitch receiver hitch and hitch box extension. It replaces standard truck factory receivers to allow for greater towing capacities.\*

*\*Always observe your trucks' tow ratings. Follow the advice of your Factory Authorized Lance Dealer.*

	WEIGHT CARRYING/ TONGUE WEIGHT	WEIGHT DISTRIBUTION TONGUE WEIGHT
<b>TOW CAPACITIES (IN POUNDS) FOR THE LANCE MODEL REQUIRING ONLY A TORKLIFT SUPERHITCH MAGNUM RECEIVER HITCH</b>		
	<b>15,000/1500</b>	<b>20,000/2000</b>
<b>TOW CAPACITIES (IN POUNDS) FOR LANCE MODELS REQUIRING BOTH A TORKLIFT SUPERHITCH MAGNUM RECEIVER HITCH AND HITCH BOX EXTENSION</b>		

Dealer modifications required. Consult your Factory Authorized Lance Dealer for professional technical advice and proper equipment installation.

<b>32" extension</b>	<b>6,500/650</b>	<b>12,000/1200</b>
<b>42" or 48" extension</b>	<b>6,000/600</b>	<b>12,000/1200</b>
<b>60" extension</b>	<b>5,000/500</b>	<b>10,000/1000</b>

## DEALER+INSTALLED+SUPPORT EQUIPMENT

- 1 Torklift SuperHitch Extension System** increases your towing capabilities over your trucks' factory-stock hitch
- 2 Wireless Rear-View Camera/Microphone and 7-Inch In-Cab LCD Monitor** lets you see – and hear – what's behind you
- 3 Frame-Mount Anchoring System and Front-Mounted Centering Guides** assist center alignment in the truck bed (Happijac® shown)
- 4 Qwik-Load™ Front and Rear Turnbuckles** safely and securely attach and anchor the camper to your truck (Happijac® shown)
- 5 Hellwig Air Springs** ("air bags") provide better handling and control under heavily loaded conditions
- 6 Rancho® RS-9000X™ Front and Rear Shocks** greatly improve ride in all weather and road conditions
- 7 In-Cab Remote Control** controls the air compressor and pressure for the air springs ("air bags")
- 8 Lance Custom Design™ Cab-Over Shocks** ("cab-over struts") reduce the impact of up-and-down motion from irregular roads
- 9 Rear-Mounted Centering Guides** assist in positioning your camper within the truck bed, and are available for most truck models
- 10 Hellwig Big Wig™ Sway Bars** reduce body roll providing better vehicle control

### You have a choice of tie-down systems



Hitch box extension ("tow bar")

Safety chains

**Lance-Exclusive Cab-Over Shocks** ("cab-over struts") have quick-release stainless steel connectors



**Hellwig Big Wig Air Springs** ("air bags") offers superior ride quality and load leveling by capability by transferring load from the vehicles leaf springs.



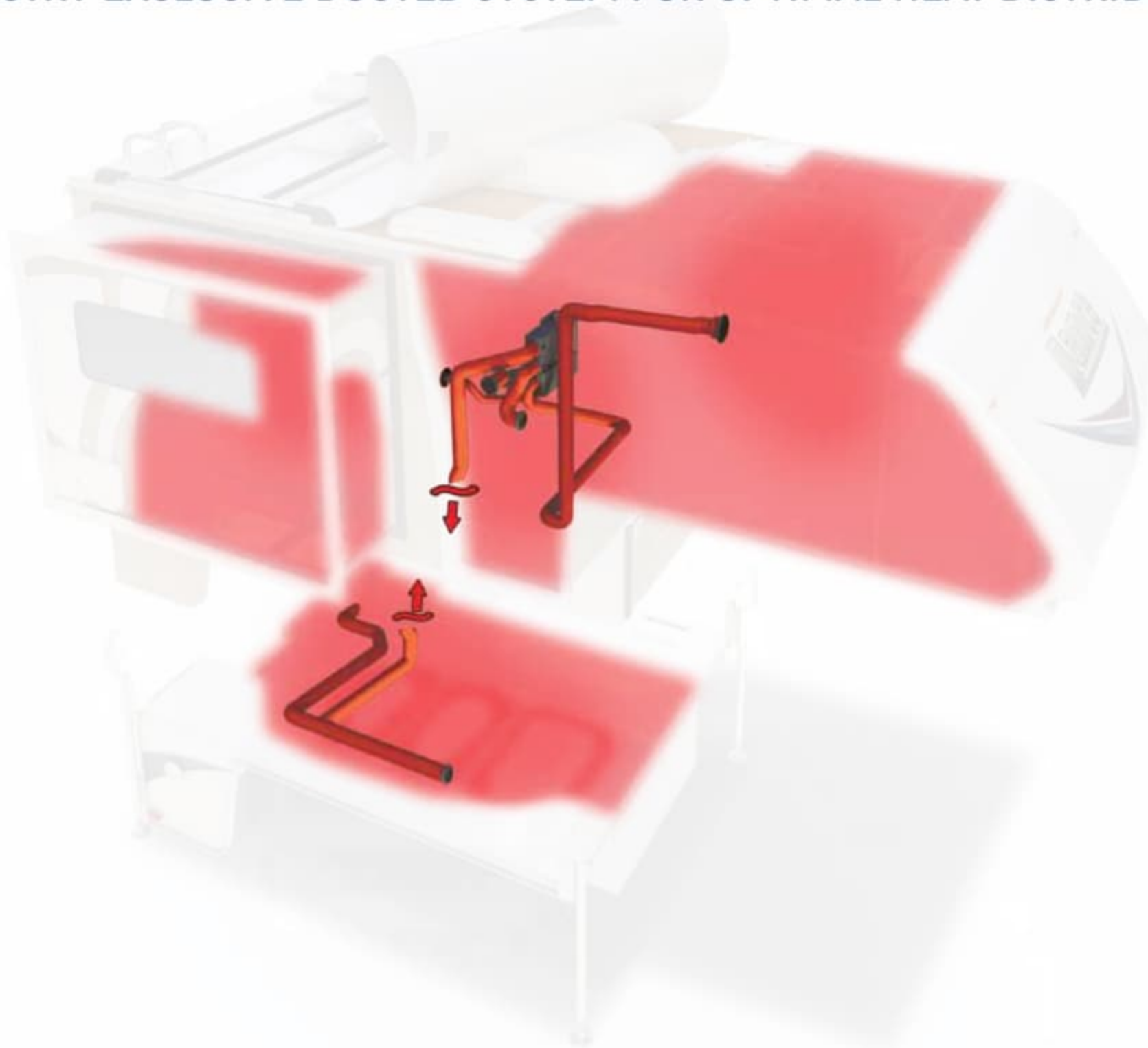
**Qwik-Load Turnbuckle Upgrades** make anchoring your camper a snap (Happijac® shown)



**Wireless Rear-View camera/monitor** maximizes safety

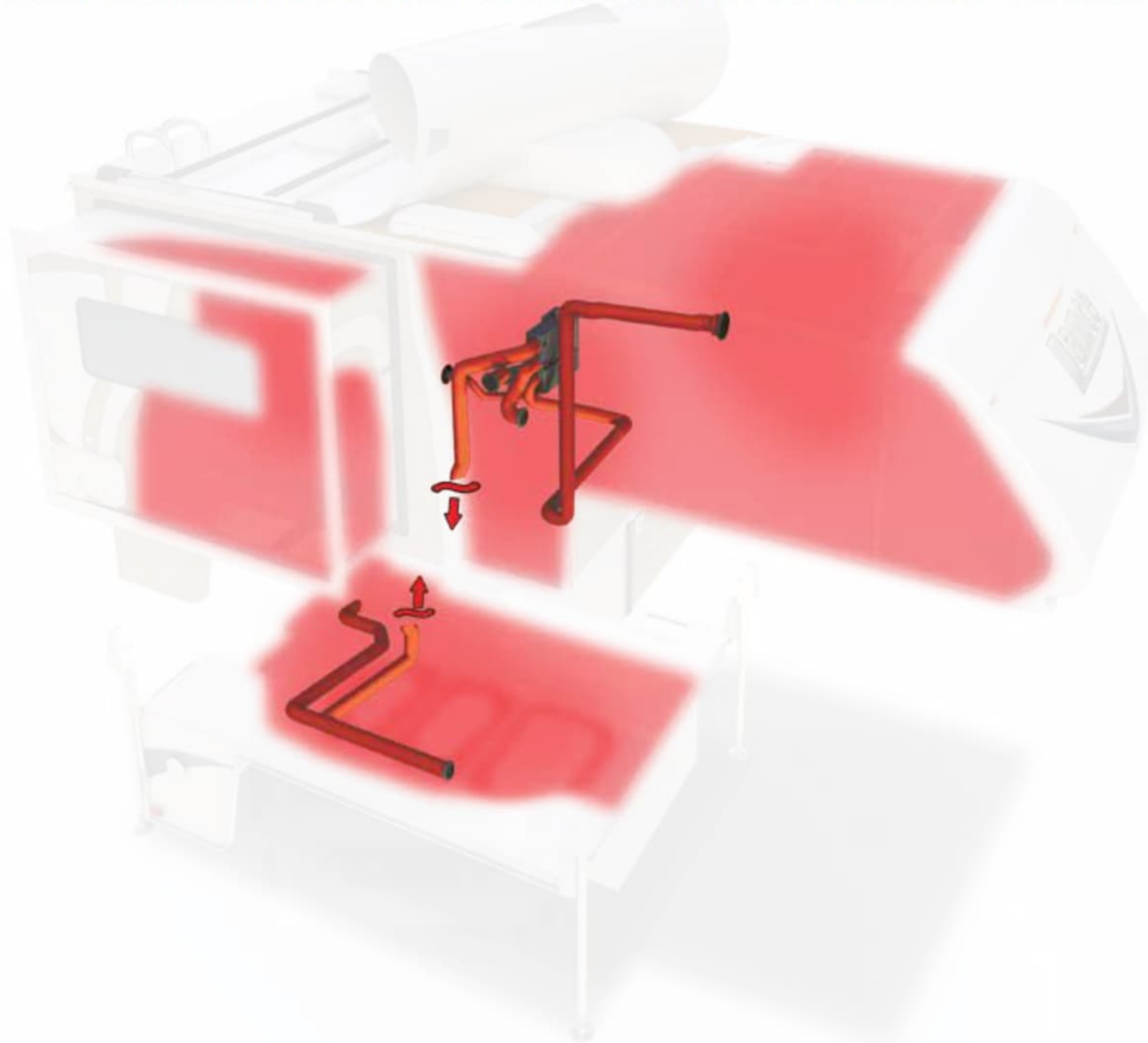
# HEAT IT LIKE YOU MEAN IT!

INDUSTRY EXCLUSIVE DUCTED SYSTEM FOR OPTIMAL HEAT DISTRIBUTION



# HEAT IT LIKE YOU MEAN IT!

INDUSTRY EXCLUSIVE DUCTED SYSTEM FOR OPTIMAL HEAT DISTRIBUTION





# LANCE DESIGN AND CONSTRUCTION. THE LEGACY OF QUALITY BEGINS HERE.

The slick high gloss fiberglass exterior walls are laminated under intense pressure with heat-setting adhesives for years of trouble-free service.

The roof is made of energy-star rated TPO with vents that clamp into place eliminating screws and potential leaks. Integrated rain gutters and drip spouts keep the sides of your camper cleaner and prevent streaking with a roof strong enough to store ample gear.

Interiors are constructed of Lite-Ply™ which Lance imports from Europe. This superior product is lighter, formaldehyde free and stronger providing both beauty and durability.

With an aluminum framed superstructure, the entire camper fits together like a perfect puzzle.

"LanceLock™" features interlocking aluminum extrusions to connect all exterior panels.



All seals use an anti-wicking material to prevent moisture from transferring into the laminate walls.

3D advanced CAD engineering creates precise plans that run CNC machinery. The result is that every part is the same and perfect every time.

Keeping it all together are stainless steel fasteners. Unlike our competitors, this expensive hardware resists corrosion making for a lasting investment.

Rigid block foam insulation fits tight to resist sagging and promotes structural strength.

Lance uses more expensive Azdel™ in place of Luan wood virtually eliminating mold and mildew. It's also lighter, formaldehyde free and has a better "R" value for superior insulation.

Beautiful and aerodynamic, the nose cap is made of TPO, the same material used for bumpers on automobiles. Its high gloss finish is resilient and resistant to the abuses of the road. And it's slick surface makes it easier to clean. (Select Models)



## 4 Seasons Certified All Weather Package

Utilize your truck camper all year long. Remain comfortable in extreme heat or cold temperatures with the Lance Four Seasons Certified option.

## 2 YEAR STRUCTURAL LIMITED WARRANTY

Please see [lancecamper.com/warranty](http://lancecamper.com/warranty) for details.

### KEY SUPPLIER PARTNERS



# LANCE DESIGN AND CONSTRUCTION. THE LEGACY OF QUALITY BEGINS HERE.

The slick high gloss fiberglass exterior walls are laminated under intense pressure with heat-setting adhesives for years of trouble-free service.

The roof is made of energy-star rated TPO with vents that clamp into place eliminating screws and potential leaks. Integrated rain gutters and drip spouts keep the sides of your camper cleaner and prevent streaking with a roof strong enough to store ample gear.

Interiors are constructed of Lite-Ply™ which Lance imports from Europe. This superior product is lighter, formaldehyde free and stronger providing both beauty and durability.

With an aluminum framed superstructure, the entire camper fits together like a perfect puzzle.

"LanceLock™" features interlocking aluminum extrusions to connect all exterior panels.



All seals use an anti-wicking material to prevent moisture from transferring into the laminate walls.

3D advanced CAD engineering creates precise plans that run CNC machinery. The result is that every part is the same and perfect every time.

Keeping it all together are stainless steel fasteners. Unlike our competitors, this expensive hardware resists corrosion making for a lasting investment.

Rigid block foam insulation fits tight to resist sagging and promotes structural strength.

Lance uses more expensive Azdel™ in place of Luan wood virtually eliminating mold and mildew. It's also lighter, formaldehyde free and has a better "R" value for superior insulation.

Beautiful and aerodynamic, the nose cap is made of TPO, the same material used for bumpers on automobiles. Its high gloss finish is resilient and resistant to the abuses of the road. And it's slick surface makes it easier to clean. (Select Models)



## 4 Seasons Certified All Weather Package

Utilize your truck camper all year long. Remain comfortable in extreme heat or cold temperatures with the Lance Four Seasons Certified option.



Please see [lancecamper.com/warranty](http://lancecamper.com/warranty) for details.

### KEY SUPPLIER PARTNERS



# Truck+Camper Compatibility Guide

## IMPORT FULL-SIZED SHORT BEDS

Nissan® Titan™/Toyota® Tundra™

Lance **650**  
5'+ short beds

Lance **825**

Lance **865**  
6'+ short beds



## LIGHT-DUTY F-150/1500 SERIES

(or larger)

Lance **650**  
5'+ short beds

Lance **825**

Lance **865**  
6'+ short beds



## HEAVY-DUTY F-250/2500 SERIES

(or larger) 6' short beds

Lance **650**

Lance **825**

Lance **865**

Lance **855S**

Short bed – Minimum six-foot bed



## HEAVY-DUTY F-350/3500 SERIES

(or larger) Single-rear-wheel 8' long beds

Lance **850**

Lance **975**

Lance **995**

Lance **1062**



## HEAVY-DUTY F-350/3500 SERIES

(or larger) Dual-rear-wheel 8' long beds

Lance **850**

Lance **975**

Lance **995**

Lance **1062**

Lance **1172**



## HEAVY-DUTY F-250/2500 SERIES

(or larger) Single-rear-wheel 8' long beds

Lance **850**



These are general guidelines to use when matching a Lance camper to your truck and assumes standard equipment on both the truck and camper. Whether any camper can be used with your truck is dependent on your truck configuration (2WD vs. 4WD, standard cab vs. extended cab, etc.) and its capacities for carrying and/or towing – how much optional equipment is added to the camper – what you tow – and the weight of passengers and all other items you carry in your truck and camper. Because we're unfamiliar with your specific truck and how you intend to use it, Lance makes no warranties or representation – express or implied – as to performance or reliability of your truck with a Lance camper. For professional guidance, always consult with your Factory Authorized Lance Dealer. They're trained in properly matching truck/camper rigs.

## Lance Owners of America (LOA)

The Lance Owners of America is an organization of people that all share some common interests. We all love traveling and camping in our Lance Truck Campers, Travel Trailers and Toy Haulers. We would like to invite you to explore our website and consider becoming a member of the Lance Owners of America. Our goal is to provide the Lance Owner community with valuable information and events to help make your Lance camping experience a great one. [LanceOwners.org](http://LanceOwners.org)

FREE with purchase of your new Lance! Get the safety and convenience you need when your on the road. Your membership covers you, a spouse or significant other, and children age 24 or younger, licensed to drive your RV or other vehicles owned. Membership includes emergency roadside assistance and concierge service that you can use both on and off the road.

## EXCLUSIVE ROADSIDE ASSISTANCE

2016 LANCE TRUCK CAMPER BROCHURE ©2015 Lance Camper Mfg. Corp. (LCMC). All rights reserved. Lance, the Lance logomark, the Lance logomark with chevron, The Lance Look, Lance Custom Design, Bed-Maid, LanceLock, ultraDECKplus, Discover The Lance Difference, SkyView and other exclusive Lance product names, marks or designations are trademarks, service marks or registered trademarks of LCMC. All other marks are property of their respective owners. **All product data, graphics and photography, illustrations and/or renderings in this book were as accurate as possible at press time. Subsequent refinements during the model year may be evident in the actual product. LCMC reserves the right to change prices, colors, materials, equipment and specifications without notice – as well as to add, modify or discontinue models shown in promotion materials and/or on its websites.** All weights, fuel and liquid capacities are approximate and dimensions are nominal. It is that owner's sole responsibility to select the proper Lance camper model and support equipment appropriate to their truck without exceeding safe weight operating capacities. Your Factory Authorized Lance Dealer can advise you of the operating parameters for your particular configuration, and can confirm prices and product specifications material prior to making your purchase decision. See website for full warranty information. Brochure printed in the USA on FSM paper. 40M. 0116. Rev1.

Click on the QR code and "Discover The Lance Difference" for yourself while taking a plant tour of Lance Camper Mfg. Corp.

[LANCERCAMPER.COM](http://LANCERCAMPER.COM)



# Truck+Camper Compatibility Guide

## IMPORT FULL-SIZED SHORT BEDS

Nissan® Titan™/Toyota® Tundra™

Lance **650**  
5'+ short beds

Lance **825**

Lance **865**  
6'+ short beds



## LIGHT-DUTY F-150/1500 SERIES

(or larger)

Lance **650**  
5'+ short beds

Lance **825**

Lance **865**  
6'+ short beds



## HEAVY-DUTY F-250/2500 SERIES

(or larger) 6' short beds

Lance **650**

Lance **825**

Lance **865**

Lance **855S**

Short bed – Minimum six-foot bed



## HEAVY-DUTY F-350/3500 SERIES

(or larger) Single-rear-wheel 8' long beds

Lance **850**

Lance **975**

Lance **995**

Lance **1062**



## HEAVY-DUTY F-350/3500 SERIES

(or larger) Dual-rear-wheel 8' long beds

Lance **850**

Lance **975**

Lance **995**

Lance **1062**

Lance **1172**



## HEAVY-DUTY F-250/2500 SERIES

(or larger) Single-rear-wheel 8' long beds

Lance **850**



These are general guidelines to use when matching a Lance camper to your truck and assumes standard equipment on both the truck and camper. Whether any camper can be used with your truck is dependent on your truck configuration (2WD vs. 4WD, standard cab vs. extended cab, etc.) and its capacities for carrying and /or towing – how much optional equipment is added to the camper – what you tow – and the weight of passengers and all other items you carry in your truck and camper. Because we're unfamiliar with your specific truck and how you intend to use it, Lance makes no warranties or representation – express or implied – as to performance or reliability of your truck with a Lance camper. For professional guidance, always consult with your Factory Authorized Lance Dealer. They're trained in properly matching truck/camper rigs.

## Lance Owners of America (LOA)

The Lance Owners of America is an organization of people that all share some common interests. We all love traveling and camping in our Lance Truck Campers, Travel Trailers and Toy Haulers. We would like to invite you to explore our website and consider becoming a member of the Lance Owners of America. Our goal is to provide the Lance Owner community with valuable information and events to help make your Lance camping experience a great one. [LanceOwners.org](http://LanceOwners.org)

FREE with purchase of your new Lance! Get the safety and convenience you need when you're on the road. Your membership covers you, a spouse or significant other, and children age 24 or younger, licensed to drive your RV or other vehicles owned. Membership includes emergency roadside assistance and concierge service that you can use both on and off the road.

## EXCLUSIVE ROADSIDE ASSISTANCE

2016 LANCE TRUCK CAMPER BROCHURE ©2015 Lance Camper Mfg. Corp. (LCMC). All rights reserved. Lance, the Lance logomark, the Lance logomark with chevron, The Lance Look, Lance Custom Design, Bed-Maid, LanceLock, ultraDECKplus, Discover The Lance Difference, SkyView and other exclusive Lance product names, marks or designations are trademarks, service marks or registered trademarks of LCMC. All other marks are property of their respective owners. **All product data, graphics and photography, illustrations and/or renderings in this book were as accurate as possible at press time. Subsequent refinements during the model year may be evident in the actual product. LCMC reserves the right to change prices, colors, materials, equipment and specifications without notice – as well as to add, modify or discontinue models shown in promotion materials and/or on its websites.** All weights, fuel and liquid capacities are approximate and dimensions are nominal. It is that owner's sole responsibility to select the proper Lance camper model and support equipment appropriate to their truck without exceeding safe weight operating capacities. Your Factory Authorized Lance Dealer can advise you of the operating parameters for your particular configuration, and can confirm prices and product specifications material prior to making your purchase decision. See website for full warranty information. Brochure printed in the USA on FSM paper. 40M. 0116. Rev1.

Click on the QR code and "Discover The Lance Difference" for yourself, while taking a plant tour of Lance Camper Mfg. Corp.

[LANCECAMPER.COM](http://LANCECAMPER.COM)

