



[www.LanceCamper.com](http://www.LanceCamper.com)

# Lance 2008

Second Edition

2008 MODELS

- Lance 805 **21**
- Lance 815 **16-17**
- Lance 825 **18-19**
- Lance 830 **20-21**
- Lance 835 **15**
- Lance 845 **22-23**
- Lance 861 **20**
- Lance 915 **14**
- Lance 971 **13**
- Lance 981 **13**
- Lance 992 **12**
- Lance 1055 **10-11**
- Lance 1131 **8-9**
- Lance 1181 **6-7**
- Lance 1191 **5**
- Footnotes for specs **4**

FEATURES

- Truck + camper matching **4**
- Construction **26-27**
- Standard features **28-29**
- Go anywhere **29**
- Options **30-31**
- Camper power **31**
- Factory tours **31**
- Selected highlights **32**
- The Lance Warranty **32**
- Selected accessories **33**
- Dealer-installed equipment **34**
- Towing **35**

2

LANCE LOOK™

- Cool River (blue interior) **10-11, 12, 15, 18-19, 22-23**
- Day Dreamer (brown) **5, 8-9**
- Nature's Envy (green) **6-7, 13, 20-21**
- Structure (ebony) **16-17, 24**
- SportsCamper™ option **14**

LANCE LIFE

- Outdoorsman Scott Astorga **3**
- PRCA champion Bill Huber **6**
- Adventurer Brad Christ **10**
- Backcountry riders John + Peggy Wyly **16**
- Touring retirees Tom + Betty Wade **22**
- Outdoorsman Tony Chachere III **26**

**Memories.** Tales told 'round the fire. Of people. Places. Things done. A summer's camping. Boating. Fishing the lakes. Those hunting trips. Backcountry horse rides. Four-wheeling the dunes. Winter's sports. Visiting friends in the country. **Whatever your outdoor passions, a Lance camper can make memories that last lifetimes.**



# Lance 2008

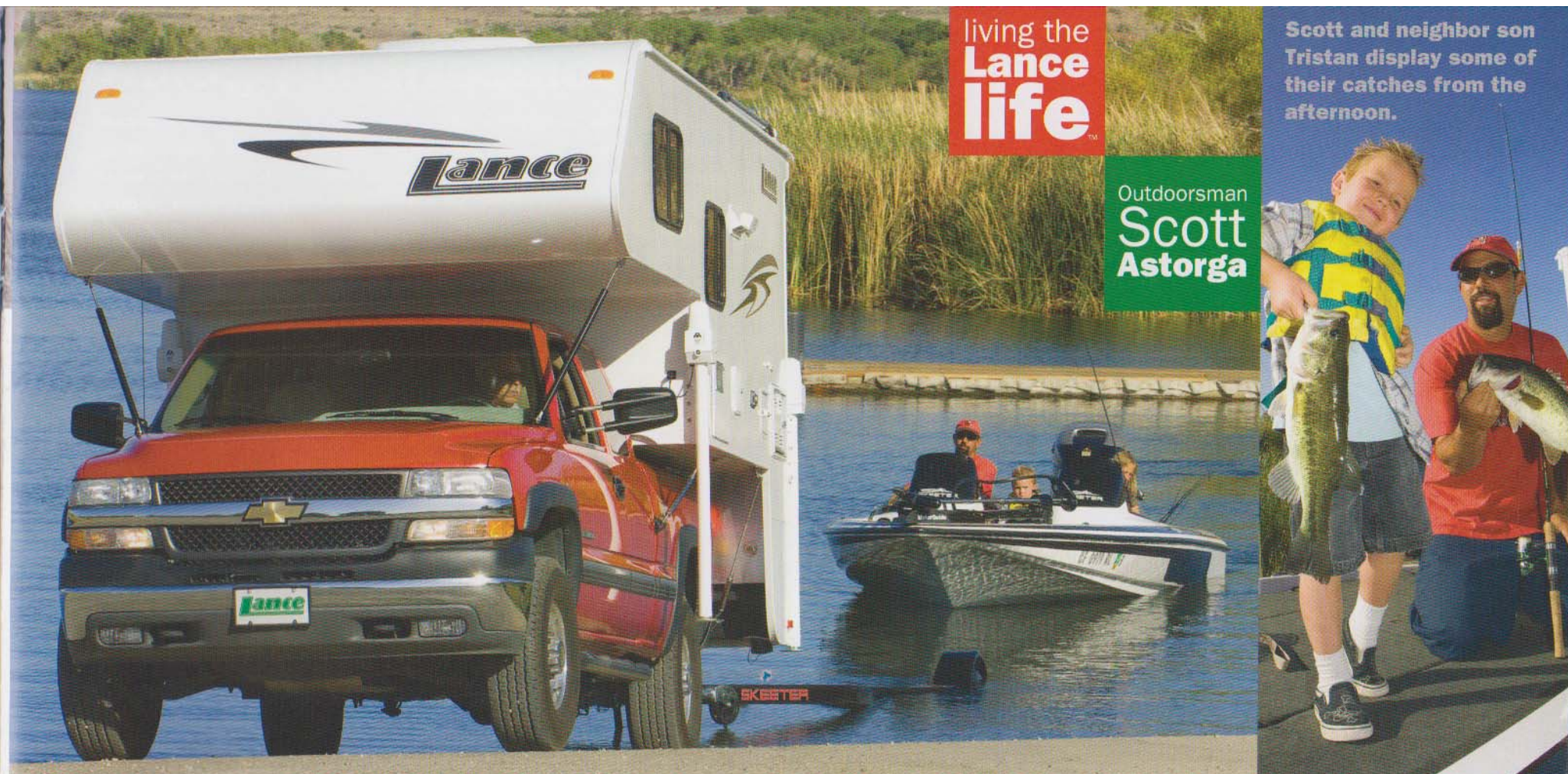
ABOUT US

Established in 1965, Lance is North America's largest truck camper manufacturer - with a staff of over 400 working within 141,000 square feet of custom-designed, state-of-the-art manufacturing and customer service facilities on a 22-acre campus in Southern California.

living the  
**Lance**  
**life**<sup>TM</sup>

Scott and neighbor son  
Tristan display some of  
their catches from the  
afternoon.

Outdoorsman  
**Scott**  
**Astorga**



**If you're looking for an RV** – and trying to decide amongst towables, campers or motorized – here are some very practical reasons to own a truck camper: **Purchase price far less than a motorhome. Lower overall cost of ownership** (versus motorhome's registration, fuel, storage, tires, engine and transmission maintenance, insurance and depreciation). **No storage costs** when stored at home. **Tow all your toys** – boats, horses, cargo, motorcycles, snowmobiles, ATVs, etc. **Ease in getting around. Highly maneuverable. Go anywhere your truck goes. Not limited to RV sites. Better fuel economy. Less warranty and service issues. Easier to find techs and parts to work on a pickup truck than a motorhome chassis. Comfort behind the wheel. No need to get used to a new vehicle. No trouble backing-up. The most versatile RV. 3-in-1 combination: vehicle, camper, trailer.**



With 43 years' experience specializing in truck camper design, engineering and construction – and earning the RV industry's reputation for best in owner satisfaction and camper quality – Lance has more than 100 Factory Authorized Dealerships across the U.S. and Canada ready to serve you. And you can visit us online at [LanceCamper.com](http://LanceCamper.com).

**RVIA**  
MEMBER

Lance Camper Manufacturing Corporation | 43120 Venture Street | Lancaster California 93535-4510 USA

**Lance**

# matching your truck + camper

Truck manufacturers provide consumers with certain ratings to help determine the capacities of the truck, as manufactured. Some of those ratings are posted on the door jam, a label in the glove box, or in the owner's manual.

If you already own a truck that you intend to use for a camper, it's always wise to take it to a commercial truck scale to determine the actual weight of the truck. That information - along with your truck capacity information - will help determine the remaining capacities for carrying and/or towing.

Camper weights - both dry and wet - vary depending on what optional equipment you've installed and how full your holding tanks are. Also take into consideration the weight of gear, passengers and trailer tongue weight (if towing).

Truck and camper package handling can be greatly improved by adding support equipment like air springs ("air bags"), and special truck and cabover shocks - as outlined on page 34. Maintaining maximum tire pressure on quality tires with ratings equal to, or better than, your original tires is also important.

Because we're unfamiliar with your specific truck and how you intend to use it, Lance makes no warranties or representation - express or implied - as to the performance or reliability of your truck with a Lance camper.

For professional guidance, see your nearest Factory Authorized Lance Dealer. They're trained in properly calculating truck/camper packages.

## truck + camper compatibility guide

The following are general guidelines to use when matching a Lance camper to your truck, and assumes standard equipment on both the truck and camper. Whether *any* camper can be used with your truck is dependent on your truck configuration (2WD vs. 4WD, standard cab vs. extended cab, etc.) - how much optional equipment is added to the camper - what you tow - and the weight of passengers and all other items you carry in your truck and camper. **Always consult with your Factory Authorized Lance Dealer.**

Compatible with domestic F-350/3500 Series (and larger) dually long bed trucks



Lance  
**1191**

Lance  
**1181**

Lance  
**1131**

Compatible with domestic heavy-duty F-250/2500 Series (and larger) single-rear-wheel long bed trucks



Lance  
**1055**

Lance  
**992**

Lance  
**981**

Lance  
**971**

Lance  
**915**

Lance  
**835**

Lance  
**815**

Lance  
**805**  
with long bed modifications

Compatible with domestic heavy-duty F-250/2500 Series (and larger) short bed trucks



Lance  
**861**

Lance  
**845**

Lance  
**830**

Lance  
**825**

Lance  
**815**

Lance  
**805**  
with short bed modification skirts

Compatible with most domestic light-duty F-150/1500 Series (and larger) short bed trucks



Lance  
**825**

Lance  
**815**

Lance  
**805**  
with short bed modification skirts

The Lance 805 fits stepside trucks

Compatible with import full-size (Toyota® Tundra®/Nissan® Titan®) short or long bed trucks



Lance  
**825**  
SHORT BED ONLY

Lance  
**805**

Though designed primarily for short beds, long beds can accommodate a Lance 805 with modifications available through your Factory Authorized Lance Dealer



### FOOTNOTES FOR SPECS

**Cabover interior headroom height** measured from cabover floor (without mattress) to highest point in cabover ceiling. **Truck bed height** measured from camper's truck bed plate to roof (without air conditioning unit, satellite TV antenna or roof storage system) - including the seven inches for the top of roof ladder. **Overall exterior height** measured from camper's retracted legs to roof (without air conditioning unit, satellite TV antenna or roof storage system) - including the seven inches for the top of roof ladder. **Center of gravity** is the balance point of a base-weight camper (with fluids) loaded onto a truck - and is measured from the point of contact (the truck's tail lights) forward towards the truck's cab. **Dry weight** based upon standard base model features - not including options or dealer-installed items.

# Lance 1191

An 11'6" dry bath camper with side entry and dinette slideout on roadside. This is a favorite for those who want egress from a camper without having a hitch to step over. When we sat down to design this

model, we wanted the look-and-feel of a motorhome. We believe we've accomplished this. Along with a spectacular interior, the 1191 has a roomy rear trunk compartment outside for tools and gear. It's designed for F-350/3500 Series trucks with dual-rear-wheels.



- 1 Optional clothes rod in bath for drying wet clothes or hanging-up bulky ones.
- 2 Rear trunk storage compartment.
- 3 Lots of counter space in galley.
- 4 Storage within optional dinette sofa/bed - under center cushion and in large pullout drawers in seatboxes.
- 5 Optional wraparound



U-shaped sofa/bed in Villa® Fairway Papyrus™ upholstery. 6 Overhead youth bunk (with child-restraint netting) and sofa/bed shown fully deployed in sleep mode.



**BASEMENT MODEL**

- Interior floor length 11'6"
- Interior height 6'8"
- Cabover interior headroom 44.5"\*
- Truck bed height 101.75"\*
- Exterior width 96"
- Overall exterior height 112.75"\*
- Fresh water tank 35 gallons
- Grey water tank 35 gallons
- Black water tank 35 gallons
- Propane 2 seven-gallon tanks
- Refrigerator 6 cubic feet - three-way power mode
- Furnace 20,000 BTUs
- Generator Optional
- Shower/toilet type Dry bath
- Queen cabover + dinette beds Standard
- Fold-down bunk bed Optional

**EXTENDED CABOVER ONLY**

- Exterior length 20'2"
- Center of gravity 43"\*
- Dry weight 3530 pounds\*



5

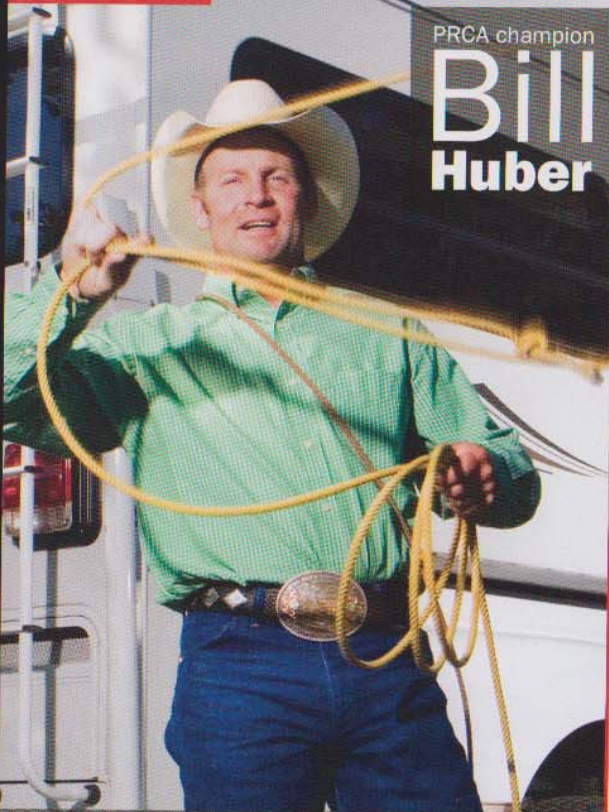
\* See footnotes for specs on page 4

Day Dreamer interior

living the  
**Lance  
life**

Lance

PRCA champion  
**Bill  
Huber**



PRCA Calf Roping Champion Bill Huber, wife Jackie, sons Justin and Cody (and several horses in-tow) have been living the Lance life for years – traveling over 250,000 miles to rodeos in their Lance.



“If that’s not a testimonial as to Lance’s quality and durability, well then, I don’t know what is,” says Bill. “And it’s very comfortable and convenient to travel in, too,” adds Jackie. “We love our Lance!”

# Lance 1181

## BASEMENT MODEL

Interior floor length 11'6"  
Interior height 6'8"  
Cabover interior headroom 44.5"\*  
Truck bed height 101.75"\*  
Exterior width 96"  
Overall exterior height 112.75"\*  
Fresh water tank 42 gallons  
Grey water tank 30 gallons  
Black water tank 35 gallons  
Propane 2 seven-gallon tanks  
Refrigerator 6 cubic feet –  
three-way power mode  
Furnace 20,000 BTUs  
Generator Optional  
Shower/toilet type Dry bath  
Queen cabover + dinette beds  
Standard  
Fold-down bunk bed Optional

## EXTENDED CABOVER ONLY

Exterior length 19'7"  
Center of gravity 39"\*  
Dry weight 3650 pounds\*



\* See footnotes for specs on page 4

DOMESTIC F-350/3500+ SERIES DUALY LONG BED



**Top-of-the-line.** The 1181 is an 11'6" truck camper with a fabulously large dry bath, lots of drawers and counter space, a huge insulated skylight and mirrored wardrobe in the cabover bedroom – and a double-door refrigerator, dinette and wardrobe on a full-wall slideout. There's also an optional roll-out pantry in the galley. With the most floor space of all our models, it's our only unit with a full-width



basement storage for long items like skis, snowboards and fishing poles. Any item up to 91 inches.







# Lance 1131

If you need the extra room for sleeping up to seven, the 11'6" Lance 1131 is a great family camper. With a dry bath, roadside slideout, side entry and rear fold-down tent, the 1131 is Lance's most spacious camper ever – with plenty of room in the cabover, dinette, rear tent and optional bunk beds. Everything you need for fun-filled weekends with the family – with the capability of towing all your outdoor toys.

## DOMESTIC F-350/3500+ SERIES DUALY LONG BED

### BASEMENT MODEL

- Interior floor length 11'6"
- Interior height 6'8"
- Cabover interior headroom 44.5"\*
- Truck bed height 101.75"\*
- Exterior width 96"
- Overall exterior height 112.75"\*
- Fresh water tank 35 gallons
- Grey water tank 35 gallons
- Black water tank 35 gallons
- Propane 2 seven-gallon tanks
- Refrigerator 6 cubic feet – three-way power mode
- Furnace 20,000 BTUs
- Generator Optional
- Shower/toilet type Dry bath
- Queen cabover + dinette beds Standard
- Fold-down bunk bed Optional
- Rear fold-down tent + bed Standard



### EXTENDED CABOVER ONLY

- Exterior length 20'2"
- Center of gravity 40"\*
- Dry weight 3695 pounds\*

\* See footnotes for specs on page 4



8







living the  
**Lance  
life**



Adventurer  
**Brad  
Christ**

Braving the challenging terrain of exotic locations in his '06 Lance 1191, Brad checks-in wherever he can find a Web connection. Here are a few shots from his recent expedition to South America. Log onto [LanceCamper.com](http://LanceCamper.com) for more photos.



# Lance 1055

## BASEMENT MODEL

Interior floor length 10'11"  
Interior height 6'8"  
Cabover interior headroom 44.5"\*  
Truck bed height 101.75"\*  
Exterior width 96"  
Overall exterior height 112.75"\*  
Fresh water tank 30 gallons  
Grey water tank 35 gallons  
Black water tank 33 gallons  
Propane 2 five-gallon tanks  
Refrigerator 6 cubic feet -  
three-way power mode  
Furnace 20,000 BTUs  
Generator Optional  
Shower/toilet type Dry bath  
Queen cabover + dinette beds  
Standard  
Drop-down overhead storage  
Standard

## EXTENDED CABOVER ONLY

Exterior length 19'0"  
Center of gravity 50"\*  
Dry weight 3150 pounds\*



✱ See footnotes for specs on page 4

DOMESTIC HEAVY-DUTY F-250/2500+ SERIES SINGLE-REAR-WHEEL LONG BED

Perfect for people that prefer a non-slideout camper with larger floorspace, the Lance 1055 is a 10'11" camper with an oversized dry bath. Also, a food bar and abundant counter space not found in today's campers - until now. The 1055's basement design offers increased storage and tank capacities - and features many upgrades for 2008. It's an ideal match for F-250/2500 Series (and larger) trucks.





# DOUBLE Lance 992 SLIDEOUT

DOMESTIC HEAVY-DUTY F-250/2500+ SERIES SINGLE-REAR-WHEEL LONG BED

**One's good. Two's great!** The 992 – Lance's double-slideout – for heavier duty, single-rear-wheel or dually trucks. The dry weight: 3310 pounds. And the 992's holding tank numbers are impressive, too. 45 gallons fresh. 40 grey. 30 black. With a forward center of gravity for better on-road balance

and handling, the galley – on its roadside slideout – provides an exceptional amount of counter space and storage. Plus, the area of the 992's wet bath is bigger than our largest dry bath models.



## BASEMENT MODEL

- Interior floor length 9'11"
- Interior height 6'8"
- Cabover interior headroom 44.5"
- Truck bed height 101.75"
- Exterior width 96"
- Overall exterior height 112.75"
- Fresh water tank 45 gallons
- Grey water tank 40 gallons
- Black water tank 30 gallons
- Propane 2 five-gallon tanks
- Refrigerator 6 cubic feet – three-way power mode
- Furnace 20,000 BTUs
- Generator Optional
- Shower/toilet type Wet bath
- Queen cabover + dinette beds Standard
- Fold-down bunk bed Optional

## EXTENDED CABOVER ONLY

- Exterior length 18'0"
- Center of gravity 52"
- Dry weight 3310 pounds\*



\* See footnotes for specs on page 4



Cool River interior

# Lance 981

The Lance 981 is a 9'11" basement-style camper with a large wet bath – and, next to the 992, is our most spacious nine-footer ever. It sports a roadside full-wall slideout with dinette and refrigerator. Large holding tanks and lots of sub-floor basement storage are key amenities. You'll enjoy ducted heat in the bathroom during your morning showers – and the mirrored wardrobe and huge insulated skylight (with ventilation screen and black-out shade) in the high-head-clearance cabover.



981/971 dinette bed conversion and deployed bunk bed



981 wet bath

## Introducing the new Lance 971.

The largest dry bath in the industry for a nine-foot camper – coupled with the popular Lance 981 floorplan.

971 bathroom looking left



971 bathroom looking right

### LANCE 981/LANCE 971 BOTH BASEMENT MODELS

- Interior floor length 9'11"
- Interior height 6'8"
- Cabover interior headroom 44.5"\*
- Truck bed height 101.75"\*
- Exterior width 96"
- Overall exterior height 112.75"\*
- Fresh water tank 35 gallons
- Grey water tank 30 gallons
- Black water tank 30 gallons
- Propane 2 five-gallon tanks
- Refrigerator 6 cubic feet – three-way power mode
- Furnace 20,000 BTUs
- Generator Optional

- 981 shower/toilet type Wet bath
- 971 shower/toilet type Dry bath

- Queen cabover + dinette beds Standard
- Fold-down bunk bed Optional

- LANCE 981**  
**EXTENDED CABOVER ONLY**
- Exterior length 18'0"
- Center of gravity 51"\*
- Dry weight 3225 pounds\*

- LANCE 971**  
**EXTENDED CABOVER ONLY**
- Exterior length 18'0"
- Center of gravity 50"\*
- Dry weight 3265 pounds\*

\* See footnotes for specs on page 4



981 interior in Nature's Envy



IDENTICAL FLOORPLANS EXCEPT:

981 Wet bath, and pantry and storage in galley

971 Dry bath and wall pantries in galley

971 galley with wall pantries inside the left wall



# Lance 971

# Lance 915

Modestly priced, the 9'6" wet bath Lance 915 is our most popular size of camper. This mid-sized model is ideal for most heavy-duty single-rear-wheel trucks where towing horse trailers, boats and other outdoor toys are a high priority. It includes

lots of storage along with a complete galley, large bath and generator capability – plus a removable counter for increased galley food prep and counter space. This 915 is equipped with SportsCamper™ options – which include unique upholstery and locking cabinet for guns and gear.



## NON-BASEMENT MODEL

- Interior floor length 9'6"
- Interior height 6'10"
- Cabover interior headroom 36"\*
- Truck bed height 92.5"\*
- Exterior width 93"
- Overall exterior height 104.5"\*
- Fresh water tank 30 gallons
- Grey water tank 13 gallons
- Black water tank 19 gallons
- Propane 2 five-gallon tanks
- Refrigerator 5 cubic feet – three-way power mode
- Furnace 20,000 BTUs
- Generator Optional
- Shower/toilet type Wet bath
- Queen cabover + dinette beds Standard
- Drop-down overhead storage Standard

## EXTENDED CABOVER ONLY

- Exterior length 17'6"
- Center of gravity 59"\*
- Dry weight 2505 pounds\*



\* See footnotes for specs on page 4



SportsCamper interior

# Lance 835

The 835 is an 8'6" wet bath long bed camper that allows for greater towing capacity because you can tow right off your truck's existing factory hitch. And with no overhang, you can pull those heavy loads like boats,

horses, snowmobiles, personal watercraft, cargo trailers, ATVs, motorcycles, etc. – without a hitch box extension. The 835 can comfortably sleep five with a dinette that converts into a bed and an optional overhead bunk. Also available with SportsCamper options.



#### NON-BASEMENT MODEL

- Interior floor length 8'6"
- Interior height 6'8"
- Cabover interior headroom 34"\*
- Truck bed height 90.5"\*
- Exterior width 93"
- Overall exterior height 102.5"\*
- Fresh water tank 30 gallons
- Grey water tank 8 gallons
- Black water tank 8 gallons
- Propane 2 five-gallon tanks
- Refrigerator 4 cubic feet – three-way power mode
- Furnace 18,000 BTUs
- Generator N/A
- Shower/toilet type Wet bath
- Queen cabover + dinette beds Standard
- Drop-down overhead storage Standard

#### EXTENDED CABOVER ONLY

- Exterior length 16'5"
- Center of gravity 68"\*
- Dry weight 2160 pounds\*



\* See footnotes for specs on page 4

Backcountry riders  
**John + Peggy**  
**Wyly**

# Lance 815

## NON-BASEMENT MODEL

- Interior floor length 8'6"
- Interior height 6'6"
- Cabover interior headroom 32.5\*\*
- Truck bed height 89.25\*\*
- Exterior width 86"
- Overall exterior height 96.25\*\*
- Fresh water tank 18 gallons
- Grey water tank 11 gallons
- Black water tank 10 gallons  
(shower waste drains into this tank – the only Lance model that does this)
- Propane 1 five-gallon tank
- Refrigerator 3 cubic feet – three-way power mode
- Furnace 18,000 BTUs
- Generator N/A
- Shower/toilet type Wet bath
- Queen cabover + dinette beds  
Standard
- Drop-down overhead storage  
Standard

## NON-EXTENDED CABOVER

- Exterior length 15'5"
- Center of gravity  
67" long bed\*/49" short bed\*
- Dry weight 1775 pounds\*

## EXTENDED CABOVER

- Exterior length 16'5"
- Center of gravity  
68" long bed\*/50" short bed\*
- Dry weight 1895 pounds\*



\* See footnotes for specs on page 4

The Lance 815 for 2008 is a lightweight, narrow-body, 8'6" wet bath camper for single-rear-wheel long bed trucks, or short beds with the dealer-installed modification skirt option. Fully self-contained, the 815 comes complete with a queen-size bed, galley, dinette, shower, toilet, water heater, forced-air furnace – and lots of room. Perfect for lighter duty trucks, it's low, light and sleek. The 815 is available with SportsCamper options, too.



"We can't wait for the weekends when John and I get to take our horses out for some great backcountry riding," says Peggy. And their Lance really helps them enjoy their rides. "We just go off anywhere the backroads take us, set-up camp and have a terrific time. For us, Lance is Total Freedom," adds John.





# Lance 825

## NON-BASEMENT MODEL

Interior floor length 8'6"  
Interior height 6'6"  
Cabover interior headroom 33"\*  
Truck bed height 82.25"\*  
Exterior width 86"  
Overall exterior height 89.25"\*  
Fresh water tank 30 gallons

**Shower with cassette toilet +  
water heater option** (Option 571)  
Grey water tank 14 gallons  
Black water tank 4.5 gallons

**Shower with marine toilet +  
water heater option** (Option 577)  
Grey water tank 14 gallons  
Black water tank 14 gallons

Propane 1 five-gallon tank  
Refrigerator 3 cubic feet –  
two-way power mode  
Furnace 12,000 BTUs  
Generator N/A  
Shower/toilet Optional  
Shower/toilet type Wet bath  
Queen cabover + dinette beds  
Standard  
Fold-down bunk bed Optional

## EXTENDED CABOVER ONLY

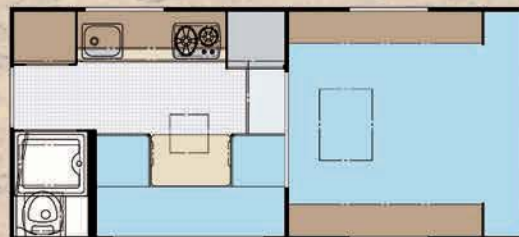
Exterior length 16'5"  
Center of gravity 45"\*  
Dry weight 1620 pounds\*

\* See footnotes for specs on page 4

Floorplan shown with  
optional shower and toilet  
in bathroom space



- 1 Optional shower and toilet in bathroom space.
- 2 Exterior compartment is large enough to house an owner-supplied portable gasoline-powered generator.
- 3 Rear exterior lamps provide exceptional outdoor lighting.



The all-new Lance 825 is exactly what we've been asked by many to build: a high-quality, no-frills truck camper with everything needed to enjoy the outdoors at a modest price. Light enough to fit a short bed Toyota Tundra or Nissan Titan – and complete enough to compliment a short bed dually. It's available either without a bathroom, or with† – and a short list of options make it easy to customize your rig to precisely how you desire.



† The bathroom space in the Lance 825 comes standard *without* a shower and toilet – and basically serves as a large closet or storage area. If you want a shower and toilet, you have two choices available as options:

### SHOWER WITH CASSETTE TOILET AND WATER HEATER OPTION (Lance option 571) – which includes:

- Six-gallon DSI (direct spark Ignition) water heater
- Enclosed, heated (ducted from furnace) and insulated 14-gallon grey water holding tank
- 4.5-gallon-capacity black water tank internally within cassette toilet
- Systems monitor panel with holding tank and battery indicators

### SHOWER WITH MARINE TOILET AND WATER HEATER OPTION (Lance option 577) – which includes:

- Six-gallon DSI (direct spark Ignition) water heater
- Enclosed, heated (ducted from furnace) and insulated 14-gallon grey and 14-gallon black water holding tanks
- Systems monitor panel with holding tank and battery indicators

A water heater isn't standard – and isn't available as a stand-alone option.





Cool River interior shown nicely equipped with options

# Lance 830

The all-new Lance 830 has a fresh, contemporary look-and-feel in a spacious floorplan available in three configurations: 1) side entry (very unique in a short bed camper – allowing easy camper access during towing), 2) side entry with rear fold-down tent (for additional sleeping capacity), and 3) rear entry with full-height wardrobe (for extra storage). The 830's clean, smart interior features a **distinctive Euro-style design** accented by angled wood cabinetry and bulkhead walls – cavernous, easy-access overhead galley bins – lots of interior storage – drawers behind Euro-styled doors – a sliding/detachable dinette table – an expansive galley with deep-basin circular sink – and a neo-round corner shower with a curved, sliding bathroom door. Fabulous!

**BASEMENT MODEL**

- Interior floor length 8'11"
- Interior height 6'6"
- Cabover interior headroom 41"\*
- Truck bed height 95.5"\*
- Exterior width 96"
- Overall exterior height 109.75"\*
- Shower + water heater Standard
- Fresh water tank 30 gallons
- Grey water tank 17 gallons

**Cassette toilet option** (Option 570)  
Black water tank 4.5 gallons

**Marine toilet option** (Option 576)  
Black water tank 14 gallons

- Propane 1 five-gallon tank
- Refrigerator 4 cubic feet – three-way power mode
- Furnace 20,000 BTUs
- Generator N/A

Shower/toilet type Wet bath  
Queen cabover + dinette beds Standard

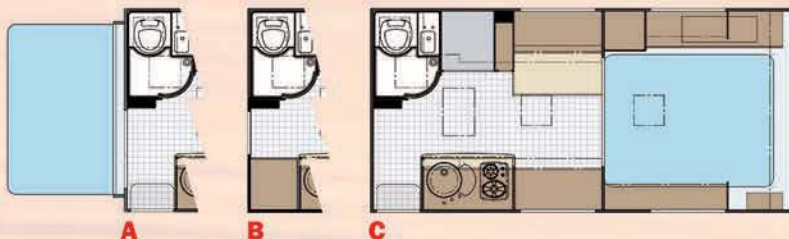
Fold-down bunk bed N/A  
Rear fold-down tent + bed Optional

**EXTENDED CABOVER ONLY**

- Exterior length 16'9"
- Center of gravity 43"\*
- Dry weight 2240 pounds\*



1 Retractable side-mounted ladder.  
2 Aerodynamic nose. 3 Rear fold-down tent option (see page 8 for photography).  
4 Dinette table – center dining position.  
5 Additional galley counter space – dinette table slides on track and attaches to wall.  
6 Additional sleeping accommodations – dinette table conversion (table detaches from track).  
7 Optional microwave stowed inside overhead galley bin.  
8 Full-opening, tinted acrylic thermopane Euro windows with integrated screens and pull-shades.  
9 Electric double entry step option.  
10 Extra-large capacity exterior storage compartment lined with a vacuum-formed housing – big enough to stow an owner-supplied portable gasoline generator.  
11 Rail-mounted exterior lighting.



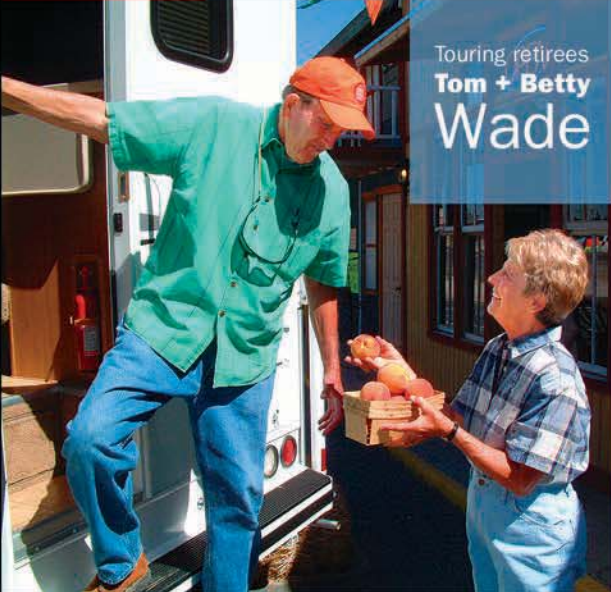
**ONE FLOORPLAN - THREE POSSIBLE CONFIGURATIONS**

- A Side entry door with rear fold-down tent
- B Rear entry door with full-height wardrobe
- C Side entry door

\* See footnotes for specs on page 4







Touring retirees  
**Tom + Betty**  
**Wade**

# Lance 845

## NON-BASEMENT MODEL

- Interior floor length 8'6"
- Interior height 6'8"
- Cabover interior headroom 34"\*
- Truck bed height 90.5"\*
- Exterior width 93"
- Overall exterior height 102.5"\*
- Fresh water tank 30 gallons
- Grey water tank 13 gallons
- Black water tank 19 gallons
- Propane 2 five-gallon tanks
- Refrigerator 4 cubic feet - three-way power mode
- Furnace 18,000 BTUs
- Generator Optional
- Shower/toilet type Wet bath
- Queen cabover + dinette beds Standard
- Drop-down overhead storage Standard

## EXTENDED CABOVER ONLY

- Exterior length 16'5"
- Center of gravity 47"\*
- Dry weight 2412 pounds\*



\* See footnotes for specs on page 4

One of our most popular models, the Lance 845 is an 8'6" wet bath short bed camper with generator capability. With a built-on bumper and step for easy access into the coach, the 845 is a short bed truck owner's dream. The extended cabover with queen-size bed is standard and the cabover's front cabinets provide extra storage. This camper also has larger capacity holding tanks and is available with Sports-Camper™ options.



After Tom's career in transportation for Sears, and Betty's as owner of a local Baskin-Robbins ice cream store, they now have the time to relax and enjoy life – sightseeing and shopping around the U.S. and Canada in their Lance.



"We love the maneuverability. We had a travel trailer. But a Lance really fits our lifestyle so much better now," says Tom. "One of the best things is we can park it in a regular car space!" laughs Betty.

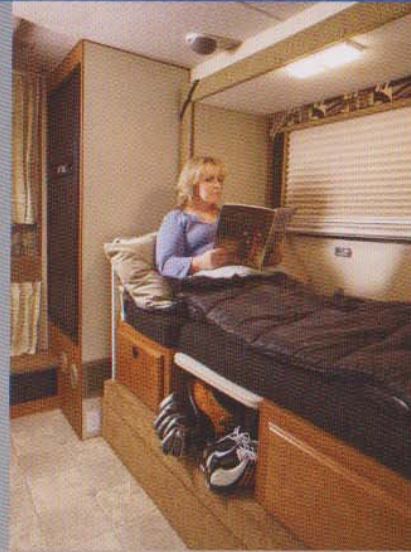


# Lance 861

The Lance 861 is a spacious 8'8" camper designed for heavy-duty short bed trucks - and provides the most floor space on a short bed truck. It features our popular wet bath and curbside slideout dinette.

The 861's basement design allows

for oversized holding tanks and an optional built-in generator to sustain those nice, long camping weekends. The cabover bed area features a generous wardrobe/closet - with excellent headroom as well.



24

### **BASEMENT MODEL**

- Interior floor length 8'8"
- Interior height 6'8"
- Cabover interior headroom 44.5"\*
- Truck bed height 101.75"\*
- Exterior width 96"
- Overall exterior height 112.75"\*
- Fresh water tank 30 gallons
- Grey water tank 30 gallons
- Black water tank 33 gallons
- Propane 2 five-gallon tanks
- Refrigerator 6 cubic feet -  
three-way power mode
- Furnace 20,000 BTUs
- Generator Optional
- Shower/toilet type Wet bath
- Queen cabover + dinette beds  
Standard
- Fold-down bunk bed Optional

### **EXTENDED CABOVER ONLY**

- Exterior length 16'9"
- Center of gravity 43"\*
- Dry weight 3070 pounds\*



\* See footnotes for specs on page 4



Structure Interior



# Lance 805

The Lance 805 is a narrow-body, 8'0" non-self-contained camper designed for domestic F-150s and 1500s – and import trucks with a minimum width of

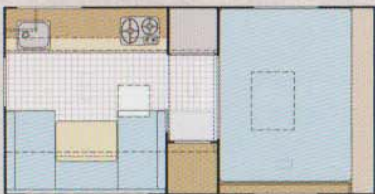
48 inches between wheel wells. The 805 is our most compact and lightest camper, with a clean and simple floorplan. And with a light weight and light price, this rig is perfect for those quick, getaway weekends. Designed primarily for short bed trucks, the 805 will fit long beds with modifications through your Lance dealer.

## NON-BASEMENT MODEL

- Interior floor length 8'0"
- Interior height 6'6"
- Cabover interior headroom 33\*\*
- Truck bed height 82.25\*\*
- Exterior width 86"
- Overall exterior height 89.25\*\*
- Fresh water tank 16 gallons
- Grey water tank N/A
- Black water tank N/A
- Propane 1 five-gallon tank
- Refrigerator 3 cubic feet –  
two-way power mode
- Furnace 12,000 BTUs
- Generator N/A
- Shower/toilet N/A
- Queen cabover + dinette beds  
Standard
- Fold-down bunk bed Optional

## NON-EXTENDED CABOVER ONLY

- Exterior length 14'0"
- Center of gravity  
69" long bed\*/51" short bed\*
- Dry weight 1400 pounds\*



The 805 is uniquely equipped for economy and light weight



IMPORT FULL-SIZE (TOYOTA TUNDRA/NISSAN TITAN) SHORT OR LONG BED WITH LONG BED MODIFICATIONS

DOMESTIC LIGHT-DUTY F-150/1500+ SERIES SHORT BED

DOMESTIC HEAVY-DUTY F-250/2500+ SERIES SHORT BED

DOMESTIC HEAVY-DUTY F-250/2500+ SERIES SINGLE-REAR-WHEEL LONG BED WITH LONG BED MODIFICATIONS

# BETTER-BUILT TRUCK CAMPERS SIMPLY BECAUSE THEY HAVE TO BE



Lance only builds truck campers, and we've been focused on nothing but for 43 years. If we don't build the best campers for our customers, we're out of business. It's just that simple.



# LanceLock™

LANCE-PROPRIETARY STRUCTURAL ASSEMBLY PROCESS FOR SLIDEOUT + BASEMENT MODELS



Camper sidewall



LANCE CERTIFIED 100% COMPLIANCE WITH ALL U.S. FEDERAL AND STATE ELECTRICAL, PLUMBING, HEATING AND FIRE SAFETY STANDARDS AS ESTABLISHED FOR RECREATIONAL VEHICLES AS A MEMBER IN GOOD STANDING WITH RVIA (RECREATION VEHICLE INDUSTRY ASSOCIATION).

**LanceLock cutaway cross-section with interlocking extrusions colored in red**



Camper floor

Sub-floor basement compartment area

**LanceLock** is our proprietary structural assembly process used in our slideout and basement models to solidly integrate our rugged, aircraft-grade, .062-inch-wall-thickness aluminum frameworks. It's called "LanceLock" because of the special interlocking aluminum extrusions - that deliver outstanding strength and durability.

**ENGINEERING FACT**

The LanceLock extrusions ensure a precise fit of all structural components. It requires far less fasteners and **ELIMINATES THE NEED FOR WOOD STICKS** that most other truck camper manufacturers have to put inside their thinner aluminum tubing to have something "solid" to sink screws into for framing.

Lock valuables behind a secure entry door with the long-item storage tray in basement models

Durable, mar-resistant interior paneling

Molded one-piece countertops in basement models

**full-walk-on EnergyStar® TPO roof**

An incredibly tough, seamless, marine-grade thermoplastic polyolefin one-piece roof



Fully laminated walls, floor, ceiling and cabover bed floor for years of dependability

200-pound capacity youth bunks with child-restraint netting

Automatic, dual-speed, 15,000/22,000-BTU furnace option in basement models

Ducted heat

Generous showers (6-foot, 250-pound man shown)

precision-fitted **SOLID block foam insulation** throughout

Cold outside?...it's warm everywhere inside the camper's living area with **ducted heat**. Additionally, we duct heat to the bath, holding tanks and cabover bed area in most models

**Lance aluminum tubing is Alodine®-coated** - a chemical treatment process that greatly enhances adhesion for lamination bonding, and provides superior corrosion protection to the metal.

**.062" Alodine-coated aluminum tubing**

Frames are welded within a precision jig system to ensure true-to-square, tight-tolerance assemblies.

**custom interlocking aluminum extrusions**

Lance's double-seal process tightly seals joints for added weather-proof protection

Superior corrosion protection with premium stainless steel and coated Everlube® fasteners

Electrical wiring is protected with tubing grommets inside the aluminum framing

The ultimate in stability and safety interconnecting steel corner mounting plates both outside and inside solidly anchor front jacks to the camper structure

No water intrusion with sealed tail lights

Rear jacks attached to bumper

Tinted windows reduce glare and reject the sun's harmful rays

Heavy-duty Phat™ ladder with stronger and larger diameter tubing

Prewiring for most electrical options allows easier installations of additional equipment later

Much easier entry into a camper with Lance's "well step" step-up-entry design

Powder-coated, non-rust aluminum bumper

Non-rust, stainless steel tie-down brackets with no paint to chip off





living the  
**Lance**  
**life**



Outdoorsman  
**Tony**  
Chachere

“I’m a third-generation outdoorsman and the grandson of legendary Louisiana Hall of Fame chef Tony Chachere. I enjoy our great outdoors many ways: hunting, fishing, cooking and camping. A true outdoorsperson knows that outdoor excursions can take many a twist and turn. I truly believe that Lance truck campers are the most versatile RVs on the market today...period! And here’s a picture of my wrapped Lance rig!”



Tony's Lance is wrapped with graphics promoting Catch-A-Dream Foundation - which fulfills the outdoor wishes of children aged 18 and younger who suffer from life-threatening illnesses. The uniqueness of Catch-A-Dream is that it not only allows a child to experience an outdoor adventure, but the entire family is there to share in the experience with the child, accompanied by a mentor from Catch-A-Dream.

	Non-basement models				Basement models										
	805	815	825	835	845	915	830	861	971	981	992	1055	1131	1181	1191
<b>THE LANCE LOOK™ INTERIOR DESIGN OPTIONS</b>															
011	•	•	•	•	•	•	•	•	•	•	•	•	•	•	•
012	•	•	•	•	•	•	•	•	•	•	•	•	•	•	•
013	•	•	•	•	•	•	•	•	•	•	•	•	•	•	•
014	•	•	•	•	•	•	•	•	•	•	•	•	•	•	•
<b>INTERIOR DECOR + EXTERIOR GRAPHICS OPTIONS</b>															
020	•	•	•	•	•	•	•	•	•	•	•	•	•	•	•
021	•	•	•	•	•	•	•	•	•	•	•	•	•	•	•
026	•	•	•	•	•	•	•	•	•	•	•	•	•	•	•
<b>INTERIOR OPTIONS</b>															
101	•	•	•	•	•	•	•	•	•	•	•	•	•	•	•
102	•	•	•	•	•	•	•	•	•	•	•	•	•	•	•
105	•	•	•	•	•	•	•	•	•	•	•	•	•	•	•
110	•	•	•	•	•	•	•	•	•	•	•	•	•	•	•
111	•	•	•	•	•	•	•	•	•	•	•	•	•	•	•
112	•	•	•	•	•	•	•	•	•	•	•	•	•	•	•
115	•	•	•	•	•	•	•	•	•	•	•	•	•	•	•
120	•	•	•	•	•	•	•	•	•	•	•	•	•	•	•
121	•	•	•	•	•	•	•	•	•	•	•	•	•	•	•
125	•	•	•	•	•	•	•	•	•	•	•	•	•	•	•
126	•	•	•	•	•	•	•	•	•	•	•	•	•	•	•
130	•	•	•	•	•	•	•	•	•	•	•	•	•	•	•
131	•	•	•	•	•	•	•	•	•	•	•	•	•	•	•
132	•	•	•	•	•	•	•	•	•	•	•	•	•	•	•
150	•	•	•	•	•	•	•	•	•	•	•	•	•	•	•
<b>CONVENIENCE OPTIONS</b>															
200	•	•	•	•	•	•	•	•	•	•	•	•	•	•	•
210	•	•	•	•	•	•	•	•	•	•	•	•	•	•	•
215	•	•	•	•	•	•	•	•	•	•	•	•	•	•	•
220	•	•	•	•	•	•	•	•	•	•	•	•	•	•	•
225	•	•	•	•	•	•	•	•	•	•	•	•	•	•	•
226	•	•	•	•	•	•	•	•	•	•	•	•	•	•	•
240	•	•	•	•	•	•	•	•	•	•	•	•	•	•	•
<b>APPLIANCE + ELECTRONICS OPTIONS</b>															
300	•	•	•	•	•	•	•	•	•	•	•	•	•	•	•
305	•	•	•	•	•	•	•	•	•	•	•	•	•	•	•
310	•	•	•	•	•	•	•	•	•	•	•	•	•	•	•
321	•	•	•	•	•	•	•	•	•	•	•	•	•	•	•
330	•	•	•	•	•	•	•	•	•	•	•	•	•	•	•
340	•	•	•	•	•	•	•	•	•	•	•	•	•	•	•
341	•	•	•	•	•	•	•	•	•	•	•	•	•	•	•
344	•	•	•	•	•	•	•	•	•	•	•	•	•	•	•
344	•	•	•	•	•	•	•	•	•	•	•	•	•	•	•
350	•	•	•	•	•	•	•	•	•	•	•	•	•	•	•
351	•	•	•	•	•	•	•	•	•	•	•	•	•	•	•
352	•	•	•	•	•	•	•	•	•	•	•	•	•	•	•
370	•	•	•	•	•	•	•	•	•	•	•	•	•	•	•
380	•	•	•	•	•	•	•	•	•	•	•	•	•	•	•
385	•	•	•	•	•	•	•	•	•	•	•	•	•	•	•

# 2008 Lance options





1



2



3



4



5



6



12



13



Stowed (slideout model example)



Deployed (slideout model example)

14



15



21



22



23



24

THE LANCE LIMITED TWO-YEAR WARRANTY

Lance provides a limited warranty to the original owner (purchaser) of a new 2008 Lance camper to be free of defects in materials, workmanship and structural integrity (under normal use with reasonable care and routine prescribed maintenance) for a period of two years from the date of purchase - subject to exclusions for vendor-made parts and components.

25



A

# selected highlights

- 1 Wraparound U-shaped sofa/bed option
- 2 Propane outlet
- 3 Solar panel
- 4 Battery pullout
- 5 Propane pullout
- 6 Rollout drawers
- 7 Pullout pantry
- 8 Long-item storage
- 9 Outside storage
- 10 Step versatility
- 11 Twin beds
- 12 Stereo/DVD, TV and speakers
- 13 Mirrored wardrobe
- 14 Bunks
- 15 Side awning
- 16 Full-width rear rollout awning
- 17 Swing-out jack brackets for dual-rear-wheeled trucks
- 18 Short bed modification skirts
- 19 Pass-through storage and centralized utility bay
- 20 Marine-grade, seamless, full-walk-on TPO roof with roof rack and heavy-duty Phat™ ladder
- 21 Electric jacks with remote control
- 22 Wet bath
- 23 Dry bath
- 24 Shower tub
- 25 The Lance Warranty





7



8  
Long-item storage available on basement models (except Lance 830)



9



10  
CENTER POSITION  
Step is centered underneath entry door



11  
TOWING POSITION  
Step shifts to right - allowing for tow hitch and easy entry



11



16



17



18



19



20



B



D



F



I



J



K



C



E



G



H



L



M



N

# selected accessories

**A** 30-cubic-foot Stor-Mor<sup>®</sup> storage pod **B** Breathable Tyvek<sup>®</sup> Lance camper cover **C** Lance camper dolly **D** Lance removable carpet kit **E** Lance Bed-Maid<sup>™</sup> sleep system (makes making a bed in a camper really easy!) **F** Auto-locating satellite dish **G** Lance cargo net (for models with fold-down storage) **H** Lance child-restraint system with bunk pads **I** Fan-Tastic<sup>®</sup> exhaust roof vent **J** Satellite dish with omni-directional TV antenna **K** Onan<sup>®</sup> Camp Power<sup>™</sup> propane-powered 2500-watt generator **L** Wireless ASA<sup>®</sup> rear-view camera ("backup camera") with built-in microphone **M** ASA rear-view camera ("backup camera") in-cab monitor **N** Portable low-pressure propane-fired BBQ grill

**Lance**  
FACTORY TRAINED  
SERVICE

dealer-installed  
equipment

Installation of these support equipment systems by your Factory Authorized Lance Dealer is highly recommended to ensure you receive **The Ultimate Ride**. Experience a dramatic improvement in the drivability and handling of your truck and camper package – in any weather, on any road.



ASA's rear-view camera/monitor maximizes safety

2

When not towing loads that require an extended hitch, included in Reese's Tow Beast system is a reducer sleeve, which you use to reconnect the hitch ball and draw bar to the receiver hitch.



The 48-inch Reese Tow Beast hitch box extension ("tow bar") is constructed with a heavy steel tube inside another steel tube – welded together – to dramatically increase strength and towing capacity.



Lance-exclusive cabover shocks ("cabover struts") have quick-release stainless steel connectors



Happijac Qwik-Load™ turnbuckle upgrades make anchoring your camper a snap



4



Within Air Lift's Super Duty air springs ("air bags") are the Lance-exclusive internal jounce bumpers

- 1 Reese Tow Beast™ Class V hitch/extension system increases your towing capabilities over your truck's factory-stock hitch.
- 2 ASA® rear-view camera/microphone and in-cab monitor lets you see – and hear – what's behind you.
- 3 Happijac® frame-mount anchoring system and centering guides assist with center alignment within the truck bed.
- 4 Happijac front and rear turnbuckles safely and securely attach and anchor the camper to your truck.
- 5 Air Lift® Super Duty™ air springs ("air bags") increase stability and levels the rig by transferring rear axle load forward.
- 6 Rancho RS-9000X™ front and rear shocks greatly improve ride in all weather and road conditions.
- 7 Air Lift Air-On-Demand™ in-cab control controls the air compressor and pressure for the air springs ("air bags") and shocks.
- 8 Lance Custom Design™ cabover shocks ("cabover struts") reduce the impact of up-and-down motion from irregular roads.

One of the many advantages of choosing a Lance truck camper as your RV is the ability to **tow all your toys**



When towing items behind larger Lance camper models, extending the hitch from the truck rearward to the camper bumper is necessary. (See chart at right for towing capacities of all models.)

The method Lance recommends involves a truck-mounted Class V receiver hitch and hitch box extension (as detailed in the 3-D view photos on the dealer-installed equipment section on the opposite page). A draw bar with hitch ball is inserted into the hitch box extension, the same way it would be inserted into the receiver hitch itself.

**Reese manufactures the Tow Beast Class V receiver hitch and hitch box extension specifically for truck camper applications. It replaces standard truck factory-stock receivers to allow for a greater towing capacity over factory-stock hitch systems.**

The other important benefit is that the Reese Tow Beast Class V system doesn't require you to attach the receiver hitch or hitch box extension to the camper. The hitch box extension can be in place when loading or unloading your camper. For very heavy loads, the hitch box extension in combination with a weight-equalizing hitch can be used. The chart at the lower right gives capacities for Reese's Tow Beast Class V hitch box extensions.

Always observe your truck's tow ratings – and the advice of your Factory Authorized Lance Dealer. Their service teams have the knowledge, experience and skill to outfit your rig correctly.



**Undercarriage of a Lance 1131 with a Reese Tow Beast hitch/extension system highlighted**

Trailer wiring harness plug

Trailer wiring harness

Safety chains

Hitch box extension ("tow bar")

Class V receiver hitch attached to underside of truck

**Tow capacities for Lance models requiring only a Reese Tow Beast Class V receiver hitch**

	Weight carrying/ tongue weight	Weight distributing/ tongue weight
<b>Lance 805</b> long bed	<b>12,000 pounds/</b> 1200 pounds	<b>14,000 pounds/</b> 1400 pounds
<b>Lance 815</b> long bed		
<b>Lance 835</b>		
<b>Lance 805</b> short bed	<b>6000 pounds/</b> 600 pounds	<b>8000 pounds/</b> 800 pounds

**Tow capacities for Lance models requiring both a Reese Tow Beast Class V receiver hitch and hitch box extension**

	Weight carrying/ tongue weight	Weight distributing/ tongue weight	Length of cut extension
<b>Lance 815</b> short bed	<b>6000 pounds/</b> 600 pounds	<b>8000 pounds/</b> 800 pounds	<b>24"*</b> <small>A universal heavy-duty 34" or 48" factory-stock Reese extension is cut down by a technical service professional to fit your particular application.</small>
<b>Lance 825</b>			
<b>Lance 830</b>			
<b>Lance 845</b> short bed			
<b>Lance 861</b> short bed			
<b>Lance 915</b>			
<b>Lance 971</b>			
<b>Lance 981</b>			
<b>Lance 992</b>			
<b>Lance 1055</b>			
<b>Lance 1131</b>			
<b>Lance 1181</b>			
<b>Lance 1191</b>			

\*Dealer modifications required. Consult your Factory Authorized Lance Dealer for professional technical advice and proper equipment installation. All above weights, dimensions and capacities are approximate values – and subject to change without notice. All measurements are based on an 8.75-inch standard drop ball mount. Some capacities may vary depending on vehicle application. Be safe – always consult with your Factory Authorized Lance Dealer beforehand.

Lance truck campers 2008



**Lance**

AMERICA'S FAVORITE TRUCK CAMPER + NORTH AMERICA'S LARGEST CAMPER MANUFACTURER | SINCE 1965