



**NORTHSTAR**®

**Quality Since 1961**





# FROM OUR FAMILY TO YOURS QUALITY SINCE 1961



Ralph "Tex" Willett  
Founder  
1908-1968



## WELCOME TO THE FINE "FAMILY" OF NORTHSTAR CAMPERS

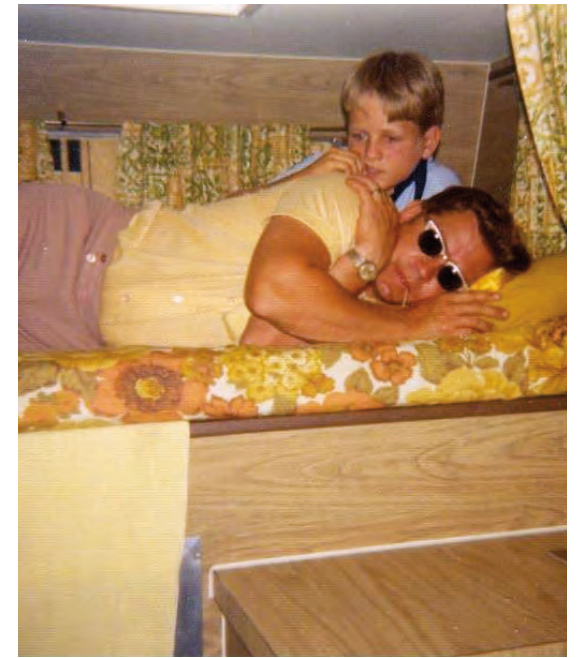
Owned and operated for over 50 years by a family in its third generation of manufacturing slide-in truck campers.



Truck Camping Pioneer Mom - Liz Willett 1938-2010



Start them early! Rex's father Robert, and youngest son  
cruising the plant.



Current president Rex Willett with Father,  
Robert Willett, circa 1973.

Much can be said on how continuity of ownership translates into excellence. Each generation, as committed as the previous to maintaining their competitive edge by constantly evaluating their performance and striving for improvement. Passing on knowledge gained from proven techniques and construction, while pursuing new and better methods.



600SS with Extended Cabover

### Std. Equipment all 600 & 700's

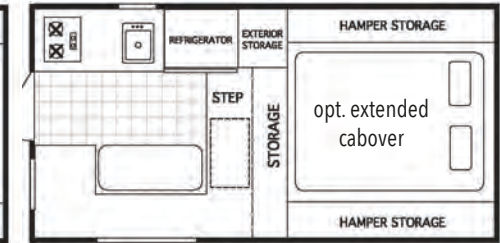
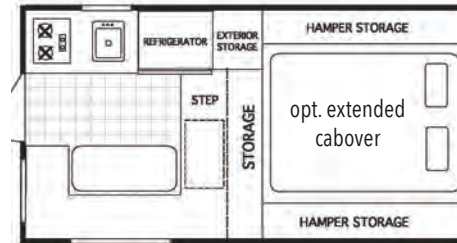
- Dometic 2 cf. 3-way Refrigerator
- 16,000 BTU Auto Ignition Furnace
- 4-Corner Mechanical Jacks
- 2 Burner Stove
- Single Sink with 12v Mini Pump
- 17 Gallon Fresh Water Tank
- City Water Inlet
- Marine Grade Ultra-Light Plywood
- Block Foam Insulation
- Insulated Floor
- Fiberglass Siding with Graphics
- 7-way Plug with Holder
- 30 AMP Power Cord with Adapter
- 25 AMP Power Converter
- Exterior Battery Box
- Interior & Exterior 110v Outlets
- LPG, Carbon Monoxide & Smoke Detector
- 20 Pound Lay-down LP Tank
- Pop-Out Pass-Thru Window
- Tinted Radius Slider Window
- Screened Entrance Door with Deadbolt
- Lift-Up Cabover Bed with 2 Gas Struts
- Innerspring Mattress
- Front Rubber Bumpers
- Exterior Lockable Storage
- 3 Exterior LED Patio Light
- Fire Extinguisher
- 12v Utility Receptacle
- Fantastic Fan w/ Thermostat
- LED Interior Lights
- Pedestal Table Leg System
- Large Folding Assist Handle
- Gas Strut Door Stop

### Additional Std. Equipment for 600SS & 700SS

- 3.7 Cubic Foot 3-way Dometic Refrigerator
- 5" Taller Sidewall and Screen Door
- Greater Seating, Standing, & Sleeping Height

MC600 600 SS

TC700 700SS



**SS Difference?** The SS versions have 5" taller sidewalls gaining a taller screened entrance door, larger refrigerator with freezer and greater interior seating and standing height. Deeper storage under the lift-up bed and more room above the mattress.



Available options by numbers: 2, 4, 7-10, 12, 13, 16-20, 24-28, 30, 31



## Differences & Features



Ready to sleep in! No need for extra support, just drop your camper and free your truck up to pull the boat or go sightseeing and explore. The strength is already built in! Be sure to compare!



Tri-lam vinyl canvas features large zippered enclosures with zippered tinted windows and screens. Vinyl interior and exterior means it is easy to clean, and no mold or mildew. Breathe easier!



With a two inch narrow profile Happijac jacks are smooth! 1500 lbs. of lift per jack and 34.5 inches of travel. Upgrade easily to wireless electric jacks on any model.



Versatility meets function with the optional Lagun table leg system. Adjusts up and down, rotates and swivels. Super rigid and perfect for meals, or emails to family and friends. Optional exterior mount bracket to take the table outside.



Northstar's rolled laminated roof does not have a topside molding edge and the clearance lights are also not in the body of the roof, eliminating hundreds of screw holes. Heavy cast corner and lower molding over-caps camper body by 1 1/2" acting as a rain-drip edge.



Maximum storage is standard on all Northstar campers. Northstar takes great pride in our neatness of gear installation and function. We invite you to compare our craftsmanship!

# NORTHSTAR

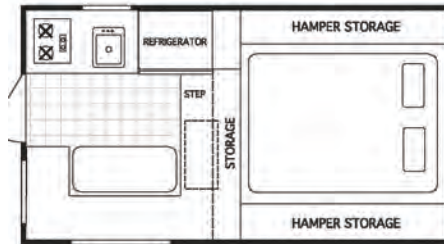




## TC 650 for Full- Size Short or Ultra Short Bed Trucks



Truck bumper is exposed on the 6'6" short-bed trucks allowing for ease of hitching trailers. 12v lead from all Northstars comes out the rear to conveniently plug into existing plug on truck.



**Available Y plug for towing.**

### TC650 Standard Equipment

- Dometic 3.7 cf 3-way Refrigerator
- 16,000 BTU Auto Ignition Furnace
- 4-Corner Mechanical Jacks
- 2 Burner Stove
- Single Sink with 12v Mini Pump
- 30 Gallon Fresh Water Tank
- City Water Inlet
- Marine Grade Ultra-Light Plywood
- Block Foam Insulation
- Insulated Floor
- Fiberglass Siding with Graphics
- 7-way Plug with Holder
- 30 AMP Power Cord with Adapter
- 25 AMP Converter w/ charger
- LPG, Carbon Monoxide & Smoke Detector
- 20 Pound Laydown LP Tank
- Pop-Out Pass-Thru Window
- Tinted Radius Crank-out Window
- Slider Galley Window with Screens
- Screened Entrance Door with Deadbolt
- Lift-Up Cabover Bed with 2 Gas Struts
- Innerspring Mattress
- Front Rubber Bumpers
- Exterior Lockable Storage
- Exterior Rear Lockable Wing Doors
- 3 Exterior LED Patio Lights
- Fire Extinguisher
- Interior Plastic Battery Box
- Interior & Exterior 110v Outlets
- 12v Utility Receptacle
- Fantastic Fan with thermostat
- LED Interior Lighting
- Pedestal Table Leg System
- Large Folding Assist Handle

Available options by numbers: 2, 4, 7-10, 12, 13, 16-20, 24-31

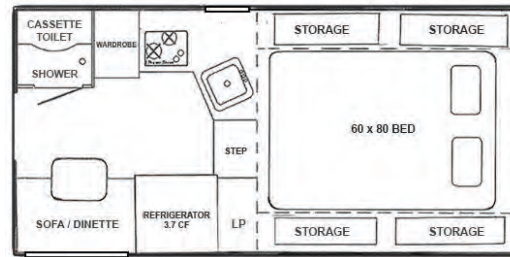
Photography includes Options



## 650SC FULL-SIZE ULTRA SHORT AND SHORT-BED TRUCKS COMPACT AND SELF-CONTAINED

### Standard Equipment

- Dometic 3.7 cf 3-way Refrigerator
- 16,000 BTU Auto Ignition Furnace
- 4-Corner Mechanical Jacks
- Glass Top 2 Burner Stainless Steel Stove
- Single Sink with 12v Demand Pump
- 20 Gallon Fresh Water Tank
- Interior Shower with Cassette Toilet
- Exterior Port Shower with Bypass
- 6 Gal Auto Ignition Water Heater w/ Bypass
- 13 Gal Gray Water Holding Tank
- City Water Inlet
- Marine Grade Ultra-Light Plywood
- Block Foam Insulation
- Insulated Floor
- Fiberglass Siding with Graphics
- 7-way Plug with Holder
- 30 AMP Twist Lock Hook-Up w/ Cord
- 25 AMP Converter w/ charger
- Extended Cabover w/ Side Cabinets
- LPG, Carbon Monoxide & Smoke Detector
- 20 lb. Stand Up Exchangeable LP Tank
- Pop-Out Pass-Thru Window
- Double Pane Dinette Window with Screen & Shades
- Slider Galley Window with Screen
- Screened Entrance Door with Deadbolt
- Lift-Up Cabover Bed with 2 Gas Struts
- 60x80 Innerspring Mattress
- Front Rubber Bumpers
- 3 Exterior LED Patio Lights
- Fire Extinguisher
- Interior Plastic Group 27 Battery Box
- Interior & Exterior 110v Outlets
- 12v Utility Receptacle
- Fantastic Fan with thermostat
- LED Interior Lighting
- Lagun Table Leg System
- 1/2 Wrap Around Rear w/ LED Lights
- Pre-wired for Rear Window AC
- Pre-framed for roof AC
- Large Folding Assist Handle
- Single lever faucet with pullout sprayer
- Push button aviation door catches



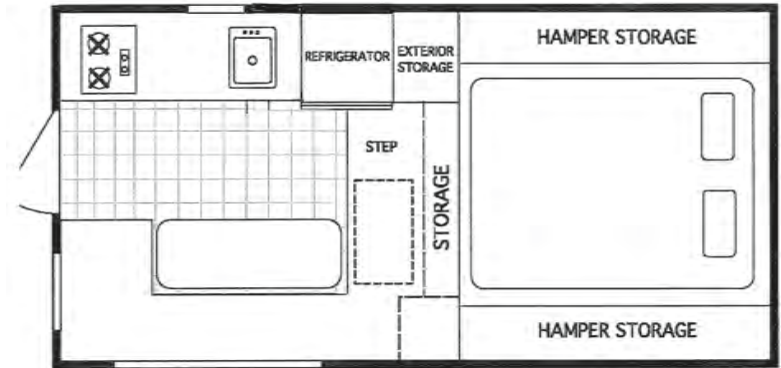
Available options by numbers: 5, 7, 9, 10, 13-19, 21, 24-26, 28, 30, 31





## TC800 Full- Size Long Bed or Short-Bed Trucks

*All the Features, All the Quality*



### Standard Equipment

- Dometic 3.7 cf 3-way Refrigerator
- 16,000 BTU Auto Ignition Furnace
- 4-Corner Mechanical Jacks
- 2 Burner Stove
- Single Sink with 12v Mini Pump
- 30 Gallon Fresh Water Tank
- City Water Inlet
- Marine Grade Ultra-Light Plywood
- Block Foam Insulation
- Insulated Floor
- Fiberglass Siding with Graphics
- 7-way Plug with Holder
- 30 AMP Power Cord with Adapter
- 25 AMP Converter w/charger
- LPG, Carbon Monoxide & Smoke Detector
- 20 lb. stand-up exchangeable LP tank
- Pop-Out Pass-Thru Window
- Tinted Radius Crank-out Window
- Slider Galley Window with Screen
- Screened Entrance Door with Deadbolt
- Lift-Up Cabover Bed with 2 Gas Struts
- Innerspring Mattress
- Front Rubber Bumpers
- Exterior Lockable Storage
- Exterior Rear Lockable Wing Doors
- 3 Exterior LED Patio Lights
- Fire Extinguisher
- Interior Plastic Battery Box
- Interior & Exterior 110v Outlets
- 12v Utility Receptacle
- Fantastic Fan with thermostat
- LED Interior Lighting
- 2 Pedestal Table Leg System
- Large Folding Assist Handle

Available options by numbers: 1, 3-13, 16-19, 21, 23-31

Photography includes options

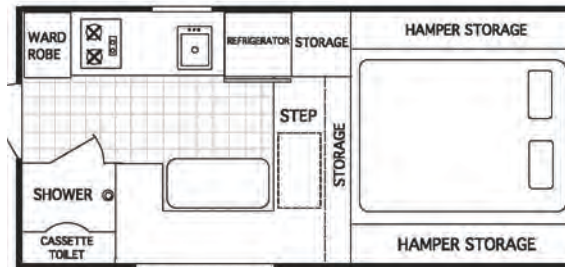




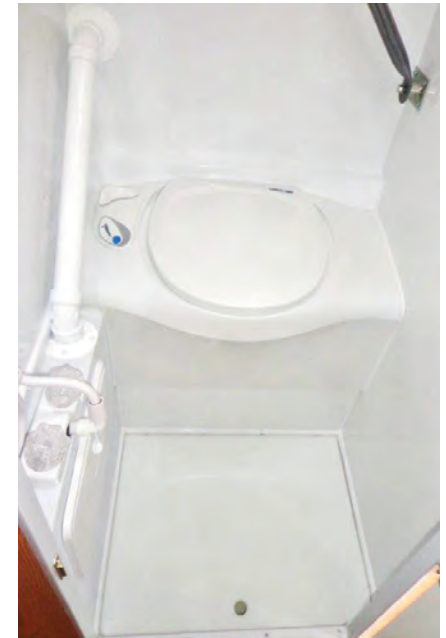
## 850SC Full-size Short-Bed and Long-Bed Trucks

### Standard Equipment

- Dometic 3.7 cf 3-way Refrigerator
- 16,000 BTU Auto Ignition Furnace
- 4-Corner Mechanical Jacks
- 2 Burner Stove
- Single Sink with 12v Mini Pump
- 30 Gallon Fresh Water Tank
- Interior Shower with Cassette Toilet
- Exterior Port Shower with Bypass
- 6 Gal Auto Ignition Water Heater w/ Bypass
- 13 Gal Gray Water Holding Tank
- City Water Inlet
- Marine Grade Ultra-Light Plywood
- Block Foam Insulation
- Insulated Floor
- Fiberglass Siding with Graphics
- 7-way Plug with Holder
- 30 AMP Power Cord with Adapter
- 25 AMP Converter w/ charger
- Extended Cabover w/ Side Cabinets
- LPG, Carbon Monoxide & Smoke Detector
- 20 lb. Stand-Up Exchangeable LP Tank
- Pop-Out Pass-Thru Window
- Tinted Radius Crank-out Window
- Slider Galley Window with Screen
- Screened Entrance Door with Deadbolt
- Lift-Up Cabover Bed with 2 Gas Struts
- 60 x 80 Innerspring Mattress
- Front Rubber Bumpers
- 3 Exterior LED Patio Lights
- Fire Extinguisher
- Interior Plastic Group 27 Battery Box
- Interior & Exterior 110v Outlets
- 12v Utility Receptacle
- Fantastic Fan with thermostat
- LED Interior Lighting
- Pedestal Table Leg System
- 1/2 Wrap Around Rear w/ LED Lights
- Large Folding Assist Handle
- Quad Torsion Lift System



Available options by numbers: 5-10, 14-19, 21-26, 28-31





# 950SC FULL-SIZE 3/4 TON LONG BEDS



## Standard Equipment

- Dometic 3.7 cf 3-way Refrigerator
- 16,000 BTU Auto Ignition Furnace
- 4-Corner Mechanical Jacks
- 2 Burner Stove
- Single Sink with Demand Pump
- 30 Gallon Fresh Water Tank
- Interior Shower with Cassette Toilet
- Exterior Shower with Bypass
- 6 Gallon Water Heater w/ Bypass
- 13 Gallon Gray Water Holding Tank
- City Water Inlet
- Marine Grade Ultra-Light Plywood
- Block Foam Insulation
- Insulated Floor
- Fiberglass Siding with Graphics
- 7-way Plug with Holder
- 30 AMP Power Cord with Adapter
- 25 AMP Converter w/ charger
- Extended Cabover w/ Side Cabinets
- LPG, Carbon Monoxide & Smoke Detector
- Lavatory Sink
- 20 lb. Laydown LP Tank
- Pop-Out Pass-Thru Window
- Tinted Radius Crank-out Window
- Slider Galley Window with Screens
- Screened Entrance Door with Deadbolt
- Lift-Up Cabover Bed with 2 Gas Struts
- 60 x 80 Innerspring Mattress
- Front Rubber Bumpers
- 3 Exterior LED Patio Lights
- Fire Extinguisher
- Interior Plastic Battery Box
- Interior & Exterior 110v Outlets
- 12v Utility Receptacle
- Fantastic Fan with thermostat
- LED Interior Lighting
- Pedestal Table Leg System
- Permanent Wrap Around Rear End w/ LED Tail Lights
- Large Folding Assist Handle
- Quad Torsion Lift System
- Generator Storage Compartment

Available options by numbers: 5-11, 14-19, 23-26, 28-31

## Northstar Terminology



### STANDARD REAR:

Available on 600's, 700's, TC650 & TC800's Long Bed Application. Left wing only on 600's & 700's. Recommended for TC650 when going on Ford Super-duty Short Bed.



### HALFWRAP:

Dress up the rear by adding taillights and side-wings. Side-wings can be extended forward for today's super ultra short beds like the photo on page 5.



### DETACHABLE WRAP-AROUND:

Available on 850SC: these dry storage boxes can be removed so your camper can adapt to a long bed truck.



### PERMANENT WRAP-AROUND:

Available on 700's, 650's, 800's, and the 850SC. Storage doors on each side, and allows installation for the optional Torklift bumper with swing down step.





## Cassette Toilet Truck C amper Perfect t



### So...you like to get off the grid?

The cassette is a built in toilet system with it's own water tank supply and waterpump. It has a waste capacity of 5 gallons and easily just slides out to dump just about anywhere. You can fill the 4 gallon fresh tank with antifreeze or windshield washer flui for cold weather camping and never worry about freezing! No wrestling with a sewer hose or paying to dump. When camping with the camper off the truck you can use the toilet as much as you want with no worry of re-loading the camper to dump your waste-tank. Totally off grid!



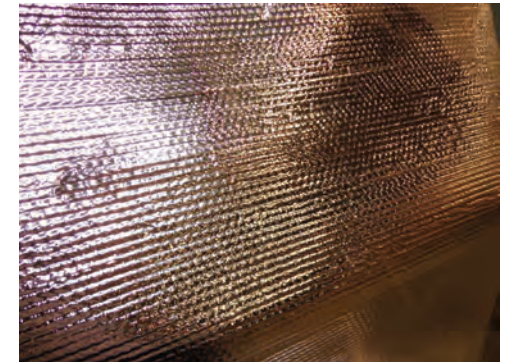
The Sub-Zero package consists of multiple upgrades featuring an insulated canvas with reflectiv insulation sewn in between two panels. The softwall material is not canvas, but rather three layers of modern material called Tri-Lam. The Tri-Lam vinyl is joined together so there's weather resistant vinyl on the inside and outside. With Tri-Lam you don't need to worry about putting the top down after a rainstorm. If mildew forms, the Tri-Lam wipes right off and looks brand new again.

The reflective foil on the inside of the Tri-Lam has an insulation factor of R-9. The foil faces into the camper interior to retain the heat in the winter, and the cool in the summer. The reflective foil also gives a slight improvement to the sound insulation inside the camper and a great improvement in darkening the interior for when an afternoon nap is on the after-lunch menu.

The second part of the Sub-Zero insulation package is the inside of the camper walls; Celotex foil faced insulation. In Sub-Zero equipped campers, we hand fit celotex in the floor, steps, sides walls, front and back of the camper.

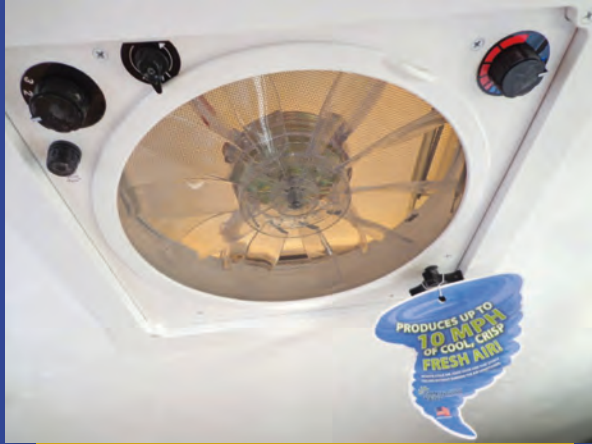
The Seitz acrylic, gas-filled thermal pane windows complete the Sub-Zero Package. Seitz windows are incredibly lightweight, recessed into the body of the camper, and include built in shades and screens. The ultimate in warmth, visibility, ventilation, and privacy.

If you want to prolong your camping season or just be more comfortable each day you camp, check out Northstar's new Sub-Zero option. It is definitely WARM!!





## MORE STANDARD FEATURES...GO NORTHSTAR!



Standard on all Northstars is the fantastic fan. Produces up to 10 mph of cool, crisp air! No need to tuck your enclosure when lowering the roof. Just turn the fan on, shut the rear door and the fan pulls the enclosure in like a full blown sail! Oh yeah!



Northstars lift system has been tried, tested and works easily. Cranks up & down from inside the coach keeping the system dry & functional for years of problem free use. Be sure to compare and put up and down a pop-up roof before you buy! A word to the wise should be sufficient



Every Northstar is screwed together at every single joint. Cabinets screwed in from the outside through the wall and also screwed together on the inside. Exterior plywood and low formaldehyde emission paneling make for superior strength & breathability. Northstars are made to last a long time and endure many miles and off road use. It's the Northstar way!



The extended cabover feature is standard on some models. Storage compartments exist on either side of the innerspring mattress. Tri-Lam vinyl canvas has zippered enclosures for neatness and privacy. Storage pockets have been sewn in on each side for your convenience. Let the relaxation begin!



The XB or extra bed option is great for more sleeping space, extra gear storage, or room for your pets.



Cool off with the optional rear window air conditioner. Optional Roof air conditioners are available on the 650SC, 850SC, and 950SC.

Specifications options, equipment, subject to change without notice.



## Northstar Pop-Up Specific tions

	Models to fit Smaller Trucks					Models to Fit Full Size Trucks				
	MC600	600SS	TC700	700SS	TC650	650SC	TC800	850SC	950SC	
Dry Weight Standard Build (Pounds)	1,148	1,208	1,261	1,321	1,345	1,610	1,450	1,735	1,910	
Closed Body Height	4'8"	5'3"	4'8"	5'3"	5'6"	5'8"	5'6"	5'6"	5'6"	
Interior Height-Open	6'4"	6'11"	6'4"	6'11"	6'7"	6'5"	6'7"	6'8"	6'7"	
Interior Height-Closed	4'3"	4'10"	4'3"	4'10"	4'11"	4'11"	4'11"	4'8"	4'11"	
Exterior Width	6'5"	6'5"	6'5"	6'5"	7'	7'	7'	7'	7'	
Overall Length Standard Build	10'5"	10'5"	11'6"	11'6"	11'	13'6"	12'4"	15'	16'4"	
Floor Length	6'3"	6'3"	7'	7'	6'8"	6'8"	8'	8'6"	10'	
Standard Cabover Bed Size	56" x 74"	56" x 74"	56" x 74"	56" x 74"	56" x 80"	N/A	56" x 80"	N/A	N/A	
Extended Cabover Bed Size	56" x 74"	56" x 74"	56" x 74"	56" x 74"	60" x 80"	60" x 80"	60" x 80"	60" x 80"	60" x 80"	
Dinette Bed Size	32" x 73"	32" x 73"	32" x 84"	32" x 84"	36" x 78"	N/A	36" x 75"	36" x 73"	36" x 79"	
Mattress to Ceiling Open	26"	26"	26"	26"	23"	24"	23"	29"	23"	
Mattress to Ceiling Closed	2"	2"	2"	2"	4"	6"	4"	4"	4"	
Fresh Water Capacity (Gallons)	17	17	17	17	30	20	30	30	30	
Gray Water Capacity (Gallons)	Optional 7.5	Optional 7.5	Optional 7.5	Optional 7.5	Optional 7.5	13	Optional 7.5	13	13	
Cassette Fresh Water Capacity (GLS)	N/A	N/A	N/A	N/A	N/A	4	N/A	4	4	
Cassette Black Water Capacity (GLS)	N/A	N/A	N/A	N/A	N/A	5	N/A	5	5	
Center of Gravity (Front to Rear)	22"	22"	22"	22"	23"	25"	30"	32"	33"	

All weights quoted are approx. and some are in lieu.

R.C. Willett Co. Inc, will not be held responsible for exceeding your vehicles GVWR.

**ALSO CHECK OUT NORTHSTARS COMPLETE LINE OF HARDSIDE CAMPERS!! [WWW.NORTHSTARCAMPERS.COM](http://WWW.NORTHSTARCAMPERS.COM)**



**NORTHSTAR**

**Simply the World's Finest - Quality Since 1961**

## Available Options By Number

Opt #	Description
1	DSI Water Heater, Exterior Shower, Bypass
2	As Above But With Manual Ignition
3	Freshwater Marine Toilet W/ Black Tank
4	7.5 Gallon Gray Water Holding Tank
5	Gray Water Holding Tank Hose Storage
6	Double Sink, 1 Cover. N/A With Option #8
7	Glass Top Stainless Steel Sink
8	Glass Top Stainless Steel 2 Burner Stove
9	Sub Zero, Insulated Tent, Window & Walls
10	Dometic CR1110 12V Compressor Fridge
11	3 Burner Stove W/ Oven
12	Prewire Rear Window Air Conditioner
13	Rear Window Air Conditioner 5K Btu
14	Pre-Wire Roof Air Conditioner
15	Roof Air Conditioner, Heat Strip
16	Pre-Wire Stereo W/ 2 Speakers & Antenna
17	AM/FM CD Stereo W/ 2 Speakers & Antenna
18	Amplified Tv Antenna
19	Cable TV Inlet
20	1/2 Wrap-Around Rear, LED Tail Lights
21	Full Wrap-Around Rear, LED Tail Lights
22	Detachable Wrap-Around Rear LED Lights
23	Storage Bumper W/ Step. Only W/ Opt #21
24	Pre-Wire For Electric Jacks
25	Electric Jacks. Includes Opt. #24
26	Overhead Cabinet Above Dinette
27	Extended Cabover
28	Riser Kit for taller bed rails and cab heights
29	Tip-Out Extra 60" Bed (Tc800 70")
30	MIDI Heki Insulated Exit Vent
31	Accent Rope Lights Under Outs

Acc	Accessories By Letter Description
A	4 Step Scissor Step
B	5 Step Scissor Step
C	6' Flamma Roll Out Rear Awning
D	8' Flamma Roll Out Side Awning
E	10' Flamma Roll Out Side Awning
F	Arctic Pak insulation Kit (call for availability)
G	Lagun Swing Away Table (Exchange Only)
H	Roof Rack (Std Build 6' Apart)
I	Dually Swing Out Brackets W/ Extensions
J	Foam Front Window Boot
K	Privacy curtain at foot of mattress
L	Rear Wall Ladder
M	Sink Cover
N	60 Watt Solar Panel W/ 30 Amp Controller
O	150 Watt Solar Panel W/ 30 Amp Controller
P	Northstar Pocket Pod
Q	Clear Entry Door Window W/ Snap Cover
R	Bunk Ladder
S	Fantastic Fan Vent Cover

Accessories can be added at anytime.

R.C. Willett Co. Inc. 3040 Leverage Rd. Cedar Falls, IA 50613