



Jay Flight SLX



Serial #: 1UJBC0BS6S1YR0242
Model: 287BHS JAY FLIGHT SLX TT

Model Year: 2025 Dealer Name: HILLTOP CAMPER AND RV
7324 NOVOTNY ROAD
BRainerd, MN 56401
USA

Standard Equipment

THE FOLLOWING ITEMS ARE STANDARD ON THIS MODEL

STANDARD EXTERIOR EQUIPMENT

- 30-amp service
- 8,000 BTU wall mount A/C (single axle models)
- Axles with electric, self-adjusting brakes and easy-lube hubs
- Exterior cable TV hookup
- Fully-integrated A-frame
- Galvanized-steel, impact resistant wheel wells
- Large exterior downspouts
- LP quick connect (outside grill prep)(N/A on Sport Edition)
- Magnum Truss™ Roof System
- Nitrogen filled radial tires
- PVC roofing membrane (limited lifetime warranty)

STANDARD INTERIOR EQUIPMENT

- 300 lb. rated single bunk beds
- 600 lb. rated double bunk beds
- Digital TV antenna
- Heavy-duty, 75 lb., full-extension, steel ball-bearing drawer guides
- High rise kitchen faucet
- Marine-grade toilet with foot flush
- Plywood bed platforms
- Queen mattress
- Residential-style hidden cabinet door hinges
- Residential-style kitchen countertops
- Shower curtain with curved shower track (select models)
- Solid hardwood cabinet doors with screwed stile construction and hidden hinges
- Vinyl flooring throughout
- Wood-trimmed mirror in bathroom

CUSTOMER VALUE PACKAGE (MANDATORY)

- 8 cu. ft. 12V refrigerator
- AM/FM/Bluetooth® stereo
- Backup camera prep
- Bathroom skylight
- Bathroom vent
- Detachable power cord
- Entry door with window and shade prep
- Fitted bed sheet
- G20 dark tinted privacy windows
- Keyed-Alike™ entry and baggage doors
- Large folding entry door grab handle
- LED interior and exterior lights
- Marine grade exterior stereo speakers
- Microwave oven
- On-demand tankless water heater
- Power awning with LED lights
- Range hood
- Solid Step® entry steps
- Spare tire with cover
- Stabilizer jacks
- Tub/shower surround
- Window shades

Optional Equipment

OPTIONAL EQUIPMENT INSTALLED ON THIS VEHICLE BY MANUFACTURER

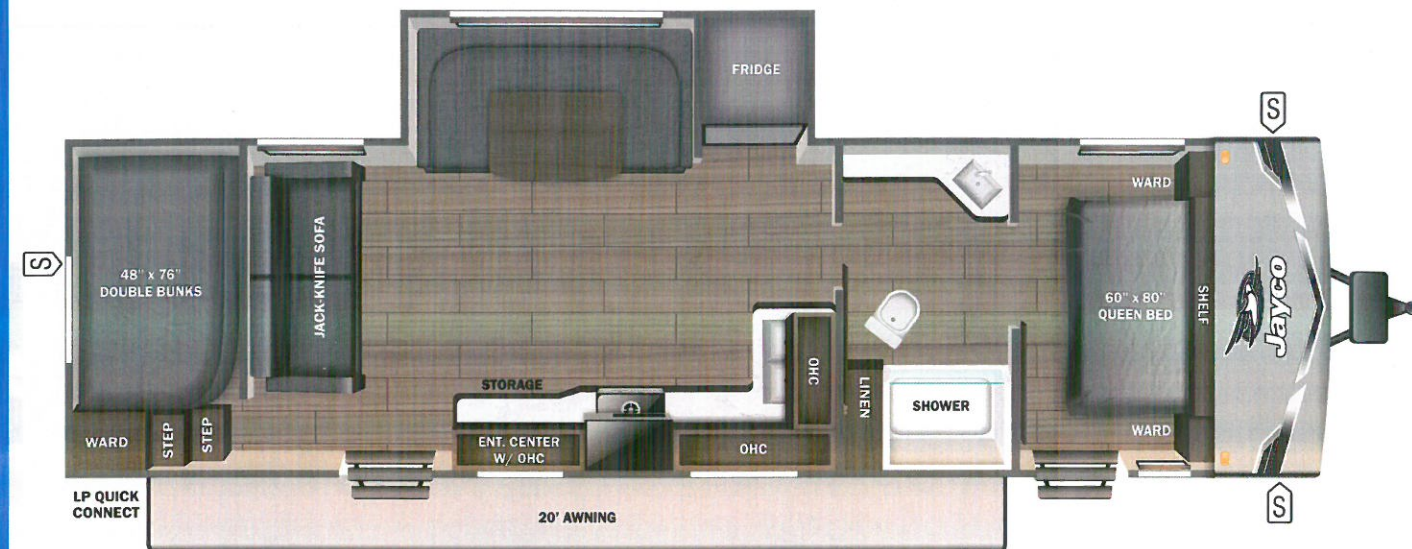
Base price	35,243.00
USA STANDARDS	n/c
CUSTOMER VALUE PACKAGE	5,250.00
OVERLANDER SOLAR PACKAGE	593.00
ELITE PACKAGE	1,943.00
15,000 BTU ROOF MOUNTED AC	300.00
NO 2ND AC	n/c
30 AMP SERVICE	n/c
JACK KNIFE SOFA	n/c

UNIT TOTAL 43,329.00

DEALER INSTALLED OPTIONS

Manufacturer's Suggested Retail Price \$43,329.00

TOTAL AMOUNT DOES NOT INCLUDE STATE AND LOCAL TAXES OR LICENSE FEES. THE PRICE SHOWN ABOVE MAY OR MAY NOT BE REPRESENTATIVE OF THE ACTUAL SELLING PRICE OF SIMILAR RECREATIONAL VEHICLES IN YOUR AREA.



UVW 6742 lbs **Sleeps** **Length** 34' 3.75"

DIMENSIONS

Exterior height:.....133.25"

Exterior width:.....95.75"

WEIGHTS

GVWR:.....7900

GAWR (front):.....3500

GAWR (rear):.....3500

Approx. Gross Cargo Carrying

Capacity (GCCC):.....1158

TIRES

Tire size (front):.....ST205/75R14D

Tire size (mid):.....

Tire size (rear):.....ST205/75R14D

Tire size (spare):.....ST205/75R14D

CAPACITIES

Fresh water tank (gals.):...52.00

Gray water tank (gals.):....39.00

Black water/toilet tank (gals.):.....39.00

Propane (lbs.):.....40

Propane (gals.):.....9

Water heater (gals.):.....0.25

SEATING & SLEEPING

Some dimensions may be rounded and may vary from the actual dimensions

***Weights may be estimated calculations and may vary from the actual weight

- refer to the vehicle weight labels for actual weights***

Floorplans, features and specifications are subject to change without notice.

2+3
YEAR | YEAR
LIMITED | STRUCTURAL
WARRANTY