



Jay Feather



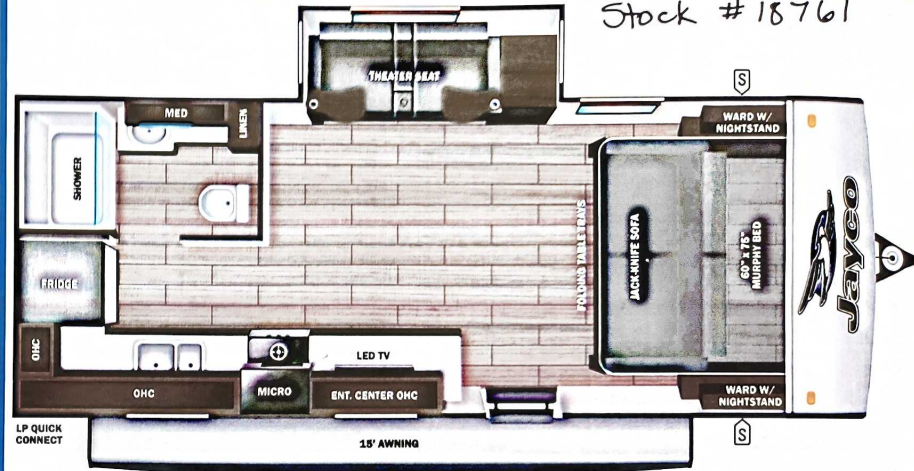
Serial #: 1UJBB0BK8S1J70184
 Model: 19MRK JAY FEATHER TT

Model Year: 2025 Dealer Name: HILLTOP CAMPER AND RV
 1240 LAKE SHADY AVE. SOUTH
 ORONOCO, MN 55960
 USA

Manufacturer's Suggested Retail Price \$49,778.00

TOTAL AMOUNT DOES NOT INCLUDE STATE AND LOCAL TAXES OR LICENSE FEES. THE PRICE SHOWN ABOVE MAY OR MAY NOT BE REPRESENTATIVE OF THE ACTUAL SELLING PRICE OF SIMILAR RECREATIONAL VEHICLES IN YOUR AREA.

Stock # 18761



Standard Equipment

THE FOLLOWING ITEMS ARE STANDARD ON THIS MODEL AT NO EXTRA CHARGE

Optional Equipment

OPTIONAL EQUIPMENT INSTALLED ON THIS VEHICLE BY MANUFACTURER

STANDARD EXTERIOR EQUIPMENT

- 1.5 in. fresh water drain valve
- 18 in. rear roof ladder - factory installed
- 2 in. Stronghold VBL™ floor with 2 lb. density foam
- Stronghold VBL™ walls with double-sided Azdel composite (sidewalls, rear walls and slide out boxes)
- Aerodynamic, rounded front profile with aluminum framing
- American-made Norco Z-frame with integrated A-frame
- Automotive-style aluminum rims
- Battery quick-disconnect
- Dark-lit safety-glass windows
- Exterior TV bracket with 120V and cable hook-ups
- Front diamond plating with Azdel backing
- Front molded decorative cap (select models)
- Galvanized steel and impact resistant wheel wells
- Keyed-Alike™ locking system
- Magnum Truss™ Roof System
- Marine grade exterior speakers
- Outdoor camp kitchen with galvanized steel bases (select models)
- PVC roofing membrane (limited lifetime warranty)
- Swing-out entry door assist handle

JAY SPORT PACKAGE (MANDATORY)

- 11 cu. ft. 12V fridge
- App monitored TPMS
- Climate Shield (zero to 100 degree tested weather insulation package)
- Front slam-latch baggage doors
- Invasion appliance package
- LCI Solid Step fold-down aluminum tread steps on main entry door
- LED smart TV
- MAXXAIR® power roof vent (main living area)
- Modern graphics package with dual-colored sidewall
- Overlander 1 Solar Package: (1) 200W solar panel and 30-amp digital controller
- Porcelain toilet-flush toilet
- Stainless steel kitchen & bathroom sink

STANDARD INTERIOR EQUIPMENT

- 4 in. high-density dinette cushions with vinyl backing
- 4 in. soft-touch bunk mats (select models)
- 60 x 80 in. residential queen beds (60 x 76 in. Murphy bed models)
- 75 lb. full extension drawer guides
- Bathroom skylight
- Decorative backsplash
- Decorative roller shades with reflective barrier
- Directional and closable A/C vents
- Gas-strutted under bed storage (most models)
- Handcrafted, hardwood door/drawer fronts
- Hidden-hinged cabinet doors
- High output auto-ignition LP gas furnace
- LED lighting throughout
- Plywood dinette, bed, bunk and shower/tub bases
- Powered roof vents in bathroom and main bedroom (most models)
- Residential style seamless countertops throughout
- Residential vinyl flooring throughout
- Screwed and glued cabinet stiles
- USB charging ports (multiple locations throughout)

CUSTOMER VALUE PACKAGE (MANDATORY)

- Radial tires with self-adjusting electric brakes
- 13,500 BTU roof-mounted A/C
- 20 lb. LP gas bottles with auto-ignition and ABS cover
- 55 gal. fresh water tank
- Automotive-style aluminum rims
- Black tank flush
- Detachable power cord
- Inverter pre-wire (2 bedroom, nightstand outlets, main TV and outlet for outside kitchen fridge)
- Max-length power awning with LED light
- On-demand 60,000 BTU water heater
- Power tongue jack
- Rear 2 in. receiver prep
- Rock Solid Stabilizer System
- Side and rear back-up camera prep
- Under-mount spare tire

Base price	40,028.00
USA STANDARDS	n/c
CUSTOMER VALUE PACKAGE	6,000.00
JAY SPORT PACKAGE	3,750.00
OVERLANDER 1 SOLAR PACKAGE	n/c
13,500 BTU AC	n/c
NO FIREPLACE	n/c
20# LP GAS BOTTLES	n/c

UNIT TOTAL **49,778.00**

DEALER INSTALLED OPTIONS

lb U**V****V**
5050 lbs

Sleeps

Length
23' 3.88"

DIMENSIONS

Exterior height:.....128.25"
 Exterior width:.....96.00"

WEIGHTS

GVWR:.....6400
 GAWR (front):.....3500
 GAWR (rear):.....3500
 Approx. Gross Cargo Carrying Capacity(GCCC):.....1350

TIRES

Tire size (front):.....ST205/75R14D
 Tire size (mid):.....
 Tire size (rear):.....ST205/75R14D
 Tire size (spare):.....ST205/75R14D

CAPACITIES

Fresh water tank (gals.):...55.00
 Gray water tank (gals.):...38.00
 Black water/toilet tank (gals.):...30.50
 Propane (lbs.):.....40
 Propane (gals.):.....9
 Water heater (gals.):.....0.25

SEATING & SLEEPING

Some dimensions may be rounded and may vary from the actual dimensions

***Weights may be estimated calculations and may vary from the actual weight

- refer to the vehicle weight labels for actual weights***

Floorplans, features and specifications are subject to change without notice.

