



Jay Flight SLX



Serial #: 1UJBC0BL5R1YZ0817
 Model: 210QB JAY FLIGHT SLX TT

Model Year: 2024 Dealer Name: Hilltop Camper and RV
 5701 STATE HIGHWAY 29 S
 ALEXANDRIA, MN 56308
 USA

Manufacturer's Suggested Retail Price \$33,156.00

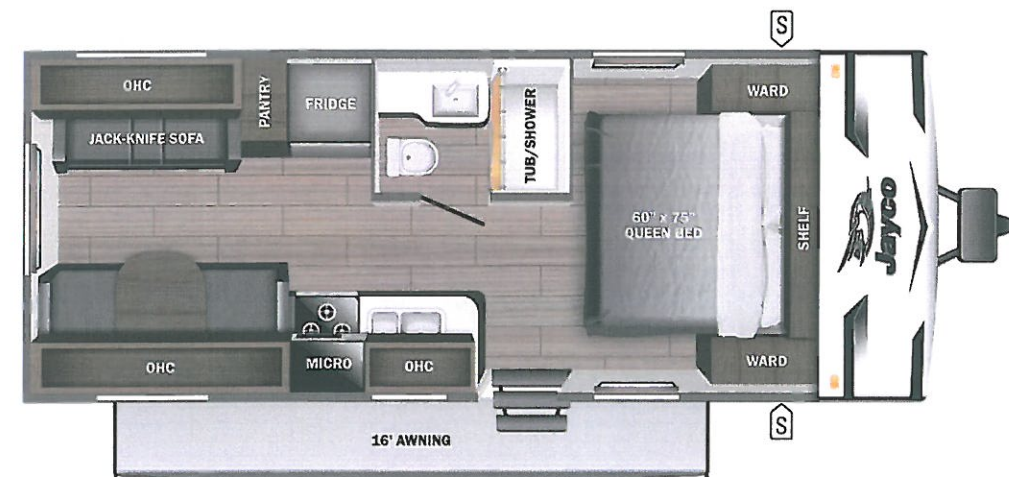
TOTAL AMOUNT DOES NOT INCLUDE STATE AND LOCAL TAXES OR LICENSE FEES. THE PRICE SHOWN ABOVE MAY OR MAY NOT BE REPRESENTATIVE OF THE ACTUAL SELLING PRICE OF SIMILAR RECREATIONAL VEHICLES IN YOUR AREA.

Standard Equipment

Optional Equipment

THE FOLLOWING ITEMS ARE STANDARD ON THIS MODEL AT NO EXTRA CHARGE

OPTIONAL EQUIPMENT INSTALLED ON THIS VEHICLE BY MANUFACTURER



- EXTERIOR**
- Axles with electric, self-adjusting brakes and easy-lube hubs
 - Fully-integrated A-frame
 - Galvanized-steel, impact resistant wheel wells
 - Magnum Truss™ Roof System
 - PVC roofing membrane (limited lifetime warranty)
 - Large exterior downspouts
 - 30-amp service
 - Exterior cable TV hookup
 - LP quick connect (outside grill prep)
 - 5,000 BTU wall mount A/C (single axle models)
 - Nitrogen filled radial tires

- INTERIOR**
- Solid hardwood cabinet doors with screwed stile construction and hidden hinges
 - Vinyl flooring throughout
 - Digital TV antenna
 - Residential-style kitchen countertops
 - High rise kitchen faucet
 - Heavy-duty, 75 lb., full-extension, steel ball-bearing drawer guides
 - Plywood bed platforms
 - Queen mattress (select models)
 - 300 lb. rated single bunk beds
 - 600 lb. rated double bunk beds
 - Marine-grade toilet with foot flush
 - Shower curtain with curved shower track (select models)
 - Wood-trimmed mirror in bathroom

- CUSTOMER VALUE PACKAGE (Mandatory)**
- Solid Step® entry steps
 - On-demand tankless water heater
 - Power awning with LED lights
 - Marine grade exterior stereo speakers
 - Stabilizer jacks
 - Spare tire with cover
 - Keyed-Alike™ entry and baggage doors
 - Large folding entry door grab handle
 - Window shades
 - Range hood
 - 8 cu. ft. 12V refrigerator
 - Microwave oven
 - Fitted bed sheet (N/A 154BH)
 - Bathroom skylight
 - Tub/shower surround
 - Backup camera prep
 - Detachable power cord
 - G20 dark tinted privacy windows
 - Bathroom vent
 - LED interior and exterior lights
 - Entry door with window and shade prep
 - AM/FM/Bluetooth® stereo

Base price	27,906.00
USA STANDARDS	n/c
CUSTOMER VALUE PACKAGE	5,250.00
13,500 BTU ROOF MOUNTED AC	n/c
METAL SIDEWALL	n/c
NO ENCLOSED UNDERBELLY	n/c
STANDARD RADIAL TIRES	n/c

UNIT TOTAL **33,156.00**

DEALER INSTALLED OPTIONS

UVW 4320 lbs **Sleeps** **Length** 25' 8"

DIMENSIONS	CAPACITIES
Exterior height:.....126.00"	Fresh water tank (gals.):...52.00
Exterior width:.....96.00"	Gray water tank (gals.):...39.00
WEIGHTS	Black water/toilet tank (gals.):.....33.00
GVWR:.....5500	Propane (lbs.):.....40
GAWR (front):.....3500	Propane (gals.):.....9
GAWR (rear):.....3500	Water heater (gals.):.....0.00
Approx. Gross Cargo Carrying Capacity(GCCC):.....1180	SEATING & SLEEPING
TIRES	
Tire size (front):.....ST205/75R14D	
Tire size (mid):.....	
Tire size (rear):.....ST205/75R14D	
Tire size (spare):.....ST205/75R14D	

Some dimensions may be rounded and may vary from the actual dimensions
 Weights may be estimated calculations and may vary from the actual weight - refer to the vehicle weight labels for actual weights
 Floorplans, features and specifications are subject to change without notice.

