



White Hawk



Serial #: 1UJBK0BRXR14K0242
 Model: 27RB WHITE HAWK TT

Model Year: 2024 Dealer Name: HILLTOP CAMPER AND RV
 1240 LAKE SHADY AVE. SOUTH
 ORONOCO, MN 55960
 USA

Standard Equipment

THE FOLLOWING ITEMS ARE STANDARD ON THIS MODEL
 AT NO EXTRA CHARGE

- EXTERIOR**
- Aerodynamic, rounded front profile with aluminum framing
 - Stronghold VBL™ walls with double-sided Azdel composite (sidewalls, rear walls and slide out boxes)
 - Magnum Truss™ Roof System
 - American-made frame with integrated A-frame
 - Swing-out entry door assist handle
 - Exterior TV bracket with 120V and cable hook-ups
 - Outdoor camp kitchen with galvanized steel bases (select models)
 - Slam latches on front pass-through storage doors
 - Marine grade exterior speakers with blue LED accent lighting
 - Galvanized steel and impact-resistant wheel wells
 - 30-amp service
 - Rock Solid Stabilizer System
 - Mounted camera bracket for pre-wired side and rear backup prep
 - Keyed-Alike™ lock system
 - Detachable power cord
 - Battery quick disconnect
 - Black tank flush
 - Automotive-style aluminum rims
 - Spare tire with cover
 - Inverter pre-wire (2 bedroom nightstand outlets, main TV and outlet for outside kitchen fridge)
 - Bumper-mount bracket for 17 in. griddle
 - 1.5 in. fresh water drain valve
 - 2 in. Stronghold VBL™ floor with 2 lb. density foam
 - Factory installed rear roof ladder
 - Modern graphics package with dual-colored sidewall
 - Outside shower (only on models without outside camp kitchen)
 - PVC roofing membrane (limited lifetime warranty)
- LUXURY PACKAGE (Mandatory)**
- Climate Shield™ 0-100" tested weather insulation package
 - Front molded fiberglass cap with automotive-style windshield and blue LED accent light strips
 - Dark tinted, frameless safety glass windows
 - LCI Solid Step fold-down aluminum tread steps on main entry door
 - Overlander 1 Solar Package: (1) 200W solar panel and 30-amp digital controller
 - Kitchen skylight with shade
 - MAXXAIR® power roof vent (main living area)
 - Dual-hinge 10 cu. ft. 12V fridge

- INTERIOR**
- Barneled interior ceiling up to 81 in. of interior height
 - LED lighting throughout
 - Electric fireplace
 - Directional and closeable A/C vents
 - Plywood dinette, bed, bunk and shower/tub bases
 - Residential vinyl flooring throughout
 - High output auto-ignition LP gas furnace
 - Handcrafted, hardwood door/drawer fronts
 - Decorative backsplash
 - 75 lb. full extension drawer guides
 - 60 in. x 80 in. queen bed (60 in. x 75 in. in Murphy bed models)
 - 4 in. Teddy Bear soft-touch bunk mats (select models)
 - Powdered roof vents in bathroom and main bedroom (most models)
 - Decorative roller shades with reflective backer
 - 4 in. high-density dinette cushions with vinyl backing
 - Bathroom skylight
 - Gas-structed under bed storage (most models)
 - Hidden-hinged cabinet doors
 - Residential style kitchen countertops
 - Screwed and glued cabinet stiles
 - USB charging ports (multiple locations throughout)

- CUSTOMER VALUE PACKAGE (Mandatory)**
- American-made nitro-filled Goodyear® radial tires with self-adjusting brakes (made in the USA)
 - On-demand 60,000 BTU water heater
 - 55 gal. fresh water tank
 - 30 lb. LP gas bottles with auto-regulator and ABS stop
 - Power tongue jack
 - 39 or 50 in. Smart LED TV
 - 15,000 BTU roof-mounted A/C
 - AM/FM/Bluetooth® stereo with roof-mounted speakers
 - Oven with 3-burner recessed cooktop with glass cover
 - Microwave
 - Porcelain foot flush toilet
 - Showers with solid glass enclosures
 - Bathroom skylight
 - Max-length power awning with LED light

Optional Equipment

OPTIONAL EQUIPMENT INSTALLED ON THIS VEHICLE
 BY MANUFACTURER

Base price	54,801.00
USA STANDARDS	n/c
CUSTOMER VALUE PACKAGE	6,000.00
LUXURY PACKAGE	3,000.00
OVERLANDER 1 SOLAR PACKAGE	n/c
NO JAYCOMMAND CONTROL SYSTEM	n/c
NO 2ND AC	n/c
30 AMP SERVICE	n/c
FIREPLACE	443.00
ELECTRIC STABILIZER JACKS	638.00
ROOF LADDER (STD)	n/c
THEATER SEATING W/TABLE TRAYS	495.00
DINETTE	n/c
QUEEN BED	n/c

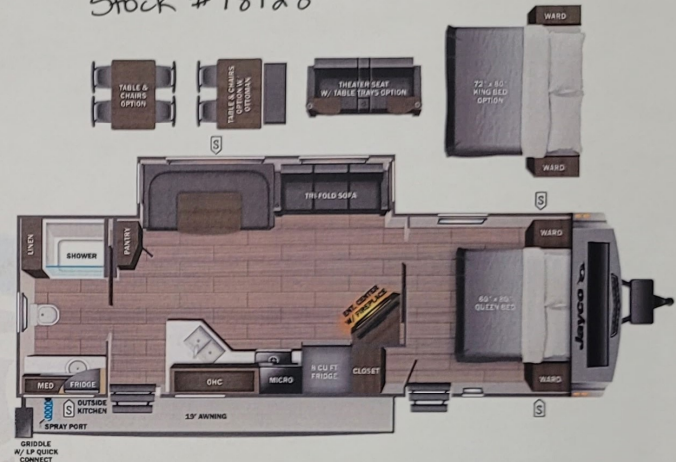
UNIT TOTAL **65,377.00**

DEALER INSTALLED OPTIONS

Manufacturer's Suggested Retail Price \$65,377.00

TOTAL AMOUNT DOES NOT INCLUDE STATE AND LOCAL TAXES OR LICENSE FEES. THE PRICE SHOWN ABOVE MAY OR MAY NOT BE REPRESENTATIVE OF THE ACTUAL SELLING PRICE OF SIMILAR RECREATIONAL VEHICLES IN YOUR AREA.

Stock # 18128



UVW
6983 lbs



Sleeps



Length
32' 9.63"

DIMENSIONS

Exterior height:.....135.63"

Exterior width:.....96.00"

WEIGHTS

GVWR:.....8000

GAWR (front):.....4400

GAWR (rear):.....4400

Approx. Gross Cargo Carrying Capacity (GCCC):.....1017

TIRES

Tire size (front):.....ST225/75R15E

Tire size (mid):.....

Tire size (rear):.....ST225/75R15E

Tire size (spare):.....ST225/75R15E

CAPACITIES

Fresh water tank (gals.):...55.00

Gray water tank (gals.):...61.00

Black water/toilet tank (gals.):...30.50

Propane (lbs.):...60

Propane (gals.):...14

Water heater (gals.):...0.25

SEATING & SLEEPING

Some dimensions may be rounded and may vary from the actual dimensions
 Weights may be estimated calculations and may vary from the actual weight - refer to the vehicle weight labels for actual weights
 Floorplans, features and specifications are subject to change without notice.

