



Seneca

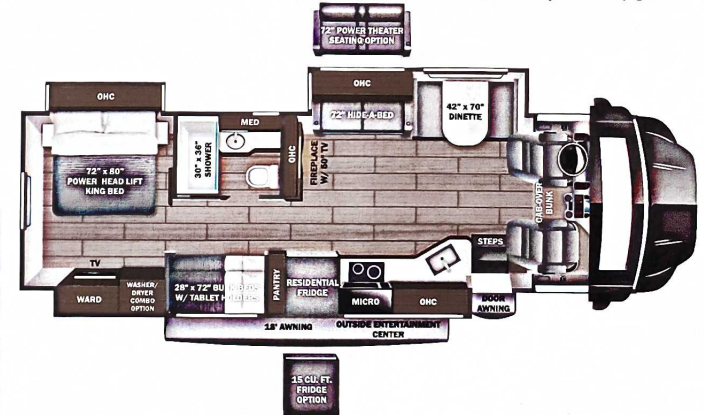


Serial #: 1UJNJCBU0R1HL4068
 Model: 37L SENECA MHC
 VIN#: 4UZADVFC1RCVH4245
 Model Year: 2024 Dealer Name: HILLTOP CAMPER AND RV
 1240 LAKE SHADY AVE. SOUTH
 ORONO, MN 55960
 USA

Manufacturer's Suggested Retail Price \$352,973.00

TOTAL AMOUNT DOES NOT INCLUDE STATE AND LOCAL TAXES OR LICENSE FEES. THE PRICE SHOWN ABOVE MAY OR MAY NOT BE REPRESENTATIVE OF THE ACTUAL SELLING PRICE OF SIMILAR RECREATIONAL VEHICLES IN YOUR AREA.

Stock # 18017



Standard Equipment

THE FOLLOWING ITEMS ARE STANDARD ON THIS MODEL AT NO EXTRA CHARGE

Optional Equipment

OPTIONAL EQUIPMENT INSTALLED ON THIS VEHICLE BY MANUFACTURER

- STANDARD EXTERIOR EQUIPMENT**
- Freightliner® S2RV chassis
 - GVWR- 31,000 lb.
 - GCWR- 43,000 lb.
 - Cummins® ISB 6.7L 360 HP diesel engine with 800 ft.-lb. torque
 - Allison® 3000 MH automatic transmission
 - 185-amp alternator
 - G-rated highway tires- 275/80R22.5
 - Alcoa® aluminum wheels
 - Engine exhaust brake
 - 12,000 lb. rear hitch receiver
 - 7-pin plug
 - Dual 12V chassis batteries
 - 100 gal. fuel tank
 - 10 gal. DEF tank
 - Stronghold® VBL™ roof, floor and sidewalls
 - Bead-foam insulation (R-24 max roof, R-9 max floor and R-8 max walls)
 - One-piece, seamless, crowned fiberglass roof
 - Premium Sikkens full-body paint
 - Automatic hydraulic leveling jacks
 - Entrance door with industry's largest travel-view window
 - Electric-powered entrance step
 - Slideout awning(s)
 - Exterior entertainment center with outside speakers and LED HD Smart TV mounted on swivel bracket
 - Winegard® in-motion satellite dish
 - Carpeted, full pass-through storage compartments with lockable slam-match doors
 - Theford® Sani-Con Turbo macerator system
 - Third brake light
 - Cable TV hookup with RG-6 coax and video selector switch
 - Winegard 2.0 Wi-Fi/4G antenna
 - Onan® 8,000W Quiet Diesel generator and auto-gen start
 - 200W solar panel with dual controller
 - (4) 6V AGM (220Ah) house batteries on slideout tray
 - Transfer switch with reverse polarity protection
 - 24.5 gal. propane tank (83 lb.)
 - LP quick-connect hookup
 - Exterior utility center
 - Winterization drain system
 - Black tank flush
 - Outside shower
 - 12V demand water pump
 - Water filtration system

- STANDARD INTERIOR EQUIPMENT**
- 6-way power driver and passenger seats
 - Deluxe heated, remote-controlled, side-view mirrors
 - Tilt steering wheel
 - Cruise control
 - Detroit automatic wipers/headlights
 - Power windows and door locks
 - Auxiliary start switch
 - Custom-molded ABS surround in cab-over area
 - Overhead bunk with 750 lb. capacity
 - Firefly total coach control system with wall-mounted touchscreen and mobile app
 - 84 in. interior ceiling height with padded vinyl ceiling
 - Day/night roller shades in living area
 - High-intensity, recessed LED ceiling lights
 - Vinyl plank flooring
 - Hardwood cabinet doors and drawer fronts
 - Deluxe hidden cabinet hinges
 - Ball-bearing drawer guides
 - 30,000 BTU auto-ignition furnace
 - 10 gal. gas/electric water heater
 - Electric fireplace
 - Jayco-exclusive, easy-operation legless dinette table
 - 2-point lap safety belts in all designated seating locations
 - Car seat leathers (select floorplans)
 - LED HD Smart TV in living area
 - Wood-framed kitchen window with spice cabinets
 - 2-burner induction cooktop
 - LED-lit, solid-surface kitchen countertops with recessed stainless steel sink and sink covers
 - Shower with decorative surround, glass door, skylight and light
 - Porcelain toilet with foot flush
 - Recessed stainless-steel bathroom sink
 - Powered roof vent in bathroom with wall switch
 - Walk-around, king-size bed with power head lift, bedspread and nightstands
 - USB port and wireless charging in nightstands
 - Under-bed storage
 - LED HD Smart TV in bedroom
 - Large wardrobes
 - Bunks with industry-exclusive 300 lb. capacity each (37L)
 - Wall-mounted tablet holder in each bunk (37L)
 - Smoke alarm
 - Carbon monoxide detector
 - Fire extinguisher

- Base price 345,000.00
- FOSSIL n/c
- OCELOT PAINT PACKAGE 30.00
- USA STANDARDS n/c
- 24 FR S2RV 31000 279" 360 RA15 n/c
- CUSTOMER VALUE PACKAGE 6,750.00
- RESIDENTIAL REFRIGERATOR n/c
- NO WASHER/DRYER n/c
- IN MOTION DISH SATELLITE SYSTEM n/c
- SLIDEOUT TRAY W/ELECTRIC COOLER IN BASEMENT 1,193.00
- HAB SOFA n/c

UNIT TOTAL 352,973.00

DEALER INSTALLED OPTIONS

DIMENSIONS

Exterior height:.....160.00"
 Exterior width:.....101.00"

CAPACITIES

Fresh water tank (gals.):...72.00
 Gray water tank (gals.):...81.00
 Black water/toilet tank (gals.):.....50.00
 Propane (lbs.):.....83
 Propane (gals.):.....19
 Water heater (gals.):.....0.00

TIRES

Tire size (front):.....275/80R22.5G
 Tire size (mid):.....
 Tire size (rear):.....275/80R22.5G

Some dimensions may be rounded and may vary from the actual dimensions
 Weights may be estimated calculations and may vary from the actual weight - refer to the vehicle weight labels for actual weights
 Floorplans, features and specifications are subject to change without notice.

