



# Jay Flight



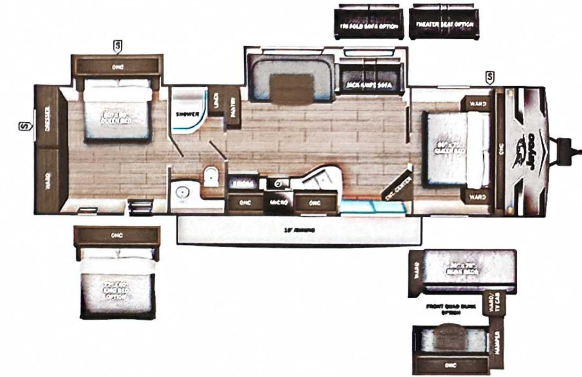
Serial #: 1UJBC0BV3R17H0088  
 Model: 380DQS JAY FLIGHT TT

Model Year: 2024 Dealer Name: HILLTOP CAMPER AND RV  
 1240 LAKE SHADY AVE. SOUTH  
 ORONOCO, MN 55960  
 USA

## Manufacturer's Suggested Retail Price \$59,147.00

TOTAL AMOUNT DOES NOT INCLUDE STATE AND LOCAL TAXES OR LICENSE FEES. THE PRICE SHOWN ABOVE MAY OR MAY NOT BE REPRESENTATIVE OF THE ACTUAL SELLING PRICE OF SIMILAR RECREATIONAL VEHICLES IN YOUR AREA.

Stock # 17823



### Standard Equipment

THE FOLLOWING ITEMS ARE STANDARD ON THIS MODEL AT NO EXTRA CHARGE

### Optional Equipment

OPTIONAL EQUIPMENT INSTALLED ON THIS VEHICLE BY MANUFACTURER

- EXTERIOR**
- 20 lb. LP bottles with cover (2)
  - Enclosed underbelly
  - Axles with electric, self-adjusting brakes and easy-lube hubs
  - 1-Class™ cambered structural steel I-beams
  - 5/8 in. tongue-and-groove plywood floor decking
  - Magnum Truss™ Roof system with plywood decking
  - Seamless one piece roof material
  - Large exterior downspouts
  - Galvanized steel, impact-resistant wheel wells
  - 30-amp service
  - Front diamond plate
  - Exterior TV mount and bracket
  - LP quick connect (outside gas grill prep)

- INTERIOR**
- 81 in. ceiling height
  - 8 cu. ft. 12V refrigerator
  - Shower/tub surround
  - Solid hardwood cabinet doors
  - J-Steel™ jackknife sofa with armrest & cup holders (most models)
  - Vinyl flooring throughout (including slide floors)
  - Window shades
  - Smoke-glass cabinet door inserts (select models)
  - Residential-style kitchen countertops
  - Heavy-duty, 75 lb., full-extension, steel ball-bearing drawer guides
  - USB charging station
  - Queen mattress
  - Plywood bed platforms
  - Main bed struts
  - 300 lb. rated bunk beds (select models)
  - 600 lb. rated bunk beds (double bunks)
  - Privacy curtains in bunk areas (select models)
  - Vented bunk windows (select models)
  - 4 in. thick bunk mats (select models)
  - Wooden bedroom doors (select models)
  - Shower curtain with curved shower track (select models)

**CUSTOMER VALUE PACKAGE (Mandatory)**

- Black tank flush
- Overlander 1 Solar Package: (1) 200W solar panel and 30-amp digital controller
- Large main entry door grab handle
- Solid Step® entry steps (N/A 380DQS)
- On-demand tankless water heater
- Goodyear® Endurance® tires (made in the USA)
- Outside shower
- Power tongue jack
- Spare tire with cover
- Power awning with LED lights
- Marine grade exterior speakers
- Keyed-Alike™ entry and baggage doors
- Bathroom power vent
- Bathroom skylight
- 15.5k BTU A/C
- AM/FM/Bluetooth® stereo
- Backup and side view camera prep
- Bathroom medicine cabinet
- Detachable power cord
- Fitted bed sheet
- Friction hinge entry door with window and shade prep
- G20 dark tinted privacy windows
- Inverted pre-wire
- LED exterior and interior lights
- Marine grade exterior speakers
- Microwave oven
- One-piece front fiberglass exterior wall
- Oven with 3-burner recessed cooktop with glass cover
- Range hood
- Rock-Solid Stabilizer System
- Seamless countertops
- Sink cover

Base price	50,325.00
USA STANDARDS	n/c
CUSTOMER VALUE PACKAGE	5,250.00
15,000 BTU A/C	300.00
2ND AC	893.00
FIBERGLASS SIDEWALL	1,500.00
BLACK SPOKE RIMS	n/c
20# LP GAS BOTTLES	n/c
ROOF LADDER	188.00
HIDE-A-BED SOFA	593.00
KING BED	98.00
FRONT QUEEN BED	n/c
Install 120V Residential Refer	n/c

UNIT TOTAL **59,147.00**

DEALER INSTALLED OPTIONS

**UVW**  
8881 lbs

**Sleeps**

**Length**  
40' 3.75"

**DIMENSIONS**

Exterior height:.....134.75"  
 Exterior width:.....96.00"  
**WEIGHTS**  
 GVWR:.....9995  
 GAWR (front):.....5145  
 GAWR (rear):.....5145

**CAPACITIES**

Fresh water tank (gals.):...52.00  
 Gray water tank (gals.):...39.00  
 Black water/toilet tank (gals.):...39.00  
 Propane (lbs.):......40  
 Propane (gals.):......9  
 Water heater (gals.):.....0.00

**TIRES**

Tire size (front):.....ST225/75R15E  
 Tire size (mid):.....  
 Tire size (rear):.....ST225/75R15E  
 Tire size (spare):.....ST225/75R15E

**SEATING & SLEEPING**

\*\*\*Some dimensions may be rounded and may vary from the actual dimensions\*\*\*  
 \*\*\*Weights may be estimated calculations and may vary from the actual weight - refer to the vehicle weight labels for actual weights\*\*\*  
 Floorplans, features and specifications are subject to change without notice.

