

Super Lite



Manufacturer's Suggested Retail Price \$43,741.00

TOTAL AMOUNT DOES NOT INCLUDE STATE AND LOCAL TAXES OR LICENSE FEES. THE PRICE SHOWN ABOVE MAY OR MAY NOT BE REPRESENTATIVE OF THE ACTUAL SELLING PRICE OF SIMILAR RECREATIONAL VEHICLES IN YOUR AREA.

Stock # 17466

Serial #: 1SABV0BK8P3YB5165
Model: 212FB SUPER LITE TT

Model Year: 2023 Dealer Name: HILLTOP CAMPER AND RV
1240 LAKE SHADY AVE. SOUTH
ORONOCO, MN 55960
USA



Standard Equipment

Optional Equipment

THE FOLLOWING ITEMS ARE STANDARD ON THIS MODEL AT NO EXTRA CHARGE

OPTIONAL EQUIPMENT INSTALLED ON THIS VEHICLE BY MANUFACTURER

TERIOR
- 8' main floor decking
- oor side spray port
- exterior grill/middle quick connect port
- lexible LP lines
- foldable grab handle
- ully-walkable roof
- i-frame battery rack
- agnetic baggage door catches
- versized pass-through storage with motion
- tring
- VC roofing membrane (limited lifetime warranty)
- ain guttering with molded drip spouts
- ear observation camera prep
- afety bumper w/ drain hose carrier and end caps
- elf-adjusting electric brakes
- ide camera prep marker lights
- old swing-down entry steps
- hermal Seal - enclosed, insulated and heated
- iberbelly with fully insulated roof with a PVC roofing
- rbrane
- nited safety-glass windows throughout
- uffShell™ - vacuum bonded laminated construction,
- orced with heavy-duty fiberglass and welded
- nimum frames

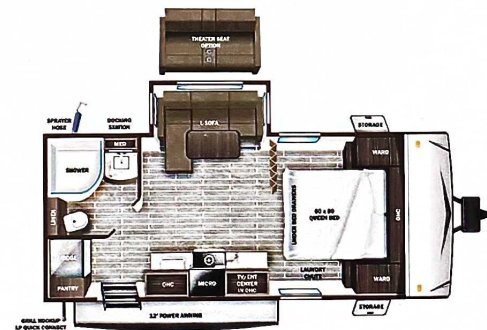
INTERIOR
- 60" x 80" residential queen bed with storage drawers below
- 75 lb. ball bearing drawer guides
- 81" interior height
- Cable and satellite prep
- Electrical outlets and USB ports in master bedroom
- Flush floor slides with residential vinyl flooring
- Hardwood cabinet doors
- Kitchen sink covers
- Laundry chute in bedroom
- LED interior lighting
- Medicine cabinet
- Powered 12V bathroom vent
- Range hood
- Residential high-rise faucet with pull-down sprayer
- Roller blackout night shades
- Soft closing foot flush toilet
- Stainless steel single basin under-mount kitchen sink
- Tri-fold sofa (select models)

CUSTOMER CONVENIENCE PACKAGE (Mandatory)
- 15,000 BTU roof mounted A/C
- 2-30 lb. LP bottles
- 3-burner range with 17" oven and flush mount glass cover
- 10 cu. ft. 12V residential refrigerator
- Dome style digital TV antenna with Wi-Fi prep
- Enclosed exterior docking station with black tank flush
- Entrance door with screen door, window and magnet door
- catch
- EZ-store detachable cord
- Gas/electric water heater
- JBL® Aura Cube stereo with Bluetooth® and miZONE™
- technology
- JBL® Premium indoor and outdoor multizone speakers
- JBL® Microwave
- Molded front cap with LED lighting and stoneguard
- protection
- Nitrogen filled radial tires with aluminum rims
- Pop up wireless and USB charger in bedroom
- Power awning with LED lighting
- Power tongue jack
- Pressed membrane countertops
- Rear roof access ladder
- Smart HDTV

Base price	38,798.00
USA Standards	n/c
Customer Convenience Package	4,500.00
No Solar Package	n/c
8 Cu. Ft. Refrigerator	443.00
Manual Stab Jacks	n/c
L-Sofa	n/c

UNIT TOTAL **43,741.00**

DEALER INSTALLED OPTIONS



UVW
4973 lbs

Sleeps

Length
23' 3"

DIMENSIONS

Exterior height:.....132.63"
Exterior width:.....96.75"

WEIGHTS

GVWR:.....6400
GAWR (front):.....3500
GAWR (rear):.....3500
Approx. Gross Cargo Carrying Capacity (GCCC):.....1427

TIRES

Tire size (front):.....ST205/75R14D
Tire size (mid):.....
Tire size (rear):.....ST205/75R14D

CAPACITIES

Fresh water tank (gals.):...45.00
Gray water tank (gals.):...29.00
Black water/toilet tank (gals.):.....29.00
Propane (lbs.):.....60
Propane (gals.):.....14
Water heater (gals.):.....6.00

SEATING & SLEEPING

Some dimensions may be rounded and may vary from the actual dimensions
Weights may be estimated calculations and may vary from the actual weight - refer to the vehicle weight labels for actual weights
Floorplans, features and specifications are subject to change without notice.

