



## Jay Flight SLX



Serial #: 1UJBC0BT7T16B0060  
Model: 330TBS JAY FLIGHT SLX TT

Model Year: 2026 Dealer Name: HILLTOP CAMPER AND RV  
1240 LAKE SHADY AVE. SOUTH  
ORONOCO, MN 55960  
USA

### Standard Equipment

#### THE FOLLOWING ITEMS ARE STANDARD ON THIS MODEL

##### STANDARD EXTERIOR EQUIPMENT

- 30-amp service
- 8,000 BTU wall mount A/C (single axle models)
- 13,500 BTU Roof A/C (double axle models)
- Axles with electric, self-adjusting brakes and easy-lube hubs
- Exterior cable TV hookup
- Fully-integrated A-frame
- Galvanized-steel, impact resistant wheel wells
- Large exterior downspouts
- LP quick connect (outside grill prep) [N/A on Sport Edition]
- Magnum Truss™ Roof System
- Nitrogen filled radial tires
- PVC roofing membrane (limited lifetime warranty)

##### CUSTOMER VALUE PACKAGE (MANDATORY)

- 8 cu. ft. 12V refrigerator
- AM/FM/Bluetooth® stereo
- Backup camera prep
- Bathroom skylight
- Bathroom vent
- Detachable power cord
- Entry door with window and shade prep
- Fitted bed sheet
- G20 dark tinted privacy windows
- Keyed-Alike™ entry and baggage doors
- Large folding entry door grab handle
- LED interior and exterior light
- Marine grade exterior stereo speakers
- Microwave oven
- On-demand tankless water heater
- Power awning with LED lights
- Range hood
- MoRyde Step Above® entry steps
- Spare tire with cover
- Stabilizer jacks
- Tub/shower surround
- Window shades

##### STANDARD INTERIOR EQUIPMENT

- 300 lb. rated single bunk beds
- 600 lb. rated double bunk beds
- Digital TV antenna
- Heavy-duty, 75 lb., full-extension, steel ball-bearing drawer guides
- High rise kitchen faucet
- Marine-grade toilet with foot flush
- Plywood bed platforms
- Queen mattress
- Residential-style hidden cabinet door hinges
- Residential-style kitchen countertops
- Shower curtain with curved shower track (select models)
- Solid hardwood cabinet doors with screwed stile construction and hidden hinges
- Vinyl flooring throughout

### Optional Equipment

#### OPTIONAL EQUIPMENT INSTALLED ON THIS VEHICLE BY MANUFACTURER

Base price	38,018.00
USA STANDARDS	n/c
CUSTOMER VALUE PACKAGE	5,250.00
OVERLANDER SOLAR PACKAGE	443.00
ELITE PACKAGE	1,493.00
15,000 BTU ROOF MOUNTED AC	300.00
NO 2ND AC	n/c
NO 3RD AC	n/c
50 AMP SERVICE	443.00
JACK KNIFE SOFA	n/c

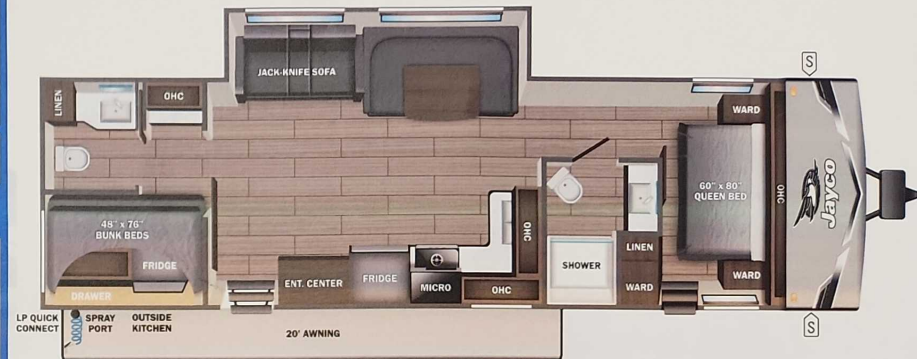
UNIT TOTAL 45,947.00

DEALER INSTALLED OPTIONS

## Manufacturer's Suggested Retail Price \$45,947.00

TOTAL AMOUNT DOES NOT INCLUDE STATE AND LOCAL TAXES OR LICENSE FEES. THE PRICE SHOWN ABOVE MAY OR MAY NOT BE REPRESENTATIVE OF THE ACTUAL SELLING PRICE OF SIMILAR RECREATIONAL VEHICLES IN YOUR AREA.

Stock #19322



**UVW**  
7826 lbs



**Sleeps**



**Length**  
37' 6.75"

#### DIMENSIONS

Exterior height:.....135.00"  
Exterior width:.....96.00"

#### WEIGHTS

GVWR:.....9300  
GAWR (front):.....4400  
GAWR (rear):.....4400

Approx. Gross Cargo Carrying Capacity (GCCC):.....1474

#### TIRES

Tire size (front):.....ST225/75R15E  
Tire size (mid):.....  
Tire size (rear):.....ST225/75R15E  
Tire size (spare):.....ST225/75R15E

#### CAPACITIES

Fresh water tank (gals.):.....52.00  
Gray water tank (gals.):.....78.00  
Black water/toilet tank (gals.):.....78.00  
Propane (lbs.):.....40  
Propane (gals.):.....9  
Water heater (gals.):.....0.25

#### SEATING & SLEEPING

\*\*\*Some dimensions may be rounded and may vary from the actual dimensions\*\*\*

\*\*\*Weights may be estimated calculations and may vary from the actual weight

- refer to the vehicle weight labels for actual weights\*\*\*

Floorplans, features and specifications are subject to change without notice.

**2+3**  
YEAR YEAR  
LIMITED STRUCTURAL  
WARRANTY