

FLAGSTAFF

TRAVEL TRAILERS



E-PRO | MICRO LITE | SHAMROCK | SUPER LITE



FOREST RIVER

FORESTRIVERINC.COM



FOREST RIVER

A Berkshire Hathaway Company

BUILT AND BACKED BY FOREST RIVER

Founded in 1996 by Pete Liegl, Forest River, Inc. has evolved into North America's largest manufacturer of recreational vehicles, cargo trailers, pontoon boats, and commercial vehicles including buses, vans, and trucks. Its portfolio includes market share leaders in every category, and it is the country's leading manufacturer of buses and vans for both the private and public sectors. Based in Elkhart, Indiana, Forest River employs 14,000+ employees in 100+ facilities in more than a half dozen states. With a commitment to excellence and a focus on customer satisfaction, Forest River is proud to be a Berkshire Hathaway company.

**NEVER
STOP
GOING.™**

FORESTRIVERINC.COM



FLAGSTAFF

MILLERSBURG
MADE

The story of Flagstaff is deeply intertwined with the town of Millersburg, Indiana. Here, generations of families have contributed to the creation of RVs known for their reliability and lasting value. “Millersburg Made” signifies a commitment to community and a dedication to building RVs you can trust. It’s the assurance that your Flagstaff has been built with care, by people who take pride in their work and stand behind every RV that leaves our doors.

CONTENTS

E-PRO	4
MICRO LITE	11
SHAMROCK	18
SUPER LITE	22

E-PRO

GO FURTHER, STAY LIGHTER



Built for the modern explorer, the Flagstaff E-Pro travel trailer is the go-to choice for off-grid adventurers and eco-conscious travelers alike. Lightweight and compact, yet packed with innovative technology and smart storage solutions, E-Pro models are designed for efficiency without sacrificing comfort. From rugged tires and standard solar (N/A LE Models) to versatile interiors that adapt to your journey, this travel trailer is ready to follow wherever your sense of adventure leads.



**SCAN TO VIEW PRICING AND
MORE INFORMATION OR VISIT:**

[FORESTRIVERINC.COM/RVS/
FLAGSTAFF-E-PRO](https://FORESTRIVERINC.COM/RVS/FLAGSTAFF-E-PRO)



20FBS



19DBH



19FDS



20FK

POWER PACKAGE



- 15A Receptacle Charging with Combimaster Power Sharing Feature
- 3000W Inverter/Charger with 160A Charging Capacity
- 11,000 BTU Soft Start Power Saver A/C
- Two Mastervolt Smart Remotes
- 50A DC/DC Charger
- 30A Charge Controller
- 460Ah Mastervolt Lithium Battery
- (3) 200W GoPower® Solar Panels
- Centralized System Disconnect Switch

Available in Select E-Pro Models Only

E-PRO KEY FEATURES

- 6-Sided Aluminum Framing w/Aluminum Dinettes, Bed Bases & Composite Construction (5-Sided 11LE)
- One Piece Vacuum Laminated Roof w/High Density Block Foam Insulation
- 5/8" Tongue & Groove Plywood Floors (N/A 11LE, 13LE) w/One Piece Seamless Linoleum Coverage
- Dexter® Torflex® Axles (LE Models: Dexter® Leaf-Spring Axles w/E-Z Lube®)
- Balance Beads & Wheel-Banded Tire Pressure Monitoring System (TPMS) (N/A LE Models)
- Power Pro™ Voice Activated Control Panel (N/A LE Models)
- MORryde Solid Steps & Extended Entry Door Grab Handle (Grab Handle N/A LE Models)

NEW LE LINE

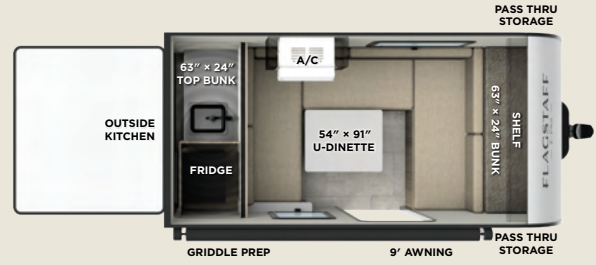
E11LE NEW

UVW: 1738 lb

CCC: 957 lb

Hitch Weight: 203 lb

Exterior Length: 14' 11"



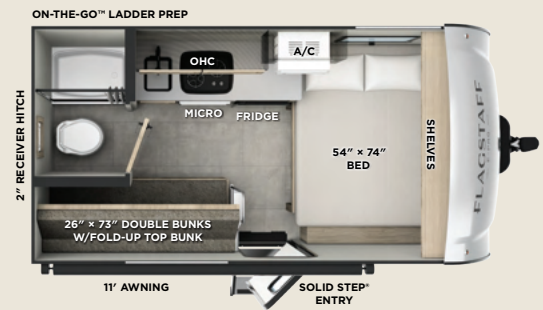
E13LE NEW

UVW: 2296 lb

CCC: 1488 lb

Hitch Weight: 284 lb

Exterior Length: 16'



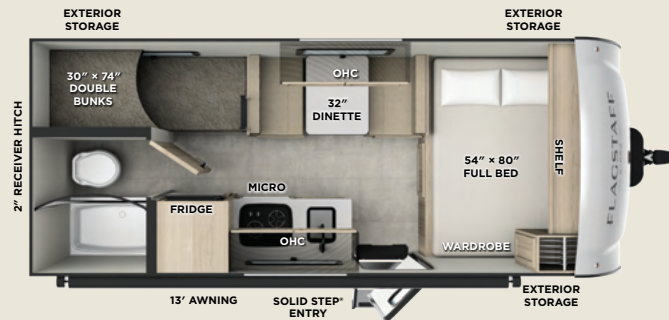
E17LE NEW

UVW: 2634 lb

CCC: 1152 lb

Hitch Weight: 286 lb

Exterior Length: 20' 2"



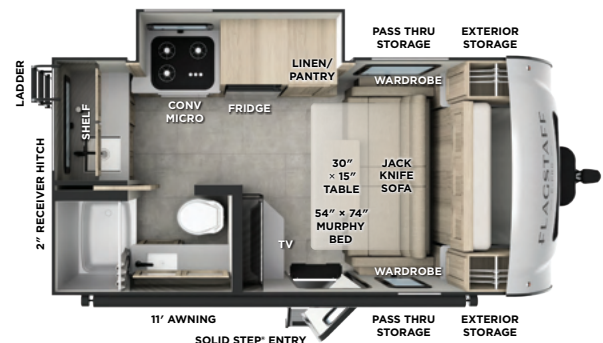
E15FBS

UVW: 3452 lb

CCC: 971 lb

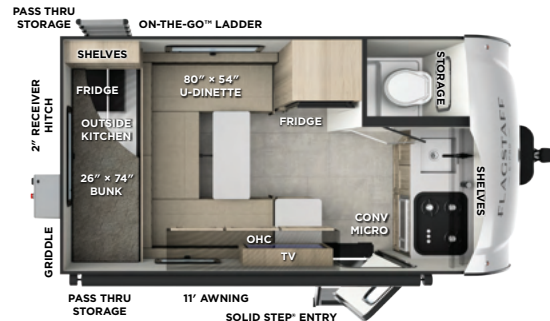
Hitch Weight: 423 lb

Exterior Length: 17' 5"



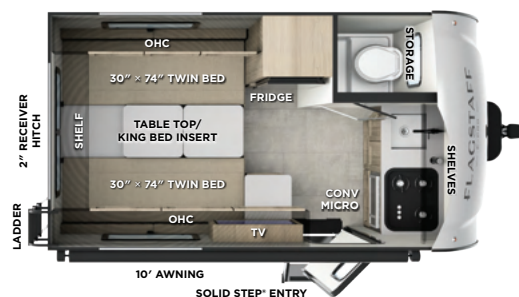
E15RDG

UVW: 2883 lb
 CCC: 1442 lb
 Hitch Weight: 325 lb
 Exterior Length: 16' 2"



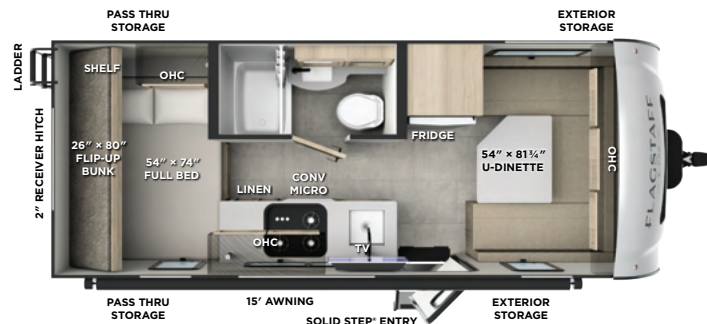
E15TB

UVW: 2846 lb
 CCC: 1061 lb
 Hitch Weight: 407 lb
 Exterior Length: 15' 8"



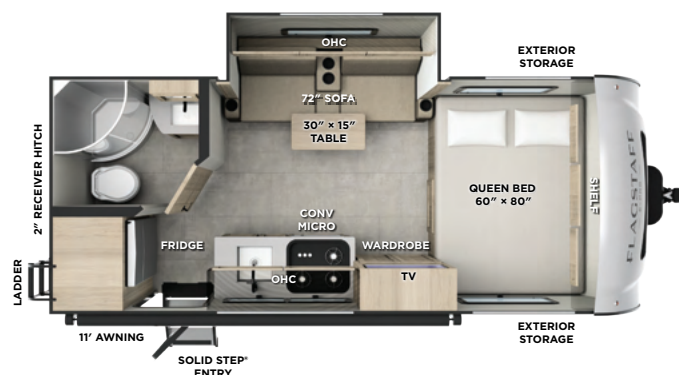
E19DBH

UVW: 3496 lb
 CCC: 986 lb
 Hitch Weight: 482 lb
 Exterior Length: 20' 8"



E19FBS

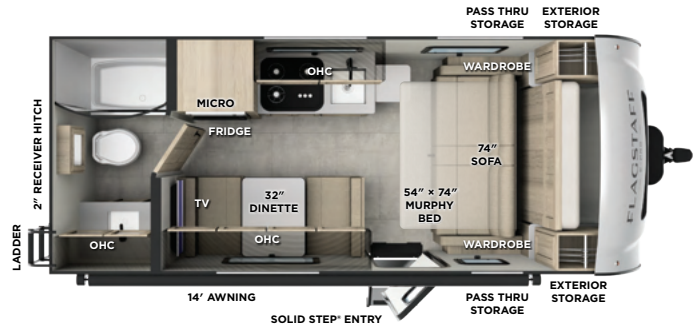
UVW: 3590 lb
 CCC: 850 lb
 Hitch Weight: 440 lb
 Exterior Length: 20' 2"



E19FD



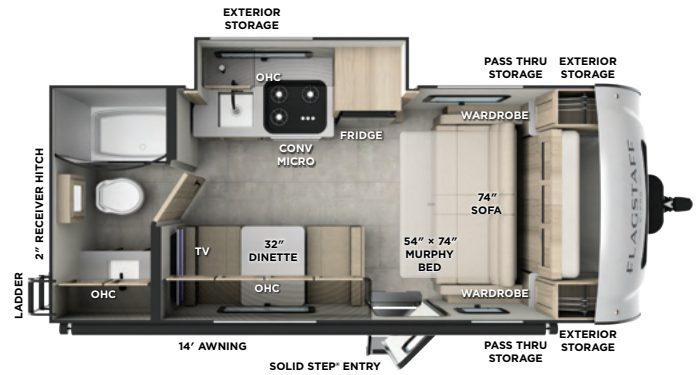
UVW: 3511 lb
 CCC: 924 lb
 Hitch Weight: 435 lb
 Exterior Length: 20' 2"



E19FDS



UVW: 3602 lb
 CCC: 898 lb
 Hitch Weight: 500 lb
 Exterior Length: 20' 2"



E19RL

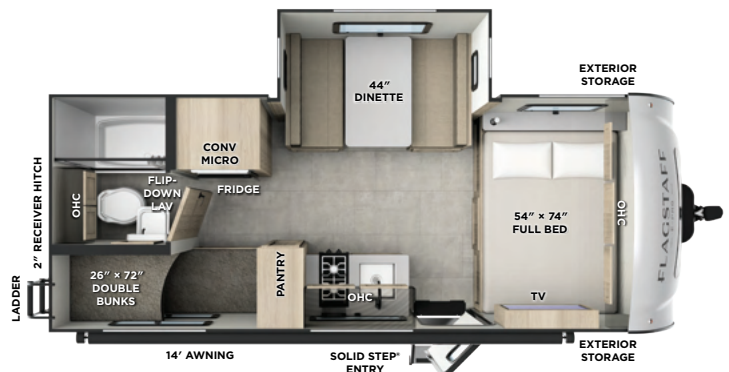
UVW: 3814 lb
 CCC: 1183 lb
 Hitch Weight: 407 lb
 Exterior Length: 20' 8"



E20BH

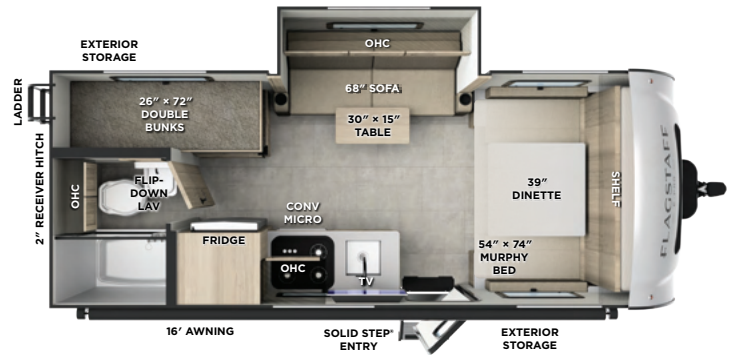


UVW: 3843 lb
 CCC: 1155 lb
 Hitch Weight: 501 lb
 Exterior Length: 21' 2"



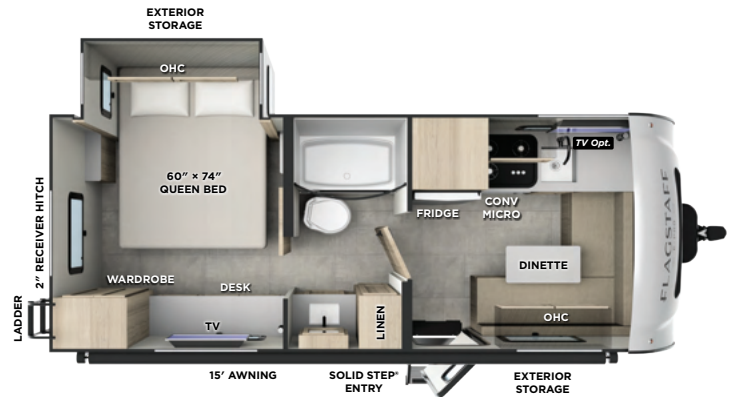
E20BHT

UVW: 3953 lb
 CCC: 1542 lb
 Hitch Weight: 455 lb
 Exterior Length: 21' 2"



E20BS NEW

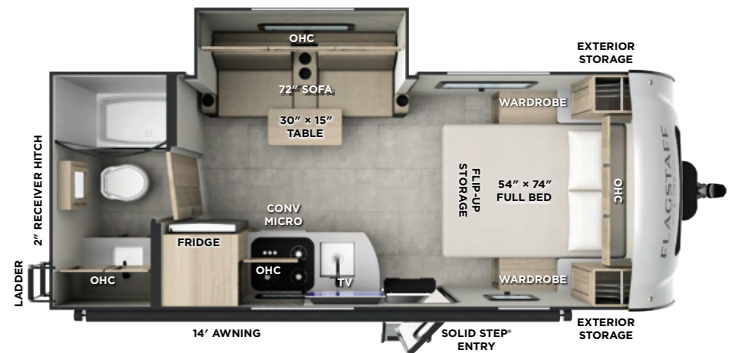
UVW: 3838 lb
 CCC: 1159 lb
 Hitch Weight: 535 lb
 Exterior Length: 21' 2"



E20FBS

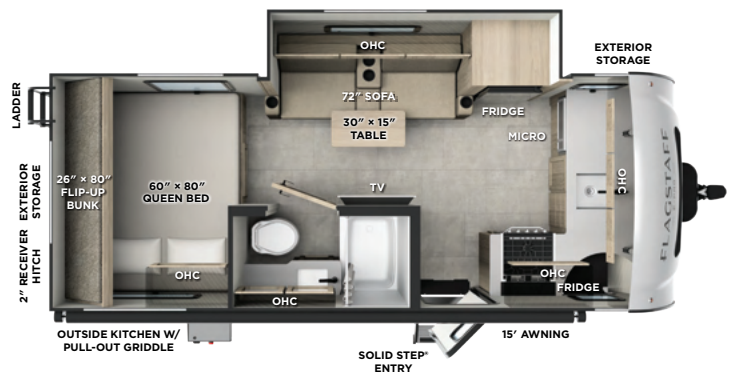


UVW: 3669 lb
 CCC: 752 lb
 Hitch Weight: 421 lb
 Exterior Length: 21' 2"



E20FK

UVW: 4217 lb
 CCC: 1278 lb
 Hitch Weight: 619 lb
 Exterior Length: 21' 2"



E-PRO SPECIFICATIONS

Floorplan	Length	Height	Width	Hitch Weight	Axle Weight	UVW	CCC	Awning	Fresh Water	Gray Water	Black Water
E11LE	14' 11"	8' 7"	7' 4"	203 lb	1497 lb	1738 lb	957 lb	9'	18 gal	6 gal	N/A
E13LE	16'	9' 2"	7'	284 lb	1974 lb	2296 lb	1488 lb	11'	31 gal	27 gal	27 gal
E15FBS	17' 5"	10' 1"	7' 8"	423 lb	2991 lb	3452 lb	971 lb	11'	31 gal	27 gal	27 gal
E15RDG	16' 2"	10' 1"	7' 8"	325 lb	2520 lb	2883 lb	1442 lb	11'	31 gal	15 gal	12 gal
E15TB	15' 8"	10' 1"	7' 8"	407 lb	2401 lb	2846 lb	1061 lb	10'	31 gal	15 gal	12 gal
E17LE	20' 2"	10'	7'	286 lb	2310 lb	2634 lb	1152 lb	13'	31 gal	27 gal	27 gal
E19DBH	20' 8"	10' 2"	7' 8"	482 lb	2976 lb	3496 lb	986 lb	15'	31 gal	27 gal	27 gal
E19FBS	20' 2"	10' 1"	7' 8"	440 lb	3112 lb	3590 lb	850 lb	11'	31 gal	27 gal	27 gal
E19FD	20' 2"	10' 1"	7' 8"	435 lb	3038 lb	3511 lb	924 lb	14'	31 gal	27 gal	27 gal
E19FDS	20' 2"	10' 1"	7' 8"	500 lb	3064 lb	3602 lb	898 lb	14'	31 gal	27 gal	27 gal
E19RL	20' 8"	10' 1"	7' 8"	407 lb	3369 lb	3814 lb	1183 lb	14'	31 gal	27 gal	27 gal
E20BH	21' 2"	10' 4"	7' 8"	501 lb	3304 lb	3843 lb	1155 lb	14'	31 gal	27 gal	27 gal
E20BHT	21' 2"	10' 1"	7' 8"	455 lb	3460 lb	3953 lb	1542 lb	16'	31 gal	27 gal	27 gal
E20BS	21' 2"	10' 1"	7' 8"	535 lb	3265 lb	3838 lb	1159 lb	15'	31 gal	27 gal	27 gal
E20FBS	21' 2"	10' 1"	7' 8"	421 lb	3238 lb	3669 lb	752 lb	14'	31 gal	27 gal	27 gal
E20FK	21' 2"	10' 1"	7' 8"	619 lb	3560 lb	4217 lb	1278 lb	15'	31 gal	42 gal	27 gal

SUPERIOR CONSTRUCTION

- Complete Composite Wall Construction
- 5/8" Tongue & Groove Plywood Floor
- Fully Laminated Walkable Roof
- 6-Sided Full-Aluminum Frame

STANDARD FEATURES

- Key-Alike Lock System w/Slam Latch Baggage Doors
- Back-Up Camera Prep
- 200W Solar Panel with 1800W Inverter & 30 AMP Charge Controller
- Maxxair 4-Speed Fan with Cover
- Winegard Air 360+ Prepped for Wi-Fi

SAFETY STANDARDS

- MORryde Solid, Supported Steps
- Dexter® Torflex® Axles
- Nitrogen-Filled Tires w/Balancing Beads

CLIMATE PROTECTION PACKAGE

- 12V Thermostat-Controlled Heated Tanks and Dump Valves

OPTIONAL FEATURES (NOT PICTURED)

- Additional 200W Solar Panel
- Slide Topper
- ProRac Roof Mounting Bars (N/A with Power Package or 2nd Solar Panel)

- Aluminum Floor Joists
- Aluminum Dinette, Bed, and Bunk
- Aluminum Truss Roof Bracing
- Fiberglass Front Cap
- Automotive Glass Windshield (Where Available)

- Performance Tires w/Lifted Suspension
- Frameless Windows
- Additional Solar Prep
- Double Battery Box
- Double 20 lb LP Tanks
- Power Pro™ Voice Activated Control Panel

- Wheel-Banded Tire Pressure Monitoring System (TPMS)

- Radiant Foil in Front Cap

- Tongue Mount Bike Rack
- Power Package (Select Models)
- 3 - 200W Solar Panels
- 460Ah Lithium Battery
- 3000W Inverter

N/A LE MODELS

SUPERIOR CONSTRUCTION

- Complete Composite Wall Construction
- 5/8" Tongue & Groove Flooring (17LE) One-Piece Seamless Flooring (11LE, 13LE)
- Fully Laminated Walkable Roof

STANDARD FEATURES

- Key-Alike Lock System w/Slam Latch Baggage Doors
- Back-Up Camera Prep
- Power Vent Fan
- Framed Windows
- Solar Prep
- Single Battery Box
- 20 lb LP Tank

SAFETY STANDARDS

- MORryde Solid, Supported Steps

LE MODELS ONLY

- 6-Sided Full-Aluminum Frame (5-Sided 11LE)
- Aluminum Floor Joists (N/A 11LE)
- Aluminum Dinette, Bed, and Bunk
- Aluminum Truss Roof Bracing
- Fiberglass Front Cap (N/A 11LE)

- 8K BTU Window A/C (10K Roof Mount on 17LE)
- 6 Gallon Water Heater (N/A 11LE)
- 6" Mattress (N/A 11LE)
- 3" Bunk Mat
- 2-Burner LP Stove (Outside Griddle on 11LE)

- Dexter® Leaf-Spring Axles w/E-Z Lube®

SUNSET SEEKER PACKAGE

2 Tone Fiberglass Exterior, High Gloss Fiberglass Cap, Composite Structural Exterior Walls, Vacuum Laminated Roof, Aluminum Cage Construction, Frameless Windows, Front Windshield (Where Available), Prewire for Backup Camera, Heated Holding Tanks, 200W Solar Panel w/ Inverter & Additional Solar Side Port, AIR 360+ Omnidirectional Antenna w/Wi-Fi Prep, Power Pro App Monitor Panel, 12V Entertainment Smart TV w/Stereo, 12V Refrigerator, Microwave Oven (Convection STD without Oven), Recessed 3- Burner Cooktop with Glass Cover (Gas Oven 20FK), Auto Ignite Gas/Electric Waterheater, 20,000 BTU Furnace, 13,500 BTU A/C (20BS: Two 10K BTU A/Cs), Dexter® Torflex® Torsion Axles, Sport Tires & Wheels w/TPMS Tire Pressure Monitoring System, Roller Shades, Key Alike Doors, Soft Close Roller Bearing Drawers, Hidden Cabinet Hinges, Exterior Ladder, Black Tank Flush (NA 15TB, 15RDG), Shower Miser, Exterior Hot/Cold Water Port, Outside Speaker, 2" Accessory Hitch, Gas Griddle Prep, Spare Tire, Power Tongue Jack, TRUSS Stabilizer Jacks, Power Awning

N/A LE MODELS

RIVER TO FOREST PACKAGE

2 Tone Fiberglass Exterior, High Gloss Fiberglass Cap (N/A 11LE), Composite Structural Exterior Walls, Vacuum Laminated Roof, Aluminum Cage Construction, Framed Windows, Power Awning, Solar Side Port, Refrigerator, Microwave Oven, 6-Gal Water Heater (N/A 11LE), 20,000 BTU Furnace, Wall Mount A/C (17LE: 10K Roof Mount A/C), Dexter® Leaf-Spring Axles, Roller Shades, Stabilizer Jacks, Recessed 2- Burner Cooktop with Glass Cover, 2" Accessory Hitch (11LE 1-1/4" Hitch), Soft Close Roller Bearing Drawers

LE MODELS ONLY



SCAN TO LEARN RV TERMINOLOGY OR VISIT:

FORESTRIVERINC.COM/RV-DEFINITIONS

MICRO LITE

COMPACT COMFORT, BOUNDLESS ADVENTURES



The Flagstaff Micro Lite travel trailer is designed for adventurers seeking a lightweight yet feature-rich camping experience. Offering a variety of floorplans, the Micro Lite balances comfortable interiors with easy towing, making it ideal for those with SUVs or smaller trucks. Expect well-equipped kitchens, cozy sleeping areas, and thoughtful amenities, all within a durable and stylish build that allows you to explore with confidence.



SCAN TO VIEW PRICING AND MORE INFORMATION OR VISIT:

FORESTRIVERINC.COM/RVS/FLAGSTAFF-MICRO-LITE



25MBR



25FBLS



25DBH



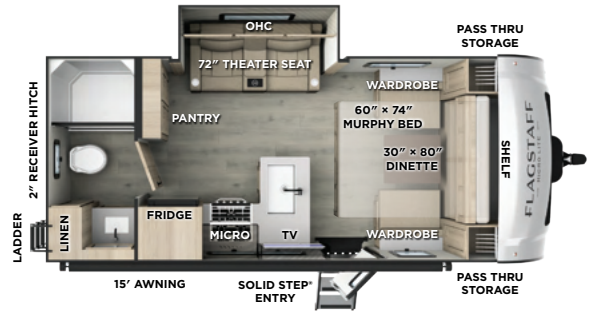
25SRK

MICRO LITE KEY FEATURES

- 6-Sided Aluminum Framing w/Aluminum Dinettes, Bed Bases & Composite Construction
- One Piece Vacuum Laminated Roof w/High Density Block Foam Insulation
- 5/8" Tongue & Groove Plywood Floors w/One Piece Seamless Linoleum Coverage
- Dexter® Torflex® Axles
- Goodyear Endurance Tires
- Balance Beads & Wheel-Banded Tire Pressure Monitoring System (TPMS)
- MORryde Strut Assist Steps (N/A 21FBRS) & Extended Entry Door Grab Handle

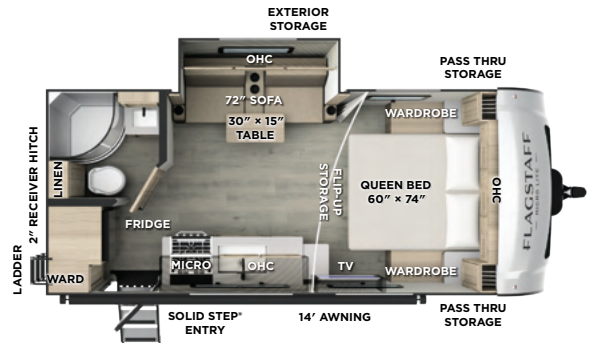
21SRB NEW

UVW: 4759 lb
 CCC: 1630 lb
 Hitch Weight: 680 lb
 Exterior Length: 22' 4"



21FBRS

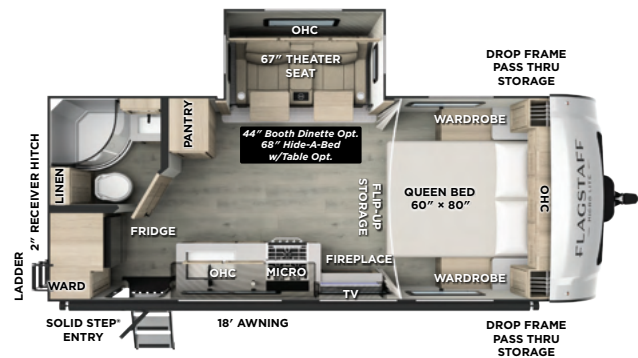
UVW: 4493 lb
 CCC: 1344 lb
 Hitch Weight: 557 lb
 Exterior Length: 22' 4"



22FBS



UVW: 5132 lb
 CCC: 1662 lb
 Hitch Weight: 634 lb
 Exterior Length: 23' 10"



POWER PACKAGE



- 15A Receptacle Charging with Combimaster Power Sharing Feature
- 3000W Inverter/Charger with 160A Charging Capacity
- 13,500 BTU Soft Start Power Saver A/C
- 5" Touchscreen Monitor
- 50A DC/DC Charger
- 460Ah Mastervolt Lithium Battery
- Integrated 60A MPPT Charge Controller
- (5) 200W GoPower® Solar Panels
- Centralized System Disconnect Switch

Available in Select Micro Lite Models Only

22SQS

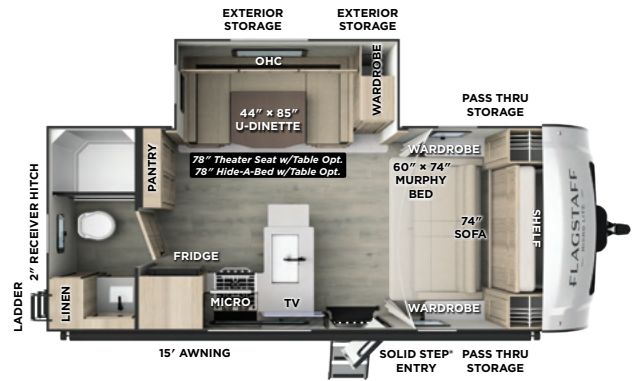


UVW: 5275 lb

CCC: 1550 lb

Hitch Weight: 748 lb

Exterior Length: 23' 10"



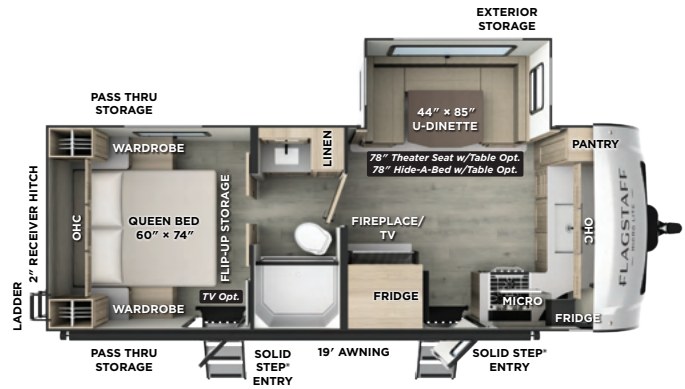
25FKB

UVW: 5689 lb

CCC: 2131 lb

Hitch Weight: 820 lb

Exterior Length: 25' 11"



25BRDS

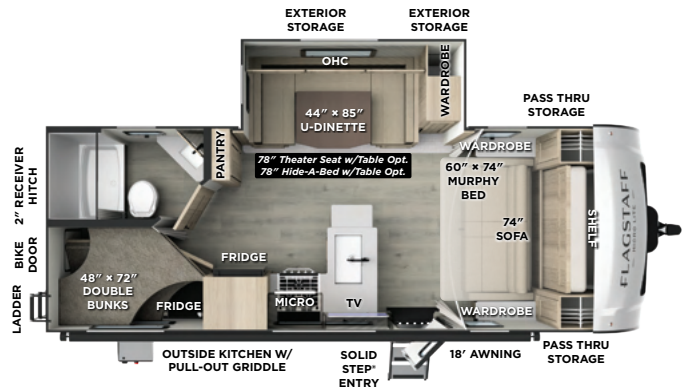


UVW: 5499 lb

CCC: 1434 lb

Hitch Weight: 773 lb

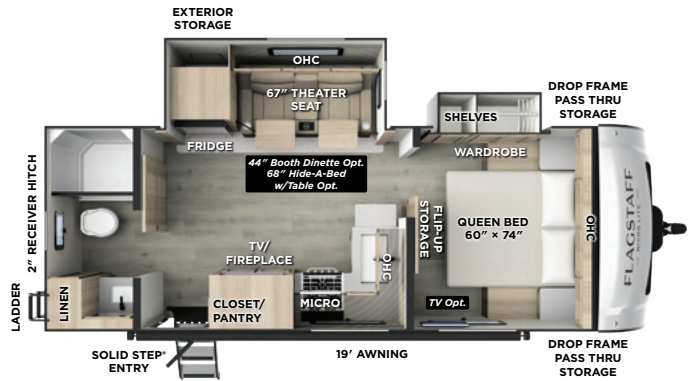
Exterior Length: 25' 11"



25FBLS



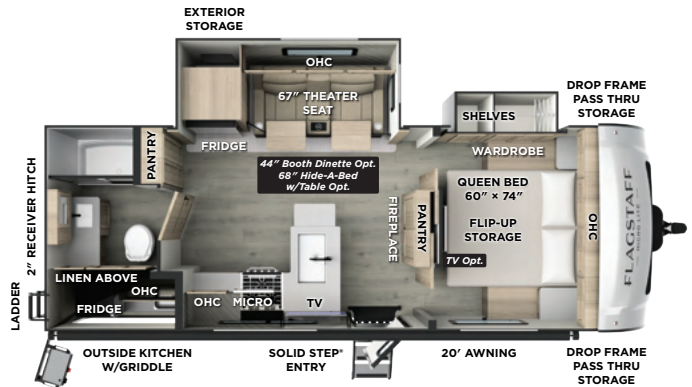
UVW: 5756 lb
CCC: 1941 lb
Hitch Weight: 697 lb
Exterior Length: 25' 10"



25BSDS



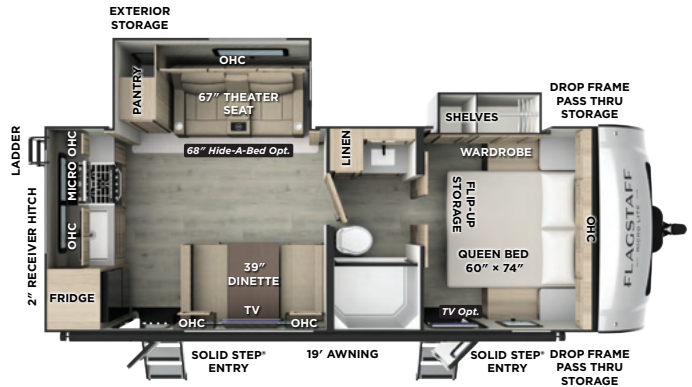
UVW: 5971 lb
CCC: 1689 lb
Hitch Weight: 660 lb
Exterior Length: 25' 10"



25SRK



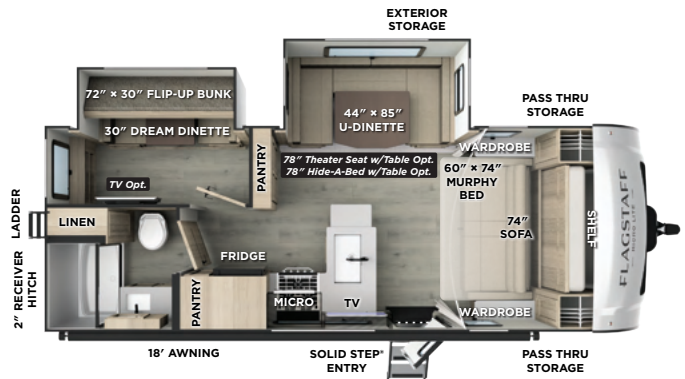
UVW: 5852 lb
CCC: 1829 lb
Hitch Weight: 681 lb
Exterior Length: 25' 10"



25FBH

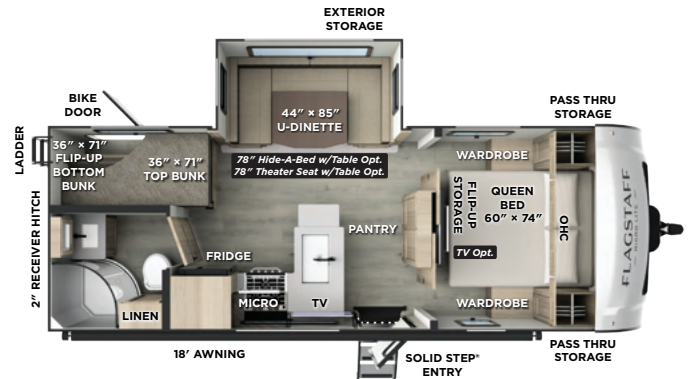


UVW: 6009 lb
 CCC: 1651 lb
 Hitch Weight: 660 lb
 Exterior Length: 25' 10"



25DBH

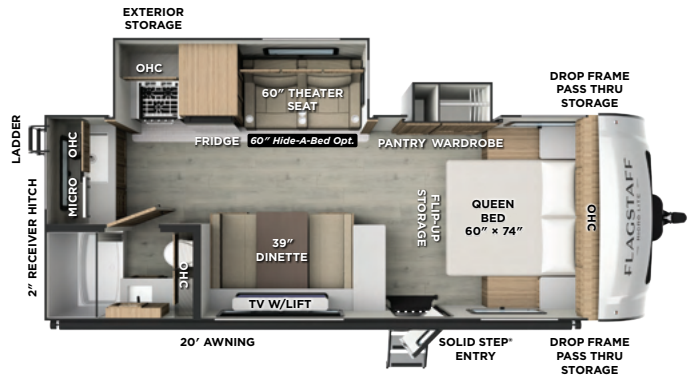
UVW: 5594 lb
 CCC: 1986 lb
 Hitch Weight: 580 lb
 Exterior Length: 25' 10"



25FBD NEW

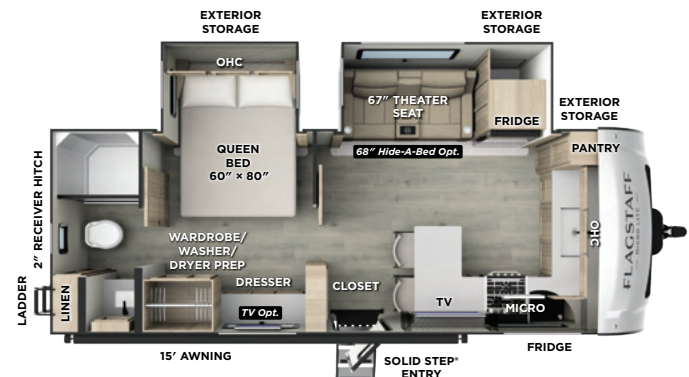


UVW: 5794 lb
 CCC: 1891 lb
 Hitch Weight: 685 lb
 Exterior Length: 25' 9"



25MBR NEW

UVW: 6313 lb
 CCC: 1397 lb
 Hitch Weight: 710 lb
 Exterior Length: 25' 10"



MICRO LITE SPECIFICATIONS

Floorplan	Length	Height	Width	Hitch Weight	Axle Weight	UVW	CCC	Awning	Fresh Water	Gray Water	Black Water
21SRB	22' 4"	10' 3"	8'	680 lb	4020 lb	4759 lb	1630 lb	15'	54 gal	29 gal	29 gal
21FBR5	22' 4"	10' 3"	8'	557 lb	3877 lb	4493 lb	1344 lb	14'	54 gal	29 gal	29 gal
22FBS	23' 10"	10' 11"	8'	634 lb	4439 lb	5132 lb	1662 lb	18'	54 gal	29 gal	29 gal
22SQS	23' 10"	10' 11"	8'	748 lb	4468 lb	5275 lb	1550 lb	15'	54 gal	29 gal	29 gal
25FKB	25' 11"	10' 11"	8'	820 lb	4810 lb	5689 lb	2131 lb	19'	54 gal	58 gal	29 gal
25BRDS	25' 11"	10' 11"	8'	773 lb	4667 lb	5499 lb	1434 lb	18'	54 gal	29 gal	29 gal
25FBLS	25' 10"	10' 11"	8'	697 lb	5000 lb	5756 lb	1941 lb	19'	54 gal	58 gal	29 gal
25B5DS	25' 10"	10' 11"	8'	660 lb	5252 lb	5971 lb	1689 lb	20'	54 gal	29 gal	29 gal
25SRK	25' 10"	10' 11"	8'	681 lb	5112 lb	5852 lb	1829 lb	19'	54 gal	58 gal	29 gal
25FBH	25' 10"	10' 11"	8'	660 lb	5290 lb	6009 lb	1651 lb	18'	54 gal	29 gal	29 gal
25DBH	25' 10"	10' 11"	8'	580 lb	4955 lb	5594 lb	1986 lb	18'	54 gal	29 gal	29 gal
25FBD	25' 9"	10' 11"	8'	685 lb	5050 lb	5794 lb	1891 lb	20'	54 gal	29 gal	29 gal
25MBR	25' 10"	10' 11"	8'	710 lb	5565 lb	6313 lb	1397 lb	15'	54 gal	58 gal	29 gal

SUPERIOR CONSTRUCTION

- Complete Composite Wall Construction
- 5/8" Tongue & Groove Plywood Floor
- Fully Laminated Walkable Roof
- 6-Sided Full-Aluminum Frame
- Aluminum Floor Joists
- Aluminum Dinette, Bed, and Bunk
- Fiberglass Front Cap
- Automotive Glass Windshield

STANDARD FEATURES

- Key-Alike Lock System
- 200W Solar Panel with 1800W Inverter & 30 AMP Charge Controller
- Back-Up Camera Prep
- Maxxair 4-Speed Fan w/Cover
- Frameless Windows
- Winegard Air 360+ Prepped for Wi-Fi
- Slam Latch Baggage Doors
- Additional Solar Prep
- Double Battery Box
- Double 30 lb LP Tanks
- Solid Surface Countertops

SAFETY STANDARDS

- MORryde Strut Assist Steps (N/A 21FBR5)
- Wheel-Banded Tire Pressure Monitoring System (TPMS)
- Dexter® Torflex® Axles
- Nitrogen-Filled Goodyear Endurance Tires w/Balancing Beads

CLIMATE PROTECTION PACKAGE

- 12V Thermostat-Controlled Heated Tanks and Dump Valves
- Radiant Foil In Front Cap Underbelly, and Slides

OPTIONAL FEATURES (NOT PICTURED)

- PSX2 Power Stabilizers
- 2nd A/C (Soft Start; Where Applicable)
- Slide Toppers
- Thermopane Windows
- MORryde Storage Tray (Where Applicable)
- Power Package (Select Models)
 - 5 - 200W Solar Panels
 - 3000W Inverter
 - 460Ah Lithium Battery

GREAT EXPECTATIONS PACKAGE

2 Tone Fiberglass Exterior, High Gloss Front Cap, Automotive Front Windshield, Power Tongue Jack, Stabilizer Jacks, Composite Structural Exterior Walls, Vacuum Laminated Roof, Aluminum Cage Construction, Frameless Windows, Slam Latch Baggage Doors w/Magnetic Catch, 15,000 BTU A/C, Enclosed Underbelly w/Thermostatically Controlled Heated Holding Tanks, Prewire for Backup Camera, Power Awning, 200W Solar Panel w/Inverter & Additional Solar Side Port, AIR 360+ Omnidirectional Antenna w/Wi-Fi Prep, OneControl® APP Monitor Panel, 12V Smart Entertainment TV w/Stereo, Outside Speakers, 12V Refrigerator, Fireplace (Where Available), 35K BTU Furnace (20K BTU 2109S), Microwave, Gas Oven w/Glass Cover, 6 Gallon Quick Recovery Auto Ignite Gas/Electric Waterheater, Dexter® Torflex® Torsion Axles, GOODYEAR Endurance Tires w/TPMS Tire Pressure Monitoring System, Roller Shades, Solid Entry Step Rail, MorRyde Strut Assist Steps (Strut N/A 2 Step), Key Alike Doors, Undermount Kitchen Sink w/High Rise Faucet, Solid Surface Kitchen Countertops, Soft Close Roller Bearing Drawers, Hidden Hinge Cabinet Doors, Rear Ladder, Black Tank Flush, Water Saver Shower Miser, Exterior Hot/Cold Water Port, Water Filter Supplied, Gas Griddle Prep, 2" Accessory Hitch, Spare Tire Carrier & Cover, Power Awning w/ Adjustable Rain Dump & LED Lighting



SCAN TO LEARN RV TERMINOLOGY OR VISIT:

FORESTRIVERINC.COM/RV-DEFINITIONS

SHAMROCK

OPEN UP ADVENTURE



Combining the flexibility of a tent camper with the security of a hard-sided trailer, the Flagstaff Shamrock expandable travel trailer is built for families and groups who need room to stretch out and unwind. With expansive sleeping space for up to nine and generous living areas, the Shamrock offers a unique blend of versatility and comfort. Easy to tow and quick to set up, it's ideal for those who want to maximize their sleeping capacity without upgrading their tow vehicle.



SCAN TO VIEW PRICING AND MORE INFORMATION OR VISIT:

[FORESTRIVERINC.COM/RVS/
FLAGSTAFF-SHAMROCK](https://FORESTRIVERINC.COM/RVS/FLAGSTAFF-SHAMROCK)



SHAMROCK KEY FEATURES

- 5 Year Tent Warranty
- Dual Maxxair 4-Speed Fans with Covers
- 6-Sided Aluminum Framing w/Aluminum Dinettes, Bed Ends & Composite Construction
- One Piece Vacuum Laminated Roof w/High Density Block Foam Insulation
- 5/8" Tongue & Groove Plywood Floors w/One Piece Seamless Linoleum Coverage
- Superior Cable Bed Support—800 lb Capacity

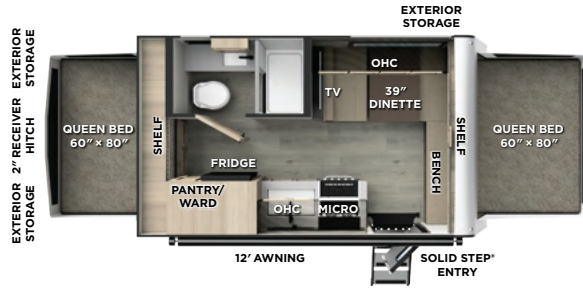
17E

UVW: 3695 lb

CCC: 1723 lb

Hitch Weight: 418 lb

Exterior Length: 18' 9"



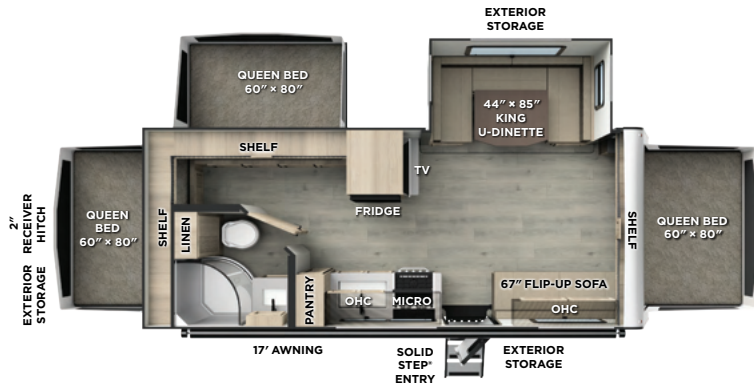
233S

UVW: 4976 lb

CCC: 1702 lb

Hitch Weight: 678 lb

Exterior Length: 24' 10"



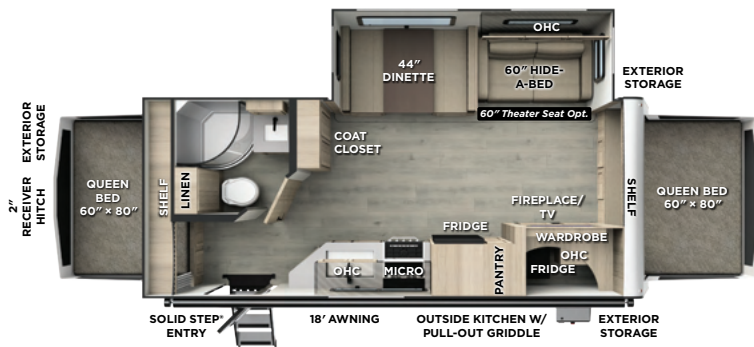
235S

UVW: 5478 lb

CCC: 1448 lb

Hitch Weight: 766 lb

Exterior Length: 24' 10"



SHAMROCK SPECIFICATIONS

Floorplan	Closed Length	Open Length	Hitch Weight	Axle Weight	UVW	CCC	Awning	Fresh Water	Gray Water	Black Water
17E	18' 9"	23' 6"	418 lb	3239 lb	3695 lb	1723 lb	12'	54 gal	29 gal	29 gal
233S	24' 10"	29' 7"	678 lb	4260 lb	4976 lb	1702 lb	17'	54 gal	29 gal	29 gal
235S	24' 10"	29' 7"	766 lb	4674 lb	5478 lb	1448 lb	18'	54 gal	29 gal	29 gal



SUPERIOR CONSTRUCTION

- Complete Composite Wall Construction
- 5/8" Tongue & Groove Plywood Floor
- Fully Laminated Walkable Roof
- 6-Sided Full-Aluminum Frame
- Aluminum Floor Joists
- Aluminum Dinette and Bed Ends
- Easy Reach Lockable Bed Latch System

STANDARD FEATURES

- 200W Solar Panel with 30 AMP Charge Controller
- Back-Up Camera Prep
- Dual Maxxair 4-Speed Fans with Cover
- Winegard Air 360+ Prepped for Wi-Fi
- Key-Alike Lock System
- Slam Latch Baggage Doors
- Additional Solar Prep
- Double Battery Box
- Double 20 lb LP Tanks
- 5-Year Tent Warranty

SAFETY STANDARDS

- Nitrogen-Filled Tires
- Dexter® Axles
- Dexter® Nev-R-Adjust® Brakes
- Dexter® E-Z Lube® Hubs
- MORryde Solid Supported Steps

CLIMATE PROTECTION PACKAGE

- Radiant Foil Insulated Under-belly
- Enclosed Underbelly

OPTIONAL FEATURES (NOT PICTURED)

- Additional 200W Solar Panel
- Slide Toppers
- 2nd A/C (*Soft Start; Where Applicable*)

NEAR NATURE PACKAGE

2 Tone Fiberglass Exterior, Square Bunk Ends w/Attached Boots & Aircraft Cable, Automotive Grade Easy Latch Bunk Latch/Lock, Power Tongue Jack, Stabilizer Jacks, Composite Structural Exterior Walls, Vacuum Laminated Roof, Aluminum Cage Construction, Framed Windows, Slam Latch Baggage Doors w/Magnetic Catch, 15,000 BTU A/C, Enclosed Underbelly, Prewire for Backup Camera, Bunk Fan/Light Combo, Power Awning, 200W Solar Panel & 30amp Controller, Additional Solar Side Port, AIR 360+ Omnidirectional Antenna w/Wi-Fi Prep, 12V Smart TV, 12V Refrigerator, Fireplace (Where Available), Microwave, Gas Oven w/Glass Cover, 35K Furnace, 2 Maxxair Vents w/Covers, 6 Gallon Quick Recovery Auto Ignite Gas/Electric Water Heater, Endurance Tires, Roller Shades, Key Alike Doors, Residential Look Kitchen Countertops w/ Undermount Sink, Soft Close Roller Bearing Drawers, Hidden Hinge Cabinet Doors, Black Tank Flush, Water Saver Shower Miser, Water Filter Supplied, Exterior Hot/Cold Water Port, Gas Griddle Prep, 2" Accessory Hitch, Spare Tire Carrier & Cover

235S SHAMROCK ONLY

Fireplace Standard, Griddle Installed



SCAN TO LEARN RV TERMINOLOGY OR VISIT:

FORESTRIVERINC.COM/RV-DEFINITIONS

SUPER LITE

LIGHTWEIGHT BUILD, HEAVYWEIGHT FEATURES



The Flagstaff Super Lite travel trailer strikes the perfect balance between size, style, and substance. Designed for travelers who crave upscale features in a towable package, the Super Lite delivers residential-style amenities, spacious floorplans, and refined finishes—all without weighing you down. Whether you're setting up for a weekend at the lake or a cross-country escape, this model brings premium comfort to your adventures without compromise.



SCAN TO VIEW PRICING AND MORE INFORMATION OR VISIT:

FORESTRIVERINC.COM/RVS/FLAGSTAFF-SUPER-LITE



29SRL



29DBH



26RBWS



26SRD

SUPER LITE KEY FEATURES

- 6-Sided Aluminum Framing w/Aluminum Dinettes, Bed Bases & Composite Construction
- One Piece Vacuum Laminated Roof w/High Density Block Foam Insulation
- 5/8" Tongue & Groove Plywood Floors w/One Piece Seamless Linoleum Coverage
- Goodyear Endurance Tires
- Dexter® Torflex® Axles
- Balance Beads & Wheel-Banded Tire Pressure Monitoring System (TPMS)
- MORryde Solid Steps & Extended Entry Door Grab Handle

26RBWS



UVW: 6550 lb

CCC: 1992 lb

Hitch Weight: 742 lb

Exterior Length: 29' 9"



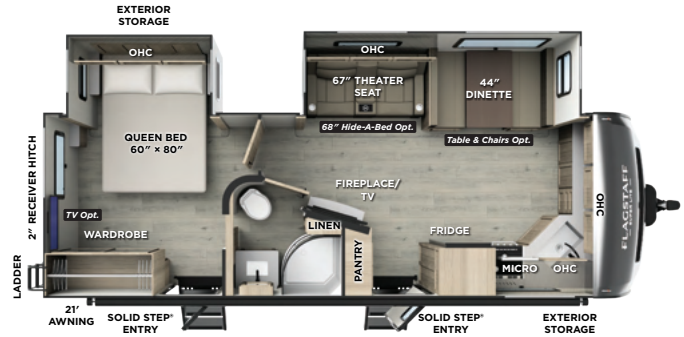
26FKBS

UVW: 6876 lb

CCC: 1826 lb

Hitch Weight: 902 lb

Exterior Length: 29' 8"



26SRD

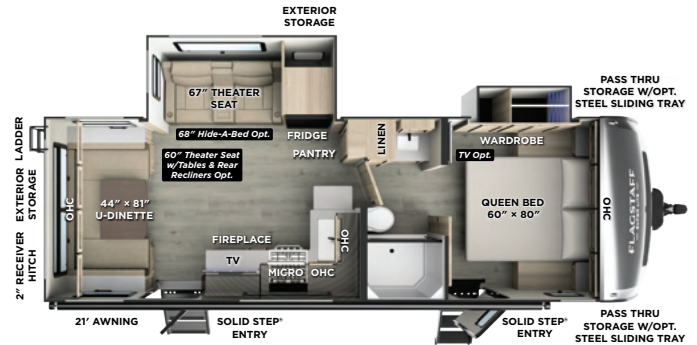


UVW: 6554 lb

CCC: 1920 lb

Hitch Weight: 674 lb

Exterior Length: 29' 9"



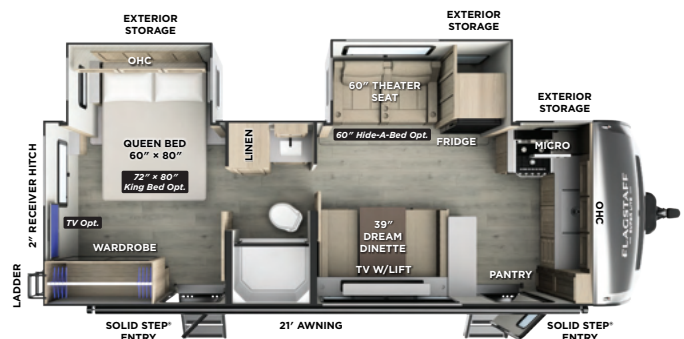
26SFK

UVW: 6834 lb

CCC: 1791 lb

Hitch Weight: 825 lb

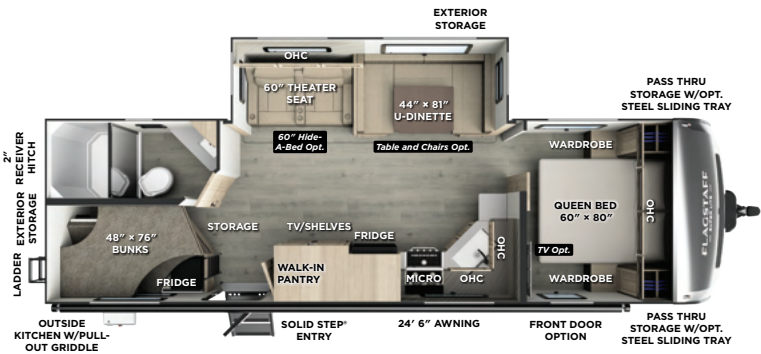
Exterior Length: 29' 8"



27DBH



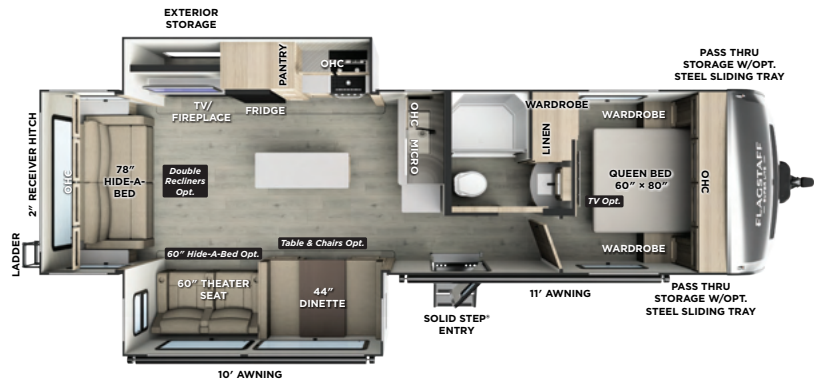
UVW: 7059 lb
 CCC: 1531 lb
 Hitch Weight: 790 lb
 Exterior Length: 32' 10"



29RLKS



UVW: 8149 lb
 CCC: 1840 lb
 Hitch Weight: 864 lb
 Exterior Length: 35' 4"



29SRL



UVW: 7873 lb
 CCC: 2076 lb
 Hitch Weight: 930 lb
 Exterior Length: 35' 4"



POWER PACKAGE



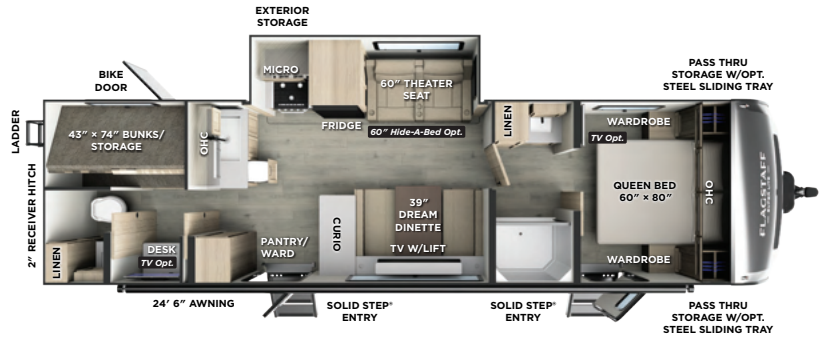
- 15A Receptacle Charging with Combimaster Power Sharing Feature
- 3500W Inverter/Charger with 160A Charging Capacity
- 13,500 BTU Soft Start Power Saver A/C
- 5" Touchscreen Monitor
- 50A DC/DC Charger
- 460Ah Mastervolt Lithium Battery
- Integrated 60A MPPT Charge Controller
- (6) 200W GoPower® Solar Panels
- Centralized System Disconnect Switch

Available in Select Super Lite Models Only

29DBH

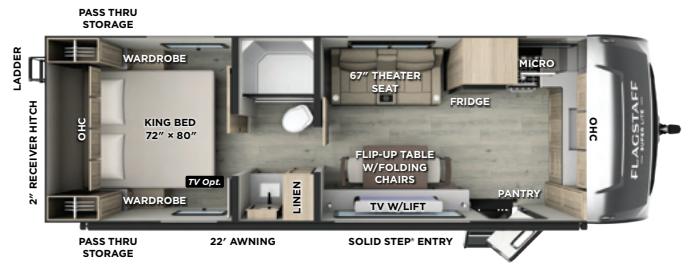


UVW: 7872 lb
 CCC: 2028 lb
 Hitch Weight: 920 lb
 Exterior Length: 35' 5"



30FKT NEW

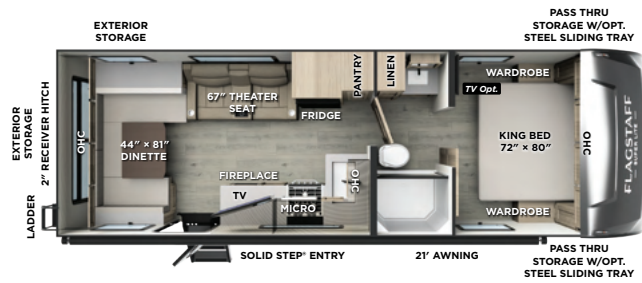
UVW: 6259 lb
 CCC: 2315 lb
 Hitch Weight: 774 lb
 Exterior Length: 29' 10"



30RDT NEW



UVW: 6239 lb
 CCC: 2362 lb
 Hitch Weight: 801 lb
 Exterior Length: 29' 11"



SUPER LITE SPECIFICATIONS

Floorplan	Length	Height	Width	Hitch Weight	Axle Weight	UVW	CCC	Awning	Fresh Water	Gray Water	Black Water
26RBWS	29' 9"	11' 2"	8'	742 lb	5770 lb	6550 lb	1992 lb	21'	54 gal	90 gal	45 gal
26FKBS	29' 8"	11' 2"	8'	902 lb	5936 lb	6876 lb	1826 lb	21'	54 gal	90 gal	45 gal
26SRD	29' 9"	11' 3"	8'	674 lb	5842 lb	6554 lb	1920 lb	21'	54 gal	45 gal	45 gal
26SFK	29' 8"	11' 3"	8'	825 lb	5950 lb	6834 lb	1791 lb	21'	54 gal	90 gal	45 gal
27DBH	32' 10"	11' 2"	8'	790 lb	6210 lb	7059 lb	1531 lb	24' 6"	54 gal	90 gal	45 gal
29RLKS	35' 4"	11' 3"	8'	864 lb	7247 lb	8149 lb	1840 lb	F11', R10'	54 gal	45 gal	45 gal
29SRL	35' 4"	11' 2"	8'	930 lb	6905 lb	7873 lb	2076 lb	19'	54 gal	45 gal	45 gal
29DBH	35' 5"	11' 2"	8'	920 lb	6893 lb	7872 lb	2028 lb	24' 6"	54 gal	90 gal	90 gal
30FKT	29' 10"	11' 3"	8' 4"	774 lb	5426 lb	6259 lb	2315 lb	20'	54 gal	45 gal	45 gal
30RDT	29' 11"	11' 3"	8' 4"	801 lb	5379 lb	6239 lb	2362 lb	21'	54 gal	45 gal	45 gal

SUPERIOR CONSTRUCTION

- Complete Composite Wall Construction
- Fully Laminated Walkable Roof
- 6-Sided Full-Aluminum Frame
- 5/8" Tongue & Groove Plywood Floor
- Aluminum Floor Joists
- Aluminum Dinette, Bed, and Bunk
- Painted Fiberglass Front Cap with Clear Coat
- Automotive Glass Windshield

STANDARD FEATURES

- 200W Solar Panel w/30 AMP Charge Controller
- Back-Up Camera Prep
- Maxxair 4-Speed Fan with Cover
- Winegard Air 360+ Prepped for Wi-Fi
- Framed Windows
- Key-Alike Lock System w/Slam Latch Baggage Doors
- Additional Solar Prep
- Double Battery Box
- Double 20 lb LP Tanks

SAFETY STANDARDS

- Dexter® Torflex® Axles
- Wheel-Banded Tire Pressure Monitoring System (TPMS)
- Nitrogen-Filled Goodyear Endurance Tires with Balancing Beads
- MORryde Solid Supported Steps

CLIMATE PROTECTION PACKAGE

- 12V Thermostat-Controlled Heated Tanks and Dump Valves
- Radiant Foil In Underbelly, Front Caps, and Slides

OPTIONAL FEATURES (NOT PICTURED)

- Power Package (Where Applicable)
- Additional 200W Solar Panel
- Slide Toppers
- 2nd 15K BTU A/C
- Dexter® Tow Assist ABS and Sway Mitigation System
- MORryde Sliding Storage Tray (Where Applicable)
- Thermopane Windows

COAST TO COAST PACKAGE

Clay Fiberglass Exterior, High Gloss Fiberglass Cap, Composite Structural Exterior Walls, Vacuum Laminated Roof, Aluminum Cage Construction, Front Windshield, Slam Latch Baggage Doors w/Magnetic Catch, Framed Windows, 15,000 BTU A/C, Enclosed Underbelly w/Thermostatically Controlled Heated Holding Tanks, Prewire for Backup Camera, Power Awning w/Adjustable Rain Dump & LED Lighting, 200W Solar Panel & Additional Solar Side Port, AIR 360+ Omnidirectional Antenna w/Wi-Fi Prep, OneControl® APP Monitor Panel, Smart TV, Bunkroom Smart Entertainment TV, Speakers w/Bluetooth® Connection, Outside Speakers, 50AMP Service, 12V Refrigerator, Fireplace (Where Available), Microwave, Gas Oven w/Glass Cover, 35K BTU Furnace, 6 Gallon Quick Recovery Auto Ignite Gas/Electric Water Heater, Dexter® Torflex® Torsion Axles, GOODYEAR Endurance Tires w/TPMS Tire Pressure Monitoring System, Roller Shades, Key Alike Doors, Undermount Kitchen Sink w/High Rise Faucet, Solid Surface Kitchen Countertops, Soft Close Roller Bearing Drawers, Hidden Hinge Cabinet Doors, Rear Ladder, Black Tank Flush, Shower Miser, Exterior Hot/Cold Water Port, Water Filter Supplied, Gas Griddle Prep, 2" Accessory Hitch, Spare Tire Carrier, Power Tongue Jack, Dual 20 LP Tanks, Solid Entry Step Rail, Lino Flooring in Slideout

PLATINUM PACKAGE **NEW**

- 5.3 Auto-Leveling
- Frameless Windows
- 1800W Inverter
- MORryde Strut Assist Entry Step
- Dual 30 lb LP Tanks

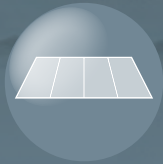


SCAN TO LEARN RV TERMINOLOGY OR VISIT:

FORESTRIVERINC.COM/RV-DEFINITIONS

THE FLAGSTAFF PROMISE

Flagstaff stands behind its craftsmanship with unwavering commitment from start to finish. When you choose Flagstaff, you're choosing an RV backed by our comprehensive limited warranties. For complete details, please consult the written warranty or your Flagstaff dealer.



**LIMITED LIFETIME
ROOFING
WARRANTY**

**Lifetime warranty limited to original owner*



**TWO YEAR
FIBERGLASS
WARRANTY**



**TEN YEAR
TORFLEX® AXLE
WARRANTY**



**ONE YEAR
BUMPER TO BUMPER
WARRANTY**

**MILLERSBURG
MADE**

The story of Flagstaff is deeply intertwined with the town of Millersburg, Indiana. Here, generations of families have contributed to the creation of RVs known for their reliability and lasting value. "Millersburg Made" signifies a commitment to community and a dedication to building RVs you can trust. It's the assurance that your Flagstaff has been built with care, by people who take pride in their work and stand behind every RV that leaves our doors.

EACH NEW FOREST RIVER PURCHASE PROVIDES:

- ✓ Pre-delivery Inspection.
- ✓ Digital Owner's Manual.
- ✓ Free Membership to Forest River Owners Group (FROG). Learn more at www.forestriverfrog.com.
- ✓ A Contribution to Care Camps Foundation www.carecamps.org.
- ✓ 1 Year Free Roadside Assistance from Date of Purchase.



LEARN MORE:

Scan this QR code with your mobile device to learn more about Forest River.



SPECIFICATION DEFINITIONS:

Scan this barcode using a QR reader on your smartphone to learn RV terminology and more!



YOUR **FLAGSTAFF** DEALER