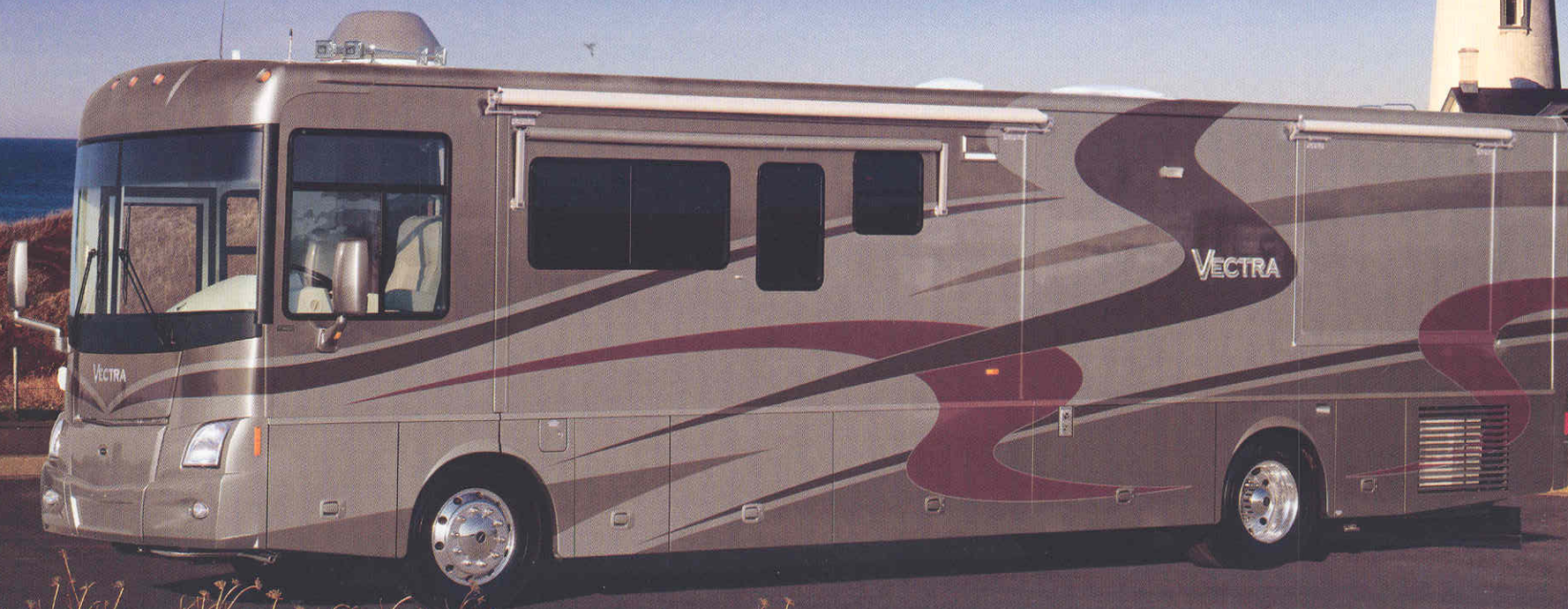


2004 WINNEBAGO VECTRA®

A new era
of diesel
motorhoming
starts here.





40AD-Stone Harbor with Concert Cherry

Diesel pusher performance and comfort.

If you've been waiting for that little something "extra" in a motor home, your wait is over. And there's much more than one "something" in the new 2004 Vectra.

The new Evolution™ chassis, a Winnebago Industries exclusive, is quickly redefining the standards of diesel pusher technology and performance. Our engineers worked closely with Freightliner® to create a chassis with a unique design that provides increased mid-section clearance height, better weight distribution and improved floorplan flexibility. The chassis is fitted with a 330-hp* Caterpillar® 7.2L turbo-charged engine, plus an Allison® 3000 MH six-speed electronic transmission and advanced suspension systems for more responsive driving and handling.

Five distinct floorplans offer an incredible amount of storage, both inside and out. Full-body paint and the electric awning package are standard. Comfort-enhancing amenities include powered sunvisors, front and rear bedroom slideouts, solid-surface countertops, ceramic tile floorcovering in the bath and galley areas, plus the RV Radio®, TrueAir® Residential Central Air Conditioning, the OnePlace™ Systems Center and the PowerLine® Energy Management System.

Diesel motorhoming will never be quite the same. See for yourself. Take the brand-new Vectra for a test-drive.



Entertain the possibilities.

A Sony® 24" flat-screen TV, strategically positioned in a handsome wood-faced cabinet, provides a great view from anywhere in the living area. The 40AD features a Sony 27" flat-screen TV in a hardwood entertainment center. The five-channel QSURROUND™ sound system includes five recessed cube speakers and two base speakers. The amplified antenna, video selection system and stereo DVD/VCR let you select from network programming, movies or premium channels. The available RV digital In-Motion satellite dish allows uninterrupted viewing while you're on the road. The 2,000-watt Heart Interface® inverter lets you enjoy your favorite programs even when you're not connected to shoreline or generator power.

This is living.

The 2004 Vectra whispers comfort at every turn. Sink into the premium Stitchcraft furniture, with available leather upgrades. Or relax in the hoop-base lounge chair next to the wainscoting with chair rail. The dining table can be a cozy table for two or expand to accommodate four. An elegant, residential-style buffet (shown) includes ample storage (40AD only). Interior options include two wood and three color choices. Solid wood cabinet faces, doors and drawers also feature a catalyzed protective topcoat process that provides a durable, luxurious satin finish. Dual-glazed windows and available window awnings offer increased thermal efficiency while standard day/night pleated shades in the lounge, dinette and bedroom offer varying levels of light and privacy.

Superior interior climate comfort is maintained with floor-ducted, forced-air heating and ceiling-ducted TrueAir Residential Central Air Conditioning. A standard heat pump provides warmth on cool mornings without running the furnace.

*350-hp Cummins ISC 8.3L is available with 32,000 GVWR.



Sit back and relax.

The Rest Easy® Multi-Position Lounge, shown with available leather, offers seating flexibility and comfort. At the touch of a button, the sofa becomes a relaxing recliner with ottoman. Touch the button again and it's a comfortable, contoured 60" x 75" bed.



Ready for prime time.

You're ready for the big game or your favorite movie with this entertainment center that features a 27" Sony flat-screen TV (40AD). Glass doors above give you easy access to electronics, while wood doors below provide additional storage.

Two plus two.

The dining table provides spacious dining for two and easily expands to accommodate four place settings for entertaining guests.



Bed and breakfast.

The BenchMark™ Full Comfort Dinette is a Winnebago Industries exclusive and features an inner-spring cushioned seat to provide you with the feel and comfort of residential furniture. Flip up the seats to access the large storage space or fold down the table to quickly convert the dinette into a comfy bed.



Dining and more.

The residential-style buffet in the 40AD gives you ample storage. The table expands when you extend the StoreMore® slideout for even more room.



Sink in.

The available Euro recliner comes with an ottoman so you can curl up with a good book or stretch out and watch a movie. (Not available on the 40KD.)



For the King or Queen of the road.

The hoop-base lounge chair is a cozy rocker and a comfortable recliner with footrest. Best of all, it can be easily moved to your favorite spot when you're not traveling. Standard or available on most models.



A recipe for great meals.

The galley features Corian® solid-surface sink covers, countertops and range cover; a large Swanstone™ solid-surface double sink, solid wood cabinet frames and doors, a galley island (on 40AD and 40KD), ceramic tile floorcovering, recessed fluorescent lighting and a separate faucet for the Everpure® water filtration system. The 30" residential microwave convection oven with vented range fan is standard. The G.E. Advantium™ Speedcook microwave is available.

Sweet dreams.

The standard rear bedroom slideout comes with a walk-around queen-size bed, Serta® mattress and underbed storage. Passenger and driver-side windows provide cross ventilation. The built-in wardrobe offers plenty of hanging storage space. A radius-front 19" TV is corner-mounted and tucks into its own cabinet when not in use. Choose the available Audiovox® rear stereo system with AM/FM/CD player and alarm clock.



At your convenience.

The available built-in, combination washer-dryer features multiple wash, time and temperature cycles for a wide variety of fabrics.



Plugged in.

A Black and Decker® rechargeable flashlight and vacuum are conveniently located so you won't be caught in the dark and you'll always be ready for a quick cleanup.



Put it on ice.

A double-door refrigerator with icemaker and the pull-out pantry cabinet are standard. A larger, four-door refrigerator is available. The standard 2,000-watt inverter/charger lets you make ice while you drive.



No dishpan hands.

Clean up quickly with a drawer-style, under-the-counter dishwasher. Available on the 40AD.



Shower in style.

Upscale bath features include a skylight, residential-height porcelain toilet, Corian solid-surface countertops with backsplash, molded sink, one-piece fiberglass shower, textured glass shower door and a ceramic tile floor. The single-control brass shower faucet has a shut-off valve and a Moen® Posi-Temp® feature for consistent water temperature. A variable-speed water pump provides consistent pressure without surging. The 10-gallon water heater can operate on 120-volt AC or LP gas for added convenience.



Adjustable comfort levels.

The available queen-size Sleep Number® Bed by Select Comfort™ is another Winnebago Industries exclusive. Using the hand-held remotes on each side of the bed, you can quickly and independently adjust the mattress firmness level to your ideal level of comfort and support...your Sleep Number, which is Your Key to a Perfect Night's Sleep.™



Command central.

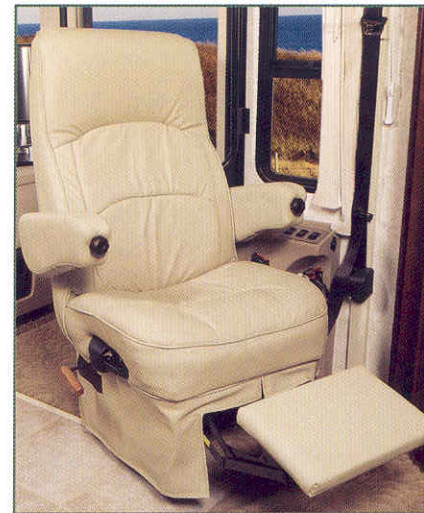
The ergonomically designed dash area places driving controls at your fingertips. The steering wheel is sized for responsive handling and features tilt and telescoping functions. The electronic transmission controls are located on the left-side driver's panel for easy visual reference and operation. Get your bearings or the outside temperature with the electronic compass/thermometer. Bus-style power driver and passenger sunvisors cut the glare at the touch of a button. Other Vectra extras include the sliding driver and passenger windows, driver and passenger map lights and the Sony rearview color monitor system with one-way audio that simplifies backing and maneuvering. Select the available Alpine GPS mapping system to plan your route and stay on course anywhere in North America.



ONE PLACE systems center

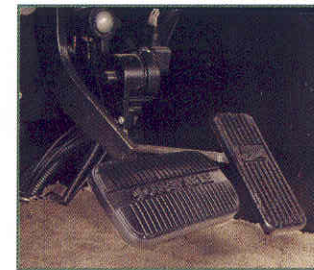
One look.

The OnePlace Systems Center puts vital switches, gauges, levels and controls in one convenient location, so you can check them at a glance.



Cushy support.

High-back, custom-designed Stitchcraft driver and passenger cab seats provide a perfect fit. A convenient footrest comes with the passenger seat. The power stepwell cover closes at the touch of a button to create a flat floor in front of the passenger seat. Ceramic tile in the entry looks great and is easy to keep clean. Popular upgrades include leather and a six-way power assist.



Bring the pedals to you.

Anti-lock air brakes deliver impressive stopping power. The automotive-style brake and accelerator pedals are adjustable at the push of a button to put them in the position that's just right for you.



Two-way radio.

For communication in the campground or added peace of mind on day trips, the four available radios recharge from the house batteries at their built-in charging station. Nickel-metal hydride batteries provide up to 15 hours of standby and 90 minutes of talk time on a single charge.



Trip computer.

The available TripTek™ computer collects, analyzes and saves vehicle data while displaying trip information on the rear vision Sony color monitor. Displays include distance and time to destination, time traveled, fuel economy and a handy pre-trip checklist.

Spread the cool around.

Interior climate control has never been more precise, thanks to Winnebago Industries TrueAir Residential Central Air Conditioning. It utilizes superior cooling technology to supply optimum comfort to every part of the coach. At the heart of the system is a Coleman®-Mach® cooling unit, located below the floor line of the coach. The unit provides a low vehicle profile and center of gravity, plus reduced interior noise and easy access for service. On cool days, the available heat pump provides heat, minimizing the need to use LP.

Power manager.

Keep your electrical system running smoothly, even when operating your central air conditioning on a 30-amp. shoreline, with the PowerLine Energy Management System. It monitors onboard electrical usage and automatically minimizes the nuisance of campground circuit breaker tripping by controlling the operation of "postponable" electrical loads when demand peaks during heavy power usage. As demand is lowered, PowerLine automatically returns power to the secondary appliances and systems.

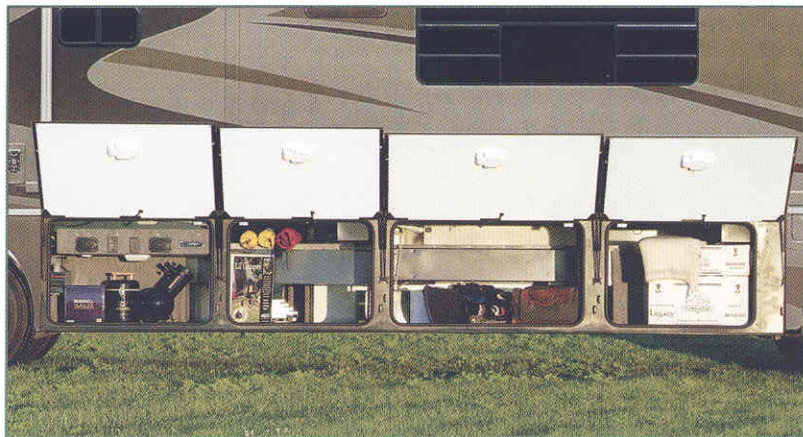


Designed exclusively for RV use.

Winnebago Industries engineers worked closely with the radio manufacturer to create the RV Radio—a radio designed specifically for motor home applications. Vectra's AM/FM stereo radio has a cassette and CD player. Large control knobs and buttons are easy to operate. A weather band feature provides weather updates at the touch of a button.

100 stations on this dial. SIRIUS

Upgrade your listening choices with Sirius™ Satellite Radio programming (requires the available satellite ready radio available fall 2003). It offers 100 channels of digital entertainment, with 60 commercial-free, original music channels. High-altitude satellites deliver crystal clear satellite programming anywhere in the U.S. with no signal fades. And the receiver has full scrolling capabilities that show artist names and song titles. (Sirius Satellite Radio programming requires a subscription.)

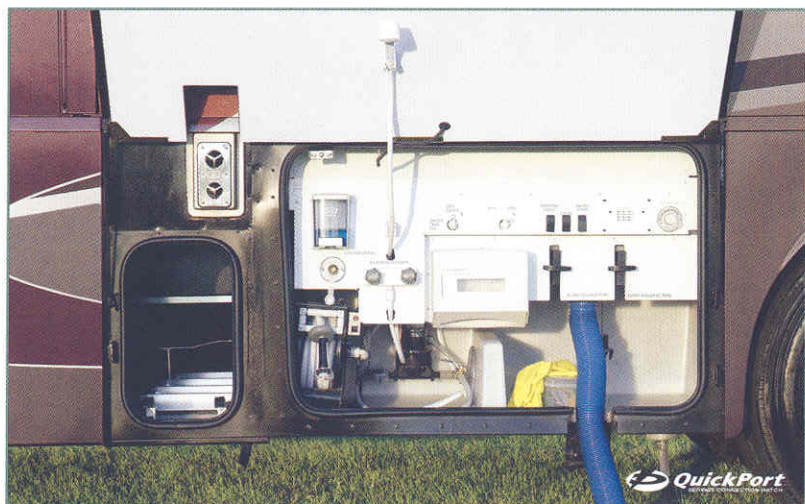


The space race is over.

Thanks in part to the new Evolution Chassis, you'll find 40 percent more exterior storage than a typical diesel pusher. The optional slideout tray makes loading and unloading easier.

Hook up in no time.

Rinse off muddy or sandy gear outside at the exterior wash station. The same heated compartment also houses the major plumbing connections and service points for added convenience. Say goodbye to wrestling cords and hoses through small holes: QuickPort™ Service Connection Hatches make hookups a snap. The sewer hose has a QuickConnect™ coupling valve and holster for easy storage. An automatic water supply hose and automatic power cord reel is available.

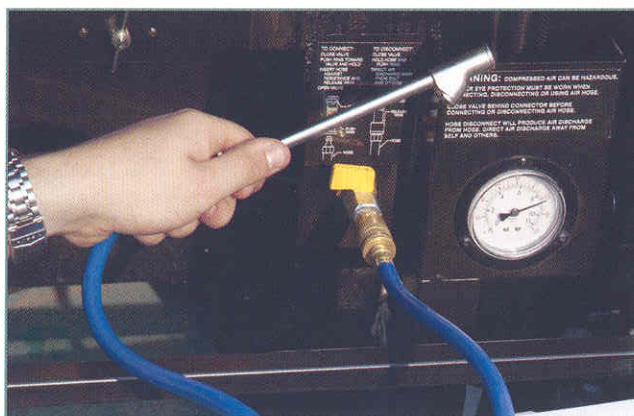


Room to spare.

StoreMore® features large, well-lit exterior storage compartments that are designed to accommodate bulky and odd-shaped items. The compartments extend along with the slideroom for easy access without crawling under the slideroom. The exterior compartment doors open easily thanks to single-paddle latches and gas struts. The doors lock with a remote controlled power lock and KeyOne™.

See more.

Vectra features exterior mirrors with increased surface area. The result is mirrors with a greater field of vision. The driver mirror features a break-away design to fold in for tight storage spaces. Exterior rearview electric mirrors come with electric defrost and turn signals. The convex bottom area reduces blind spots.



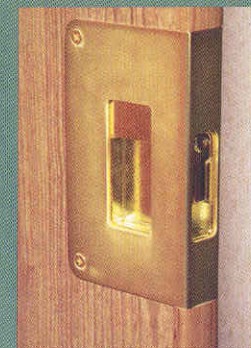
Auxiliary air supply.

A convenient auxiliary air connection with detachable 50-ft. hose is standard and provides a ready source of compressed air.



You've got power.

Enjoy electrical power wherever your travels take you with the standard 7,500-watt Onan® Quiet Diesel™ generator. For easy servicing, it pulls out on manual slides.



A friendly lock.

The new three-way pocket door latch allows you to lock or unlock the bedroom pocket door from either side when the door is pulled out. And it also locks the door in place when the door is tucked away.



One key.

No more fumbling for the right key thanks to the innovative KeyOne lock system. A single, double-bitted key opens most exterior compartments and doors so you won't have to go through a pocket full of keys. When unlocking doors, the exterior porch light and interior map lights stay on for 20 seconds. A power door lock with keyless remote is standard.

Easy maintenance.

Draining air-line system condensation is a recommended service procedure on all vehicles that utilize air brakes and air suspension. Vectra has automatic system dryers and heated air system drains that incorporate remote lanyard controls. This eliminates the need to crawl under the chassis to perform this routine maintenance function.

Shine a light.

An available roof-mounted spotlight features a wireless remote.

No gymnastics required.

The air filter and fluid level check-points are in easy-to-reach locations.

Tow smarter.

A 10,000-lb. hitch and seven-way trailer wiring connector lets you tow either a car or boat.



Road smoother.

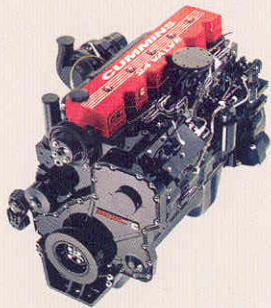
The independent front suspension (IFS) on the Vectra can make any road seem like a newly paved highway. (Available on 40' models.) IFS provides greater lateral stability, eliminates bump steer and lets each wheel move independently through its range of motion. Each tire maintains better contact with the road and you get a smooth ride comparable to that of a luxury sedan.

Either side.

Fuel fill doors are on both sides of the Vectra for easy filling at fuel bays.

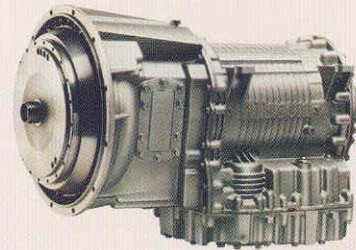
This chassis is evolved.

The brand-new Evolution chassis from Freightliner is a Winnebago Industries exclusive. Its one-piece, precision-formed chassis rails feature an innovative design. The result is increased and more visible storage space and exceptional ride and handling. The Vectra also features a power-assist, adjustable steering column and adjustable brake and accelerator pedals.



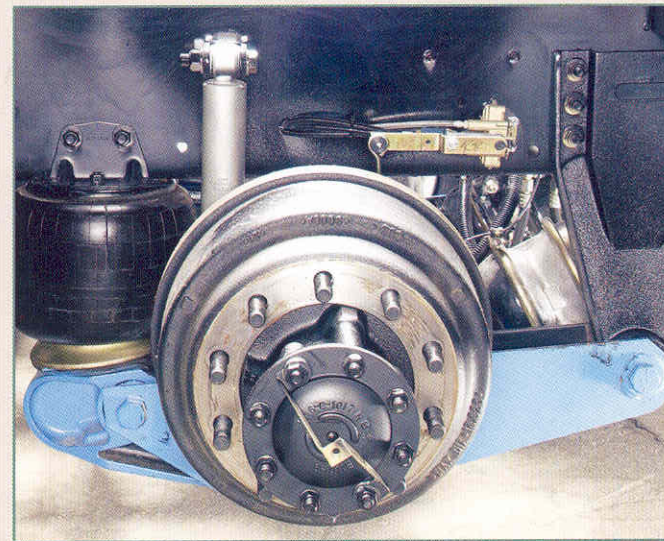
More than enough horses.

Rugged diesel power provides exceptional torque and economy. Engine offerings all include advanced electronic controls for superior performance and fuel economy. They include the standard 330-hp Caterpillar diesel engine or an optional 350-hp Cummins diesel (shown) with IFS on all 40' models. The standard engine exhaust brake enables you to use the engine to slow the vehicle, promoting longer brake life.



These gears adjust to yours.

The 3,000 MH six-speed Allison electronic control transmission is a proven performer. Smart logic enables it to "learn" your driving habits and fine-tune shift points accordingly for maximum performance.



Floating on air.

The rear air suspension places larger air springs in a wide-track stance just inboard of the rear wheels. More efficient than less-advanced multiple smallbag systems, it offers optimum stability while protecting the air springs from road debris kicked up by the tires. The air spring cushions the vehicle body from the travel movement of the rear axle. As the axle moves in relation to the coach, air pressure is automatically released or introduced to the air spring to maintain the proper ride height.

Built to last.

When purchasing a new motor home, you may think that a chassis is a chassis is a chassis. But the chassis your RV is built on has a crucial impact on your overall experience. When it comes to a chassis, the manufacturer's history of design innovation with a proven track record of performance and a nationwide service network are significant factors to consider.

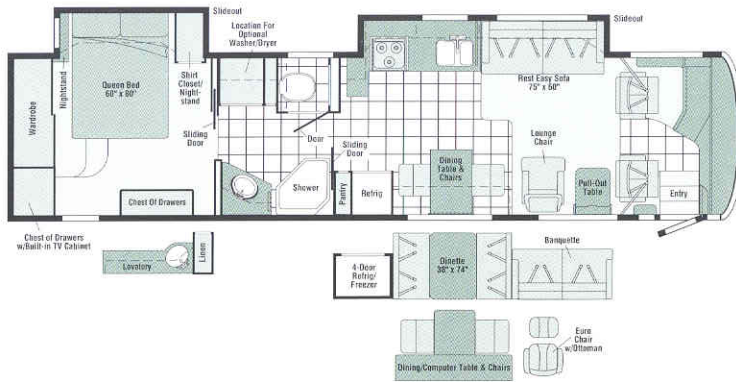
The Winnebago Vectra is offered on the exclusive Evolution chassis. This chassis was specifically designed and created by Winnebago Industries and Freightliner for its intended RV application. Freightliner has a well-known reputation for providing top-quality chassis and vehicles. This reputation and expertise is evident as you take the wheel of a Vectra and experience the driving comfort, responsive handling and smooth ride. On top of that, you'll have access to a network of more than 350 Freightliner chassis service centers, many open 24 hours a day, seven days a week.



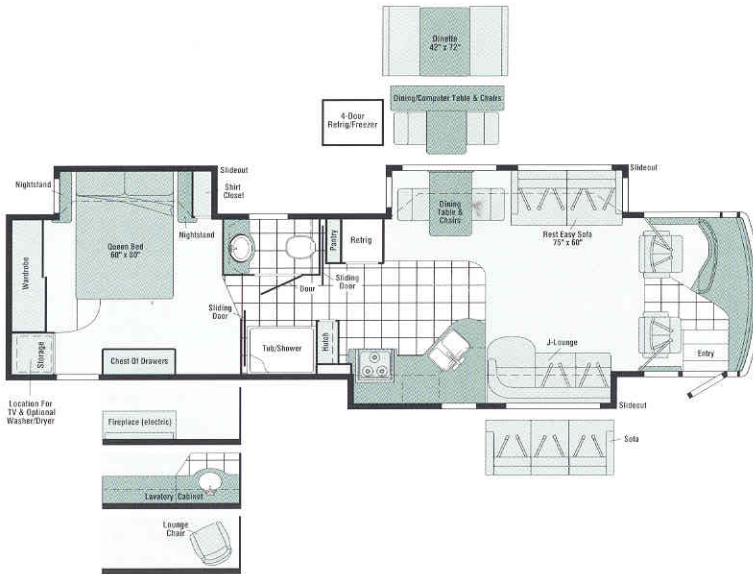
A subsidiary of FREIGHTLINER CORPORATION

FLOORPLANS

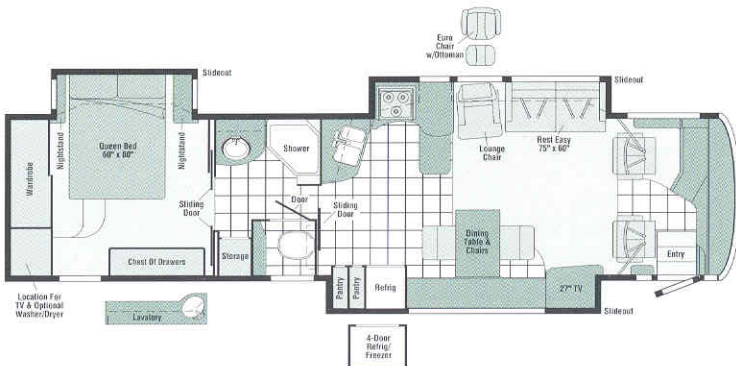
INTERIORS



Model 40WD



Model 40KD



Model 40AD



Green Slate



Concert Cherry



Stone Harbor



Portsmouth Oak



Windswept



The outside story.

Vectra's one-piece fiberglass sidewall is amazingly tough—typical for Winnebago Industries design. Standard features include hydraulic jacks to keep your Vectra super-stable and level when parked, stylized aluminum wheels to resist corrosion over the long haul and a 10,000-lb. drawbar. A full-width, rear mud guard is available.

2004 Winnebago Vectra® Specifications

	36GD	40QD	40WD	40KD	40AD
Length	36'5"	39'8"	39'8"	39'8"	39'8"
Exterior Height ^a	11'5"	11'5"	11'5"	11'5"	11'5"
Exterior Width ^b	8'5.5"	8'5.5"	8'5.5"	8'5.5"	8'5.5"
Exterior Storage ^c (cu. ft.)	212	212	212	212	212
Interior Height	6'8"	6'8"	6'8"	6'8"	6'8"
Interior Width	8'0.5"	8'0.5"	8'0.5"	8'0.5"	8'0.5"
Fresh Water Capacity w/Heater ^d (gal.)	89	89	89	89	89
Holding Tank Capacity – Black/Gray (gal.)	52/48	52/48	52/48	52/48	52/48
LP Capacity ^e (gal.)	31	31	31	31	31
Fuel Capacity (gal.)	100	100	100	100	100
GCWR (lbs.)	37,910	42,000	42,000	42,000	42,000
GVWR (lbs.)	27,910	32,000	32,000	32,000	32,000
GAWR – Front (lbs.)	10,410	12,000	12,000	12,000	12,000
GAWR – Rear (lbs.)	17,500	20,000	20,000	20,000	20,000
Wheelbase	228"	267"	267"	267"	267"

Standard - S Optional - O

36GD 40QD 40WD 40KD 40AD

AUTOMOTIVE/CHASSIS

Chassis EVOLUTION Freightliner, Caterpillar 7.2L turbo-charged diesel 330-hp, rear radiator, Allison 6-speed electronic 3000 MH transmission, NeWay® front & rear air suspension, 160-amp. alternator, four-wheel ABS, exhaust brake				S	
Chassis EVOLUTION Freightliner, Caterpillar 7.2L turbo-charged diesel 330-hp, side radiator, Allison 6-speed electronic 3000 MH transmission, NeWay front & rear air suspension, 160-amp. alternator, four-wheel ABS, exhaust brake		S	S	S	S
Chassis EVOLUTION Freightliner, Caterpillar 7.2L turbo-charged diesel 330-hp, side radiator, Allison 6-speed electronic 3000 MH transmission, ZF-IFS front air suspension, NeWay rear air suspension, 160-amp. alternator, four-wheel ABS, exhaust brake		O	O	O	O
Chassis EVOLUTION Freightliner, Cummins® ISC 8.3L turbo-charged diesel 350-hp, side radiator, Allison 6-speed electronic 3000 MH transmission, ZF-IFS front air suspension, NeWay rear air suspension, 160-amp. alternator, four-wheel ABS, exhaust brake		O	O	O	O
Air Accessory Manifold , quick connect, 50' air hose, pressure gauge, manual air shut off, Leveling Jacks hydraulic, manual control, Tire Tools wrench & leverage bar, Trailer Hitch ^f 10,000-lbs. drawbar/500-lbs. maximum vertical tongue weight & wiring with 7-way connectors, Wheels stylized aluminum	S	S	S	S	S

CAB AREA AND DRIVER CONVENIENCES

Cab Seats (Fabric) w/3-point adjustable seat belts, armrests, footrests (passenger), lumbar support, multi-adjustable slide/recline & swivel, Compass electronic w/outdoor thermometer, Console Center Cabinet , Cruise Control , Defroster Fans (2) auxiliary 2-speed w/instrument panel switch, Exhaust Brake Control , Floor Mat driver, carpet, Hood Release , Map Lights (2) , Monitor System rearview, color, single camera & 1-way audio, Sony, Power Door Locks keyless entry w/remote, Powerpoints (2) 12-volt, Shades (front) wraparound, pleated w/pull cords, light filtering, cab windows, Steering Wheel custom SmartWheel™, Sunvisors (2) powered, Trim Panel driver & passenger sides, Window (driver) full slider w/screen, dual-glazed, Window (passenger) partial slider w/screen, dual-glazed, Windshield Wipers intermittent	S	S	S	S	S
----------------------------------------------------------------------------------------------------------------------------------------------------------------------------------------------------------------------------------------------------------------------------------------------------------------------------------------------------------------------------------------------------------------------------------------------------------------------------------------------------------------------------------------------------------------------------------------------------------------------------------------------------------------------------------------------------------------------------------------------------------------------------------------------------------------------------------------------------------------------------------------------------------------------------------------------------------------------------------------	---	---	---	---	---

	36GD	40QD	40WD	40KD	40AD
Cab Seats (Leather)	O	O	O	O	O
Cab Seats 6-way power assist, driver and passenger	O	O	O	O	O
Cab Seats 6-way power assist, driver	O	O	O	O	O
GPS Navigation System	O	O	O	O	O
Spotlight roof-mounted w/wireless remote	O	O	O	O	O
Trip Computer TripTek	O	O	O	O	O

ENTERTAINMENT

CB Prep antenna, antenna lead, 12-volt power supply, Entertainment Center (Exterior) AM/FM radio, CD player w/remote, DC receptacle, AC duplex receptacle, AM radio, TV jack, radio antenna, speakers (2), lockable compartment, MP3/CD (Cab) AM/FM stereo cassette/CD, roof-mounted flexible rubber antenna, speakers (4), weather band, Radio Power Switch main/auxiliary battery, Satellite System Ready , Sound System deluxe, w/5-channel QS surround sound, amplifier, cube speakers (5), bass speakers (2), Telephone input & interior jacks, TV Enhancement Package antenna (amplified), interior jack(s), coax wiring, cable input, exterior jack, reminder light, TV 19" AC Color stereo w/remote, bedroom, RCA®, VCR/DVD w/remote, ^g Video Selection System	S	S	S	S	S
Compact Multi-disc Changer w/remote & 10-disc changer	O	O	O	O	O
Radios (4) 2-way	O	O	O	O	O
Satellite Dish ^d RV digital, In-Motion	O	O	O	O	O
Satellite Dish RV digital, power	O	O	O	O	O
Satellite Dish Antenna RV digital, manual, elevation sensing unit	O	O	O	O	O
Satellite Radio (available fall 2003), Sirius	O	O	O	O	O
Stereo System (Bedroom) ^d AM/FM CD player, alarm clock	O	O	O	O	O
TV 24" AC Color flat screen, stereo w/remote, front cab, Sony	S	S	S	S	
TV 27" AC Color flat screen, stereo w/remote, front slideout, Sony					S

INTERIOR

Accessory Package rechargeable flashlight, rechargeable hand-held vacuum cleaner,	S	S	S	S	S
Ceiling vinyl, Curtain front wraparound, pleated w/pull cords, Light wall lamp, Lights ceiling w/wall switches, incandescent, Lights fluorescent, recessed, galley, dinette, lounge w/2-way wall switches, Lights reading, auxiliary, Shades pleated, day/night, Sliding Stepwell Cover Panel powered, Windows dual-glazed/thermo-insulated					
Cupholder(s)			S	S	
Picture				S	

CABINERY

Concert Cherry stile-and-rail construction w/raised-panel inserts	O	O	O	O	O
Portsmouth Oak stile-and-rail construction w/raised-panel inserts	O	O	O	O	O

COUNTERTOPS

Solid-surface galley & bath, Corian	S	S	S	S	S
--------------------------------------------	---	---	---	---	---

FLOORCOVERING

Carpeting w/pad, Ceramic Tile galley, bath & cab	S	S	S	S	S
----------------------------------------------------------------	---	---	---	---	---

Standard - S	Optional - O	36GD	40QD	40WD	40KD	40AD
FURNITURE						
Banquette ^d (Fabric) w/throw pillows		O		O		
Banquette ^d (Leather) w/throw pillows		O		O		
BenchMark [®] Full Comfort Dinette w/access to storage below		O	O	O	O	
Buffet cabinet with wood top						S
Buffet cabinet with solid-surface top, Corian						O
Chair Lounge (Fabric) hoop-base, decorator lamp w/table						S
Chair Lounge (Fabric) hoop-base, cabinet w/table		S		S		
Chair Lounge (Fabric) hoop-base, cabinet w/sliding top and storage underneath			S			
Chair Lounge (Leather) hoop-base		O	O	O	O	O
Dining Table & Chairs (2) free standing, (2) folding		S	S	S	S	S
J-Love Seat (Fabric) bottom storage drawer, Flexsteel [®]			O		S	
J-Love Seat (Leather) bottom storage drawer, Flexsteel			O		O	
Lounge Chair ^d (Leather) Euro w/ottoman		O	O	O		O
Multi-function Table & Chairs (2) free standing, (2) folding		O	O	O	O	
REST EASY [™] Multi-Position Lounge (Fabric or Leather) dual recliners		O	O	O	O	O
REST EASY [™] Multi-Position Lounge ^d (Fabric) w/throw pillows		S	S	S	S	S
REST EASY [™] Multi-Position Lounge ^d (Leather) w/throw pillows		O	O	O	O	O
Sofa (Leather) w/throw pillows			O		O	
GALLEY						
Coffeemaker, Countertop Corian, Faucet single-control w/pull-out sprayer, Moen, Lights fluorescent on ceiling & under cabinet, Microwave/Convection Oven w/exterior vent range fan, residential 30" Sharp, Mirror(s), Pantry, Range Cover flush-mounted (countertop material), Range Top 3-burner w/storage below, recessed, sealed burners, Amana, Refrigerator/Freezer large double-door w/icemaker, Norcold, Roof Vent powered ventilator fan, Silverware Tray, Sink double-bowl, Swanstone,™ molded, w/sink covers (countertop material), Towel Rack wire, Wall Border, Wastepaper Basket, Water Purification System Everpure		S	S	S	S	S
Dishwasher						O O
Island Storage Cabinet						S S
Microwave/Speedcook Oven w/range fan, residential 30" G.E. Advantium		O	O	O	O	O
Range 3-burner w/large oven, glass door w/storage below, recessed, sealed burners, Amana		O	O	O	O	O
Refrigerator/Freezer ^d 4-door w/icemaker, Norcold		O	O	O	O	O
BATH						
Cabinet lavatory, Cabinet linen, Cabinet medicine, Countertop w/ backsplash, Corian, Faucet(s) (lavatory) single-control, Faucet (shower) single-control w/flexible showerhead, Light shower, Lights makeup, Roof Vent insulated, power, Shower w/wall surround, Shower Door textured glass, Skylight, Sink oval, Tissue Holder, Toilet porcelain w/foot pedal & sprayer, Towel Rack 3-rod, Wall Border decorative		S	S	S	S	S
Magazine Rack			S			S
Robe Hook		S		S		S
Shower Package fold-down shower seat, hand-held showerhead		O	O	O	O	O
Sink oval, private toilet area			S			
Towel Bar			S	S	S	S
Towel Ring		S		S	S	S
BEDROOM						
Bed queen, Serta innerspring w/underbed storage (NA 36GD), bedspread, pillows, throw pillow, Cabinet wardrobe, carpeted floor, Ceiling Molding, Headboard, Lights reading, Light decorative ceiling w/dimmer, Nightstand(s), Powerpoint 12-volt receptacle		S	S	S	S	S
Bed Sleep Number queen-size mattress by Select Comfort		O	O	O	O	O
Cabinet lavatory, Cabinet medicine, Faucet (lavatory) dual-control, Lights makeup, Sink oval, Towel Ring						O O
Cabinet linen						O

a The height of each model is based on the curb weight of a typically equipped unit on the standard chassis. The actual height of your vehicle may vary by as much as 2" depending on chassis or equipment variations.
b Vector floorplans feature a wide-body design — over 96". In making your purchase decision, you should be aware that some states restrict access on some or all state roads to 96" in body width. Before making your purchase decision, you should confirm the road usage laws in the states of interest to you.
c Your motor home's load capacity is designated by weight, not by volume, so you cannot necessarily use all available space when loading your motor home.
d Not all items available in combination. See dealer for details.

	36GD	40QD	40WD	40KD	40AD
Chair (Fabric) lounge, swivel, w/ottoman, Flexsteel					S
Chest of Drawers	S		S	S	S
Fireplace electric					O
EXTERIOR					
Air Horns roof-mounted, Awning slideroom cover, Awning ^d patio, entrance door, electric, Awning Rails w/rain gutters, Door entrance w/separate screen door, deadbolt lock, Entrance Door Step single, electric w/doorjamb switch, Full Body Paint Options Slate Blue, Autumnwood, Cypress, Ladder, Lights fog lamps, Light porch w/interior switch, Light under hood, Lights compartment, Light service, driver-side, Lights auxiliary docking lamps, Locking Fuel-fill Door, Mirrors electric remote w/defrost, Mud Flaps (2) rear, Receptacle AC duplex, Sidewall Skin 1-piece smooth fiberglass, high-gloss, Storage Compartments smooth valance panels, trunk liner, gas cylinders, TriMark [®] KeyOne System, paddle latch, lights	S	S	S	S	S
Awning ^d windows	O	O	O	O	O
Compartment Tray slideout	O	O	O	O	O
Mud Guard full-width	O	O	O	O	O
Refrigerator/Freezer (portable) requires slideout tray option		O	O	O	O
Undercoating	O	O	O	O	O
SYSTEMS					
Automotive Heater/Air Conditioner, Auxiliary Start Circuit, Batteries (Coach) (3) ^d deep cycle, Battery (Coach) disconnect system, Battery Charge Control automatic dual, Central Air Heat Pump, Drain 1 1/2" water tank, Electrical Distribution System AC & DC breaker panels, 55-amp. electronic converter/charger, Furnace 40,000 BTU, low profile, Generator 7,500-watt, Onan Quiet Diesel, Generator/Shoreline Automatic Changeover Switch, Inverter/Charger DC/AC, 2,000-watt w/remote panel, ONEPLACE [™] Systems Center wall-mount, battery digital voltmeter, POWERLINE [™] energy management display, generator hourmeter gauge, generator start/stop switch, heating/A/C thermostat, holding tank levels, LP tank level, solar panel/battery charger light,* water heater switch, water heater on light & pilot indicator light, water pump switch, water tank level, Power Cord 50-amp., Service Center (Drainage) drainage valves, holding tank flushing system, 20' sewer hose with QuickCONNECT [™] Coupling Valve, QuickPort [™] Service Connection Hatch, Service Center (Electrical/Water) cable inputs, city water hookup/tank diverter fill, drain for fresh water system, exterior wash station w/pump switch, power cord, shoreline/generator automatic changeover switch, telephone input, Solar Panel 10-watt battery charger, Tank flushing system, black tank only, Tank holding, heated compartment, Tank LP, permanent mount w/gauge, TRUEAIR [™] Residential Central Air Conditioning System, Water Heater 10-gallon electronic ignition, LP gas/110 vac w/Motoraid, Water System Winterization Package water heater bypass valve & siphon tube, Water Hookup city, Water Pump demand, variable speed, Wash Station exterior, Water System Winterizing Valve manual, Water Tank Fill pressurized city hookup w/diverter valve, Water Tank Fill locking, door, Washer/Dryer Prep	S	S	S	S	S
Furnace 25,000 BTU, low profile, secondary					
Vacuum Cleaner central, Dirt Devil [®]	O	O	O	O	O
Vacuum Cleaner portable, Black & Decker	O	O	O	O	O
Washer/Dryer Combination	O	O	O	O	O
SLIDEOUT					
Slideout Room rear w/slideroom cover	S	S	S	S	S
STOREMORE [™] Slideout Room sofa/galley				S	S
STOREMORE [™] Slideout Room sofa/dinette	S	S		S	
Slideout Room J-love seat/galley (40KD), buffet/dinette (40AD)				S	S
SAFETY					
Assist Bar(s) interior, Assist Handle exterior, acrylic, Bumpers front & rear, Detectors/Alarms LP leak, smoke, carbon monoxide, Fire Extinguisher 10 B.C., Ground Fault Interrupter, Light center high-mount brake lamp, Light(s) courtesy w/wall switch(es), Seat Belts cab, 3-point, Seat Belts lap (in selected areas), Window escape, Windshield laminated safety glass	S	S	S	S	S
Security Vault (bedroom) key lockable	O	O	O	O	O
WARRANTY⁹					
12-month/15,000-mile basic limited warranty, ^h 36-month/36,000-mile warranty on structure, ^h 10-year limited parts & labor warranty on roof skin ^h	S	S	S	S	S

e Capacities shown are tank manufacturer's listed water capacity (W.C.). Actual filled LP capacity is 80% of listing due to overfilling prevention device on tank.
f Actual towing capacity is dependent on your particular loading and towing circumstances, which includes the GVWR, GAWR and GCWR, as well as adequate trailer brakes. Please refer to your vehicle's operator's manual for further towing information.
g See separate chassis warranty details provided in owner's packet.
h See your dealer for complete warranty information.
Winnebago Industries' continuing program of product improvement makes specifications, equipment, model availability and prices subject to change without notice. Comparisons to other motor homes are based on the most recent information available.

Not all motor homes are created equal.

As you take a closer look, you'll see that there is much more to the Winnebago Vectra than a long list of standard features and compelling floorplans. Beneath it all you'll find a SuperStructure® foundation of strength and durability, and Winnebago Industries' recognized service and warranty support.



We are committed to service.

We back our motor homes with the best after-the-sale service in the industry.

- 12-month/15,000-mile basic limited warranty
- 36-month/36,000-mile warranty on structure
- Standard 10-year limited parts-and-labor roof skin warranty
- Complimentary 24-hour Roadside Assistance Program
- TripSaver Fast Track Parts. TripSaver guarantees that in-stock warranty parts ship directly to your dealer within 24 hours
- Nationwide dealer service network



Certified quality.

Recreation Vehicle Dealer Association members annually rate RV manufacturers on the quality of their products, and on their sales and service support. Winnebago Industries has achieved the coveted Quality Circle Award every year since its inception, the only RV manufacturer to do so.

Learn more about what sets Winnebago Industries apart.

Ask your dealer for this guide. It will help you learn what makes Winnebago Industries motor homes distinctly superior to other brands.



Warning: Joining WIT has been known to cause excessive fun.

Winnebago-Itasca Travelers (WIT) is a club for owners of Winnebago Industries motor homes. WIT is a great way to meet people and offers you:

- Caravans and rallies
- Local and state group activities
- Benefits for RVers



WINNEBAGO Built proudly by
WINNEBAGO
INDUSTRIES

©2003 Winnebago Industries, Inc., Forest City, IA 50436. Printed in USA.

Seat belts are your most important hookup. Always buckle up.

NYSE listing: WGO

Visit us at www.winnebagoind.com

SUPER STRUCTURE

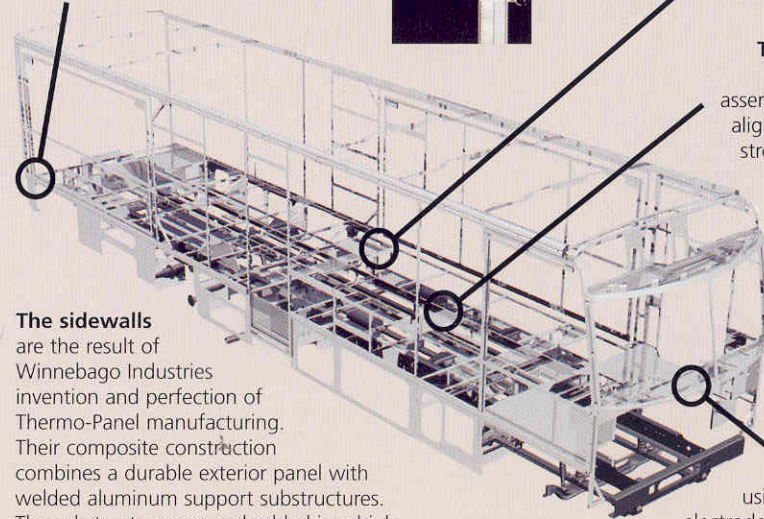
is the term given to Winnebago Industries' structural motor home design and construction. Rather than a single component, it is the culmination of design integration that incorporates steel and aluminum substructures; composite design laminated floor risers; interlocking joint technology; and Thermo-Panel® floor, roof and sidewalls to form a high-strength, durable vehicle body.

Interlocking joint construction utilizes advanced extruded aluminum structural components to create integrated floor-to-sidewall and sidewall-to-roof joints. This design effectively distributes the weight of the walls and roof, making a stronger and more durable body than competitor designs that rely on screws to carry the weight.



Laminated risers feature a welded aluminum core for superior strength and provide a stable base for the floor structure and storage compartments.

The foundation substructure assembly is precision-aligned to maximize strength and cross-coach support as well as durability.



The sidewalls are the result of Winnebago Industries invention and perfection of Thermo-Panel manufacturing. Their composite construction combines a durable exterior panel with welded aluminum support substructures. The substructures are embedded in a high-density block foam insulation core to create a strong, durable, yet lightweight sidewall.

Critical steel components are treated using an advanced electrodeposition coating process that provides superior corrosion protection.

Built to a higher standard.

Vectra features a crowned, one-piece fiberglass roof skin backed with a 10-year limited parts-and-labor roof skin warranty. Fiberglass offers superior strength, attractiveness and durability over rubber roofs found on many competitive models. Over time, rubber roofs are susceptible to chalking, streaking and degradation, and have less puncture and tear resistance than fiberglass.



One-year-old competitor's rubber roof



One-year-old Winnebago Industries fiberglass roof