

BRINKLEY

MODEL Z

MID-SIZED LUXURY FIFTH WHEELS

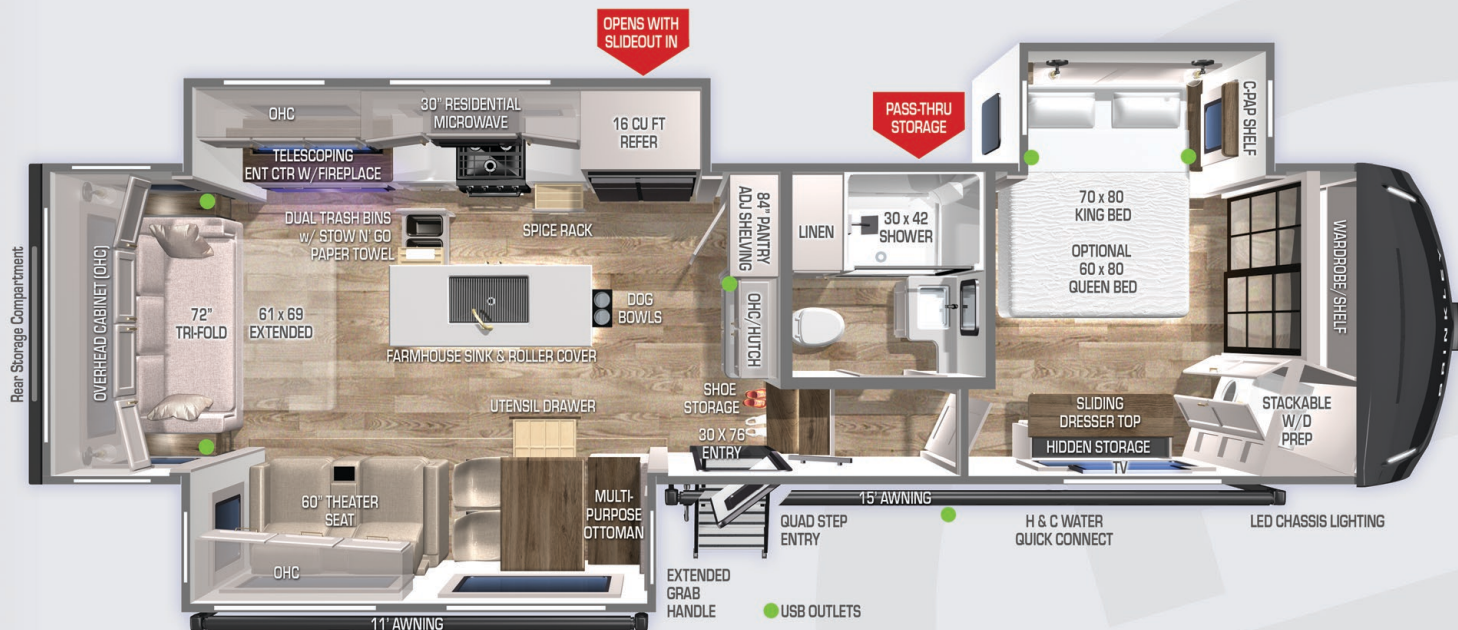
The All-New Brinkley Model Z - Mid-Sized Luxury Fifth Wheel is in a class of its own... Featuring an automotive exterior with a residential interior, yielding NO COMPROMISE. It's destined to change the RV ownership experience. Whether you're a weekend camper or a full-time RVer, Model Z offers features and amenities that will appeal to all camping enthusiasts. From 7k axles, 17.5" H-rated Cooper tires, flush floor slides, and a class-leading 79.5" bed & bath interior height, to name a few. The Model Z has a combination of high-end features unheard of on a Mid-Size Fifth Wheel.

- ✓ RESIDENTIAL INTERIOR: **CONTEMPORARY & REFINED**
- ✓ AUTOMOTIVE EXTERIOR: **MODERN CLEAN STYLING & WINDOWS**
- ✓ MAXIMUM EXTERIOR STORAGE: **OVER 130 CUBIC FEET**
- ✓ 101+ INTELLIGENT FEATURES: **DEVELOPED & TESTED IN THE REAL WORLD**



MODEL Z FLOORPLAN

SPECS / FEATURES **3100**



FEATURES:

- Dual Pull-Out Trash Bins with Integrated Stow N' Go Paper Towel Holder
- Wide Stance Leveling Jacks & Oversized Front Storage
- Residential Frameless Windows with 9" Opening
- Electric Dump Valves
- Flush Floor Slides
- Automotive Grade Front Cap, Lights, & Lens
- 84" Pantry with Adjustable Shelves & Appliance Outlet
- 20 Outlets & 6 USB/USB-C Outlets
- Basement Utility Access w/ Sliding Doors & Motion Lights
- Pull-Out Storage for 'Stewy' with Removable Dog Bowls
- 370W Solar Panel w/ 50AMP MPPT Controller (Inverter Prep & Lithium Ready)

- Residential End Tables with Flip-Up Charging Station & Storage
- 2 - Hot/Cold Outdoor Shower (BOTH sides of coach)
- Tough Ply Storage Area Liner
- Bedside Shelves & Outlets (C-PAP Ready)
- Hidden Sliding Dresser Top Storage Compartment
- Built-in Wire Conduit from Roof to Basement
- Quad Tip-To-Clean Entry Steps with Motion Lights
- Industry First Brass Plumbing Connections
- Industry First Low Maintenance Roof
- Rear Storage Compartment (48"x40"x15")
- Over 130 Cubic Feet of Exterior Storage
- Heavy-Duty 7k lbs. Axles with 8k lbs. Leaf Springs

SPECIFICATIONS:

- UVW – 11,923 lbs.
- GVWR – 14,495 lbs.
- Hitch Weight – 2,142 lbs.
- Exterior Length – 34' 11"
- Overall Height – 12' 9"
- Overall Height with 2nd AC – 13' 2"
- Width – 96"
- Bath & Bedroom Height - 79 ½"
- Slide Height - 76"
- Tire Size – 17.5" H-Rated (16 ply)
- Fresh Water Capacity – 75 gal
- Grey Water Capacity – 90 gal
- Black Water Capacity – 45 gal
- Insulation – Floors R40, Walls R11, Ceiling R40

FACTORY OPTIONS:

- 32" Bedroom TV (Mandatory) \$428
- Queen Bed \$218
- Dual Pane Windows \$1,586
- Low-Profile 2nd Air Conditioner \$1,007

BASE MSRP	\$90,628
Mandatory Packages	\$7,964
STANDARD RUN MSRP (King Bed, 2nd AC)	\$100,240

Optional equipment & props may be shown.
All content is subject to change without notice.
Please consult with your dealer for current information.



For More Information, Photos, & Videos,
& Why Brinkley go to **BrinkleyRV.com**

