

VENETIAN[®]
BY THOR MOTOR COACH

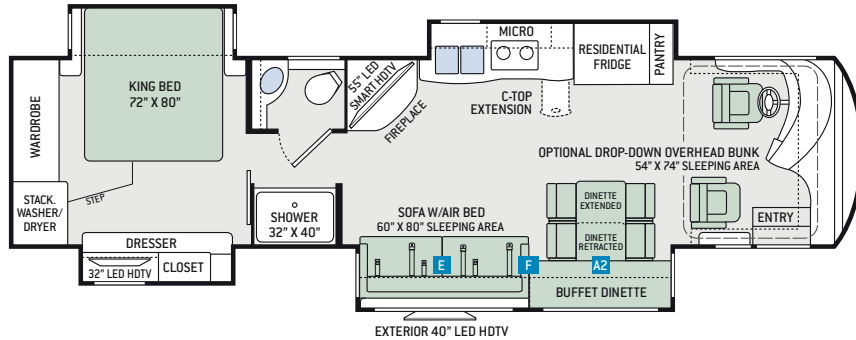


 **THOR**[®]
MOTOR COACH

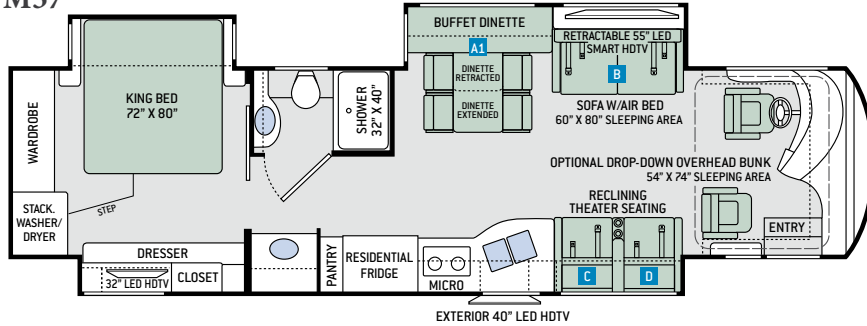
Made to fit.

Floor Plans

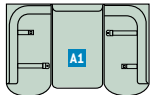
G36 NEW



M37



OPTIONS



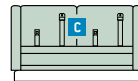
OPTIONAL DREAM DINETTE
48" X 74" SLEEPING AREA



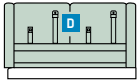
OPTIONAL DREAM DINETTE
40" X 60" SLEEPING AREA



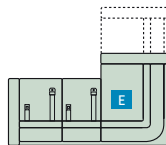
OPTIONAL EURO RECLINER
w/DESKTOP & FIREPLACE



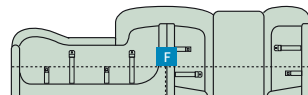
PASSENGER SIDE SOFA w/AIR BED
60" X 80" SLEEPING AREA
(EURO RECLINER w/DESKTOP
& FIREPLACE REQUIRED)



OPTIONAL PASSENGER SIDE
JACK-KNIFE SOFA
40" X 60" SLEEPING AREA

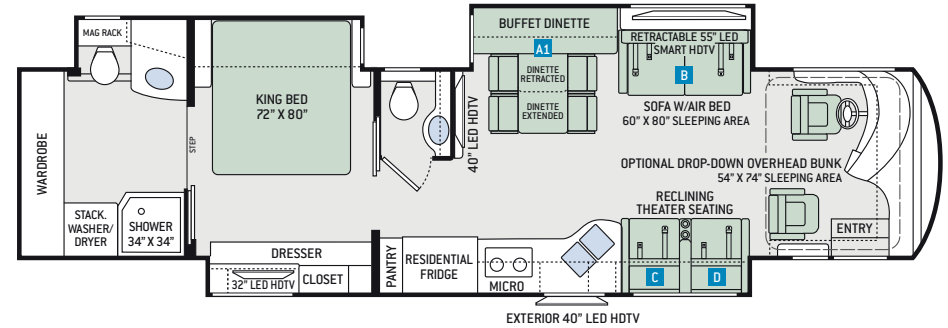


OPTIONAL EXPANDING SOFA w/AIR BED
40" X 68" SLEEPING AREA

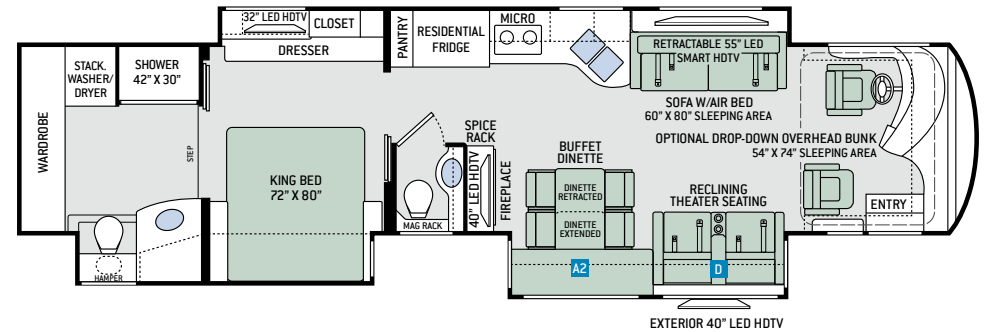


OPTIONAL SOFA ENSEMBLE
SOFA - 60" X 80" SLEEPING AREA
DREAM DINETTE - 48" X 74" SLEEPING AREA

A40



T42



Specifications

	G36	M37	A40	T42
Chassis	Freightliner XC-R	Freightliner XC-R	Freightliner XC-R	Freightliner XC-R
Gross Vehicle (GVWR)	38,320	38,320	38,320	44,700
Gross Combined (GCWR)	48,320	48,320	48,320	59,700
Wheel Base	236"	242"	272"	266"
Exterior Length	37'-11"	38'-5"	40'-11"	42'-5"
Exterior Height (w/AC)	12'-7"	12'-7"	12'-7"	12'-7"
Exterior Width (w/o mirrors)	101"	101"	101"	101"
Interior Height (living area)	84"	84"	84"	84"
Awning Size	13'-1"	16'-5"	16'-5"	(2) 12'
Fuel (gal)	150	150	150	150
LPG (lbs)	104	104	104	104
Fresh/Waste/Gray Water (gal)	91 / 51 / 51	91 / 51 / 51	91 / 51 / 51	91 / 51 / 51
Water Heater (gal)	10	10	10	10
Furnace (BTUs)	35,000	(2) 20,000	(1) 20,000 & (1) 25,000	(2) 25,000
Exterior Storage Capacity (cu. ft.)	185	185	225	215

Interior Decor



BISTRO



COASTAL



STRATA



HIGH-GLOSS GLAZED MILAN CHERRY



HIGH-GLOSS GLAZED PACIFIC CHERRY



HIGH-GLOSS GLAZED RESORT CHERRY



KITCHEN & BATH COUNTERTOPS



BEDROOM COUNTERTOP



POLISHED PORCELAIN TILE FLOORING

Exterior Graphics



CASABLANCA FULL-BODY PAINT



DYNASTY FULL-BODY PAINT



GOLD COAST FULL-BODY PAINT



SENTRY FULL-BODY PAINT

Features

CONSTRUCTION & EXTERIOR

- Freightliner® XC-R Raised Rail Chassis
- Cummins® ISL 8.9L Engine with 380HP & 1,150 lb.-ft. Torque (G36 & M37)
- Cummins® ISL 8.9L Engine with 400HP & 1,250 lb.-ft. Torque (A40 & T42)
- 6-Speed Allison MH-3000 Automatic Transmission
- Air-Ride™ Suspension
- I-Beam Front Axle with 55° Wheel Cut
- Exhaust Brake
- Sachs® Shock Absorbers
- Dual Fuel Fills
- One-Piece Fiberglass Front & Rear Caps
- Invisible Front Paint Protection
- Full-Body Paint Package
- Automatic Leveling Jacks with Touchpad Controls
- Side-Hinged Locking Compartment Doors
- Basement Pass-Through Storage
- Easy Slide Storage Tray
- Power Entry Door & Patio Awnings with Integrated LED Lighting
- Slideout Room Topper Awnings
- Patio Light (Both Sides)
- Roof Ladder
- Frameless Dual Pane Windows
- 10,000-lb. Trailer Hitch with 7-pin Round Connector (G36, M37 & A40)
- 15,000-lb. Trailer Hitch with 7-pin Round Connector (T42)

AUTOMOTIVE & COCKPIT

- 10" Touchscreen AM/FM Dash Radio with CD/DVD Player, Bluetooth® & Back-Up Monitor
- Chrome Heated/Power Mirrors with Integrated Side View Cameras
- Push Button Start

- Leatherette Reclining/Swivel Power Adjustable Captain's Chairs (Passenger Seat has Electric Footrest)
- Driver & Passenger Overhead Storage Cabinetry
- VIP Tilt/Telescoping Smart Wheel
- Cruise Control
- Emergency Engine Start Switch
- Air Horns
- Fog Lights
- Power Solar & Privacy Shades on Windshield
- Manual Solar & Privacy Shades on Side Windows
- Solid Surface Entry Steps
- Electric Step Cover
- 275/80R 22.5" Radial Tires with Aluminum Wheels (G36, M37 & A40)
- 295/80R 22.5" Radial Tires with Aluminum Wheels (T42)

INTERIOR

- Polished Porcelain Tile Throughout
- Ceiling Ducted Whisper Air™ Central Cooling System
- LED Lighting
- High-Gloss Glazed Cabinetry with Solid Wood Raised Panel Cabinet Doors & Nickel Finish Hardware
- Solid Wood Veneer in Select Areas
- Window Solar & Privacy Shades
- Leatherette Furniture
- Passenger Side Sofa with Air Bed (G36)
- Driver Side Sofa with Air Bed (M37, A40 & T42)
- Reclining Theater Seating with Footrests (M37, A40 & T42)
- Buffet Dinette with Four (4) Chairs – Includes Two (2) Folding
- Electric Fireplace with Remote Control (G36)

INTERIOR OPTIONS

- Ensemble with Sofa & Dream Dinette® (G36)
- Expanding Sofa with Air Bed (G36)
- Passenger Side Jack-Knife Sofa (M37, A40 & T42)
- Passenger Side Sofa w/Air Bed – Euro Recliner, Desktop & Electric Fireplace with Remote Control Option Required (M37 & A40)
- Euro Recliner, Desktop & Electric Fireplace with Remote Control (M37 & A40)
- Dream Dinette® Booth

KITCHEN

- 21 cu. ft. Stainless Steel Residential Refrigerator with In-Door Ice & Water Dispenser
- Electric Induction Cooktop
- 1.9 cu. ft. Stainless Steel Over-the-Range Convection Microwave Oven
- Solid Surface Countertops & Sink Covers
- Large Double Bowl Stainless Steel Sink with Single Handle Faucet & Pull-Down Sprayer
- Designer Tile Backsplash
- 12-volt Attic Fan with Cover

BEDROOM & BATHROOM

- Denver Mattress® Pillowtop King Size Bed
- Bedspread with Throw Pillows
- Ceiling Fan in Bedroom
- USB Charging Ports in Nightstands
- Porcelain Toilet
- Oversized Full Height Shower with Glass Door
- 12-volt Attic Fan with Cover in Bathroom

BEDROOM & BATHROOM OPTION

- Power Drop-Down Hide-Away Overhead Bunk with Cotton Cloud™ Mattress

ENTERTAINMENT

- 40" LED HDTV & 55" LED Smart HDTV in Living Area (A40 & T42)

- 55" LED Smart HDTV in Living Area (G36 & M37)
- 32" LED HDTV in Cockpit Overhead (G36 & M37)
- JBL® Sound Bar with Bluetooth®
- Sony® Blu-Ray Player in Living Area & Bedroom
- 32" LED HDTV in Bedroom
- Exterior 40" LED HDTV & Sound Bar w/Bluetooth®
- Cable TV & HDMI Video Ready
- Winegard™ TRAV'LER HD Satellite Dish (HD-capable with DirecTV in US. Shaw Direct in Canada)

ELECTRICAL & PLUMBING

- Cummins Onan® RV QD 8000 Diesel Generator (G36, M37 & A40)
- Cummins Onan® RV QD 10000 Diesel Generator on Power Slideout (T42)
- Automatic Generator Start
- 50-amp Shoreline Power Cord
- 2000-watt Pure Sine Inverter/100-amp Converter
- Dual 15,000 BTU Low-Profile Ducted Air Conditioners with Two (2) Heat Pumps (G36, M37 & A40)
- Triple 15,000 BTU Low-Profile Ducted Air Conditioners with Three (3) Heat Pumps (T42)
- Energy Management System
- Multiplex Wiring Control System
- Pre-Wired for Solar Charging
- Four (4) Auxiliary House Batteries
- Battery Disconnect Switch
- Exterior GFCI Recept
- 10-gallon DSI Gas/Electric Water Heater
- Enclosed & Heated Holding Tanks
- E-Z Flow Water Panel with Whole-House Water Filtration
- Black Tank Flush System
- Outside Shower
- Stackable Washer & Dryer
- Central Vacuum System w/Toe-Kick Dustpan

IMPORTANT—PLEASE READ: This brochure reflects product design, fabrication, material, components and specifications at the date of printing, which date is disclosed below. **Please visit us online at ThorMotorCoach.com or consult with your selling dealership for the latest in standards, options, specification and technical information.** Photographs in the brochure may depict optional equipment or may only be available in certain floor plans. Components, appliances and the chassis may have been manufactured in a calendar year before the vehicle's designated model year. All capacities are approximate. The actual length of the vehicle may differ from that indicated in the brochure due to variances in the manufacturing processes and/or installed components. All dry weights are based on standard model features and do not include optional features or equipment. Component part and appliance manufacturers issue limited warranties covering portions of the vehicle not covered under the limited warranty we issue. Copyright Thor Motor Coach, Inc. © OH 10/01/16

YOUR LOCAL THOR MOTOR COACH DEALER



Made to fit.

thormotorcoach.com/venetian

P.O. Box 1486, Elkhart, IN 46515 Sales Department: 800.860.5658 Customer Service: 877.855.2867

