

ASTORIA

Astoria fifth wheels and travel trailers deliver highly visible, value-driven standard features. The inclusions and design are timeless, yet forward trending to address your desire for comfort and style.

Features in Astoria

- **KeyTV** - functions as the “brain” of the system into which you plug the satellite feeds. The roof mounted antenna is already pre-wired into the system. KeyTV identifies over-the-air, cable and satellite signals and sends each signal to the TV outlets located throughout the RV.
- **All-Weather Thermal Package** - fully enclosed and force-heated underbelly that delivers cold-weather campers with two layers of insulation and enclosed gate valves. With this kind of protection for your RVs vital components, your vacation plans don't have to be confined to summer.
- **First Class Construction** - full welded aluminum framing and vacuum bonded exterior which is superior to other processes, ensuring the integrity of the Astoria.

Astoria Travel Trailer

EXTERIOR

Power Awning w/LED Lights
Tinted Safety Glass Windows
Aluminum Wheels
Outside Speakers
Pass Thru Storage
2" Receiving / Towing Hitch
All LED Marker Lights
Fiberglass Cap w/Windshield
Vacuum Bonded Lamination
Exterior Spray Port
Premium Folding Entry Step
Heated and Enclosed Underbelly
Battery Disconnect
Exterior Camping Kitchen
Slam Latch Baggage Doors

INTERIOR

One-Piece Countertops
30" Glass Fireplace
40" LED TV
Theatre Seating / Tri-Fold Sleeper Sofa
6 Gallon Gas/Electric DSI Water Heater
8.0 cu. ft. Double Door Refrigerator
Full Wall Acrylic Backsplash
Glass Top 3 Burner Range w/17" Oven
Stainless-Steel Appliances
High-Rise Kitchen Faucet w/Sprayer
Arched Interior Ceiling
70" x 80" King Bed
Kitchen Countertop Extensions (select models)
Convertible U-Shape Dinette

Standard Features In Every Astoria Travel Trailer Floor Plan



COMING SOON



ASTORIA TRAVEL TRAILER 2203RB
Length: TBD Weight: TBD Sleeps: 4-6
Hitch: TBD Height: TBD



ASTORIA TRAVEL TRAILER 2773RB
Length: 31' 1" Weight: 6,564 lbs. Sleeps: 4-6
Hitch: 972 lbs. Height: 11'5"



ASTORIA TRAVEL TRAILER 2903BH
Length: 33' 9" Weight: 6,890 lbs. Sleeps: 8-10
Hitch: 798 lbs. Height: 11'2"



ASTORIA TRAVEL TRAILER 3203BH
Length: 36' 10" Weight: 7,980 lbs. Sleeps: 8-10
Hitch: 1,020 lbs. Height: 11'5"



ASTORIA TRAVEL TRAILER 3373RL
Length: 37' 5" Weight: 8,760 lbs. Sleeps: 2-4
Hitch: 1,103 lbs. Height: 11'7"



ASTORIA TRAVEL TRAILER 3393BH
Length: 37' 5" Weight: 8,342 lbs. Sleeps: 4-6
Hitch: 1,114 lbs. Height: 11'7"

*All information & specifications are for units manufactured after 09/15/2019



Astoria Fifth Wheel

EXTERIOR

Power Awning w/LED Lights
Tinted Safety Glass Windows
Aluminum Wheels
Outside Speakers
All Weather Thermal Package
Pass Thru Storage
High Gloss Exterior (Platinum Series)
All LED Marker Lights
2" Receiving / Towing Hitch
Vacuum Bonded Lamination
Premium Folding Entry Step
Exterior Spray Port
Battery Disconnect
Dual Door Side Awning (select models)
Slam Latch Baggage Doors

INTERIOR

Solid-Surface Countertops w/LED Backlighting (Platinum Series)
Stainless Steel Farm Sink w/Apron (Island Models Only)
40" Glass Fireplace
Theatre Seating
50" LED TV
6 Gallon Gas/Electric DSI Water Heater
8.0 cu. ft. Double Door Refrigerator (1500 Series)
Full Wall Acrylic Backsplash
Glass Top 3 Burner Range w/21" Oven
Stainless-Steel Appliances
12 cu. ft. 4 Door Refrigerator (Platinum Series)
High-Rise Kitchen Faucet w/Sprayer
Panoramic Windows
Hardwood Slide Fascia w/LED Backlighting
Washer/Dryer Prep (Platinum Series)

Standard Features In Every Astoria Fifth Wheel Floor Plan



Platinum Series

1500 Series

PLATINUM SERIES

COMING SOON



ASTORIA PLATINUM FW 3503LFP
Length: TBD Weight: TBD
Sleeps: 8-10 Hitch: TBD Height: TBD



ASTORIA PLATINUM FW 3173RLP
Length: 35' 11" Weight: 10,007 lbs. Sleeps: 3-4
Hitch: 1,761 lbs. Height: 12'2"



ASTORIA PLATINUM FW 3553MBP
Length: 39' 11" Weight: 11,312 lbs.
Sleeps: 8-10 Hitch: 1,895 lbs. Height: 12'6"

1500 SERIES



ASTORIA 1500 FW 2503REF
Length: 30' 0" Weight: 7,880 lbs. Sleeps: 2-3
Hitch: 1,476 lbs. Height: 12'5"



ASTORIA 1500 FW 2943BHF
Length: 33' 10" Weight: 8,670 lbs.
Sleeps: 6-8 Hitch: 1,566 lbs. Height: 12'6"



ASTORIA 1500 FW 2993RLP
Length: 33' 11" Weight: 9,281 lbs.
Sleeps: 3-4 Hitch: 1,608 lbs. Height: 12'10"



ASTORIA 1500 FW 3343BHF
Length: TBD Weight: TBD
Sleeps: TBD Hitch: TBD Height: TBD

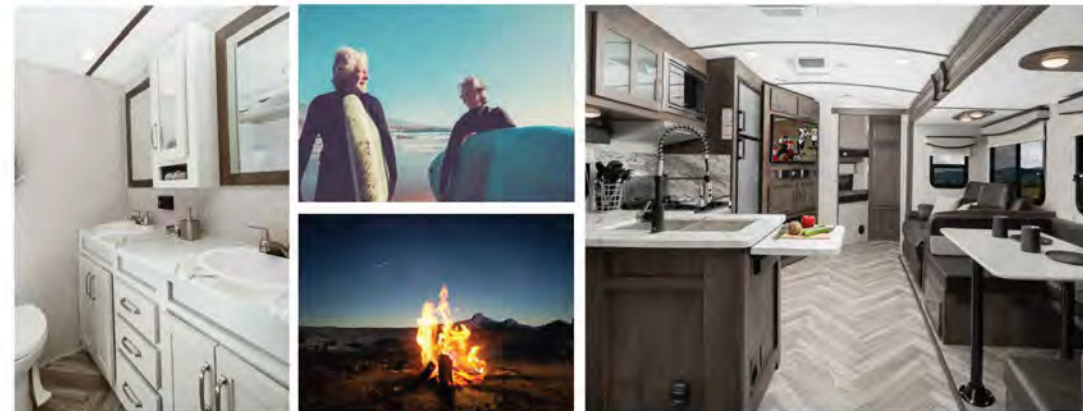
COMING SOON

ASTORIA

Sense of belonging

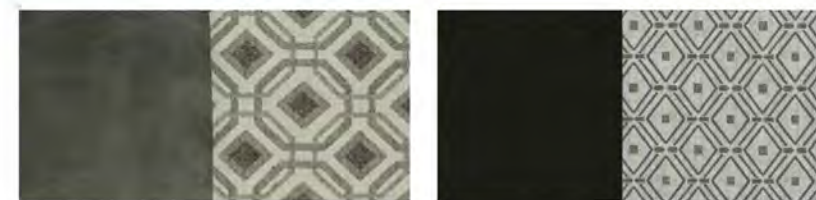
Whether you're listening to the ocean waves crash against the beach, a coyote howling off in the mountain distance, or the sounds of the big city, comfort is found here.

Astoria 3173RLP Fifth Wheel



Astoria 2903BH Travel Trailer

Interior Decor



Gunmetal

Walnut

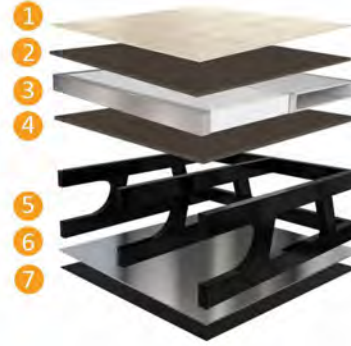
To learn more visit our website dutchmen.com



DUTCHMEN® CONSTRUCTION ADVANTAGE

Vacuum Bonded Floor Structure

- 1 Linoleum Flooring
- 2 Composite Floor Decking
- 3 Aluminum Frame with Block Foam Insulation and Heat Duct
- 4 Composite Floor Decking
- 5 Steel powder coated main I-Beam Frame
- 6 Foil Barrier (FW Only)
- 7 Fully Enclosed Underbelly

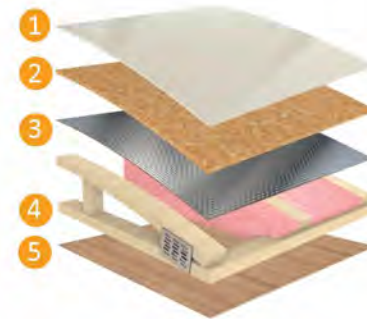


Vacuum Bonded Laminated Walls

- 1 Fiberglass Exterior Panel
- 2 Lauan Wall Backing
- 3 Aluminum Frame with Block Foam Insulation
- 4 Lauan Interior Wall Panel

Roof Structure

- 1 TPO Roof
- 2 3/8" Decking
- 3 Foil Barrier (FW only)
- 4 Fiberglass Insulation
- 5 Lauan Interior Panel



PO BOX 2000 | 2164 CARAGANA COURT | GOSHEN, IN 46527 | SALES 574.537.0600

www.dutchmen.com

Visit us online to see all the Dutchmen brands, innovative models and spacious floor plans.



MORE STANDARD FEATURES MORE VALUE

Dutchmen RVs turn more heads on the lot and in the campground than any other. Why? While other manufacturers offer features as options, Dutchmen tends to make those same features standard. Call it "bang for the buck," "more for your money," or simply "more value." We've built a reputation for bringing RV owners more standard features for less money for more than 25 years . . . and it's a reputation we plan to keep.



100%
PRE-DELIVERY
INSPECTION

At Dutchmen, quality is standard. Every single Dutchmen RV that comes off the line receives its own pre-delivery inspection. Every unit undergoes a thorough 253-point check to ensure accurate measurements, fully-functional electronics and components.



THE INDUSTRY'S
BEST
RV WARRANTY

With this industry-best warranty, we take the guessing game out of what is and isn't covered. So, that means you don't have to wrangle over the details, because we deliver value by clearly outlining the major components we back during the first three years.



THE LEADER IN
PARTS AND SERVICE

Replacement parts. Routine checkups. Expert advice. You name it and we've got it covered. When only the best RV services will suffice, our industry-leading parts and service department is ready to help you get back on the road - and stay there longer than ever before.

*Length is defined as the distance from the centerline of hitch pin/coupler to rear bumper of trailer. **Our weights represent how most units are built, inclusive of many commonly-ordered options. ***Fresh water capacity includes water heater capacity.

DISCLAIMER: Product information is as accurate as possible as of the date of brochure publication. All features, floor plans and specifications in this brochure are subject to change without notice. Please consult Dutchmen's website at www.Dutchmen.com for current product information and specifications. Tow Vehicle Disclaimer. CAUTION: Owners of Dutchmen recreational vehicles are solely responsible for the selection and proper use of tow vehicles. All customers should consult with a motor vehicle manufacturer or their dealer concerning the purchase and use of suitable tow vehicles for Dutchmen products. Dutchmen disclaims any liability or damages suffered as a result of the selection, operation, use or misuse of a tow vehicle. DUTCHMEN'S LIMITED WARRANTY DOES NOT COVER DAMAGE TO THE RECREATIONAL VEHICLE OR THE TOW VEHICLE AS A RESULT OF THE SELECTION, OPERATION, USE OR MISUSE OF THE TOW VEHICLE. REFERENCE DUTCHMEN MANUFACTURING OWNERS MANUAL FOR LIMITED WARRANTY DETAILS. © 2020 Dutchmen 11-05-2019-ASTORIA-Printed in U.S.A.



ASTORIA

Fifth Wheels & Travel Trailers

