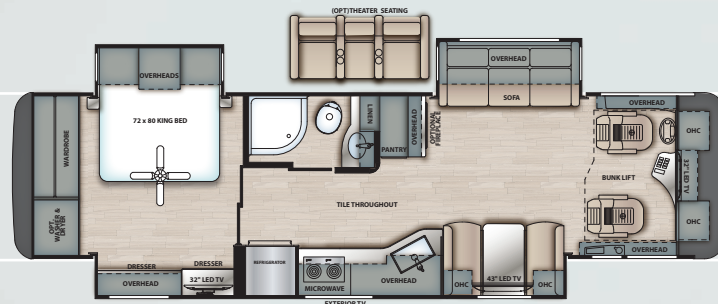


by Forest River



Your Luxury.  
Your Destination.



34B







↑  
NOTE: FRONT CAP IS ONLY A REPRESENTATION,  
ACTUAL FRONT CAP MAY DIFFER.

---

# TRU-BRACE FOUNDATION

---



Introducing the V-Ride™ Rear RV Suspension System from FCCC. As the first ever single axle suspension rated at 21,000 pounds and higher, it's designed for today's demanding luxury motorhome owners- who want the ability to carry more gear, the freedom to equip their interiors with premium amenities, and a comfortable, confident driving experience.

**6" Roof at the Crown, Welded Aluminum Tube - Laminated Vacuum Bonded with Integrated A/C Ducting**

- A** Framing is welded 2" aluminum tube
- B** 1/4" Luan top layer with 1 piece fiberglass
- C** 5-1/4" radius polystyrene insulation
- D** Galvanized metal backers for A/C's, satellite, solar panel and antennae

**1-7/8 Thick Sidewall, Welded Aluminum Tube - Laminated Vacuum Bonded.**

- E** 1/4" Luan backed fiberglass sidewall
- F** Heavy wall aluminum tube around perimeter and around slide openings
- G** 1-1/2" polystyrene insulation
- H** 1/8" interior décor finishing board

**3-1/8" Floor, Vacuum Bonded Laminated**

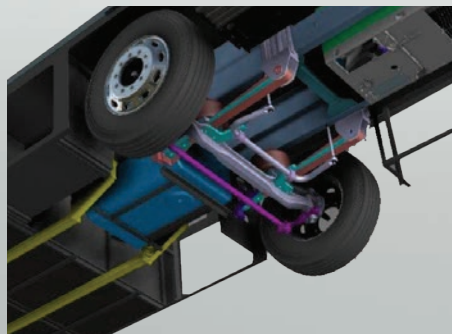
- I** Framing is welded 2-1/2" aluminum tube
- J** 2-1/2" polystyrene insulation
- K** 1-piece 1/2" structure board
- L** Core-8 waterproof composite underbelly

**Fiberglass Molded Front and Rear Caps**

- Q** 1-piece automotive grade bonded windshield
- R** Generator slide system

**Full Paint Welded Steel Chassis Structure**

- M** Tru-Brace, chassis stiffener system
- N** 1-piece aluminized steel side skirt
- O** 1-piece bent steel storage compartments
- P** 1-1/2" insulated steel tube firewall



**TRU-BRACE  
ANTI-CAMBER  
SUPPORT  
BRACING**

for more information please visit  
[www.forestriverinc.com/Berkshire](http://www.forestriverinc.com/Berkshire)

# BERKSHIRE DECOR OPTIONS

## CUSTOMIZE YOUR INTERIOR

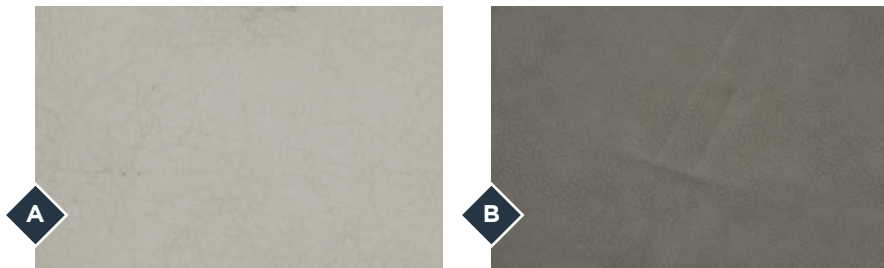
### WOOD GRAIN OPTIONS (CHOOSE ONE)

- A** Robust Cherry
- B** Bronze Maple



### LEATHERETTE OPTIONS

- A** Quartz
- B** Sea Haze



### DESIGNER FABRIC OPTIONS

- A** Moonstone
- B** Sterling Optim

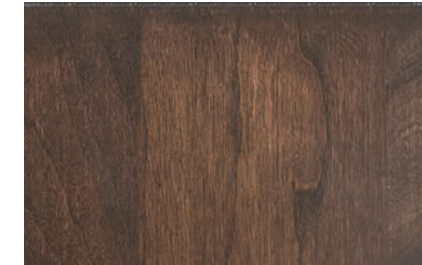


### SURFACE OPTIONS

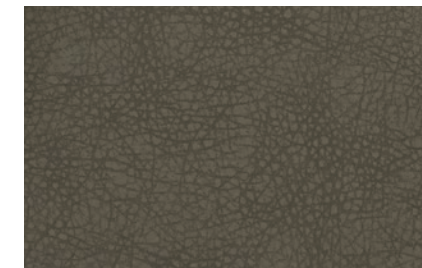
- A** Standard Polished Porcelain Flooring
- B** Matte Flooring Option
- C** Standard Countertop



## FIXED INTERIOR | Milan

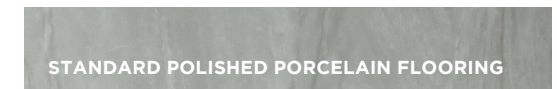


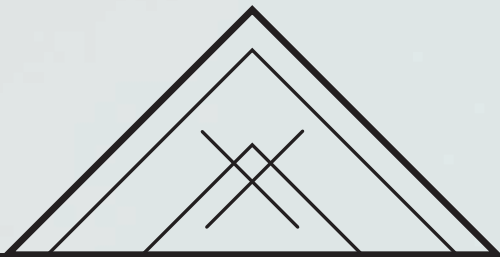
Executive  
Dark Cherry  
Wood Grain



Milan  
Leatherette

### DESIGNER FABRICS

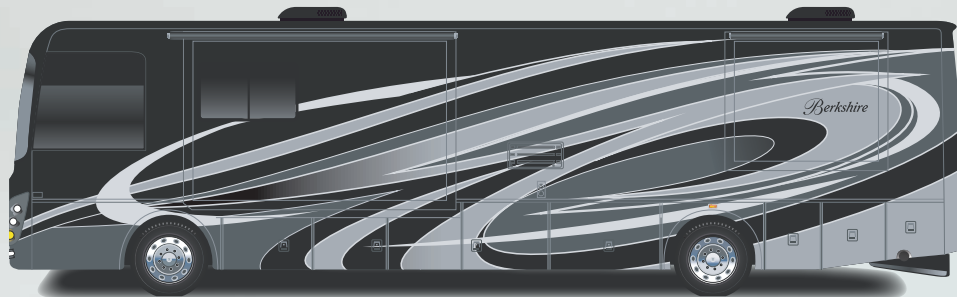




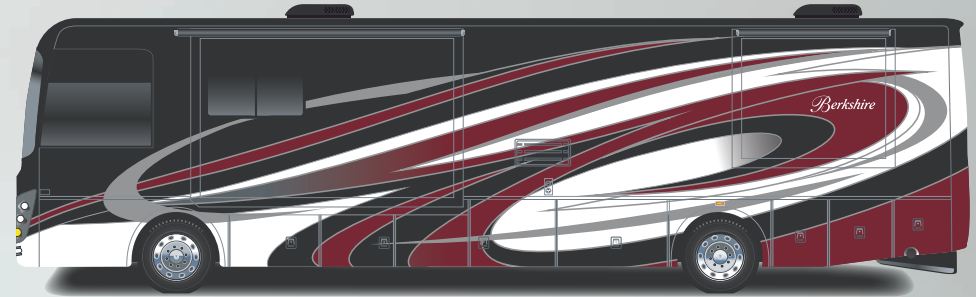
# PAINT PACKAGES



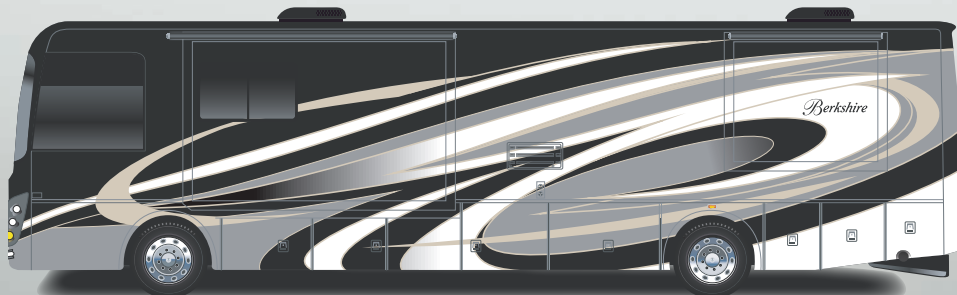
**BERKSHIRE SHOWN IN  
FRENCH COUNTRY**



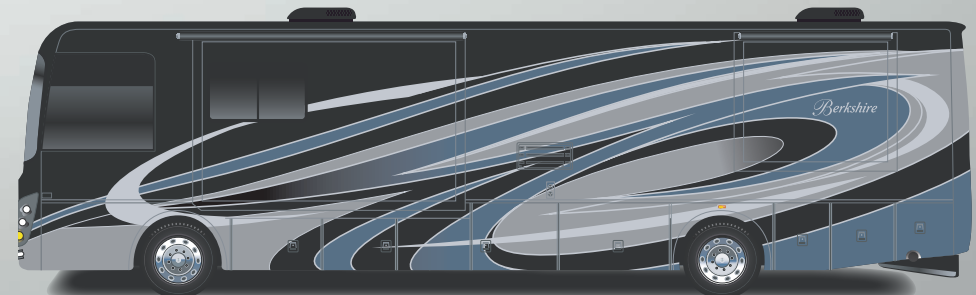
MIDNIGHT SHADOW



FRENCH COUNTRY



COURTYARD



WIND RIDGE



## STANDARDS AND OPTIONS

## STANDARDS

---

### Chassis

---

- + Freightliner XCR Raised Rail Chassis
- + Cummins ISB turbo diesel 6.7 liter 360 HP, 2600 RPM, 800 LB/FT @1800 RPM
- + Allison 3000MH 6-speed transmission
- + 120v Engine Heater 750W
- + 22.5" Polished Aluminum Wheels
- + Michelin X line energy Z 275/80R22.5 tires
- + Trailer Hitch, 10,000 # Capacity
- + 100 gallon, locking dual fill fuel tank
- + Driver side mounted 13 Gallon DEF Tank
- + Day time running lights
- + 7-Pin tow power connector
- + 18.7 CFM air compressor
- + Farr Eco-air cleaner
- + Air filter restriction indicator
- + Fuel/water separator
- + Brake line Air Dryer w/Heater
- + Automatic, heated moisture ejectors
- + Heavy duty-windshield wipers w/intermittent function
- + 160 amp alternator
- + Full air ABS brakes w/ auto slack adjuster
- + Two (2) 1900 CCA at 0 degree Fahrenheit, maint. free batteries
- + Variable exhaust brake
- + Suspension Neway front and V- Ride rear
- + Sachs custom tuned shock absorbers

- + 55 degree wheel cut
- + Auto air suspension deflation system
- + Rear mounted radiator
- + Transmission oil cooler
- + 5 year / 100,000 mile coolant (some maintenance required)
- + Electronic cruise control w/ high idle

---

### Construction and Exterior

---

- + Fiberglass front and rear caps
- + Full body painted exterior
- + Four (4) point fully auto hydraulic leveling system w/ auto air dump
- + Steel basement structure
- + Tru-Brace Anti Camber chassis support system
- + Rust resistant aluminized steel chassis skirts
- + Diamond shield front mask protective film
- + 1 Piece Fiberglass Roof
- + Top-mount remote mirrors w/ heat, & sideview cameras
- + Frameless dual pane, dark tint windows
- + Automotive foam and Ziebart seal undercoating
- + Carefree power door awning
- + Carefree Latitude dual pitch patio awning w/ LED light & Wind Sensor
- + Carefree s/o topper w/covers
- + Full height strut assisted doors and full pass through storage
- + "One Key" system, ext-compartment, entry door & fuel fill doors
- + Quiet integrated A/C intake/ducting roof system

- + Crowned and layered vacuum bonded fiberglass roof
- + Vacuum bonded 3" floor w/ tubular aluminum frame
- + Gel coat vacuum bonded sidewalls, s/o floors & walls
- + Block foam polystyrene insulation in walls, roof and floors
- + 30" Entryway
- + Channeled drains for A/Cs
- + Tube steel firewall w/ polystyrene insulation
- + Lighted exterior assist handle
- + 84" interior ceiling height
- + PTL steel entrance door with deadbolt (Keyless Prep)
- + Auxiliary air chuck (front driver side compartment)
- + Auxiliary LP supply, quick connect (passenger side)
- + LED Marker Lights
- + Full length mud flap w/ chrome Berkshire name
- + Slide tray in basement compartment

---

### Electrical

---

- + 50A service w/auto transfer switch & 30' power cord
- + EZ power cord entry
- + 8kW Onan diesel generator w/ manual slide tray (10kW 40F)
- + Energy management system
- + Electronic house power disconnect switch
- + Generator start/stop switch (On dash/bedroom)
- + Multi-plex w/Precision plex app control
- + Dimmer control lighting throughout



- + LED lighting package
- + Decorative bath, dinette & wall lights
- + Individual bed led reading lights in overhead
- + 2000kW pure sine wave inverter/charger
- + Auto generator start control
- + (4) Six volt deep cycle house batteries
- + House Battery Distribution Center (HBC)
- + Chassis & house battery bank master shut off switches
- + LED porch & patio lights
- + Easy read 12v house/Chassis load centers
- + Solar prep w/mppt controller and roof prep
- + Automotive chassis fuse panel (front driver side compartment)
- + Ceiling fan in bedroom

---

## Plumbing

---

- + Variable speed 4 GPM water pump
- + Individual zoned hot/cold manifold water supply system
- + 4-way water management valve in water bay compartment
- + Bath - Solid surface under mount sink
- + Kitchen - Stainless steel under mount sink
- + One piece fiberglass shower w/tempered glass door & skylight
- + Whole house water filter
- + Black water tank flush system
- + Kitchen single lever faucet w/ pull-out sprayer
- + Porcelain china bowl toilet w/foot flush

- + Tecma macerator toilet in rear bath (N/A 34B)
- + Clean-easy exterior shower hose
- + Convenience monitor panel in water bay door
- + 360 Roof vent caps

---

## Driver/Passenger Cockpit

---

- + One piece windshield
- + Power front day/night shades
- + Passenger & driver window night shades
- + 3D Carbon fiber dash panels
- + Optiview glass instrument panel
- + Steering wheel - w/radio audio, wipers, engine brake, cruise & transmission mode control
- + Auxiliary Fog lights
- + 10" Dash radio w/ color back-up and side view camera pkg w/Nav.
- + Sirius/XM satellite roof mounted antenna
- + Leatherette driver seat, swivel & recline w/6-way power adjustments
- + Leatherette passenger seat, swivel, recline & manual footrest
- + Driver/Passenger side consoles w/cupholders
- + Passenger seat workstation
- + Driver console wireless cellphone charger
- + Lighted step well
- + Two (2) Defroster fans w/ high and low settings
- + Automotive dash AC/heater w/deluxe controls
- + Multiple auxiliary/USB & 12V charging ports at dash
- + Power flush floor stepwell cover
- + Multiple entry assist handles

- + Driver & Passenger LED ceiling map lights
- + Emergency/aux engine start switch at dash
- + Fitted Cockpit floormat w/"Berkshire" logo
- + Fitted entryway step carpet mats

---

## Interior

---

- + Polished porcelain tile throughout
- + Semi gloss hardwood cabinetry w/glazing, interior doors & slideout fascia (Glazing N/A with executive dark cherry option)
- + Hardwood raised panel cabinet doors w/glazing
- + Front bed lift in cockpit
- + Hidden hinges and bar pull style cabinet hardware
- + Living room ceiling crown trim
- + Carpeted slide-outs w/applicable
- + Decorative Window valances
- + "Soft Touch" Dream booth dinette w/ storage underneath
- + Jack Knife sofa (N/A 34B, 39A)
- + Visionary Hide A Bed sofa (N/A 40F)
- + Love seat sofa (N/A 34B, 40F)
- + Polished solid surface kitchen c-tops & backsplash w/tile inserts
- + Full extension ball bearing metal drawer guides
- + Galley storage compartment for range and sink covers
- + Kitchen Pantry
- + Pull out kitchen drawer base (N/A 34B, 40F)
- + "Soft Touch" padded ceiling
- + Roller style day/night shades

- + Dresser drawers and wardrobe bedroom cabinetry
- + 72"x 80" Serta king bed w/bedspread and decorative pillows
- + Overhead cabinets in slide rooms
- + Bed night stands, w/dual USB jack & overhead cabinetry
- + Mirrored vanity overhead cabinet doors
- + Towel bar, toilet paper holder & towel ring
- + LP gas, carbon monoxide & smoke detectors
- + Fire extinguisher

---

## Appliances

---

- + 15,000 BTU w/heat pump (front) & 15,000 BTU (rear) low profile A/C's
- + Holding tank heat pads
- + Truma continuous flow hot water
- + 35,000 (34B) 42,000 (39A), 2-20,000 (40F) BTU furnace
- + 30" OTR convection microwave oven
- + 2 Door residential refrigerator
- + Electric induction glass cook top
- + Power fan in bathroom w/rain cover
- + Maxxair in galley w/wireless remote control w/rain cover
- + Washer/dryer prep
- + Electric fireplace
- + Central vacuum system

---

## Entertainment

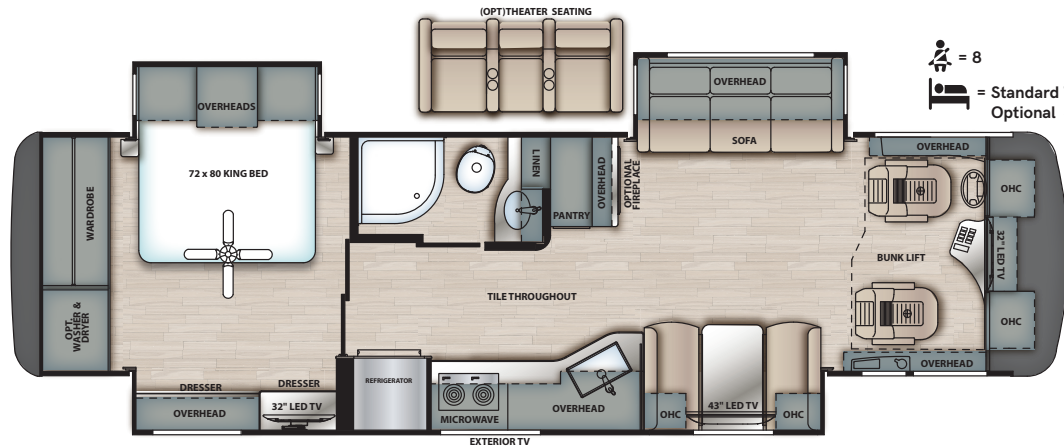
---

- + 49" LED TV, living room (N/A 34B, 40F)
- + 43" LED TV, living room (N/A 39A)

- + 32" LED TV, bedroom
- + 32" LED TV, exterior TV w/bluetooth radio & speakers
- + 32" LED TV in cockpit overhead (N/A 39A)
- + JBL Soundbar w/integrated sub & bluetooth
- + Roof mount Winegard Trav'ler satellite prep
- + Park/cable prep
- + WiFi antenna & router
- + High Definition Cat6 matrix signal distribution
- + Hi-Definition digital TV antenna
- + Blu-ray DVD Player

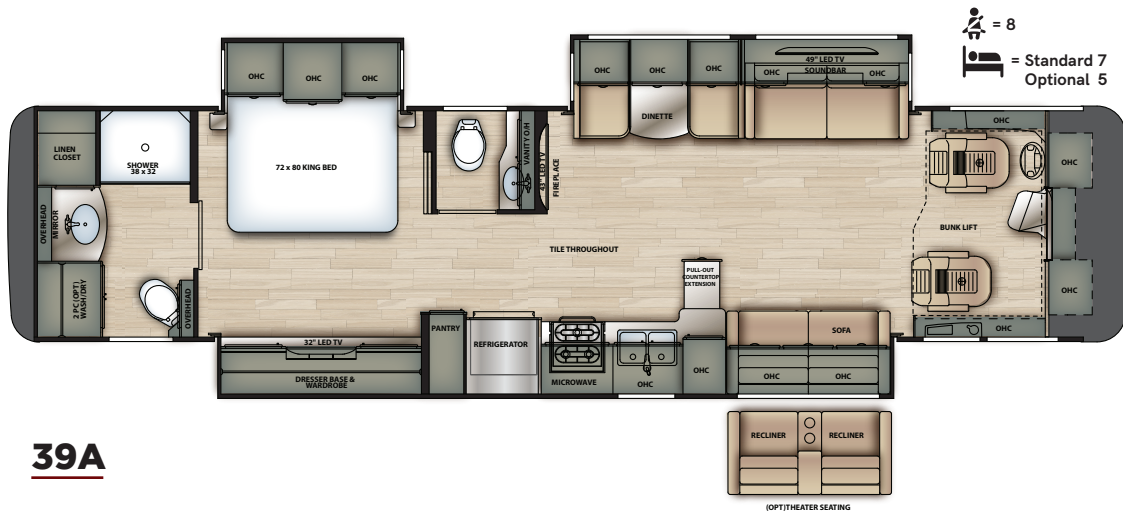
## OPTIONS

- + Theater seating IPO sofa
- + Ceramic matte finish tile
- + Trav'ler (Winegard) satellite antenna- Dish Network TV (US)
- + Trav'ler (Winegard) satellite antenna- Shaw (Canada)
- + Stackable washer & dryer
- + Convenience PKG: Dash radio tuned amplifier system, Keyless entry, auto WiFi extended range antenna, 100W solar panel
- + Delete front bunk lift



### 34B

- + Compact, Spacious, 35' Class A Diesel with King Bed, Large Kitchen and Storage
- + Large, Full Wall, Hydraulic Passenger Side Slide and 18' Awning on Camp Side
- + Abundant Sleeping for Up To 7 with Drop Down Cockpit Bed
- + 10,000 Lbs. Towing, Aluminized Chassis Skirts, Central Water Manifold



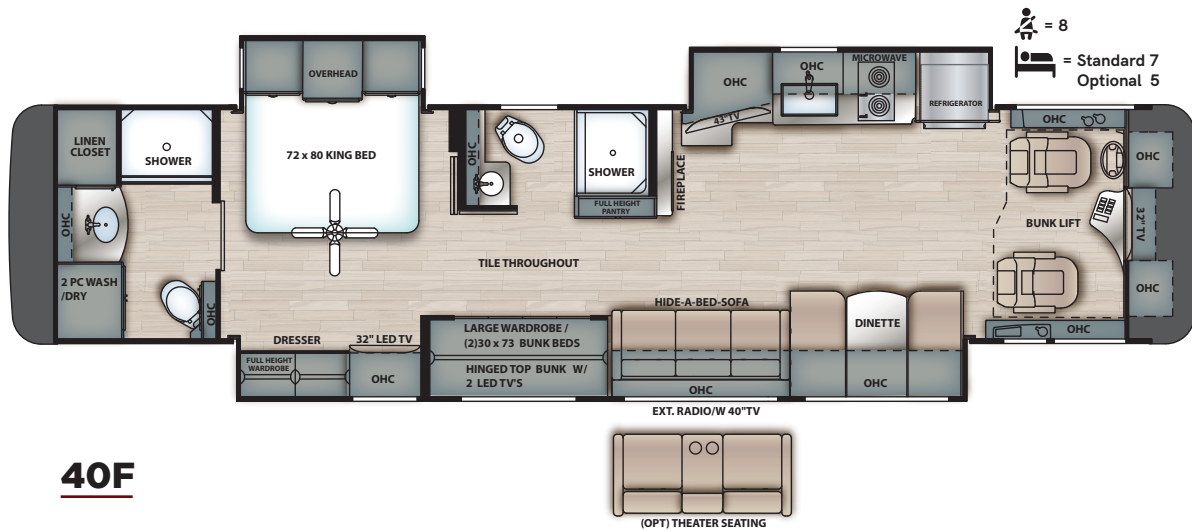
### 39A

- + Spacious Bath and a Half Floorplan with Open Living Area and Storage
- + Large, Full Wall, Hydraulic Passenger Side Slide and 18' Awning on Camp Side
- + Abundant Sleeping for Up To 7 with Drop Down Cockpit Bed
- + Passenger Workstation in Cockpit Area



	34B	39A
Length	35'5"	39'8"
GVWR (Lbs.)	32,400	33,400
GCWR (Lbs.)	42,400	43,400
GAWR Front (Lbs.)	12,400	12,400
GAWR Rear (Lbs.)	20,000	21,000
Wheelbase	206"	252"
Height*	12' 8"	12' 8"
Width*	100"	100"
Basement Storage*	130 ft <sup>3</sup>	183 ft <sup>3</sup>
Awning	18' 0"	18' 0"
Fresh Tank*	103	103
Gray Tank	66 gal.	66 gal.
Black Tank	42 gal.	42 gal.
LP Tank	24.5 gal.	24.5 gal.
Hydronic Heat (BTU's)	35,000	42,000
Tankless Continuous Hot Water	S	S

\*Fresh water tank includes quick drain valve  
Please see back cover for more information regarding weights.



## 40F

- ✦ 2 Full Baths and Convertible Bunkhouse Wardrobe
- ✦ Aquaview Showermiser System for Reduced Water Consumption in Shower
- ✦ Full Wall Hydraulic Passenger Side Slide Out, Open Floorplan and Large Campside Awning
- ✦ Individual Water Manifold System Providing Ideal Water Pressure for 2 Full Baths



## 40F

Length	40'10"
GVWR (Lbs.)	33,400
GCWR (Lbs.)	43,400
GAWR Front (Lbs.)	12,400
GAWR Rear (Lbs.)	21,000
Wheelbase	266"
Height*	12' 8"
Width*	100"
Basement Storage*	220 ft <sup>3</sup>
Awning	18'0"
Fresh Tank*	103
Gray Tank	66 gal.
Black Tank	42 gal.
LP Tank	24.5 gal.
Hydronic Heat (BTU's)	2-20,000
Tankless Continuous Hot Water	S

\*Fresh water tank includes quick drain valve  
Please see back cover for more information regarding weights.



GVWR (Gross Vehicle Weight Rating) - is the maximum permissible weight of the unit when fully loaded. It includes all weights, inclusive of all fluids, occupants, cargo, optional equipment and accessories. For safety and product performance do NOT exceed the GVWR.

GCWR (Gross Combined Weight Rating) - Is the maximum permissible loaded weight of your motor home and any towed trailer or towed vehicle. Actual GCWR of this vehicle may be limited by the sum of the GVWR and the installed hitch receiver maximum capacity rating; see hitch rating label for detail.

GAWR (Gross Axle Weight Rating) - is the maximum permissible weight, including cargo, fluids, optional equipment and accessories that can be safely supported by each axle.

UVW (Unloaded Vehicle Weight)\* - is the typical weight of the unit as manufactured at the factory. It includes all weight at the unit's axle(s), including full fuel, all fluids and LP Gas. The UVW does not include cargo, fresh potable water, additional optional equipment or dealer installed accessories.

\*Estimated Average based on standard build optional equipment.

CCC (Cargo Carrying Capacity)\*\* - is the amount of weight available for fresh potable water, cargo, passengers, additional optional equipment and accessories. CCC is equal to GVWR minus UVW. Available CCC should accommodate fresh potable water (8.3 lbs per gallon). Before filling the fresh water tank, empty the black and gray tanks to provide for more cargo capacity.

\*\* Estimated average based on standard build optional equipment.

Each Forest River RV is weighed at the manufacturing facility prior to shipping. A label identifying the unloaded vehicle weight of the actual unit and the cargo carrying capacity is applied to every Forest River RV prior to leaving our facilities.

The load capacity of your unit is designated by weight, not by volume, so you cannot necessarily use all available space when loading your unit.

Actual towing capacity is dependent upon your particular loading and towing circumstances, which includes the GVWR, GAWR and GCWR as well as adequate trailer brakes. Please refer to the Operator's Manual of your vehicle for further towing information.

All information contained in this brochure is believed to be accurate at the time of publication. However, during the model year, it may be necessary to make revisions and Forest River, Inc., reserves the right to make all such changes without notice, including prices, colors, materials, equipment and specifications as well as the addition of new models and the discontinuance of models shown in this brochure. Therefore, please consult with your Forest River dealer and confirm the existence of any materials, design or specifications that are material to your purchase decision.




**PRE-DELIVERY INSPECTION FACILITY**

20,000 square feet of quality assurance. The bare essentials for a premium product. This state-of-the-art facility gives immediate daily feedback to production for quality assurance in every unit built.

**24/7 EMERGENCY  
ROADSIDE ASSISTANCE  
WITH VEHICLE PURCHASE\***

<p>TOWING JUMP-STARTS TIRE CHANGES FLUID DELIVERY LOCKOUT SERVICE</p>	<p>WINCH-OUT MOBILE MECHANIC TECHNICAL SUPPORT DEALER LOCATOR SERVICES</p>
---	--



\*VALID FOR 1 YEAR FROM DATE OF PURCHASE

**CUSTOMER SATISFACTION**



[www.ForestRiverBuyLocal.com](http://www.ForestRiverBuyLocal.com)



**Learn More**  
Scan this barcode using a QR Reader on your smart phone to learn more about Forest River.



A Berkshire Hathaway company.

Forest River Diesel Division  
1800 W. Hively Ave.  
Elkhart, IN 46517  
(574) 522-3693  
[www.forestriverinc.com](http://www.forestriverinc.com)  
[www.forestriveraccessories.com](http://www.forestriveraccessories.com)

**FREE MEMBERSHIP**  
to Forest River Owners' Group

[www.forestriverfrog.com](http://www.forestriverfrog.com)

