

NORTHERN SPIRIT

CAMPING SIMPLIFIED.



A FOREST RIVER® BRAND

**NORTHERN
SPIRIT**

NORTHERN SPIRIT HAS THE RIGHT FEATURES IN THE RIGHT PLACES TO MAKE YOUR CAMPING EXPERIENCE MORE ENJOYABLE. WELL DESIGNED STORAGE SPACES PROVIDE EASY ACCESS TO EVERYTHING.

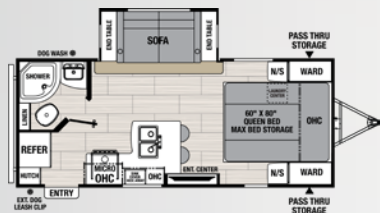


2565FK

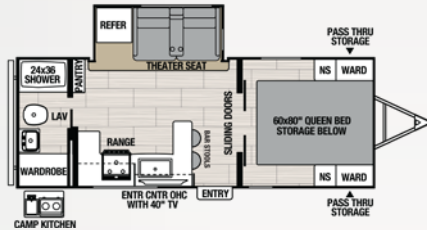


ULTRA LITE FLOORPLANS

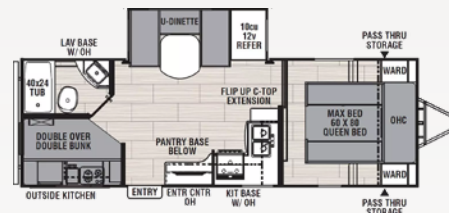
FLOORPLANS



1943RB



2353RB



2455BH



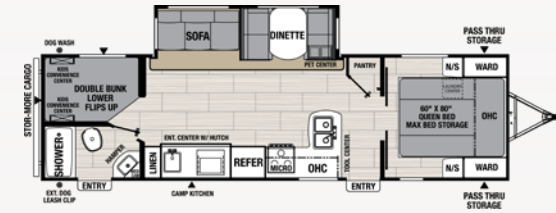
2557RB



2565FK



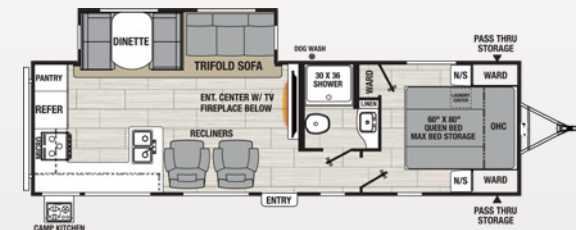
2764RE



2963BH

SPECIFICATIONS

ULTRA LIGHT	1943RB	2353RB	2455BH	2557RB	2565FK	2764RE	2963BH	2965RK
Hitch Weight	520	640	790	648	868	840	982	770
Carrying Capacity	1,574	1,508	1,872	1,758	1,430	1,956	2,144	1,022
UVW	4,926	5,492	5,728	5,842	6,400	7,044	6,856	6,578
GVWR	6,500	7,000	7,600	7,600	7,868	9,000	9,000	7,600
Ext. Length	24' 0"	25' 11"	28' 11"	29' 3"	29' 8"	32' 10"	34' 0"	33' 5"
Ext. Height	11' 1"	11' 3"	11' 1"	11' 1"	11' 1"	11' 4"	11' 2"	11' 3"
Ext. Width	96"	96"	96"	96"	96"	96"	96"	96"
Awning Length	15'	TBD	20'	18'	18'	12'	18'	20'
Fresh Water Capacity (gal.)	50	50	50	50	50	50	50	50
Gray Water Capacity (gal.)	35	35	70	70	70	35	35	70
Waste Water Capacity (gal.)	35	35	35	35	35	35	35	35



2965RK

NORTHERN SPIRIT'S NEWEST SEGMENT DELIVERS ALL OF THE ESSENTIAL FEATURES, FLOORPLANS, AND CONTRUCTION WITHOUT BREAKING THE BANK.

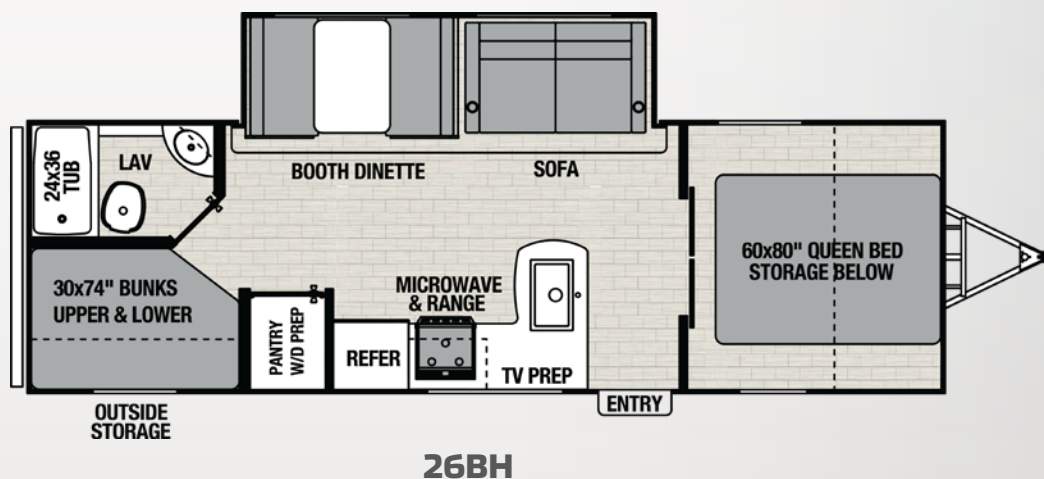
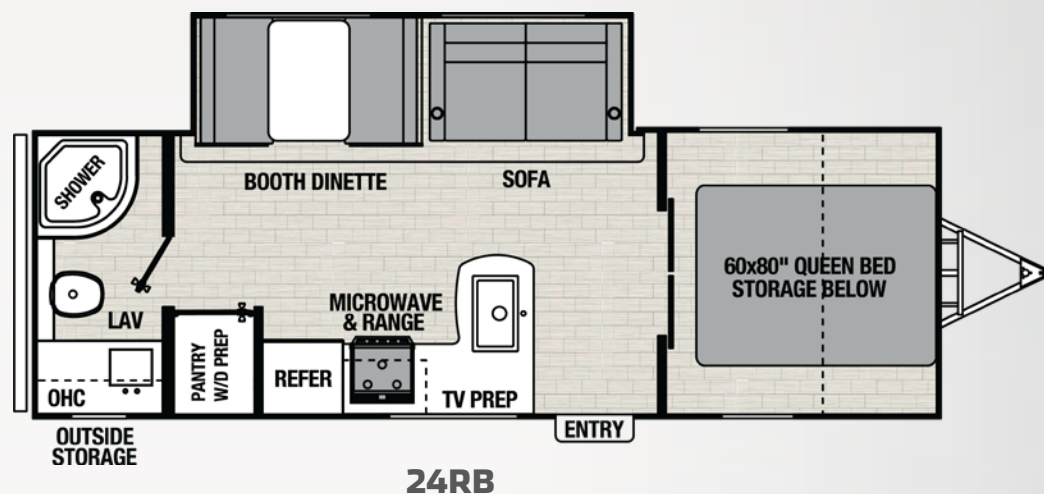
SE FLOORPLANS

FLOORPLANS



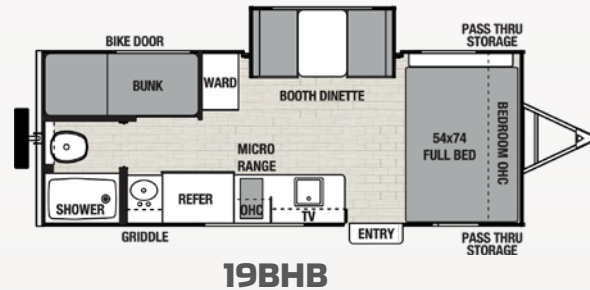
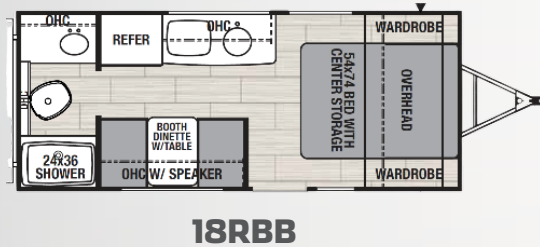
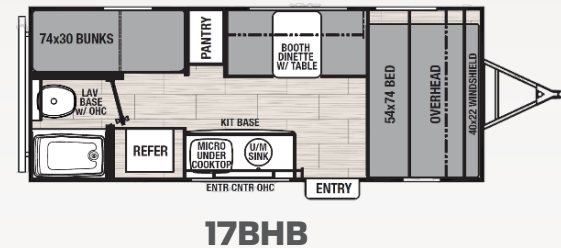
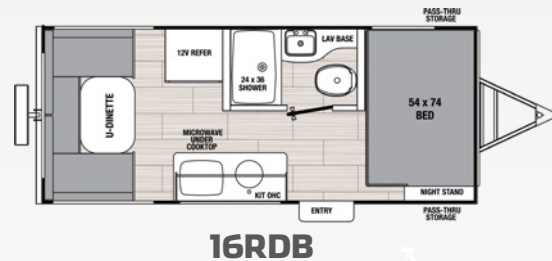
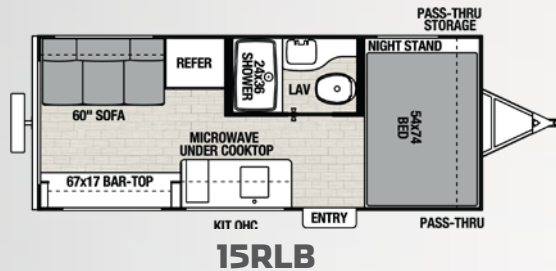
SPECIFICATIONS

ULTRA LIGHT	24RB	26BH
Hitch Weight	584	694
Carrying Capacity	2,279	2,053
UVW	5,286	5,622
GVWR	7,584	7,694
Ext. Length	29' 1"	30' 11"
Ext. Height	10' 10"	10' 11"
Ext. Width	96"	96"
Awning Length	15'	20'
Fresh Water Capacity (gal.)	50	50
Gray Water Capacity (gal.)	35	35
Waste Water Capacity (gal.)	35	35



BIJOU FLOORPLANS

FLOORPLANS



SPECIFICATIONS

ULTRA LIGHT	15RLB	16RDB	17BHB	18RBB	19BHB
Hitch Weight	TBD	396	332	308	393
Carrying Capacity	TBD	1,392	1,134	1,397	1176
UVW	TBD	3,008	3,266	3,003	3598
GVWR	TBD	4,400	4,400	4,400	4793
Ext. Length	TBD	20' 11"	21' 9"	20' 10"	22' 11"
Ext. Height	TBD	9' 10"	9' 10"	9' 10"	9' 11"
Ext. Width	TBD	84"	84"	84"	84"
Awning Length	TBD	14'	14'	12'	18'
Fresh Water Capacity (gal.)	TBD	50	50	50	50
Gray Water Capacity (gal.)	TBD	35	35	35	35
Waste Water Capacity (gal.)	TBD	35	35	35	35





18RBB



CAMPING SIMPLIFIED PACKAGE (ULTRA LITE FLOORPLANS ONLY) VAULTED CEILINGS, "TWICE COOL" DUAL DUCTED AIR CONDITIONING SYSTEM, MOTION ACTIVATED FLOOR LIGHTS, EXTERIOR DOG LEASH CLIP, BOTTLE OPENER, EXTERIOR FISHING POLE STORAGE, MAX BED STORAGE, KIDS CONVENIENCE CENTER (BUNK MODELS), MOTION ACTIVATED EXTERIOR STORAGE LIGHT, 3/4" QUICK CONNECT STABILIZER JACK BIT, DINETTE STORAGE BIN

CUSTOMER CONVENIENCE PACKAGE (ULTRA LITE FLOORPLANS ONLY) FIBERGLASS FRONT CAP W/ LED STRIP LIGHTS, ALUMINUM WHEELS, SPARE TIRE KIT, POWER AWNING W/ LED STRIP LIGHT, FRONT ROCK GUARD, TV & RADIO ANTENNA W/ BOOSTER, SOLID STEPS, 200W SOLAR PANEL W/ 30A CONTROL CHARGER, BLUETOOTH SPEAKER, LED TV, SATELLITE PREP, NIGHT SHADES, MICROWAVE, 3 BURNER COOKTOP W/ OVEN, 12V DOUBLE DOOR REFRIGERATOR, EXTERIOR GRIDDLE, TANKLESS WATER HEATER, SKYLIGHT IN BATH, RVIA

BIJOU CAMPING SIMPLIFIED PACKAGE FISHING POLE STORAGE, 3/4" QUICK CONNECT STABILIZER JACK BIT, EXTERIOR GRIDDLE, EXTERIOR DOG LEASH CLIP, BOTTLE OPENER, MOTION ACTIVATED EXTERIOR STORAGE LIGHT, TV PREP

BIJOU CUSTOMER CONVENIENCE PACKAGE FRONT CAP WINDOW, ALUMINUM WHEELS, SOLID STEPS, BACKUP CAMERA PREP, SPARE TIRE KIT, POWER AWNING W/ LED STRIP LIGHTS, FRONT ROCK GUARD, SOLAR PREP, AIR CONDITIONER, BLUETOOTH SPEAKER, NIGHT SHADES, TANKLESS WATER HEATER, TAINLESS STEEL SINK, MICROWAVE, 2 BURNER COOKTOP, DOUBLE DOOR REFRIGERATOR

NORTHERN SPIRIT ESSENTIALS PACKAGE (SE FLOORPLANS ONLY) DOUBLE AZDEL SIDEWALLS, PVC ROOF, SOLAR PREP, BACKUP CAMERA PREP, FRONT ROCK GUARD, SPARE TIRE KIT, POWER AWNING W/ LED STRIP LIGHTS, SLIDE TOPPER PREP, AIR CONDITIONER, NIGHT SHADES, STAINLESS STEEL SINK, TANKLESS WATER HEATER, DOUBLE DOOR REFRIGERATOR, 2 BURNER COOKTOP, MICROWAVE



To learn more about Coachmen RV and our products and see how Coachmen is making the easy life easier, visit www.coachmenrv.com.

your northernspirit dealer



24/7 EMERGENCY ROADSIDE ASSISTANCE WITH VEHICLE PURCHASE*

TOWING
JUMP-STARTS
TIRE CHANGES
FLUID DELIVERY
LOCKOUT
SERVICE

WINCH-OUT
MOBILE MECHANIC
TECHNICAL
SUPPORT
DEALER LOCATOR
SERVICES



*VALID FOR 1 YEAR FROM DATE OF PURCHASE



PRE-DELIVERY INSPECTION FACILITY

20,000 square feet of quality assurance. The bare essentials for a premium product. This state-of-the-art facility gives immediate daily feedback to production for quality assurance in every unit built.



FREE MEMBERSHIP
to Forest River Owners' Group

www.forestriverfrog.com



Check out the
Northern Spirit
website



Learn More
Scan this barcode using
a QR Reader on your
smart phone to learn
more about Forest River.



All information contained in this brochure is believed to be accurate at the time of publication. However, during the model year, it may be necessary to make revisions and Forest River, Inc., reserves the right to make all such changes without notice, including prices, colors, materials, equipment and specifications as well as the addition of new models and the discontinuance of models shown on this poster. Therefore, please consult with your Coachmen Inc., dealer and confirm the existence of any materials, design or specifications that are material to your purchase decision. © 2024 Northern Spirit by Coachmen RV, a division of Forest River Inc., a Berkshire Hathaway company, All right reserved 02/24

www.coachmenrv.com/northernspirit