

tiMe

**CYPRESS**

2008 Fifth Wheel



**now** is the



tiMe





Isn't it **tiMe**?





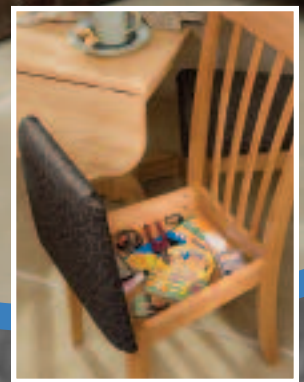
...to do some exploring? Hit the road? Find yourself? Step up to Newmar? We think so, and we have a Cypress just for you. Sit back and relax in a fifth wheel that features comfort, quality and affordability. From the handcrafted wood cabinetry to the hide-a-bed sofa, this RV comes standard with comfort and peace of mind. It is designed to meet your needs and go beyond...whether you're a well-seasoned RVer or a first-timer.

Stepping up to the Cypress fifth wheel means discovering Newmar's legendary old-world craftsmanship. It's what sets Cypress apart from other fifth wheels in its class. It's what makes kitchen toe kicks, raised-panel hardwood doors, freestanding dinette table and chairs – with hidden storage – and a full video and audio entertainment package standard. It's what will make you proud to own your Cypress for years to come.

It's time to discover the beauty that abounds from tip to tail and everywhere in between. That's the Newmar difference.

*35KSRL shown with Cedar décor and Oak cabinetry.*





...and your favorite meals in the Cypress kitchen. All the amenities

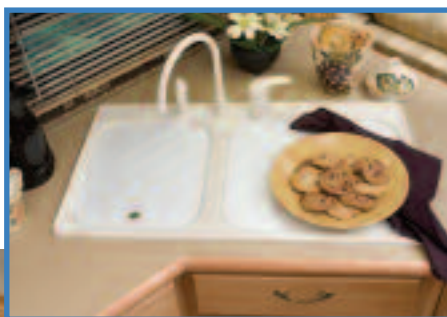
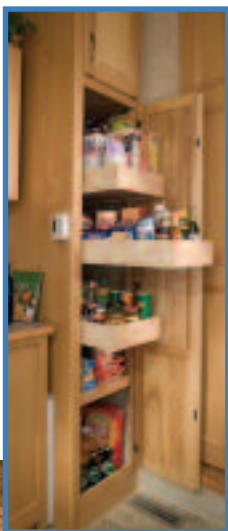
you need for whatever meal you desire are available in the beautifully appointed kitchen. The handsome hardwood, raised-panel cabinet doors tuck away all your provisions inside the cathedral height cabinets. Space abounds within the deep pullout drawers and fully adjustable sliding pantry. The cabinets complement the hardwood-edged laminate countertops, wood laminate steps with hardwood bullnosing, and vinyl flooring. Top-of-the-line appliances help you whip up your favorite fares with ease. You'll feel like you're home with the eight-cubic-foot refrigerator, Dometic® microwave, 22-inch oven and

three-burner cooktop with piezo ignition. The paper towel holder, built-in Corian® knife block, molded silverware divider tray and Teflon® sink cover are within reach to make preparation even easier.

Sit down at the Super Slider freestanding dinette table to enjoy your meal or chat with friends. Relax in the dinette chairs with in-seat storage that easily stow placemats or playing cards. Create the perfect mood for any occasion with the day/night pleated shades and overhead light. It's the ideal place to sit back with coffee in hand to reflect on all your journeys.



# Enjoy the moment







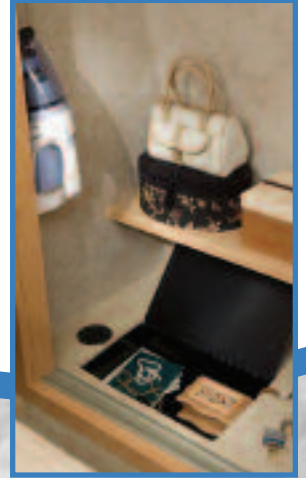
...nestled under the suede bedspread that rests atop the King Koil™ queen-size bed. The bedroom suite of your Cypress is just the place to lie back, delve into your favorite book and unwind. The carefully chosen décor with hardwood fascias, pleated day/night shades and fabric headboard soothes you into relaxation while you enjoy the optional LCD television or grab some shut-eye.



time  
Spend some

Cypress easily houses all your travel needs thanks to the cedar-lined shelf, bureau with toe-kick and easily accessible under-bed storage. For added protection, stow your valuables in the floor safe that comes as part of the optional convenience package.

After a long day of traveling, lose yourself in the one-piece shower with molded seat and privacy rain glass that also houses an overhead courtesy light and skylight. Afterwards, whirl away the steam or just freshen up the water closet with the Create-A-Breeze vent with auto lift; quickly enabling plenty of fresh air movement. The well-finished vanity area allows you to get ready in style with a seamless laminate countertop with hardwood edging and mirrored cabinet with radiant overhead lighting. Underneath the cabinet, the water system monitor panel and switches are positioned for quick and convenient access.

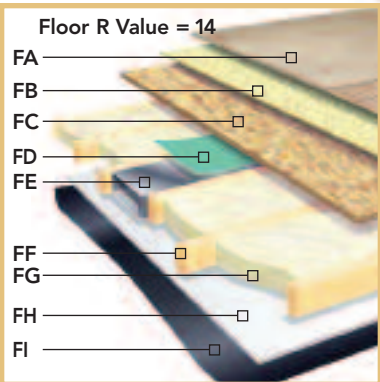
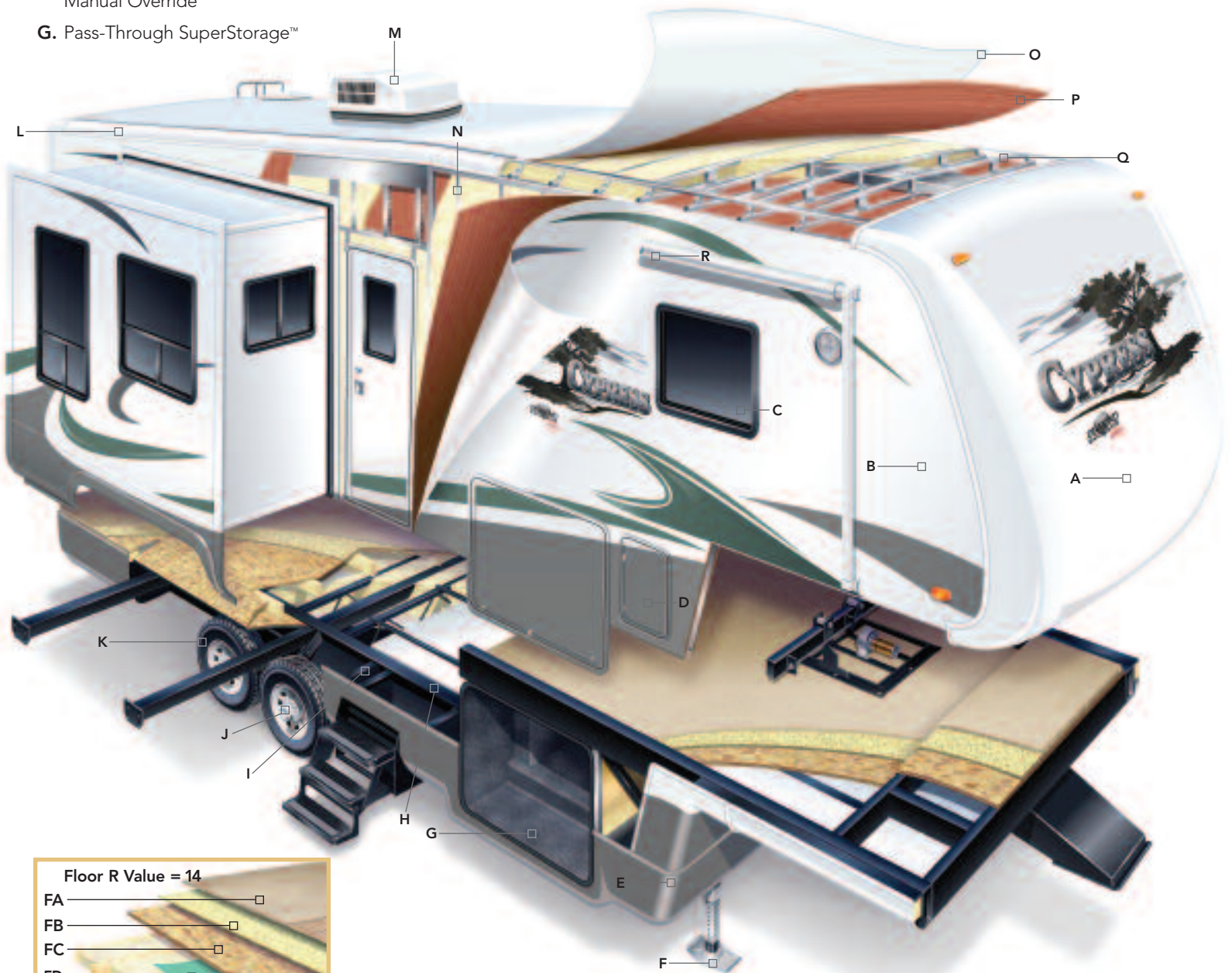




# Explore the Lasting Quality.

Your Cypress fifth wheel reflects Newmar's long history of product innovation and industry "firsts." You can depend on the exacting standards and meticulous care by which this fifth wheel is built. It's a showcase for Newmar value.

- A. Aerodynamic Gelcoated Fiberglass End Caps
- B. Gelcoated Exterior Sidewall
- C. Dark Tinted Safety Glass
- D. Dual Battery Box
- E. Molded Lower Sidewall Skirting and Gooseneck
- F. Power Front Jacks with Manual Override
- G. Pass-Through SuperStorage™
- H. 12" I-Beam Custom-Built Frame
- I. Full Height Frame Outriggers
- J. EZ Lube® Hubs
- K. MOR/ryde® LRE Suspension
- L. Radius Aluminum Roof Wraps
- M. 15,000 BTU Total Comfort™ Ducted Air Conditioning
- N. 16" O.C. Aluminum Sidewall Studding
- O. BriteTEK™ Roof
- P. Walkable Roof Decking
- Q. 16" O.C. Aluminum Roof Rafters
- R. Side Awning



- Floor R Value = 14**
- FA. Carpet/Vinyl Floor
  - FB. Residential-Grade Carpet Padding
  - FC. 5/8" Floor Decking
  - FD. Foam Panel for Added Insulation and Noise Reduction
  - FE. Aluminum Heat Ducting
  - FF. 2" x 3" Wood Floor Joists
  - FG. R-7 Fiberglass Batten Insulation
  - FH. 5/8" Bead Foam Insulation
  - FI. Aluminum Underbelly 4' x 8' Sheets

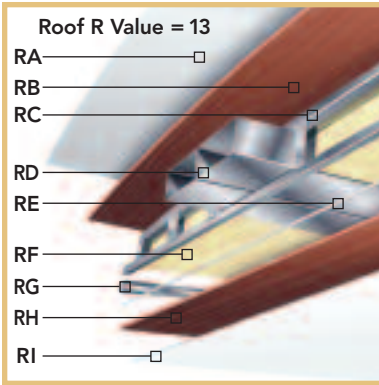


### The Limited Five-Year Structural Warranty

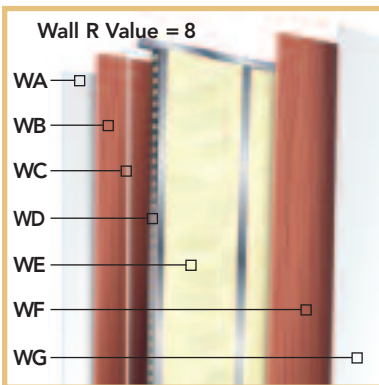
If any part of your Newmar recreational vehicle superstructure (which is the steel/aluminum structure of the sidewall, roof or frame) fails to perform properly within five years, from the date of purchase, due to faulty workmanship or material supplied by Newmar, it will be repaired without charge for either parts or labor by Newmar. This structural warranty is available only to the original purchaser and is non-transferable.

### Newmar Express Limited Warranty

As proof of our commitment to you, we at Newmar back every Cypress fifth wheel with our industry-leading, one-year Newmar Express Limited Warranty. Ask your dealer for details.



- RA. Strong, durable BriteTEK™ Roof
- RB. Walkable Roof Decking
- RC. Aluminum Rafter Framing
- RD. Central Air Conditioning Ducting
- RE. Sikaflex® Adhesive
- RF. R-11 Fiberglass Batten Insulation
- RG. Aluminum Stringer Framing
- RH. 3/16" Plywood Ceiling Panel
- RI. Vinyl Overlay



- WA. Gelcoated Fiberglass Exterior Sidewall
- WB. 3/16" Plywood Exterior Wall
- WC. Sikaflex® Adhesive
- WD. Aluminum Framing with C-Channels
- WE. R-7 Fiberglass Batten Insulation
- WF. 3/16" Plywood Interior Wall
- WG. Vinyl Overlay



1. Long-Lasting and Extra-Bright LED Taillights give you greater peace of mind for safer traveling. The energy-efficient lights stand out and are more visible during all weather conditions.

2. Manually Operated Sliding Porch with triple step and handrail is available as an option. It provides a wider platform for safety and stability entering and exiting the coach.



3. The Newmar Chrome Badge, a symbol of quality, adds a touch of class and beauty to the Cypress end cap.

4. MOR/ryde™ Pin Box allows you to enjoy a smooth, comfortable towing experience. The optional pin box diminishes the transfer of forces from the fifth wheel to the truck, acting as a cushion to reduce the effect of road shock.

5. A Convenient Outside TV Hookup and Outlet are available so you can enjoy the big game or the Friday night movie fest in the great outdoors.

6. Expansive Pass-Through SuperStorage™ Area is heated and lighted. It boasts a handy cargo hook and three-way access. It also provides access to the separate utility compartment and houses the water pump for sound isolation.

# the Beauty Within Extra Mile Differences

What makes Newmar different? Newmar understands the real world of RV travel and works diligently to design and build quality products that provide comfort and superior performance. Newmar designers do things a bit differently, taking more time and using more materials to get it right. As a vertically integrated manufacturer, Newmar builds much of the recreation vehicle themselves and relies less on sub-assembly suppliers. That means more control over design and quality. Newmar engineers better understand the unit as a whole and know how to create a solid, strong RV that offers innovation, convenience and durability. Going that extra mile to create a top-quality fifth wheel results in a peace of mind unique to Newmar owners. **That's the Newmar difference.**



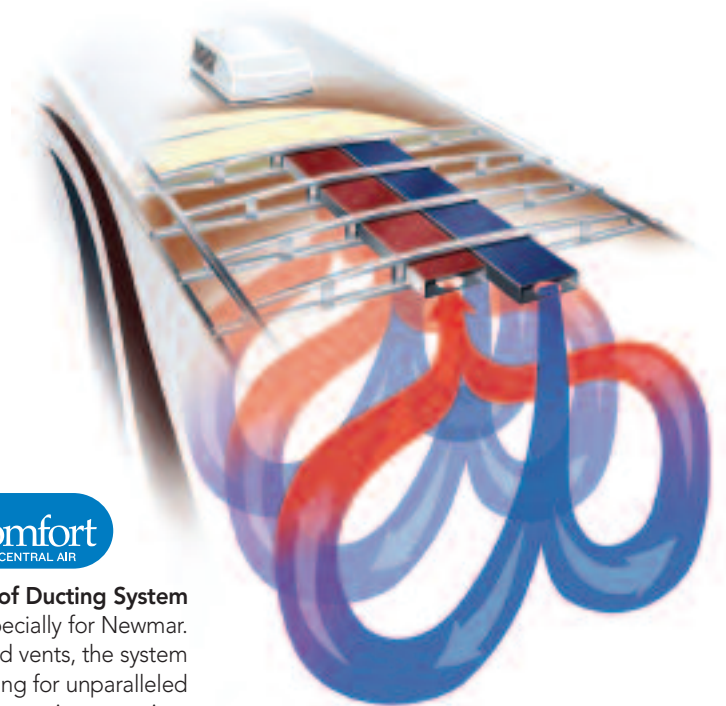
**Newmar Builds Walls and Roofs** residential-style with studs located 16 inches on-center. Extra C-channel aluminum studs and extra welds may cost more, but they provide a superior wall structure. Stud construction also allows for residential-style wiring and conveniently located switches. Walls and wall studs are then bonded with a technologically advanced adhesive, Sikaflex, that is durable and flexible to absorb and soften the effects of travel.



**Cantilevered Aluminum Roof Trusses** are fabricated by Newmar and placed 16 inches on-center to provide superior strength. Again, extra aluminum and extra welds provide extra durability.



**The Total Comfort® Dual In-Roof Ducting System** was engineered by cooling experts especially for Newmar. With multiple strategically-placed vents, the system provides true central air conditioning for unparalleled cooling efficiency, balance and whisper-quiet operation.



**An Incomparable Superstructure, the Cypress Chassis** is designed and built by Newmar with stronger steel, extra reinforcements and additional welds to make it exceptionally robust. The huge 12-inch steel I-beams provide superior Moment of Inertia (stiffness) and Section Modulus (bending stress) over smaller, thinner I-beams and stacked tube steel. Engineers take advantage of the entire height of the I-beam to attach full 12-inch steel outriggers for extended stability and strength. Many other outriggers are partial height. Newmar believes that a home on wheels should start with a solid and stable foundation.

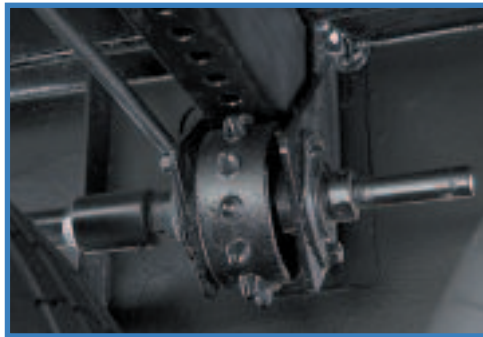






**Newmar-Made Skid Bars** are a lot different from the flimsy ones that are more commonly used. Constructed of thick bar steel and reinforced with even more steel, this is the super-duty, real-world version to help protect the RV underbelly from abruptly angled roadway approaches. A Newmar exclusive.

**The Newmar Slideout Cog Wheel**, was designed for a fuller engagement of the gears to prevent common gear slippage. The complete slideout system – from the superior strength foundation through the durable high-torque motor mechanism, to the independent operation and the unique self-storing travel-lock arms – is designed to provide years of convenient, smooth, dependable service.



**Newmar Pioneered and has a Patent on the Flat-Floor Slideout.** But sliding a room in and out poses some out-of-the-way engineering and sealing challenges to do it right. Newmar developed an improved slideout wedge roof design that forms a tighter closure when the roof is extended. A specially developed double-bulb, superior-memory seal provides protection from outside elements and insects, and sweeps off debris on room retraction.

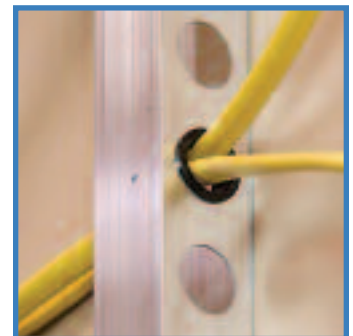


**MOR/ryde® LRE Suspension** significantly cushions and absorbs road shock to provide a softer ride and smoother, safer towing.

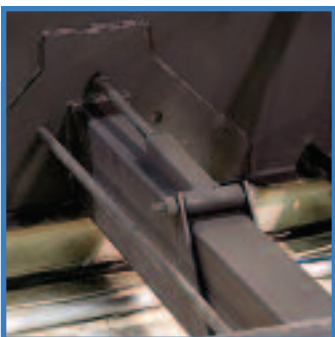


**Cypress Floors** are well-heated, double-insulated, and constructed using 24-foot continuous run sheets of Weyerhaeuser sub-flooring. Fewer seams reduce the infiltration of noise, moisture, and outside heat and cold. Most other RV floors are insufficiently heated in the extremities and pieced together with 4-foot sheets.

**Newmar Inspectors** review each and every coach at three major manufacturing points and at several targeted spots throughout construction. Not some time, not part-time; Newmar allocates full-time, dedicated, experienced positions to assure quality and maintain construction integrity.



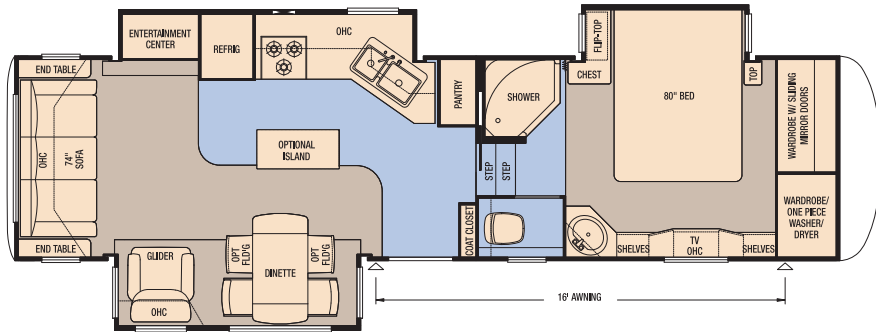
**Grommets in Stud Holes** provide extra protection to wires for years of trouble-free use. Newmar uses a premium-grade, non-sag elastomeric wall adhesive, Sikaflex, to completely bond the wall and studs.



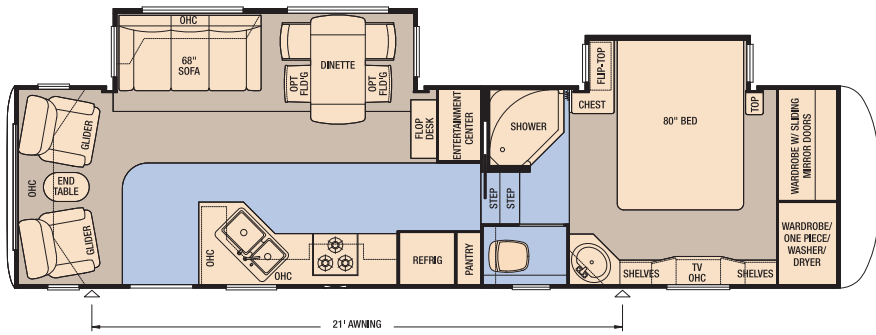
**The Newmar-Originated Slideout**, with its 2x4 steel rails and massive reinforcement, is the strongest, most reliable and most durable on the market. A superior-strength platform results from welding hefty guide rail tubes to both mainframe rails and welding extra reinforcement into the system. Closed-channel frames keep small animals and outside debris from entering the coach.

# timeless Experience Design

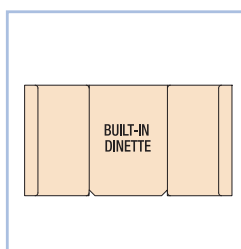
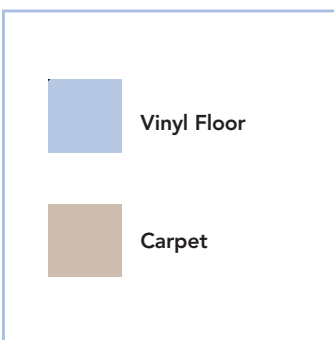
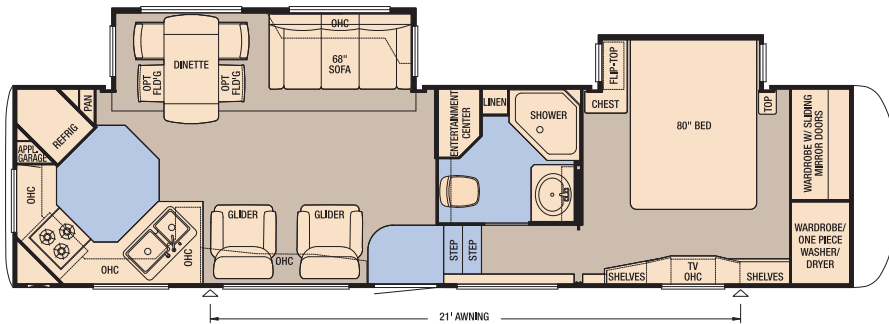
Model	CPFW 31RLKS
Tire Size	235/85R16-G
GAWR	6,000
GVWR	14,625
App. Length	34' 8"
App. Height	12' 11"
Width	97"
App. Dry Weight	12,050
App. Hitch Weight	2,290
Fresh Water (gal.)	75
Grey (gal.)	84
Sewage Cap. (gal.)	42
App. Hitch Height	47"
Heat Cap. (BTU)	35,000



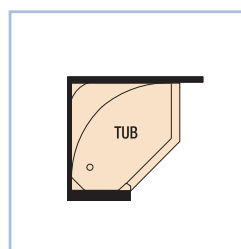
Model	CPFW 32CKRL
Tire Size	235/85R16-G
GAWR	6,000
GVWR	14,625
App. Length	35' 1"
App. Height	12' 11"
Width	97"
App. Dry Weight	11,700
App. Hitch Weight	2,460
Fresh Water (gal.)	75
Grey (gal.)	84
Sewage Cap. (gal.)	42
App. Hitch Height	47"
Heat Cap. (BTU)	35,000



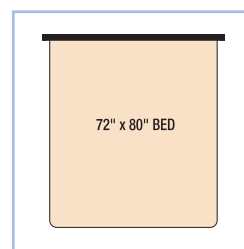
Model	CPFW 32RKSH
Tire Size	235/85R16-G
GAWR	6,000
GVWR	14,625
App. Length	35' 8"
App. Height	12' 11"
Width	97"
App. Dry Weight	12,225
App. Hitch Weight	2,810
Fresh Water (gal.)	75
Grey (gal.)	84
Sewage Cap. (gal.)	42
App. Hitch Height	47"
Heat Cap. (BTU)	35,000



Built-In Booth Dinette with (2) Drawers option available on all models.



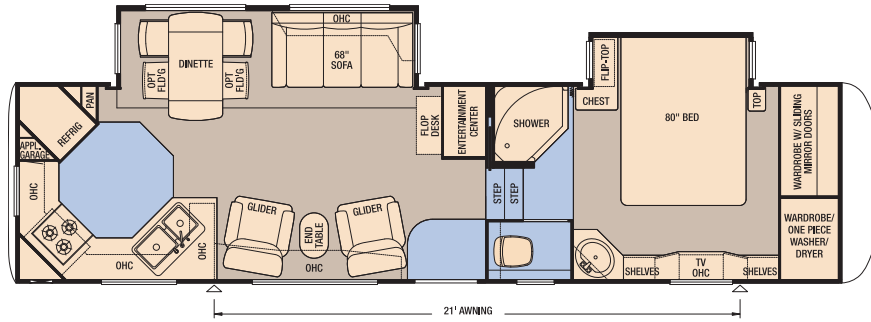
Fiberglass Tub with Glass Door option available on most, not all, models.



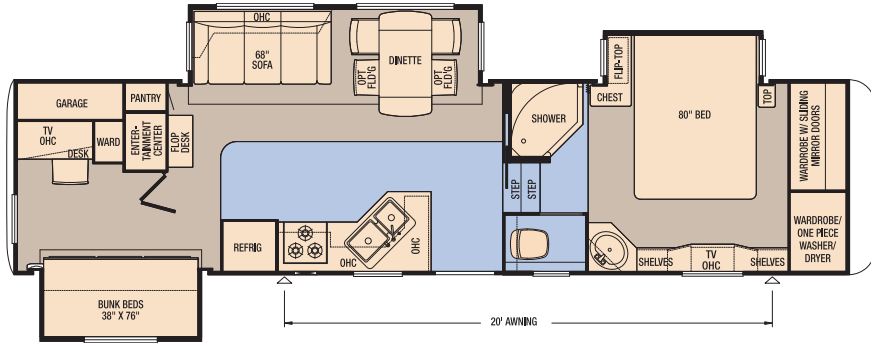
King-Size Bed available on all models except 39CKDB.



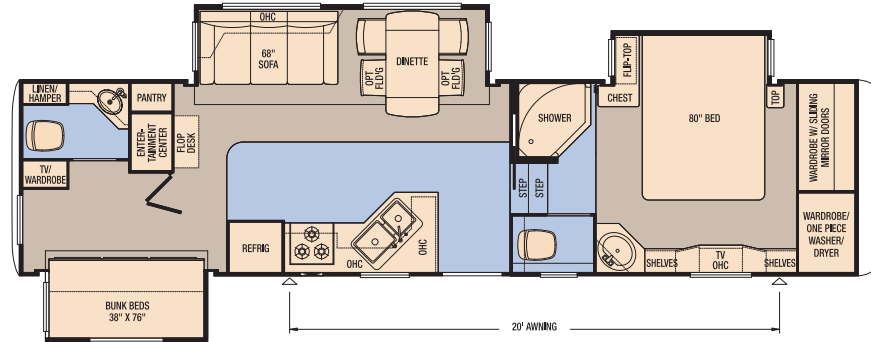
<b>Model</b>	<b>CPFW 32SLRK</b>
Tire Size	235/85R16-G
GAWR	6,000
GVWR	14,625
App. Length	35' 2"
App. Height	12' 11"
Width	97"
App. Dry Weight	11,915
App. Hitch Weight	2,620
Fresh Water (gal.)	75
Grey (gal.)	84
Sewage Cap. (gal.)	42
App. Hitch Height	47"
Heat Cap. (BTU)	35,000



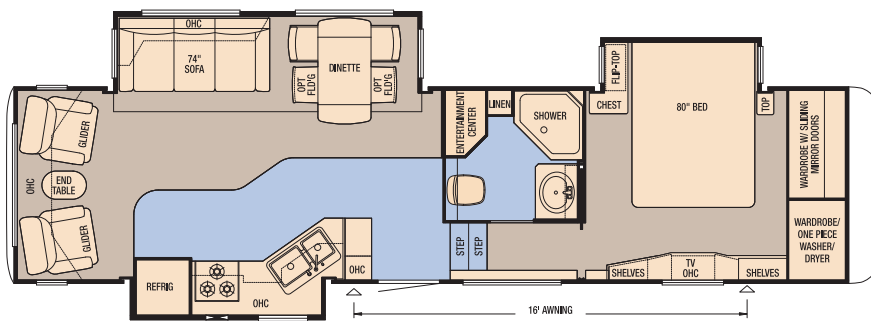
<b>Model</b>	<b>CPFW 33RBCB</b>
Tire Size	235/85R16-G
GAWR	7,000
GVWR	16,600
App. Length	36' 7"
App. Height	12' 11"
Width	97"
App. Dry Weight	12,900
App. Hitch Weight	2,450
Fresh Water (gal.)	75
Grey (gal.)	84
Sewage Cap. (gal.)	42
App. Hitch Height	47"
Heat Cap. (BTU)	35,000



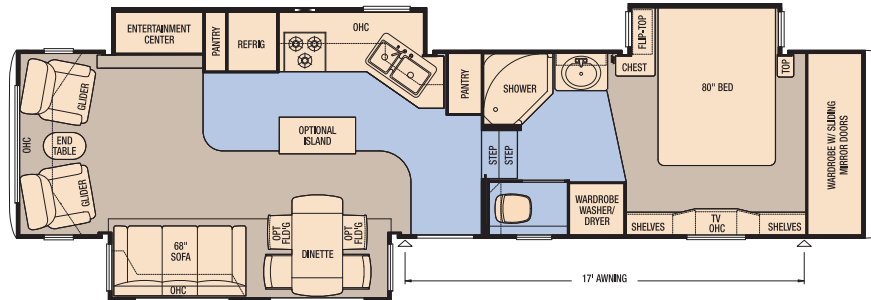
<b>Model</b>	<b>CPFW 33RBHB</b>
Tire Size	235/85R16-G
GAWR	7,000
GVWR	16,600
App. Length	36' 7"
App. Height	12' 11"
Width	97"
App. Dry Weight	12,930
App. Hitch Weight	2,455
Fresh Water (gal.)	75
Grey (gal.)	84
Sewage Cap. (gal.)	42
App. Hitch Height	47"
Heat Cap. (BTU)	35,000



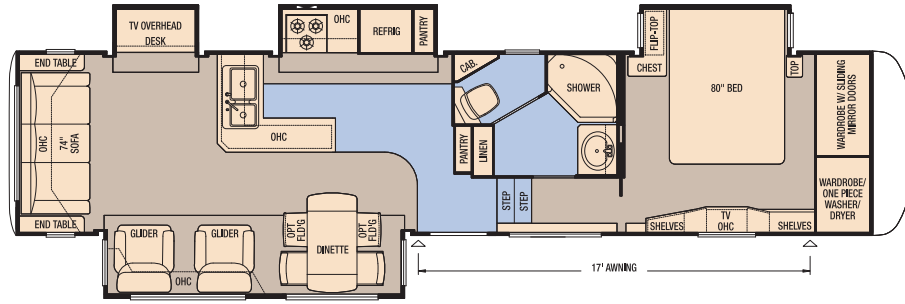
<b>Model</b>	<b>CPFW 33RLSH</b>
Tire Size	235/85R16-G
GAWR	7,000
GVWR	16,600
App. Length	36' 4"
App. Height	12' 11"
Width	97"
App. Dry Weight	12,725
App. Hitch Weight	2,925
Fresh Water (gal.)	75
Grey (gal.)	84
Sewage Cap. (gal.)	42
App. Hitch Height	47"
Heat Cap. (BTU)	35,000



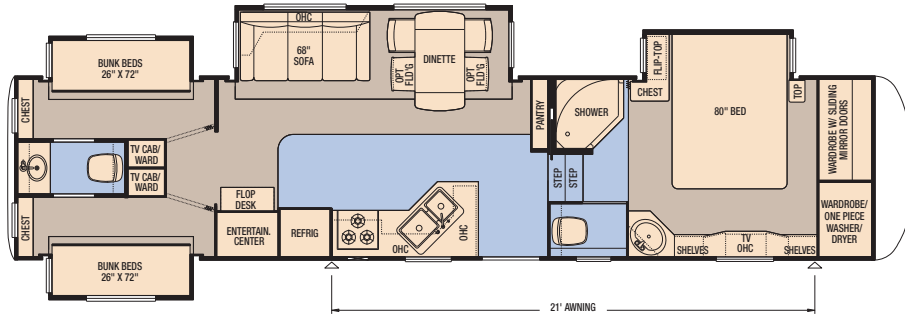
<b>Model</b>	<b>CPFW 35KSRL</b>
Tire Size	235/85R16-G
GAWR	7,000
GVWR	16,600
App. Length	38' 7"
App. Height	12' 11"
Width	97"
App. Dry Weight	13,350
App. Hitch Weight	2,950
Fresh Water (gal.)	75
Grey (gal.)	84
Sewage Cap. (gal.)	42
App. Hitch Height	47"
Heat Cap. (BTU)	35,000



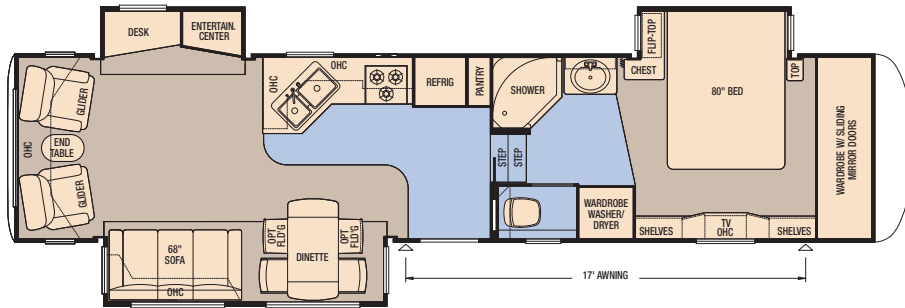
Model	CPFW 36LKSH
Tire Size	235/85R16-G
GAWR	7,000
GVWR	16,600
App. Length	39' 7"
App. Height	12' 11"
Width	97"
App. Dry Weight	13,820
App. Hitch Weight	2,350
Fresh Water (gal.)	75
Grey (gal.)	84
Sewage Cap. (gal.)	42
App. Hitch Height	47"
Heat Cap. (BTU)	35,000



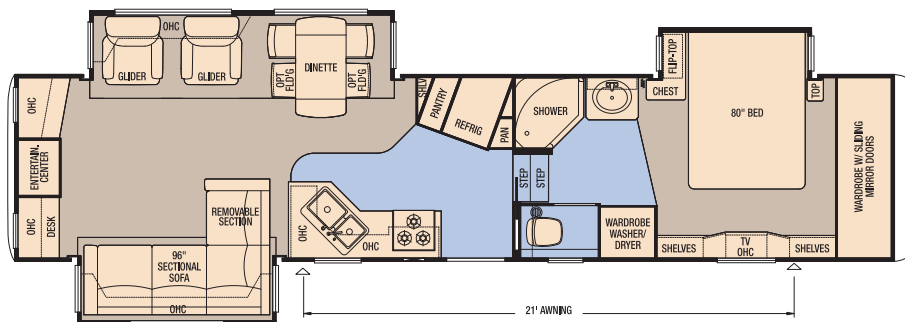
Model	CPFW 36RBD5
Tire Size	235/85R16-G
GAWR	7,000
GVWR	16,600
App. Length	39' 9"
App. Height	12' 11"
Width	97"
App. Dry Weight	13,700
App. Hitch Weight	2,630
Fresh Water (gal.)	75
Grey (gal.)	84
Sewage Cap. (gal.)	42
App. Hitch Height	47"
Heat Cap. (BTU)	35,000



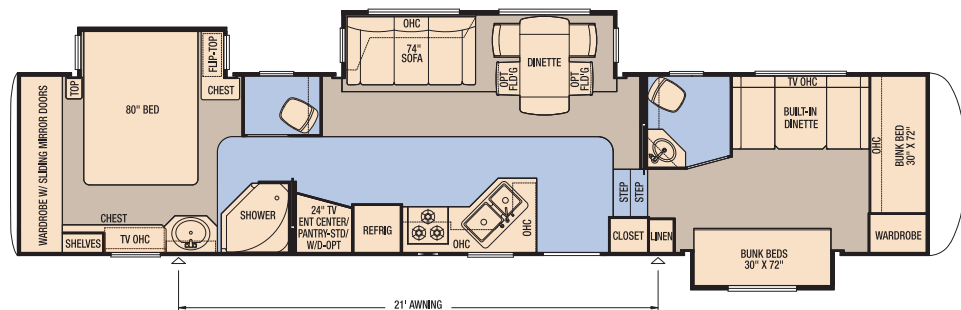
Model	CPFW 36RLSK
Tire Size	235/85R16-G
GAWR	7,000
GVWR	16,600
App. Length	38' 11"
App. Height	12' 11"
Width	97"
App. Dry Weight	12,980
App. Hitch Weight	2,595
Fresh Water (gal.)	75
Grey (gal.)	84
Sewage Cap. (gal.)	42
App. Hitch Height	47"
Heat Cap. (BTU)	35,000



Model	CPFW 37LSRE
Tire Size	235/85R16-G
GAWR	7,000
GVWR	16,600
App. Length	40' 1"
App. Height	12' 11"
Width	97"
App. Dry Weight	13,690
App. Hitch Weight	2,740
Fresh Water (gal.)	75
Grey (gal.)	84
Sewage Cap. (gal.)	42
App. Hitch Height	47"
Heat Cap. (BTU)	35,000



Model	CPFW 39CKDB
Tire Size	235/85R16-G
GAWR	7,000
GVWR	16,600
App. Length	42' 4"
App. Height	12' 11"
Width	97"
App. Dry Weight	14,720
App. Hitch Weight	2,800
Fresh Water (gal.)	75
Grey (gal.)	84
Sewage Cap. (gal.)	42
App. Hitch Height	47"
Heat Cap. (BTU)	35,000





# Opt for Classic Beauty



(Standard) Vinyl Graphics



(Optional) Vinyl Graphics with Painted Skirt

## Cypress offers the optional Diamond Package including:

- Padded Vinyl Ceiling
- Decorative Wardrobe Header
- Second Sink Cover
- Convenience Package
- Halogen Ceiling Lights
- Upgraded Slideout Fascias
- Deluxe Living Room Mirror
- Polished Aluminum Wheels
- Upgraded Headboard with Bedpost Accents
- Rear Ladder
- Raised-Panel Interior Passage Door
- Tripod Satellite Prep
- PolarPak R-19" Insulation (roof, floor, front and rear end caps)
- Washer/Dryer Prep
- Exterior Vinyl Graphics with Painted Skirt



## Interior Color Options

(Standard) Oak



(Optional) Plank Flooring



(Optional) Fall Spice



(Optional) Plank Flooring



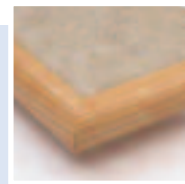
(Standard) Hardware



(Standard) Vinyl Flooring



(Standard) Countertop



(Optional) Samsung Staron™ Countertop



Cedar



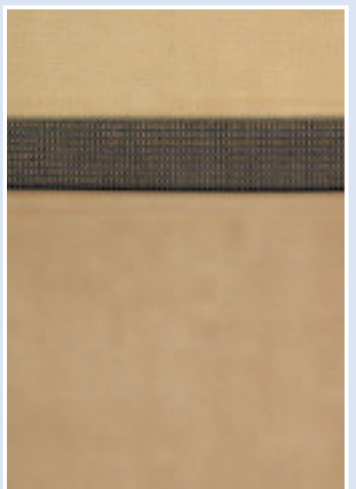
Palm



South Beach



Steel Blue



## Optional Features

### Exterior

Vinyl Graphics with Painted Skirt

### Air Conditioning and Heating

15M Penguin Central Air Conditioner  
15M Penguin Central Air Conditioner with Heat Pump  
Extra 13M Penguin Central Air Conditioner in Bedroom  
Wire and Brace for Second Air Conditioner

### Appliances and Accessories

20" LCD TV in Bedroom  
14" Flat Screen TV in Bunkroom\*  
26" LCD TV in Entertainment Center\*  
32" LCD TV in Entertainment Center\*  
Icemaker Added to Refrigerator\*

Norcold® 10 cu. ft. Refrigerator

30" Convection Microwave and Three-Burner Cooktop

Convenience Package:  
Includes Floor Safe, Hair Dryer, Cordless Vac, Pillow-Top Mattress and Sofa Pillows

Central Vacuum with Floor Port and Deluxe Tool Kit

Electric Fireplace\*

Entertainment Center with Pullout Swivel/Slide Tray at Main TV\*

Prep for Ground Tripod Satellite Dish with Phone and TV Jacks and Receptacle

Roof-Mounted Satellite Prep

Washer/Dryer Prep

Compact Washer/Dryer\*

Stackable Washer/Dryer\*

12 Gal. Suburban Water Heater

### Cabinets and Furniture

Fall Spice Cabinetry  
Built-In Booth Dinette  
UltraLeather Euro Recliner(s) with Ottoman\*  
Island Kitchen Base Cabinet\*  
Kitchen Countertop Extension\*  
King Bed with 72" x 80" King Koil™ Mattress\*  
Two Fixed Dinette Chairs with In-Seat Storage  
Two Folding Dinette Chairs with In-Seat Storage  
Folding Desk Chair\*

### Electrical Features

7.0 kW Cummins Onan® Generator with Auto Changeover and Gen Prep (Gen Prep - Includes Energy Command and Fuel Tank with Gauge)

Generator Prep

Solar Prep

Battery Disconnect Switch

Halogen Ceiling Lights Throughout

### Exterior Features

Bike Rack Carrier  
Cargo Net in Pass-Through SuperStorage™  
Pullout Storage Tray  
Porch at Front Entrance Door  
Detachable Rear Ladder  
Rear 12V Power Twin Stabilizer Jacks

### Interior Features

Simulated Plank Floor in Kitchen and Foyer  
Staron™ Solid Surface Kitchen and Bath Countertops with Integrated Solid Surface Bowls  
Second Sink Cover

### Plumbing and Bath Features

Exterior Shower  
Fiberglass Tub with Glass Door  
12V Heat Pads for Holding Tanks  
(N/A on CSA Units)

### Windows, Awnings and Vents

Carefree® TravelR Power Side Awning  
Carefree® Summit Slideout Cover Package\*

## Standard Features

### Air Conditioning and Heating

15M Brisk Air Central Air Conditioner  
Two 30 lb. Propane Bottles with Auto Regulator  
35,000 BTU Furnace with In-Floor Ducted Heat  
Propane Leak Detector

### Appliances and Accessories

10 Gal. Gas/Electric Water Heater with Direct-Spark Ignition  
Microwave Oven  
Entertainment Package:  
24" Flat Screen TV (per floorplan) and Surround Sound System with Recessed Speakers, DVD, CD, AM/FM Stereo Tuner

Norcold® 8 cu. ft. Refrigerator with Thermostat  
Three-Burner Cooktop with Piezo Ignition  
22" Oven

Flush-Mounted, Bi-Fold Range Cover  
Cable TV Connection with RG-6 Coax

Living Room Ceiling Fan

Corian® Knife Block behind Range

Hardwood Raised Six-Panel Refrigerator Front

Paper Towel Holder in Kitchen

Cooktop Hood with Light and Fan

Phone Jack in Living Area

TV Antenna with Power Booster and Two Interior Jacks

Two Bedroom Radio Speakers with On/Off Switch

Fire Extinguisher, Smoke Detector and Carbon Monoxide Detector

### Cabinets and Furniture

Oak Cabinetry with Hardwood Raised-Panel Cathedral Overhead Cabinet Doors  
Pre-Drilled and Screwed Cabinetry  
Hide-A-Bed Sofa\*  
Glider/Recliner Chairs\*  
Bar Stools\*

Chair End Table with Magazine Rack\*

Metal Drawer Guides

Freestanding Dinette Table with Lift-Top Storage

Two Fixed Dinette Chairs with In-Seat Storage

Laminate Kitchen and Bathroom Countertops with Hardwood Edging

Acrylic Kitchen and Bathroom Sinks

One Teflon® Sink Cover

SuperStorage™ Bedroom Wardrobe with Two Full-Width Shoe Racks and Top Shelf Cedar Lining

Laundry Hamper with Cedar Lining

Lifts on Bed Top

Kitchen Pantry with Adjustable Shelves\*

Living Room Mirror

Computer Desk\*

Decorative Bedroom Dresser Toe Kick

60" x 80" Queen Innerspring Mattress

### Windows, Awnings and Vents (cont.)

Create-A-Breeze Vent with Auto Lift in Kitchen and Bathroom

Double-Pane, Tinted Safety-Glass Windows

Clear Skylights in Bath, Kitchen and Living Room

### Construction Features

PolarPak R-19™ Insulation in Roof, Floor, Front and Rear End Caps

### Chassis Features

Three-Inch Non-Adjustable Lift Kit  
MOR/ryde® Rubber Pin Box  
Electric Over Hydraulic Disc Brakes  
Polished Aluminum Wheels

### Electrical Features

110V Exterior Receptacle in Storage Compartment  
12V Lighting Throughout  
50 Amp Electrical Service with Detachable Cord  
55 Amp Converter  
Convenience Lights at Main Entry Door, Entry Door Step, Sewer Hook-Up, Hitch and Water Works Compartment  
Decorative Light over Dinette  
Dual Battery Box Compartment  
Two Exterior Security Lights  
Fluorescent Light over Kitchen Sink  
Lighted Exterior Storage Compartments  
Wall Reading Lights in Living Area Slideouts

### Exterior Features

Vinyl Graphics  
30" Gelcoated Radius Entry Door  
BriteTEK™ Roof with Walkable Decking and Radius Aluminum Roof Wrap  
Cargo Hook in Exterior Storage Area  
Extendable Grab Handle at Entrance Door  
Gelcoated Exterior Sidewalls and Baggage Doors  
Gelcoated Fiberglass End Caps  
Molded Gooseneck and Pass-Through Storage Wraps  
Molded Fender Wells  
Power Front Jacks  
Quick Release H/D Pin for Front Jack Legs  
Rear Skid Bars Prepped for Bike Rack Attachment  
Rear Stabilizer Jacks (1 pair)  
Main Entrance Door with Triple Step  
Heated Pass-Through SuperStorage™ Basement Compartment  
Dedicated Compartment in Basement for Utilities

### Interior Features

Sculpted Carpet with High-Density Padding in Living Room and Bedroom  
Vinyl Floor in Kitchen, Foyer and Bath  
Day/Night Pleated Window Shades with Jabots in Living Room and Bedroom  
Mini Blinds in Kitchen and Bathroom  
Decorative Wall Border  
Interior Assist Handle at Main Entry Door  
Kitchen Wastebasket  
Lazy Susan in Kitchen Overhead Cabinet\*  
Quilted Bedspread with Shams  
Quilted Fabric Headboard  
Molded Silverware Divider Tray  
Laminate Woodgrain Steps with Hardwood Bullnose Trim  
Décor Glass Accents in Living Room  
Flat Panel Interior Passage Doors

### Plumbing and Bath Features

Demand Water System with SHURflo® Pump  
One-Piece Fiberglass Shower with Molded Seat and Glass Enclosure\*  
High-Rise Kitchen Faucet with Pullout Sprayer  
Medicine Cabinet with Deluxe Lighting  
Monitor Panel  
Sewage Holding Tank Rinse  
Sewage Hose Storage Tray  
Lighted, Heated and Enclosed Exterior Water Works Compartment  
Thetford™ Aqua Magic V Toilet with Spray Attachment  
Shower Courtesy Light  
In-Line Water Filter for Entire Unit  
Water Heater Bypass

### Construction Features

12" I-Beam Custom-Built Frame  
5/8" Structurwood® Floor Decking  
Aluminum Framed Sidewalls, Roof, Front and Rear on 16" Centers  
Fully Heated and Insulated Holding Tanks  
Enclosed Underbelly with 4' x 8' Sheets of Aluminum Laminated to 5/8" Bead Foam  
Extended Pin Box  
Composite R-Values:  
Roof: R-13 Floor: R-14 Sidewalls: R-8

### Windows, Awnings and Vents

Create-A-Breeze Vent with Auto Lift in Bathroom  
Carefree® Fiesta Side Awning  
Bathroom Window, Blinds and Valance  
Dark Tinted Safety-Glass Windows  
Shower Skylight\*

### Chassis Features

Shock Absorbers  
16" G-Rated Tires  
Undermounted 16" G-Rated Spare Tire with Lift Kit  
MOR/ryde® LRE Suspension  
EZ Lube® Axles

\* Check with Dealership on Floorplan Availability



WHEN YOU KNOW THE DIFFERENCE™

**NEWMAR CORPORATION**  
355 N DELAWARE ST  
PO BOX 30  
NAPPANEE IN 46550-0030  
574-773-7791 Fax 574-773-2895  
[www.newmarcorp.com](http://www.newmarcorp.com)

Some features in our literature are optional. Colors and finishes are photographic representations. The actual materials may look different. Prices, specifications and floorplans are subject to change at Newmar's discretion, without prior notice or obligation. Please see your dealer for actual samples and specifications.  
©2007 Newmar Corporation. Litho in USA. NEW21366 5/07-30M

Your Official Cypress Dealer: