

Pleasure-Way



...The Pleasure-Way to Travel



Pleasure-Way Van



OPTIONAL REAR ELECTRIC SOFA

This new option for Pleasure-Way gives you comfortable seating for three and the added safety of three seat belts. By the simple push of a button this new electric sofa automatically reclines into a double bed. This option is available in the Excel-RL, Excel-MP, SRL & MPL floorplans.



STANDARD SLIDE OUT BATTERY COMPARTMENT

The addition of a slide out battery tray makes checking and servicing your auxiliary battery positively easy. Now, with a larger compartment an optional second battery can also be installed.

INTROD

THE PLEASURE-WAY

1998 will be the inaugural year of the Pleasure-Way Travel Club. Pleasure-Way is offering one year memberships. Motorhome. Newsletters, rates are available to members; affordable. to enjoy the R.V.



The Pleas

an Motorhomes

THE NEW LOOK FOR 1998

The vehicles featured in this brochure are built on 1997 Dodge chassis with 1998 Pleasure-Way Motorhome conversions. This interim brochure highlights new Pleasure-Way features for 1998 and a comprehensive brochure will be available soon after Chrysler releases their redesigned Chassis in early 1998.

OPTIONAL 13" TV & VCP

See the big picture with Pleasure-Way's new thirteen inch colour T.V. Pleasure-Way has upgraded the size of the optional T.V. from nine inches to the new thirteen inch unit. This makes your home away from home even that more comfortable. The optional VCP is built into the cabinet to complete this entertainment center.



DUCE AY TRAVEL CLUB

year for the Pleasure-Way
y will be giving away
with each 1998 Van
allies and caravans will be
rding more opportunities



STANDARD SIDE STORAGE COMPARTMENT

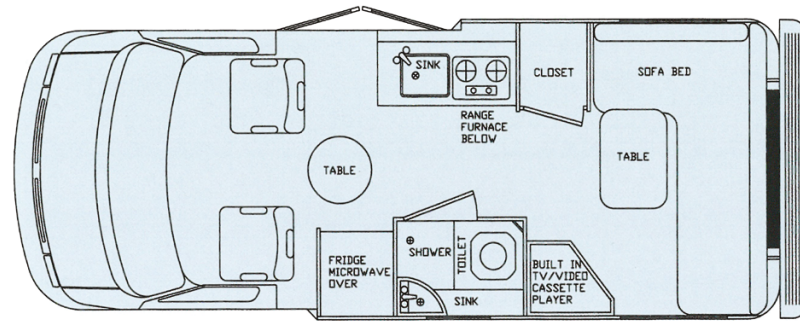
Storage space is always an important priority, so Pleasure-Way designed this exterior compartment to give you extra room to store those necessities, whether it be golf clubs or tool boxes.

sure-Way to Travel

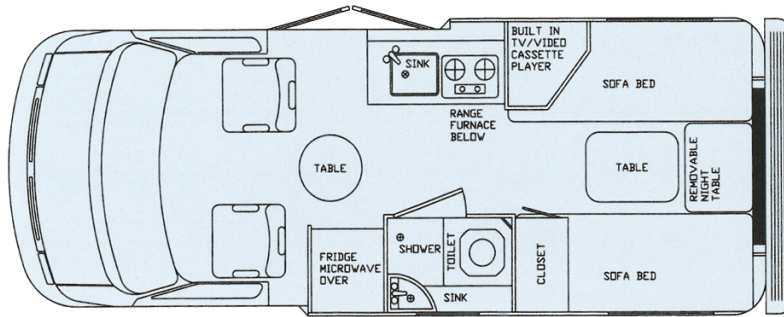
COACH SPECIFICATIONS & FEATURES

	Model Excel-RL	Model Excel-TW	Model Excel-MP	Model SRL	Model STW	Model MPL
Dometic 3-way Refrigerator (3 cu ft.)	X	X	X	X	X	X
Sanyo Microwave Oven	X	X	X	X	X	X
2 Burner LP Stove	X	X	X	X	X	X
Suburban 16,000 BTU Auto Ign Furnace	X	X	X	X	X	X
Thetford Flush Toilet	X	X	X	X	X	X
Shur Flo Demand Water System	X	X	X	X	X	X
Suburban 6 Gal. Auto Ign Water Heater	X	X	X	X	X	X
Interior Height 6'	X	X	X	X	X	X
Medicine Cabinet	X	X	X	X	X	X
Large 2nd Sink	X	X	X	X	X	X
Shower	X	X	X	X	X	X
Smoke Detector	X	X	X	X	X	X
CO Detector (with Generator or Gen Ready Only)	X	X	X	X	X	X
Fire Extinguisher	X	X	X	X	X	X
LP Detector	X	X	X	X	X	X
Fan Tastic Fan	X	X	X	X	X	X
Slide Out Auxiliary Battery	X	X	X	X	X	X
110 V/12V/30 Amp Convertor	X	X	X	X	X	X
Monitor Panel	X	X	X	X	X	X
Fresh Water Tank 114 L 30 U.S. Gal	X	X	X	X	X	X
Grey Water Tank 91 L 24 U.S. Gal	X	X	X	X	X	X
Black Water Tank 45 L 12 U.S. Gal	X	X	X	X	X	X
Propane Tank 30 L 8 U.S. Gal	X	X	X	X	X	X
Locking City Water/Fresh Water Fill	X	X	X	X	X	X
Captains Chair's Swivel & Recline	X	X	X	X	X	X
Rear Livingroom/Double Bed (54" x 73")	N/A	N/A	N/A	N/A	N/A	X
Rear Livingroom/Double Bed (54" x 79")	N/A	N/A	X	N/A	N/A	N/A
Rear Livingroom/Double Bed (73" x 54")	N/A	N/A	N/A	X	N/A	N/A
Rear Livingroom/Double Bed (79" x 54")	X	N/A	N/A	N/A	N/A	N/A
Twin Beds (26" x 73.5") King Size (73" x 73.5")	N/A	N/A	N/A	N/A	X	N/A
Twin Beds (27.5" x 74", 27.5" x 72") King Size (79" x 72")	N/A	X	N/A	N/A	N/A	N/A
Sleeper Seats	N/A	N/A	X	N/A	N/A	X
Hehr Awning Style Windows	X	X	X	X	X	X
Extra Cocktail Table	X	X	X	X	X	X
Locking Power Cord Compartment	X	X	X	X	X	X
Sewer Hose Storage Compartment	X	X	X	X	X	X
Continental Spare Tire Carrier	X	X	X	X	X	X
Golf Club Storage	X	X	N/A	X	X	N/A
Spare Trunk (N/A with Generator)	X	X	X	X	X	X
Padded Engine Cover	X	X	X	X	X	X
Porch Light	X	X	X	X	X	X
Exterior 110V Receptacle	X	X	X	X	X	X
Cable TV Hook Up	X	X	X	X	X	X
Hide-A-Tenna TV Antenna	X	X	X	X	X	X
Water Heater By-Pass	X	X	X	X	X	X
Fiberglass Running Boards	X	X	X	X	X	X
Two Exterior Storage Compartments	X	X	X	X	X	X
Rear Air Spring Suspension	X	X	X	X	X	X
Auxiliary Battery Disconnect	X	X	X	X	X	X

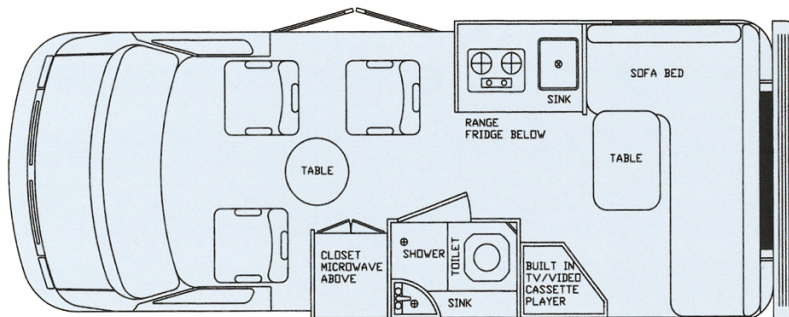
LEGEND: x = Standard N/A = Not Available



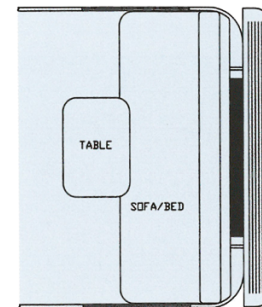
Excel-RL



Excel-TW



Excel-MP



Optional Sofa/Bed

PLEASURE-WAY INDUSTRIES

builds three distinctive floorplans built on your choice of body styles. The Standard body Series SRL, STW & MPL is built on the Dodge B3500 Maxi van chassis.

The Excel series (Excel-RL, Excel-TW & Excel-MP) is **PLEASURE-WAY's** wide body line which is built on the same chassis but is widened six inches to give you more interior space.

The optional rear electric sofa replaces the rear living room in the Excel-RL, Excel-MP, SRL & MPL floorplans.

Optional fourth chair (sleeper seat) available in Excel-MP and MPL models. Some feature deletions will apply when ordering fourth seat.

DODGE B 3500 CHASSIS SPECIFICATION

Gross Vehicle Weight 8510 Lbs. 3861 Kgs. ~ Length Bumper to Bumper 19' 2" 5872 mm ~ Wheel Base 127" 3241 mm ~ Width 6' 6" 2032 mm Original Body ~ Width 7'1" 2160 mm Wide Body ~ Height 8' 5" 2565 mm ~ Fuel Tank Capacity 35 U.S. Gal. 132 L ~ 318(5.2L) Magnum V8 MPI engine ~ Power 220 HP @ 4,400 RPM ~ Torque 295 lb-ft @ 3,200 RPM ~ 360(5.9L) Magnum V8 ~ Power 230 HP @ 4000 RPM ~ Torque 330 lb-ft @ 3200 RPM ~ Axle Ratio 3.92 ~ Automatic Transmission with Electronic Overdrive ~ Towing Capacity (no passengers, no cargo) 4,000 lbs ~ 16" Steel Belted Radial Tires ~ Front Stabilizer Bar ~ Rear Anti Lock Brakes ~ Factory Air ~ Tilt Steering ~ Cruise Control ~ Power Door Locks ~ Power Windows ~ AM/FM Stereo Cassette ~ Power Remote Mirrors ~ Matching Spare Tire ~ Drivers Side Air Bag.

OPTIONAL EQUIPMENT

Onan 2.8 Generator ~ Generator Ready ~ Coleman 7100 Roof Air ~ Penguin 11,000 Roof Air ~ 13" 12V Color TV/VCP (Except Excel-MP & MPL) ~ 9" DC Colour TV/VCP (Excel MP & MPL) ~ TV Ready ~ Exterior Shower ~ Hitch Receiver & Wiring ~ Electric Sofa ~ White Cabinetry ~ 11' Awning ~ Screen Package ~ Coffee Maker (Except Excel-MP & MPL) ~ 360 Engine Upgrade ~ California Emissions ~ Bilstein Shocks ~ Safe-T-Plus Stabilizer Arm ~ Bug Deflector ~ Deluxe Wheel Covers

PLEASE NOTE:

All **PLEASURE-WAY** motorhomes in Canada are C.S.A. Certified, and may exceed the approved installation criteria.

All motorhomes in the United States bear the R.V.I.A. seal of approval, and may exceed the individual state requirements.

Because of our policy of continuous improvements **PLEASURE-WAY** reserves the right to make product changes at any time without prior notice and without incurring obligations.

Some motorhomes depicted in this brochure may be shown with optional equipment. Some limitations may apply when deleting or adding certain options. Please see your dealer for additional information or contact **PLEASURE-WAY INDUSTRIES LTD.**

WARRANTY

1997 Chrysler Warranty

Basic warranty coverage 3 years or 60,000 km* in the United States it would read 3 years 36,000 miles*
This covers all factory installed parts except tires, wiper blades, brakes (rotors, pads linings, drums) and clutch discs. Tires are covered by the tire manufacturer, and the other excluded parts are covered for 1 year or 20,000 km* / 12,000 miles*.

Roadside Assistance for 3 years or 60,000 km*/36,000 miles*

A 24 hour toll free telephone number puts towing, fuel delivery, lockout assistance, tire changes and jump-starting at your fingertips from any location in Canada or the U.S.

Corrosion coverage for 7 years or 160,000 km* /100,000 miles*

All body sheet metal panels are covered against rust-through for 3 years, regardless of how far you drive, and outer body panels are covered for 7 years or 160,000 km* / 100,000 miles*.

* Whichever comes first

PLEASURE-WAY Van Motorhomes offer a 3 year or 36,000 mile/60,000 Km limited warranty covering all craftsmanship entailed in the manufacturing of the motorhome only. This does not include the chassis or appliances.

All appliances are covered by individual warranties offered by their respective manufacturers.

Pleasure-Way

302 Portage Ave.,
Saskatoon, Saskatchewan S7J 4C6
Tel: (306) 934-6578 Fax: (306) 934-7085



AUTHORIZED DEALER