



**Minnie Winnie**  
A Class C motor home with Class A attitude.





27P-Blue Danube

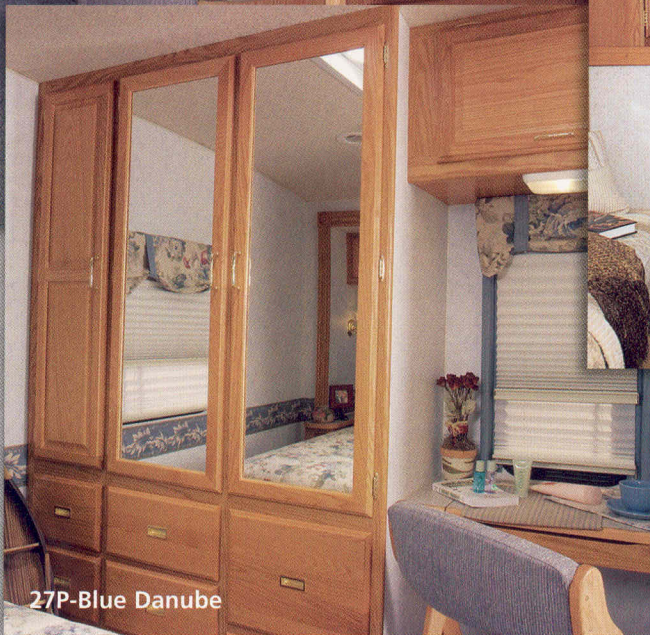


#### Stretch out.

The Minnie Winnie's big, comfortable interior can get even bigger thanks to the hydraulically powered front slideroom.

Stitchcraft custom furniture, pleated shades and custom interior lighting add coziness and enhance privacy. Thermostat-controlled, floor-ducted heating and ceiling-ducted air conditioning deliver consistent climate control.

The available roof air heat pump takes the chill off cool mornings without turning on the furnace.



27P-Blue Danube

#### A wonderful place to retire.

Minnie Winnie's 27P bedroom slideout area has a large wardrobe with spacious drawers and closet space, plus a desk/vanity with even more storage. For long-lasting beauty, the doors and drawers feature a catalyzed finish typically found in the cabinetry of finer homes. The queen-size bed has a Serta® mattress and lifts up easily to access another storage area below.



#### A theater on wheels.

The standard front entertainment center features convenient storage and a 25" TV with video selection system. Enjoy movies, music and TV even more with the Deluxe Entertainment System (shown). It includes a QSurround™ 5.1 sound amplifier system, a 27" stereo TV and stereo VCR or available DVD. Select the available 130-watt inverter, which provides 110-volt AC power to the TV and VCR when shoreline or generator power is not available.

#### Convenience of a Class C, the comfort of a Class A.

Our finest Class C motor home comes with design features and amenities you normally find in a Class A motor home. Combined with its Class C drivability and value, the Minnie Winnie is the total package.

Its impressive list of standard features includes a new one-piece radius-style fiberglass roof, plus single and dual slideout rooms that give you the kind of living space you'd expect to find only in a much larger Class A motor home, while providing abundant storage both inside and out.

Minnie Winnie comes in a variety of floorplans and is loaded with features such as a fully stocked entertainment center, roomy galley, BenchMark™ dinette... the list goes on and on. With all that Minnie Winnie has to offer, you're sure to find one that's perfect for you.





#### Driver friendly.

The well-designed cockpit has controls positioned for maximum driver comfort and convenience and can be enhanced with the available woodgrain dash applique. All gauges, switches and controls are full-sized and easy to reach—including standard power windows and door locks. In the center console, there's a handy storage tray, a coin holder, oversized cupholders and a large tip-out storage compartment. Driver and passenger-side airbags are standard.



#### Cook up a storm.

Prepare great meals or snacks with ease in Minnie Winnie's full-featured galley. Note that it comes complete with three-burner Amana® range/oven; a built-in 24" microwave over the range; and a molded, recessed, composite sink that's stain resistant and easy to clean. The sink covers and a flip-up countertop extension provide additional work space. Doors and drawers open easily with large handles, while positive catches help keep them secure.



#### The key to it all.

Minnie Winnie makes use of the KeyOne™ System. Just one key opens most vehicle doors, including compartment doors. What could be simpler?



#### Rain, rain go away.

Minnie Winnie's innovative awning rail, which has a built-in rain gutter, channels the water to the front and rear of the coach. This helps keep you dry and so does the available vinyl patio awning.\*



#### Sit back, relax.

The hoop-base lounge chair is a comfy swivel glider. Best of all, it can be positioned in your favorite spot when you're not traveling.



#### A bigger picture.

Minnie Winnie's exterior mirrors feature a large field of vision—so important when parking or changing lanes. The electric remote feature makes adjustments easy and includes a defrost function, too.



#### This radio's a "wow."

Our engineers worked closely with the radio manufacturer to create the RV Radio designed specifically for RV use. It includes an AM/FM stereo cassette/CD player with a built-in weather band for immediate weather updates at the touch of a button. Its large control knobs and buttons are easy to operate.



#### Bring the party outside.

Minnie Winnie can be equipped with the available exterior entertainment center that includes AM/FM stereo with antenna, a cassette or CD player, 12-volt DC receptacle, TV jack, 110-volt outlet, speakers and a removable table.



#### A clear rearview.

For added safety when backing up, select the available rearview monitor system. It includes a 6" screen mounted between the visors on an adjustable swivel base. The system also includes one-way audio.



#### More power to you.

And more efficiency, too, thanks to this available, high-quality Onan® MicroQuiet™ generator. It supplies 4,000 watts of power to Minnie Winnie's 110-volt wiring system. An automatic change-over switch means no more fumbling with plug-ins to enjoy generator power.



#### StoreMore. A lot more.

Extend your storage space and your living space with Winnebago Industries' exclusive StoreMore slideout system. The 27P and 31C feature front exterior storage compartments that extend along with the slideout to make loading and unloading easier anytime. There's plenty of room here for oversized or odd-shaped items.



#### Bed and breakfast.

The newly designed BenchMark full comfort dinette is a Winnebago Industries exclusive and features an innerspring cushioned seat to provide you with the feel and comfort of residential furniture. Flip up the seats to access the large storage space or fold down the table to quickly convert the dinette into a comfy bed.

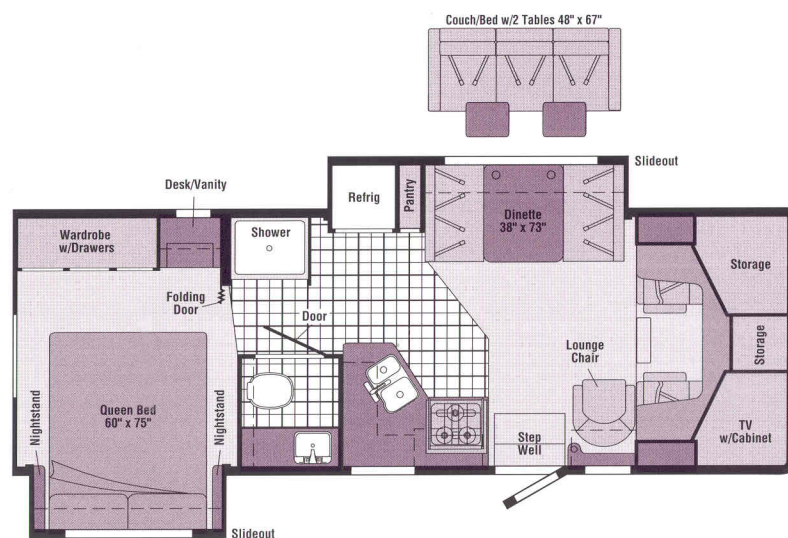




## The outside story.

Minnie Winnie's one-piece fiberglass sidewall is amazingly tough—typical for Winnebago Industries' design. Fiberglass running boards are a standard Minnie Winnie feature and help keep the sidewalls clean. Also available: rear auxiliary air springs, to improve the quality of your ride, and stainless steel wheel liners, to resist corrosion over the long haul.

## FLOORPLANS

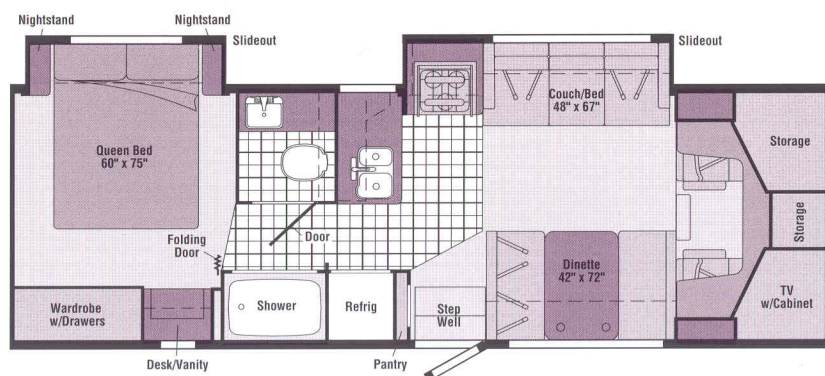


## 27P

- Refrigerator/dinette **STOREMORE** slideout system
- Rear bedroom slideout with large wardrobe and desk/vanity area
- Movable swivel/glider hoop-base lounge chair
- Front overhead cabinet with TV and storage



Beige Marble



## 30V

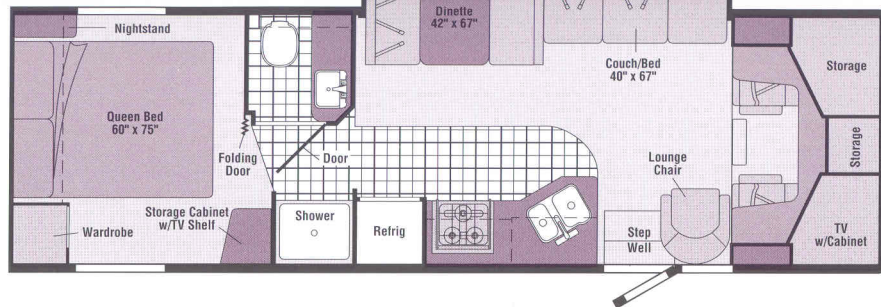
- New couch/range slide
- Rear bedroom slideout with large wardrobe and desk/vanity area
- Large L-shaped galley
- Front overhead cabinet with TV and storage



## Blue Danube







Vinyl Floorcovering



Seat Belts

Note: Dimensions shown are for sleeping space only and may vary due to styling differences. Dashed lines denote overhead storage areas.

31C

- Dinette/couch **STOREMORE** slideout system
- Front overhead cabinet with TV and storage
- Split bath with private shower



Cotswald Green

## EXTERIORS



Sand Metallic



Wild Orchid Metallic



Concert Cherry Woodgrain



Portsmouth Oak Woodgrain

DuPont Imron® FlexShield™ base-coat/clearcoat is a low-maintenance, high-gloss finish with maximum durability and chip resistance.



# 2003 Winnebago Minnie Winnie® Specifications

	27P	30V	31C
Length	27'11"	30'2"	31'4"
Exterior Height w/A/C*	11'7"	11'8"	11'5"
Exterior Width <sup>Δ</sup>	8'5.5"	8'5.5"	8'5.5"
Exterior Storage <sup>‡</sup> (cu. ft.)	40	78 <sup>§</sup>	73.6
Interior Height	6'8"	6'8"	6'8"
Interior Width	8'	8'	8'
Fresh Water Capacity w/Heater* (gal.)	36	41	41
Holding Tank Capacity - Black/Gray (gal.)	42/35	35/38	35/38
LP Capacity <sup>◇</sup> (gal.)	18	18	18
Fuel Capacity (gal.)	55	55	55
GCWR (lbs.)	20,000	20,000	20,000
GVWR (lbs.)	14,050	14,050	14,050
GAWR - Front (lbs.)	4,600	4,600	4,600
GAWR - Rear (lbs.)	9,450	9,450	9,450
Wheelbase	190"	205"	219"

Standard - S Optional - O

## AUTOMOTIVE/CHASSIS

	27P	30V	31C
<b>Chassis</b> - Ford® E450 Super-Duty, 6.8L V10 SOHC Triton® engine, 306-hp, automatic 4-speed overdrive transmission, 4-wheel anti-lock disc brakes, 130-amp. alternator, dual airbags	S	S	S
<b>Tire spare, Tire Tool</b> wrench, <b>Trailer Hitch</b> □ 3,500-lbs. drawbar/350-lbs. maximum vertical tongue weight & wiring,	S	S	S
<b>Wheelcovers</b>			
<b>Air Springs</b> auxiliary rear	O	O	O
<b>Wheel Liners</b> stainless steel	O	O	O

## CAB AREA & DRIVER CONVENIENCES

<b>Beverage Holder, Cab Seats</b> (fabric) w/3-point adjustable seat belts, armrest, lumbar support, multi-adjustable slide/recline, <b>Cigarette Lighter/12-Volt Powerpoint, Cruise Control, Curtain</b> cab divider, <b>Domelights, Floor Mats</b> (rubber) driver & passenger, <b>Power Door Locks, Power Cab Windows, Steering Wheel</b> tilt w/power assist, <b>Sunvisors (2), Trim Panels</b> driver & passenger doors (chassis supplied) w/map pocket	S	S	S
<b>Cab Seats</b> leather insert w/vinyl surround	O	O	O
<b>Instrument Panel</b> woodgrain appliqué	O	O	O
<b>Monitor System</b> rearview w/single camera & 1-way audio, Audiovox®	O	O	O

## ENTERTAINMENT

 <b>(Cab)</b> AM/FM stereo cassette/CD player w/weather band, speakers (4), <b>Satellite System Ready, Telephone</b> input & interior jack, <b>TV 25" Color AC*</b> w/remote, video selection system, <b>TV Enhancement Package</b> antenna (amplified), 12-volt powerpoint(s), interior jack(s), coax wiring, cable input	S	S	S
<b>DVD*</b> player w/remote	O	O	O

## BATH

	27P	30V	31C
<b>Cabinet</b> lavatory, <b>Cabinet</b> medicine, <b>Faucet</b> (lavatory) dual-control, <b>Faucet</b> (shower) dual-control w/flexible showerhead, <b>Light</b> shower, <b>Makeup Lights, Magazine Rack, Mirror</b> w/frame, <b>Shower</b> w/removable clothes rod, <b>Shower Door</b> textured glass, <b>Shower Skylight, Sink</b> rectangular, <b>Tissue Holder, Toilet</b> w/foot-pedal flush, <b>Towel Bar, Towel Rack</b> 3-rod, mounted to door	S	S	S
<b>Towel Ring</b>	S	S	

## BEDROOM

<b>Bed</b> queen, innerspring, w/underbed storage, bedspread, pillow shams, throw pillow, <b>Lights</b> decorative wall lamp(s), <b>Lights</b> reading, <b>Wall Border, Wardrobe</b> w/drawers & mirrored door(s) (door-activated light on 27P & 30V), <b>Nightstand(s)</b>	S	S	S
<b>Headboard</b>			S
<b>Shirt Closet</b> w/2 drawers			S
<b>Vanity Cabinet</b> w/flip-up countertop, mirror & folding chair	S	S	

## EXTERIOR

<b>Awning Rails</b> w/rain gutters, <b>Door</b> entrance w/separate screen door, deadbolt lock, <b>Entrance Door Steps</b> double, electric w/door-jamb switch, <b>Graphics Package</b> Wild Orchid Metallic or Sand Metallic (suggested with Blue Danube interior decor), <b>Ladder, Lights</b> porch light w/interior switch, <b>Mirrors</b> plate mount, electric remote w/defrost, <b>Mudflaps</b> rear, <b>Receptacle</b> AC duplex, <b>Running Boards</b> fiberglass, <b>Sidewall Skin</b> one-piece smooth fiberglass, <b>Storage Compartments</b> valance panels, trunk liner, gas cylinders, TriMark® KeyOne System, paddle latch, lights	S	S	S
<b>Awning*</b> patio	O	O	O



<b>Entertainment Center (Exterior) AM/FM Radio w/Cassette or CD Player</b> DC receptacle, AC duplex receptacle, AM/FM radio, TV jack, radio antenna, speakers (2), lockable compartment, removable table	O	O	O
<b>Satellite Dish Antenna</b> RV digital, elevation sensing unit	O	O	O
<b>Entertainment System* Deluxe, w/5 Channel QSurround Sound</b> TV 27" stereo color AC, stereo VCR, amplifier, cube speakers (5), sub-woofer, video selection system	O	O	O
<b>VCR</b> w/remote*	O	O	O

## INTERIOR

<b>Ceiling</b> fabric, <b>Clock</b> , <b>Cupholder(s)</b> , <b>Lights</b> ceiling, incandescent w/wall switches, <b>Light</b> halogen (over front TV cabinet), <b>Lights</b> reading, <b>Powerpoint</b> 12-volt, <b>Shades</b> day/night pleated, (lounge, dinette, bedroom), mini blinds (galley)	S	S	S
<b>Mirror</b> wall			S
<b>Picture</b>		S	S
<b>Windows</b> dual-pane/thermo-insulated	O		O

## CABINETRY

<b>Woodgrain</b> Portsmouth Oak stile-and-rail construction w/raised panel inserts on upper doors	S	S	S
<b>Woodgrain</b> Concert Cherry stile-and-rail construction w/raised panel inserts on upper doors	O	O	O

## COUNTERTOPS

<b>Laminate</b> w/T-mold edge	S	S	S
-------------------------------	---	---	---

## FLOORCOVERING

<b>Carpeting</b> w/pad, <b>Vinyl</b> bath & galley	S	S	S
--	---	---	---

## FURNITURE

<b>Dinette</b> access to storage below	S	S	S
<b>Chair</b> lounge, hoop-base (swivel/glider) (must be secure when traveling)	S		S
<b>Couch</b> w/throw pillow		S	S
<b>Couch</b> w/2 tables & throw pillow	O		

## GALLEY

<b>Countertop</b> flip-up extension, <b>Faucet</b> single-control, <b>Microwave Oven w/Range Fan, Range*</b> sealed three-burner w/oven, Amana, <b>Refrigerator/Freezer</b> large double-door, Norcold®, <b>Sink</b> double-bowl molded w/sink covers, <b>Wall Border</b>	S	S	S
<b>Pantry</b>	S	S	
<b>Partition</b> glass, end of galley		S	
<b>Coffemaker</b> Krups®	O	O	O
<b>Water Purification</b> w/separate faucet	O	O	O

## SYSTEMS

<b>Air Conditioner (Roof)</b> 14,800 BTU, ceiling-ducted w/wall thermostat, <b>Auxiliary Start Circuit, Batteries (Coach) (2)</b> deep-cycle, group 24, <b>Battery (Coach)</b> disconnect system, <b>Battery Charge Control</b> automatic dual, <b>Drain</b> water tank, <b>Electrical Distribution System</b> AC & DC breaker panels, 45-amp. converter/charger, <b>Furnace</b> 30,000 BTU, low profile, <b>Generator/Shoreline Automatic Changeover Switch, Generator Prep Kit, Monitor Panel</b> battery condition gauge, generator hourmeter gauge*, generator start/stop switch*, holding tank levels, LP tank level, water heater light(s), water heater switch, water pump switch, water tank level, <b>Holding Tank Flushing System</b> black tank only, <b>Power Cord</b> 30-amp. 25', <b>Roof Vent*</b> nonpowered, lounge, bedroom, <b>Roof Vent</b> powered, bath, <b>Service Center (Drainage/Water)</b> city water hookup/tank diverter fill, drainage valves, exterior wash station w/pump switch, 10' sewer hose, air spring chucks*, <b>Service Center (Electrical)</b> cable input, power cord, telephone input, <b>Tank</b> holding, heated compartment, <b>Tank</b> LP, permanent mount w/gauge, <b>Water Heater</b> 6 gal. electronic ignition, LP gas, <b>Water Heater Winterization Bypass Valve</b> manual, <b>Water Hookup</b> city, <b>Water Pump</b> demand, <b>Water System Winterizing Valve</b> manual, <b>Water Tank Fill</b> gravity, w/locking door	S	S	S
<b>Generator*</b> 4,000 watt, Onan MicroQuiet, gas	O	O	O
<b>Home Comfort Plus Package*</b> roof A/C heat pump, auxiliary automotive heater, nonpowered insulated roof vent (bedroom), powered insulated ventilator fans (lounge, bath)	O	O	O
<b>Inverter</b> DC/AC, 130 watt	O	O	O
<b>Roof Vent</b> powered ventilator fan*, lounge	O	O	O
<b>Solar Panel*</b> 10 watt w/battery charger	O	O	O
<b>Water Heater</b> 6 gal. electronic ignition, 120 vac/LP gas w/Motoraid, includes energy management system	O	O	O

## SLIDEOUT

<b>Slideout Room</b> dinette/pantry/refrigerator w/slidoorm cover, <b>STOREMORE</b> , <b>Slideout Room</b> bed w/slidoorm cover	S		
<b>Slideout Room</b> couch/range w/slidoorm cover, <b>Slideout Room</b> bed w/slidoorm cover		S	
<b>Slideout Room</b> couch/dinette w/slidoorm cover, <b>STOREMORE</b>			S

## SAFETY

<b>Airbags</b> driver & passenger, <b>Assist Bar</b> interior, <b>Assist Handle</b> exterior, <b>Bumpers</b> front & rear, <b>Detectors/Alarms</b> LP leak, smoke, carbon monoxide, <b>Fire Extinguisher</b> 10 B.C., <b>Ground Fault Interrupter, Light</b> center high-mount brake lamp, <b>Light(s)</b> courtesy w/wall switch(es), <b>Seat Belts</b> cab, 3-point, <b>Seat Belts</b> lap (in selected areas), <b>Window</b> escape	S	S	S
--	---	---	---

## WARRANTY

<b>12-month/15,000-mile basic limited warranty,</b>	S	S	S
<b>36-month/36,000-mile warranty on structure,**</b>			
<b>10-year limited parts &amp; labor warranty on roof skin</b>			

- The height of each model is based on the curb weight of a typically equipped unit on the standard chassis. The actual height of your vehicle may vary by as much as 2" depending on chassis or equipment variations.
- Δ Minnie Winnie floorplans feature a wide-body design — over 96". In making your purchase decision, you should be aware that some states restrict access on some or all state roads to 96" in body width. Before making your purchase decision, you should confirm the road usage laws in the states of interest to you. \* Not all items available in combination. See dealer for details.
- ◊ Capacities shown are tank manufacturer's listed water capacity (W.C.). Actual filled LP capacity is 80% of listing due to overfilling prevention device on tank. \*\*See your dealer for complete warranty information.
- ‡ Your motor home's load capacity is designated by weight, not by volume, so you cannot necessarily use all available space when loading your motor home.
- § Measurements are based on the most recent information available. See your dealer for updated specifications.
- Actual towing capacity is dependent on your particular loading and towing circumstances, which includes the GVWR, GAWR and GCWR as well as adequate trailer brakes. Please refer to your vehicle's operator's manual for further towing information.
- Winnebago Industries' continuing program of product improvement makes specifications, equipment, model availability and prices subject to change without notice. Comparisons to other motor homes are based on the most recent information available.



## Not all motor homes are created equal.

As you take a closer look, you'll see that there is much more to the Winnebago Minnie Winnie than a long list of standard features and compelling floorplans. Beneath it all you'll find a SuperStructure™ foundation of strength and durability, and Winnebago Industries' recognized service and warranty support.



### We are committed to service.

We back our motor homes with the best after-the-sale service in the industry.

- 12-month/15,000-mile basic limited warranty
- 36-month/36,000-mile warranty on structure
- Standard 10-year limited parts-and-labor roof skin warranty
- Complimentary 24-hour Roadside Assistance Program
- TripSaver Fast Track Parts. TripSaver guarantees that in-stock warranty parts ship directly to your dealer within 24 hours
- Nationwide Dealer service network



### Certified quality.

Recreation Vehicle Dealer Association members annually rate RV manufacturers on the quality of their products, and on their sales and service support. Winnebago Industries has achieved the coveted Quality Circle Award every year since its inception, the only major motor home manufacturer to do so.



### Learn more about what sets Winnebago Industries apart.

Ask your dealer for this guide. It will help you learn what makes Winnebago Industries motor homes distinctly superior to other brands.

### Warning: Joining WIT has been known to cause excessive fun.

Winnebago-Itasca Travelers (WIT) is a club for owners of Winnebago Industries motor homes. WIT is a great way to meet people and offers you:

- Caravans and rallies
- Local and state group activities
- Benefits for RVers



©2002 Winnebago Industries, Inc., Forest City, IA 50436. Printed in USA.

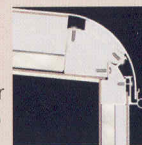
**Seat belts are your most important hookup. Always buckle up.**  
Visit us at [www.winnebagoind.com](http://www.winnebagoind.com)



is the term given to Winnebago Industries' structural motor home design and construction. Rather than a single component, it is the culmination of design integration that incorporates steel and aluminum substructures, composite design laminated floor risers, interlocking joint technology, and Thermo-Panel® floor, roof and side-walls to form a high-strength, durable vehicle body.

### Interlocking joint construction

Utilizes advanced extruded aluminum structural components to create integrated floor-to-side-wall, and sidewall-to-roof joints. This design effectively distributes the weight of the walls and roof, making a stronger and more durable body than competitor designs that rely on screws to carry the weight.

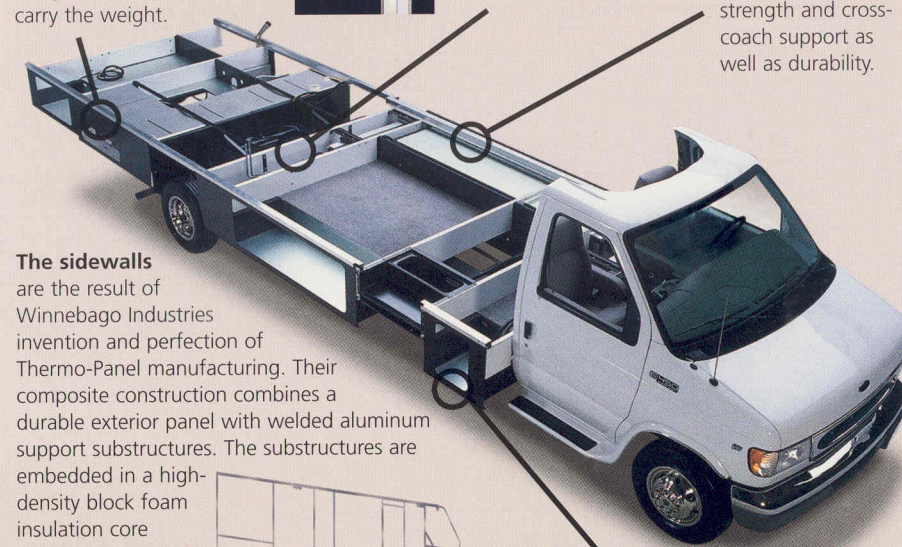


### Laminated risers

feature a welded aluminum core for superior strength and provide a stable base for the floor structure and storage compartments.

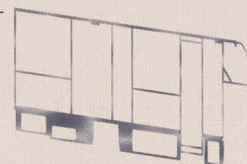
### The foundation substructure

assembly is precision-aligned to maximize strength and cross-coach support as well as durability.



### The sidewalls

are the result of Winnebago Industries invention and perfection of Thermo-Panel manufacturing. Their composite construction combines a durable exterior panel with welded aluminum support substructures. The substructures are embedded in a high-density block foam insulation core to create a strong, durable, yet light-weight sidewall.



**Critical steel components** are treated using an advanced electrodeposition coating process that provides superior corrosion protection.



One-year-old competitor's rubber roof



One-year-old Winnebago Industries fiberglass roof

### Built to a higher standard.

The Minnie Winnie features a crowned, one-piece fiberglass roof backed with a 10-year limited parts-and-labor roof skin warranty. Fiberglass offers superior strength, attractiveness and durability over rubber roofs found on many competitive models. Over time, rubber roofs are susceptible to chalking, streaking and degradation, and have less puncture and tear resistance than fiberglass.