



Serial #: 1SABU0AK6S7B35133  
Model: 188BHS AUTUMN RIDGE TT



Model Year: 2025    Dealer Name: D&D RV CENTER, LLC  
806 STANLEY  
HELENA, MT 59601  
USA

Standard Equipment

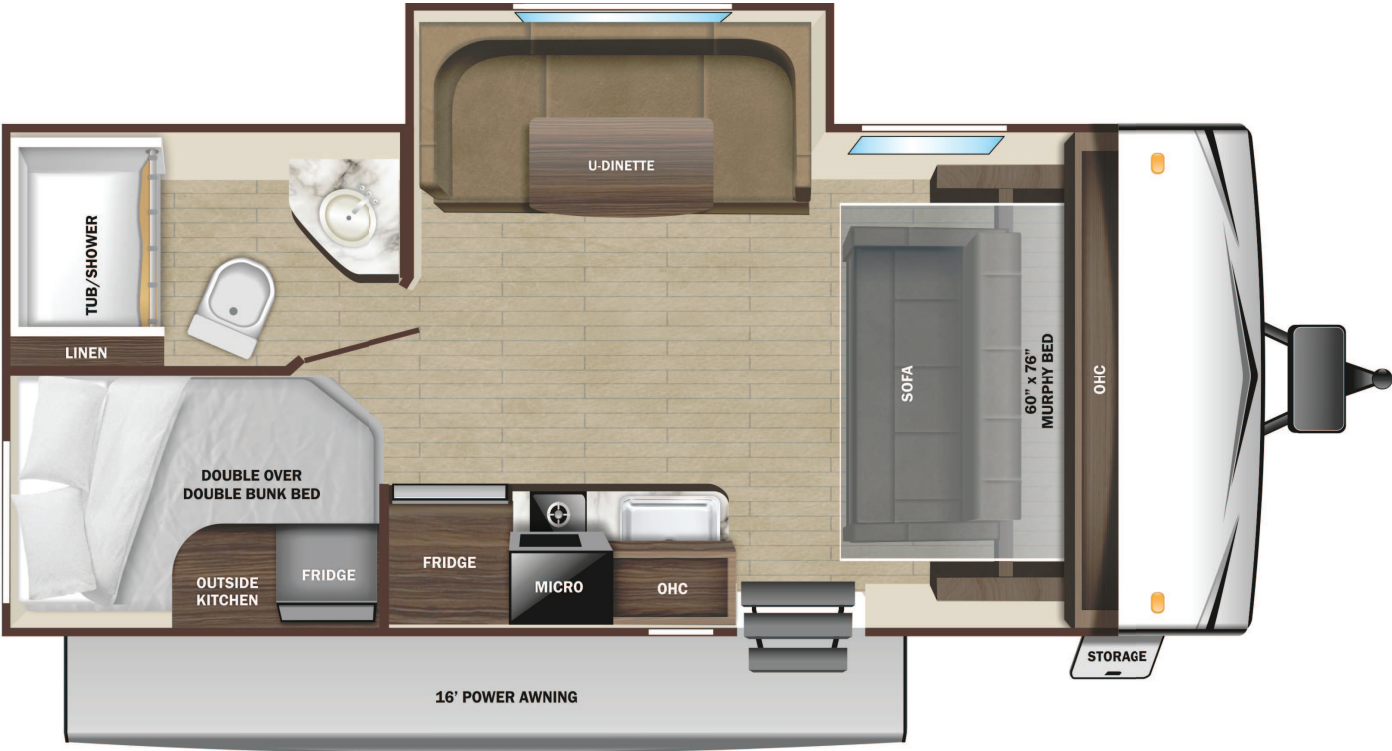
Optional Equipment

THE FOLLOWING ITEMS ARE STANDARD ON THIS MODEL      OPTIONAL EQUIPMENT INSTALLED ON THIS VEHICLE BY MANUFACTURER

EXTERIOR <ul style="list-style-type: none"><li>- 120 GFCI protected receptacle</li><li>- 5/8" main floor decking</li><li>- 96" exterior width</li><li>- Black front diamond plate protection</li><li>- Detachable power cords</li><li>- Exterior docking center (dual axle models)</li><li>- Fiberglass insulation</li><li>- Flexible LP lines</li><li>- Galvanized wheel wells</li><li>- Grab handle</li><li>- In-frame battery rack</li><li>- Magnetic baggage door catches</li><li>- Magnum Roof™ system</li><li>- PVC roofing membrane (limited lifetime warranty)</li><li>- Rain guttering with molded drip spouts</li><li>- Rear camera prep</li><li>- Safety bumper with drain hose carrier and end caps</li><li>- Self-adjusting electric brakes and E-Z Lube® axles</li><li>- Thermal Seal- enclosed, insulated, and heated underbelly and fully insulated roof with a PVC roofing membrane (dual axle models)</li><li>- Tinted safety-glass windows throughout</li></ul>	INTERIOR <ul style="list-style-type: none"><li>- 75 lb. ball bearing drawer guides</li><li>- 81" interior height</li><li>- Ceiling mount bluetooth® speaker</li><li>- Flush floor slides with residential vinyl flooring (select models)</li><li>- Foot flush toilet</li><li>- Hidden hinge cabinet door hinges</li><li>- LED interior lighting</li><li>- Magnet cabinet catches</li><li>- Pleated blackout night shades</li><li>- Pocket-screwed lumbercore cabinet construction</li><li>- Pressed membrane kitchen countertops</li><li>- Range hood</li><li>- Residential high-rise kitchen faucet</li><li>- Single basin under-mount kitchen sink</li><li>- Solid hardwood cabinet doors</li><li>- Solid hardwood drawer fronts</li><li>- Storage below main bed</li><li>- USB charging port at beds and bunks</li></ul> CUSTOMER CONVENIENCE PACKAGE (Mandatory) <ul style="list-style-type: none"><li>- 13,500 BTU roof mounted A/C</li><li>- 17" oven (dual axle models)</li><li>- 2-burner range with glass cover (single axle models)</li><li>- 3-burner range with glass cover (dual axle models)</li><li>- Dome style digital TV antenna</li><li>- Friction hinge entrance door with window and shade prep</li><li>- Gas/electric water heater</li><li>- Microwave</li><li>- Nitrogen filled radial tires</li><li>- Powered awning with LED lighting</li><li>- Powered bathroom vent</li><li>- Residential vinyl flooring throughout</li><li>- Solid swing down step (main)</li><li>- Stabilizer jacks (4-dual axle models, 2-single axle models)</li><li>- Water heater bypass</li><li>- Xtend Solar I Package (200 watt solar panel with 30 amp controller)</li></ul>	Base price27,668.00 USA STANDARDSn/c CUSTOMER CONVENIENCE PACKAGE3,743.00 MOAB PACKAGE863.00 FIBERGLASS SIDEWALL818.00 SPARE TIRE & CARRIER-MOAB413.00 UPGRADED FRESH WATER TANKn/c
		UNIT TOTAL33,505.00
		DEALER INSTALLED OPTIONS

Manufacturer’s Suggested Retail Price \$33,505.00

TOTAL AMOUNT DOES NOT INCLUDE STATE AND LOCAL TAXES OR LICENSE FEES. THE PRICE SHOWN ABOVE MAY OR MAY NOT BE REPRESENTATIVE OF THE ACTUAL SELLING PRICE OF SIMILAR RECREATIONAL VEHICLES IN YOUR AREA.



**UVW**  
4702 lbs

**Sleeps**

**Length**  
23' 9.75"

<b>DIMENSIONS</b>	<b>CAPACITIES</b>
Exterior height:.....125.75"	Fresh water tank (gals.):...42.00
Exterior width:.....96.00"	Gray water tank (gals.):...40.00
<b>WEIGHTS</b>	Black water/toilet tank (gals.):.....40.00
GVWR:.....5675	Propane (lbs.):.....10
GAWR (front):.....5145	Propane (gals.):.....2
GAWR (rear):.....0	Water heater (gals.):.....6.00
Approx. Gross Cargo Carrying Capacity(GCCC):.....973	<b>SEATING &amp; SLEEPING</b>
<b>TIRES</b>	
Tire size (front):.....ST235/75R15D	
Tire size (mid):.....	
Tire size (rear):.....	

\*\*\*Some dimensions may be rounded and may vary from the acutal dimensions\*\*\*  
\*\*\*Weights may be estimated calculations and may vary from the actual weight - refer to the vehicle weight labels for actual weights\*\*\*  
Floorplans, features and specifications are subject to change without notice.

