

# REAL-LITE

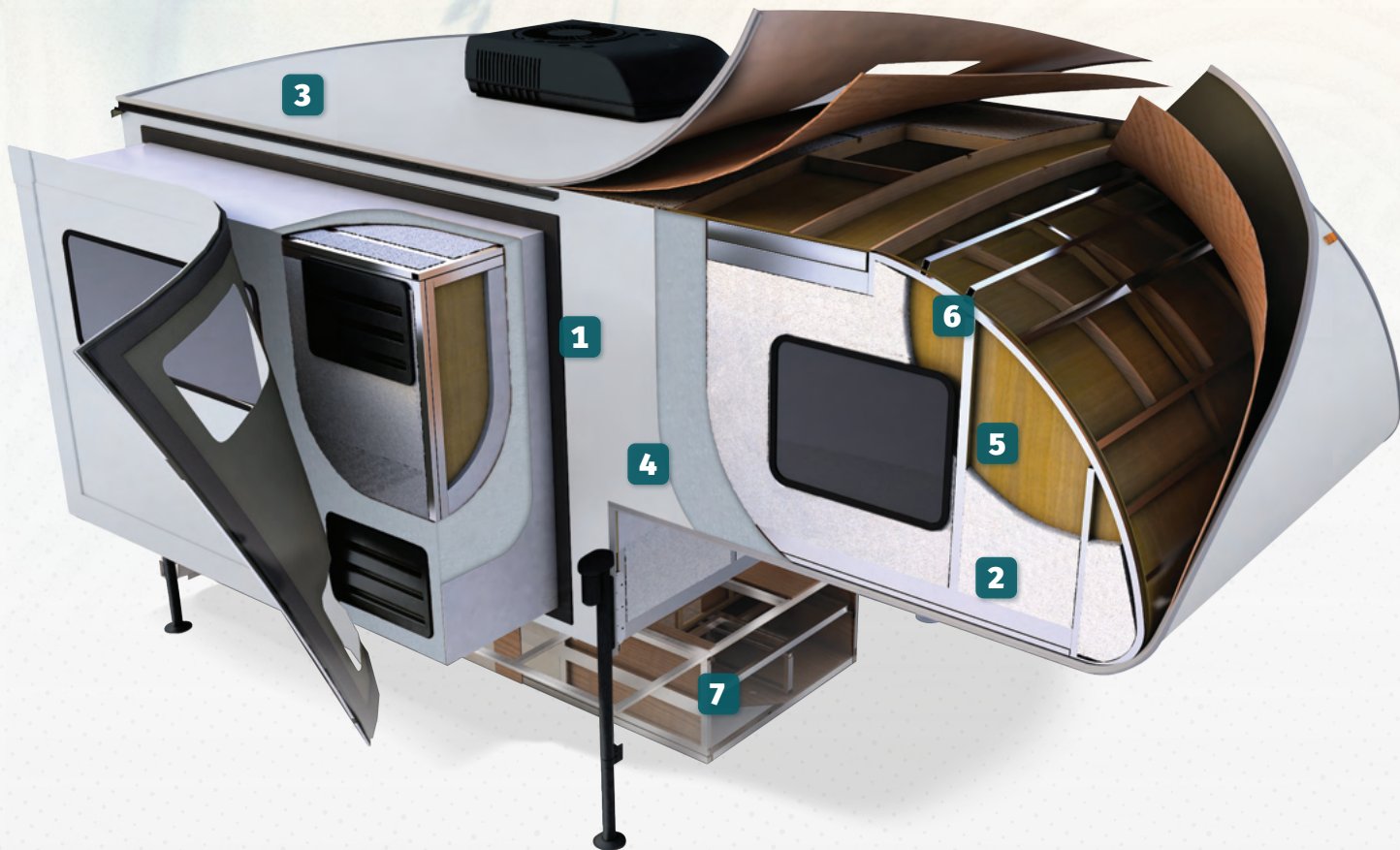
TRUCK CAMPERS

EXPLORE  
THE  
GREAT  
OUTDOORS



FOREST RIVER

FORESTRIVERINC.COM



## REAL-LITE CONSTRUCTION

All Palomino truck campers are aluminum framed with laminated construction to offer a light weight yet durable product at an affordable price.

- 1** White or Gray Gel Coat Exterior
- 2** High Density Block Foam Insulation
- 3** Alpha Super Flex Membrane Roof
- 4** Azdel Substrate
- 5** Azdel Wall Board
- 6** Framing: Fully Welded Aluminum Super Structure
- 7** Heated Insulated basement (*Max Series Only*)



# REAL-LITE STANDARDS & OPTIONS

## SOFT SIDE FEATURES

- 200 Watt Solar Panels (2)
- 100 Amp Lithium Battery
- Carbon Monoxide Detector
- Maxx Air Vent
- 20,000 BTU Furnace
- 3.3 cu ft 12V Refrigerator
- Pre-Wired for Electric Jacks
- Convertible Jacks
- Electric Roof Lift
- Bluetooth® Charge Controller, DC/DC Connector, and Battery Monitor
- LED Interior Lighting
- Roof Ladder Bracket
- Hi Gloss Fiberglass Exterior
- Lift Remote
- Built With Azdel Construction
- Broad Maple Cabinets

## SOFT SIDE OPTIONS

- 2nd 100 Amp Lithium Battery
- 11,000 BTU Air Conditioner
- AM/FM, iPod, Bluetooth® Stereo
- Dually Bracket
- Electric Jacks
- Entry Step (4)
- Hot Water/Outside Shower (1600/1604/1605/1609 Only; STD on 1608/1610)
- Rear Bumper w/LED Lights (1609/1608/1610 Only)
- 5' Box Awning (1604 Only)
- 7' Box Awning (1605/1609/1608/1610 Only)
- 9' x 12' Moon Shade Canopy
- Roof Rack
- Short Bed PKG (1609 Only)

## HARD SIDE FEATURES

- 200 Watt Solar Panels (2)
- 100 Amp Lithium Battery
- Carbon Monoxide Detector
- Maxx Air Vent
- On Demand Water Heater
- Outside Shower w/Hot & Cold Water
- LED Interior Lighting
- Frameless Windows
- Solar Prep
- Front Cap w/Line-X® Windshield
- Hi Gloss Exterior Fiberglass
- 20,000 BTU Furnace
- 12V Refrigerator (3.3 cu ft 1803; 11 cu ft 1806)
- Bluetooth® Charge Controller, DC/DC Connector, and Battery Monitor
- Roof Ladder Bracket
- Built w/Azdel Construction
- White Cabinets
- Electric Jacks

## HARD SIDE OPTIONS

- 2nd 100 Amp Lithium Battery
- 11,000 BTU Air Conditioner
- 22" LED TV 12 Volt
- Dually Bracket
- Entry Step (4)
- Euro Bunk (1806 Only)
- Microwave
- Rear Bumper (1806 Only)
- Rear Awning (1806 Only)
- Short Bed PKG (1806 Only)
- Side Awning w/LED Lights
- Solid Surface Countertops (1806 Only)
- Roof Rack

## ESSENTIAL PACKAGE (STD ON 1916 ONLY)

- Solid Surface Countertops
- Outside Kitchen/Ent. Center (32" TV, 3 cu ft Fridge)
- Sundek MORryde® StepAbove Entry Step

## DELUXE PACKAGE (STD ON 2110, 2114 ONLY)

- Two 32" TVs
- Rear Awning
- Side Awning

## HARD SIDE MAX FEATURES

- 200 Watt Solar Panels (2)
- 100 Amp Lithium Battery
- 22" STD HD TV
- AM/FM CD/DVD Player w/Theater Sound and Ext. Speakers
- Undermounted Sink
- Sink Cover/Cutting Board
- Carbon Monoxide Detector
- Maxx Air Vent
- Frameless Insulated Windows
- Electric Jacks
- On Demand Water Heater
- Hot/Cold Water Outside Shower
- LED Interior Lighting
- 12V Tank Heat Pads
- 11 cu ft 12V Refrigerator
- Heated, Enclosed Basement
- Front Cap w/Line-X® Windshield
- Hi Gloss Exterior Fiberglass
- Microwave
- Integrated Bumper
- 20,000 BTU Furnace
- Azdel Construction
- Roof Ladder Bracket
- Bluetooth® Charge Controller, DC/DC Connector, and Battery Monitor
- Rear Awning
- Solid Surface Countertops
- White Cabinets

## HARD SIDE MAX OPTIONS

- 2nd 100 Amp Lithium Battery
- 11,000 BTU Air Conditioner
- Dually Bracket
- Entry Step (4)
- Short Bed PKG (1910/1912 Only)
- Side Awning w/LED Lights
- Theater Seating (1912/1914/2114 Only)

## TRUCK BED COMPATIBILITY

### COMPACT TRUCK

Chevrolet® Colorado™/  
Toyota® Tacoma™

RL-1600: 5'-8' Bed



### 1/2 TON

F-150/1500

RL-1803: 5'6"-8' bed

R-780H: 5' 6"-8' Bed

RL-1609: 6' 6"-8' Bed

RL-1608: 6' 6" Bed

RL-1605: 6' 6"-8' Bed

RL-1604: 5'-8' Bed



### 3/4 TON

F-250/2500

RL-1910: 6' 6"-8' Bed

RL-1912: 6' 6"-8' Bed

RL-2110: 6' 6"-8' Bed

RL-1806: 6' 6"-8' Bed

RL-1610: 8' Bed



### 1 TON

F-350/3500

RL-1914: 8' Bed

RL-1916: 8' Bed

RL-2114: 8' Bed



# REAL-LITE POPULAR FEATURES

## A OPTIONAL ROOF RACK

Our Optional Roof Rack System Provides Numerous Options for You to Take Your Outdoor Toys Along with You When You Travel. They are Rated to Hold Up to 300 lb and Can Be Used with the Roof in the Upright Position.

*(Roof Rack N/A 1806, Max Models.)*

## B HANGING STORAGE

Our New Hanging Pantry Provides You with Almost 100% More Storage Than the Upper Cabinets They Replace! They are Also Portable so Loading and Unloading Them is Now so Much More Convenient. *(Soft-Side Only)*

## C STANDARD SOLAR PANEL

Two 200W Panels Help Keep Battery System Charged for Extended Adventures.

## D CHARGING PORT

Allows You to Charge or Maintain Your Onboard Battery with Ease from the Exterior of Your Palomino Camper.

## E SOLAR CHARGE CONTROLLER

Our Standard Solar Charge Controller Makes it Easy for You to Monitor Your Onboard Battery System.

## F MOON SHADE

A 9' x 12' Moon Shade Provides a Shaded Campsite Experience. *(Soft-Side Only)*

## G FIBERGLASS FRONT CAP

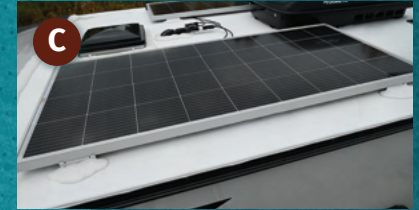
Our Fiberglass Front Cap Has a Fully Integrated Windshield. Palomino RV Partnered with the Leaders in O.E. Automotive Windshield Manufacturing Guardian Industries as Well as Dow Chemicals to Create This Palomino Exclusive Feature. This Automotive Style Windshield with a Durable Line-X® Coated Protection Not Only Looks Great Rolling Down the Road, But Also Creates an Open Inviting Environment in the Palomino Hard-Side Max Cabover Bunks While You Enjoy Great Panoramic Views.

*(Hard-Side/Hard-Side Max Only)*

## H EURO BUNK

The Palomino RV Euro Bunk is Easily Lowered Over the Dinette with the Touch of a Button to Allow for Additional Sleeping Area.

*(Only Available on RL-1806)*



# SOFT-SIDE



# HARD-SIDE



# HARD-SIDE MAX





### ROOF LIFT SYSTEM

Our Rieco-Titan 2.0 Electric Roof Lift System Has Been Extensively Tested to Provide Great Reliability and is Mounted on the Outside of the Unit for Ease of Maintenance and to Free Up Valuable Space Inside Your Camper.

**TRAVEL POSITION**



**CAMPING POSITION**

## REAL-LITE **SOFT-SIDE**

No matter the size of your truck, we have a Soft-Side truck camper perfect for you. Thanks to the electric lift you can easily set up your camper without hand-cranking the top up or down. The included remote provides functionality with the simple push of a button. Plus, our 55" one-piece door makes it that much easier to enter and exit the camper, compared to our competition's 46" or 47" door. The Soft-Side series comes in a white or gray gel coat exterior.

# RL-1600

DESIGNED FOR  
COMPACT TRUCKS



LENGTH: 12' 8" WIDTH: 6' 4" FLOOR LENGTH: 6' CLOSED HEIGHT: 6' INT. HEIGHT: 7'  
 UYW: 1216 LP GAS: 20 WHEEL WELL WIDTH: 40" CAB OVER BED: 66" x 75" DINETTE BED: 36" x 73"  
 CENTER OF GRAVITY: 22" FRESH: 8.5 GAL BLACK: N/A

# RL-1604

1/2 TON TRUCK  
5' TO 8' BED



LENGTH: 13' 5" WIDTH: 7' 2" FLOOR LENGTH: 7' CLOSED HEIGHT: 6' INT. HEIGHT: 7'  
 UYW: 1613 LP GAS: 20 WHEEL WELL WIDTH: 46 1/2" CAB OVER BED: 60" x 80" DINETTE BED: 36" x 90"  
 CENTER OF GRAVITY: 22" FRESH: 15 GAL BLACK: N/A

# RL-1605

1/2 TON TRUCK  
6' 6" TO 8' BED



LENGTH: 12' 10" WIDTH: 7' 2" FLOOR LENGTH: 8' CLOSED HEIGHT: 6' INT. HEIGHT: 7'  
 UYW: 1610 LP GAS: 20 WHEEL WELL WIDTH: 46 1/2" CAB OVER BED: 60" x 80" DINETTE BED: 36" x 72"  
 CENTER OF GRAVITY: 39" FRESH: 15 GAL BLACK: N/A

# RL-1609

1/2 TON TRUCK  
6' 6" TO 8' BED



LENGTH: 14' 10" WIDTH: 7' 2" FLOOR LENGTH: 8' 6" CLOSED HEIGHT: 6' INT. HEIGHT: 7'  
 UYW: 1895 LP GAS: 20 WHEEL WELL WIDTH: 46 1/2" CAB OVER BED: 60" x 80" DINETTE BED: 36" x 72"  
 CENTER OF GRAVITY: 37" FRESH: 15 GAL BLACK: 7 GAL

# RL-1608

1/2 TON TRUCK  
6' 6" BED



LENGTH: 14' 10" WIDTH: 7' 2" FLOOR LENGTH: 8' 6" CLOSED HEIGHT: 6' INT. HEIGHT: 7'  
 UYW: 1814 LP GAS: 20 WHEEL WELL WIDTH: 46 1/2" CAB OVER BED: 60" x 80" DINETTE BED: 36" x 72"  
 CENTER OF GRAVITY: 37" FRESH: 15 GAL BLACK: 7 GAL

# RL-1610

3/4 TON TRUCK  
8' BED



LENGTH: 14' 4" WIDTH: 7' 2" FLOOR LENGTH: 9' 6" CLOSED HEIGHT: 6' INT. HEIGHT: 7'  
 UYW: 1939 LP GAS: 30 WHEEL WELL WIDTH: 46 1/2" CAB OVER BED: 60" x 80" DINETTE BED: 36" x 72"  
 CENTER OF GRAVITY: 45" FRESH: 15 GAL BLACK: 7 GAL



1. Palomino strongly recommends you check your trucks owners manual or contact the manufacturer for your trucks capabilities.
2. The center of gravity measurement is as built. Your options and loading on the truck may adjust this measurement.



## REAL-LITE **HARD-SIDE**

Our lightweight, Hard-Side truck campers are packed with great features and keep a lighter payload, thanks to the fully aluminum welded frame. We've redesigned the interior to provide greater cabinet storage, and upgraded frameless windows. Our campers fit multiple truck sizes so check page 3 to find your favorite floorplan.



# R-780H O.V.E.



1/2 TON TRUCK 5' 6" TO 8' BED

LENGTH: 12' 9" WIDTH: 7' 2" FLOOR LENGTH: 6' 6" EXT. HEIGHT: 7' 11" INT. HEIGHT: 6' 6"

UWV: 1328 LP GAS: 20 WHEEL WELL WIDTH: 48" CAB OVER BED: 60" x 80" DINETTE BED: 36" x 75"

CENTER OF GRAVITY: 23" FRESH: 8 GAL GRAY: N/A BLACK: N/A

# RL-1803



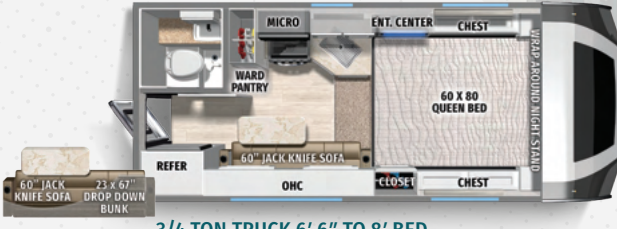
1/2 TON TRUCK 5' 6" TO 8' BED

LENGTH: 16' 5" WIDTH: 7' 2" FLOOR LENGTH: 8' 2" EXT. HEIGHT: 7' 11" INT. HEIGHT: 6' 6"

UWV: 1889 LP GAS: 20 WHEEL WELL WIDTH: 48" CAB OVER BED: 60" x 80" DINETTE BED: 32" x 60"

CENTER OF GRAVITY: 27" FRESH: 21 GAL GRAY: 8 GAL BLACK: 8 GAL

# RL-1806



3/4 TON TRUCK 6' 6" TO 8' BED

LENGTH: 18' WIDTH: 7' 8" FLOOR LENGTH: 9' EXT. HEIGHT: 8' 4" INT. HEIGHT: 6' 11"

UWV: 2489 LP GAS: 30 WHEEL WELL WIDTH: 48" CAB OVER BED: 60" x 80" DINETTE BED: 32" x 60"

CENTER OF GRAVITY: 42" FRESH: 21 GAL GRAY: 7 GAL BLACK: 8 GAL



1. Palomino strongly recommends you check your trucks owners manual or contact the manufacturer for your trucks capabilities.
2. The center of gravity measurement is as built. Your options and loading on the truck may adjust this measurement.

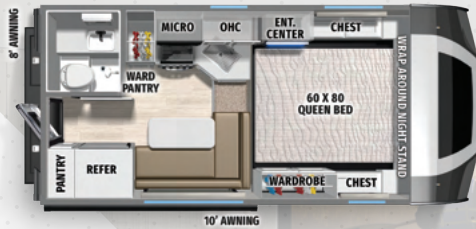


## REAL-LITE **HARD-SIDE MAX**

Our Hard-Side Max series is our premium product. With the insulated, frameless windows and heated basement, this camper is ready for adventure. Our exclusive front cap windshield opens the expansive living space with light and creates an inviting atmosphere.

# RL-1910

3/4 TON TRUCK  
6' 6" TO 8' BED



LENGTH: 18' 4" WIDTH: 8' 2" FLOOR LENGTH: 9' EXT. HEIGHT: 9' 9" INT. HEIGHT: 6' 8"

UWV: 3066 LP GAS: 30 WHEEL WELL WIDTH: 48" CAB OVER BED: 60" x 80" DINETTE BED: 24" x 63"

CENTER OF GRAVITY: 37" FRESH: 45 GAL GRAY: 20 GAL BLACK: 20 GAL

# RL-1912

3/4 TON TRUCK  
6' 6" TO 8' BED



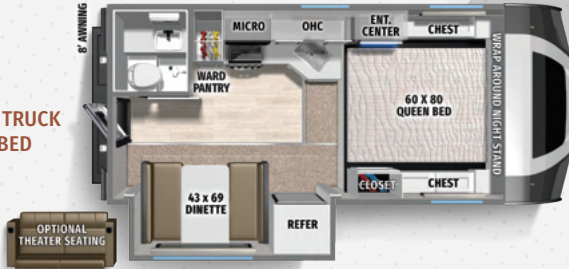
LENGTH: 18' 4" WIDTH: 8' 2" FLOOR LENGTH: 9' EXT. HEIGHT: 9' 9" INT. HEIGHT: 6' 8"

UWV: 3290 LP GAS: 30 WHEEL WELL WIDTH: 48" CAB OVER BED: 60" x 80" DINETTE BED: 42" x 58"

CENTER OF GRAVITY: 37" FRESH: 45 GAL GRAY: 20 GAL BLACK: 20 GAL

# RL-1914

1 TON TRUCK  
8' BED



LENGTH: 19' 3" WIDTH: 8' 2" FLOOR LENGTH: 10' EXT. HEIGHT: 9' 9" INT. HEIGHT: 6' 8"

UWV: 3522 LP GAS: 30 WHEEL WELL WIDTH: 48" CAB OVER BED: 60" x 80" DINETTE BED: 43" x 69"

CENTER OF GRAVITY: 46" FRESH: 45 GAL GRAY: 20 GAL BLACK: 20 GAL

# RL-1916

1 TON TRUCK 8' BED



LENGTH: 20' WIDTH: 8' 2" FLOOR LENGTH: 10' 8" EXT. HEIGHT: 9' 9" INT. HEIGHT: 6' 8"

UWV: 3599 LP GAS: 30 WHEEL WELL WIDTH: 48" CAB OVER BED: 60" x 80" DINETTE BED: 41" x 60"

CENTER OF GRAVITY: 53" FRESH: 45 GAL GRAY: 20 GAL BLACK: 20 GAL

# RL-2110

DRY  
BATH

3/4 TON TRUCK  
6' 6" TO 8' BED



LENGTH: 18' 8" WIDTH: 8' 2" FLOOR LENGTH: 9' EXT. HEIGHT: 9' 9" INT. HEIGHT: 6' 8"

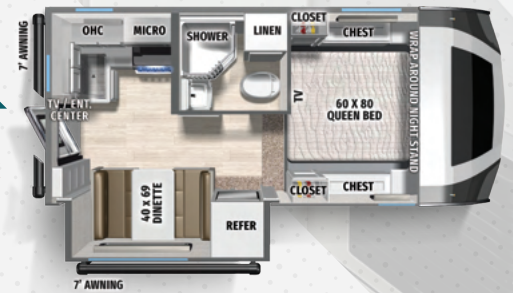
UWV: 3225 LP GAS: 30 WHEEL WELL WIDTH: 48" CAB OVER BED: 60" x 80" DINETTE BED: 40" x 56"

CENTER OF GRAVITY: 40 1/2" FRESH: 45 GAL GRAY: 20 GAL BLACK: 20 GAL

# RL-2114

DRY  
BATH

1 TON TRUCK  
8' BED



LENGTH: 19' 8" WIDTH: 8' 2" FLOOR LENGTH: 10' EXT. HEIGHT: 9' 9" INT. HEIGHT: 6' 10"

UWV: 3489 LP GAS: 30 WHEEL WELL WIDTH: 48" CAB OVER BED: 60" x 80" DINETTE BED: 40" x 69"




CENTER OF GRAVITY: 45" FRESH: 45 GAL GRAY: 20 GAL BLACK: 20 GAL

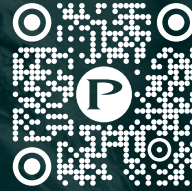


1. Palomino strongly recommends you check your trucks owners manual or contact the manufacturer for your trucks capabilities.
2. The center of gravity measurement is as built. Your options and loading on the truck may adjust this measurement.

# PALOMINO

1047 East M-86 | Colon, MI 49040  
P: 269.432.3271 | F: 269.432.2516  
[www.palominorv.com](http://www.palominorv.com)

Follow Palomino on:   



## Scan with your Mobile Device

Virtual Tours, Photos, videos, follow Palomino on Social Media, and more!  
[www.palominorv.com](http://www.palominorv.com)

## REAL-LITE WARRANTY

Palomino will stand behind our products 100%. For complete details on our warranty program, please see your Palomino dealer.

- 1 2 year fiberglass warranty
- 2 Lifetime Alpha Super Flex roof warranty
- 3 2-3 year warranty on appliances (See manual for details)
- 4 1 year warranty against any manufacturing defects



The National RV Dealers Association (RVDA) has recognized Palomino in their 30th annual Dealer Satisfaction Index (DSI) survey with a Quality Circle Award. Palomino scored 4.25 or above on a 5-point scale in overall dealer satisfaction.

Manufacturers are rated on the following core issues:

- Reliability/Quality
- Warranty
- Parts
- Sales

Visit [www.rvda.org](http://www.rvda.org) information about the RVDA.

## EACH NEW FOREST RIVER PURCHASE PROVIDES:

- ✓ Pre-delivery Inspection.
- ✓ Free Membership to Forest River Owners Group (FROG). Learn more at [www.forestriverfrog.com](http://www.forestriverfrog.com).
- ✓ A Contribution to Care Camps Foundation [www.carecamps.org](http://www.carecamps.org).
- ✓ 1 Year Free Roadside Assistance from Date of Purchase.



## LEARN MORE:

Scan this QR code with your mobile device to learn more about Forest River.



## SPECIFICATION DEFINITIONS:

Scan this barcode using a QR reader on your smartphone to learn RV terminology and more!



YOUR **REAL-LITE** DEALER

All information contained in this brochure is believed to be accurate at the time of publication. However, during any model year, it may be necessary to make changes to the manufacturing process of the units and information in this brochure. Your unit may differ from the information in this brochure due to any changes in the manufacturing process and equipment. Forest River, Inc. reserves the right to make all such changes without notice, including prices, colors, combinations, materials, equipment and specifications of any model as well as the addition of new models and the discontinuance of models shown in this brochure. Therefore, please consult with your Forest River dealer and confirm the availability of any materials, combinations, designs, or specifications that are meaningful to your purchase decision. © 2025 Palomino RV, a Division of Forest River, Inc., a Berkshire Hathaway Company. All Rights Reserved. Forest River, Inc. 01/25