

# NIW

TRAVEL TRAILERS  
BUILT DIFFERENT

## NORTHWOOD

# NASH

NASH TRAILERS



# BUILT DIFFERENT

**ABSOLUTE NORTHWOOD:  
WHERE OUR QUALITY BEGINS**

**INTERIOR COLORS  
FOR 2025**



Our Commitment to:  
**QUALITY  
STRENGTH  
DURABILITY**

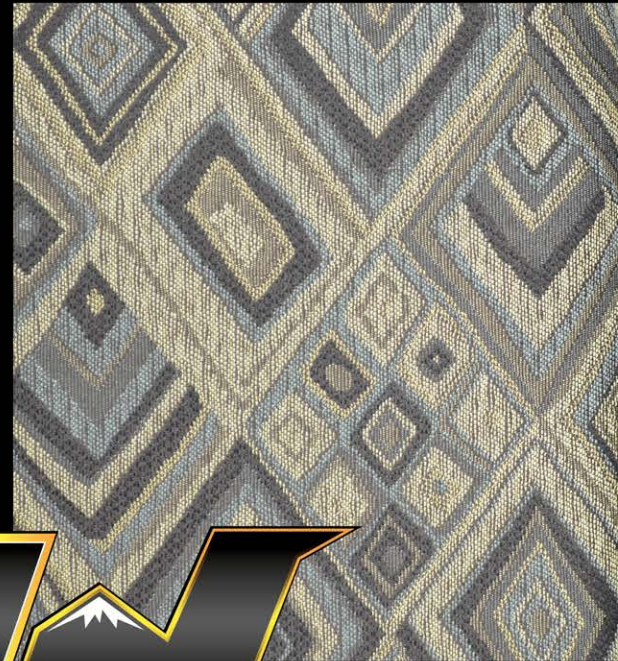
Loaded with ALL these Standard Features

- Shock Absorbers
- Certified Off-Road Chassis
- TG Plywood Floor Decking
- Plywood Roof Decking
- Heavy Gauge One Piece Roof Membrane
- ...plus these amenities...
- 12 Volt LED Power Awning
- Rear Receiver Hitch
- 10 Gallon Water Heater
- Generator Ready...

...and these Absolute Northwood Features

- LED Lighting Inside and Out
- Bonded Northwood Roof Truss System
- Residential Quality Face-Frame
- Custom Built Cabinetry
- All Conditions-Insulated & Heated Holding Tanks & Valves
- Heavy Gauge, Fully Welded, Thick Wall Aluminum Frame
- Solid Fill - Full Thread Depth Anchor Blocking
- Virgin 2lb. Rigid Dense Block Foam Insulation
- One Piece Fiberglass Exterior Wall
- Cathedral Arched Ceiling

**...STANDARD ON EVERY NASH!**



**SOLITAIRE AZUL**



**DESERT PALMS**

# BUILT OFF ROAD TOUGH

## ALUMINUM SUPERSTRUCTURE

### ROOF

✓ FULL WALK ON ROOF WITH BONDED ROOF TRUSS SYSTEM  
CATHEDRAL ARCHED CEILING

### FRAME

✓ HEAVY GAUGE FULLY WELDED ALUMINUM SUPERSTRUCTURE

### FLOORS

✓ COMMERCIAL GRADE LINOLEUM, FULLY INSULATED TONGUE AND GROOVE PLYWOOD (NOT CHIPBOARD)

### SLIDE OUTS

✓ 4 SEALS, SCHWINTEC INSULATED, CROSS VENTILATING WINDOWS

### CHASSIS

✓ CUSTOM BUILT, INDEPENDENTLY TESTED & CERTIFIED

### CABINETS

✓ WALL & CEILING MOUNTED, FACE FRAME CONSTRUCTION



#### A. NORTHWOOD ROOF TRUSS SYSTEM

- 1 Heavy Gauge One Piece Roof Membrane
- 2 3/8" Plywood Sheathing (Bonded to Trusses)
- 3 R-15 Reflective 'Arctic' Foil Insulation
- 4 R-14 Dual Layer Fiberglass Insulation
- 5 Cathedral Arched Roof Trusses (More overhead space)
- 6 Interior Lamination Grade Luan Plywood (Bonded to trusses)
- 7 Designer Interior Decor Finish Paneling

#### B. HIGH DENSITY ONE PIECE LAMINATED WALLS

- 8 Designer Interior Decor Vinyl Finish
- 9 Heavy Gauge Fully Welded Aluminum Superstructure
- 10 Solid Wood Fill - Full Thread Depth Anchor Blocking
- 11 Virgin 2 lb Rigid Dense Block Foam Insulation
- 12 Steel Inlaid Bonderizer Anchor Strips
- 13 Lamination Grade Luan Plywood Exterior Wall Layer
- 14 Corona Treated High Durability Fiberglass Outer Layer

#### C. ULTIMATE DURABILITY FLOOR STRUCTURE

- 15 Commercial Grade Linoleum with 20 mil Surface
- 16 5/8" T&G Plywood Decking (Not Chipboard)
- 17 R-7 Residential Grade Fiberglass Insulation
- 18 Reinforced Woven Highway Moisture Barrier

#### D. DUAL RACK & PINION RAM MAIN SLIDE ROOM

- 19 4 Seal System w/ Inner & Outer Bulb Seal
- 20 ...including Wiper Seal for Continual Seal (Any Position)
- 21 ...and Outer Bulb Seals

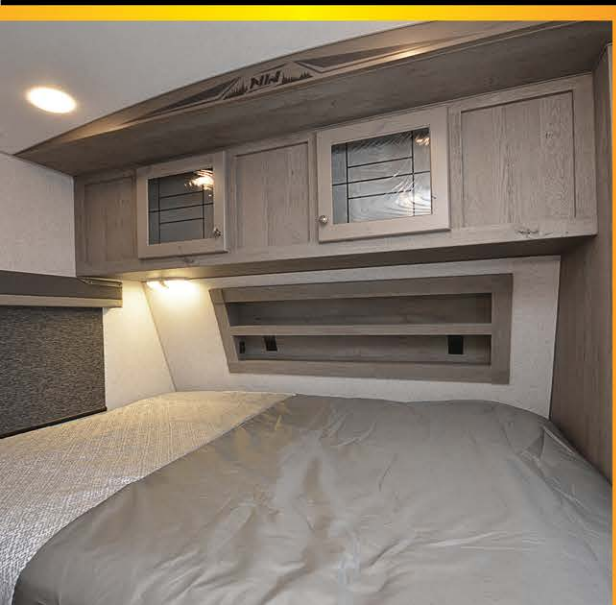
#### E. CHASSIS

- 22 Northwood Built Ironhorse Chassis
- 23 R-7 Residential Quality Formaldehyde Free Fiberglass Insulation
- 24 Corrugated Underbelly Panels
- 25 Heated and Insulated Large Capacity Holding Tanks
- 26 Easy Lube Axles and Shock Absorbers
- 27 Heavy Duty Radial Tires
- 28 Sealed All Metal Heat Ducts

#### MORE ABSOLUTE NORTHWOOD QUALITY FEATURES

- 29 All Foam Condensation Resistant A/C Ducts
- 30 Large Bath Skylight
- 31 Hi Output Roof Mount A/C
- 32 Roto Molded High Durability Wheel Skirts
- 33 Diamond Scored Sidewall Skirts (Some Models)
- 34 Diamond Plate Gravel Guard

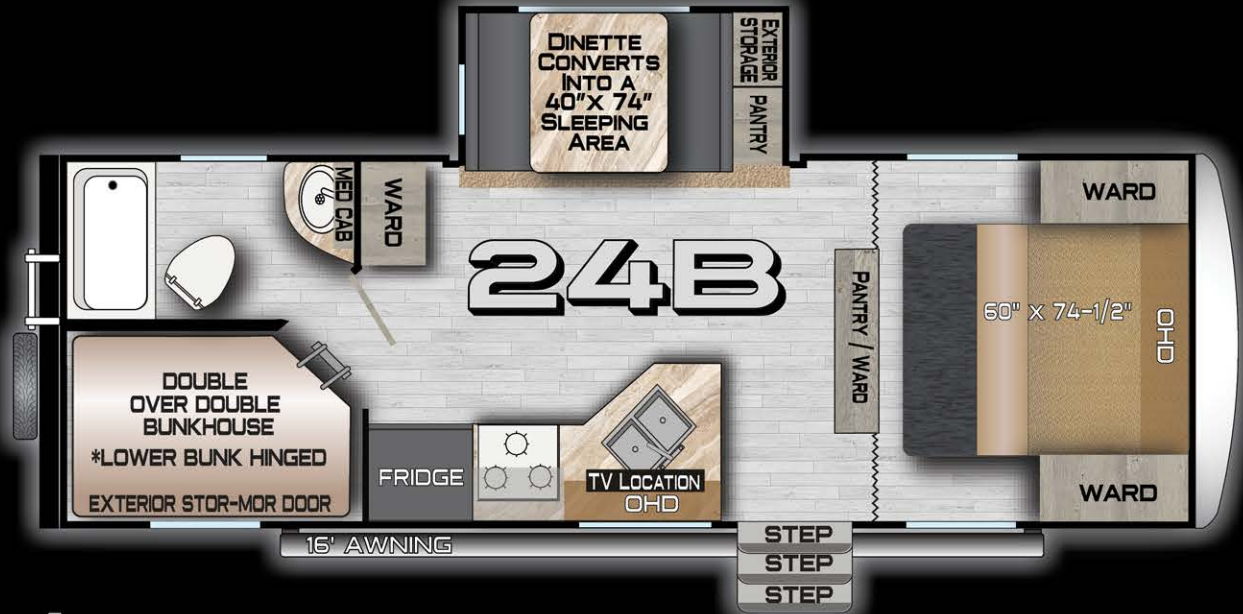
Our Northwood Built Chassis are Independently Tested & Certified by Pacific West Associates, Inc.









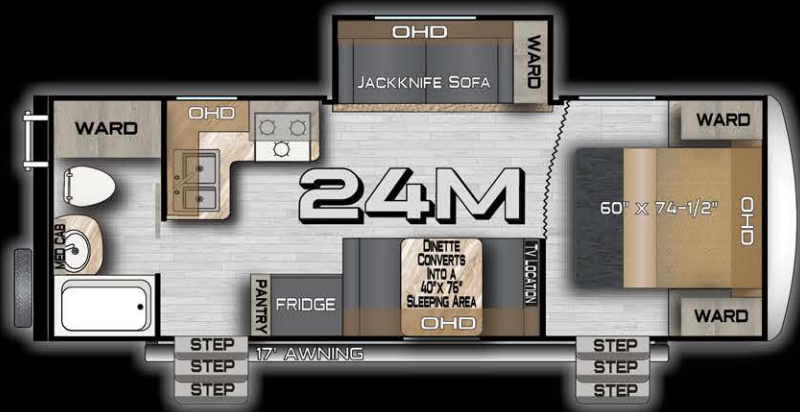


# 24B NASH

Dry Axle Weight (approx. Lbs.)	5702
Dry Hitch Weight (approx. Lbs.)	758
Net Carrying Capacity	2740
Gross Dry Weight (approx. Lbs.)	6460
Gross Vehicle Weight Rating (GVWR)-Lbs.	9200
Exterior Length (approx. w/hitch)	28' 8"
Exterior Height (approx. incl. AC unit)	11'6"
Exterior Width (approx. w/o awning)	8'0"
Tire Size	ST235 80R16
Load Range	E
Fresh Water w/ Water Heater (approx. gal.)	50
Gray Water Tank (approx. gal.)	42
Black Water Tank (approx. gal.)	35
LPG Capacity (approx. gal.)	14
CSA - Canadian Dealers Only	YES
Auto Ignition Furnace (1,000 BTUs)	25













# 29S NASH

Dry Axle Weight (approx. Lbs.)	6564
Dry Hitch Weight (approx. Lbs.)	796
Net Carrying Capacity	3340
Gross Dry Weight (approx. Lbs.)	7360
Gross Vehicle Weight Rating (GVWR)-Lbs.	10700
Exterior Length (approx. w/hitch)	32' 4"
Exterior Height (approx. incl. AC unit)	11'6"
Exterior Width (approx. w/o awning)	8'0"
Tire Size	ST235 80R16
Load Range	E
Fresh Water w/ Water Heater (approx. gal.)	50
Gray Water Tank (approx. gal.)	40
Black Water Tank (approx. gal.)	35
LPG Capacity (approx. gal.)	14
CSA - Canadian Dealers Only	YES
Auto Ignition Furnace (1,000 BTUs)	25



# WHAT IS ABSOLUTE NORTHWOOD?

## 1 CHASSIS

✓ Custom Built, Independently Tested & Certified

## 1 FRAME

✓ Fully Welded Aluminum Superstructure

## 1 ROOF

✓ Full Walk On, Bonded Roof Truss System

## 1 CABINETS

✓ Wall & Ceiling Mounted, Face Frame Construction

## 1 INSULATION

✓ A True 4 Season Coach

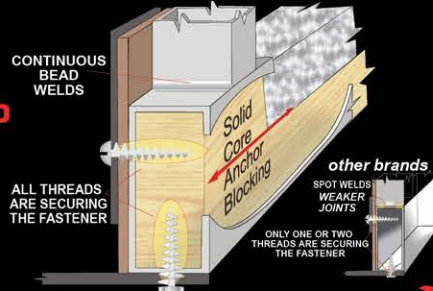


Our Commitment to  
QUALITY  
STRENGTH  
DURABILITY

When you purchase a Nash, you are investing in the best quality materials, construction and craftsmanship. That is why the resale value in a Nash remains higher, and your investment retains its value longer. If you ever decide to trade in your Nash, you will get top dollar. That is why you don't see many used Nash trailers on the market, folks buy them up as quickly as they become available because Nash trailers have a reputation for durability and longevity.

## ✓ SOLID CORE ANCHOR BLOCKING UTILIZING EVERY THREAD

At all critical anchor points, we include solid fill anchor blocking so all the threads of the fasteners anchor securely and completely.



## ✓ RESIDENTIAL QUALITY CUSTOM BUILT CABINETS

Our cabinetry is built w/solid wood doors, built with residential face frame construction methods. Drawers slide effortlessly on heavy gauge roller bearing drawer glides.



## ✓ ELECTRICAL FEATURES LED LIGHTS & SURGE TESTS

You will find energy efficient LED lighting both inside and out. Additionally, our 110V systems are surge tested multiple times with 1080 volts and the 12V systems are surge tested with 600 volts.



## THICK WALL ALUMINUM FRAME

## ALUMINUM SUPERSTRUCTURE

Aircraft Grade Tubing Up to 1/8" Thick .125"-.060" Thick frame with fully welded heavy gauge, thick wall aluminum tubing.



## ✓ ALL CONDITIONS 4 SEASON COACH

WARM AIR AROUND TANKS Heated enclosed holding tanks & dump valves. Designed for cold northern climates.



HEATED HOLDING TANK AREA



## ✓ NORTHWOOD ROOF TRUSS SYSTEM

### FULL WALK-ON ROOF

### GLUE BONDED STRUCTURE

- \* Exterior marine grade decking
- \* One piece heavy gauge membrane.
- \* Fully bonded ceiling, trusses and roof sheathing.
- \* Trusses w/ 5-1/2 inch height for plenty of runoff slope.



UP TO 4" OF EXTRA HEADROOM

## ✓ CERTIFIED OFF-ROAD CHASSIS

WE BUILD OUR OWN!

We are one of the few manufacturers who build their own chassis. The name NORTHWOOD is known throughout the industry for quality chassis and we certify ours through an independent testing lab.



# ARE YOU READY TO GO OTG?



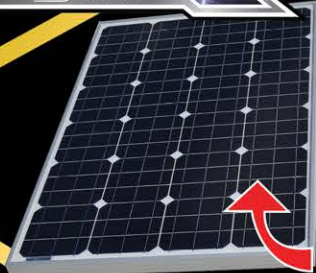
# NASH



# OFF THE GRID

## UPGRADED PACKAGE

THE OTG PACKAGE INCLUDES ALL OF THESE ITEMS:



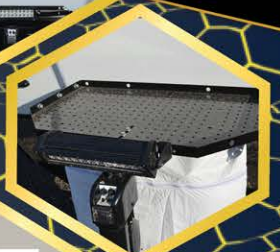
**NEW!**  
SolX 6 Solar Package



Custom OTG Graphics



Safari Tuff LP Rack w/ LED Light Bar



Dexter E-Z Flex Equalizers and KYB Shocks



12 Volt Awning w/ Weatherguard & RGB LED Lights



Rear LED Light Bar



Custom Rims w/ OTG Center Cap



16" GoodYear Wrangler Duratrac



Custom OTG Interior Badging



10 Gallon LP Tanks

**GO FARTHER, GO LONGER, GO OTG!**



JOSE AND CHISTELLA IN THEIR NASH 24M!



PHOTO SUBMITTED BY L. DUNCAN



PHOTO BY FONDA W.



PHOTO BY THE ALLAN FAMILY

## ALL CONDITIONS/FOUR SEASONS

Cozy camping in the Nash 25C 4-Season Trailer. When it was time for an upgrade for the Allan family of Calgary, they didn't hesitate to upgrade to Northwood's biggest bunkhouse trailer, the Nash 29S. Submitted by: The Allan Family



## QUALITY CONSTRUCTION CAN BE A LIFE SAVER!

This picture was sent in to Northwood by a repeat customer who lived in her 17K near Portland, OR. Due to excessive snow load, this tree uprooted and landed on her trailer while she was asleep inside!!!

Fortunately, we build Nash Trailers with 16" on center, select quality studs and quality plywood (instead of OSB board and 24" OC framing). If this had been a lesser quality trailer, it could have turned out much worse!!! Fonda said she was so impressed with Northwood quality that she just bought a brand new 2019 Arctic Fox 22G."

Submitted by: Fonda W.



# BUILT DIFFERENT

## STANDARD CONSTRUCTION FEATURES

Northwood Built, Independently Certified, Off-Road Chassis  
 Fully Welded, Thick-Wall Aluminum Frame Construction  
 Corona Treated Fiberglass  
 Laminated, Multi-Layered Substrate Walls & Floor  
 High Density Block Foam Insulation  
 Cathedral Arched Ceiling  
 E-Z Lube Axles  
 16" Aluminum Wheels / Tires & White Mod Spare  
 Shocks On All Four Wheels  
 12-Volt Power Tongue Jack / Manual Stabilizer Jacks  
 Easy Access LP Cover  
 4" Sewer Hose Carrier Bumper  
 All-Conditions/Four Seasons Insulation With R-14 Ceiling  
 R-15 Reflective Foil Insulation in Roof  
 Heated and Enclosed Tanks  
 Aerodynamic Front Fiberglass Cap w/ Diamond Plate Gravel Guard  
 Dinette Slide (18FM, 23D, 24B, 25DS, 29S)  
 Sofa Slide (23CK, 24M, 25KT, 29S)  
 Second Entry (24M, 25DS, 25KT, 29S)

## STANDARD EXTERIOR FEATURES

Thermal Pane Windows / Rear View Camera Ready  
 Exterior HD Ladder / Exterior Marine Grade Speakers  
 Pass Thru Storage w/Independently Switched LED Light  
 LPG Quick Connect & Black Water Flush System  
 Large Exterior Entry Grab Handle / Entry Door Friction Hinge  
 Exterior Shower  
 10 Gal DSI Gas/Elect Quick Recovery Water Heater  
 13.5m BTU Air Conditioner w/Condensation-Resistant Ducting  
 Charge Wizard with Li Switch / Digital Thermostat  
 12V LED Awning w/Adjustable Pitch  
 Omni-Directional TV Antenna/Battery Disconnect  
 SolX 4 - 400 Watt Solar Package  
 Generator Ready / Satellite Ready  
 2" Rear Receiver Hitch

## STANDARD INTERIOR FEATURES

LED Interior Utility & Decorative Lighting  
 Interior Command Center / NW Logo Cutting Board-Backsplash  
 Roller Bearing Drawer Glides  
 Slow Rise Night Shades / 2,000 Watt Inverter W/Trans Switch  
 AM/FM Stereo w/Bluetooth  
 Smoke, LPG & CO Leak Detectors  
 Custom Nash Signature Key Rack  
 Jackknife Sofa (24M, 25DS, 29S)  
 Booth Dinette (17K, 23CK, 24M, 25DS, 25KT)  
 Theater Seating 68" (23CK, 25KT)  
 U-shaped Dinette (18FM, 23D, 29S)  
 Custom One Piece Formed Countertops & Dinette Table



## STANDARD KITCHEN FEATURES

High Output 3-Burner Range & Cover  
 10 Cubic Foot 12 Volt Stainless Steel Refrigerator  
 Residential-style Microwave w/Air Fryer  
 Stainless Steel Sink/Sink Cover/Cutting Board

## STANDARD BATHROOM FEATURES

Porcelain, Foot-Pedal Toilet / Bath Skylight  
 Brushed Nickel Shower Screen  
 Full Tub (18FM, 24B, 29S)  
 Shower Pan (17K, 23D, 23CK, 24M, 25DS, 25KT)

## STANDARD BEDROOM FEATURES

Double Over Double Bunkhouse (24B, 29S)  
 NW TruRest Queen Mattress w/ Bedspread  
 Below Bed Storage  
 USB Charging Ports & 110 Outlets on Both Sides of Bed  
 Recessed Storage Headboard

## OPTIONS

Premium Fan Vent - Bedroom  
 Premium Fan Vent - Bathroom  
 Premium Fan Vent - Kitchen  
 Holding Tank Heat Pads (All Tanks)  
 Slide Out Topper (18FM, 23D, 23CK, 24M, 24B, 25KT, 29S)  
 24" 12v LED TV (23D)  
 32" 12v LED TV (17K, 18FM, 23CK, 24B, 24M, 25DS, 25KT, 29S)  
 15K Air Conditioner w/ Ducting (23D, 23CK, 24M, 25DS, 25KT, 29S)  
 Gateway Router  
 2.5 Onan LP Generator & 11K Power Saver A/C (17K, 18FM)  
 3.6 Onan LP Generator (23D, 23CK, 24B, 24M, 25DS, 25KT, 29S)  
 11K Pwr Saver A/C (use w/2.5 gen)(17K, 18FM)  
 SolX 6 + 200 Watts of Solar (All)  
 SolX 8 + 400 Watts of Solar (23D, 23CK, 24B, 24M, 25DS, 25KT, 29S)  
 SolX 10 + 600 Watts of Solar (29S)  
 Theater Seating 62" (Del. Jackknife) (24M, 25DS)  
 RV BBQ  
 Rear View Camera



# NASH

## STANDARD FEATURES & OPTIONS

CUSTOMER PHOTOS AND TESTIMONIALS  
 DO NOT NECESSARILY REFLECT  
 THE VIEWS OR RECOMMENDATIONS  
 OF NORTHWOOD MANUFACTURING.

Send us your testimonial with  
 your pictures and you may be  
 featured in our future promotions.  
 Send your information to:  
 feedback@northwoodmail.com

Model Number	17K	18FM	23D	23CK	24B	24M	25DS	25KT	29S
Dry Axle Weight (approx. Lbs.)	4177	5106	5134	5865	5702	5428	6090	6290	6564
Dry Hitch Weight (approx. Lbs.)	589	556	606	826	758	595	755	660	796
Net Carrying Capacity	2634	1738	1760	2509	2740	3177	2355	2250	3340
Gross Dry Weight (approx. Lbs.)	4766	5662	5740	6691	6460	6023	6845	6950	7360
Gross Vehicle Weight Rating (GVWR)-Lbs.	7400	7400	7500	9200	9200	9200	9200	9200	10700
Exterior Length (approx. w/hitch)	22' 4"	22' 11"	25' 10"	27' 8"	28' 8"	27' 3"	29' 2"	28' 5"	32' 4"
Exterior Height (approx. incl. AC unit)	11' 1"	11' 6"	11' 6"	11' 6"	11' 6"	11' 6"	11' 6"	11' 6"	11' 6"
Exterior Width (approx. w/o awning)	8' 0"	8' 0"	8' 0"	8' 0"	8' 0"	8' 0"	8' 0"	8' 0"	8' 0"
Tire Size	ST235 80R16	ST235 80R16	ST235 80R16	ST235 80R16	ST235 80R16	ST235 80R16	ST235 80R16	ST235 80R16	ST235 80R16
Load Range	E	E	E	E	E	E	E	E	E
Fresh Water w/ Water Heater (approx. gal.)	50	50	50	82	50	50	50	50	50
Gray Water Tank (approx. gal.)	35	42	42	47	42	42	40	40	40
Black Water Tank (approx. gal.)	36	35	35	36	35	35	35	35	35
LPG Capacity (approx. gal.)	14	14	14	14	14	14	14	14	14
CSA - Canadian Dealers Only	YES	YES	YES	YES	YES	YES	YES	YES	YES
Auto Ignition Furnace (1,000 BTUs)	25	25	25	25	25	25	25	25	25

All dry weights are calculated before adding options. Specifications are subject to change without notice. Verify the towing capacity of your tow vehicle. If you don't know or aren't sure, you can ask your automotive dealership or contact your tow vehicle manufacturer. All weights above are average approximations and may vary.

## YOUR LOCAL DEALER:



Updated Aug. 2024

Northwood Manufacturing, 59948 Downs Rd., PO Box 3359, La Grande, OR 97850 (541) 962-6274 - [www.northwoodmfg.com](http://www.northwoodmfg.com)

Photos, drawings, dimensions and weights are presented as accurate but may differ from current production models. We continually upgrade & improve our products and reserve the right to change any specifications without notice. Please see your authorized Northwood dealer for updated information.