

LEXION

Simply versatile.



LEXION S-LITE
TRAVEL TRAILER

LEXION S-LITE
FIFTH WHEEL

LEXION
FIFTH WHEEL



WELCOME HOME.

Comfort, dependability and durability are yours with the 2011 Lexion. Available in three different series (S-Lite travel trailer, S-Lite fifth wheel and fifth wheel), each with a wide variety of standard features, practical options and luxurious upgrades, the Lexion is one of the best buys anywhere. It's the perfect choice for those who enjoy the freedom of the open road but don't want to give up any of the comforts of home.

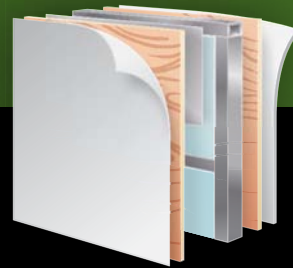
SIMPLY THE BEST CONSTRUCTION

We don't play games with our prices, and we don't make you pay for stuff you don't need. Instead, we put all of our time and energy into making a well-built, quality camper at an affordable price. In short, our campers are built for camping.



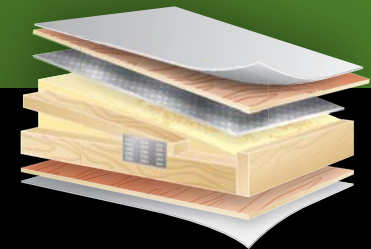
LEXION S-LITE FLOOR

Because a camper is only as strong as its foundation, we vacuum bond a welded tubular aluminum frame and 3/8" decking to create one of the industry's strongest floors.



LEXION S-LITE WALLS

Using TuffShell vacuum-bonded lamination, we combine gelled hi-gloss fiberglass, welded aluminum frames and metal backers to create a durable structure.



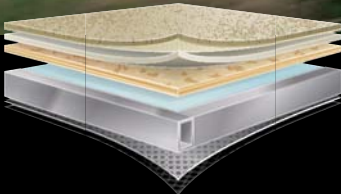
LEXION S-LITE ROOF

The combination of 4-1/2" arched wood rafters, 3/8" plywood decking, fiberglass and foil insulation (R-22) and a one-piece seamless rubber membrane give our roof the strength to fight off aging and moisture.

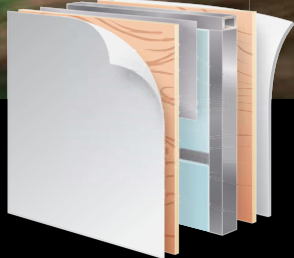


Lexion FW 354RTSA / Jasper

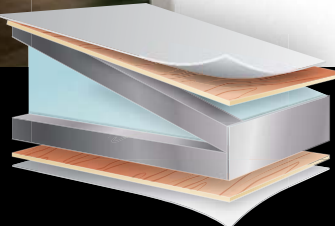
Lexion FW 354RTSA / Jasper



LEXION FIFTH WHEEL FLOOR
 We use 5/8" tongue-and-groove plywood decking on a welded aluminum frame, bead-foam insulation (R-24) and a Poly Flex covering to create a solid foundation.



LEXION FIFTH WHEEL WALLS
 Using TuffShell vacuum-bonded lamination, we combine gelled hi-gloss fiberglass, welded aluminum frames and metal backers to create long-lasting durability.



LEXION FIFTH WHEEL ROOF
 Featuring vacuum-bonded lamination, plywood decking, 5" arched aluminum trusses, bead-foam insulation (R-21) and a seamless rubber shield, our roof can handle the elements.

Lexion S-Lite Travel Trailers

LIGHT & EASY

Space, style and comfort are waiting in the Lexion S-Lite travel trailer. With a modern kitchen that includes Corian countertops, a three-burner range, 21" oven, lighted range hood and raised-panel cabinetry throughout, plus a large dining area with room for all your friends and family, you'll always feel right at home, no matter how far away you are.

A MODERN KITCHEN—INSIDE OR OUT

With Corian kitchen countertops, a brushed nickel mixing faucet with pull-out sprayer and Brown Sugar glazed cabinetry, the Lexion kitchen is as beautiful as it is functional, while an outside kitchen (select models), lets you enjoy the great outdoors while you cook.

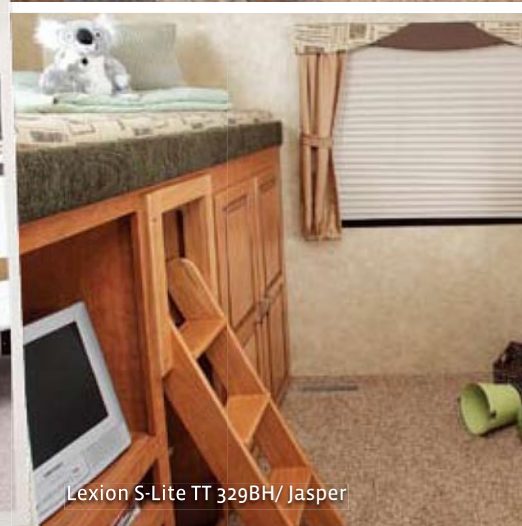
BIKE RACK

Lexion's optional bike rack/cargo tray system gives you easy access to your toys and gear.



Lexion S-Lite TT / Bike Rack

Lexion S-Lite TT 309QK / Outside kitchen



Lexion S-Lite TT 329BH/ Jasper



5 things you'll simply love: Gelled hi-gloss fiberglass | Corian solid-surface kitchen countertops | Torq-N-Go lug nuts | Vacuum-bonded lamination | Aluminum rims



Lexion S-Lite TT 314RE / Autumn



Lexion S-Lite TT 314RE / Autumn



Lexion S-Lite TT 309QK / Mocha

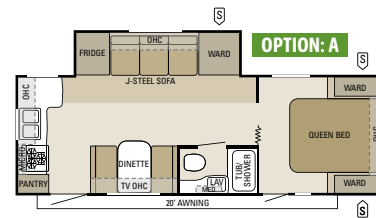


COMFY QUARTERS

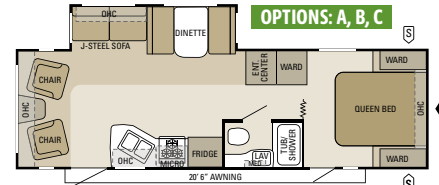
A bunk room, complete with a TV cabinet and wardrobe cabinet, provide the perfect place for the kids to escape (select models), while the bedroom features a coordinated, quilted bedspread, decorative headboard and 312-coil innerspring mattress.

Floorplans

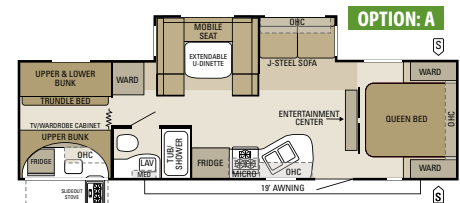
- STORAGE
- TRAILER HITCH
- BATHROOM SINK
- MICROWAVE
- OVERHEAD CABINETS
- REFRIGERATOR
- WARDROBE



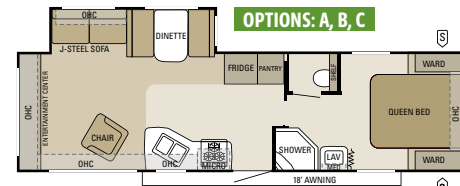
Lexion S-Lite Travel Trailer 254RK



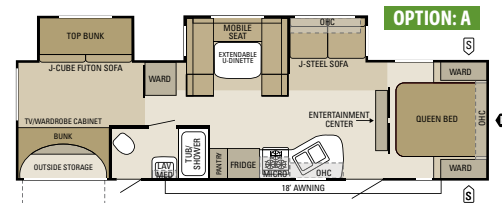
Lexion S-Lite Travel Trailer 294RL



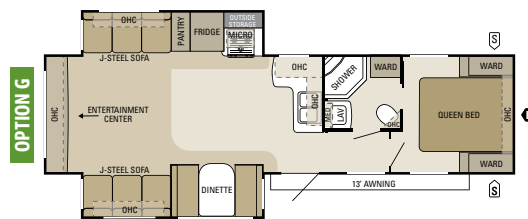
Lexion S-Lite Travel Trailer 309QK



Lexion S-Lite Travel Trailer 314RE



Lexion S-Lite Travel Trailer 329BH



Lexion S-Lite Travel Trailer 336RLSA

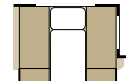
OPTION A



OPTION B



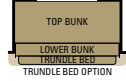
OPTION C



OPTION D



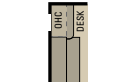
OPTION E



OPTION F



OPTION G



LEDGESTONE FIREPLACE OPTION

Lexion S-Lite Fifth Wheels

STAY & PLAY.

The Lexion S-Lite fifth wheel's expandable, comfortable and convenient floorplans make it easy to enjoy your time away from home. Beautiful raised-panel cabinetry throughout, a stainless-steel undermounted sink with pull-out sprayer faucet and modern appliances combine to make Lexion a welcome retreat at the end of the trail.

DREAM DINETTE

The Dream Dinette easily raises and lowers, making it a breeze to convert into a bed.

REAR ELECTRIC STABILIZER JACKS

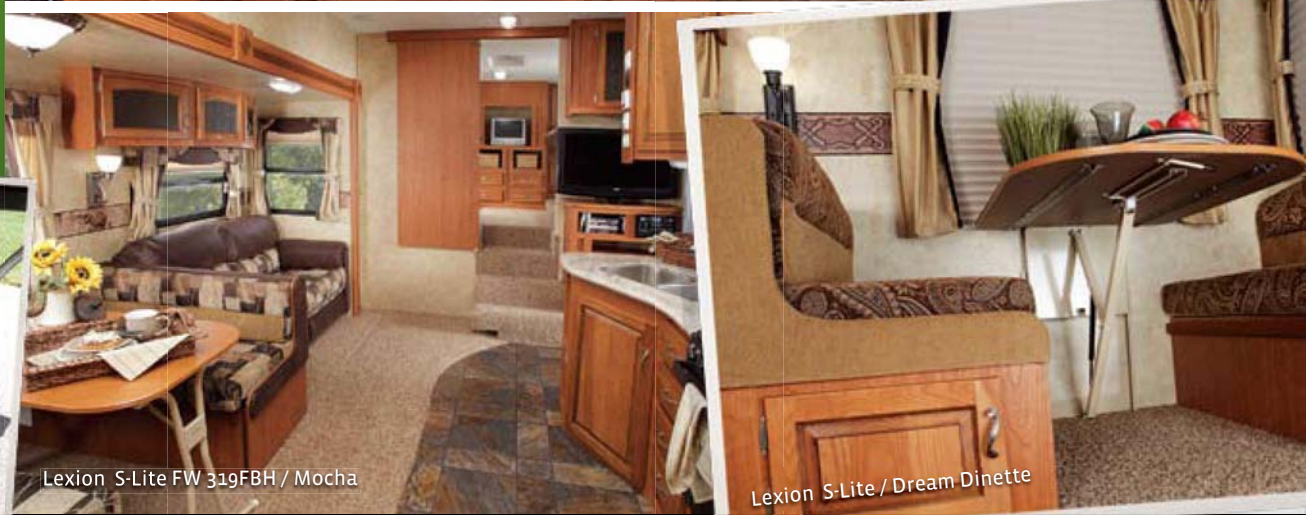
Leveling your camper just got easier with rear electric stabilizer jacks.



Lexion S-Lite FW 315BSSA / Jasper



Lexion S-Lite FW / Rear stabilizer jacks



Lexion S-Lite FW 319FBH / Mocha



Lexion S-Lite / Dream Dinette



5 things you'll simply love: Gelled hi-gloss fiberglass | Corian solid-surface kitchen countertops | Torq-N-Go lug nuts | Vacuum-bonded lamination | Aluminum rims



ROOM TO REST

There's plenty of space in Lexion's roomy bedroom with queen bed, dresser and laundry hamper. And with a separate bunk room, there's even more space to relax (select models).

REFRESHING BATHROOM

Lexion's bathroom features a medicine cabinet with mirror, large sink and six-panel, residential-style passage door.



Lexion S-Lite FW 315BSSA / Jasper



Lexion S-Lite FW 315BSSA / Jasper

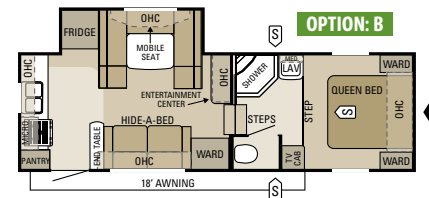
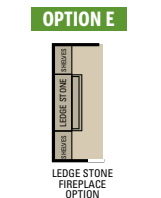


Lexion S-Lite FW 319FBH / Mocha

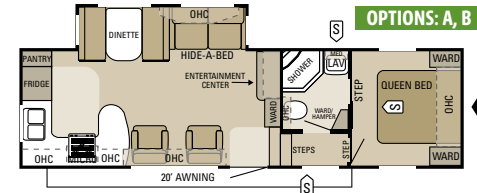


Floorplans

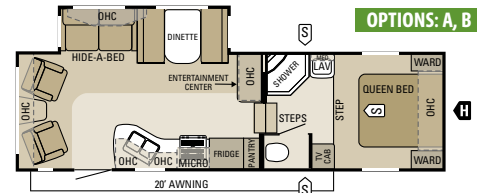
- STORAGE
- TRAILER HITCH
- BATHROOM SINK
- MICROWAVE
- OVERHEAD CABINETS
- REFRIGERATOR
- WARDROBE



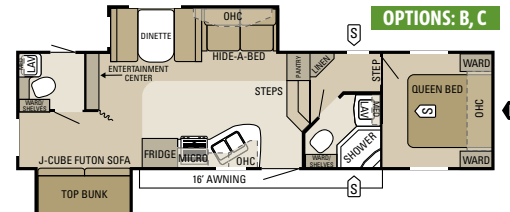
Lexion S-Lite Fifth Wheel 256RKU



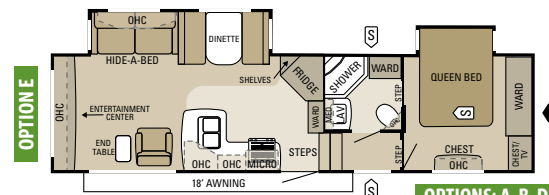
Lexion S-Lite Fifth Wheel 295RKS A



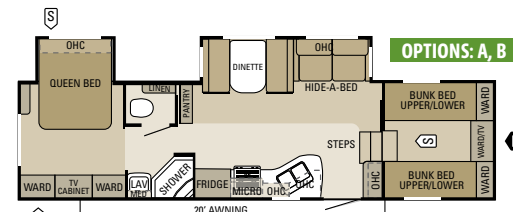
Lexion S-Lite Fifth Wheel 295RL



Lexion S-Lite Fifth Wheel 308RBS A



Lexion S-Lite Fifth Wheel 315BSS A



Lexion S-Lite Fifth Wheel 319FBH

Lexion Fifth Wheels

SPACIOUS.

Roomy slideouts, a 40" LCD HDTV, a super-comfy hide-a-bed sofa and residential-style furniture are just a few of the special home-like touches in Lexion's living area, while the kitchen features Corian solid-surface countertops, beautiful Brown Sugar Glazed cabinetry and sleek, modern appliances.

ARCTIC PACKAGE

Our exclusive Starcraft Arctic Package protects against freezing (temperatures as low as 0°F or -17°C). (Lexion FW only.)

ELEGANT EXTERIOR

A one-piece, gelled hi-gloss fiberglass rear cap, standard dark-tinted frameless windows and Lexion's optional partial paint package create a durable exterior that's easy on the eyes, while rear electric stabilizer jacks make setting up camp easier.



Lexion FW 354RTSA / Jasper



Lexion FW / Exterior



Lexion FW 354RTSA / Jasper



Lexion FW 325FWSA



things you'll simply love:

Gelled hi-gloss fiberglass | Corian solid-surface kitchen countertops | Torq-N-Go lug nuts | Vacuum-bonded lamination | Frameless windows



Lexion FW 354RTSA / Jasper

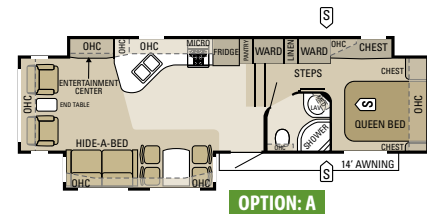


Lexion FW Partial Paint Package (optional)



Lexion FW 354RTSA / Jasper

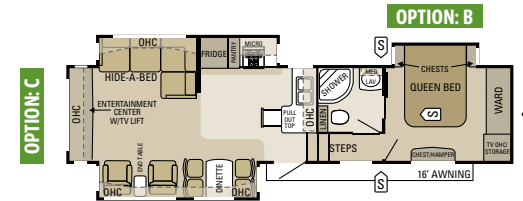
Floorplans



OPTION: A

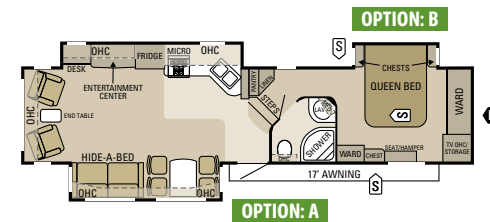
Lexion Fifth Wheel 325FWSA

- STORAGE
- TRAILER HITCH
- BATHROOM SINK
- MICROWAVE
- OHC
- FRIDGE
- WARD



OPTION: B

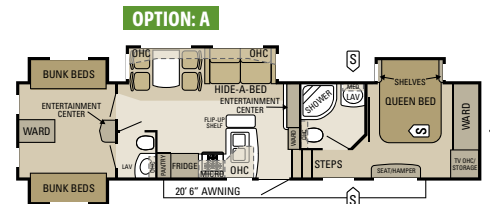
NEW Lexion Fifth Wheel 354RTSA



OPTION: B

OPTION: A

Lexion Fifth Wheel 355RESA



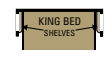
OPTION: A

Lexion Fifth Wheel 359BHSA

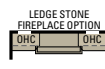
OPTION A



OPTION B



OPTION C



Standards and options

SUITE TT
SUITE FW
FIFTH WHEEL

STANDARD BATHROOM EQUIPMENT

- 6-panel residential-style passage door
- ABS shower surround
- Glass shower door (select models)
- Large sink in bathroom
- Marine toilet with foot flush
- Medicine cabinet with mirror
- Radius-glass shower door
- Shower curtain with curved shower track (select models)
- Skylight in tub/shower
- Switches for all lights
- Thetford porcelain toilet with foot flush
- Toilet paper holder
- Towel holder
- Towel ring
- Vinyl flooring

STANDARD BEDROOM EQUIPMENT

- 6-panel residential-style passage door
- 312-coil innerspring mattress
- Accordion door to bedroom (select models)
- Bed lifts up easily on gas struts
- Coordinated, quilted bedspread
- Decorative headboard (n/a 319FBH)
- Decorative reading lights
- Dresser lamp
- Large pass-through storage
- Laundry hamper
- Roof vent
- Shirt wardrobe
- TV cabinet (select models)

STANDARD KITCHEN EQUIPMENT

- 3-burner range with 9,000-BTU SuperBurner and piezo igniter
- 6-cu. ft. flush-mount refrigerator
- 8-cu. ft. flush-mount refrigerator with double door
- Brown Sugar Glazed raised-panel refrigerator front
- Brushed nickel mixing faucet with pull-out sprayer
- Corian cover for sink
- Corian kitchen countertops
- Decorative wood spindles on base cabinets
- Deep storage drawers under booth dinette seat
- Deep storage drawer under booth dinette seat, door on other dinette seat
- Drawer for silverware, divided for utensils
- Dream Dinette mechanism, raises and lowers dinette table
- Extra large picture window at dinette
- Free-standing table with 4 dining chairs

SUITE TT
SUITE FW
FIFTH WHEEL

- Mini blind
- Oversized 21" oven
- Range hood with light and exhaust fan
- Stainless-steel under-mounted sink
- Sponge holder under sink
- Wallpaper border

STANDARD CONSTRUCTION EQUIPMENT

- 3/8" engineered Structurwood main floor decking
- 5/8" tongue-and-groove plywood main floor decking
- 2" x 3" longitudinal floor studs placed on 16" centers
- 4-1/2" arched truss roof rafters with R-22 insulation
- 81" ceiling height
- Aerodynamic wrap-around front fiberglass cap
- Arctic Package insulation
- Bead-foam insulation (R-7 sidewalls, R-9 floor)
- Cabinetry crafted with screwed-stile construction
- Electric-powered slideout(s)
- Foil insulation in main floor and all slideout floors
- Foil insulation in roofs and slideout floors
- Frame prepped for bike rack/cargo tray
- Fully decked roof with 3/8" plywood
- Gelled hi-gloss fiberglass sidewall exteriors
- Heated and enclosed fresh water tank and holding tanks
- I-Class cambered structural-steel I-beam frame
- Pin box, long
- Platforms for dinette, bed and bunks constructed of 1/2" plywood
- Poly Flex one-piece covering for underbelly
- R-21 insulation in roof, R-9 in sidewalls, R-24 in floor and underbelly, R-15 in slideout floors
- Rear one-piece fiberglass cap
- Seamless one-piece rubber roof
- TuffShell vacuum-bonded laminated 5" crowned roof
- TuffShell vacuum-bonded laminated sidewalls
- TuffShell vacuum-bonded laminated floor
- Welded tubular aluminum floor and sidewall frame work

STANDARD EXTERIOR EQUIPMENT

- 2-5/16" hitch coupler
- 12V hitch light
- 15" radial tires
- 16" radial tires
- 30" main entry door
- ABS fender skirt
- Aerodynamic front profile
- Amber patio lights with inside switch
- Big Easy entrance step with 10" deep treads

SUITE TT
SUITE FW
FIFTH WHEEL

- Bumper with drain hose carrier and end caps
- Egress window
- Electric-powered front and rear jacks
- Exterior speakers, high-output marine-grade (2)
- E-Z Lube axles
- Fiberglass rear cap
- Foldable exterior grab handle
- Frameless tinted safety-glass windows
- Front diamond plate
- Front jacks with quick-release pins
- Galvanized-steel wheel wells
- Lockable baggage doors, insulated and radius-cornered
- Molded rain guttering with drip spouts
- MOR/ryde CRE3000 axle equalizer
- Nev-R-Adjust brakes
- Outdoor media center
- Pass-through storage compartment
- Prep for outside grill
- Polished aluminum wheels
- Roof ladder
- Screened egress bunk windows
- Security light, door side
- Stabilizer jacks (2 pairs)
- Stor-Galore basement storage
- Torq-N-Go wheel nuts

STANDARD INTERIOR EQUIPMENT

- 22" LCD HDTV in living area (n/a 314RE)
- 26" LCD HDTV in living area (314RE and 336RLSA)
- 32" LCD HDTV in living area
- 40" LCD HDTV in living area
- Arched step treads into bathroom
- Ball bearing drawer guides 50-lb. capacity with full-drawer extension
- Ball bearing drawer guides 100-lb. capacity with full-drawer extension
- Brown Sugar Glazed raised-panel doors and drawers throughout
- Cabinet door hinges, hidden throughout
- Cable and satellite TV prepped
- Ceiling fan
- Crank-up HDTV antenna with signal booster
- Fabric-covered box valances with drapes
- Free-standing end table
- Halogen recessed 12V lighting throughout
- Hide-a-bed sofa (air mattress)
- J-Steel convertible sofa
- Linoleum floor in entryway

SUITE TT
SUITE FW
FIFTH WHEEL

- Overhead cabinets in slideout room above sofa
- Pleated day/night shades throughout
- Pleated night shades
- Residential furniture, designed and made by Starcraft
- Rocker recliner(s) (select models)
- Roof-mounted antenna for radio
- Solid hardwood interior grab handle for main entrance door
- Swivel rocker (2) (294RL)
- Trackless carpeting with pad
- Transom window with wood trim above main slideout room
- Trim around main entrance door
- Ventilating windows on slideout end walls
- Vinyl flooring
- Wallpaper border
- Weathered iron cabinet hardware
- Weathered iron decorative lighting at sofa and dinette

STANDARD HEAT, POWER AND WATER EQUIPMENT

- 12V demand water pump
- 12V electrical system with deluxe 120V 45-amp power converter
- 12V electrical system with deluxe 120V 80-amp power converter
- 30-amp power cord
- 50-amp power cord
- 120V G.F.C.I. protected exterior receptacle
- ABS holding tanks
- A/C Chillgrille
- Auto-ignition furnace with wall thermostat
- Battery box for two batteries
- Black holding tank sprayer
- Double 30-lb. propane tanks on sliding tray
- Gravity fill for water
- Hookup for city water
- In-floor ducted heating
- Outside shower
- Rotocast fresh water holding tanks
- Systems monitor panel
- Uni-Dock utility center, heated and enclosed
- Water heater bypass system
- Water system winterization kit

STANDARD SAFETY EQUIPMENT

- Breakaway switch
- Deadbolt lock on entrance door
- Dual hitch safety chains
- Fire extinguisher
- Propane/carbon monoxide alarm

Décor

S-LITE TT
S-LITE FW
FIFTH WHEEL

- Smoke alarm
- Tinted safety-glass windows

OPTIONS

- 2nd 13,500-BTU A/C in bedroom
- 2nd rocker recliner (315BSSA)
- 12 cu. ft. 4-door refrigerator (359BHSA, 354RTSA)
- Bedroom carpet
- Bike rack/cargo tray system
- CD stereo in bunk (359BHSA)
- Customer Convenience Package
- Dinette in lieu of free-standing table
- Electric tongue jack
- Extendable dinette (select models)
- Frameless thermal pane windows
- Free-standing table with 4 chairs (select models)
- Generator prep
- Hide-a-bed sofa (air mattress)
- King bed (355RESA, 354RTSA)

S-LITE TT
S-LITE FW
FIFTH WHEEL

- Leather rocker recliner chairs (n/a 359BHSA)
- Ledgestone fireplace and 32" LCD HDTV (336RLSA)
- Ledgestone fireplace and 40" LCD TV (315BSSA)
- Ledgestone fireplace surround
- Ledgestone fireplace (354RTSA)
- Linoleum in living area (n/a 319FBH)
- Outside grill
- Outside kitchen (329BH)
- Partial paint package
- Rocker recliner in lieu of sofa (336RLSA)
- Rocker recliners (2) in lieu of swivel rockers (2) (294RL)
- Slideout awnings
- Thermal pane windows
- Trundle bed in lieu of futon (308RBSA, 329BH)
- Water purification system

CUSTOMER CONVENIENCE PACKAGE

- 6-gal. gas/electric DSI auto-ignition water heater
- 12-gal. gas/electric DSI auto-ignition water heater

S-LITE TT
S-LITE FW
FIFTH WHEEL

- 13,500 or 15,000-BTU A/C with wall thermostat and louvered directional ceiling vents
- 15,000-BTU A/C with louvered and directional ceiling vents
- ABS tub surround
- Bathroom power vent
- Carefree Travel'r 12V electric patio awning
- Deluxe pillowtop mattress (60" x 80")
- Double 30-lb. propane gas bottles with regulator
- Electric rear stabilizer jacks
- Floor-mounted safe
- Foldable, exterior grab handle
- Microwave oven with carousel
- Multi-Media Premium Sound System AM/FM/CD/DVD stereo with MP3 and iPod input jack
- Outside shower
- Security lights (2)
- Skylight in tub/shower
- Spare tire
- Water purification system

Specifications

	Floorplan	Exterior Length	Exterior Height with A/C	Ext. Height with Optional Bedroom A/C	Interior Height	Unloaded Vehicle Weight (lbs.)	Dry Hitch Weight (lbs.)	Gross Vehicle Weight Rating (lbs.)	Cargo Carrying Capacity (lbs.)	Fresh Water Capacity (gal.) (includes water heater)	Gray Waste Water Capacity (gal.)	Black Waste Water Capacity (gal.)
LEXION S-LITE TRAVEL TRAILER	254RK	28' 5"	133"	—	81"	5,940	730	7,500	1,560	36.5	65	32.5
	294RL	31' 5"	132"	—	81"	6,305	820	7,950	1,645	36.5	32.5	32.5
	309QK	33' 4"	134"	—	81"	7,185	935	8,500	1,315	36.5	32.5	32.5
	314RE	33' 7"	133"	—	81"	6,790	790	8,300	1,510	36.5	65	32.5
	329BH	35' 3"	133"	—	81"	7,685	925	9,375	1,690	36.5	32.5	32.5
	336RLSA	TBD	TBD	—	TBD	TBD	TBD	TBD	TBD	TBD	TBD	TBD
LEXION S-LITE FIFTH WHEEL	256RKU	28' 10"	150"	—	77"	7,675	1,470	10,000	2,325	82	65	32.5
	295RKSA	31' 10"	151"	—	72"	8,215	1,640	10,700	2,485	90	65	32.5
	295RL	30' 9"	151"	—	77"	7,970	1,645	10,200	2,230	90	65	32.5
	308RBSA	34' 1"	153"	—	72"	9,160	1,805	11,700	2,540	82	65	65
	315BSSA	34' 8"	152"	—	72"	9,240	2,030	11,700	2,460	82	65	32.5
	319FBH	34' 2"	152"	—	67"	8,820	1,725	11,200	2,380	82	65	32.5
LEXION FIFTH WHEEL	325FWSA	35' 8"	156"	162"	77"	11,215	2,335	14,750	3,535	87	52	52
	354RTSA	38' 11"	151"	158"	77"	11,365	2,265	15,250	3,885	87	87	52
	355RESA	39' 6"	151"	160"	77"	11,310	2,495	14,950	3,640	87	87	52
	359BHSA	40' 6"	160"	160"	77"	11,855	2,325	15,800	3,945	87	89	89

Unloaded Vehicle Weight (UVW): Sometimes referred to as "Dry Weight," UVW means the typical weight of this trailer as built at the factory. The UVW, as used in product literature and other promotional materials, does not include cargo, fresh water, propane, options or dealer-installed accessories.

Gross Vehicle Weight Rating (GVWR): GVWR means the maximum permissible weight of the trailer, including the UVW plus passengers, personal items, all cargo, fluids, options, and dealer-installed accessories. The GVWR is equal to or greater than the sum of the UVW and the CCC.

Cargo Carrying Capacity (CCC): CCC means the maximum weight of all passengers, personal items, food, fresh water, propane, tools, other cargo and dealer-installed accessories that can be carried by the trailer. CCC is equal to or less than GVWR minus UVW. The addition of options will decrease the CCC.

Hitch Weight (HW): The hitch weight, as used in product literature and other promotional materials, does not include cargo, fresh water, propane gas, options or dealer-installed accessories. The addition of these types of items will either add to or subtract from the stated hitch weight.

It is important for your safety and enjoyment that your tow vehicle be adequately sized and equipped to tow and handle the GVWR of the RV you select. Review weights and rating of your tow vehicle and consult a competent advisor for questions or advice. Whether you are new to RVing or a veteran, get a feel for the performance of your tow vehicle and the RV together before heading out on the roadways. When you tow an RV, you must drive differently than you do when driving a single vehicle. Practice hooking up, driving, backing up and braking in a safe environment or seek out professional instruction. Starcraft affixes a weight label to each RV which lists weight information for that vehicle. See specification chart above.

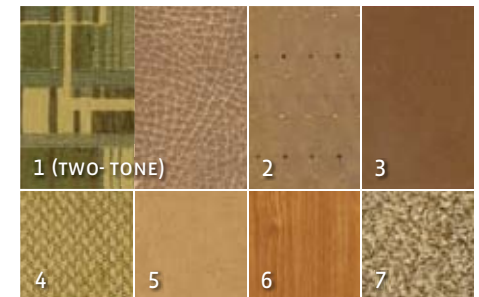
MOCHA



AUTUMN



JASPER



- 1 Sofa (two-tone)
- 2 Bedspread
- 3 Accent fabric
- 4 Chair
- 5 Drapery
- 6 Wood
- 7 Carpet

Built on tradition.

The Starcraft name has been around for more than 40 years – becoming one of the most dependable names in the camping industry. Today, our strong balance sheet and family-oriented business approach means we'll be around for decades to come. And you can bet our campers will continue to come with **everything you need to have a great time in the great outdoors, at a price that guarantees you will.**

One-year warranty

The Starcraft warranty is a manufacturer's limited warranty. Each Starcraft is warranted to the original purchaser for twelve (12) months from the original date of purchase against defects in materials and workmanship. Starcraft's limited warranty is not transferable. For a copy of the limited warranty with full terms and conditions, ask your local Starcraft dealer.

One-year roadside assistance

Travel worry-free with the complimentary Coach-Net Roadside Assistance program, which gives you immediate access to dependable roadside assistance with a simple phone call.

Why a Local Starcraft Dealer is Important to You

Establishing a solid relationship with your local Starcraft dealer is a key component in the enjoyment of your new Starcraft. By purchasing from a local dealer, you will have a convenient location for sales, parts and service support.



STARCRAFT

CAMPING | *pure and simple.*

© Starcraft RV • Topeka, IN  
www.starcraftcamping.com

See dealer for further information and prices. All information in this brochure is the latest available at the time of publication approval. Starcraft reserves the right to make changes and to discontinue models without notice or obligation. Photos in this brochure may show optional equipment and props for photography purposes. RV's built for sale in Canada may differ to conform to Canadian codes.

www.starcraftcamping.com | STOP BY OUR HOME ON THE WEB FOR MORE INFORMATION OR TO FIND A DEALER NEAR YOU.

