

05 Spirit®





05 Spirit | Catch the Spirit.

Choosing a motor home is a fun and rewarding experience, especially when you select an Itasca Spirit, built by the most trusted name in motor homes: Winnebago Industries®. With ten flexible floorplans ranging from 22 to 32 feet, there's a Spirit that is perfect for your weekend trips or family vacations. Every floorplan incorporates SmartSpace,™ an innovative design philosophy that makes the most of interior living areas by maximizing functionality and user-friendly features. Add it all together and it's easy to see the Spirit provides the best value in its class.



Pinehurst



Blue Topaz



Tumbleweed



Portsmouth
Oak

☛ The Itasca Spirit offers a level of refinement that you might not expect in a Class C motor home. The beautiful cabinetry highlights the interior with elegant raised-panel construction and a rich catalyzed finish. Stitchcraft furniture, day/night pleated shades and overhead lights with wall switches all add to the residential feel of the Spirit. A convenient thermostat controls both the heating and ceiling-ducted air conditioning. The available heat pump can also be added to warm the motor home on cool mornings without needing the furnace.

The 27L and 29B offer a rear-slideout bedroom with a queen-size bed and underbed storage. Additional storage can be found in the mirrored wardrobe and deep overhead cabinets. There's even a handy vanity area with a tip-up mirror on the 29B. The bathroom features a skylight in the shower and a residential-height toilet.



29B Pinehurst



29B

Every Spirit galley takes full advantage of the available space and the 29B, shown here, is no exception. It has an abundance of storage in the beautiful Portsmouth Oak cabinetry. There's plenty of workspace, too, with a flip-up countertop and cover for the recessed sink. A 3-burner Magic Chef® range/oven and a built-in microwave help you prepare your favorite dishes. A water purification system is also available.



A beautifully crafted front entertainment center is available on most models. It comes with a 24" TV and a DVD/VCR combo. Upgrade to the Home Theater Sound System for a stereo receiver, amplifier, DVD/VCR combo, five surround-sound speakers and a subwoofer.



Long trips are a breeze when you're riding in the high-back, reclining cab seats of the Spirit. They have multiple adjustments, fixed lumbar support and are available in UltraLeather HP™ for added luxury. Winnebago Industries' exclusive Trimline™ center console (below) provides easier access to the cab area and includes two cup holders, a storage compartment and matches nicely with the optional pewter dash appliqué (not shown). Power door locks and windows, and a remote keyless entry system are standard.



Stay in touch around the campsite and beyond using the available two-way radios. The radios have up to a 5-mile range and recharge from the house batteries in a built-in charging station.



RV•RADIO® Winnebago Industries' worked closely with the radio manufacturer to create the RV Radio®, designed specifically for motor home applications. Large control knobs and buttons are easy to operate and you can run it from the house batteries by flipping the radio power switch. A weather band provides updates at the touch of a button. New for 2005, the RV Radio includes a convenient steering wheel remote and a hand-held remote for operation when you are parked.



The available, visor-mounted LCD rearview monitor makes backing and maneuvering even easier. It's always in perfect viewing position when needed and flips out of the way when not in use.



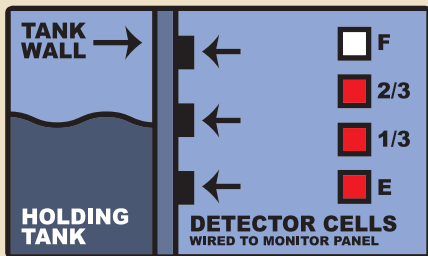
The Spirit 31T and 32G feature the StoreMore® slideout system. Winnebago Industries pioneered this system to make storage more accessible by allowing storage bays to extend with the slideout room. Loading and unloading your gear has never been easier.



The 26A boasts an innovative rear storage trunk. It has wire shelves and storage hooks for organizing your gear and it's large enough to hold a step ladder.



Spend the day outside and still listen to your favorite tunes. The available exterior entertainment center includes an AM/FM stereo, CD player, 12-volt DC receptacle, TV jack, 110-volt outlet and speakers housed in a lockable compartment. A removable table is also included.



TRUELEVEL
HOLDING TANK MONITORING SYSTEM

Winnebago Industries exclusive TrueLevel™ holding tank monitoring system incorporates Mirus™ detector cell technology to ensure accurate fresh and waste water tank level readings. Mirus detector cells produce a micro-electrical field that detects liquid levels from outside the tank. No more probes to corrode or clog. Just true, accurate readings time after time.



The exterior service station is conveniently located for quick and easy hookups. A winterization package comes standard and heated holding tanks can be added to help extend your camping season.



Enjoy your favorite TV programs and movies with the available satellite dish. Every Spirit is pre-wired for the digital satellite dish and elevation sensor so you can choose it now or add it later. (Digital satellite reception requires a satellite receiver and subscription.)

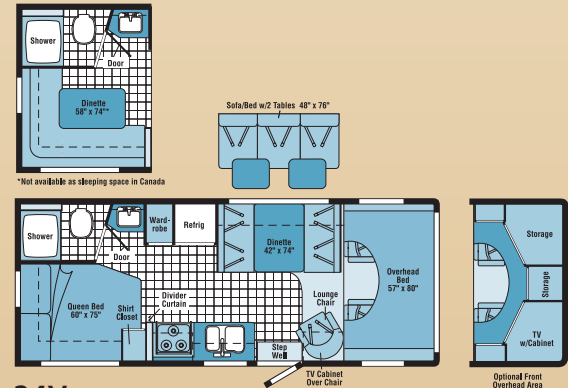
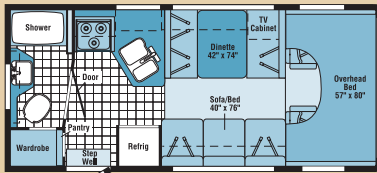
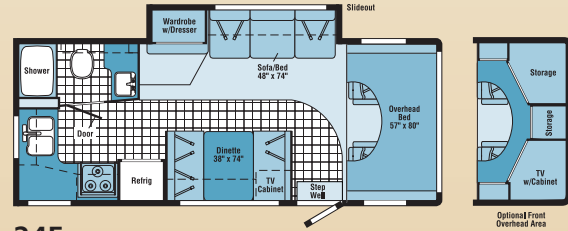
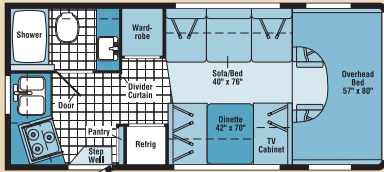


A heavy-duty hitch with a 5,000-lb. towing capacity and 350-lb. maximum vertical tongue weight is perfect for towing vehicles.

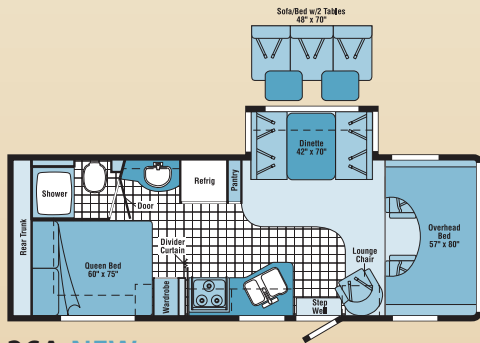


Rinse off shoes and toys at the available wash station before the kids track dirt inside.

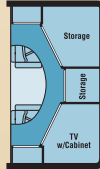
05 Spirit | FLOORPLANS



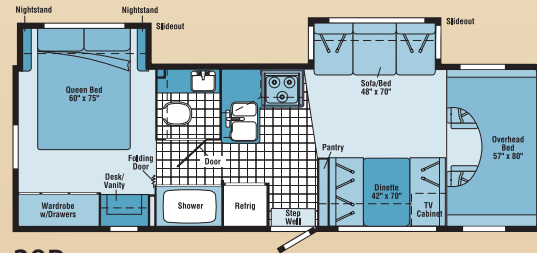
Note: Dimensions shown are for sleeping space only and may vary due to styling differences. Dashed lines denote overhead storage areas.



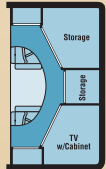
26A NEW



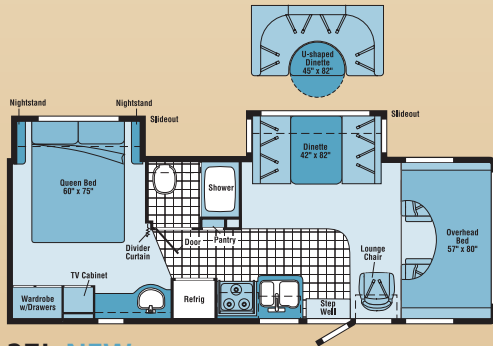
Optional Front Overhead Area



29B

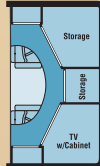


Optional Front Overhead Area



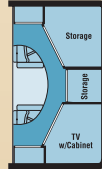
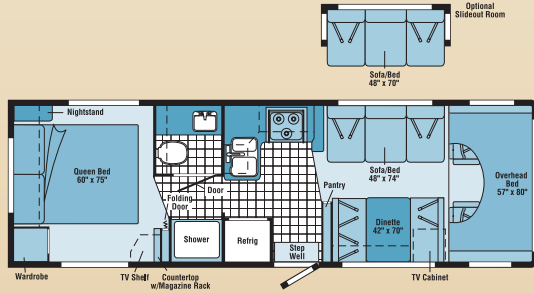
27L NEW

Available November 2004

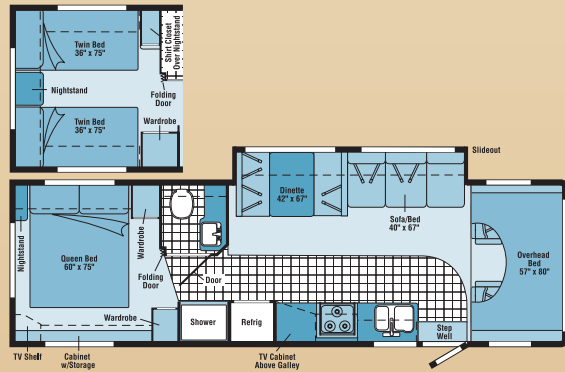


Optional Front Overhead Area

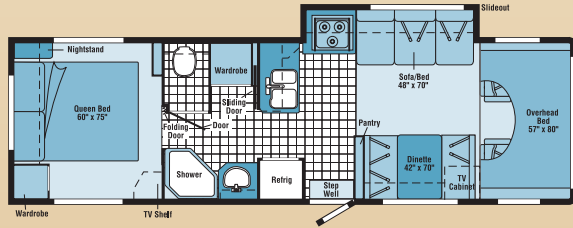
05 Spirit | FLOORPLANS



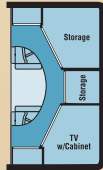
29K



31T



32G



Note: Dimensions shown are for sleeping space only and may vary due to styling differences. Dashed lines denote overhead storage areas.

EXTERIOR DESIGN

Your Spirit will look sharp for years to come thanks to the strong, one-piece fiberglass sidewalls. Choose the available deluxe graphics package with lower paint and painted fiberglass running boards to really let your Spirit stand out. The available dual-glazed, thermo-insulated windows add additional energy efficiencies in all types of weather.



Standard Graphics Package - Lago Blue Metallic



Optional Deluxe Graphics Package - Glacier Green Metallic

05 Spirit | SPECIFICATIONS

Weights & Measures	22E	22R	24F	24V	26A NEW	27L NEW	29B	29K	31T	32G
Length	22'1"	22'1"	24'7"	24'7"	26'11"	27'11"	29'4"	29'4"	31'4"	32'1"
Exterior Height ¹ w/AC	10'10"	11'0"	11'3"	11'5"	11'2"	11'1"	11'2"	11'3"	11'3"	11'4"
Exterior Width ²	8'5.5"	8'5.5"	8'5.5"	8'5.5"	8'5.5"	8'5.5"	8'5.5"	8'5.5"	8'5.5"	8'5.5"
Exterior Storage ³ (cu. ft.)	10.7	17.1	35	38	117.1	19.9	57.6	52.6	38.6	45.5
Interior Height	6'8"	6'8"	6'8"	6'8"	6'8"	6'8"	6'8"	6'8"	6'8"	6'8"
Interior Width	8'	8'	8'	8'	8'	8'	8'	8'	8'	8'
Fresh Water Capacity w/Heater ¹⁰ (gal.)	34	34	38	43	44	45	45	45	37	37
Holding Tank Capacity ¹⁰ - Black / Gray (gal.)	39 / 32	32 / 39	39 / 29	39 / 29	39 / 29	31 / 39	31 / 39	31 / 39	36 / 29	31 / 39
LP Capacity ⁹ (gal.)	18	18	18	18	18	18	18	18	18	18
Fuel Capacity (gal.)	37	37	55	55	55	55	55	55	55	55
GCWR ⁷ (lbs.)	18,500	18,500	20,000 / 20,000 [◆]	18,500 [■] / 20,000 [□]	20,000	20,000	20,000	20,000	20,000	20,000
GVWR (lbs.)	10,700	10,700	14,050 / 14,050 [◆]	11,500 [■] / 14,050 [□]	14,050	14,050	14,050	14,050	14,050	14,050
GAWR - Front (lbs.)	4,600	4,600	4,600 / 4,600 [◆]	4,600 [■] / 4,600 [□]	4,600	4,600	4,600	4,600	4,600	4,600
GAWR - Rear (lbs.)	7,500	7,500	9,450 / 9,450 [◆]	7,810 [■] / 9,450 [□]	9,450	9,450	9,450	9,450	9,450	9,450
Wheelbase	138"	138"	158"	158"	158"	182"	190"	190"	220"	215"

◆ Ford® Diesel ■ Ford® Standard □ Ford® Optional

22E	22R	24F	24V	26A	27L	29B	29K	31T	32G	Automotive
S	S		S							Chassis – Ford® E350 6.8L Super-Duty V10 SOHC Triton® engine, 306-hp, automatic 4-speed overdrive transmission (5-speed transmission, Fall 2004), 4-wheel anti-lock brakes, 130-amp. alternator, dual airbags
		S	0	S	S	S	S	S	S	Chassis – Ford® E450 6.8L Super-Duty V10 SOHC Triton® engine, 306-hp, automatic 4-speed overdrive transmission (5-speed transmission, Fall 2004), 4-wheel anti-lock brakes, 130-amp. alternator, dual airbags
			0							Chassis – Ford® E450 6.0L Power Stroke® diesel engine, 235-hp, automatic 5-speed overdrive transmission, 4-wheel anti-lock brakes, 130-amp. alternator, dual airbags
				0	0	0	0	0	0	Air Springs auxiliary rear
S	S	S	S	S	S	S	S	S	S	Tire spare, Tire Tool wrench, Trailer Hitch † 5,000-lbs. draw bar/350-lbs. maximum vertical tongue weight & wiring, Wheelcovers stainless steel (4)
0	0	0	0	0	0	0	0	0	0	Wheel Liners stainless steel (4)

22E	22R	24F	24V	26A	27L	29B	29K	31T	32G	Cab Area & Driver Conveniences
S	S	S	S	S	S	S	S	S	S	Beverage Holder Trimline®, Cab Seats (fabric) w/3-point adjustable seat belts, armrest, lumbar support, multi-adjustable slide/recline, Cigarette Lighter /12-Volt Powerpoint , Cruise Control , Curtain cab divider & bunk privacy; Domelights (2); Floor Mats rubber, driver & passenger, Hood Release , Mirrors exterior, manual adjust, Power Door Locks w/remote, driver & passenger, Power Windows , Monitor System rearview, cable ready, Rearview Mirror adjustable, Steering Wheel tilt w/power assist, Sunvisors (2), Trim Panel driver & passenger doors
0	0	0	0	0	0	0	0	0	0	Cab Seats UltraLeather HP™
0	0	0	0	0	0	0	0	0	0	Instrument Panel Appliqué brushed pewter
0	0	0	0	0	0	0	0	0	0	Mirrors exterior electric remote w/defrost
0	0	0	0	0	0	0	0	0	0	Monitor System rearview, w/single camera

22E	22R	24F	24V	26A	27L	29B	29K	31T	32G	Entertainment
S	S	S	S	S	S	S	S	S	S	AM/FM (Cab) AM/FM/stereo, cassette/CD w/weather band, speakers (4), remote controls (2) one hand-held, one mounted on steering wheel, Radio Power Switch main/auxiliary, Satellite System Ready, TV Enhancement Package antenna (amplified), 12-volt DC powerpoint(s), interior jack(s), coax wiring, cable input
		0	0	0	0	0	0	0	0	DVD/VCR Stereo Combo w/remote
0	0	0	0	0	0	0	0	0	0	Entertainment Center (Exterior) w/CD Player remote, DC receptacle, AC duplex receptacle, AM/FM radio, TV jack, radio antenna, removable TV table, speakers (2), lockable compartment

22E	22R	24F	24V	26A	27L	29B	29K	31T	32G	Entertainment
0	0	0	0	0	0	0	0	0	0	Home Theater Sound System † amplifier, receiver, DVD/VCR combo, recessed speakers (5), subwoofer
0	0	0	0	0	0	0	0	0	0	Radios (4) 2-way, docking port w/charger, multi-channel
0	0	0	0	0	0	0	0	0	0	Satellite Dish Antenna RV digital, elevation sensing unit, manual
0	0	0	0	0	0	0	0	0	0	TV 13" Color 12-Volt DC & DVD † w/remotes, front lounge/dinette area w/slide/swivel shelf
							0			TV 20" Color AC Stereo † w/remote, video selection system, galley overhead cabinet, RCA®
							0			TV 24" Color AC Stereo † w/remote, video selection system, RCA®

22E	22R	24F	24V	26A	27L	29B	29K	31T	32G	Interior
S	S	S	S	S	S	S	S	S	S	Bunk front overhead w/mattress, sliding side windows, privacy curtain, bunk ladder, storage cabinet, Ceiling fabric, Cupholders , Light † decorative dining, Lights ceiling, incandescent w/wall switches; Roof Vent nonpowered;† front overhead bunk;† Shades bedroom, day/night (lounge, dinette, bedroom), mini blinds (bath, galley)
0	0	0	0	0	0	0	0	0	0	Bunk Window front† delete
		S		S		S		S		Mirror
		S		S		S		S		Roof Vent nonpowered, lounge
0	0	0	0	0	0	0	0	0	0	Roof Vent powered, ventilator fan;† front overhead bunk† or lounge
S	S	S	S	S						Wardrobe Cabinet carpeted shelf, clothes rod, mirrored door(s)
0	0	0	0	0	0	0	0	0	0	Windows flush-mounted, dual-glazed/thermo-insulated†

22E	22R	24F	24V	26A	27L	29B	29K	31T	32G	Cabinetry
S	S	S	S	S	S	S	S	S	S	Portsmouth Oak stile-and-rail construction w/raised-panel inserts on upper doors & flat-panel inserts on lower doors

22E	22R	24F	24V	26A	27L	29B	29K	31T	32G	Countertops
S	S	S	S	S	S	S	S	S	S	Laminate w/T-molded edge

22E	22R	24F	24V	26A	27L	29B	29K	31T	32G	Floorcovering
S	S	S	S	S	S	S	S	S	S	Carpeting w/pad, Vinyl main entry, bath & galley

22E	22R	24F	24V	26A	27L	29B	29K	31T	32G	Furniture
S	S	S	S	S	S	S	S	S	S	Dinette access to storage below
				0						Dinette (Rear) † L-shaped
				0						Dinette U-shaped w/access to storage below, slideout baskets
				S	S	S				Lounge Chair w/swivel/slide
S	S	S					S	S	S	Sofa

22E	22R	24F	24V	26A	27L	29B	29K	31T	32G	Furniture
				0	0					Sofa w/2 pedestal tables

22E	22R	24F	24V	26A	27L	29B	29K	31T	32G	Galley
S	S	S	S	S	S	S	S	S	S	Faucet single-control, Microwave Oven Samsung® Range 3-burner w/oven, Magic Chef ® Refrigerator/Freezer double-door, Norcold;† Sink recessed, molded, double w/sink cover (countertop material), Wall Border
								S		Cabinet TV overhead
S	S		S	S	S	S	S	S	S	Countertop flip-up extension
S			S	S	S	S	S	S	S	Pantry
										Range Hood ductless w/light & fan
S	S	S	S	S	S	S	S	S	S	Range Hood vented w/light & fan, graphic appliqué
0	0	0	0	0	0	0	0	0	0	Water Purification System

22E	22R	24F	24V	26A	27L	29B	29K	31T	32G	Bath
S	S	S	S	S	S	S	S	S	S	Cabinet lavatory, Cabinet medicine, Faucet (lavatory) dual-control, Faucet (shower) dual-control w/flexible showerhead, Roof Vent power, Shower light & skylight, Tissue Holder , Toilet w/foot-pedal flush & sprayer, Towel Rack 3-rod, mounted to door
S	S					S	S	S		Mirror
S	S	S	S	S	S	S	S	S	S	Shower Door folding
					0	0	0	0	0	Shower Door glass
						S	S			Sink oval
S	S	S	S			S	S			Sink rectangular w/molded soap dishes
S	S	S	S	S	S	S	S	S	S	Towel Bar
S	S	S	S	S	S	S	S	S	S	Towel Ring
S	S	S	S	S	S	S	S	S	S	Clothes Rod removable

22E	22R	24F	24V	26A	27L	29B	29K	31T	32G	Bedroom
				S	S					Bed Serta® queen
						S	S	S	S	Bed Serta® queen, w/underbed storage
								0		Beds twin, w/underbed storage
						S	S	S	S	Bedsprad pillow shams, pillows
						S	S	S	S	Light (s) decorative wall lamp(s)
						S	S	S	S	Nightstand (s) w/drawer(s)
						S	S	S	S	Roof Vent nonpowered
			S					0		Shirt Closet
								S	S	TV Shelf
										Vanity Cabinet w/flip-up countertop, stool w/removable seat cushion for storage inside
						S	S	S	S	Wardrobe Cabinet (s) w/drawers

22E	22R	24F	24V	26A	27L	29B	29K	31T	32G	Exterior
S	S	S	S	S	S	S	S	S	S	Awning Rails w/rain gutters, Door entrance w/separate screen door, deadbolt lock, Entrance Door Step(s) manual, Exterior Graphics Lago Blue Metallic, Ladder , Light porch w/interior switch, Mirrors manual adjust w/conconv, Mudflaps rear, Receptacle AC duplex, Running Boards aluminum, Sidewalk Skin one-piece smooth fiberglass, Storage Compartment w/carpeted trunk liner, KeyOne® system
0	0	0	0	0	0	0	0	0	0	Awning patio, vinyl
0	0	0	0	0	0	0	0	0	0	Deluxe Graphics Package Glacier Green Metallic w/fiberglass running boards
0	0	0	0	0	0	0	0	0	0	Entrance Door Step(s) electric w/doorjamb switch
				S						Trunk AC duplex receptacle, DC receptacle, shelves, storage baskets, storage hooks, TV antenna jacks
22E	22R	24F	24V	26A	27L	29B	29K	31T	32G	Systems
S	S	S	S	S	S	S	S	S	S	Auxiliary Start Circuit, Battery (Coach) Group 24 deep-cycle, Battery (Coach) disconnect system, Battery Charge Control automatic dual, Drain 1 water tank, Dump Valve manual, Electrical Distribution System DC fuses, AC breakers, 45-amp. electronic converter/charger, Generator Prep Kit, Monitor Panel wall-mount, battery condition gauge, generator hourmeter gauge, generator start/stop switch, holding tank levels, LP tank level, water heater light(s), water heater switch, water pump switch, water tank level, Power Cord 30-amp., 25', Sewer Hose 10'; stores in drain valve compartment, Tank LP, permanent mount w/gauge, FIRELEVEL holding tank monitoring system, Water Heater 6-gallon, electronic ignition, LP gas, Water System Winterization Package water heater bypass valve & siphon tube, Water Hookup city, Water Pump demand, Water Tank Fill gravity w/locking door
S	S	S	S							Air Conditioner (Roof) 13,500 BTU, ceiling-ducted w/wall thermostat
				S	S	S	S	S	S	Air Conditioner (Roof) 14,800 BTU, ceiling-ducted w/wall thermostat
0	0	0	0	0	0	0	0	0	0	Batteries (Coach) (2) Group 24-deep cycle
0	0	0	0	0	0	0	0	0	0	Drainage System ®4 heated, electric, one heat pad per tank, pipe wraps & lighted on/off switch next to monitor panel
S	S	S	S							Furnace 25,000 BTU, low-profile
				S	S	S	S	S	S	Furnace 30,000 BTU, low-profile
	0									Generator 3,600 watt, Onan® MicroQuiet™, LP
0	0	0	0	0	0	0	0	0	0	Generator 4,000 watt, Onan® MicroQuiet™, gas
0	0	0	0	0	0	0	0	0	0	Heat Pump w/roof A/C

22E	22R	24F	24V	26A	27L	29B	29K	31T	32G	Systems
0	0	0	0	0	0	0	0	0	0	Inverter DC/AC, 300-watt
										Wash Station exterior, w/pump switch
22E	22R	24F	24V	26A	27L	29B	29K	31T	32G	Slideouts
		S								Slideout Room front sofa/wardrobe w/slideroom cover
						S	0			Slideout Room front sofa w/slideroom cover
						S	S			Slideout Room rear bed w/slideroom cover
				S	S					Slideout Room front dinette w/slideroom cover
								S		STOREMORE® Slideout Room sofa/range w/slideroom cover
								S		STOREMORE® Slideout Room sofa/dinette w/slideroom cover
22E	22R	24F	24V	26A	27L	29B	29K	31T	32G	Safety
S	S	S	S	S	S	S	S	S	S	Airbags driver & passenger, Assist Handle exterior, Assist Bar interior entrance, Brake Light high-mount, Bumpers front & rear, Child Seat Tether Anchor dinette, Detectors/Alarms LP leak, smoke, carbon monoxide, Fire Extinguisher 10 B.C., Ground Fault Interrupter , Light center high-mount stop lamp, Light(s) courtesy w/wall switch(es), Seat Belts cab, 3-point, Seat Belts lap (in selected areas)
				S	S	S	S	S	S	Window escape
22E	22R	24F	24V	26A	27L	29B	29K	31T	32G	Warranty*
S	S	S	S	S	S	S	S	S	S	12-month/15,000-mile basic limited warranty 36-month/36,000-mile warranty on structure; 10-year limited parts & labor warranty on roof skin [†]

- The height of each model is measured to the top of the tallest standard feature and is based on the curb weight of a typically equipped unit. The actual height of your vehicle may vary by several inches depending on chassis or equipment variations. Please check with your dealer for further information.
- Spirit floorplans feature a wide-body design — over 96". In making your purchase decision, you should be aware that some states restrict access on some or all state roads to 96" in body width. Before making your purchase decision, you should confirm the road usage laws in the states of interest to you.
- The load capacity of your motor home is designated by weight, not by volume, so you cannot necessarily use all available space when loading your motor home.
- Not all items available in combination. See dealer for details.
- Capacities shown are tank manufacturer's listed water capacity (W.C.). Actual filled LP capacity is 80% of listing due to overfilling prevention device on tank.
- Not available in Canada.
- Actual towing capacity is dependent on your particular loading and towing circumstances which includes GVWR, GAWR, and GCWR as well as adequate trailer brakes. Please refer to the Operator's Manual of your vehicle for further towing information.
- See separate chassis warranty details provided in owner's packet.
- See your dealer for complete warranty information.
- Capacities are based on measurements prior to tank installation. Slight capacity variations can result due to installation applications.

NA Not Available
S Standard
0 Optional

Winnebago Industries® continuing program of product improvement makes specifications, equipment, model availability and prices subject to change without notice. Comparisons to other motor homes are based on the most recent information available.

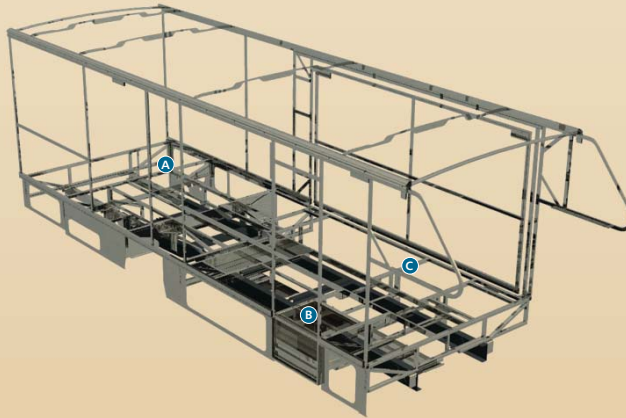


Not all motor homes are created equal. SuperStructure® is the term given to Winnebago Industries' structural motor home design and construction. Rather than a single component, it is the culmination of design integration that incorporates steel and aluminum sub-structures, composite-design laminated floor risers, interlocking joint technology and Thermo-Panel® floor, roof and sidewalls to form an incredibly strong, durable vehicle body.

A Tubular risers feature a truss design core for superior strength and provide a stable base for the floor structure and storage compartments.

B Critical steel components are treated with an advanced electrodeposition coating process that provides superior corrosion protection.

C The foundation substructure maximizes longitudinal and cross-coach support.



making a stronger and more durable body than competitor designs that require screws to carry the weight.

Interlocking joint construction utilizes advanced aluminum structural components to create integrated floor-to-sidewall and sidewall-to-roof joints. This design effectively distributes the weight of the walls and roof,

We invented Thermo-Panel® sidewall construction and, over the years, have perfected this innovative composite construction process. It combines an exterior fiberglass panel, high-density block foam insulation and welded aluminum support structures to create some of the strongest, most durable and lightweight sidewalls in the industry.

Built to a higher standard. The Spirit features a crowned, one-piece fiberglass roof, backed with a 10-year limited parts-and-labor roof skin warranty. Fiberglass offers superior strength, attractiveness and durability over the rubber roofs found on many competitive models which can chalk, streak and degrade over time. Fiberglass also provides increased puncture and tear resistance.



1-year-old Itasca fiberglass roof



1-year-old competitor's rubber roof



Committed to service. We back our motor homes with the industry's best service after the sale.

- 12-month/15,000-mile basic limited warranty
- 36-month/36,000-mile warranty on structure
- Standard 10-year limited parts-and-labor roof skin warranty
- Complimentary 24-hour roadside assistance program
- TripSaver Fast Track Parts. TripSaver guarantees that in-stock warranty parts ship directly to your dealer within 24 hours.
- National dealer service network



Recognized quality. Recreation Vehicle Dealer Association members annually rate RV manufacturers on the quality of their products, and sales and service support. Winnebago Industries has achieved the coveted Quality Circle award every year since its inception, the only RV manufacturer to do so.



WARNING: Joining WIT has been known to cause excessive fun. Winnebago-Itasca Travelers (WIT) is a club for owners of Winnebago Industries motor homes. WIT is a great way to meet people and offers you:

- Caravans and rallies
- Local and state group activities
- RV travel benefits

winnebagoind.com
NYSE listing: WGO

For Sales and Service Information Contact:



©2004 Winnebago Industries, Inc.



Printed in USA

Seat belts are your most important hookup. Always buckle up.