



# KODIAK



**LIGHT ON WEIGHT, HEAVY ON FEATURES**



**YES, IT HAS  
THAT!**

As a leader in ultralight technology, Kodiak offers an innovative, aerodynamic profile for easier towing and better fuel economy. But just because you can tow a Kodiak with an SUV, crossover, mini-van or light truck, it doesn't mean you'll be lacking amenities. Every Kodiak we build is packed full of modern interiors, features and conveniences to improve your camping experience.

**KODIAK**

**LIGHT | HEAVY**  
**ON WEIGHT | ON FEATURES**

**KODIAK ULTIMATE**



**KODIAK ULTIMATE BEDROOM**





KODIAK ULTIMATE 279RBSL | CELEBRATION

### IDEAL KITCHEN

Our feature-rich kitchen offers all the conveniences of home. Expansive solid-surface countertops, modern island, stainless steel appliances, high-power microwave, sink cover, high neck faucet with convenient sprayer, and so much more!

### STORAGE

Premium shelving and storage capacity in our pantry, cabinets and drawers provide plenty of room for all your necessities.







## **PICTURE PERFECT AMENITIES**

**Connecting you to the outdoors through larger window views.**

- ▶ Enjoy the outdoors even more with the largest windows offered in the travel trailer market.
- ▶ Tinted safety glass windows and nightshades give you options, day or night.
- ▶ The handy microwave, three burner cooktop with oven, range hood and fan light offer everything you need for whipping up meals or a yummy snack.
- ▶ Sunlight is maximized with skylights in all bathrooms and kitchens.
- ▶ Large folding grab handle, black tank flush, and exterior spray ports provide the utmost convenience in Express.





# KODIAK



## CONVENIENCE COUNTS

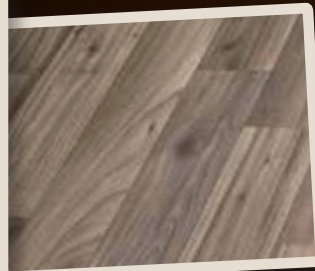
### QUALITY APPLIANCES

Stainless steel appliances—standard in our units—boast a long life span, are easy to maintain, keep clean and look beautiful.



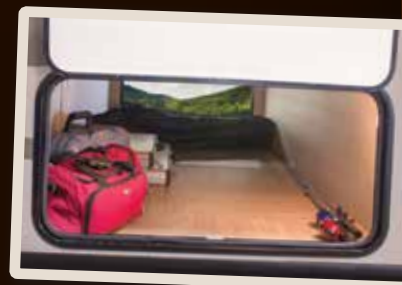
### 7-YEAR WARRANTY

Beauflor® Flooring offers durability and style for years of enjoyment.



### BEAR CAVE STORAGE

We maximized the Kodiak's storage area and made it 40% larger than the competition. More space means even more room to bring it all!



### LED POWER AWNING

Our LED power awning provides maximum lighting during evening camping stays.



KODIAK EXPRESS 264RLSL | SABLE



KODIAK EXPRESS 264RLSL | SABLE



KODIAK EXPRESS 303BHSL | CELEBRATION



**KODIAK EXPANDABLE**



## **EXPANDING YOUR OPTIONS**

Kodiak Express offers the best in maximized modern living space. Combine all the conveniences, styles and craftsmanship of the conventional lightweight Kodiak with handy expandable sleeping spaces, and you've just expanded your camping options.







KODIAK EXPRESS EXPANDABLE 206ES | MINERAL



KODIAK EXPRESS EXPANDABLE 206ES | MINERAL

## BROADENING YOUR HORIZONS

### DURABLE TENT CONSTRUCTION

With a 7-year tent warranty, our mold resistant, double-stitched AquaShield Aqualon material doesn't stretch, shrink or crack, giving you long-lasting durability in any weather condition.



### DINING VERSATILITY

With our oversized dinettes and expansive seating areas, enjoy more meals around more family in your Kodiak Express.

### SWEET DREAMS

There's room for everyone with our multiple family and guest-friendly sleeping options. From our spacious tent beds to the optional tri-fold sofa bed, Kodiak Express offers everything you need for a good night's rest.

### RESIDENTIAL CABINETRY

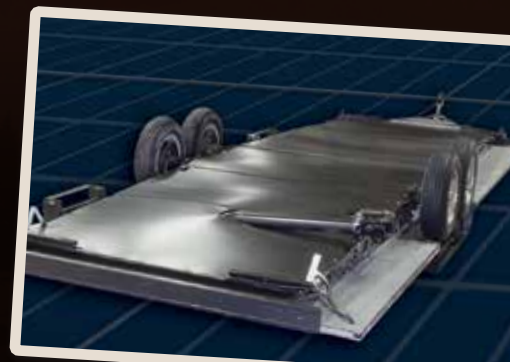
Kodiak's deep storage drawers with steel roller ball bearing guides and dedicated pots and pans storage are all encased in beautiful maple-cherry glazed cabinets.

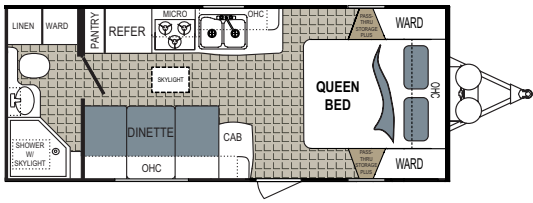
### STORAGE GALORE

Our huge pantry and over-sized wardrobe enable you to bring the things you need for an extended stay on the road.

### ENCLOSED & HEATED UNDERBELLY

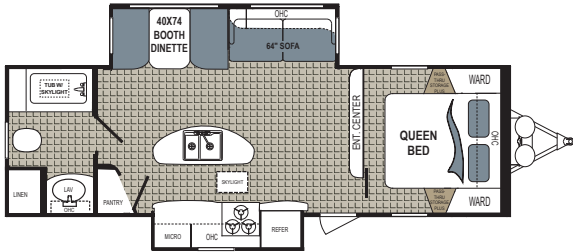
Our fully enclosed and heated underbelly protects your investment from the elements, road debris and rodents.





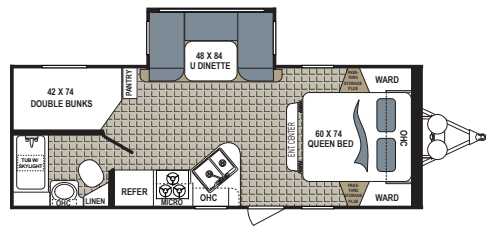
**KODIAK | 200QB**

Ext. Length: **24' 2"** Ext. Height: **10' 1"** Average Shipping Weight: **3,934** Sleeps: **2-3**



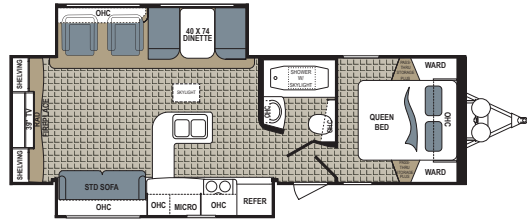
**KODIAK | 279RBSL**

Ext. Length: **30' 8"** Ext. Height: **10' 10"** Average Shipping Weight: **6,088** Sleeps: **3-5**



**KODIAK | 240BHSL**

Ext. Length: **27'** Ext. Height: **10' 10"** Average Shipping Weight: **4,951** Sleeps: **4-6**



**KODIAK | 291RESL**

Ext. Length: **32' 4"** Ext. Height: **11' 1"** Average Shipping Weight: **6,401** Sleeps: **4-6**

**ROOF**

- ▶ Dutchmen uses 5" thick truss-style, high-strength aluminum frame construction.
- ▶ The fully welded aluminum tubular framed roof offers strength and sustainability, with lasting appeal for years.
- ▶ TPO Roof system ensures exceptional resistance to ultraviolet, ozone and chemical exposure, backed by a 12-year manufacturer's warranty.
- ▶ High-density structural foam provides superior structural strength and reduces weight for easier towing.

**WALL**

- ▶ High-gloss fiberglass exteriors provide a long-lasting appeal.
- ▶ Welded aluminum tubular framed walls give Kodiak a lightweight, durable structure.
- ▶ High-density structural foam insulation provides superior insulation and reduces weight for easier towing.
- ▶ Constructed of durable, high-impact ABS plastic, your fender skirts curve underneath your Kodiak for ultimate protection.
- ▶ Designed to be towed by light trucks and sports utility vehicles, Kodiak's aerodynamic profile pushes air up the front wall and over the roof, improving towing ease and fuel economy.

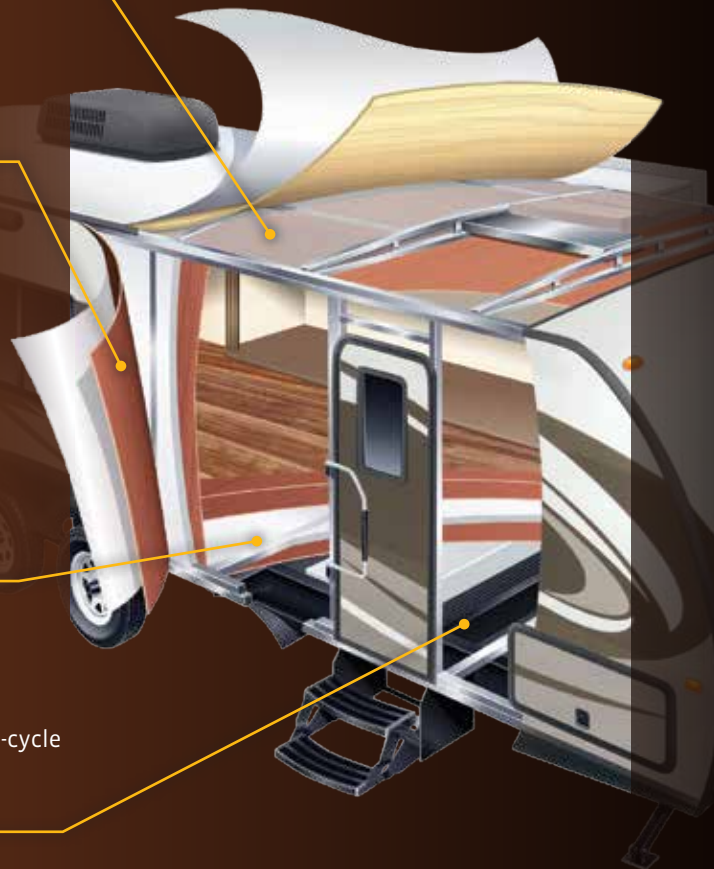
**FLOOR**

- ▶ Dutchmen's resilient Beauflor® flooring surface is backed with a 7-Year Warranty to ensure durability and your satisfaction for the long haul.
- ▶ We include high density structural foam for improved performance.
- ▶ Each Kodiak's PolyPly waterproof vapor barrier floor surface has passed a 3-cycle and 24-hour soak test for leak-proof reliability and your peace of mind.

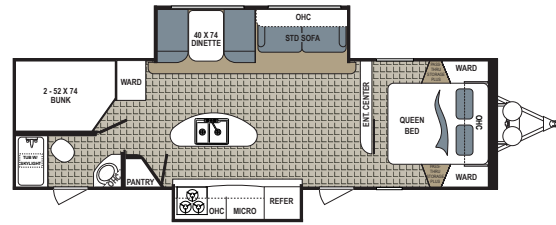
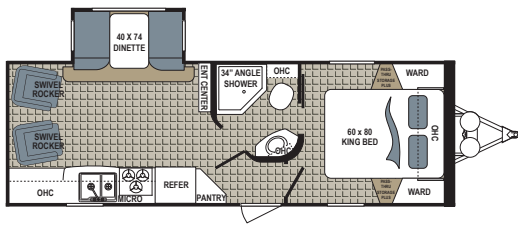
**CHASSIS**

- ▶ Four corner stabilizer jacks make every spot the perfect camping spot.
- ▶ We boast the strongest frame found in a travel trailer, with fully extended and welded outriggers for added support and durability.

**DUTCHMEN CONSTRUCTION**





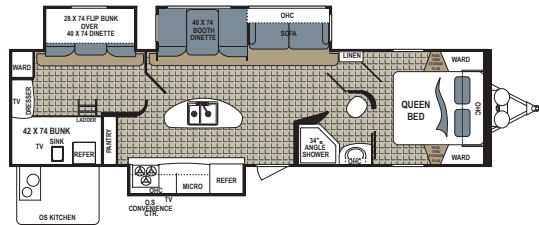


### KODIAK | 252RLSL

Ext. Length: **TBD** Ext. Height: **TBD** Average Shipping Weight: **TBD** Sleeps: **2-3**

### KODIAK | 276BHSL

Ext. Length: **33' 9"** Ext. Height: **10' 11"** Average Shipping Weight: **6,449** Sleeps: **6-7**



### KODIAK | 300BHSL

Ext. Length: **36' 11"** Ext. Height: **10' 11"** Average Shipping Weight: **7,508** Sleeps: **7-8**

## ULTIMATE DÉCOR

### SABLE



### MINERAL



### CELEBRATION



## KODIAK ULTIMATE STANDARDS AND OPTIONS

### MANDATORY OPTIONS

- 2nd A/C Prep w/50 AMP Service (Select Models Only)
- 14" Aluminum Rims (15" on Select Models)
- 29" LED Flat Screen TV (Select Models Only)
- 32" LED Flat Screen TV (Select Models Only)
- 39" LED Flat Screen TV (291 Only)
- Black Tank Flush
- Heated and Enclosed Underbelly
- LED Power Awning
- Power Tongue Jack with Docking Light
- Radial Tires
- Solid Surface Countertop
- Stainless Steel Appliances
- Tri-Fold Sleeper Sofa (Select Models Only)
- Ultimate Package

### EXTERIOR OPTIONS

- 15k BTU A/C IPO 13.5k BTU
- CSA Construction & Seal
- Swing Out Grill
- State Seal
- Winterization (Mandatory Oct.-April)

### INTERIOR OPTIONS

- Freestanding Dinette IPO Booth (279, 291 & 298 Only)
- Theater Seats IPO Chairs (291 & 298 Only)

### ULTIMATE PACKAGE

- 12V Bath Exhaust Fan
- 13,500 BTU Ducted A/C
- 20 lb LP Bottles w/Cover
- 6 Cubic Foot Double Door Refer
- 6 Gallon Gas/Electric DSI Water Heater

### Adjustable Power Awning w/LED Lights

### AM/FM/CD/DVD Stereo w/Bluetooth

### Bear Cave Storage

### Bedroom TV Hookup w/Backer

### Cable TV Hookup w/Booster

### Central Control Station

### Diamond Plate Front Rock Guard

### Easy Lube Axles

### Exterior Spray Port

### Fire Extinguisher

### Frameless Dark Tinted Safety Glass Window

### Front & Rear Stab Jacks

### High Output Furnace

### High Rise Pull-Out Faucet

### Kitchen & Bath Skylight

### Wood Plank style Beauflor™

### Large Folding Grab Handle

### LP Quick Disconnect

### Medicine Cabinet w/Mirror

### Microwave

### Night Shades Throughout

### Outside Speakers

### Porcelain Toilet

### Range Hood with 12V Fan/Light

### Sink Cover

### Slam Latch Baggage Doors

### Smoke, LP Leak, & Carbon Monoxide Detectors

### Spare Tire, Carrier & Cover

### Three Burner Range Top w/Oven

### Tri-Chromatic Fiberglass

### Tub Surround

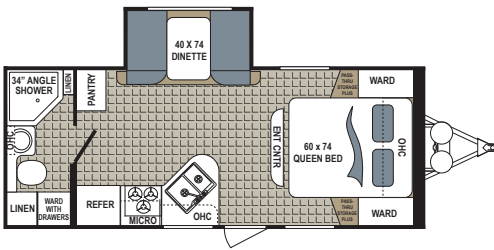
### TV Antenna

## KODIAK ULTIMATE SPECIFICATIONS

FLOORPLAN	DIMENSIONS			WEIGHTS (LBS.)			TANKS (GALS.)		
	*EXTERIOR TRAVEL LENGTH	EXTERIOR WIDTH	EXTERIOR HEIGHT (WITH A/C)	**AVERAGE SHIPPING WEIGHT	DRY HITCH WEIGHT	CARGO CARRYING CAPACITY	***FRESH WATER CAPACITY	GREY WATER CAPACITY	BLACK WATER CAPACITY
200QB	24' 2"	96"	10' 1"	3,934	314	1,466	52	39	28
240BHSL	27'	96"	10' 10"	4,951	594	1,649	52	39	28
252RLSL	TBD	TBD	TBD	TBD	TBD	TBD	TBD	TBD	TBD
276BHSL	33' 9"	96"	10' 11"	6,449	968	1,151	52	67	28
279RBSL	30' 8"	96"	10' 10"	6,088	792	1,512	52	67	28
291RESL	32' 4"	96"	11' 1"	6,401	704	2,499	52	56	28
300BHSL	36' 11"	96"	10' 11"	7,508	825	1,392	52	78	28

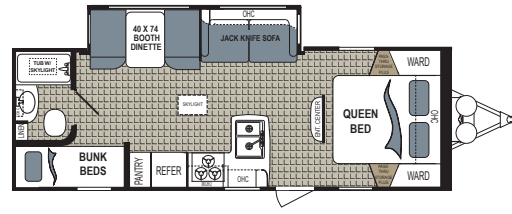
\*Length is defined as the distance from the centerline of hitch pin/coupler to rear bumper of trailer. \*\*Our weights represent how most units are built, inclusive of many commonly-ordered options. \*\*\*Fresh water capacity includes water heater capacity.

**DISCLAIMER:** Product information is as accurate as possible as of the date of publication of this brochure. All features, floorplans, and specifications in this brochure are subject to change without notice. Please also consult Dutchmen's website at [www.Dutchmen.com](http://www.Dutchmen.com) for more current product information and specifications. Tow Vehicle Disclaimer. **CAUTION:** Owners of Dutchmen recreational vehicles are solely responsible for the selection and proper use of tow vehicles. All customers should consult with a motor vehicle manufacturer or their dealer concerning the purchase and use of suitable tow vehicles for Dutchmen products. Dutchmen disclaims any liability or damages suffered as a result of the selection, operation, use or misuse of a tow vehicle. DUTCHMEN'S LIMITED WARRANTY DOES NOT COVER DAMAGE TO THE RECREATIONAL VEHICLE OR THE TOW VEHICLE AS A RESULT OF THE SELECTION, OPERATION, USE OR MISUSE OF THE TOW VEHICLE. REFERENCE DUTCHMEN MANUFACTURING OWNERS MANUAL FOR LIMITED WARRANTY DETAILS.



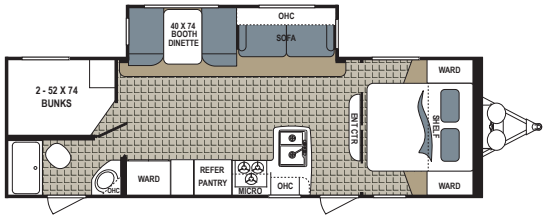
**KODIAK EXPRESS | 223RBSL**

Ext. Length: **25' 9"** Ext. Height: **10' 8"** Average Shipping Weight: **4,300** Sleeps: **2-4**



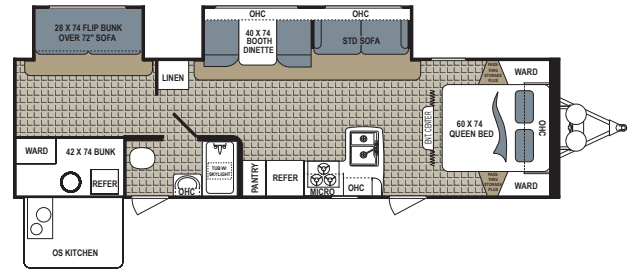
**KODIAK EXPRESS | 255BHSL**

Ext. Length: **28' 5"** Ext. Height: **10' 7"** Average Shipping Weight: **4,783** Sleeps: **4-6**



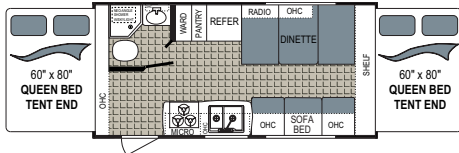
**KODIAK EXPRESS | 286BHSL**

Ext. Length: **31'** Ext. Height: **10' 10"** Average Shipping Weight: **5,353** Sleeps: **6-8**



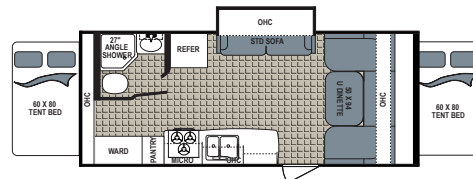
**KODIAK EXPRESS | 299BHSL**

Ext. Length: **34' 10"** Ext. Height: **10' 9"** Average Shipping Weight: **6,320** Sleeps: **6-8**



**KODIAK EXPANDABLE | 186E**

Ext. Length: **20' 5"** Ext. Height: **10'** Average Shipping Weight: **3,567** Sleeps: **4-6**



**KODIAK EXPANDABLE | 206ES**

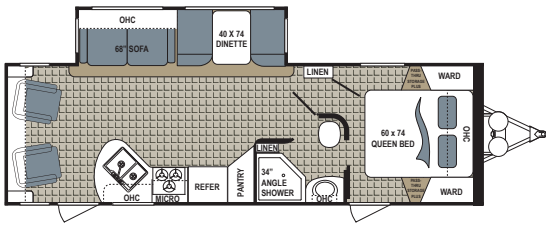
Ext. Length: **24' 6"** Ext. Height: **10' 1"** Average Shipping Weight: **4,278** Sleeps: **4-6**

**KODIAK EXPRESS SPECIFICATIONS**

MODEL	FLOORPLAN	DIMENSIONS			WEIGHTS (LBS.)			TANKS (GALS.)		
		*EXTERIOR TRAVEL LENGTH	EXTERIOR WIDTH	EXTERIOR HEIGHT (WITH A/C)	**AVERAGE SHIPPING WEIGHT	DRY HITCH WEIGHT	CARGO CARRYING CAPACITY	***FRESH WATER CAPACITY	GREY WATER CAPACITY	BLACK WATER CAPACITY
KODIAK EXPRESS	223RBSL	25' 9"	96"	10' 8"	4,300	516	1,700	52	39	28
	255BHSL	28' 5"	96"	10' 7"	4,783	526	1,817	52	39	28
	264RLSL	30' 10"	96"	10' 7"	5,560	667	2,040	52	39	28
	283BHSL	32'	96"	10' 7"	5,401	756	1,199	52	39	28
	286BHSL	31'	96"	10' 10"	5,353	743	2,247	52	78	28
	299BHSL	34' 10"	96"	10' 9"	6,320	759	1,280	52	39	28
	303BHSL	36' 8"	96"	10' 11"	7,410	832	1,490	52	67	28
EXPANDABLES	172E	18' 6"	96"	10'	3,161	284	689	52	39	28
	186E	20' 5"	96"	10'	3,567	357	1,433	52	39	28
	206ES	24' 6"	96"	10' 1"	4,278	566	2,322	52	39	28
	222ES	25' 11"	96"	9' 11"	4,508	605	2,092	52	39	28

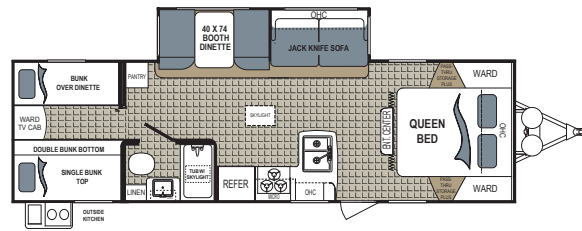
\*Length is defined as the distance from the centerline of hitch pin/coupler to rear bumper of trailer. \*\*Our weights represent how most units are built, inclusive of many commonly-ordered options. \*\*\*Fresh water capacity includes water heater capacity.





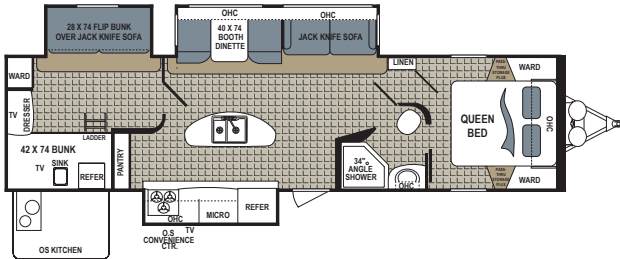
### KODIAK EXPRESS | 264RLSL

Ext. Length: **30' 10"** Ext. Height: **10' 7"** Average Shipping Weight: **5,560** Sleeps: **2-4**



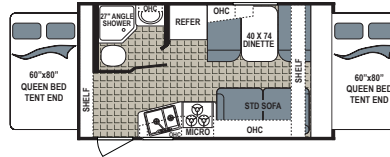
### KODIAK EXPRESS | 283BHSL

Ext. Length: **32'** Ext. Height: **10' 7"** Average Shipping Weight: **5,401** Sleeps: **6-8**



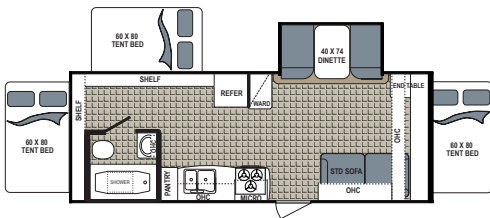
### KODIAK EXPRESS | 303BHSL

Ext. Length: **36' 8"** Ext. Height: **10' 11"** Average Shipping Weight: **7,410** Sleeps: **6-8**



### KODIAK EXPANDABLE | 172E

Ext. Length: **18' 6"** Ext. Height: **10'** Average Shipping Weight: **3,161** Sleeps: **4-6**

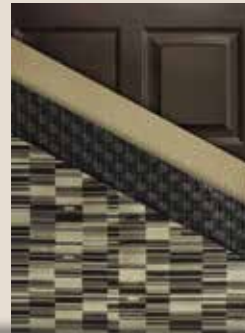


### KODIAK EXPANDABLE | 222ES

Ext. Length: **25' 11"** Ext. Height: **9' 11"** Average Shipping Weight: **4,508** Sleeps: **6-8**

## EXPRESS AND EXPANDABLE DÉCOR

### SABLE



### MINERAL



### CELEBRATION



## KODIAK EXPRESS STANDARDS AND OPTIONS

### MANDATORY OPTIONS

- 14" Aluminum Rims
- (15" Aluminum Rims Only on 303BHS)
- Black Tank Flush
- Express Package
- Heated and Enclosed Underbelly
- LED Power Awning
- Radial Tires
- Stainless Steel Appliances

### EXTERIOR OPTION

- 15k BTU A/C IPO 13.5k BTU

### INTERIOR OPTIONS

- 24" LED TV

- Tri-Fold Sleeper Sofa

### EXPRESS PACKAGE

- 12V Bath Exhaust Fan
- 13,500 BTU Ducted A/C
- 2 – 20 lb LP Bottles w/Cover
- 6 Cubic Foot Double Door Refrigerator
- 6 Gallon Gas/Electric DSI Water Heater
- Adjustable Power Awning
- AM/FM/CD/DVD Stereo
- Bedroom TV Hookup w/Backer
- Bear Cave Storage
- Black Tank Flush
- Cable TV Hookup w/Booster

- Central Control Station
- Diamond Plate Front Rock Guard
- Dark Tinted Safety Glass Windows
- Easy Lube Axles
- Exterior Spray Port
- Foot Flush Toilet
- Fire Extinguisher
- Front & Rear Stab Jacks
- Full Color Oyster Exterior
- High Output Furnace
- High Spout Faucet
- Kitchen & Bath Skylight
- Large Folding Grab Handle

- Large Tile Beauflor™
- Medicine Cabinet w/Mirror
- Microwave
- Night Shades Throughout
- Outside Speakers
- Oversized Baggage Doors
- Patio Light
- Range Hood with 12V Fan/Light
- Smoke, LP Leak, & Carbon Monoxide Detectors
- Spare Tire & Carrier
- Three Burner Range Top w/Oven
- Tube Surround
- TV Antenna

**DISCLAIMER:** Product information is as accurate as possible as of the date of publication of this brochure. All features, floorplans, and specifications in this brochure are subject to change without notice. Please also consult Dutchmen's website at [www.Dutchmen.com](http://www.Dutchmen.com) for more current product information and specifications. Tow Vehicle Disclaimer. **CAUTION:** Owners of Dutchmen recreational vehicles are solely responsible for the selection and proper use of tow vehicles. All customers should consult with a motor vehicle manufacturer or their dealer concerning the purchase and use of suitable tow vehicles for Dutchmen products. Dutchmen disclaims any liability or damages suffered as a result of the selection, operation, use or misuse of a tow vehicle. DUTCHMEN'S LIMITED WARRANTY DOES NOT COVER DAMAGE TO THE RECREATIONAL VEHICLE OR THE TOW VEHICLE AS A RESULT OF THE SELECTION, OPERATION, USE OR MISUSE OF THE TOW VEHICLE. REFERENCE DUTCHMEN MANUFACTURING OWNERS MANUAL FOR LIMITED WARRANTY DETAILS.

# LIGHT ON WEIGHT

# HEAVY ON FEATURES



## **Dutchmen—A North American Campground Classic**

Few manufacturers have built RVs for 25+ years, and only one has set the standard for innovation AND value. Dutchmen **IS** “A North American Campground Classic.”



# MORE STANDARD FEATURES MORE VALUE

Dutchmen RVs turn more heads on the lot and in the campground than any other. Why? While other manufacturers offer features as options, Dutchmen tends to make those same features standard. Call it “bang for the buck”, “more for your money”, or simply “more value”. **We’ve built a reputation for bringing RV owners more standard features for less money** over the years... and it’s a reputation we plan to keep.

# 300

## **STRONG**

### **NATION WIDE DEALER NETWORK**

300 Dutchmen dealers across North America and the Industry Leading Service Center in Goshen, Indiana, combine for your peace of mind before, during, and after the sale. Rest assured that no matter where your travels take you, **the best-resourced RV manufacturing company in the world is behind you all the way.**

Scan this QR Code for a  
**360 view**  
of the Kodiak interior.



**[www.dutchmen.com](http://www.dutchmen.com)**

Visit us online to see all of the Dutchmen brands, innovative models and spacious floorplans.

**From giving advice to servicing products, we consider our loyal dealers the best resource for learning about Dutchmen products.**

Your local dealer

