

ROCKWOOD GEO PRO

ROCKWOOD

GEO PRO

PROVIDING OUTDOOR FUN SINCE 1974.





Geo Pro Construction

▲ SUPERIOR CONSTRUCTION

- 1 6 Sided Full Aluminum Frame
- 2 Fully Laminated Walkable Roof
- 3 Aluminum Truss Roof Bracing
- 4 Automotive Glass Windshield (NA 15TB, 12SRK)
- 5 Fiberglass Front Cap W/ Clear Coat
- 6 Tinted Frameless Windows
- 7 Aluminum Floor Joists
- 8 5/8" Tongue & Groove Plywood Floor

▲ SAFETY STANDARDS

- 9 Dexter® Torsion Axles
- 10 MORryde® Solid And Supported Steps
- 11 TST Tire Pressure Monitor System
- 12 Nitrogen Filled Tires

▲ CLIMATE PROTECTION PACKAGE

- 13 Radiant Foil In Front Caps

▲ STANDARD FEATURES

- 14 12v Thermostatically Controlled Heated Tanks (NA 12SRK)
- 15 Maxxair® Fan W/ Cover (NA 12SRK)
- 16 Teton® All In One WiFi Booster/LTE Prep/Antenna
- 17 Back Up Camera Prep
- 18 Double 20# LP Tanks
- 19 Double Battery Boxes
- 20 Key Alike Locks & Coded Key Pad Entry Lock
- 21 Solar Prep On Side
- 22 190w Roof Solar Panels W/ 1000w Inverter (100W Solar Panel 12SRK)
- 23 Sport Tire And Wheel Package

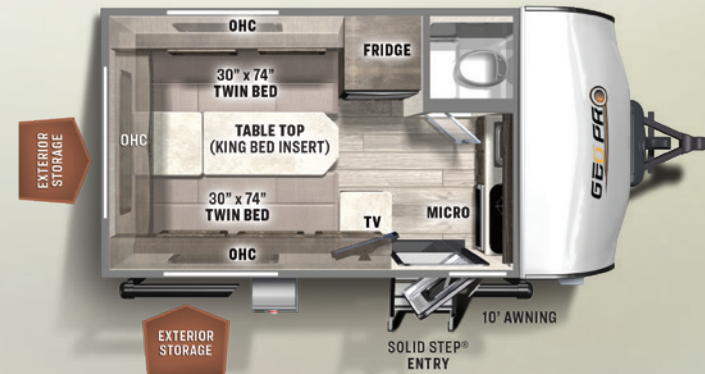
Modern Amenities & Styling

THE FLOOR PLAN YOU WANT IN THE SIZE YOU NEED. We have custom designed our trailers with the best in style and amenities while keeping your towing needs in mind. Modern, fresh interiors will almost make you forget you are in the great outdoors. Quality craftsmanship and attention to detail have been put into our Geo Pro travel trailers, all with you in mind.



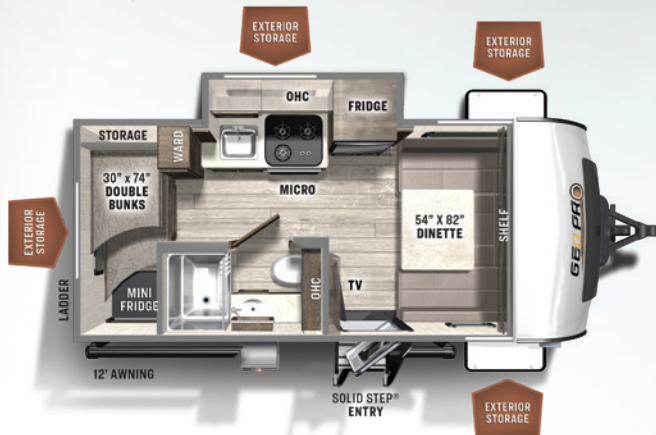
12SRK
REAR KITCHEN

UVW: 1763 HITCH: 258 AXLE: 1467 CCC: 1135 LENGTH: 12' 9" WIDTH: 7' 4"
HEIGHT: 7' 9" INT. HEIGHT: 4' 10" FRESH: 20 gal GRAY: 6 gal BLACK: NA



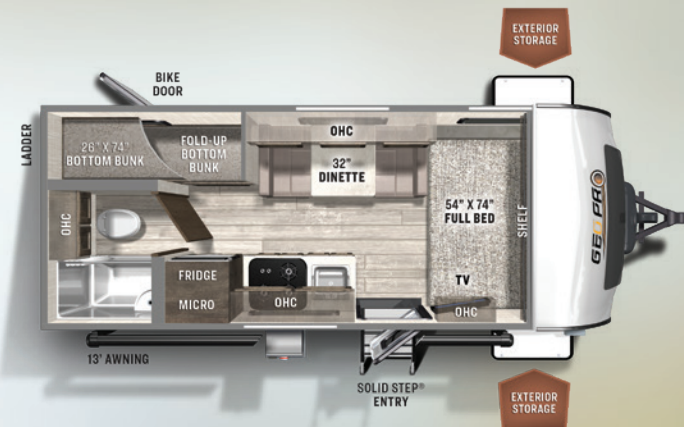
15TB
TWIN BED

UVW: 2667 HITCH: 357 AXLE: 2272 CCC: 1210 LENGTH: 16' 4" WIDTH: 7' 8"
HEIGHT: 9' 10" INT. HEIGHT: 6' 6" FRESH: 31 gal GRAY: 12 gal BLACK: 12 gal



16BH
BUNK HOUSE

UVW: 3280 HITCH: 486 AXLE: 2756 CCC: 1206 LENGTH: 19' WIDTH: 7' 8"
HEIGHT: 9' 10" INT. HEIGHT: 6' 6" FRESH: 31 gal GRAY: 30 gal BLACK: 30 gal



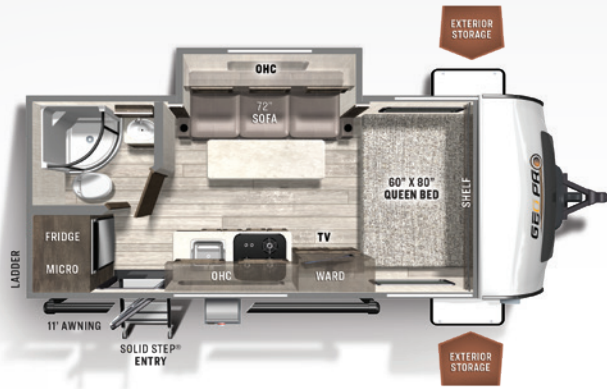
19BH
BUNK HOUSE

UVW: 3209 HITCH: 425 AXLE: 2746 CCC: 1216 LENGTH: 20' 8" WIDTH: 7' 8"
HEIGHT: 9' 10" INT. HEIGHT: 6' 6" FRESH: 31 gal GRAY: 30 gal BLACK: 30 gal



20FBS

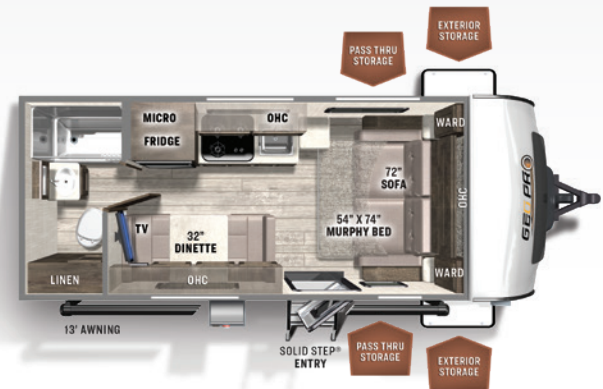




19FBS

FRONT BED

UVW: 3375 HITCH: 479 AXLE: 2858 CCC: 1104 LENGTH: 20' 8" WIDTH: 7' 8"
 HEIGHT: 9' 10" INT. HEIGHT: 6' 6" FRESH: 31 gal GRAY: 30 gal BLACK: 30 gal



19FD

MURPHY BED

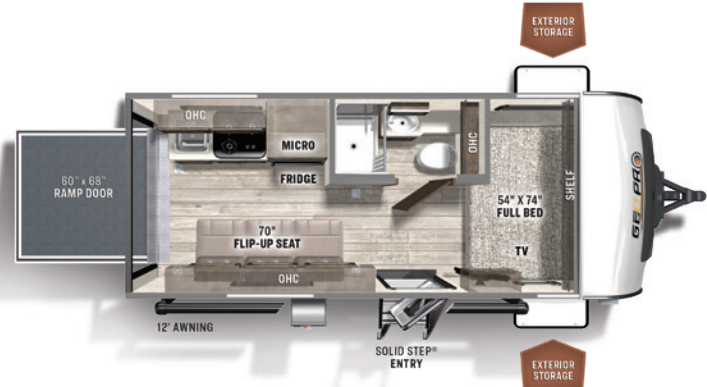
UVW: 3233 HITCH: 409 AXLE: 2786 CCC: 1176 LENGTH: 20' 8" WIDTH: 7' 8"
 HEIGHT: 9' 10" INT. HEIGHT: 6' 6" FRESH: 31 gal GRAY: 30 gal BLACK: 30 gal



19FDS

MURPHY BED

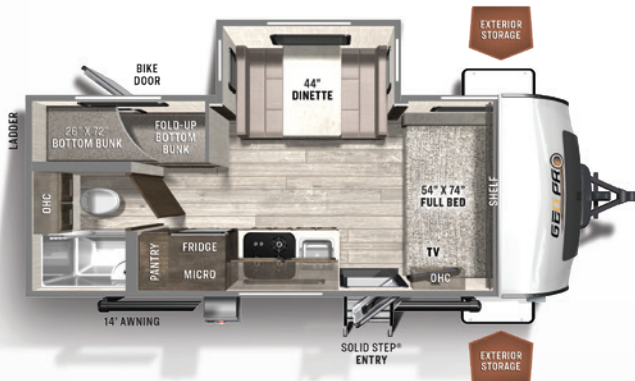
UVW: 3360 HITCH: 452 AXLE: 2870 CCC: 1092 LENGTH: 20' 8" WIDTH: 7' 8"
 HEIGHT: 9' 10" INT. HEIGHT: 6' 6" FRESH: 31 gal GRAY: 30 gal BLACK: 30 gal



19FBTH

TOY HAULER

UVW: 3433 HITCH: 581 AXLE: 2814 CCC: 1498 LENGTH: 20' 8" WIDTH: 7' 8"
 HEIGHT: 10' INT. HEIGHT: 6' 6" FRESH: 31 gal GRAY: 16 gal BLACK: 30 gal



20BHS

BUNK HOUSE

UVW: 3513 HITCH: 495 AXLE: 3014 CCC: 948 LENGTH: 21' 8" WIDTH: 7' 8"
 HEIGHT: 10' INT. HEIGHT: 6' 6" FRESH: 31 gal GRAY: 30 gal BLACK: 30 gal



20FBS

FRONT BED

UVW: 3442 HITCH: 400 AXLE: 3004 CCC: 958 LENGTH: 21' 8" WIDTH: 7' 8"
 HEIGHT: 10' INT. HEIGHT: 6' 6" FRESH: 31 gal GRAY: 30 gal BLACK: 30 gal

Rockwood Warranty. Our Promise.

FOR DETAILS ON ROCKWOOD'S COMPLETE WARRANTY PROGRAM, SEE YOUR ROCKWOOD DEALER. When it comes to backing products with the same quality and commitment it does when it begins the manufacturing process, the only name you have to remember when you're looking for a recreational vehicle is Rockwood. Rockwood offers the following additional limited warranties to the original purchasers. Consult written warranty for details.

1. Twelve-year vinyl roof warranty.
2. Two-year fiberglass warranty.
3. Ten-year Torflex® axle warranty.
4. One-year bumper to bumper warranty.



24/7 EMERGENCY ROADSIDE ASSISTANCE WITH VEHICLE PURCHASE*

TOWING
JUMP-STARTS
TIRE CHANGES
FLUID DELIVERY
LOCKOUT
SERVICE

WINCH-OUT
MOBILE MECHANIC
TECHNICAL
SUPPORT
DEALER LOCATOR
SERVICES



*VALID FOR 1 YEAR FROM DATE OF PURCHASE



PRE-DELIVERY INSPECTION FACILITY

20,000 square feet of quality assurance. The bare essentials for a premium product. This state-of-the-art facility gives immediate daily feedback to production for quality assurance in every unit built.

MONITOR YOUR RV FROM YOUR DEVICES

Your RV is equipped with OneControl. This WiFi app-based interface provides comfort and convenience to control and monitor your RV's functions. With the WeRV app you can control your lights, slides and awning from your fingertips.

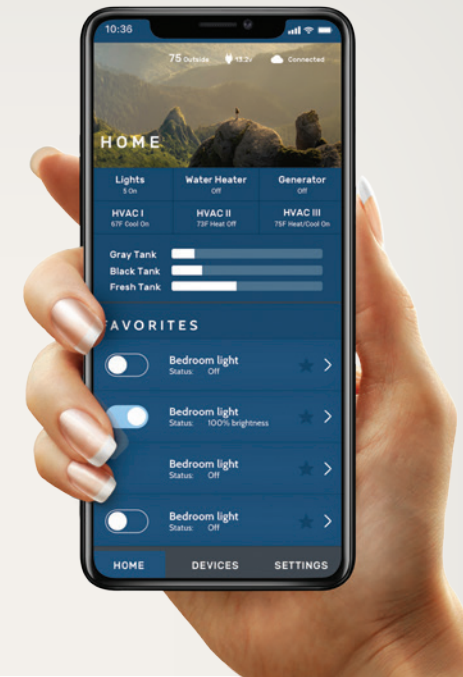
For a complete list of control capabilities, please visit Lippert.com/onecontrol

Whenever, wherever we make your experience better.



Scan for more information

Apple and App Store are registered trademarks of Apple Inc. Google Play and the Google Play logo are trademarks of Google LLC.



CUSTOMER SATISFACTION



www.ForestRiverBuyLocal.com

FREE MEMBERSHIP
to Forest River Owners' Group

www.forestriverfrog.com



Specification Definitions :: GVWR (Gross Vehicle Weight Rating) - is the maximum permissible weight of the unit when fully loaded. It includes all weights, inclusive of all fluids, cargo, optional equipment and accessories. For safety and product performance do NOT exceed the GVWR. // **GAWR (Gross Axle Weight Rating)** - is the maximum permissible weight, including cargo, fluids, optional equipment and accessories that can be safely supported by a combination of all axles. // **UVW (Unloaded Vehicle Weight)** - is the typical weight of the unit as manufactured at the factory. It includes all weight at the unit's axle(s) and tongue or pin and LP Gas. The UVW does not include cargo, fresh potable water, additional optional equipment or dealer installed accessories. *Estimated average based on standard build optional equipment. // **CCC (Cargo Carrying Capacity)**** - is the amount of weight available for fresh potable water, cargo, additional optional equipment and accessories. CCC is equal to GVWR minus UVW. Available CCC should accommodate fresh potable water (8.3 lbs per gallon). Before filling the fresh water tank, empty the black and gray tanks to provide for more cargo capacity. ** Estimated average based on standard build optional equipment. // Each Forest River RV is weighed at the manufacturing facility prior to shipping. A label identifying the unloaded vehicle weight of the actual unit and the cargo carrying capacity is applied to every Forest River RV prior to leaving our facilities. The load capacity of your unit is designated by weight, not by volume, so you cannot necessarily use all available space when loading your unit. // All information contained in this brochure is believed to be accurate at the time of publication. However, during the model year, it may be necessary to make revisions and Forest River, Inc., reserves the right to make all such changes without notice, including prices, colors, materials, equipment and specifications as well as the addition of new models and the discontinuance of models shown in this brochure. Therefore, please consult with your Forest River dealer and confirm the existence of any materials, design or specifications that are material to your purchase decision. Litho. U.S.A. FOR 1766 P&W: 2021.02.11

Look for our other popular lines of Rockwood trailers.



ROCKWOOD FIFTH WHEELS



ROCKWOOD TRAVEL TRAILERS



ROCKWOOD CAMPING TRAILERS



Learn More
Scan this barcode using a QR Reader on your smart phone to learn more about Forest River.



A Berkshire Hathaway company.

201 WEST ELM MILLERSBURG, IN 46543 WWW.FORESTRIVERINC.COM/ROCKWOOD 574.642.2640

YOUR **ROCKWOOD** DEALER



FOLLOW THE JOURNEY



Follow us on these media platforms @RockwoodRvs