

FREELANDER™

**Coachmen**
Coachmen RV is a Division of Forest River, Inc.



*Features & Value...
Built for the time of your life.*



FREELANDER™

INTERIOR FEATURES



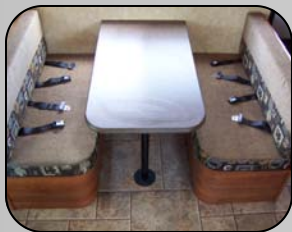
Crisp digital picture with the optional 20" LCD TV by Jensen® & DVD player. (opt.)



Enjoy peace of mind with our exclusive child safety net and convenient bunk ladder. (opt.)



The kids will enjoy comfort in their 74" bunk beds while the adults enjoy privacy with our solid pocket bedroom door. (32BH)



Every dinette provides safety & convenience with 4 seatbelts & flip up dinette storage.



Back up safely with our in dash flip out Jensen® LCD back up monitor. (opt.)



Store all of your utensils and trinkets in our exclusive & spacious island base cabinet drawers.



15" LCD TV's & DVD players in both bunks for digital TV, movies, and easy access AV ports for game systems. (opt.)



You will have abundant overhead, base cabinet, and pantry storage for weeks of camping & traveling. Our ample counter space also provides room for food preparation and serving.



Combine a spacious overhead bunk, a 74" flip out sofa, & a 70" dinette versatile for storage, or an extra sleeping area, & you will be able to enjoy the great outdoors with all of your family & friends!

FREELANDER™

EXTERIOR FEATURES



If you enjoy skiing or fishing, the Freelanders features gigantic pass through storage.



Firestone Ride Rite air bags will provide miles of comfortable & stable driving. (opt.)



Coachmen keeps it simple & easy with convenient access to your water connections, cable hookups, fuel fill, and dump valves



Along with massive storage compartments, the Freelanders provides easy access to all sides of your gear with doors on each side. Side hinged doors and latches on the compartments allow you to access your belongings without having to hold doors open.



Rest easy with your favorite music or rock the tailgate party with your optional outside entertainment center. It also provides a cable, 12V, & 110 plug in. (Left)
Our welded & bolted steel rear bumper will both protect your Freelanders and support all the important add-ons that you bring with you. Keep an eye on them with your rear vision camera! (Right)



30 QB Pictured



32 BH Pictured

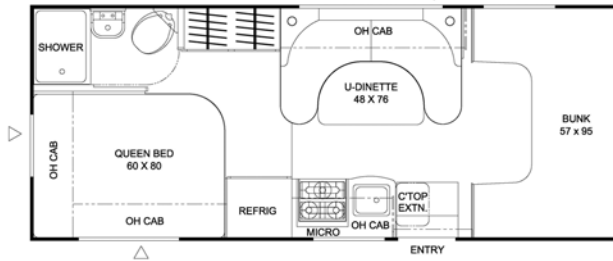
The Freelanders provides easy access to the cab area with aluminum running boards. Azdel Superlite™ sidewall material both, lightens the load & provides a smooth, durable fiberglass finish. Our standard slide-out awnings will keep rain and debris off the slides. At the end of the day, rest comfortably under the optional 12V power adjustable awning by A&E.

FREELANDER™



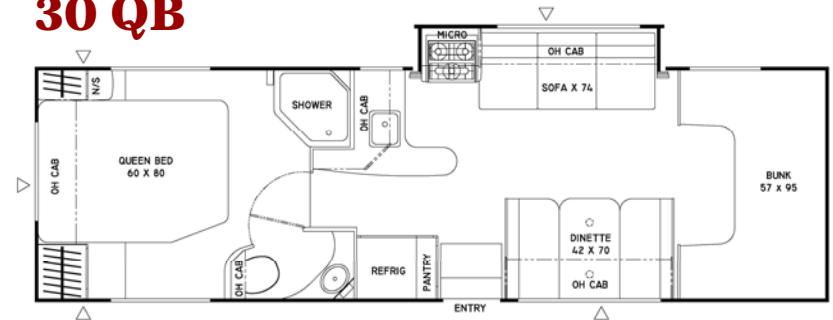
Coachmen RV is a Division of Forest River, Inc.

21 QB



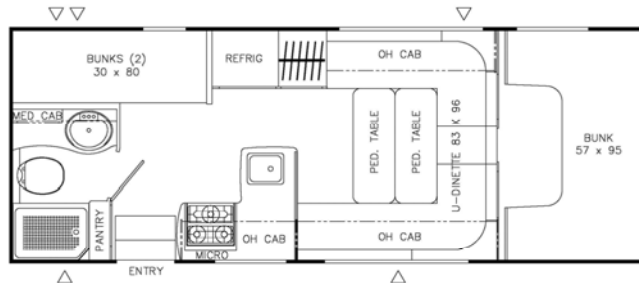
Comfortably sleeps 5 / 91 cu. ft. ext. storage / 71 cu. ft. int. storage

30 QB

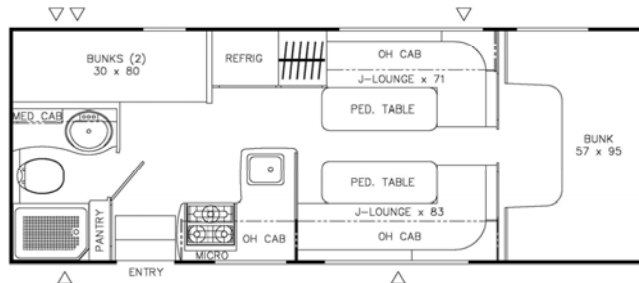


Comfortably sleeps 6 / 113 cu. ft. ext. storage / 76 cu. ft. int. storage

23 BB



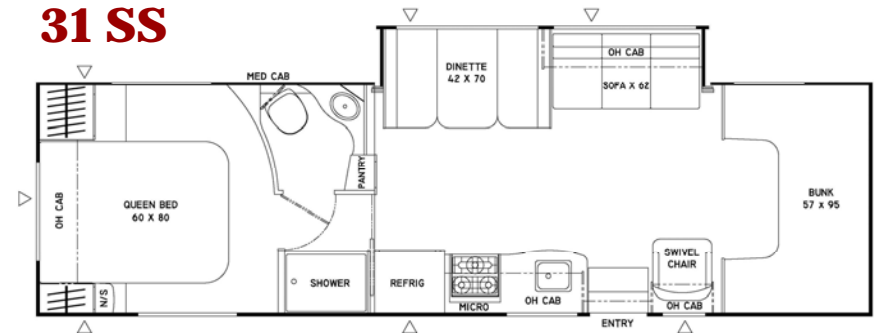
PARKED



TRAVEL

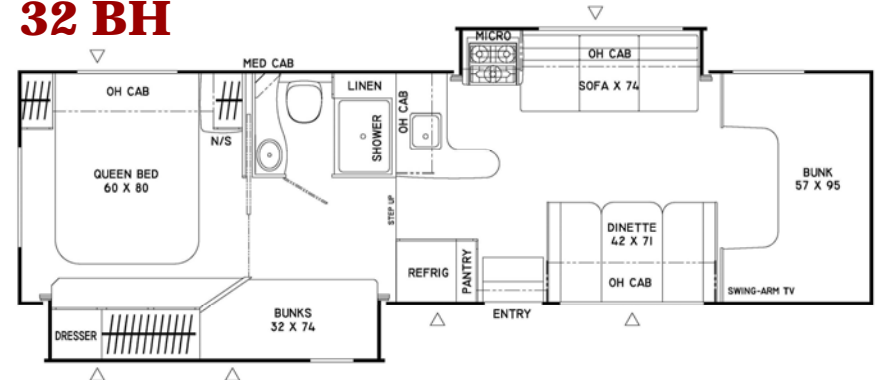
Comfortably sleeps 6 / 85 cu. ft. ext. storage / 79 cu. ft. int. storage

31 SS



Comfortably sleeps 6 / 100 cu. ft. ext. storage / 73 cu. ft. int. storage

32 BH



Comfortably sleeps 8 / 77 cu. ft. ext. storage / 124 cu. ft. int. storage

**Innovative.
Functional.
Well Built.
Affordable.**



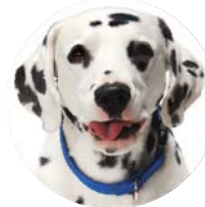
This advanced sidewall design features a high-gloss fiberglass exterior and AZDEL SuperLite™ composite substrate. This combines the good looks of a quality exterior with a lightweight, moisture-resistant substrate that won't rot or grow mold like wood.



SPECIFICATIONS

MODEL	21 QB	23 BB	30 QB	31 SS	32 BH
CHASSIS	CHEVY	FORD E450	FORD E450	FORD E450	FORD E450
ENGINE	6.0L / V8	6.8L / V10	6.8L / V10	6.8L / V10	6.8L / V10
HORSE POWER / TORQUE	300 / 360	305 / 440	305 / 440	305 / 440	305 / 440
TIRES	LT225/75R16E	LT225/75R16E	LT225/75R16E	LT225/75R16E	LT225/75R16E
GAWR FRONT	4300	5000	5000	5000	5000
GAWR REAR	8600	9500	9500	9500	9500
GVWR	12,300	14500	14500	14500	14500
UVW (APPROX. LBS.)	TBD	9798	11108	11618	12316
CCC (APPROX. LBS.)	TBD	4702	3392	2882	2184
UNIT LENGTH W/ HITCH	23'3"	25'1"	30'4"	31'11"	32'5"
HITCH WEIGHT (LBS.)	3500	5000	5000	5000	5000
LBS. OF LP	68	68	68	68	68
FRESH WATER TANK (GAL.)	50	50	50	50	50
WATER HEATER	6 Gal.Gas/E.I.	6 Gal.Gas/E.I.	6 Gal.Gas/E.I.	6 Gal.Gas/E.I.	6 Gal.Gas/E.I.
BLACK TANK	22	22	29	37	29
GREY TANK	37	34	29	29	34
OVERALL WIDTH	100"	100"	100"	100"	101"
SQ. FT	193	205	265	290	305
CU. FT. INT. STORAGE	91	79	76	73	124
CU. FT. EXT. STORAGE	102	85	113	100	77
# OF SLEEPING POSITIONS	5-6	6	6	6	8
# OF SEATBELTS	5	7	9	10	9

- ◆ AZDEL SUPERLITE™ SIDEWALLS
- ◆ LOW MAINTENANCE TPO ROOF MATERIAL
- ◆ STANDARD GENERATOR
- ◆ STANDARD SLIDE OUT AWNINGS
- ◆ 6 GALLON GAS E.I WATER HEATER
- ◆ LARGE DOUBLE DOOR REFRIGERATOR
- ◆ MICROWAVE OVEN
- ◆ COACH BATTERY DISCONNECT
- ◆ DECORATIVE ROMAN SHADES
- ◆ ONE PIECE SHOWER SURROUND
- ◆ GLASS SHOWER DOOR
- ◆ 5,000 LB HITCH W/ 7 WAY CONNECTION
- ◆ STEEL REAR BUMPER
- ◆ ALUMINUM RUNNING BOARDS
- ◆ SEATBELTS AT ALL SEATING LOCATIONS
- ◆ SEAMLESS COUNTERTOPS
- ◆ FLIP-N-STORE DINETTE STORAGE
- ◆ FLIP-OUT LCD BACK UP CAMERA (OPT PKG)
- ◆ A&E TWO STAGE 12V POWER AWNING (OPT PKG)
- ◆ CHILD SAFETY NET & BUNK LADDER (OPT PKG)
- ◆ OUTSIDE ENTERTAINMENT CENTER (OPT PKG)
- ◆ 60" X 80" QUEEN SIZE BEDS (NA. 23BB)
- ◆ SPACIOUS BUNK BEDS (23BB & 32BH)
- ◆ LARGE DINETTE SLEEPING AREAS
- ◆ REST EASY SOFA'S (30QB , 32 BH, & 31SS)
- ◆ HUGE INTERIOR & EXTERIOR STORAGE
- ◆ 15" LCD TV'S & DVD PLAYERS WITH A/V HOOKUPS IN EACH BUNK (OPT ON 32BH ONLY)



Easy to Use. Really.

Pete symbolizes our commitment to being your best friend on the road. Like Pete, we're always there to make sure your Coachmen is as easy and uncomplicated as possible, so you can escape life's hassles and enjoy RVing more.

Your Coachmen will be easy to buy, easy to use and easy to own. That's our promise to you. We accomplish this through clever designs and superior support after the sale. But the real measure of "easy" is in the countless thoughtful touches we include throughout your new Coachmen.

Fresh Water System



*Excluding 23BB



GVWR (Gross Vehicle Weight Rating): The Maximum permissible weight of the unit, including the unloaded vehicle weight plus all fluids, cargo, optional equipment and accessories. For safety and product performance, do not exceed the GVWR.

CW (Curb Weight): The weight of the unit without factory or dealer installed options, plus allowance for the weight of full fuel capacity. The "payload capacity" for all other fluids, cargo, occupants, optional equipment, and accessories can be determined by subtracting the CW from the GVWR.

GCWR (Gross Combined Weight Rating): The maximum total weight of the loaded unit, plus a tow vehicle. This includes the weight of both the unit and tow vehicle, fuel for each, all other fluids, cargo, occupants, optional equipment and accessories.

Wider Widths: Numerous Coachmen floorplans feature the "wide body" design concept, which gives you significantly enhanced interior living space and innovative floorplans.

In making your purchase decision, you should be aware that a few states restrict access on some or all roads within the state to vehicles with a maximum 96" width, although special road usage permits may be available. Vehicles up to 102" in some width are permitted in the vast majority of states. You should confirm the road usage laws in the states of interest to you before making your purchase decision. If width is of concern to you, we invite you to consider the broad array of other Coachmen models offers in the standard 96" width.

Important Note: All capacities are approximate, and all dimensions are nominal. Coachmen motorhomes are designed to allow for a wide variety of uses, extended trips with two people or short trips with multiple people. Accordingly, each unit allows ample

room for sleeping, seating, fluids and cargo. While the customer is the beneficiary of this design, the customer also bears the responsibility to select the proper combination of passengers, cargo, load, and tow vehicle without exceeding the chassis weight capabilities. Consumer may need additional braking capacity to tow loads greater than 1,000 pounds.

Seat belt should always be worn for passenger safety. Seat belts are provided at most locations to allow convenience in selecting which seat to occupy. However, it is not intended that all seating positions equipped with a seat belt may be occupied while the vehicle is in motion, without regard to other weight factors.

All Coachmen motorhomes are designed to ensure that the number of passengers allowed while the vehicle is in motion will always at least equal the stated sleeping capacity. Though extra seat belts may be provided, for your safety and the proper operation of your vehicle, limit your passengers to the number allowed by the Net Carrying Capacity of your vehicle.

Travel Easy™. Always.

RVing is easier with Coachmen's *Travel Easy*™ Roadside Assistance included for the first year on most new motorized and towable Coachmen RVs*. Administered by Coach-Net®, this service provides you with 24/7 operational, technical and emergency road service coverage. Anywhere. Anytime. *Travel Easy*™ is the security of knowing that help is an easy phone call away.

*See your dealer for details.



YOU CAN PURCHASE YOUR COACHMEN FREELANDER CLASS C AT

All information contained in this brochure is believed to be accurate at the time of publication. However, during the model year, it may be necessary to make revisions and Coachmen RV reserves the right to make all such changes without notice, including changes in prices, colors, materials, equipment & specifications, as well as the addition of new models and the discontinuance of models shown in this brochure. Therefore, please consult with your Coachmen Freelander dealer and confirm the existence of any materials, design or specifications that are material to your purchase decision. 8/09 Printed in USA

© Coachmen RV is a division of Forest River Incorporated All rights reserved.
P.O. Box 30, Middlebury, IN 46540 1-800-353-7383