

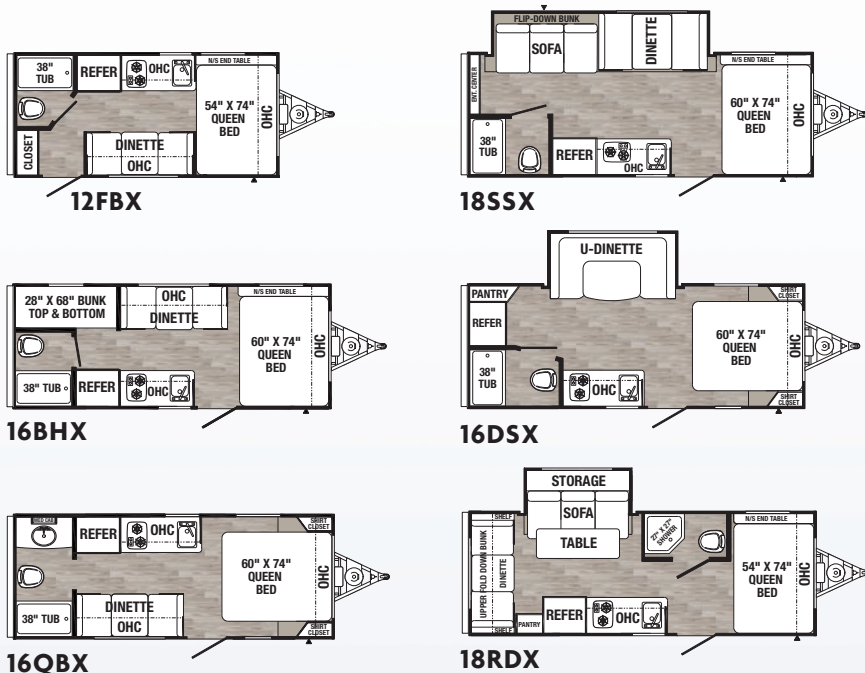
PUMA ULTRA & XLE LITE TRAVEL TRAILERS AND TOY HAULERS

# PUMA ULTRA & XLE LITE

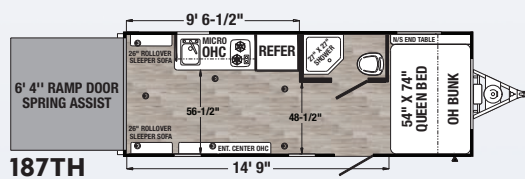
BY PALOMINO – SINCE 1968



# PUMA ULTRA LITES



# PUMA ULTRA LITE TOY HAULER



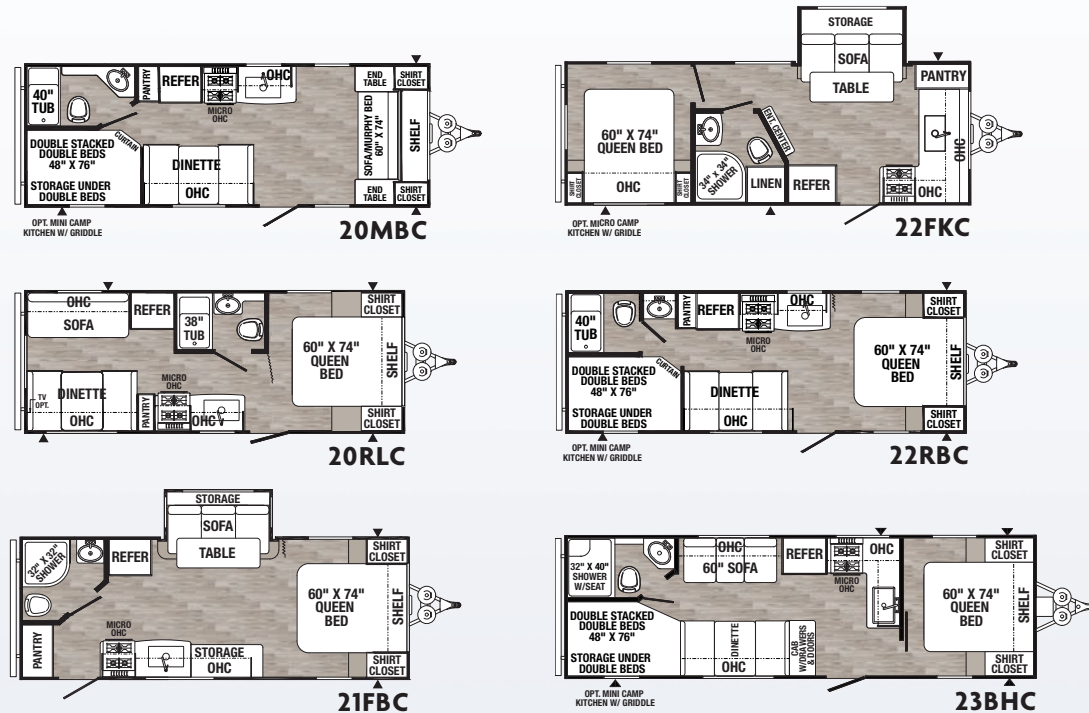
## PUMA ULTRA LITES

MODEL	12FBX	16BHX	16QBx	18SSX	16DSX	18RDx	187TH
Hitch Weight (lbs)	410	370	380	425	415	455	535
Axle Weight (lbs)	2400	2745	2715	3620	3270	3315	2965
UVW (lbs)	2839	3144	3124	4074	3714	3799	3529
GVWR (lbs)	3910	3870	3880	4825	4815	4855	4935
Cargo Capacity (lbs)	1070	725	755	750	1100	1055	1406
Exterior Length	18' 4"	21' 4"	21' 4"	22' 7"	22' 4"	23'	22' 7"
Exterior Height w/AC	9' 11"	9' 11"	9' 11"	10' 1"	10' 1"	10' 1"	10' 1"
Exterior Width	84"	84"	84"	84"	84"	84"	84"
Fresh Water Cap. (gal)	34	34	34	34	34	34	34
Black Water Cap. (gal)	30	30	30	30	30	30	30
Grey Water Cap. (gal)	30	30	30	30	30	30	30
Tire Size (in)	14"	14"	14"	15"	15"	15"	15"
Awning Size (ft) OPT.	10'	12'	13'	14'	14'	14'	14'

# PUMA XLE LITES

## LIGHTEN UP

Puma XLE Lite offers a broad range of value added lighter weight floorplans that are loaded with convenience features. They're a perfect fit for couples and families for weekend getaways. Our well-planned packages offer a popular selection of user-friendly amenities that RV enthusiasts prefer. Interiors include durable Beauflor tile pattern and efficient LED lighting throughout.

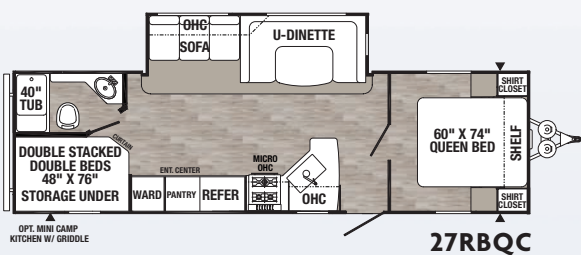
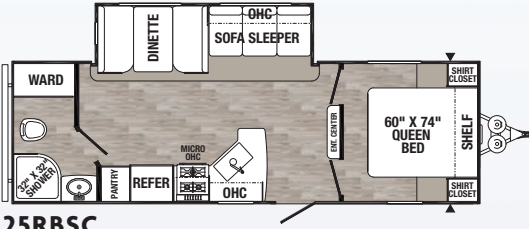
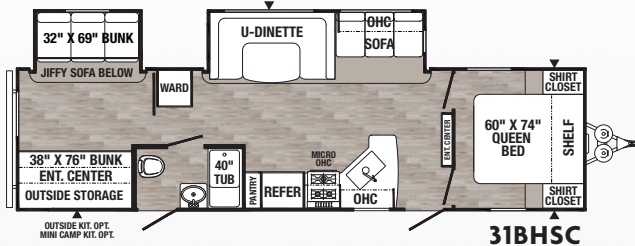
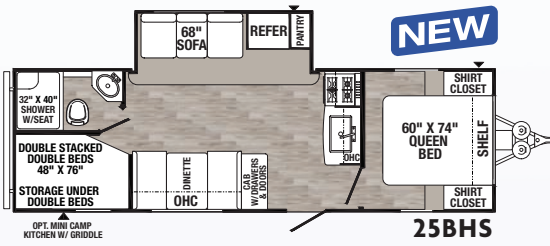
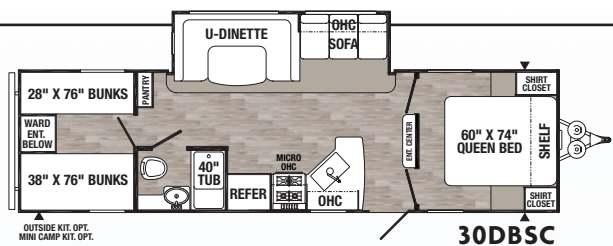
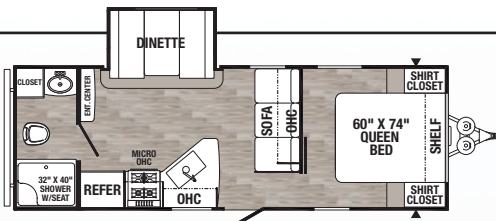


## PUMA XLE LITES

MODEL	20MBC	20RLC	21FBC	22FKC	22RBC	23BHC	24FBSC	25BHS
Hitch Weight (lbs)	450	380	460	700	435	600	556	
Axle Weight (lbs)	3970	3956	4092	4715	3770	4470	4252	
UVW (lbs)	4458	4124	4590	5453	4243	5108	4808	
GVWR (lbs)	6000	6000	6200	6953	5800	6608	6500	
Cargo Capacity (lbs)	1542	1876	1610	1500	1557	1500	1654	
Exterior Length	25' 10"	24' 8"	25' 3"	25' 10"	25' 10"	29' 11"	27' 4"	
Exterior Height w/AC	10' 2"	10' 2"	10' 2"	10' 2"	10' 2"	10' 2"	10' 2"	
Exterior Width	96"	96"	96"	96"	96"	96"	96"	
Fresh Water Cap. (gal)	43	43	43	43	43	43	43	
Black Water Cap. (gal)	34.5	34.5	34.5	30	34.5	34.5	34.5	
Grey Water Cap. (gal)	34.5	30	34.5	64.5	34.5	69	34.5	
Tire Size (in)	14"	14"	14"	14"	14"	14"	14"	
Awning Size (ft) OPT.	14'	10'	14'	18'	10'	19'	16'	

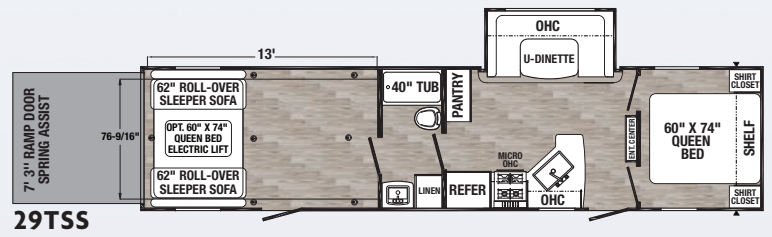
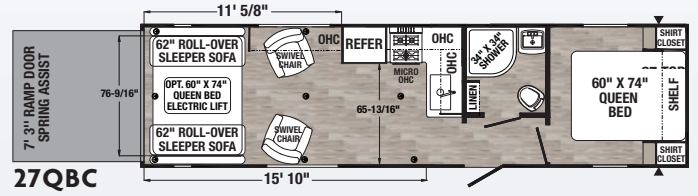
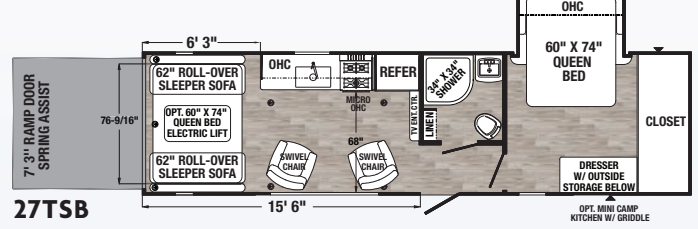
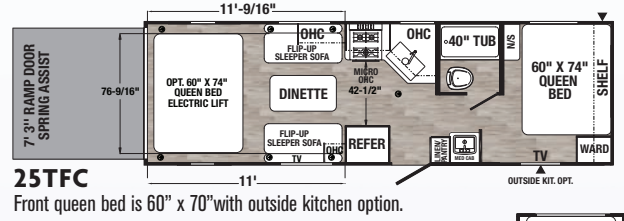
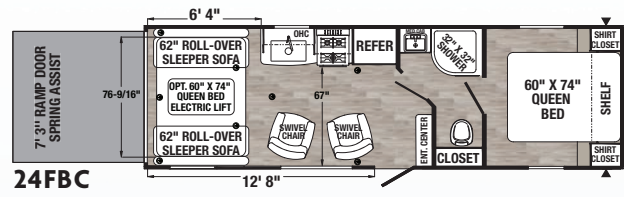
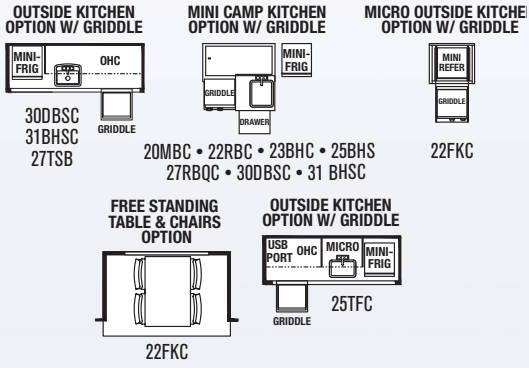
Refer to back cover for chart definitions.

# PUMA XLE TOY HAULERS



## XLE LITE TRAVEL TRAILER OPTIONS

Available on select models.



	25RBSC	27RBQC	30DBSC	31BHS
590	687	754	912	
5070	5208	5546	6996	
5698	5933	6338	7946	
7300	7687	8000	9600	
1602	1754	1662	1654	
29' 6"	33' 0"	33' 5"	35' 4"	
11' 1"	11' 1"	11' 1"	11' 1"	
96"	96"	96"	96"	
43	43	43	43	
34.5	30	34.5	30	
30	64.5	34.5	34.5	
15"	15"	15"	15"	
18'	21'	18'	21'	

	24FBC	25TFC	27TSB	27QBC	29TSS
Hitch Weight (lbs)	775	745	1145	892	1235
Axle Weight (lbs)	5248	5354	6085	5716	6580
UVW (lbs)	6061	6137	7268	6646	7853
GVWR (lbs)	7775	8800	9995	9200	11435
Cargo Capacity (lbs)	1714	2663	2727	2554	3582
Exterior Length	29'7"	29'7"	33' 5"	33'11"	37' 4"
Exterior Height w/AC	12'2"	12'2"	12'2"	12'2"	12'2"
Exterior Width	96"	96"	96"	96"	96"
Fresh Water Cap. (gal)	43	43	43	43	43
Black Water Cap. (gal)	34.5	34.5	34.5	34.5	34.5
Grey Water Cap. (gal)	34.5	34.5	34.5	34.5	34.5
Tire Size (in)	15"	15"	15"	15"	15"
Awning Size (ft) OPT.	18'	14'	21'	19'	21'

## PUMA XLE DECOR OPTIONS

Puma offers two contemporary decor packages.



## PUMA ULTRA LITE PACKAGES

### ULTRA LITE PACKAGE (Required)

- Aluminum Solid Double Step
- Outside Shower
- Spare Tire & Carrier
- 13,500 BTU Non-Ducted A/C
- Power Tongue Jack
- AM/FM/CD/DVD Stereo
- 55 Amp Converter
- Front Diamond Plate
- Electric Awning
- Stainless Steel Microwave
- Stainless Range Hood
- 2 Exterior Speakers
- Back-up Camera Prep

### ULTRA LEADER PACKAGE (Required)

- 11 Cu. Ft. 12V Residential Refrigerator
- Tub Surround
- Bedspread with Pillows
- Solar Prep
- TV Antenna
- Cable Hook-up
- Tinted Windows
- Night Shades
- Super Lube Axle
- Front & Rear Stabilizer Jacks
- Beauflor Linoleum
- Bath Skylight
- 6 Gal Gas/Electric DSI Water Heater
- LED Lighting
- TV Hook-up
- WiFi Prep

## PUMA ULTRA LITE STANDARD FEATURES

### EXTERIOR

- Friction Hinged Radius Entry Doors
- Smooth, Radius Front Metal with Diamond Plate
- Large Front Frameless Window (Most models)
- Powder Coated Frames
- Super Lube Axles
- Tinted Safety Glass
- Clamp Ring Windows
- Pass-Thru Storage (Where applicable)
- Alpha Superflex Roof (18 Year manufacturer's limited warranty)
- Rain Gutters with Large Down Spouts
- Radius Baggage Doors
- Darco Wrapped Underbelly
- 5/8" Araucopy Plywood Floor Decking (25 Year manufacturer's limited warranty)
- 2" x 2" Flush Floor Joists on 12" Centers
- 1-30 Lb. Gas Bottle
- Schwintek Slide System with Manual Override (Small models)
- Clamp Ring Luggage Doors
- Back-up Camera Prep
- Solar Prep

- Divided Silverware Drawer
- Nickel Finish, Single Control Gooseneck Kitchen Faucet
- Glass Range Cover
- Built-in Knife Rack
- LED Ceiling Lights
- 30 Amp Converter with Battery Charger
- Jack Knife Sofa with Pull-down Center Drink Tray - Storage Underneath\*
- Wood Medicine Cabinet with Mirrored Door\*
- Power Vent in Bath
- 27" x 27" Radius Shower w/Door\*
- 24" x 40" Tub/Shower\*
- 12V Shower LED Light
- 60" x 74" Queen Beds (Most models)
- Upgraded Soft Teddy Bear Bunk Mats
- Shirt Closet in Front Bedrooms\*
- Two Interior Decors
- Contemporary Hardware, Light & Bath Fixtures
- Dinette Seat Bases with Storage
- Residential Carpet with Pad
- Designer Window Treatments (Living room)

### SAFETY FEATURES

- CO2 Detector
- LP Leak Detector
- Fire Extinguisher
- Smoke Detector

\*Available on select models.

### INTERIOR

- 78" Interior Height
- 20,000 BTU Furnace
- USB Charging Ports
- Decorative Kitchen Backsplash
- Spice Rack (Kitchen)

YOUR **PUMA** ULTRA LITE & XLE LITE DEALER

## PUMA XLE LITE PACKAGES

### VALUE LEADER PACKAGE (Required)

- Tub Surround
- Bedspread with Pillows
- TV Antenna with Cable Hook-up
- Tinted Windows
- Super Lube Axles
- Front & Rear Stabilizer Jacks
- Beauflor Linoleum
- Bath Skylight
- LED Lighting
- Bedroom TV Hook-up
- WiFi Prep
- Solar Prep

### ELITE PACKAGE (Required)

- Electric Awning
- Oven & Range Hood
- Stainless Steel Microwave
- AM/FM/CD/DVD Stereo
- 2 Exterior Speakers
- Outside Shower
- Spare Tire
- Front Diamond Plate
- 13,500 BTU Ducted A/C
- 6 Gal Gas/Electric Water Heater
- Night Shades
- Aluminum Solid Steps
- 11 Cu. Ft. Residential Refrigerator

### ELECTRIC POWER PACKAGE (Optional)

- 4 Electric Stabilizer Jacks • 3500 lb Electric Tongue Jack

## PUMA XLE LITE STANDARD FEATURES

### EXTERIOR

- Friction Hinged Radius Entry Doors
- Smooth, Radius Front Metal with Diamond Plate
- Large Front Frameless Window (Most models)
- Powder Coated Frames
- Super Lube Axles
- Tinted Safety Glass
- Clamp Ring Windows
- Pass-Thru Storage (Where applicable)
- Alpha Superflex Roof (18 Year Manufacturer's Limited Warranty)
- Rain Gutters with Large Drop Spouts
- ABS Automotive Style Fender Skirts
- Radius Baggage Doors
- Darco Wrapped Underbelly
- 5/8" Araucopy Plywood Floor Decking (25 Year manufacturer's limited warranty)
- 2" x 3" Flush Floor Joists on 12" Centers
- 2-20 Lb. Gas Bottles
- Rack & Pinion Electric Slide System with Manual Override (Large models)
- Schwintek Slide System with Manual Override (Small models)
- Clamp Ring Luggage Doors
- Back-up Camera Prep
- Solar Prep

### INTERIOR

- 80" Interior Height (Large models)
- 78" Interior Height (Small models)
- USB Charging Ports
- Floor Ducted Heat (Most models)
- Decorative Kitchen Backsplash

### EXTERIOR

- Spice Rack (Kitchen)
- Divided Silverware Drawer
- Nickel Finish, Single Control Gooseneck Kitchen Faucet
- Undermount Stainless Steel Sink
- Glass Range Cover
- Built-in Knife Rack
- LED Ceiling Lights
- 55 Amp Converter with Battery Charger
- Jack Knife Sofa with Pull-down Center Drink Tray - Storage Underneath (Most models)
- Wood Medicine Cabinet with Mirrored Door
- Power Vent in Bath
- Glass Shower Door\*
- 12V Shower LED Light
- 60" x 74" Queen Beds
- Upgraded Soft Teddy Bear Bunk Mats
- Two Interior Decors
- Satin Nickel Hardware, Light & Bath Fixtures
- Square Dinette Seat Bases with Storage
- Residential Carpet with Pad
- Designer Window Treatments (Living room)

### SAFETY FEATURES

- CO2 Detector
- LP Leak Detector
- Fire Extinguisher
- Smoke Detector

\*Available on select models.


**PUMA**  
XLE LITE

**Puma XLE Lite by Palomino, a Division of Forest River, Inc.**  
2551 Century Drive  
Goshen, IN 46528  
[www.palominorv.com](http://www.palominorv.com)



### PRE-DELIVERY INSPECTION FACILITY


20,000 square feet of quality assurance. The bare essentials for a premium product. This state-of-the-art facility gives immediate daily feedback to production for quality assurance in every unit built.



### 24/7 EMERGENCY ROADSIDE ASSISTANCE WITH VEHICLE PURCHASE\*

TOWING  
JUMP-STARTS  
TIRE CHANGES  
FLUID DELIVERY  
LOCKOUT  
SERVICE

WINCH-OUT  
MOBILE MECHANIC  
TECHNICAL  
SUPPORT  
DEALER LOCATOR  
SERVICES



\*VALID FOR 1 YEAR FROM DATE OF PURCHASE

WWW.KOACARECAMPS.ORG




Fighting Cancer + Making Memories

FREE MEMBERSHIP

to Forest River Owners' Group

www.forestriverfrog.com

CUSTOMER SATISFACTION

FOREST RIVER


BUY LOCAL

PROVIDES LOCAL SERVICE

www.ForestRiverBuyLocal.com




Find us on Facebook



**Learn More**

Scan this barcode using a QR Reader on your smart phone to learn more about Forest River.



A Berkshire Hathaway company.

**GVWR (Gross Vehicle Weight Rating)** - is the maximum permissible weight of the unit when fully loaded. It includes all weights, inclusive of all fluids, cargo, optional equipment and accessories. For safety and product performance do NOT exceed the GVWR.

**GAWR (Gross Axle Weight Rating)** - is the maximum permissible weight, including cargo, fluids, optional equipment and accessories that can be safely supported by a combination of all axles.

**UVW (Unloaded Vehicle Weight)\*** - is the typical weight of the unit as manufactured at the factory. It includes all weight at the unit's axle(s) and tongue or pin and LP Gas. The UVW does not include cargo, fresh potable water, additional optional equipment or dealer installed accessories.

\*Estimated Average based on standard build optional equipment.

**CCC (Cargo Carrying Capacity)\*\*** - is the amount of weight available for fresh potable water, cargo, additional optional equipment and accessories. CCC is equal to GVWR minus UVW. Available CCC should accommodate fresh potable water (8.3 lbs per gallon). Before filling the fresh water tank, empty the black and gray tanks to provide for more cargo capacity.

\*\*Estimated average based on standard build optional equipment.

Each Forest River RV is weighed at the manufacturing facility prior to shipping. A label identifying the unloaded vehicle weight of the actual unit and the cargo carrying capacity is applied to every Forest River RV prior to leaving our facilities. The load capacity of your unit is designated by weight, not by volume, so you cannot necessarily use all available space when loading your unit.

All information contained in this brochure is believed to be accurate at the time of publication. However, during the model year, it may be necessary to make revisions and Forest River, Inc. reserves the right to make all such changes without notice, including prices, colors, materials, equipment and specifications as well as the addition of new models and the discontinuance of models shown in this brochure. Therefore, please consult with your Forest River dealer and confirm the existence of any materials, design or specifications that are material to your purchase decision. ©2020 Puma by Palomino a Division of Forest River, Inc., a Berkshire Hathaway company. All Rights Reserved. 8/20