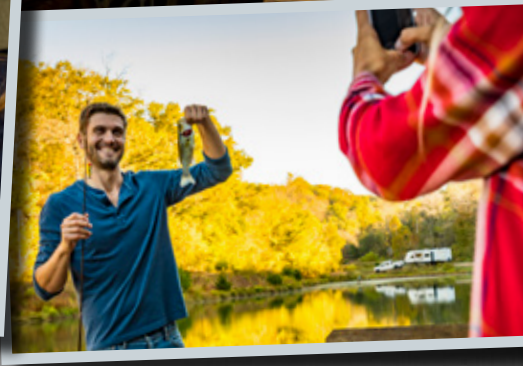


KODIAK





YES, IT HAS THAT!

KODIAK ULTIMATE 330BHSL | GRAPHITE

As the leader in ultra light technology, Kodiak offers an innovative, aerodynamic profile for easier towing and better fuel economy. But just because you can tow a Kodiak with an SUV, crossover, minivan or light truck, doesn't mean you'll be lacking amenities. Every Kodiak we build is packed full of modern interiors, features and conveniences to improve your camping experience.

KODIAK ULTIMATE STANDARDS AND OPTIONS

MANDATORY OPTIONS

- Ultimate Package
- Solid Surface Counter Tops with LED backlighting
- Radial Tires
- 15" Aluminum Rims
- Stainless Steel Appliances
- Heated and Enclosed Underbelly
- Power Tongue Jack with Docking Light
- 32" LED Flat Screen TV
- 39" LED Flat Screen TV (291 Only)
- Interior LED Lights
- Tri Fold Sleeper Sofa (Select Models Only)
- 60x80 Queen Bed
- Winterization

EXTERIOR OPTIONS

- 15k BTU A/C IPO
- 13.5k BTU
- Swing Out Bumper Grill
- State Seal
- CSA Construction & Seal

INTERIOR OPTIONS

- 50 AMP Service with 2nd A/C Prep
- 2nd A/C Non Ducted in Bedroom
- Freestanding Dinette IPO Booth (279, 291, 288, 290)
- Theater Seats IPO Chairs (291 & 290)

ULTIMATE PACKAGE

- Bear Cage Construction
- Fully Laminated Exterior
- Diamond Plate Front Rock Guard
- Easy Lube Axles
- Large Folding Grab Handle
- Spare Tire, Carrier & Cover
- Front & Rear Stab Jacks
- Adjustable Power Awning w/LED Lights
- Outside Speakers
- Exterior Spray Port
- 13,500 BTU Ducted A/C

20 lb LP Bottles w/Cover

- TV Antenna
- Bear Cave Storage with Oversized Baggage Doors
- Porcelain Toilet
- Night Shades Throughout
- Medicine Cabinet w/Mirror
- 6 Gallon Gas/Electric DSI Water Heater
- Tub Surround
- Kitchen & Bath Skylight
- 12V Bath Exhaust Fan
- High Rise Faucet
- Oversized Farm-style Single Bowl Sink
- 6 Cubic Foot Double Door Refer
- Three Burner Range Top w/Oven
- Range Hood with 12V Fan/Light
- Microwave
- Sink Cover
- AM/FM/CD/DVD Stereo w/Bluetooth
- Cable TV Hookup w/Booster
- Bedroom TV Hookup

w/Backer

- High Output Furnace
- Exterior TV Mount
- Central Control Station
- Oversized Dinette Windows
- Smoke, LP Leak, & Carbon Monoxide Detectors
- Bear Cage Construction
- Fire Extinguisher

MODERN LUXURY PACKAGE

- Gel Coat High Gloss Fiberglass
- Painted Front Fiberglass Cap
- Hybrid Aluminum Entry Steps
- iN-Command 1.05 with Touch Screen
- Automatic Leveling System



KODIAK ULTIMATE KITCHEN STORAGE



AUTOMATIC LEVEL-UP



KODIAK ULTIMATE 330BHSL BUNKHOUSE



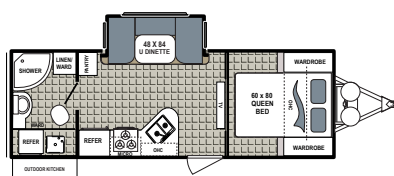
IN-COMMAND SYSTEM

IN-COMMAND

Control virtually anything with a motor or a switch with the proven iN-Command technology, using your smart phone, tablet, or the control commander mounted on the wall.

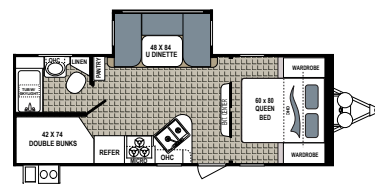
IDEAL KITCHEN

Our feature-rich kitchen offers all the conveniences of home. Modern island, stainless-steel appliances, high-power microwave, expansive solid-surface countertops with LED lights, high-rise faucet with convenient sprayer and so much more!



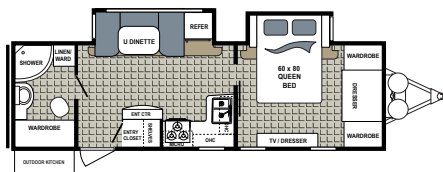
KODIAK | 230RBSL

Ext. Length: 27' 1" Ext. Height: 10' 9"
Average Shipping Weight: 5,180 Sleeps: 4-6



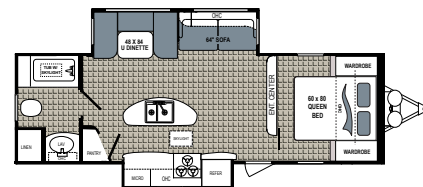
KODIAK | 240BHSL

Ext. Length: 27' 6" Ext. Height: 11'
Average Shipping Weight: 5,210 Sleeps: 4-6



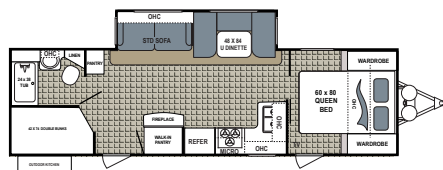
KODIAK | 2711BS

Ext. Length: 32' 0" Ext. Height: 10' 11"
Average Shipping Weight: 6,471 Sleeps: 8-9



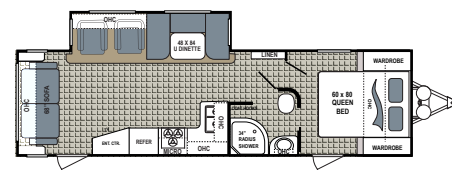
KODIAK | 279RBSL

Ext. Length: 30' 8" Ext. Height: 10' 10"
Average Shipping Weight: 6,459 Sleeps: 3-5



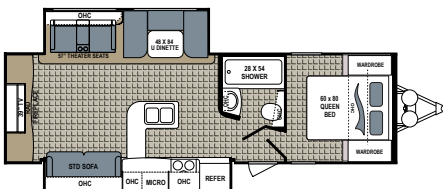
KODIAK | 288BHSL

Ext. Length: 32' 5" Ext. Height: 10' 10"
Average Shipping Weight: 6,329 Sleeps: 3-5



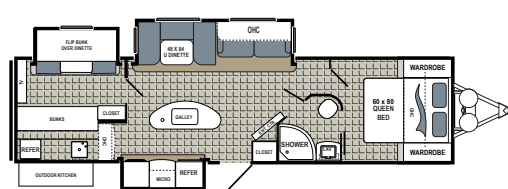
KODIAK | 290RLSL

Ext. Length: 33' 7" Ext. Height: 11' 2"
Average Shipping Weight: 6,199 Sleeps: 4-6



KODIAK | 291RESL

Ext. Length: 32' 10" Ext. Height: 11' 2"
Average Shipping Weight: 6,877 Sleeps: 4-6



KODIAK | 330BHSL

Ext. Length: 37' 3" Ext. Height: 11' 2"
Average Shipping Weight: 7,630 Sleeps: 8-9

KODIAK ULTIMATE SPECIFICATIONS

FLOORPLAN	DIMENSIONS			WEIGHTS (LBS.)			TANKS (GALS.)		
	EXTERIOR TRAVEL LENGTH	EXTERIOR WIDTH	EXTERIOR HEIGHT (WITH A/C)	**AVE SHIPPING WEIGHT	DRY HITCH WEIGHT	CARGO CARRYING CAPACITY	***FRESH WATER CAPACITY	GREY WATER CAPACITY	BLACK WATER CAPACITY
230RBSL	27' 1"	96"	10' 9"	5,180	661	2,420	52	39	28
240BHSL	27' 6"	96"	11'	5,210	608	1,390	52	39	28
2711BS	32' 0"	96"	10' 11"	6,471	762	1,129	52	78	28
279RBSL	30' 8"	96"	10' 10"	6,459	841	1,141	52	67	28
288BHSL	32' 5"	96"	10' 10"	6,329	643	1,271	52	39	28
290RLSL	33' 7"	96"	11' 2"	6,199	891	1,401	52	39	28
291RESL	32' 10"	96"	11' 2"	6,877	883	2,023	52	56	28
330BHSL	37' 3"	96"	11' 2"	7,630	979	2,050	52	78	28

*Length is defined as the distance from the centerline of hitch pin/coupler to rear bumper of trailer. **Our weights represent how most units are built, inclusive of many commonly-ordered options. ***Fresh water capacity includes water heater capacity.

DISCLAIMER: Product information is as accurate as possible as of the date of brochure publication. All features, floorplans and specifications in this brochure are subject to change without notice. Please consult Dutchmen's website at www.Dutchmen.com for current product information and specifications. Tow Vehicle Disclaimer. **CAUTION:** Owners of Dutchmen recreational vehicles are solely responsible for the selection and proper use of tow vehicles. All customers should consult with a motor vehicle manufacturer or their dealer concerning the purchase and use of suitable tow vehicles for Dutchmen products. Dutchmen disclaims any liability or damages suffered as a result of the selection, operation, use or misuse of a tow vehicle. DUTCHMEN'S LIMITED WARRANTY DOES NOT COVER DAMAGE TO THE RECREATIONAL VEHICLE OR THE TOW VEHICLE AS A RESULT OF THE SELECTION, OPERATION, USE OR MISUSE OF THE TOW VEHICLE. REFERENCE DUTCHMEN MANUFACTURING OWNERS MANUAL FOR LIMITED WARRANTY DETAILS.

KODIAK

ULTRA LITE



KODIAK ULTRA-LITE 243BHSL BEDROOM

CONVENIENCE COUNTS

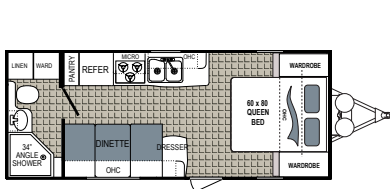
- ▶ Enjoy the outdoors even more with the largest windows offered in the travel trailer market.
- ▶ A flush mount stove with glass cover adds extra counter space.
- ▶ Seamless, one piece counter tops throughout provide a high end look and are much more durable than T-mold counter tops.
- ▶ USB ports placed next to the master bed and in the bunks on bunkhouse models for when you need to recharge.
- ▶ Sunlight is maximized with skylights in all bathrooms and kitchens.



KODIAK ULTRA-LITE 243BHSL

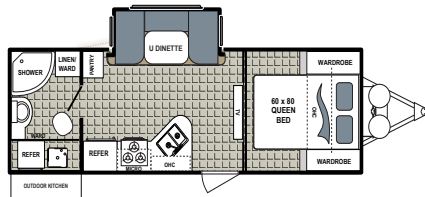


KODIAK ULTRA-LITE 243BHSL



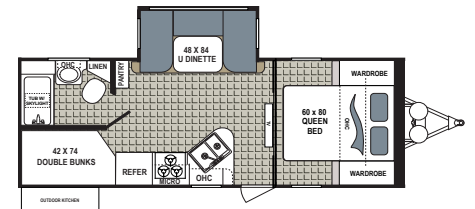
KODIAK ULTRA-LITE | 201QB

Ext. Length: 24' 2" Ext. Height: 10' 3"
Average Shipping Weight: 3,849 Sleeps: 2-4



KODIAK ULTRA-LITE | 233RBSL

Ext. Length: 27' 1" Ext. Height: 10' 8"
Average Shipping Weight: 4,891 Sleeps: 2-4



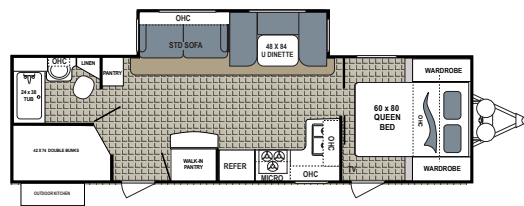
KODIAK ULTRA-LITE | 243BHSL

Ext. Length: 27' 6" Ext. Height: 10' 9"
Average Shipping Weight: 4,939 Sleeps: 2-4



KODIAK ULTRA-LITE | 283BHSL

Ext. Length: 32' 11" Ext. Height: 10' 7"
Average Shipping Weight: 5,579 Sleeps: 6-8



KODIAK ULTRA-LITE | 285BHSL

Ext. Length: 33' 0" Ext. Height: 10' 10"
Average Shipping Weight: 5,803 Sleeps: 8-9

KODIAK ULTRA-LITE

285BHSL | GRAPHITE

CONVERTIBLE DINETTE

With the option to set up as straight or U-shaped, the Kodiak's industry-leading convertible dinette comfortably sits a group of adults as well as a family. At night, arrange the cushions into a bed to accommodate extra sleeping campers.



BEAR CAVE STORAGE

We maximized the Kodiak's storage area and made it 40% larger than the competition. More space means even more room to bring it all!



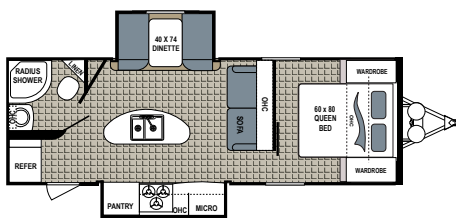
QUALITY APPLIANCES

Stainless-steel appliances provide the ultimate in form and function.



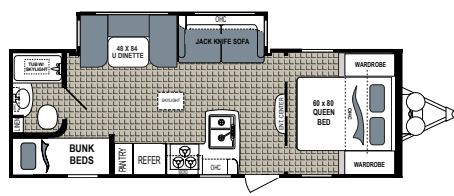
LED POWER AWNING

Our LED power awning provides maximum lighting during camping stays.



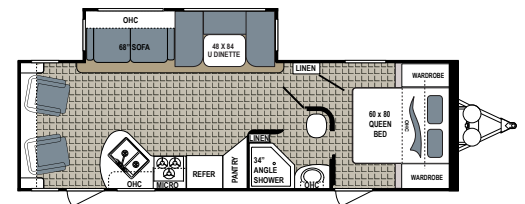
KODIAK ULTRA-LITE | 253RBSL

Ext. Length: 29' 1" Ext. Height: 10' 9"
Average Shipping Weight: 5,325 Sleeps: 2-4



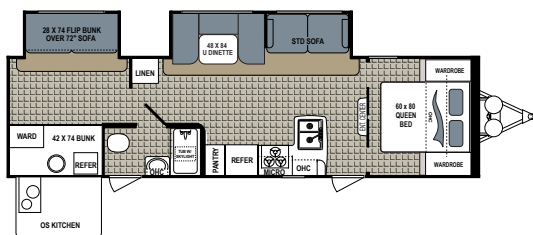
KODIAK ULTRA-LITE | 255BHSL

Ext. Length: 28' 9" Ext. Height: 10' 7"
Average Shipping Weight: 5,091 Sleeps: 4-6



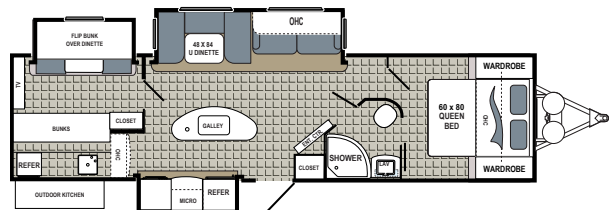
KODIAK ULTRA-LITE | 264RLSL

Ext. Length: 31' 2" Ext. Height: 10' 7"
Average Shipping Weight: 5,681 Sleeps: 2-4



KODIAK ULTRA-LITE | 299BHSL

Ext. Length: 35' 2" Ext. Height: 10' 9"
Average Shipping Weight: 6,624 Sleeps: 6-8



KODIAK ULTRA-LITE | 331BHSL

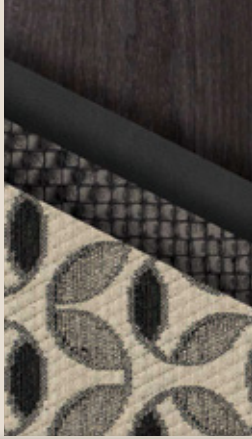
Ext. Length: 37' 3" Ext. Height: 11' 2"
Average Shipping Weight: 7,154 Sleeps: 8-10

DÉCOR

BROWNSTONE



GRAPHITE



IRONGATE



THE INDUSTRY'S BEST WARRANTY

Every Dutchmen RV comes with our all-new 3-year limited structural warranty. Dutchmen owners can expect an extra two years of protection and peace of mind.

ROOF

- ▶ Dutchmen uses a fully walkable, 5" thick truss-style, high-strength aluminum-frame roof.
- ▶ The fully welded aluminum tubular framed roof offers strength and sustainability for lasting appeal.
- ▶ The TPO roof system ensures exceptional resistance to ultraviolet, ozone and chemical exposure, backed by a 12-year manufacturer's warranty.
- ▶ High-density structural foam provides superior structural strength and reduces weight for easier towing.

WALL

- ▶ High-gloss fiberglass exteriors provide long-lasting appeal.
- ▶ Welded aluminum tubular framed walls give Kodiak a lightweight, durable structure.
- ▶ High-density structural foam insulation provides superior insulation and reduces weight for easier towing.
- ▶ Constructed of durable, high-impact ABS plastic, your fender skirts curve underneath your Kodiak for ultimate protection.
- ▶ Designed to be towed by light trucks and sports utility vehicles, Kodiak's aerodynamic profile pushes air up the front wall and over the roof, improving towing ease and fuel economy.

FLOOR

- ▶ Dutchmen's resilient flooring surface is backed with a 7-year warranty to ensure durability and your satisfaction for the long haul.
- ▶ We include high-density structural foam for improved performance.
- ▶ Each Kodiak's PolyPly waterproof vapor barrier floor surface has passed a three-cycle and 24-hour soak test for leak-proof reliability.

CHASSIS

- ▶ Every Kodiak model is built on an I-beam chassis, the best in its class.
- ▶ We boast the strongest frame found in a travel trailer with fully extended and welded outriggers for added support and durability.

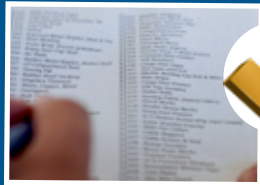
DUTCHMEN CONSTRUCTION





100% PRE-DELIVERY INSPECTION

At Dutchmen, quality is our standard. **Every single Dutchmen RV that comes off the line receives its own pre-delivery inspection.** Typically, a competitor performs random inspections, meaning you won't find this commitment to quality anywhere else.



253 POINT INSPECTION



RAIN BAY

KODIAK ULTRA-LITE STANDARDS AND OPTIONS

MANDATORY OPTIONS

- 60x80 Queen Bed
- Express Package
- Radial Tires
- Stainless Steel Appliances
- Enclosed Underbelly
- Black Tank Flush

EXTERIOR OPTION

- Aluminum Rims
- Power Tongue Jack
- Coleman Bumper Mount Grill
- 15k BTU A/C IPO 13.5k BTU
- 50 AMP Service with 2nd A/C Prep (Select Models)

INTERIOR OPTIONS

- 32" LED TV (Select Models)
- Tri-Fold Sleeper Sofa

ULTRA-LITE PACKAGE

- Bear Cage Construction
- Fully Laminated Exterior
- Winterization
- Exterior TV Mount
- Pocket Doors in Bedroom (Select Models)
- Oversized Dinette Windows
- Semi Gloss Grey Exterior
- Diamond Plate Front Rock Guard
- Dark Tinted Safety Glass Windows
- Easy Lube Axles

- Large Folding Grab Handle
- Spare Tire & Carrier
- Front & Rear Stab Jacks
- Adjustable Power Awning with LED lighting
- Outside Speakers
- 13,500 BTU Ducted A/C
- 2 - 20 lb LP Bottles w/Cover
- TV Antenna
- Oversized Baggage Doors
- Bear Cave Storage
- Foot Flush Toilet
- Night Shades Throughout
- Medicine Cabinet w/Mirror
- 6 Gallon Gas/Electric DSI Water Heater
- Tub Surround

- Kitchen & Bath Skylight
- 12V Bath Exhaust Fan
- High Spout Faucet
- 6 Cubic Foot Double Door Refer
- Three Burner Range Top w/Oven
- Range Hood with 12V Fan/Light
- Microwave
- AM/FM/CD/DVD Stereo
- Cable TV Hookup w/Booster
- Bedroom TV Hookup w/Backer
- High Output Furnace
- Central Control Station
- Smoke, LP Leak, & Carbon Monoxide Detectors
- Fire Extinguisher

KODIAK ULTRA-LITE SPECIFICATIONS

FLOORPLAN	DIMENSIONS			WEIGHTS (LBS.)			TANKS (GALS.)		
	*EXTERIOR TRAVEL LENGTH	EXTERIOR WIDTH	EXTERIOR HEIGHT (WITH A/C)	**AVERAGE SHIPPING WEIGHT	DRY HITCH WEIGHT	CARGO CARRYING CAPACITY	***FRESH WATER CAPACITY	GREY WATER CAPACITY	BLACK WATER CAPACITY
201QB	24' 2"	96"	10' 3"	3,849	385	1,551	52	39	28
233RBSL	27' 1"	96"	10' 8"	4,891	621	2,709	52	39	28
243BHSL	27' 6"	96"	10' 9"	4,939	505	1,661	52	39	28
253RBSL	29' 1"	96"	10' 9"	5,325	586	1,275	52	39	28
255BHSL	28' 9"	96"	10' 7"	5,091	560	1,509	52	39	28
264RLSL	31' 2"	96"	10' 7"	5,681	681	1,919	52	39	28
283BHSL	32' 11"	96"	10' 7"	5,579	754	2,021	52	39	28
285BHSL	33' 0"	96"	10' 10"	5,803	610	1,797	52	39	28
299BHSL	35' 2"	96"	10' 9"	6,624	796	976	52	39	28
331BHSL	37' 3"	96"	11' 2"	7,154	868	2,526	52	78	28

*Length is defined as the distance from the centerline of hitch pin/coupler to rear bumper of trailer. **Our weights represent how most units are built, inclusive of many commonly-ordered options. ***Fresh water capacity includes water heater capacity.

DISCLAIMER: Product information is as accurate as possible as of the brochure publication date. All features, floorplans and specifications in this brochure are subject to change without notice. Please consult Dutchmen's website at www.Dutchmen.com for current product information and specifications. Tow Vehicle Disclaimer. **CAUTION:** Owners of Dutchmen recreational vehicles are solely responsible for the selection and proper use of tow vehicles. All customers should consult with a motor vehicle manufacturer or their dealer concerning the purchase and use of suitable tow vehicles for Dutchmen products. Dutchmen disclaims any liability or damages suffered as a result of the selection, operation, use or misuse of a tow vehicle. DUTCHMEN'S LIMITED WARRANTY DOES NOT COVER DAMAGE TO THE RECREATIONAL VEHICLE OR THE TOW VEHICLE AS A RESULT OF THE SELECTION, OPERATION, USE OR MISUSE OF THE TOW VEHICLE. REFERENCE DUTCHMEN MANUFACTURING OWNERS MANUAL FOR LIMITED WARRANTY DETAILS.

LIGHT ON WEIGHT

HEAVY ON FEATURES



THE INDUSTRY'S BEST WARRANTY

Every Dutchmen RV comes with our all-new 3-year limited structural warranty. Dutchmen owners can expect an extra two years of protection and peace of mind.



Dutchmen®

Legendary Innovation. Trailblazing Value.

MORE STANDARD FEATURES MORE VALUE

Dutchmen RVs turn more heads on the lot and in the campground than any other. Why? While other manufacturers offer features as options, Dutchmen tends to make those same features standard. Call it "bang for the buck," "more for your money," or simply "more value." **We've built a reputation for bringing RV owners more standard features for less money** for more than 25 years . . . and it's a reputation we plan to keep.

300

STRONG

NATION WIDE DEALER NETWORK

More than 300 Dutchmen dealers across North America and our industry-leading service center in Goshen, Indiana, combine for your peace of mind before, during and after the sale. Rest assured no matter where your travels take you, **the best-resourced RV manufacturing company in the world is behind you all the way.**

PO BOX 2000 • 2164 Caragana Court
Goshen, Indiana 46527 Sales: 574.537.0600
www.dutchmen.com

At Dutchmen, quality is our standard. **Every single Dutchmen RV that comes off the line receives its own pre-delivery inspection.** Typically, a competitor performs random inspections, meaning you won't find this commitment to quality anywhere else.



For the latest updates on floorplans and specs, scan this QR Code with your favorite QR Code reader.



www.dutchmen.com

Visit us online to see all of the Dutchmen brands, innovative models and spacious floorplans.

Your local dealer

From giving advice to servicing products, we consider our loyal dealers the best resource for learning about Dutchmen products.

KD-DM0118