

TOY HAULERS
keystonerv.com/raptor

RAPTOR



**Keystone RV
Company**

The ultimate
ownership experience.

The ultimate ownership experience.

The goal of Keystone RV Company is to surprise and delight our owners at each and every touchpoint. We're happy when our campers are happy, and we are committed to providing the very best ownership experience in the industry.



**Keystone RV
Company**

1 EASIER SHOPPING.

At Keystone, we make choosing an RV as easy as finding the Big Dipper on a dark summer night. With comprehensive online product information, Key Connect™ product advisors, and an unparalleled dealer network, we will help you select the perfect RV for your family's adventure.

2 INNOVATIVE THINKING.

The road's a nicer place when you have the industry's smartest features behind you. Keystone leads the pack in patented innovations that make our RVs safer, more comfortable, and easier to operate.

3 LONG HAUL QUALITY.

To keep you on the road, there are certain things we just won't build a Keystone RV without. Game-changing features like our Unified Wiring Standard, Tru-Fit™ five-point slide construction, and no-fail Tuf-Lok™ A/C duct joiners combined with exhaustive testing and inspections are some of the reasons why Keystone is able to offer our owners the industry's best 3-year limited structural warranty.

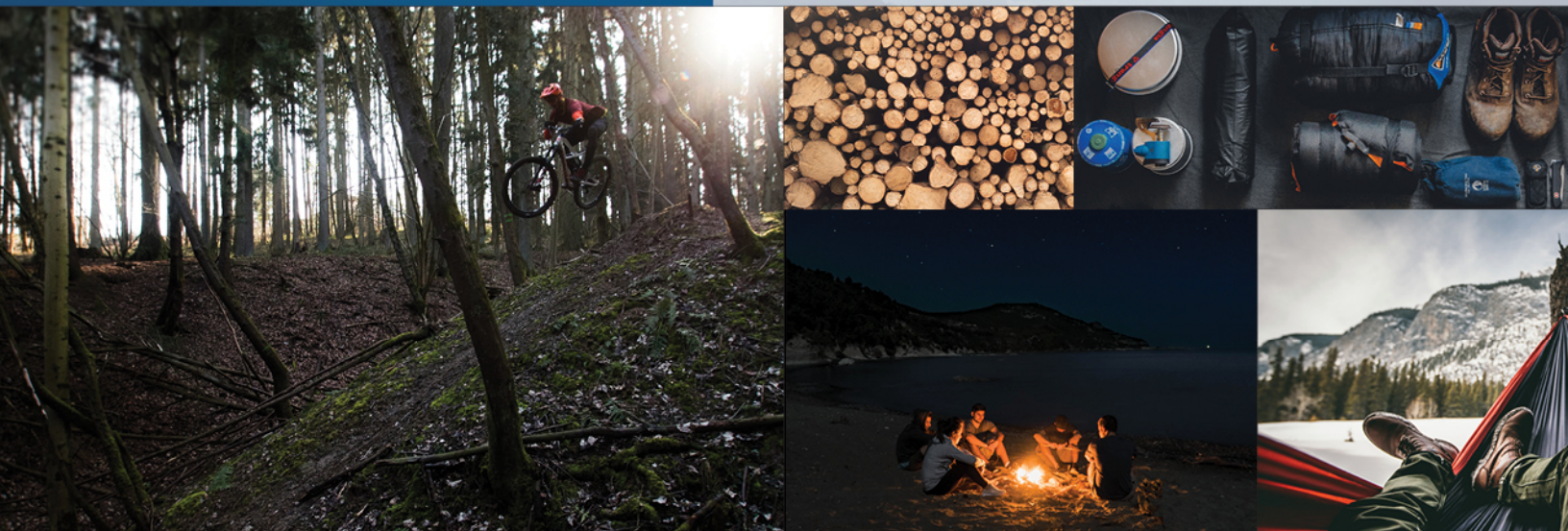
4 WORRY-FREE CUSTOMER SERVICE.

Wherever the road takes you, you're never too far from an authorized Keystone service center. We also offer live service assistance, ultra-fast parts shipping, online maintenance tips and tricks, and a single-point warranty claims policy. *That's* peace of mind.

5 KEYSTONE NATION.

When you choose Keystone, you become a part of one of the largest camping families in the country. We're Keystone Nation. A friendly community where people share photos, travel tips and amazing stories – all in the spirit of camaraderie and adventure. Come join us.

Experience the Raptor lifestyle by visiting [#keystoneraptor](#)



RAPTOR



RAPTOR | TOY HAULERS

Adventure That Knows No Limits.

In 2003, Keystone RV set the standard for durable and innovative toy haulers with the birth of the iconic Raptor brand. Still a favorite among thrill-seekers, Raptor is rapidly developing a new fan base. Growing families, hobbyists, and outdoor enthusiasts of all types appreciate Raptor's flexible floorplans, multi-zone living, and modern, sophisticated design. Raptor toy haulers strike the perfect balance of residential comfort and flexibility to deliver no-limits adventure that evolves as you do.



Keystone EXCLUSIVE Innovations

Year after year, Keystone RV's experienced team delivers Built For the Long Haul quality you expect and exclusive innovations you won't find anywhere else.



**3-year Limited Structural Warranty,
1-year Limited Base Warranty**

Every new Keystone RV comes with the industry's best three-year limited structural warranty AND a one-year limited base warranty. Ask your dealer, visit keystonerv.com, or call Keystone Owner Relations for details.



4G LTE and Wi-Fi Prep

All Raptors are equipped with a new antenna that integrates 4G LTE and Wi-Fi with standard VHF/UHF/AM/FM reception.



KeyTV™

No more connection guesswork or poor reception. KeyTV offers a game-changing, single point of control of over-the-air, cable, and satellite feeds. Visit us online for more information.



Color-Coded Wiring Standard

Easy-to-trace circuits simplify electrical and entertainment system troubleshooting.



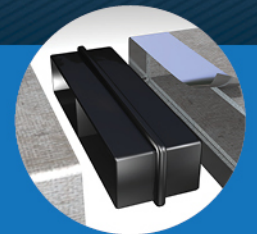
Hitch Vision™

Simplifies hitch hook-up with "no looking back" convenience.



In-floor Heating Ducts

Distributes heat evenly for greater comfort.



Tuf-Lok™ A/C Duct Joiners

Crush resistant design securely joins ductwork and A/C units, and drastically reduces chilled-air leaks to boost cooling efficiency and comfort.



Tru-Fit™ Slide Construction

A more durable slide room design that minimizes functional motor and structural stress, resists leaking.

Cleverly Designed

With double-duty features and unexpected details, Raptor gives you the flexibility you're looking for in a toy hauler.



Washer/Dryer Prep and TV in Garage
Fully-outfitted to take care of business (and have a little fun while doing it).

Raptor 423 Garage
With the touch of a button, the HappiJac™ Power Bed Lift turns your garage into a gathering space with seating for four or a queen-over-queen bunkhouse.



MORryde® Flip-up Barstools (select models)
Space-saving and secure—a Raptor signature innovation.



Furrion® Backup Camera
Standard on all Raptor toy haulers.



Furrion® Oven with Drawer
Stylish design and storage to spare.



MORryde® Step Above™
Safe and secure main entry with strut assist.



MORryde® Zero Gravity™ Ramp Door
Easily access your toys with one touch with no hinges or extra hardware .

Tough as Nails

Raptor's robust construction and brawny components are ready for whatever comes their way.



more product detail at
www.keystonerv.com/Raptor



Everything you'd expect in a toy hauler and oh, so much more.

Raptor's exciting new interior reflects the desire for light, designer-inspired decor that is airy and inviting. Espresso-colored cabinetry has been replaced with stunning washed gray, glass-paneled cabinets with the kitchen featuring a herringbone, slate-gray backsplash wall. Raptor's new decor takes cues from modern home designs, with the look of reclaimed barn wood and farmhouse-style accents. Lighter carpet is used in the master bedroom to pair with a chic shiplap-look headboard, bringing a modern elegance to the toy hauler category.



Décor Options

Quantum (shown left) offers dappled gray seating with light linen-look valances. Gravity (right) features espresso seating and warm toned window treatments.



A Room With A View

Oversized windows let in an abundance of natural light and stunning views.





more product detail at
www.keystonerv.com/Raptor

Raptor | TOY HAULERS

- EXCLUSIVE Omni-Chill™ technology, 3 A/C operation for maximum cooling
- 5,000 lb. frame-welded tie-downs
- iN-Command® control system with HVAC and auto-generator start
- MORryde® Zero Gravity ramp door
- Roof wired for solar prep panel (solar panel optional)
- MORryde® Step Above™ with strut-assist main entry
- Soft-close hardwood cabinet doors
- MORryde® patio system with side-entry patio steps
- Furrion® wireless backup camera
- MCD roller shades
- MORryde® flip-up bar stools (select models)
- Furrion® stainless steel recessed range, drawer, and convection microwave
- 78" main entry door (largest height in industry)
- Winegard® Wi-Fi antenna
- G-range tires
- Furrion® one-remote entertainment package (TV's, stereo, fireplace)
- LED backlit countertops and crown molding
- Rota-Flex™ pin box and Equa-Flex™ suspension
- Reclining furniture with heat, light, and massage
- USB outlets in all sofa slide-outs
- KeyTV™ – A simplified multisource signal controller that distributes satellite, cable, and over-the-air feeds via a single coax cable to every television



EXCLUSIVE Omni-Chill™
Simultaneous operation of three A/C units for max cooling (up to 8° cooler in 100° ambient temperature in lab testing).



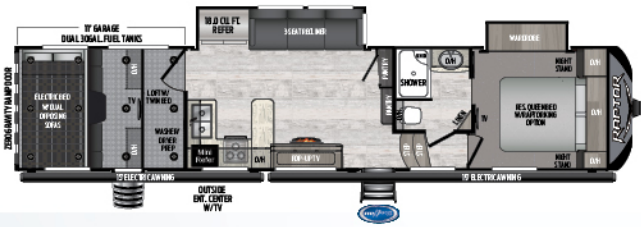
Frame-welded tie downs
Industry-leading 5,000 lb. capacity tie-downs for increased safety and security.



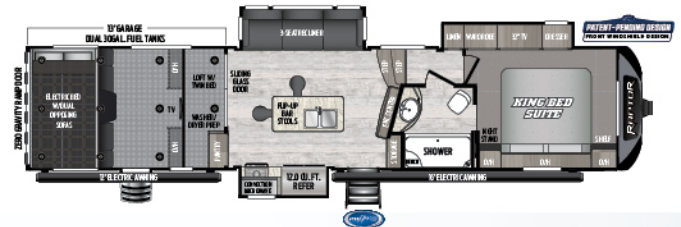
A Key Performance™ brand
Dedicated toy hauler design and manufacturing team to deliver a higher standard of durability and performance.



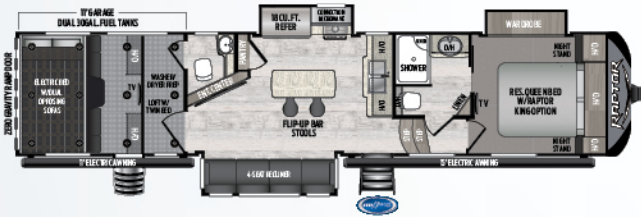
iN-Command® Generation 3 w/Global Connect
Total control over HVAC, awnings, lights and monitoring system from your smartphone.



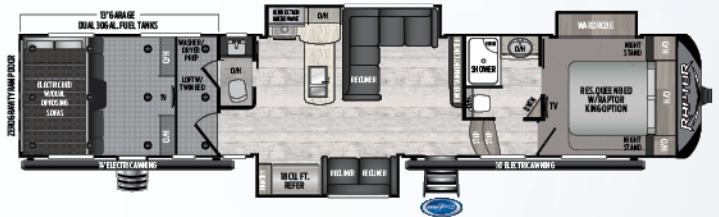
351 | U-shaped kitchen, tandem axle, 11' garage
Weight: 13546 LBS. | Length: 39'



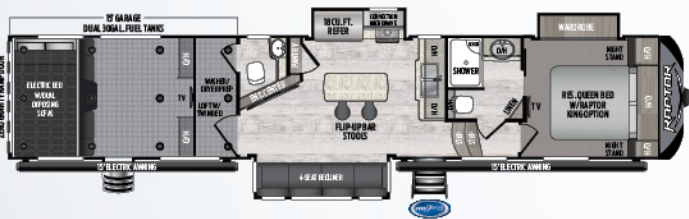
354 | Island kitchen, 13' garage, tandem-axle, windshield
Weight: 13766 | Length: 39'



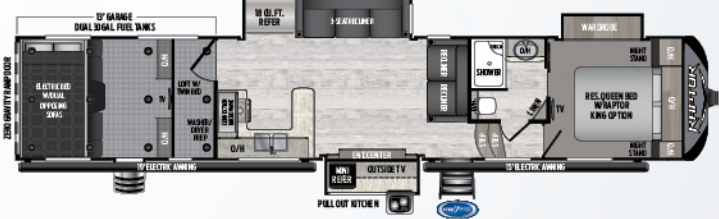
356 | Island kitchen, 1 1/2 bath, tandem-axle, 11' garage
Weight: 14096 LBS. | Length: 39'



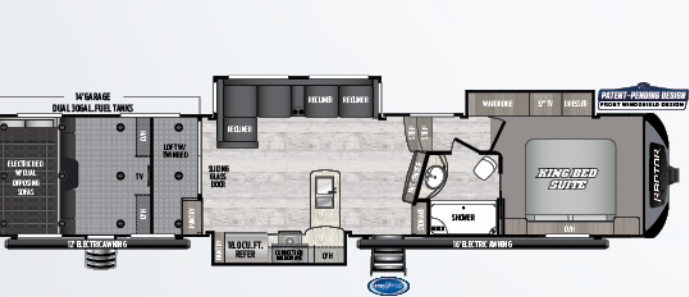
413 | L-shaped sofa, 1 1/2 bath, triple axle, 13' garage
Weight: 14970 LBS. | Length: 43' 6"



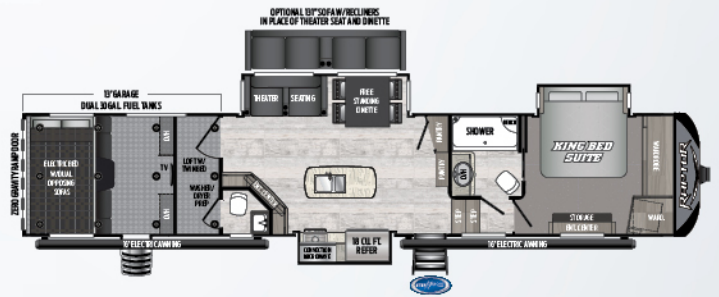
415 | Island kitchen, 1 1/2 bath, triple-axle, 15' garage
Weight: 15294 LBS. | Length: 44'



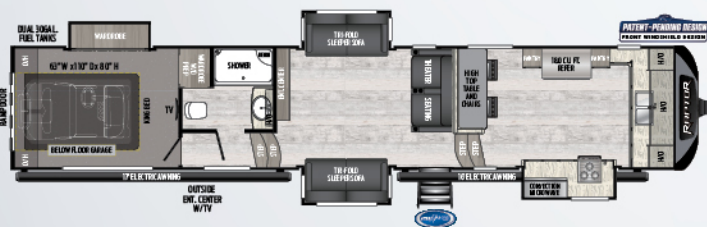
423 | U-shaped kitchen, triple-axle, 13' garage
Weight: 15419 | Length: 44'



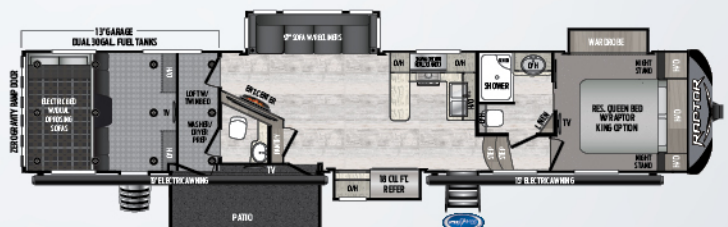
424 | L-shaped sofa, windshield, triple-axle, 14' garage
Weight: 15306 LBS. | Length: 43' 1"



426 | Island kitchen, 1 1/2 bath, triple-axle, 13' garage
Weight: 15352 LBS. | Length: 43' 6"



427 | Front kitchen, windshield, triple-axle, below-floor garage
Weight: 15188 LBS. | Length: 43' 11"



429 | 13' garage, 1 1/2 bath, side patio w/ dual entry, triple axle
Weight: 15845 LBS. | Length: 44' 6"

FULL-PROFILE FIFTH WHEELS

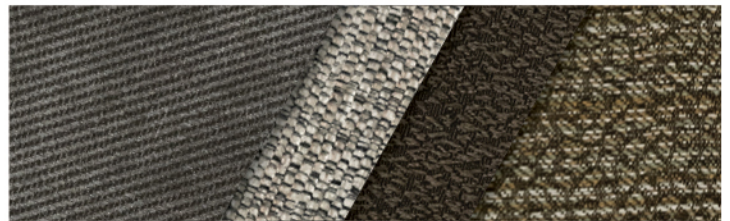
MODEL	WEIGHT	CARRYING CAPACITY	HITCH WEIGHT	FRESH WATER	WASTE WATER	GRAY WATER	LPG	LENGTH*	WIDTH	HEIGHT	AWNING
351	13371	3629	3020	106	44	82	60	39'	8' 4"	13' 2"	19'/15'
354	13593	3407	3110	106	44	82	60	39'	8' 4"	13' 2"	16'/12'
356	13884	3116	3175	106	82	82	60	39'	8' 4"	13' 2"	15'/11'
413	14970	4030	3295	106	82	82	60	43' 6"	8' 4"	13' 6"	16'/12'
415	15051	3949	3480	106	82	82	60	44'	8' 4"	13' 6"	15'/15'
423	15143	3857	3390	106	44	82	60	44'	8' 4"	13' 6"	15'/19'
424	15306	3694	3445	106	44	82	60	43' 1"	8' 4"	13' 6"	12'/16'
426	15190	3810	3570	106	82	82	60	43' 6"	8' 4"	13' 6"	16'/16'
427	14976	4024	3605	106	38	76	60	43' 11"	8' 4"	13' 6"	16'/17'
429	15805	3195	3600	106	82	82	60	44' 6"	8' 4"	13' 6"	15'/20'

DISCLAIMER: Product information is as accurate as possible as of the date of publication of this brochure. All features, floor plans, and specifications in this brochure are subject to change without notice. Please also consult Keystone's web site at www.keystonerv.com for more current product information and specifications. Tow Vehicle Disclaimer. CAUTION: Owners of Keystone recreational vehicles are solely responsible for the selection and proper use of tow vehicles. All customers should consult with a motor vehicle manufacturer or their dealer concerning the purchase and use of suitable tow vehicles for Keystone products. Keystone disclaims any liability or damages suffered as a result of the selection, operation, use or misuse of a tow vehicle. KEYSTONE'S LIMITED WARRANTY DOES NOT COVER DAMAGE TO THE RECREATIONAL VEHICLE OR THE TOW VEHICLE AS A RESULT OF THE SELECTION, OPERATION, USE OR MISUSE OF THE TOW VEHICLE. *Length is defined as the distance from the centerline of hitch pin/coupler to rear bumper of trailer. Please review owner's manual prior to purchase for more information on service warranties, extended use, towing and maintenance. Owner's manuals can be found at keystonerv.com.

DÉCOR OPTIONS



GRAVITY



QUANTUM

FULL BODY PAINT OPTIONS



1

ARCTIC WHITE

2

KEYSTONE BLUE

3

AGGRESSIVE ORANGE

VELOCITY PACKAGE *

- 5,000 lb. frame-welded tie-downs
- G-Rated tires with 16" premium wheels
- MORryde® Zero Gravity ramp door
- MORryde® Step Above™ with strut-assist and 78" main entry door
- Furrion® Unismart™ Entertainment Package (TV's, Stereo, Fireplace)
- Furrion® stainless steel, recessed, 22" oven with stainless drawer
- Furrion® backup camera
- Keystone EXCLUSIVE KeyTV™ and Furrion® Wi-Fi
- Roof wired for solar panel, standard (solar panel optional)
- Soft-close hardwood cabinetry
- MCD roller shades

STANDARDS AND OPTIONS

INTERIOR

iN-Command® smart automation system
 Omni-Chill™ triple A/C operation
 PolarMax™ 18 cu. ft. stainless steel refrigerator
 12-gal. gas/electric DSI water heater
 30" stainless steel residential convection microwave
 Roll-up sink cover/drying rack
 Upgraded residential pull-out kitchen faucet
 Solid-surface counter tops with LED backlighting
 Large stainless steel kitchen sink
 Hardwood cabinetry with hidden hinges
 100 lb. capacity full-extension ball-bearing drawer guides
 Hardwood ceiling treatment with LED accent lighting
 Accent and pendant lighting
 Wood crown molding
 Reclining furniture with heat, light, and massage
 USB ports in sofa slide-out box
 Dual-entrance master bath
 Power vent in master bathroom
 Porcelain foot-flush toilet
 Fiberglass one-piece shower surround
 Shower skylight
 Residential wooden interior passage door
 Bedroom carpet
 Raptor control panel with fuel gauge
 Automatic transfer switch with generator prep
 Battery quick-disconnect
 50 AMP Service
 35,000 BTU Furnace
 Washer/dryer Prep
 Ducted A/C into garage
 Ducted heat into garage
 Electric beds with dual opposing flip-down sofas
 Pull-down screen in garage
 Pull-down 32" TV in garage
 50" living room LED TV
 32" or 24" TV in bedroom per model
 Living area speakers (2) & cargo area speakers (2)
 Carbon monoxide detector
 Smoke detector
 LP gas detector
 Fire extinguisher
 Gray high-gloss exterior sidewalls
 6-point hydraulic auto-leveling

EXTERIOR

Automotive-grade painted front cap
 Fiberglass painted front cap w/ MaxTurn Technology™
 Oversized convenience center (single-point for all system hook-ups)
 On-board fuel station (30-gallon capacity)
 30-gallon generator fuel tank
 Exterior cable/satellite hook-up
 Dyna Span® floor decking (25-year warranty)
 Rear LED Lights
 Large LED outdoor activity lights (3)
 One-touch electric awnings with LED Lights (2)
 Aluminum step garage entry
 Large fold-away entry assist handles (2)
 Outside shower—hot and cold with 25' coil hose
 Large, tinted safety glass windows (80% tint)
 Heated and lighted pass-through storage
 1" slam-latch baggage doors
 Exterior ladder
 Rain gutters with extended drip spouts
 Ram air ventilation system (in garage)
 New upgraded graphics package with 5-year warranty
 Radius roof with one-piece TPO walk-on roof and 12-year warranty
 Black tank flush
 Spare tire
 Equa-Flex® Trailair® suspension
 Rota-Flex® pin box
 Dexter® E-Z Lube® 7,000 lb. axles
 12" x 2" self-adjusting electric brakes
 Heated and enclosed underbelly
 Double-welded aluminum construction
 Norco® slide rooms
 5" pre-engineered roof truss rafters
 2 JBL exterior marine grade speakers
 G-rated tires

OPTIONS

Onan® 5,500 watt gas generator
 Rear-ramp patio with electric awning and side-entry steps
 King bed
 Three-season patio door
 265 watt solar panel w/2000 watt inverter
 Frameless dual-pane windows
 131" sofa with recliners (426 only)
 High definition paint—white, blue, orange
 Dinette seat with slider-top (413 only)

BUILT FOR THE LONG HAUL



PRINT 12.2019

