

VOLTAGE



Not all toy haulers are created equal.

VOLTAGE

FIRST IN CLASS

THE VOLTAGE

There's a reason Voltage is the most popular toy hauler in its class. Our designers held nothing back when it came to equipping the Voltage with feature-rich amenities and ample amounts of storage. Tall ceilings, a spacious executive bedroom and a gourmet kitchen with quartz countertops set Voltage apart from all the others. It's truly first in class.



FINGERTIP CONTROL

Quiet, cool air conditioning with three individual zones let you enjoy pleasant temperatures wherever you may relax.



SOUND EVERYWHERE

Voltage packs four zones of entertainment with four LED TVs, including one in the garage and one outside. The living room features a sound bar with subwoofer.



THE DAILY MASSAGE

With controls at your side, let the rigors of the day be worked out in your heated massage furniture.





LIVING THE DREAM

Don't settle for less. Polished stainless-steel appliances not only add sleek style to your kitchen but also offer residential-sized storage space for the chef needing unlimited ingredient options.

- ▶ 12 or 18 cu. ft. stainless-steel refrigerator with pantry
- ▶ Full-sized convection microwave with rotating tray
- ▶ Full-sized 21" stainless-steel oven
- ▶ Hardwood cabinetry
- ▶ 3-burner range with upgraded burner
- ▶ Quartz countertops
- ▶ Ample counter top space
- ▶ LED lighted back splash



Voltage 3970 | Raven

ZERO-GRAVITY RAMP DOOR

Raise and lower the ramp door with just one finger. MORryde's Zero-Gravity ramp door handles as if the door is weightless, creating the safest ramp door in the industry. Now with an electric locking system and a re-designed hinging system, setup and teardown are easier than ever.



EASY-TO-LOAD



Voltage owners love our cavernous cargo areas with pass-through storage capability.

SLEEP SOUNDLY

Your memory foam mattress molds to the contours of your body, relieving pressure during sleep for complete comfort. Meanwhile, ample storage completes the master suite.

Voltage 3895 | Hazel

Voltage 4105 | Hazel



ULTIMATE COMFORT

After a day of hitting the trails, relax with the comfort of residential furniture and the luxury of built-in heated massage, LED lighting and charging stations.

Voltage 3970



BATHROOM LUXURY

A recessed shower tub, generous countertop space and a vessel bowl sink offer the convenience you need after a long day of play.

PAINT PACKAGES

With Voltage's numerous exterior paint options, you can choose the perfect look to match your taste or your truck. For more details, visit dutchmen.com/voltage/paint-packages or contact your local dealership.

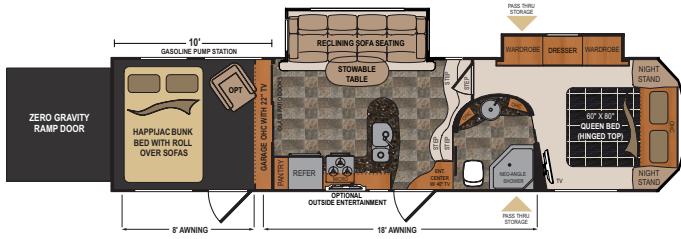
INTERIOR DÉCOR CHOICES

Hazel

Raven

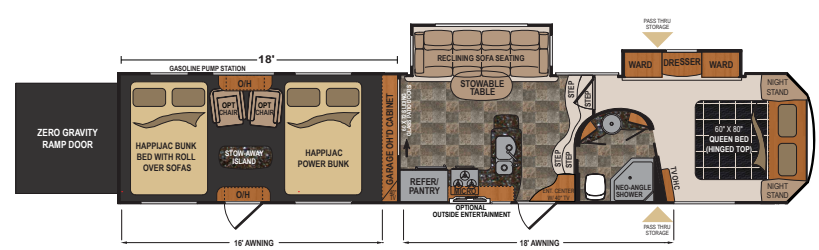
Stone





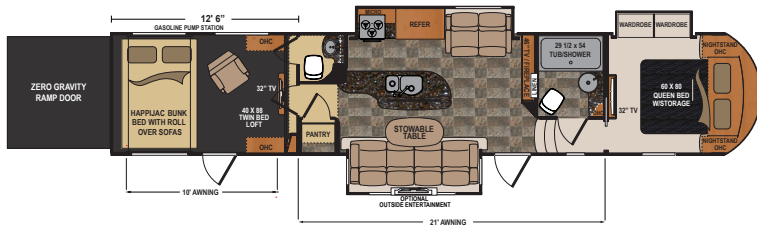
VOLTAGE FIFTH WHEEL | 3200

Ext. Length: 35' 11" Ext. Height: 13' 1" Average Shipping Weight: 13,140 Sleeps: 7



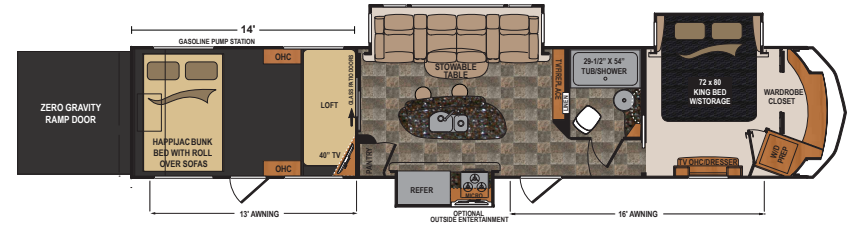
VOLTAGE FIFTH WHEEL | 3818

Ext. Length: 43' 10" Ext. Height: 13' 4" Average Shipping Weight: 15,278 Sleeps: 8



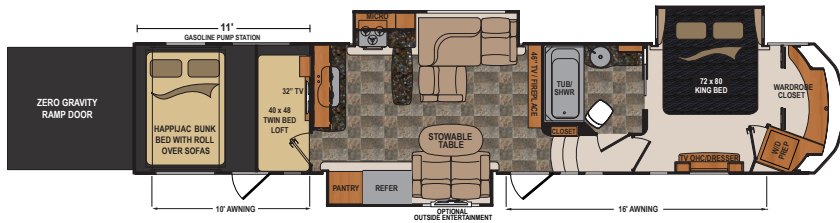
VOLTAGE FIFTH WHEEL | 3895

Ext. Length: 42' 11" Ext. Height: 13' 3" Average Shipping Weight: 15,880 Sleeps: 7



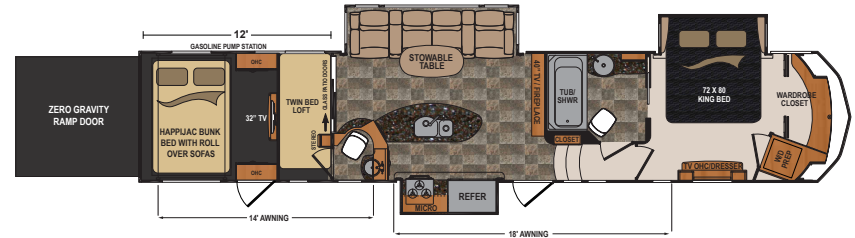
VOLTAGE FIFTH WHEEL | 3914

Ext. Length: 43' 10" Ext. Height: 13' 4" Average Shipping Weight: 16,100 Sleeps: 7



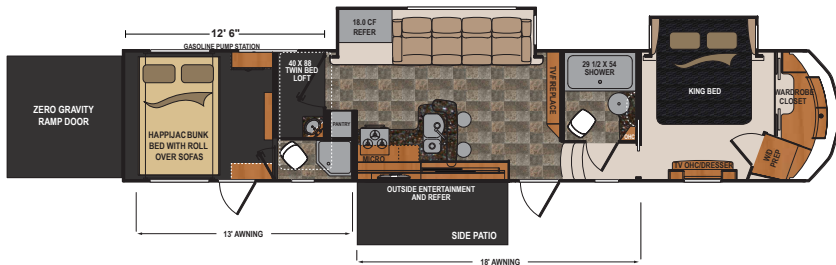
VOLTAGE FIFTH WHEEL | 3970

Ext. Length: 43' 10" Ext. Height: 13' 4" Average Shipping Weight: 16,171 Sleeps: 7



VOLTAGE FIFTH WHEEL | 3990

Ext. Length: 43' 10" Ext. Height: 13' 4" Average Shipping Weight: 16,257 Sleeps: 7



VOLTAGE FIFTH WHEEL | 4150

Ext. Length: 44' 1" Ext. Height: 13' 4" Average Shipping Weight: 16,464 Sleeps: 7

DISCLAIMER: Product information is as accurate as possible as of the brochure publication date. All features, floorplans and specifications in this brochure are subject to change without notice. Please consult Dutchmen's website at www.Dutchmen.com for current product information and specifications. Tow Vehicle Disclaimer. **CAUTION:** Owners of Dutchmen recreational vehicles are solely responsible for the selection and proper use of tow vehicles. All customers should consult with a motor vehicle manufacturer or their dealer concerning the purchase and use of suitable tow vehicles for Dutchmen products. Dutchmen disclaims any liability or damages suffered as a result of the selection, operation, use or misuse of a tow vehicle. DUTCHMEN'S LIMITED WARRANTY DOES NOT COVER DAMAGE TO THE RECREATIONAL VEHICLE OR THE TOW VEHICLE AS A RESULT OF THE SELECTION, OPERATION, USE OR MISUSE OF THE TOW VEHICLE. REFERENCE DUTCHMEN MANUFACTURING OWNERS MANUAL FOR LIMITED WARRANTY DETAILS.

VOLTAGE STANDARDS AND OPTIONS

MANDATORY FEATURES

12 cu. ft. Four-door refrigerator (3200, 3818)
 12v tank heater with interior switches
 18 Cu. Ft. Four-door refrigerator (3895, 3914, 3970, 3990, 4150)
 2nd 15,000-btu a/c in the bedroom, ducted with thermostat sensor
 2nd awning over garage entrance door
 6-point hydraulic auto-leveling system
 Central vacuum with tools and dust pan
 Exterior entertainment center with led television in lockable cabinet
 In command control system by jensen
 MORryde cre 3000 suspension
 Nitrofill (nitrogen-filled tires)
 Onan 5.5-Kilowatt gas generator
 Trailair tri-glide 21,000 pin box

LUXURY INTERIOR PACKAGE

40-46" Led main television
 Aluminum cabinet doors (select models)
 Articulating tv bracket in main living area
 Atwood 10-gal. Dsi water heater with 19.7-Gph recovery
 Atwood 3-burner range and range cover
 Bottle opener
 Dual bedroom night stands with electrical outlets
 Full-sized convection microwave with rotating tray
 Full-sized stainless steel oven
 Galley power fan with rain sensor
 Led puck lighting

MCD roller shades in main living area
 One-piece fiberglass shower with seat (select models)
 Pendant lighting
 Quartz countertops by samsung
 Residential convection microwave oven
 Residential duvet covers
 Residential furniture with led lighting and heated/massaging seats
 Residential memory foam mattress
 Residential pull out faucet
 Satellite prep in every television location
 Under bed storage with gas struts
 Unified wiring standard w/color & number codes
 Upgraded back splash with led lighting
 Yamaha sound bar with internal subwoofer and bluetooth capability

EXTERIOR PACKAGE

1" thick metal slam latch baggage doors
 16" aluminum wheels
 50' power cord with indicator lights
 50-amp service
 7,000-lb. Axles with ultra lube
 7,040-lb. Load range e-rated hd tires
 Aluminum wheel well covers
 Black tank flush
 Collapsible exterior ladder
 Dual gas tanks (40 and 30 gal.)
 Exterior convenience center with hidden water connections
 Frameless windows
 Full-size 30" entry door with screen and gas strut

Ground effects light package
 Large electric awning
 MORryde zero gravity ramp door
 Omni directional tv antenna with cable, satellite, and am fm booster
 Painted front cap
 Fuel pump station with timer switch
 Quad entry steps
 Sewer hose storage container
 Solar prep
 Spare tire with carrier
 Tinted safety-glass frameless windows
 Upgraded graphics
 Water heater bypass

GARAGE FEATURES

2,500-lb. Tie-downs
 22" diamond plate
 5' Safety-glass patio door (select models)
 Indoor/outdoor speakers (2) on/off switch
 Insulated heat and a/c ducts
 Kenwood touch-screen stereo
 Led television
 Metal ram air vents (2)
 Night shades
 Privacy curtain with tie-back (select models)
 Tuffply gas- and oil-resistant flooring
 Upgraded wood entrance door with glass insert (select models)
 Wall-to-wall dovetail storage
 Washer/dryer prep (select models)

OPTIONS

13,500 BTU Garage A/C with Power Management system
 Back up camera system
 Bathroom Power Fan with Rain Sensor and Thermostat
 Garage Power Fan with Rain Sensor and Thermostat
 Ramp Door Patio System with Entry Steps and Awning
 Three Seasons Patio Door
 Voltage Happi Jack Electric Bed and Roll Over Sofa System w/Table
 Removable Edged Cargo Carpet
 G Range Tires
 Dual Pane Safety Glass Windows
 Voltage Chair (1)
 Voltage Logo Deck Chairs (2 per box)

CUSTOM FIVE-COLOR, FULL-BODY PAINT OPTIONS

Black and blue paint
 Black and burgundy paint
 Black and green paint
 Black and orange paint
 Black and red paint
 Black and yellow paint
 Earth tone and burgundy paint
 Earth tone and burnt orange
 Gel-coat glass upgrade (included)

VOLTAGE SPECIFICATIONS

FLOORPLAN	DIMENSIONS			WEIGHTS (LBS.)			TANKS (GALS.)		
	*EXTERIOR TRAVEL LENGTH	EXTERIOR WIDTH	EXTERIOR HEIGHT (WITH A/C)	**AVERAGE SHIPPING WEIGHT	DRY HITCH WEIGHT	CARGO CARRYING CAPACITY	***FRESH WATER CAPACITY	GREY WATER CAPACITY	BLACK WATER CAPACITY
3200	35' 11"	100"	13' 1"	13,140	2,628	3,360	160	75	45
3818	43' 10"	100"	13' 4"	15,278	3,484	4,722	160	75	45
3895	42' 11"	100"	13' 3"	15,880	3,493	4,120	160	107	90
3914	43' 10"	100"	13' 4"	16,100	3,333	3,900	160	107	45
3970	43' 10"	100"	13' 4"	16,171	3,530	3,829	160	90	45
3990	43' 10"	100"	13' 4"	16,257	3,414	3,743	160	90	90
4150	44' 1"	100"	13' 4"	16,464	3,824	3,563	160	107	83

*Length is defined as the distance from the centerline of hitch pin/coupler to rear bumper of trailer. **Our weights represent how most units are built, inclusive of many commonly-ordered options. ***Fresh water capacity includes water heater capacity.

FIRST IN CLASS



Dutchmen—A North American Campground Classic.

Few manufacturers have built RVs for 25+ years, and only one has set the standard for innovation AND value. Dutchmen IS “A North American Campground Classic.”



Dutchmen®

Legendary Innovation. Trailblazing Value.

MORE STANDARD FEATURES MORE VALUE

Dutchmen RVs turn more heads on the lot and in the campground than any other. Why? While other manufacturers offer features as options, Dutchmen tends to make those same features standard. Call it “bang for the buck,” “more for your money,” or simply “more value.” **We’ve built a reputation for bringing RV owners more standard features for less money** for more than 25 years . . . and it’s a reputation we plan to keep.

PO BOX 2000 • 2164 Caragana Court • Goshen, Indiana 46527 • Sales: 574.537.0600 • www.dutchmen.com

VOL-HM0216-25.5K

3000

STRONG

NATION WIDE DEALER NETWORK

More than 300 Dutchmen dealers across North America and our industry-leading service center in Goshen, Indiana, combine for your peace of mind before, during and after the sale. Rest assured no matter where your travels take you, **the best-resourced RV manufacturing company in the world is behind you all the way.**

Scan this QR Code for a
360° view
of the Voltage interior.



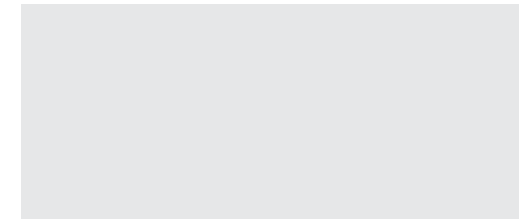
www.dutchmen.com

Visit us online to see all of the Dutchmen brands, innovative models and spacious floor plans.



At Dutchmen, quality is our standard. **Every single Dutchmen RV that comes off the line receives its own pre-delivery inspection.** Typically, a competitor performs random inspections, meaning you won’t find this commitment to quality anywhere else.

Your local dealer



From giving advice to servicing products, we consider our loyal dealers the best resource for learning about Dutchmen products.