

2020 MODEL YEAR  
FALL UPDATES

MID-PROFILE FIFTH WHEELS  
HALF-TON FIFTH WHEELS & TRAVEL TRAILERS  
[keystonerv.com/cougar](http://keystonerv.com/cougar)

# COUGAR

WESTERN



**Keystone RV  
Company**

The ultimate  
ownership experience.

2020 MODEL YEAR  
FALL UPDATES

WARRANTY FOR  
FULL TIME RVING\*

\*REFERENCE KEYSTONE RV COMPANY OWNERS MANUAL FOR LIMITED WARRANTY DETAILS

# WHAT'S NEW WITH COUGAR

Fresh for 2020, Cougar introduces a stunning, all-new brilliant white exterior with high-gloss laminated sidewalls and a cool new graphics package. Energy-efficient and on-trend, the 2020 Cougar is ready for summer.



NEW oversized, 7.5" i-Command display commander



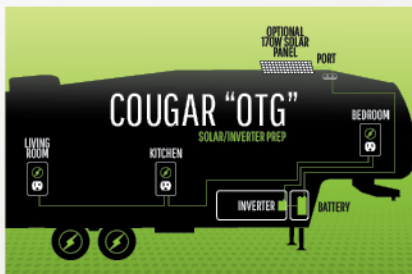
New theater seats – now with heated and massaging seats, LED Lights and built-in USB ports.



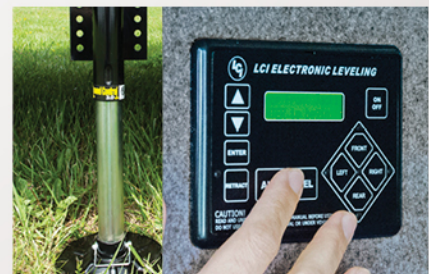
Optional slide toppers on (mid-profile fifth wheels only)



New carpet, backsplash, countertops



Cougar off-the-grid solar/inverter prep and optional OTG Solar Camping Package



Automatic leveling standard on HT Series (N/A 22RBSWE, 24SABWE, 25BHSWE).





**New seamless lavatory counter top**



**NEW upgraded brushed nickel bathroom fixtures with massaging shower head**



**Multiple 12V USB charging centers in every floorplan**



**NEW euro-style entry door latch**



**New bedspread, and bedroom window treatments**



**Furrion side-camera prep**



**NEW easy-access sliding bathroom door IPO pivot hinge door in all fifth wheels**



**NEW modern towel bar in all fifth wheel bathrooms**



**HT Series trailers now have wood blinds in living area replacing pleated shades**



**NEW slim-shade entry door window prep with upgraded glass**

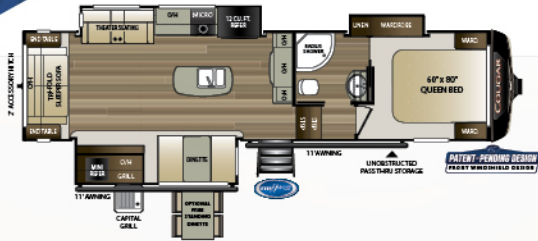


**NEW luxurious shower surround with magnetic latching door**

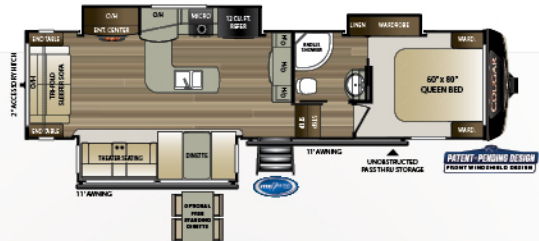
# 2020 MODEL YEAR FALL UPDATES

## Cougar

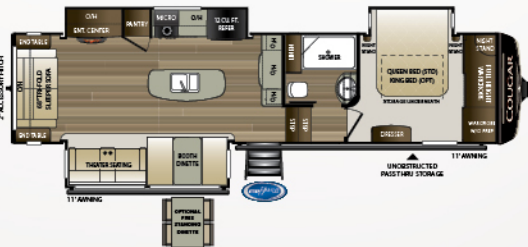
### MID-PROFILE FIFTH WHEEL FLOORPLANS



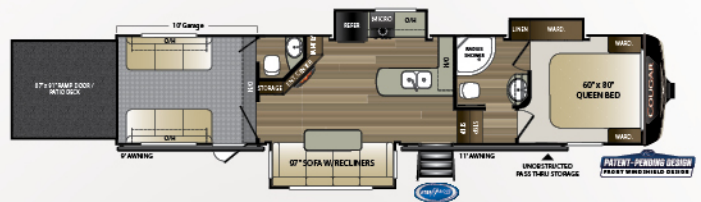
**NEW!** 302RLS | Rear living room, three slides, outside kitchen



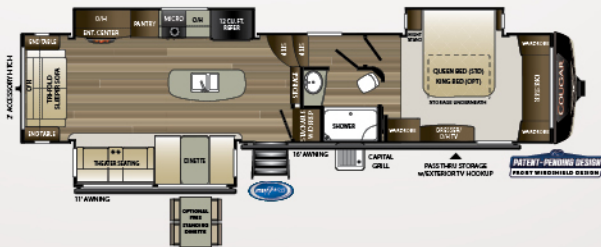
**NEW!** 307RES | Rear living room, three slides



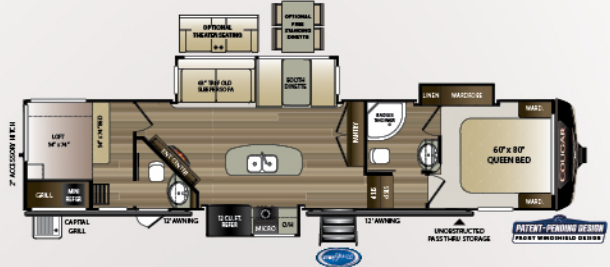
315RLS | Rear living room, three slides



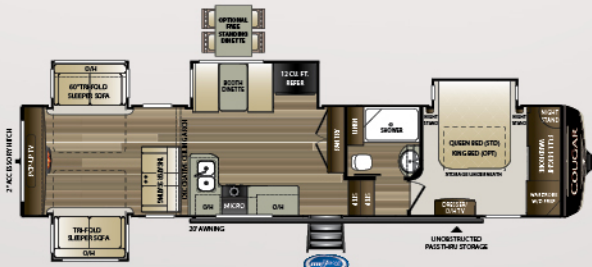
**NEW!** 353SRX | Toy hauler, rear patio deck, with 10' garage



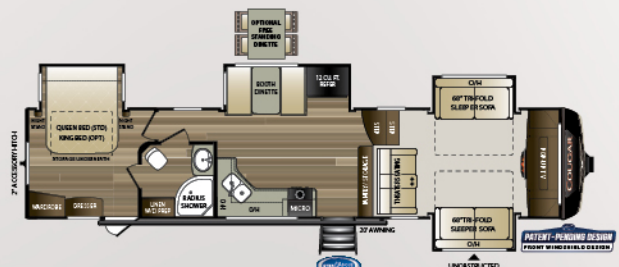
361RLW | Master suite, rear-living w/ windshield



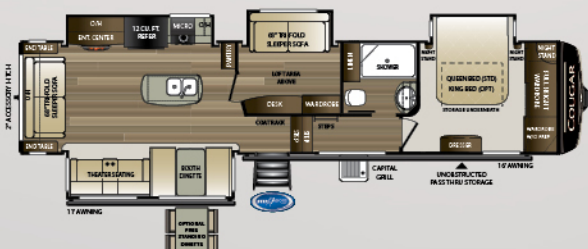
**NEW!** 364BHL | 2 bedroom, bath and a half with loft



366RDS | Rear den, four slides



367FLS | Front living room w/ windshield

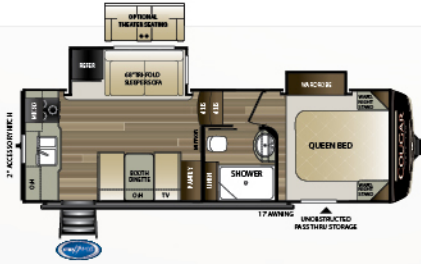


368MBI | Bonus room w/ loft

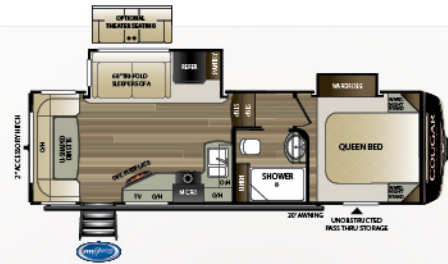


# Cougar

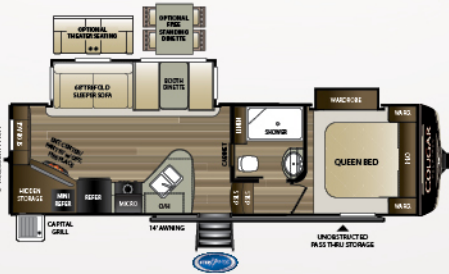
## HALF-TON HALF-TON FIFTH WHEEL FLOORPLANS



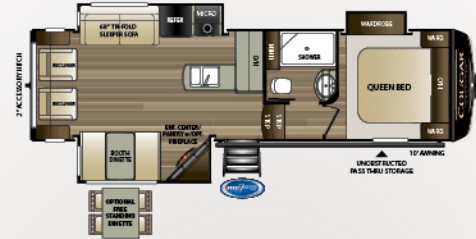
**NEW!** 23MLS | Short, rear kitchen w/ wardrobe slide



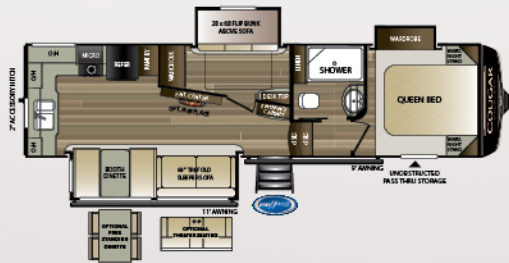
**NEW!** 24RDS | Rear dinette, two slides



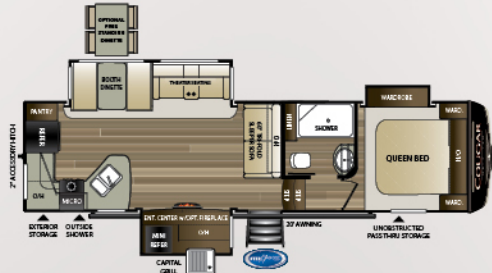
25RES | Rear entertainment, outside kitchen



27SGS | Rear living room w/ mid-entry



**NEW!** 29MBS | Rear, private double bunkhouse



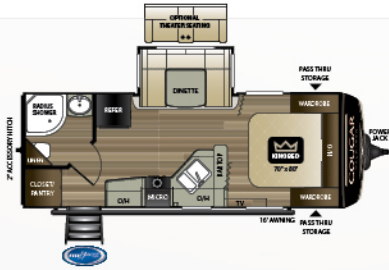
29RKS | Rear kitchen, open concept w/ outside kitchen



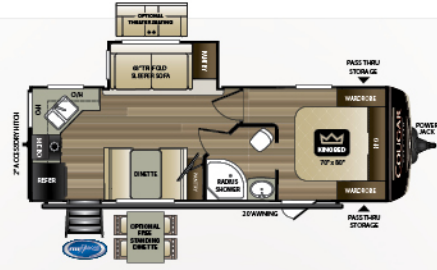
30RLS | Rear living room, gourmet kitchen



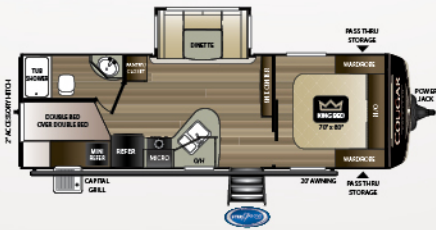
32BHS | 1 1/2 bath bunkhouse



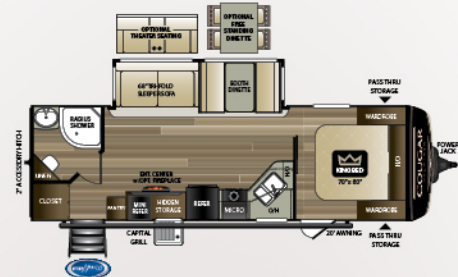
**22RBSWE** | Short rear bathroom w/ slide



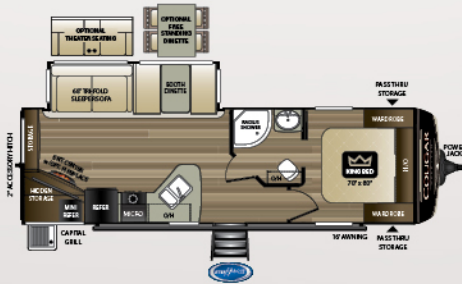
**24SABWE** | Dual entry rear kitchen w/ slide



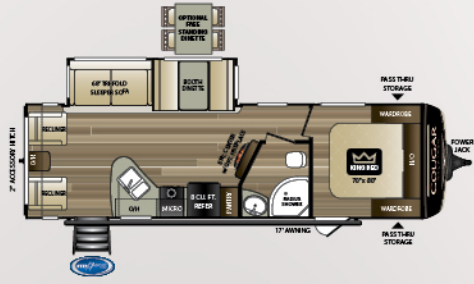
**25BHSWE** | Short double bunk house w/ outside kitchen



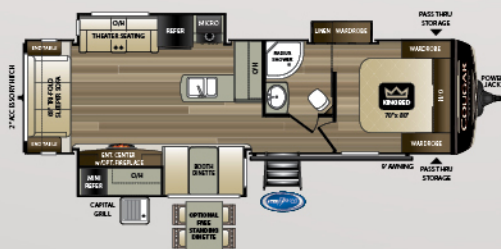
**26RBSWE** | Rear bath w/ slide and outside kitchen



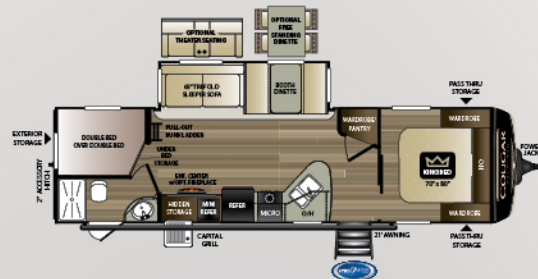
**27RESWE** | Rear entertainment w/ outside kitchen



**27SABWE** | Real living w/ side aisle bath



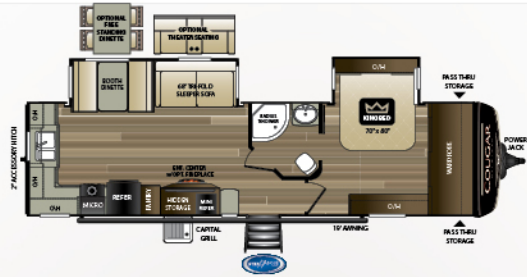
**NEW!** **29RLKWE** | Rear living room, outside kitchen, wardrobe slide



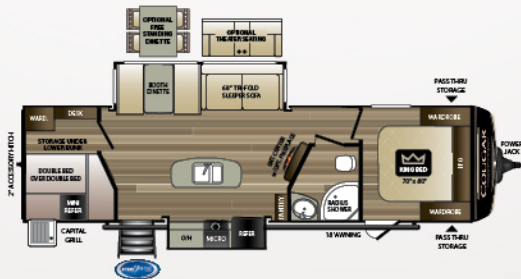
**29BHSWE** | Double bunkhouse, outside kitchen



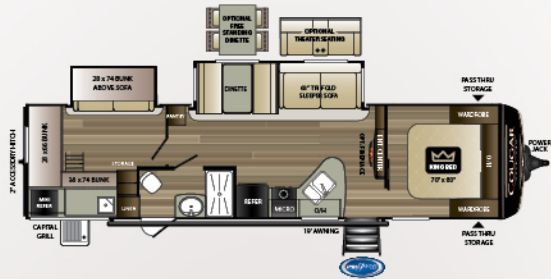
**29RLDWE** | Rear living room w/ bed slide



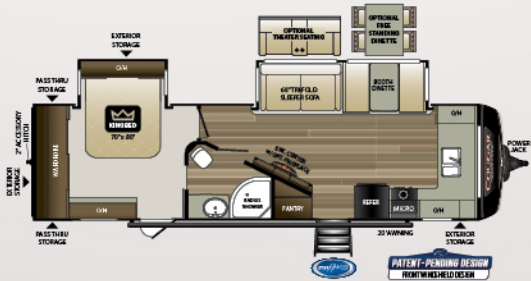
**NEW!** **30RKDWE** | Rear kitchen w/ outside kitchen



**31BHKWE** | Huge rear bunk room double slide



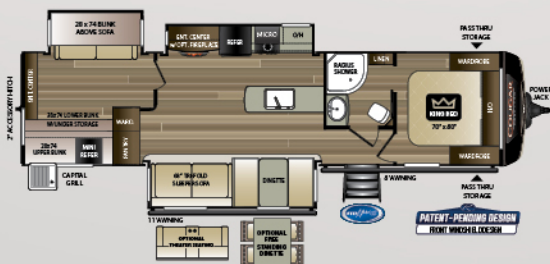
**NEW!** **32RDBWE** | Huge rear bunk room, outside kitchen



**NEW!** **29FKD** | Front kitchen, 2 slides w/ bed slide



**32RLI** | Rear living room, three slides w/ bedroom slide



**34TSB** | Three-slide bunk house w/ outside kitchen



### MID-PROFILE FIFTH WHEELS

MODEL	WEIGHT	CARRYING CAPACITY	HITCH WEIGHT	FRESH WATER	WASTE WATER	GRAY WATER	LPG	LENGTH*	HEIGHT 1-A/C	HEIGHT 2-A/C
302RLS	10080	2120	1800	81	38	76	60	34' 7"	12' 6"	13' 5"
307RES	10045	2175	1825	81	38	76	60	34' 7"	12' 6"	13' 5"
315RLS	10562	1828	1995	81	38	76	60	35' 8"	12' 6"	13' 5"
353SRX	TBD	TBD	TBD	81	76	76	60	38' 11"	13' 5"	13' 5"
361RLW	11269	2711	1980	81	38	76	60	39' 4"	12' 3"	13' 2"
364BHL	11225	2775	2200	81	76	76	60	39' 3"	13' 5"	13' 5"
366RDS	11280	2720	2400	81	38	76	60	39' 4"	12' 6"	13' 5"
367FLS	11100	2900	2455	81	38	76	60	39' 4"	12' 5"	13' 5"
368MBI	11695	2285	1980	81	38	76	60	39' 4"	12' 7"	13' 5"

### HALF-TON FIFTH WHEELS

MODEL	WEIGHT	CARRYING CAPACITY	HITCH WEIGHT	FRESH WATER	WASTE WATER	GRAY WATER	LPG	LENGTH*	HEIGHT 1-A/C	HEIGHT 2-A/C
23MLS	7185	2815	1605	60	30	60	60	26' 10"	11' 10"	12' 11"
24RDS	TBD	TBD	TBD	60	30	60	60	28' 11"	11' 8"	12' 9"
25RES	7582	2418	1505	60	30	60	60	28' 10"	11' 8"	12' 8"
27SGS	8046	2244	1495	60	30	60	60	31' 4"	11' 7"	12' 8"
29MBS	8880	2120	1680	60	30	60	60	32' 10"	11' 7"	12' 8"
29RKS	8801	1599	1605	60	30	60	60	32' 10"	11' 7"	12' 8"
30RLS	9023	1977	1545	60	30	60	60	33' 6"	11' 9"	12' 10"
32BHS	9336	2164	1570	60	60	60	60	35' 9"	11' 9"	12' 10"

### HALF-TON TRAVEL TRAILERS

MODEL	WEIGHT	CARRYING CAPACITY	HITCH WEIGHT	FRESH WATER	WASTE WATER	GRAY WATER	LPG	LENGTH*	HEIGHT
22RBSWE	5541	1659	580	60	38	76	60	25' 11"	11' 1"
24SABWE	6061	1739	640	60	38	76	60	28' 4"	11' 1"
25BHSWE	6073	1927	620	60	38	76	60	29' 4"	11' 1"
26RBSWE	6471	2329	690	60	38	76	60	29' 11"	11' 5"
27RESWE	6494	2306	650	60	38	76	60	30' 11"	11' 1"
27SABWE	6581	2219	700	60	38	76	60	31' 6"	11' 5"
29RLKWE	7500	2000	810	60	38	76	60	33' 3"	11' 5"
29BHSWE	6875	1925	820	60	38	76	60	34' 1"	11' 1"
29RLDWE	7500	2000	810	60	38	76	60	33' 3"	11' 5"
30RKDWE	7600	1900	1000	60	38	76	60	34' 9"	11' 5"
31BHKWE	7393	2107	810	60	38	76	60	34' 9"	11' 5"
32RDBWE	TBD	TBD	TBD	60	38	76	60	36' 4"	11' 4"
29FKD	7265	2235	910	60	30	60	60	33' 11"	11' 5"
32RLI	8416	2084	1165	60	30	60	60	35' 11"	11' 4"
34TSB	8563	1937	1150	60	30	60	60	37' 5"	11' 4"

DISCLAIMER: Product information is as accurate as possible as of the date of publication of this brochure. All features, floor plans, and specifications in this brochure are subject to change without notice. Please also consult Keystone's web site at [www.keystonerv.com](http://www.keystonerv.com) for more current product information and specifications. Tow Vehicle Disclaimer. CAUTION: Owners of Keystone recreational vehicles are solely responsible for the selection and proper use of tow vehicles. All customers should consult with a motor vehicle manufacturer or their dealer concerning the purchase and use of suitable tow vehicles for Keystone products. Keystone disclaims any liability or damages suffered as a result of the selection, operation, use or misuse of a tow vehicle. KEYSTONE'S LIMITED WARRANTY DOES NOT COVER DAMAGE TO THE RECREATIONAL VEHICLE OR THE TOW VEHICLE AS A RESULT OF THE SELECTION, OPERATION, USE OR MISUSE OF THE TOW VEHICLE. \*Length is defined as the distance from the centerline of hitch pin/coupler to rear bumper of trailer. Please review owner's manual prior to purchase for more information on service warranties, extended use, towing and maintenance. Owner's manuals can be found at [keystonerv.com](http://keystonerv.com).