

WESTERN EDITION
BULLET
ULTRA LITE
by Keystone



A NEW ERA IN ULTRA LITES

www.keystonerv.com/Bullet

BULLET

ULTRA LITE
by Keystone



EXTERIOR KITCHEN
(287OBSWE)



The industry's first Luxury Ultra Lite now has deeper slides and more features!



36" DEEP SLIDES



**CONVENIENCE,
COMFORT & STYLE**





248RKSWE | SHOWN IN DUNE DECOR



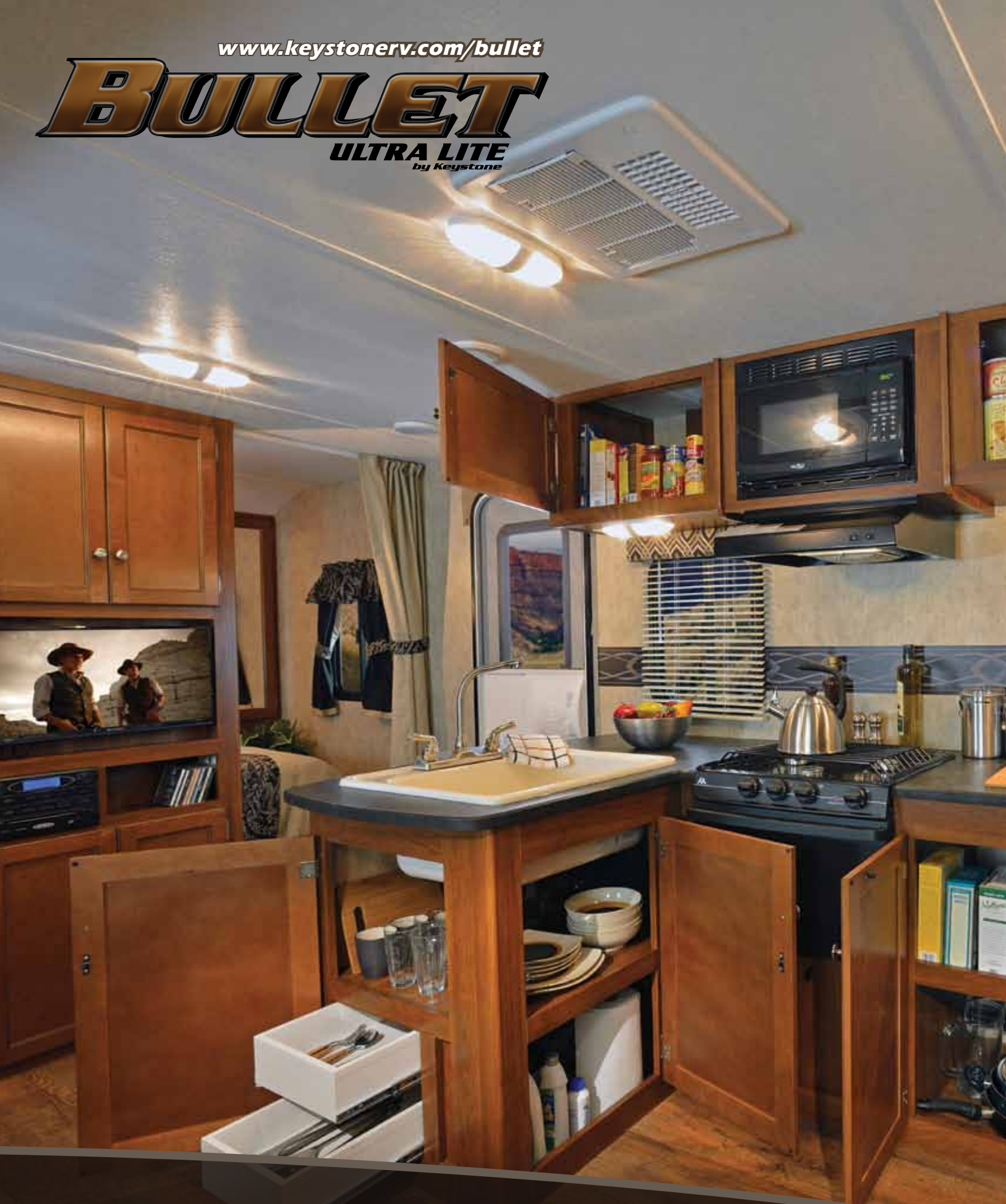
248RKSWE KITCHEN | SHOWN IN DUNE DECOR

248RKSWE BATHROOM | SHOWN IN SADDLE DECOR

www.keystonerv.com/bullet

BULLET

ULTRA LITE
by Keystone



CONVENIENCE, COMFORT & STYLE

You will truly feel at home. Bullet's careful attention to detail and thoughtful use of space result in the most livable ultra lite on the market today.



251RBSWE | SHOWN IN CHARCOAL DECOR



251RBSWE | SHOWN IN CHARCOAL DECOR



296BHSWE | SHOWN IN CHARCOAL DECOR



248RKSWE | SHOWN IN DUNE DECOR

BULLET'S TOP FEATURES

Includes more standard features that matter in light weights.



LARGEST PASS-THRU STORAGE IN CLASS (40.3 CU. FT.)



LAUNDRY CHUTE IN MASTER BEDROOM



ELECTRIC TONGUE JACK



BLACKOUT SHADES IN BUNK ROOMS



7 CU. FT. REFRIGERATOR



SYSTEMS MONITOR PANEL



9" DEEP SINGLE BASIN KITCHEN SINK (N/A 310BHS)



STORAGE UNDERNEATH THE BED IN MASTER BEDROOM



GAS STRUTS ON ENTRY DOORS



CD/DVD/AM/FM STEREO/MP3



ELECTRIC ADJUSTABLE AWNING



EXTERIOR SHOWER

BULLET

ULTRA LITE
by Keystone



LED AWNING LIGHTS



TRI-FOLD-SLEEPER SOFA



Bullet is the only ultra lite travel trailer to offer the following climate control features in all floorplans:

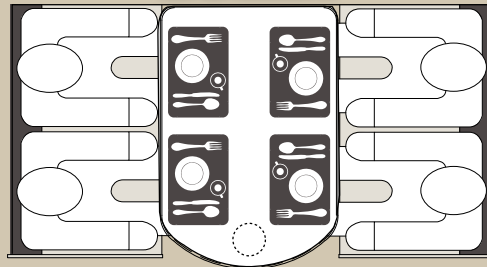
BULLET	COMPETITION
Enclosed underbelly	Exposed Tanks
2" pipe off of furnace with forced air into underbelly	Radiant Heat Only
30,000 BTU Furnace	20,000 - 25,000 BTU Furnace
Ducted Heat and A/C	Non Ducted Heat and A/C

COMPARE BULLET'S DINETTE TO THE COMPETITION



LARGE RADIUS DINETTE

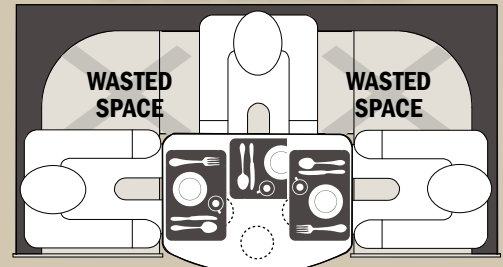
BULLET



COMFORTABLY SEATS 4 ADULTS

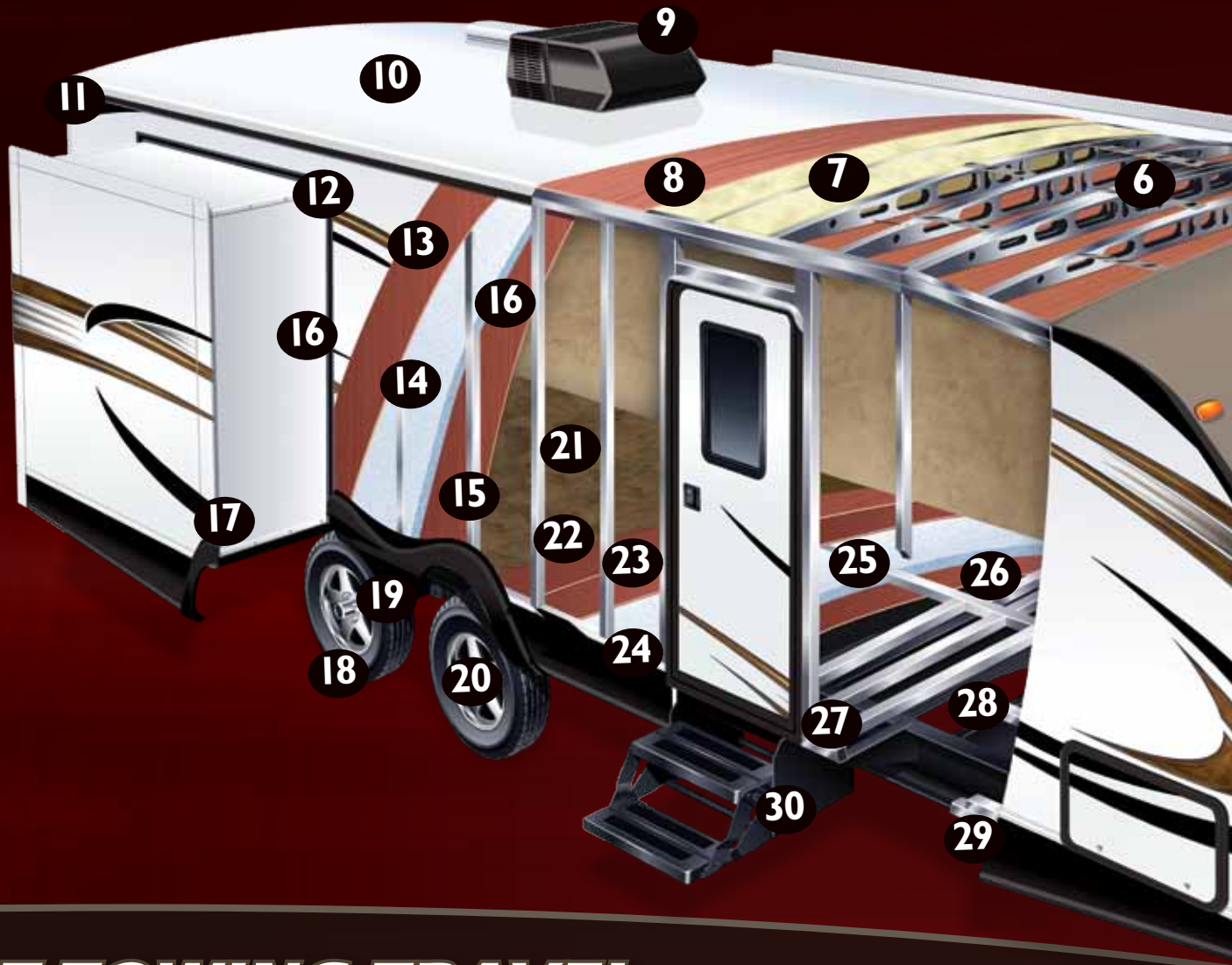
- PLENTY OF ROOM FOR 4 PLACEMATS
- ONLY NEEDS ONE TABLE SUPPORT
- CONVERTS TO 80" BED

COMPETITION



DON'T BE FOOLED! ONLY SEATS 3 ADULTS

- ONLY ENOUGH ROOM FOR 2.5 PLACEMATS
- 3 PEDESTAL SUPPORTS REDUCE LEG ROOM
- ALSO CONVERTS TO 80" BED



BEST TOWING TRAVEL TRAILER IN THE INDUSTRY

Increased MPG and Easier to tow



REAR DEPARTURE ANGLE

Increases efficiency of windflow underneath and behind the trailer



ENCLOSED UNDERBELLY

Eliminates turbulence caused by exposed frame members, holding tanks, plumbing etc.



43" WIDE STANCE AXLES

Wider base greatly reduces sway and bouncing

BULLET

ULTRA LITE
by Keystone



LIGHTWEIGHT SOLID CONSTRUCTION

- | | |
|--|--|
| 1. Quick Access LP Cover | 16. Decorative Interior Wall Board |
| 2. Integrated Dual Battery Tray | 17. Bullet's Multi Seal and Track Slide System |
| 3. Diamond Plate Stone Guard | 18. Radial Tires with Electric Breaks (4) |
| 4. Aerodynamic Front Profile | 19. Wide Stance Axle System |
| 5. Hurricane Straps | 20. Easy Lube Axles |
| 6. 5" Radius Galvanized Stamped Steel Roof Trusses | 21. Residential Stain Resistant Linoleum |
| 7. Fully Insulated Roof | 22. 1st Layer Floor Decking |
| 8. Durable Roof Decking | 23. 2nd Layer Floor Decking |
| 9. 13.5 Quick Cool Air Conditioning | 24. Hi-Density In Floor Block Foam Insulation |
| 10. One Piece TPO Walkable Roof | 25. Welded Aluminum Floor Joists |
| 11. Full Length Rain Gutter and 4" Drip Spouts | 26. 3rd Layer Floor Decking |
| 12. Smooth Fiberglass Exterior | 27. 6.5" - 8" Steel I-Beam Frame |
| 13. 1/8" Luan Wall Backing | 28. Darco Moisture Barrier Wrap |
| 14. Hi-Density Block Foam Insulation | 29. Enclosed Underbelly |
| 15. 1 1/2" Box Welded Aluminum Frame Structure | 30. Radius Entry Steps |



SAVE MONEY ON FUEL

Our lightweight floorplans are 1000-1500 lb. lighter than comparable competitors trailers



RADIUS FRONT PROFILE VS. COMPETITION

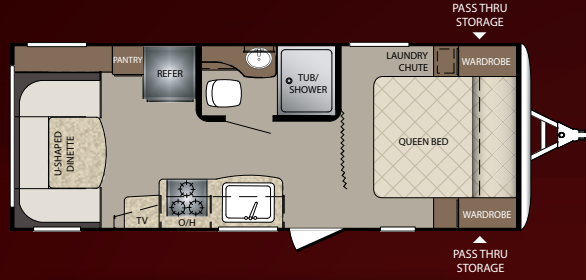
The radius front profile of the Bullet travel trailer gives the optimal contour to reduce wind resistance when traveling down the road.

WESTERN FLOOR PLANS

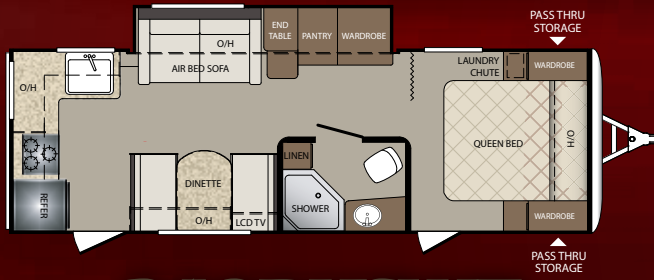
You'll find a Bullet floorplan to fit your lifestyle perfectly.



204RBSWE



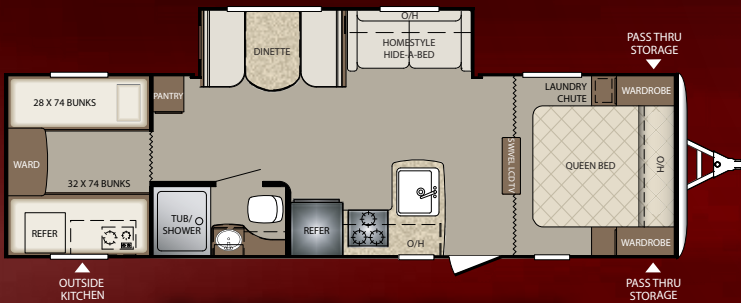
210RUDWE



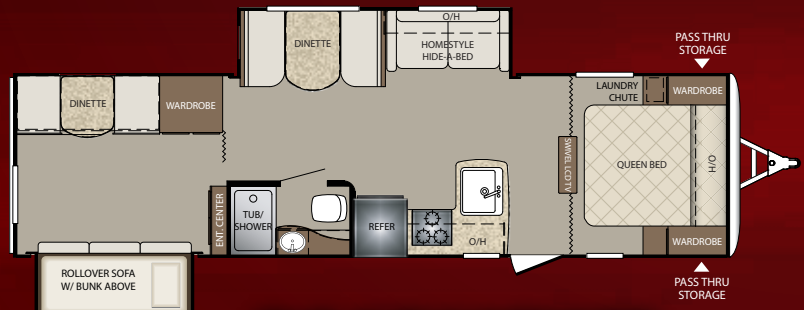
248RKSWE



251RBSWE



287QBSWE

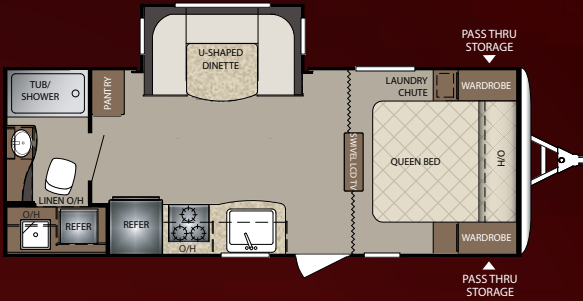


296BHSWE

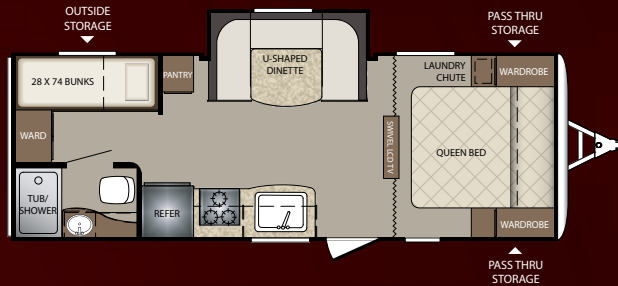
Product information is as accurate as possible at the date of publication of this brochure. Features, floor plans, and specifications are subject to change without notice. Please also consult Keystone's web site at keystonerv.com for more current product information and specifications. Tow Vehicle Disclaimer. CAUTION: Owners of Keystone recreational vehicles are solely responsible for the selection and proper use of tow vehicles. All customers should consult with a motor vehicle manufacturer or their dealer concerning the purchase and use of suitable tow vehicles for Keystone products. Keystone disclaims any liability or damages suffered as a result of the selection, operation, use or misuse of a tow vehicle. KEYSTONE'S LIMITED WARRANTY DOES NOT COVER DAMAGE TO THE RECREATIONAL VEHICLE OR THE TOW VEHICLE AS A RESULT OF THE SELECTION, OPERATION, USE OR MISUSE OF THE TOW VEHICLE.

BULLET

ULTRA LITE
by Keystone



212RBSWE



230BHSWE



272BHSWE



285RLSWE

WEIGHTS & MEASUREMENTS

TRAVEL TRAILERS	204RBSWE	210RUDWE	212RBSWE	230BHSWE	248RKSWE	251RBSWE	272BHSWE	285RLSWE	287QBSWE	296BHSWE
SHIPPING WEIGHT	3846	TBD	4479	4512	4923	5021	5166	5490	5626	5987
CARRYING CAPACITY	2154	2330	2321	2488	1577	2479	2404	2080	1974	1613
HITCH WEIGHT	350	TBD	490	530	500	500	570	570	660	720
EXTERIOR LENGTH	23' 11"	25' 5"	25' 6"	27' 0"	28' 10"	29' 1"	30' 9"	32' 7"	32' 10"	34' 10"
EXTERIOR WIDTH	8'	8'	8'	8'	8'	8'	8'	8'	8'	8'
EXT. HEIGHT - A/C TOP	10' 3"	10' 3"	10' 3"	10' 3"	10' 3"	10' 3"	10' 3"	10' 5"	10' 5"	10' 5"
FRESH WATER (GAL.)	43	43	43	43	43	43	43	43	43	43
WASTE WATER (GAL.)	30	30	30	30	30	30	30	30	30	30
GRAY WATER (GAL.)	30	30	30	30	60	30	30	30	30	30
LP CAPACITY (LBS.)	40	40	40	40	40	40	40	40	40	40

STANDARDS & OPTIONS

CONSTRUCTION STANDARDS

- Aggressive Front Profile for Increased Towability
- Aluminum Framed Front, End and Side Walls
- Laminated Fiberglass Exterior Side Walls
- 2" Thick Laminated Aluminum Floor
- In-Frame Fresh, Grey, and Black Water Tanks
- 6.5" -8" Steel I-Beam Frame with Welded Outriggers
- ¼" ABS Enclosed Underbelly
- Darco Moisture Barrier
- One Piece TPO Roof
- E-Z Lube Axles
- Electric Brake System (4 wheels)
- R-11 Insulation in Floor
- R-7 Insulation in Sidewalls
- R-11 Insulation in Roof

EXTERIOR CAMPING PACKAGE

- Wide Stance E-Z Lube Axles
- 6 Gallon Gas/Electric DSI Water Heater
- Radius Entry Door with Gas Strut
- Outside Speakers
- Outside Shower (Hot & Cold Water)
- Tinted Safety Glass Windows
- 4 Stabilizer Jacks
- TV Antenna & Cable Hook-Up
- LED Illuminated Electric Awning w/ Adjustable Arms
- Radial Tires

EXTERIOR FEATURES

- Dual Propane Tanks with Cover
- Front Diamond Plate
- In Frame Dual Battery Rack
- Oversized Exterior Pass Thru Storage with Lighting
- Contoured Fender Skirts for Increased Air-Flow
- LP Quick Connect
- Amber Patio Light
- Spare Tire
- Extended 4" Down Spouts
- Triple Entry Steps
- Oversized Grab Handle (main door)

INTERIOR CAMPING PACKAGE

- 13.5 BTU Ducted A/C
- Night Shades
- CD/DVD/AM/FM Stereo with Aux & I-Pod Hookup
- 24" LCD TV
- Microwave
- 7 cu./ft. Refrigerator
- 3 Burner High Output Range
- 9" Deep Oversized Single Basin Sink with High Rise Faucet (N/A 310)
- Glazed Hardwood Cabinet Doors
- Foot Flush Toilet
- Tub Surround with Shelves
- Full Extension Drawer Glides

INTERIOR FEATURES

- 78" Interior Height
- Fiberglass Reinforced Flooring
- Swivel Rockers (Per Floor Plan)
- Residential Style Furniture
- Water Heater-By-Pass for Winterization
- Night Shades in Living Area
- 17" Oven
- Decorative Wall Border
- Radius Dinette

BATHROOM

- Towel Hooks
- Deluxe Curved Shower Curtain
- Power Vent Fan
- Solid Wood Medicine Cabinet
- Linen Storage

MASTER BEDROOM

- Upgraded Memory Foam Mattress
- Dual 110V Outlets
- Mirrored Wardrobes
- Laundry Chute
- Under Bed Storage
- Full Blackout Window Treatments
- Individual Reading Lights

BUNK ROOMS

- Cable & TV Hookups (Per Floorplan)
- Full Blackout Window Treatments
- Oversized Wardrobe with Rod (Some Floor Plans)

THERMAL PACKAGE

- Heated & Enclosed Underbelly
- 2" Pipe off of Furnace to Underbelly
- 30K BTU Furnace & Residential Heat Ducts



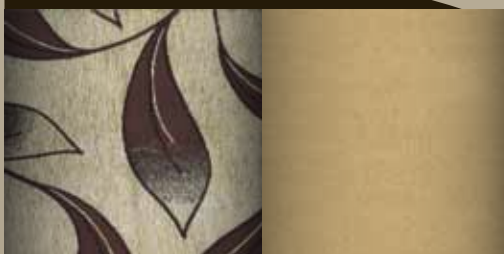
SAFETY EQUIPMENT

- Carbon Monoxide Detector
- Smoke Alarm
- Fire Extinguisher
- Electric Brakes
- Safety Chains
- Tinted Safety Glass Windows
- Egress Windows (Fire Escape)
- GFI Electrical Outlets

OPTIONS

- Bumper Mounted Aussie Grill (N/A 286QBS & 308BHS)
- Champagne Fiberglass Exterior
- 15K A/C
- Aluminum Wheels
- Upgraded Tri-Fold Sleeper Sofa in Place of Sleeper Sofa (N/A 207RBS & 248RKS)

DUNE



SADDLE



CHARCOAL



YOUR LOCAL DEALER:

LEARN MORE



www.keystonerv.com/bullet

BULLET
 ULTRA LITE
 by Keystone

 **Keystone RV Company**
www.keystonerv.com

2642 Hackberry Drive | PO Box 2000
 Goshen, IN 46527-2000
 (574) 535-2100