

WESTERN
EDITION

BULLET

CROSSFIRE | *Ultra Lite*



PREMIER

— *ULTRA LITE BY BULLET* —



PREMIER | BULLET | CROSSFIRE

BUILDING A LEGACY



When Cole Davis founded Keystone RV in 1996 his vision was clear: Build a quality RV loaded with features priced thousands less than other RVs on the market. To accomplish his goal, Cole built a strong team, focused on keeping overhead low, and empowered employees closest to the customer to make decisions. Within a few short months after opening the doors, Keystone produced its very first camper. Delivering big on quality, features and value, the public fell in love and a star was born.

As customers appetite skyrocketed, new Keystone models were added to satisfy growing customer demand. Along with this tremendous growth came the need for expanded production. To meet this need, more manufacturing plants were built and staffed. By the beginning of 2000, Keystone was leading the industry in fifth wheel and travel trailer sales. Today, Keystone RV Company has grown to encompass over 1 million square feet of manufacturing space with facilities in Goshen, Indiana and Pendleton, Oregon. While Keystone is no longer the small "start up" we once were, our mission has remained true to Cole's vision—"Do the job right and make sure we deliver a quality product every time."



BULLET

FROM THE BEGINNING, THE VISION HAS BEEN SIMPLE: PROVIDE CUSTOMERS AN ULTRA LITE TRAVEL TRAILER WITH UNSURPASSED QUALITY AND VALUE.

In 2009, this became reality with the Keystone Bullet. After extensive market research, rigorous product development and design the first Bullet Ultra Lite was constructed. In a few short years, Bullet Ultra Lite grew from its humble beginnings to become the #1 ultra lite travel trailer in North America.

Shortly thereafter, Keystone RV launched Premier - the industry's first luxury ultra lite. Staying true to its roots, Premier took the ultra lite segment to the next level. Still unrivaled today, Premier provides more luxury features than any other ultra lite. Bullet's innovation continued in 2015 with the launch of Bullet Crossfire, and again in 2017 with the Colt by Bullet. **Today, the vision remains the same.**

TRUSTED RESULTS

BULLET #1

#1 ULTRA LITE TRAVEL TRAILER IN NORTH AMERICA 2016



RVDA QUALITY CIRCLE AWARD RECIPIENT 7 YEARS

TABLE OF CONTENTS



BULLET CROSSFIRE



PAGES 3-4



BULLET ULTRA LITE



PAGES 5-10



PREMIER ULTRA LITE



PAGES 11-16

BULLET

CROSSFIRE

by Keystone

BULLET CROSSFIRE TRAVEL TRAILERS



2200BH SHOWN IN SADDLEBROOK DECOR



BULLET CROSSFIRE TOP FEATURES:

- 13,500 BTU Roof A/C
- Electric Awning
- Two 20 lb. Propane Tanks w/Cover
- Spare Tire
- LED Lighting
- 6 cu. ft. Gas/Electric Refrigerator
- Night Shades
- Large Dual Basin Sink
- Full Bath w/Shower Surround
- High-Rise Residential Faucet
- Two Burner Glass Top Range



1900RD KITCHEN/DINETTE



2200BH MURPHY BED

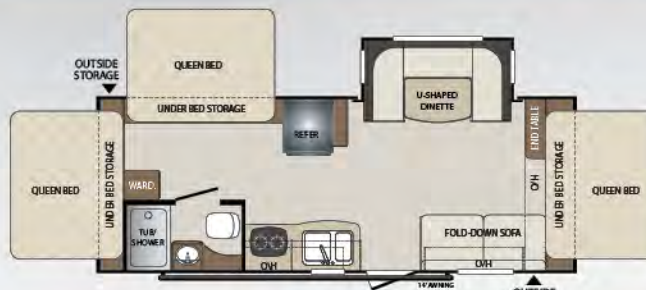


3 BULLET CROSSFIRE GIVES YOU ALL OF THE CAMPING EXPERIENCE WITHOUT THE LARGE PRICE.

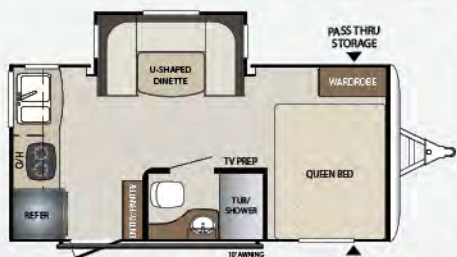
BULLET CROSSFIRE FLOOR PLANS



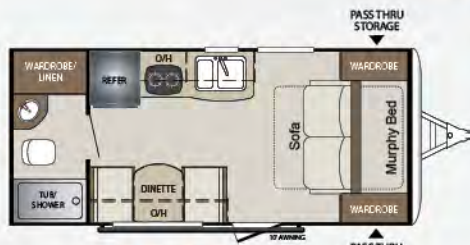
1650EX



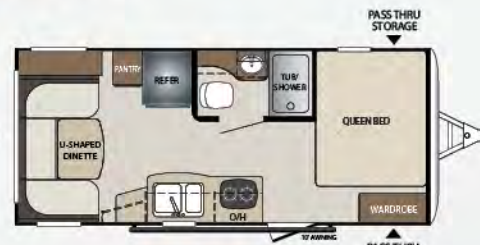
2190EX



1750RK NEW



1800RB



1900RD



2070BH



2200BH NEW

CROSSFIRE WEIGHTS AND MEASUREMENTS

MODEL	SHIPPING WEIGHT	CARRYING CAPACITY	HITCH	LENGTH*	HEIGHT	FRESH WATER	WASTE WATER	GRAY WATER	LPG	AWNING
1650EX	3405	1295	435	19' 8"	10' 5"	43	30	30	40	10'
1750RK	3640	1060	400	20' 6"	10' 5"	43	30	60	40	10'
1800RB	3260	1140	440	21' 6"	10' 5"	43	30	30	40	10'
1900RD	3370	1330	485	22' 1"	10' 5"	43	30	30	40	10'
2070BH	3776	1624	420	23' 10"	10' 4"	43	30	30	40	14'
2190EX	4439	1861	560	25' 1"	10' 4"	43	30	30	40	15'
2200BH	3975	2325	425	25' 4"	10' 4"	43	30	30	40	15'

*Length is defined as the distance from the centerline of the hitch pin/coupler to rear bumper of the trailer. SEE DISCLAIMER ON BACK PAGE.

BULLET

ULTRA LITE
by Keystone



243BHS SHOWN IN GUNMETAL DECOR



EASIER TO TOW WITH THE LATEST MORE FUEL EFFICIENT CROSSOVERS, SUV'S AND TRUCKS; THE BULLET ULTRA LITE TRAVEL TRAILER HERALDS IN A NEW GENERATION OF RV'S.

Sleek and smooth on the outside and loaded with features and conveniences inside, the Bullet Ultra Lite will set you free to explore the open road.



243BHS BEDROOM



243BHS SHOWN IN GUNMETAL DECOR



243BHS U-SHAPED DINETTE SHOWN IN GUNMETAL DECOR



OUTSIDE KITCHEN (243BHS, 257RSS, 261RBS, 277BHS, 287QBS AND 308BHS)

BULLET ULTRA LITE EXTERIOR FEATURES



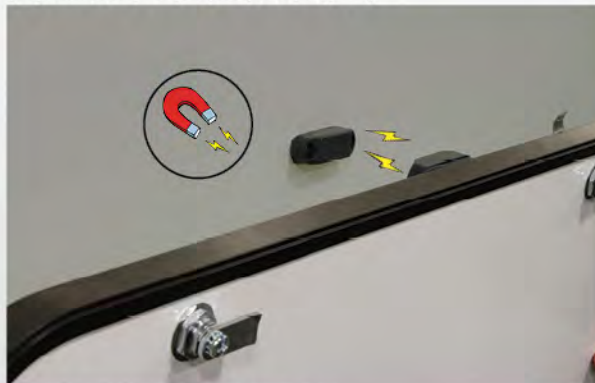
5 Year Warranty on Vomela Exterior Graphics
(3 year in AZ, CA, FL, NV, NM, TX, UT)



Power Tongue Jack



The Ultimate Thermal Package: Enclosed Underbelly with Ducted Heat, Radiant Heat and a 30K BTU Furnace



Magnetic Baggage Door Catches



Power Adjustable Awning with LED Lights



43" Wide Stance Dexter Axles with 15" Wheels



Solar Prep



Triple Easy Entrance Steps



All New Molded Fiberglass Front Cap w/LED Lights

BULLET ULTRA LITE INTERIOR FEATURES



68" Tri-Fold Sofa with Hide-A-Bed



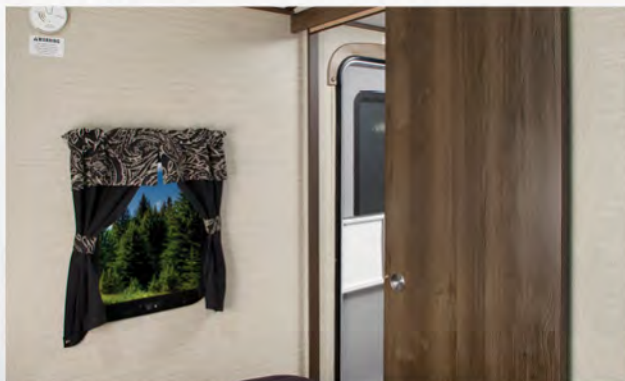
Storage Doors Underneath Dinette Seating



Laundry Chute in Master Bedroom



Large Panoramic Windows with Dual Slide Room End Windows for Cross Ventilation



Solid Wood Entry Doors to Bedroom and Bunkrooms



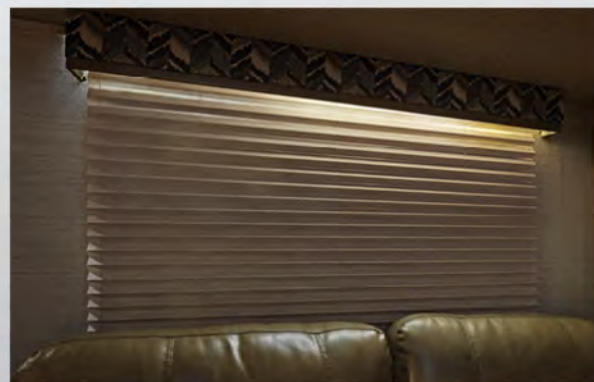
Flush Mount Range with Glass Top



Porcelain Foot Flush Toilet



Large Stainless Steel Single Basin Kitchen Sink w/ Single Lever High-Rise Faucet



LED Window Valance Night Lights in Slider Room and LED Backlight Above Entertainment Center

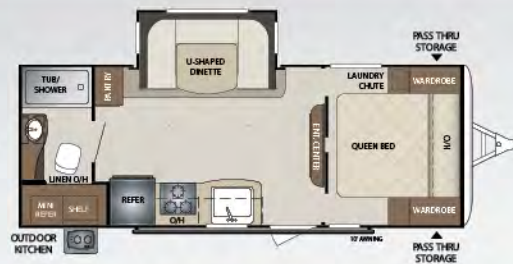
BULLET ULTRA LITE FLOOR PLANS



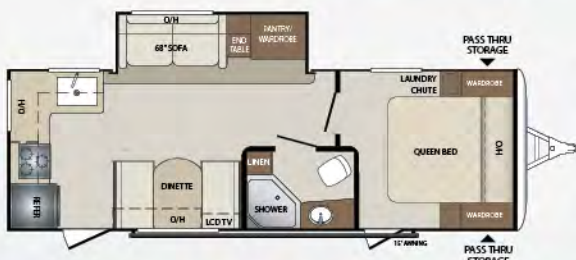
202BHSWE



210RUDWE



212RBSWE



248RKSWE



257RSSWE NEW



261RBSWE NEW



277BHSWE



287QBSWE

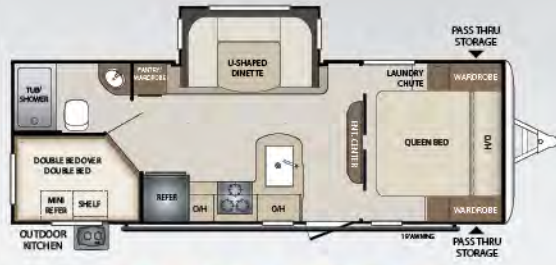


308BHSWE

BULLET ULTRA LITE FLOOR PLANS



220RBIWE



243BHSWE



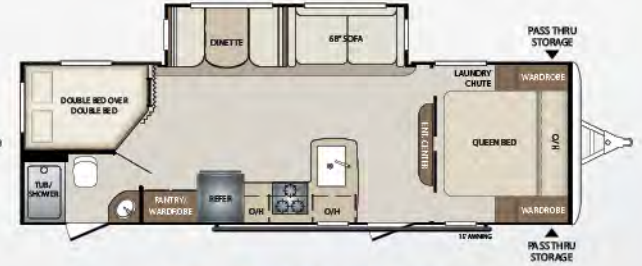
247BHSWE



265RBIWE



269RLSWE



272BHSWE

BULLET WEIGHTS AND MEASUREMENTS

MODEL	SHIPPING WEIGHT	CARRYING CAPACITY	HITCH	LENGTH*	WIDTH	HEIGHT	FRESH WATER	WASTE WATER	GRAY WATER	LP6	AWNING
202BHSWE	3976	2024	420	24' 4"	8'	10' 10"	43	30	30	40	14'
210RUDWE	4072	2328	455	25' 11"	8'	10' 10"	43	30	30	40	15'
212RBSWE	4676	2124	510	26' 0"	8'	10' 10"	43	30	30	40	10'
220RBIWE	4784	1616	500	26' 1"	8'	10' 10"	43	30	30	40	15'
243BHSWE	4912	1588	525	28' 4"	8'	10' 10"	43	30	30	40	19'
247BHSWE	4862	2138	515	28' 10"	8'	10' 10"	43	30	30	40	15'
248RKSWE	5020	1480	552	29' 4"	8'	10' 10"	43	30	60	40	15'
257RSSWE	5222	2078	596	29' 11"	8'	10' 10"	43	30	60	40	19'
261RBSWE	TBD	TBD	TBD	TBD	TBD	TBD	TBD	TBD	TBD	TBD	TBD
265RBIWE	5744	1856	600	30' 10"	8'	10' 10"	43	30	60	40	15'
269RLSWE	5426	2174	650	31' 11"	8'	10' 10"	43	30	30	40	15'
272BHSWE	5384	2216	600	31' 3"	8'	10' 10"	43	30	30	40	15'
277BHSWE	5470	2130	605	32'	8'	10' 10"	43	30	60	40	20'
287QBSWE	5870	1730	675	33' 4"	8'	10' 10"	43	30	30	40	15'
308BHSWE	6646	1354	780	36'	8'	10' 10"	43	30	30	40	19'

*Length is defined as the distance from the centerline of the hitch pin/coupler to rear bumper of the trailer. SEE DISCLAIMER ON BACK PAGE.

PREMIER

— ULTRA LITE BY BULLET —



26RBPR SHOWN IN GUNMETAL DECOR WITH OPTIONAL TABLE AND CHAIRS



**THE INDUSTRY'S FIRST LUXURY
LIGHTWEIGHT TRAVEL TRAILER.**

Premier offers luxury, progressive styling, and high impact features all at a weight & price never seen before.



OUTSIDE KITCHEN AVAILABLE ON MOST MODELS



29RKPR KITCHEN



26RBPR SHOWN IN GUNMETAL DECOR WITH OPTIONAL FREE-STANDING DINETTE



29RKPR DUAL ENTRY BATHROOM

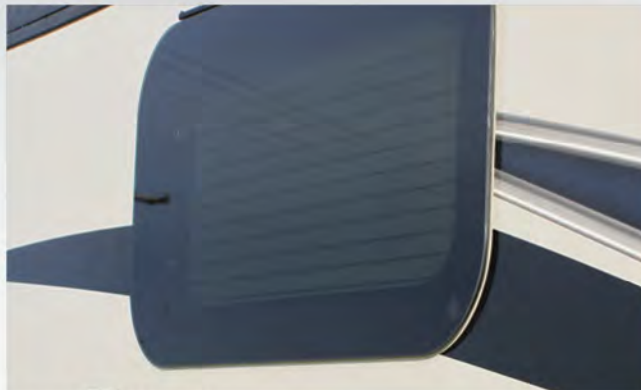


29RKPR SHOWN IN SADDLEBROOK DECOR

PREMIER EXTERIOR FEATURES



Full Fiberglass Automotive Painted Cap with LED Docking Lights



Tinted Frameless Privacy Windows



The Ultimate Thermal Package: Enclosed Underbelly with Ducted Heat, Radiant Heat and a 30K BTU Furnace



Magnetic Baggage Door Catches



Power Adjustable Awning with LED Lights



43" Wide Stance Dexter Axles



Slam Latch Baggage Doors



Triple 9" Aluminum Easy Step Entrance



TPO Roll Over Roof

PREMIER INTERIOR FEATURES



Vaulted Ceiling with 6' 11" Interior Height



Stor-Mor Drawers Under Booth Dinette



Laundry Chute in Master Bedroom



LG Solid Surface Countertops in Kitchen



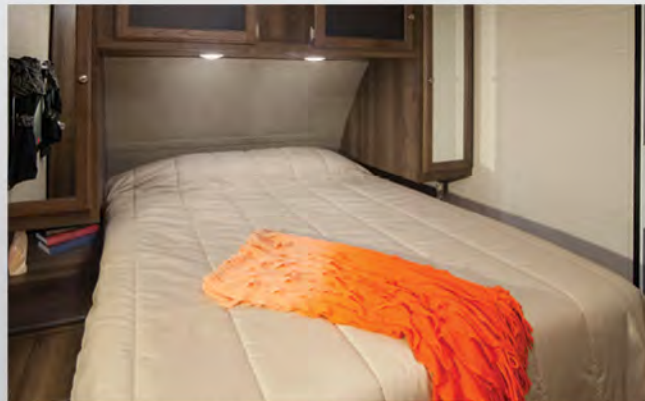
8 cu. ft. Refrigerator



LED Window Valance Night Lights in Slider Room and LED Backlight Above Entertainment Center



LED Puck Lights



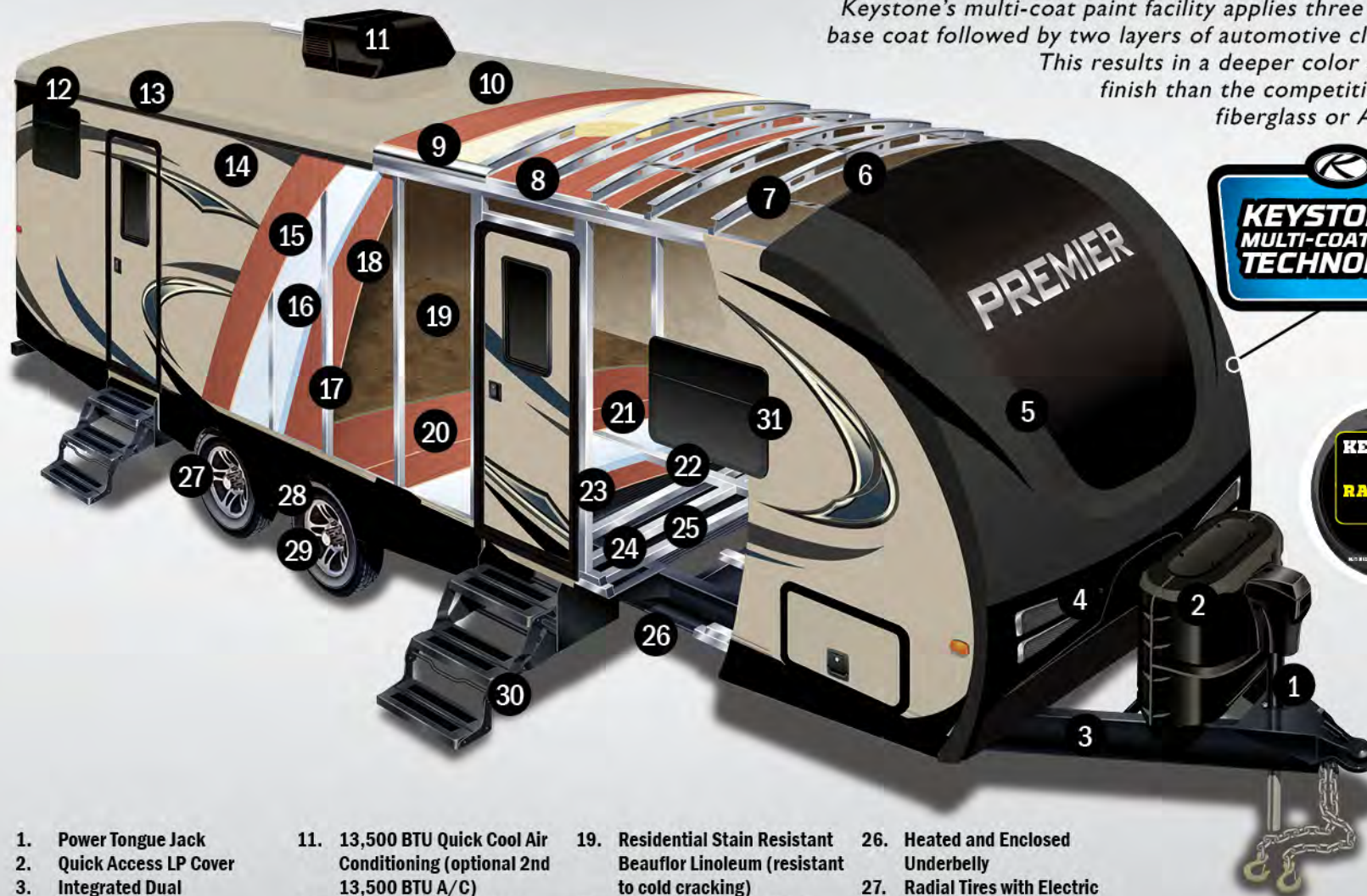
60" x 80" Residential Queen Size Beds



Stainless Steel Single Basin Sink with Pull-Down Sprayer Faucet

PREMIER CONSTRUCTION

Keystone's multi-coat paint facility applies three layers of base coat followed by two layers of automotive clear coat. This results in a deeper color & shinier finish than the competitions dyed fiberglass or ABS caps.



- | | | | |
|--|--|--|---|
| 1. Power Tongue Jack | 11. 13,500 BTU Quick Cool Air Conditioning (optional 2nd 13,500 BTU A/C) | 19. Residential Stain Resistant Beauflor Linoleum (resistant to cold cracking) | 26. Heated and Enclosed Underbelly |
| 2. Quick Access LP Cover | 12. Full Length Rain Gutter and 4" Drip Spouts | 20. Plyveneer Floor Decking (water resistant) | 27. Radial Tires with Electric Brakes (4) |
| 3. Integrated Dual Battery Tray | 13. Smooth Roof Edge | 21. Hi-Density Block Foam Insulation in Floor | 28. 43" Wide Stance Axles |
| 4. LED Docking Lights and Driving Roof Lights | 14. Smooth Fiberglass Exterior | 22. Double Welded Aluminum Floor Joists | 29. Easy Lube Axles |
| 5. Painted Radius Fiberglass Front Cap | 15. 1/8" Luan Wall Backing | 23. 3rd Layer Floor Decking | 30. Triple Entry Radius Entry Steps |
| 6. 5" Radius Galvanized Stamped Steel Roof Trusses | 16. Hi-Density Block Foam Insulation | 24. 7.5" - 10.5" Steel Z-Beam Frame | 31. Frameless Jalousie Tinted Windows |
| 7. Hurricane Straps | 17. Double Box Welded Aluminum Sidewall Frames | 25. Darco Vapor Barrier Wrap | |
| 8. Fully Insulated Roof | 18. Decorative Interior Wall Board | | |
| 9. Durable Roof Decking | | | |
| 10. One Piece TPO Roof | | | |

PREMIER FLOOR PLANS



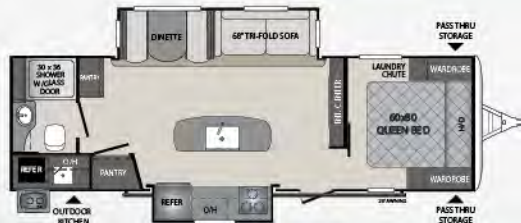
19FBPR



22RBPR



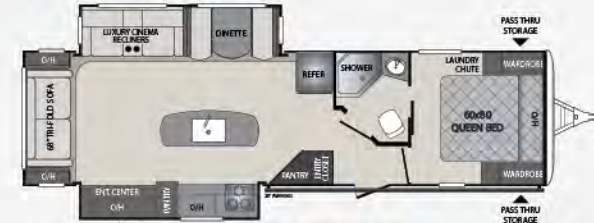
24RKPR



26RBPR



29RKPR



30RIPR



31BKPR



34BHPR



34RIPR NEW

PREMIER WEIGHTS AND MEASUREMENTS

MODEL	SHIPPING WEIGHT	CARRYING CAPACITY	HITCH	LENGTH*	WIDTH	HEIGHT	FRESH WATER	WASTE WATER	GRAY WATER	LPG	AWNING
19FBPR	4260	2240	480	24' 3"	8'	11'	43	30	30	40	12'
22RBPR	4850	1650	590	26' 11"	8'	11'	43	30	30	40	15'
24RKPR	5465	2035	655	29' 6"	8'	11'	43	30	60	40	15'
26RBPR	6030	1470	755	32'	8'	11'	43	30	60	40	20'
29RKPR	6050	1550	685	34' 5"	8'	11' 1"	43	30	60	40	15'
30RIPR	6835	1365	865	35' 11"	8'	11' 2"	43	30	60	40	20'
31BKPR	6695	2105	880	36' 5"	8'	11' 4"	43	30	30	40	19'
34BHPR	7025	1775	820	38' 1"	8'	11' 4"	43	30	60	40	19'
34RIPR	7515	1885	1015	38' 3"	8'	11' 4"	43	30	60	40	12'

*Length is defined as the distance from the centerline of the hitch pin/coupler to rear bumper of the trailer. SEE DISCLAIMER ON BACK PAGE.



WIRED FOR PERFORMANCE

THE ONLY TOWABLE MANUFACTURER TO INCORPORATE COLOR-CODED AND NUMBERED ELECTRICAL WIRING ON ALL PRODUCTS

- Creates a clean, well organized wiring layout
- Makes it easy to trace electrical circuits and saves troubleshooting time



SUPERCHARGED A/C COOLING

TUF-LOK THERMOPLASTIC COUPLERS FORM A PERMANENT, CRUSH-RESISTANT SEAL IN YOUR AIR-CONDITIONING DUCT

- Securely joins ductwork and air-conditioning units
- Crush-resistant design won't pull apart due to rough roads, heat and stress
- Drastically reduces chilled-air leaks to boost cooling efficiency and comfort



IN-FLOOR RESIDENTIAL HEAT-DUCTS

RESIDENTIAL IN-FLOOR HEAT-DUCT SYSTEM JUST LIKE IN YOUR HOME

- In-floor, hot air vents spaced for greatest comfort
- Distributes heat evenly and warms the floor

BUILT FOR THE LONG HAUL



INNOVATION THAT STARTS WITH A SOLID FOUNDATION

WWW.KEYSTONERV.COM  **Keystone RV Company**

110



110 RVDA QUALITY CIRCLE AWARDS

- Keystone Brands have earned 110 DSI Quality Circle Awards since 2007

7 LAYERS OF PROTECTION



MOST CAPS ARE FULLY PAINTED AND CLEAR-COATED IN OUR IN-HOUSE STATE OF THE ART PAINT FACILITY

- Backed by 3-year fade and chalk limited warranty



TRU-FIT TECHNOLOGY

TRU-FIT FIVE-POINT SLIDE ROOM CONSTRUCTION BACKED BY THE INDUSTRY'S-BEST 3-YEAR LIMITED STRUCTURAL WARRANTY

- Rain channels direct rain away from the slide openings
- Exterior bulb-seals in a locking track stay secure through extreme heat and cold
- Composite slide-room "glide" bar enables the room to move with no binding
- Reinforced roof, walls and floor
- Beefed-up aluminum header above slide room for greater strength



	CROSSFIRE	BULLET	PREMIER
CONSTRUCTION STANDARDS			
Aggressive Front Profile for Increased Towability	●	●	●
Aluminum Framed Front, Rear, and Side Walls	●	●	●
Aluminum Framed Slideouts	●	●	●
Laminated Fiberglass Exterior Side Walls	●	●	●
2" Thick Laminated Aluminum Floor	●	●	●
Darco Moisture Barrier	●	●	●
One Piece TPO Roof	●	●	●
E-Z Lube Dexter Axles	●	●	●
Electric Brake System (4 wheels)	●	●	●
R-11 Insulation in Floor	●	●	●
R-7 Insulation in Sidewalls	●	●	●
R-11 Insulation in Roof	●	●	●
In Frame Fresh, Grey, and Black Water Tanks	●	●	●
7.5" - 10.5" Steel Z-Beam with Full-Length Welded Outrigger	●	●	●
¼" ABS Enclosed Underbelly	●	●	●
EXTERIOR CAMPING PACKAGE			
6 Gallon Gas/Electric DSI Water Heater with Quick Recovery	●	●	●
Radius Entry Door with Gas Strut	●	●	●
Outside Speakers	●	●	●
4 Stabilizer Jacks	●	●	●
TV Antenna and Cable/Satellite Hook-Up	●	●	●
Radial Tires	●	●	●
Electric Awning	●	●	●
LED Awning Light	●	●	●
Wide Stance E-Z Lube Dexter Axles	●	●	●
Outside Shower (Hot and Cold Water)	●	●	●
Black Tank Flush	●	●	●
EXTERIOR FEATURES			
Dual Propane Tanks with Cover	●	●	●
In Frame Dual Battery Rack	●	●	●
Spare Tire	●	●	●
Extended 4" Down Spouts	●	●	●
Front Diamond Plate	●	●	●
Oversized Grab Handle (main door)	●	●	●
Power Tongue Jack	●	●	●
Magnetic Storage Door Catches	●	●	●
Aluminum Wheels	●	●	●
Oversized Exterior Pass Thru Storage with Lighting	●	●	●
LP Quick Connect	●	●	●
Fiberglass Front Cap	●	●	●

	CROSSFIRE	BULLET	PREMIER
EXTERIOR FEATURES (CONTINUED)			
Solar Prep	●	●	●
15" Tires	●	●	●
INTERIOR CAMPING PACKAGE			
13.5 BTU A/C	●	●	●
Night Shades	●	●	●
Bluetooth Stereo with AM/FM/CD/DVD/AUX Hookups	●	●	●
Microwave	●	●	●
Hardwood Cabinet Doors	●	●	●
Foot Flush Toilet	●	●	●
Tub Surround with Shelves	●	●	●
Full Extension Drawer Glides	●	●	●
6 cu./ft. Double Door Refrigerator	●	●	●
2 Burner Cooktop	●	●	●
Flush Mount 3 Burner Range with Glass Cover	●	●	●
32" LED TV (19FBPR, 22RBPR, 29RKPR, 24RKPR, 31BKPR)	●	●	●
INTERIOR FEATURES			
Residential Style Furniture	●	●	●
Water Heater-By-Pass for Winterization	●	●	●
Interior LED Lights	●	●	●
17" Oven	●	●	●
Porcelain Toilet	●	●	●
Standard Tri-Fold Sofa (N/A 19FBPR, 22RBPR, 202BHSWE, 210RUDWE, 212RBSWE, 220RBIWE, 243BHSWE, 247BHSWE, 257RSSWE)	●	●	●
Stainless Steel Single Basin Sink with High-Rise Faucet	●	●	●
BATHROOM			
Towel Hooks	●	●	●
Power Vent Fan	●	●	●
Solid Wood Medicine Cabinet	●	●	●
Linen Storage	●	●	●

	CROSSFIRE	BULLET	PREMIER
MASTER BEDROOM			
Upgraded Foam Mattress	●	●	●
Dual 110V Outlets	●	●	●
Mirrored Wardrobes	●	●	●
Under Bed Storage	●	●	●
Individual LED Reading Lights	●	●	●
Hardwood Entry Doors	●	●	●
Laundry Chute	●	●	●
SAFETY EQUIPMENT			
Carbon Monoxide Detector	●	●	●
Smoke Alarm	●	●	●
Fire Extinguisher	●	●	●
Electric Brakes	●	●	●
Safety Chains	●	●	●
Tinted Safety Glass Windows, Egress Windows (Fire Escape)	●	●	●
GFI Recepticals	●	●	●
OPTIONS			
RVQ Grill	●	●	●
15K A/C	●	●	●
50 AMP Service w/second A/C (N/A 19FB, 22RB)	●	●	●
THERMAL PACKAGE			
Fully Enclosed Underbelly	●	●	●
2" Duct off of Furnace Directly to Underbelly	●	●	●
30K BTU Furnace and Residential Heat Ducts	●	●	●
PREMIER PACKAGE			
Full Painted Fiberglass Front Cap	●	●	●
6' 11" Vaulted Ceiling	●	●	●
Frameless Tinted Windows	●	●	●
Stainless Steel Single Basin Sink with Hi-Rise Kitchen Faucet and Pullout Sprayer	●	●	●
Solid Surface Countertops	●	●	●
Kitchen Backsplash	●	●	●
LED Flush Mounted Puck Lighting	●	●	●
Outside Kitchens with Galvanized Countertops	●	●	●
Triple 9" Aluminum Entry Steps	●	●	●
42" LED TV (26RBPR, 30RIPR, 34BHPR, 34RIPR)	●	●	●
8 cu. ft. Refrigerator	●	●	●
Stor More Dinette Drawers	●	●	●

DECOR OPTIONS



GUNMETAL DECOR



SADDLEBROOK DECOR

BUY LOCAL PURCHASING YOUR RV LOCALLY

It's up to you where you purchase your new Bullet, but may we suggest your local dealer? Not only does it help your local economy and provide jobs, but it will also give you an opportunity to develop a service relationship with someone that will come to know you and your coach. Congratulations on finding the best built, best equipped, best value in the industry, and happy travels!

Product information is as accurate as possible at the date of publication of this brochure. Features, floor plans, and specifications are subject to change without notice. Please also consult Keystone's web site at keystonerv.com for more current product information and specifications. **Tow Vehicle Disclaimer.** CAUTION: Owners of Keystone recreational vehicles are solely responsible for the selection and proper use of tow vehicles. All customers should consult with a motor vehicle manufacturer or their dealer concerning the purchase and use of suitable tow vehicles for Keystone products. Keystone disclaims any liability or damages suffered as a result of the selection, operation, use or misuse of a tow vehicle. **KEYSTONE'S LIMITED WARRANTY DOES NOT COVER DAMAGE TO THE RECREATIONAL VEHICLE OR THE TOW VEHICLE AS A RESULT OF THE SELECTION, OPERATION, USE OR MISUSE OF THE TOW VEHICLE.** *Length is defined as the distance from the centerline to the hitch pin/coupler to rear bumper of the trailer.

WWW.KEYSTONERV.COM/BULLET



CONNECT WITH KEYSTONE RV AND STAY UP TO DATE WITH PRODUCT NEWS AND INFORMATION



Go RVing
Life's A Trip™

2642 Hackberry Drive
PO Box 2000
Goshen, IN 46527-2000
(574) 535-2100



Keystone RV Company

www.keystonerv.com



YOUR LOCAL DEALER:

DECEMBER 2017
LEARN MORE

