

TOY HAULERS
keystonerv.com/fuzion

FUZION



**Keystone RV
Company**

The ultimate
ownership experience.

The ultimate ownership experience.

The goal of Keystone RV Company is to surprise and delight our owners at each and every touchpoint. We're happy when our campers are happy, and we are committed to providing the very best ownership experience in the industry.



**Keystone RV
Company**

1 EASIER SHOPPING.

At Keystone, we make choosing an RV as easy as finding the Big Dipper on a dark summer night. With comprehensive online product information, Key Connect™ product advisors, and an unparalleled dealer network, we will help you select the perfect RV for your family's adventure.

2 INNOVATIVE THINKING.

The road's a nicer place when you have the industry's smartest features behind you. Keystone leads the pack in patented innovations that make our RVs safer, more comfortable, and easier to operate.

3 LONG HAUL QUALITY.

To keep you on the road, there are certain things we just won't build a Keystone RV without. Game-changing features like our Unified Wiring Standard, Tru-Fit™ five-point slide construction, and no-fail Tuf-Lok™ A/C duct joiners combined with exhaustive testing and inspections are some of the reasons why Keystone is able to offer our owners the industry's best 3-year limited structural warranty.

4 WORRY-FREE CUSTOMER SERVICE.

Wherever the road takes you, you're never too far from an authorized Keystone service center. We also offer live service assistance, ultra-fast parts shipping, online maintenance tips and tricks, and a single-point warranty claims policy. *That's* peace of mind.

5 KEYSTONE NATION.

When you choose Keystone, you become a part of one of the largest camping families in the country. We're Keystone Nation. A friendly community where people share photos, travel tips and amazing stories – all in the spirit of camaraderie and adventure. Come join us.

Experience the Fuzion lifestyle by visiting [#keystonefuzion](#)



FUZION

LIVE FOR IT



FUZION | TOY HAULERS

Experience your adventure in a Fuzion toy hauler.

Keystone's Fuzion toy haulers are designed for customers with a grab-the-bull-by-the-horns attitude. We don't roll with the norm—we set the curve. Fuzion's obsessive out-of-the-box thinking has delivered groundbreaking floorplans and features specifically designed for the thrill-seekers. With innovations like frame-welded tie-downs, OmniChill™ and Super Storage, Fuzion delivers unprecedented performance and maximum value to those who live for adventure.



Keystone EXCLUSIVE Innovations

Year after year, Keystone RV's experienced team delivers Built For the Long Haul quality you expect and exclusive innovations you won't find anywhere else.



**3-year Limited Structural Warranty,
1-year Limited Base Warranty**

Every new Keystone RV comes with the industry's best three-year limited structural warranty AND a one-year limited base warranty. Ask your dealer, visit keystonerv.com, or call Keystone owner relations for details.



4G LTE and Wi-Fi Prep

All units are equipped with a new antenna that integrates 4G LTE and Wi-Fi with standard VHF/UHF/AM/FM reception.



KeyTV™

No more connection guesswork or poor reception. KeyTV offers a game-changing, single point of control of over-the-air, cable, and satellite feeds. Visit us online for more information.



Color-Coded Wiring

Easy-to-trace circuits simplify electrical and entertainment system troubleshooting.



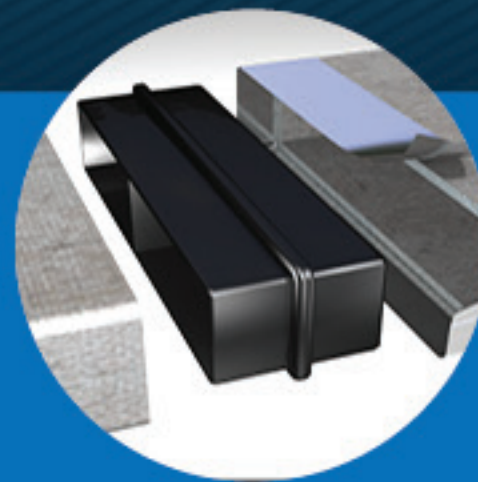
Automotive-Grade Painted Fiberglass Cap

Six layers of stunning and resilient automotive-grade paint with Key-Shield™ paint technology.



In-Floor Heating Ducts

Ducting allows for more airflow that distributes heat evenly for optimal comfort.



Tuf-Lok™ A/C Duct Joiners

Crush resistant design securely joins A/C ductwork, drastically reducing chilled-air leaks and boosting cooling efficiency and comfort.



Tru-fit™ Slide Construction

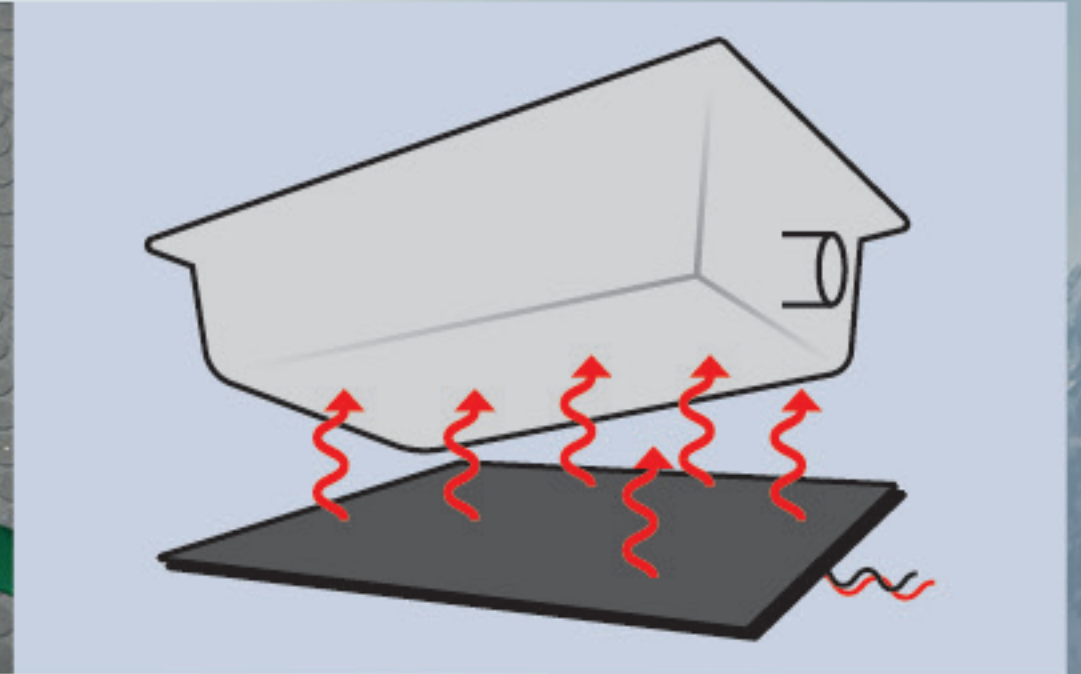
A more durable slide room design that minimizes functional motor and structural stress, resists leaking.

Power Performance

We build each Fuzion with the goal of creating an unmatched adventure machine both inside and out.



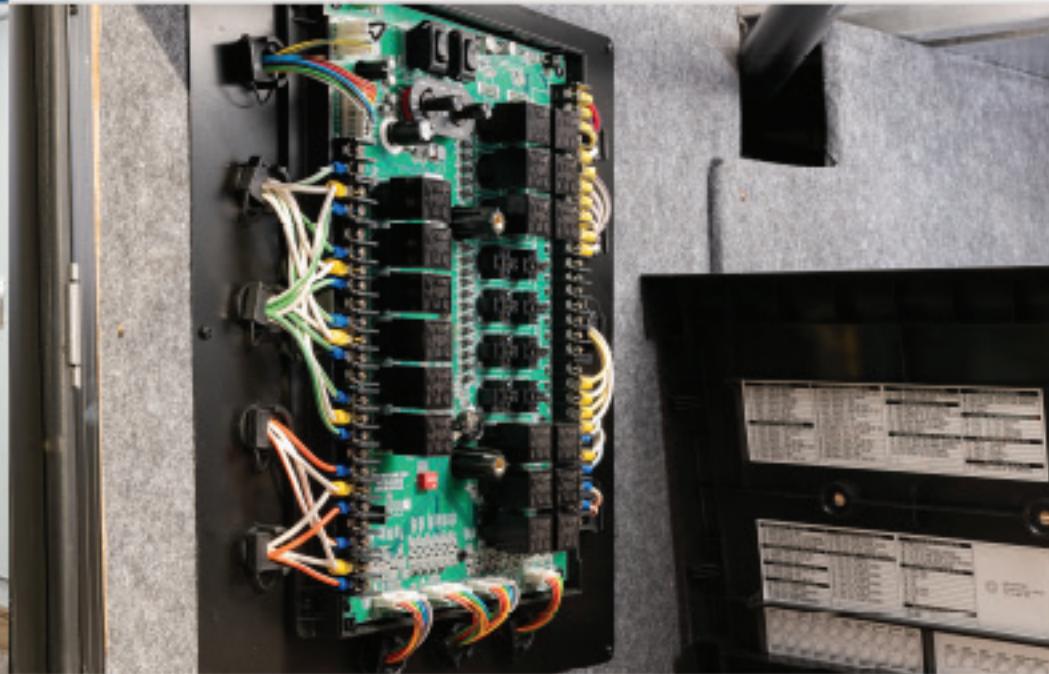
Exclusive Adjust-A-Track™ Frame-welded Tie Down System
Fuzion has 38 points of contact welded into its frame, each supporting up to 5,000 lbs.



Thermal Heat Pad Under Tanks
Additional layer of insulation prevents tanks from freezing.



Premium Vinyl Flooring in Bedroom
More durable and easier to maintain.



Body Control Module
Manual overrides for slides, jacks, and awnings. Color-coded wiring.



Goodyear® Endurance Tires
Made in America, superior durability and performance



Super Storage in Garage
Helps keep garage tidy & organized.



Front StorMor box
Easily store patio steps and more to provide maximum garage space while traveling



CNC Routed Sidewalls
Ensures perfectly cut / perfectly fit windows, doors, and slide-boxes. A better seal around windows and doors.



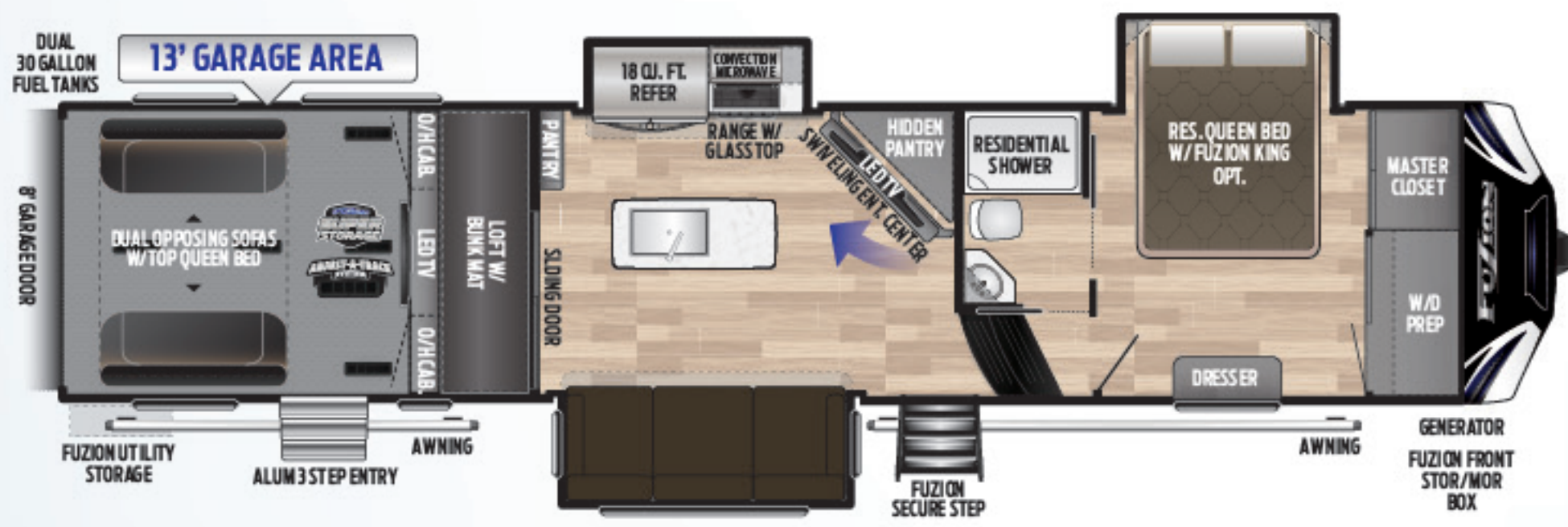
Exterior Utility Storage
Exterior storage for maintenance items, chemicals, liquids etc. Includes a workstation with 110V outlets and USB power ports.



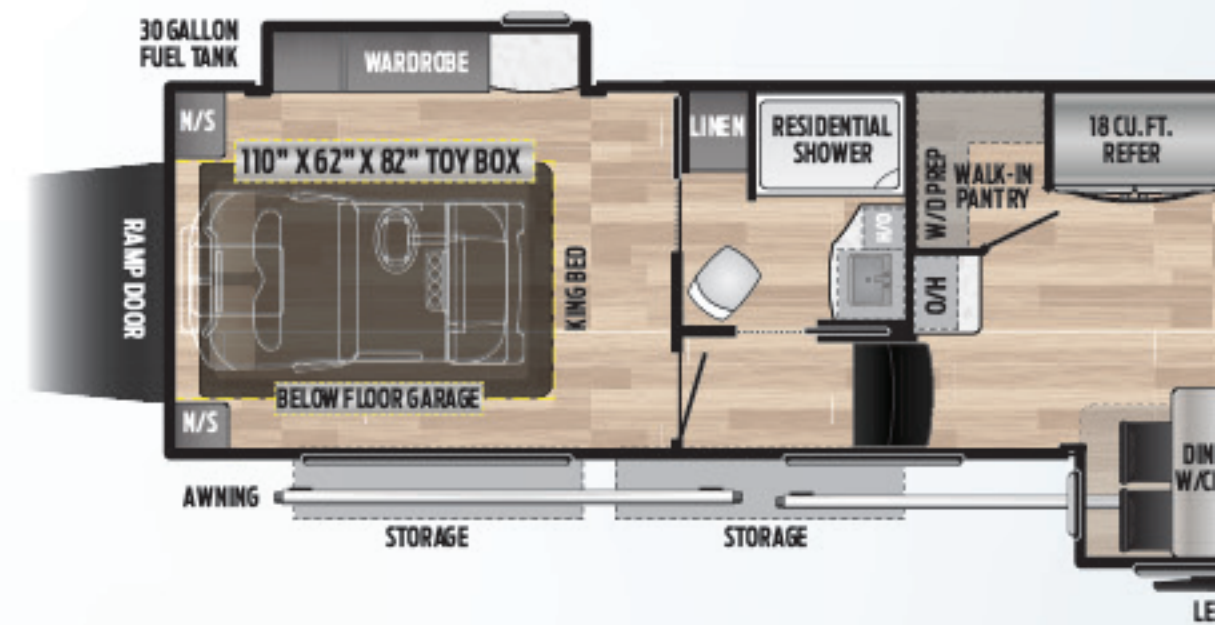
Optional Camp-Side Cinema
High-definition projector with drop-down screen built into the RV's awning.



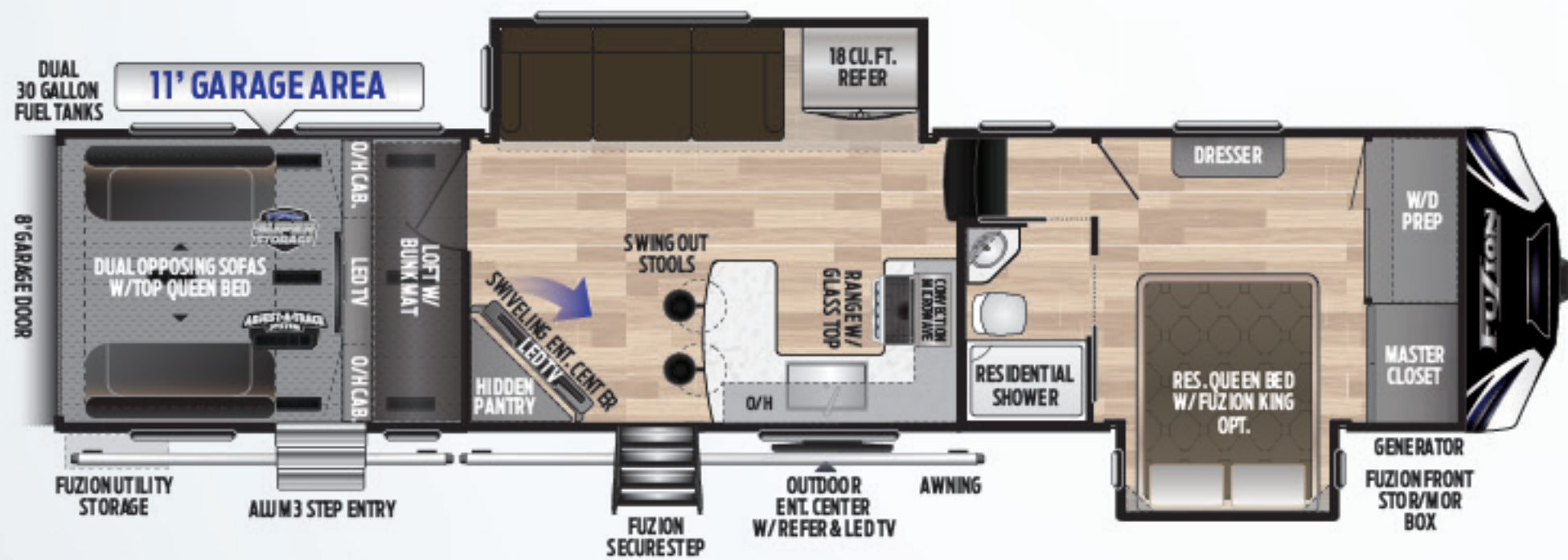
Exterior Convenience Center
Complete with easy-to-read operation instructions for hook-ups, dry camping, black tank flush, winterizing, and more.



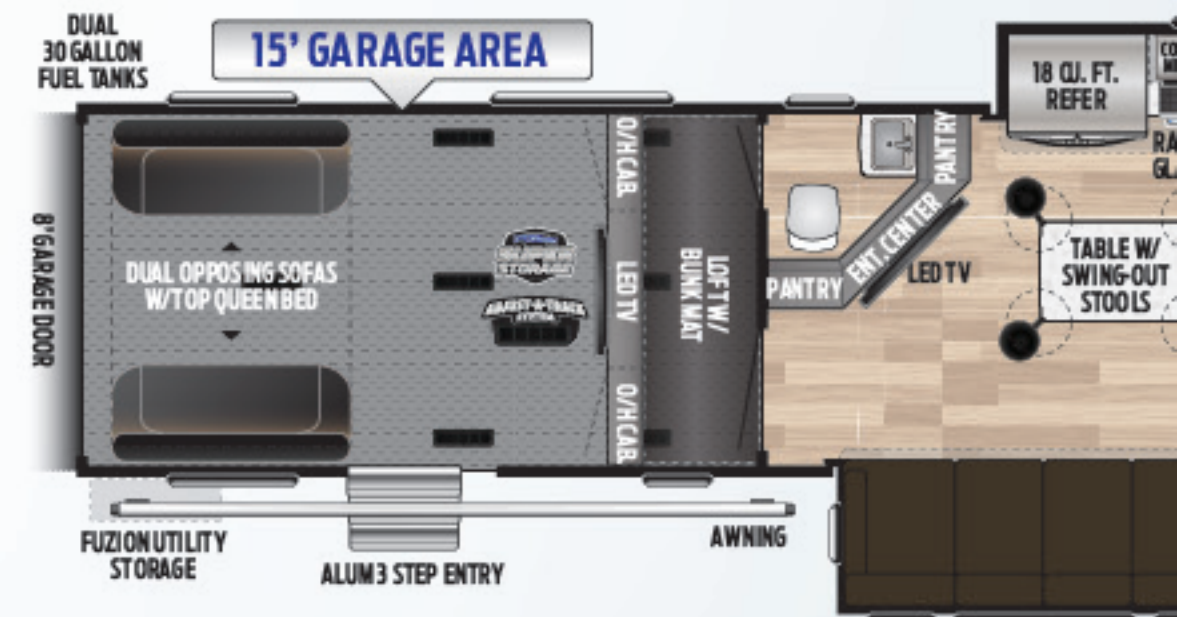
357 | ISLAND KITCHEN, HIDDEN PANTRY, 13' GARAGE, TANDEM-AXLE
Weight: 13810 LBS. | Length: 39' 0"



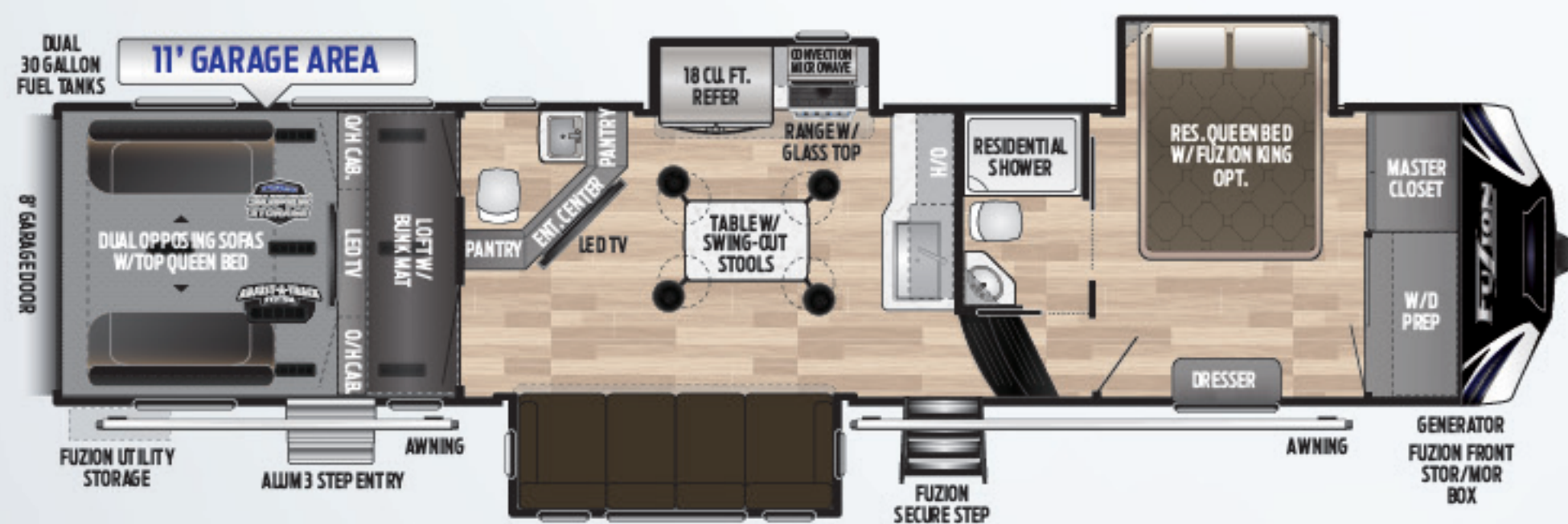
410 | NEW FRONT LIVING, 110" X 62" X 82" TOY BOX
Weight: 14751 LBS. | Length: 39' 0"



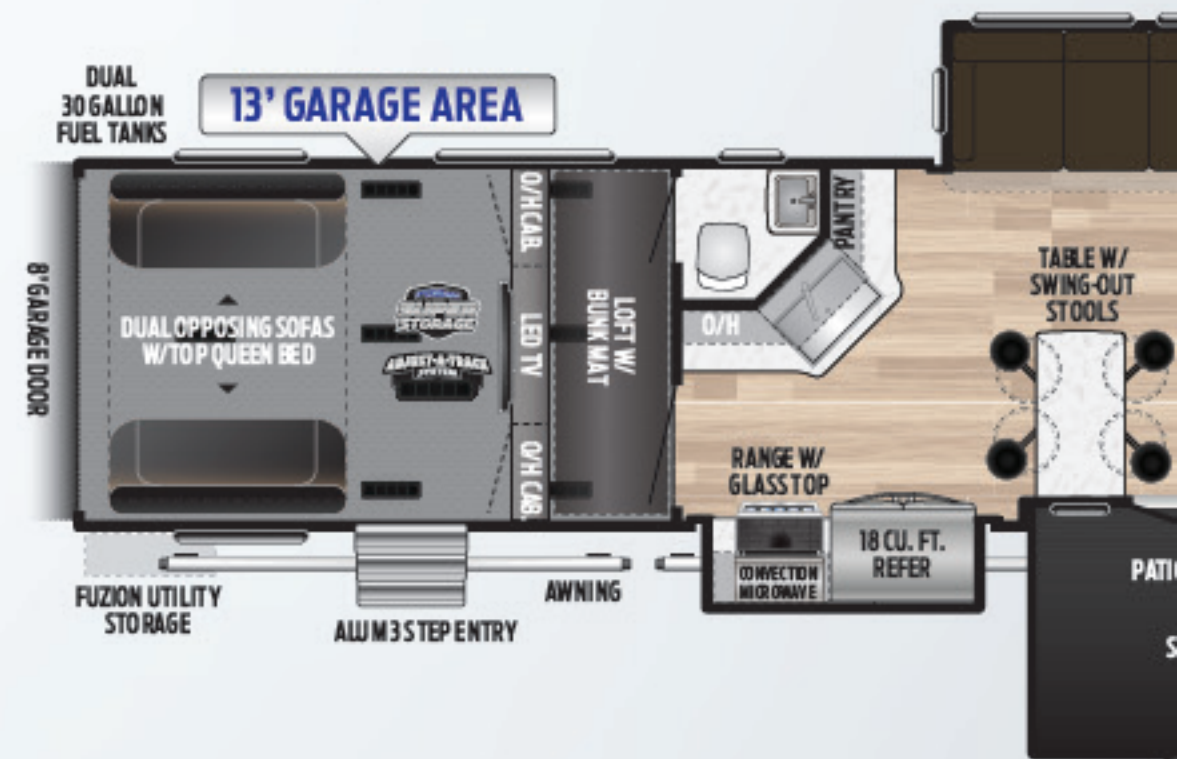
369 | BAR TOP SEATING, HIDDEN PANTRY, 11' GARAGE, TANDEM-AXLE
Weight: 13680 LBS. | Length: 39' 0"



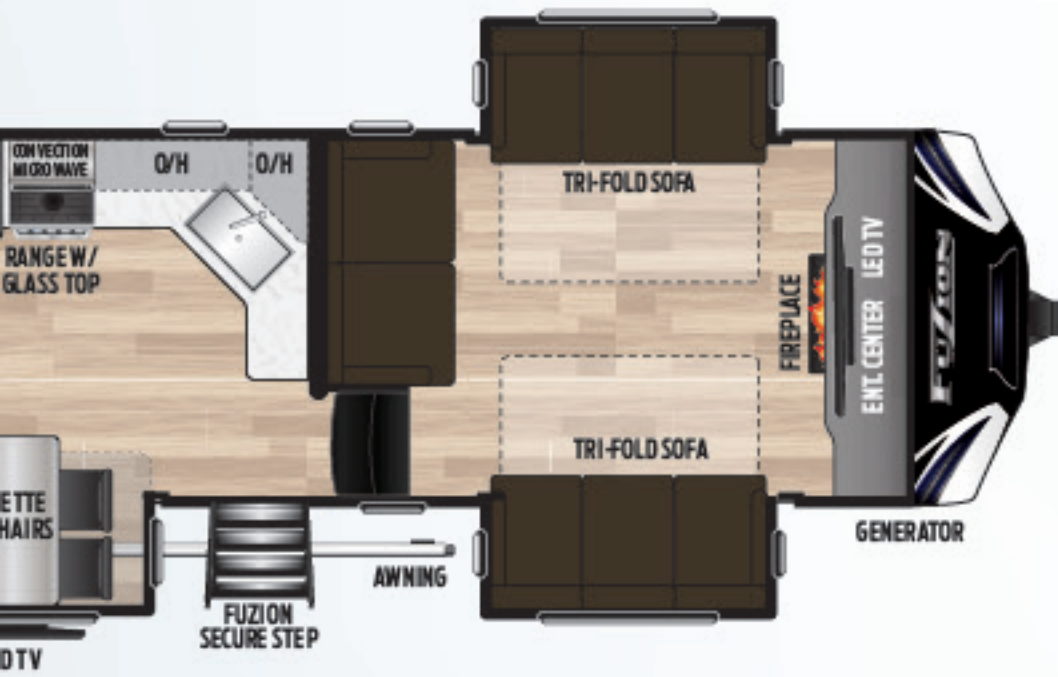
419 | ISLAND KITCHEN, SWING OUT STOOLS, BAR
Weight: 15330 LBS. | Length: 44' 0"



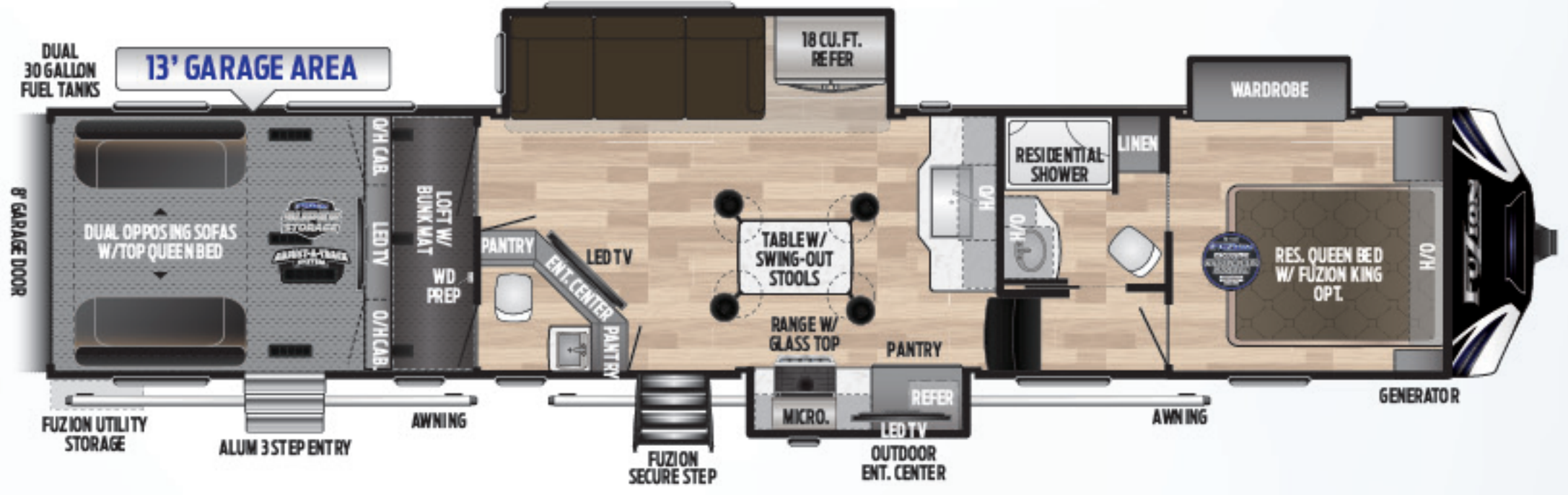
373 | ISLAND KITCHEN, SWING OUT STOOLS, 1 1/2 BATH, 11' GARAGE, TANDEM-AXLE
Weight: 14200 LBS. | Length: 39' 0"



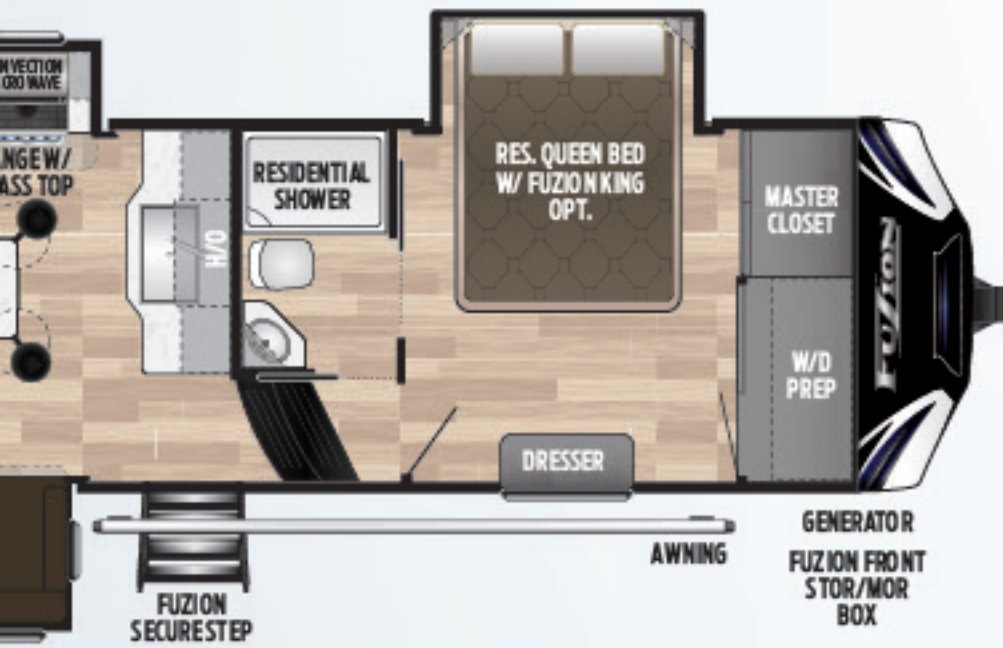
424 | SIDE PATIO, 1 1/2 BATH, 13' GARAGE, TANDEM-AXLE
Weight: 15865 LBS. | Length: 44' 0"



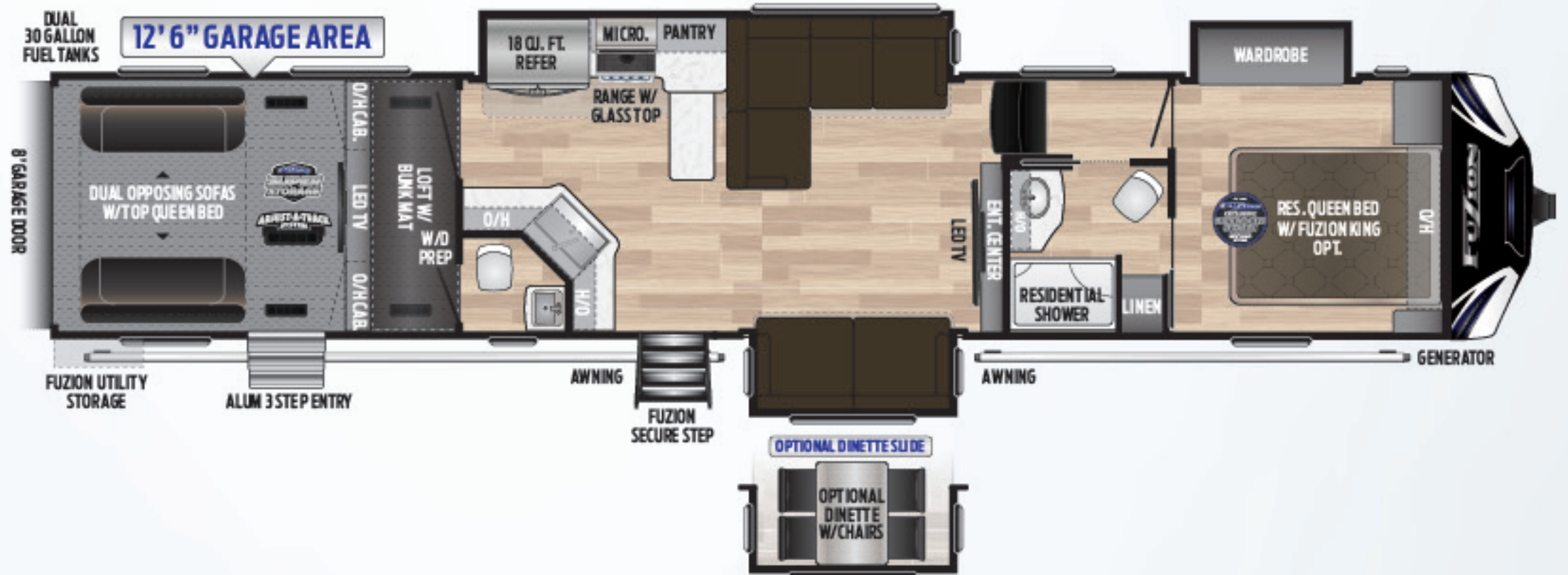
63" TOY BOX, TRIPLE-AXLE
Length: 43' 7"



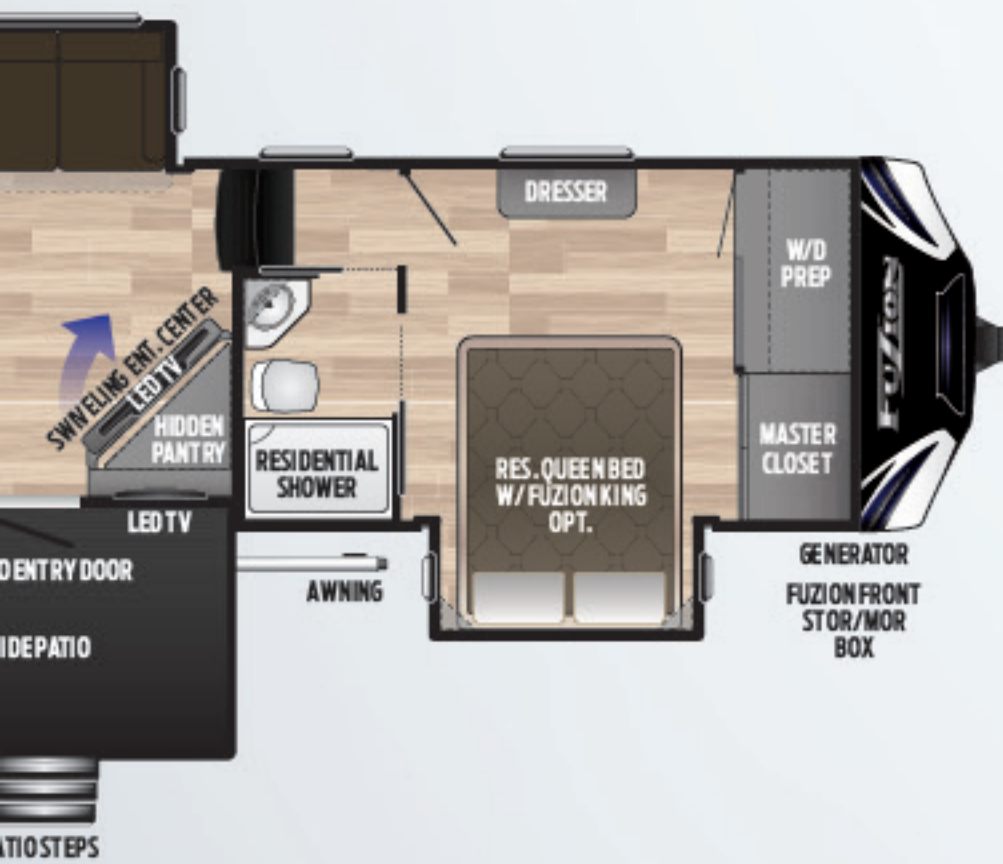
427 | ISLAND KITCHEN, SWING OUT STOOLS, BATH & A HALF, 13' GARAGE, TRIPLE-AXLE
Weight: 15570 LBS. | Length: 44' 0"



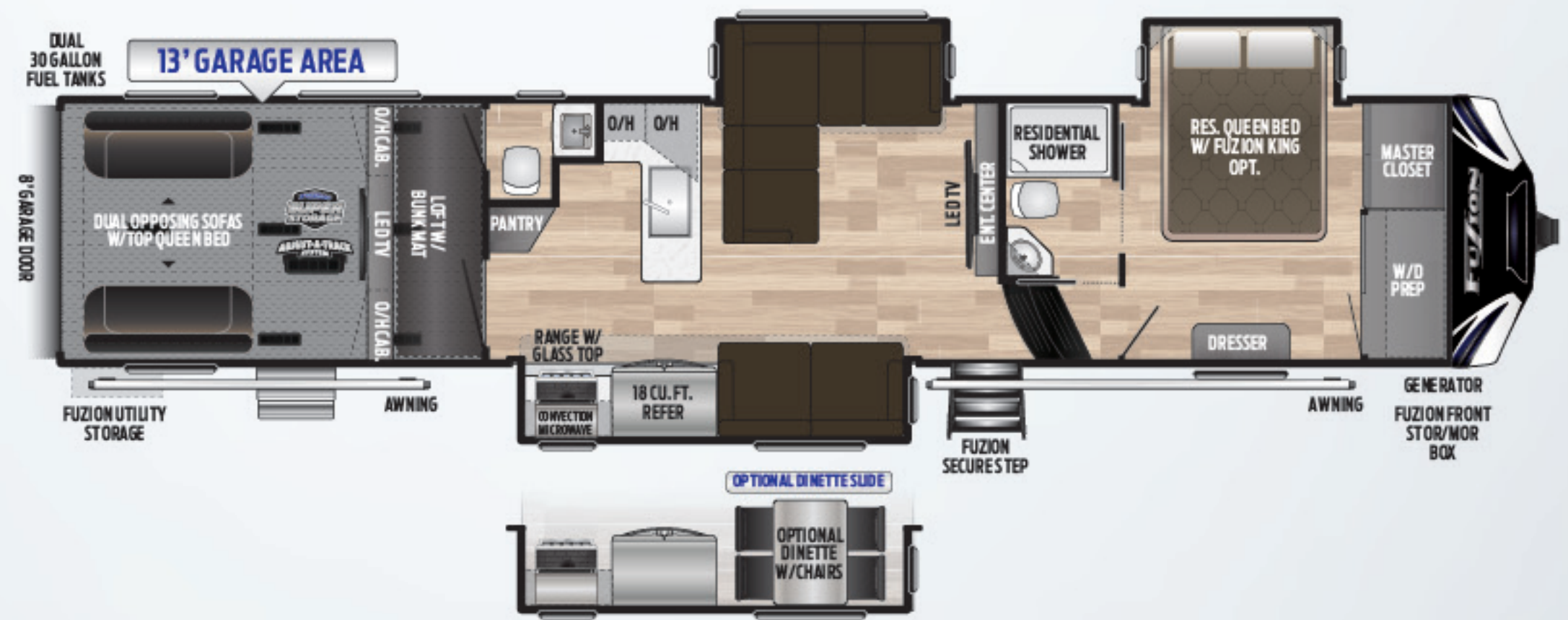
BATH AND A HALF, 15' GARAGE, TRIPLE-AXLE



429 | L-SHAPED SOFA, 1 1/2 BATH, 12' 6" GARAGE, TRIPLE-AXLE
Weight: 15480 LBS. | Length: 44' 0"



13' GARAGE, TRIPLE-AXLE
Length: 44' 0"



NEW! 430 | L-SHAPED SOFA, 1 1/2 BATH, 13' GARAGE, TRIPLE-AXLE
Weight: 15125 | Length: 43' 3"



more product detail at
www.keystonerv.com/fuzion



Pushing the Limits

Fuzion's is bringing an exciting new attitude to toy hauler interior design. Bright, fresh and polished, we have captured the best of contemporary trends and are introducing them in this year's lineup. Sophisticated gray painted cabinets, subway tile backsplash, light solid surface countertops, and swivel-out barstools combine to give Fuzion a look like nothing else on the market.



—
Most Fuzion floorplans now feature an East/West bed slide, giving owners a more spacious master suite with generous storage and washer/dryer prep.



—
Spacious, multi-use garage with upgraded sidewall protection that provides stylish durability.



Operate three A/C units simultaneously for the most cooling power in the industry.

Keystone's Fuzion engineering team partnered with Dometic to build a game changing air conditioning system for our owners who like to play in hotter climates. With Omni Chill™, Fuzion owners can operate all three of their toy hauler's air conditioners simultaneously on a 50 AMP circuit. Other manufacturers' systems require owners to cycle their air conditioners, running only two units at a time. Testing has shown that OmniChill's revolutionary technology keeps coaches up to 8°F cooler than our competitors in 100°F ambient temperature.

Keystone Exclusive



OMNI SHIELD

Weather Protection Package

- » Omni Chill ¾ Ton high efficiency air conditioner system
 - » Highest insulation values in its class
- » Ducted heat into underbelly and storage compartment
 - » Ducted heat into garage
 - » Vented attic
- » Heat pads on holding tanks



Make a Difference with Full-Body Paint

Kick your Fuzion up a notch with long-lasting, automotive grade full-body paint available in blue, red, gold and orange.



(4) color options

Introducing Keystone SolarFlex™

Eighteen months in the making, Keystone is proud to introduce a next generation solar power system that is smaller, operates at a higher voltage, and lasts longer than traditional offerings. By adding the optional SolarFlex system, campers expand their campsite options, can spend more time off the grid, and reduce their overall carbon emissions. Unlike noisy generators, solar operates soundlessly and is a safe way to provide power to the refrigerator while in transit. Lastly, Keystone's roof-mounted SolarFlex panels were designed to be durable and resistant to severe weather, including high wind, driving rain, heavy snow and hail.

Get off the grid with the industry's best solar power system



MODEL	WEIGHT	CARRYING CAPACITY	HITCH WEIGHT	FRESH WATER	WASTE WATER	GRAY WATER	LPG	LENGTH*	HEIGHT
357	13810	3190	3165	106	44	88	60	39' 0"	13' 1"
369	13680	3270	2955	106	44	88	60	39' 0"	13' 1"
373	14200	2800	3155	106	88	88	60	39' 0"	13' 1"
410	14751	4249	3650	106	44	88	60	43' 7"	13' 3"
419	15330	3670	3330	106	88	88	60	44' 0"	13' 3"
424	15865	3135	3545	106	88	88	60	44' 0"	13' 3"
427	15570	3430	3380	106	88	88	60	44' 0"	13' 3"
429	15480	3520	3455	106	88	88	60	44' 0"	13' 3"
430	15125	3875	3280	106	88	88	60	43' 3"	13' 3"

DISCLAIMER: Product information is as accurate as possible as of the date of publication of this brochure. All features, floor plans, and specifications in this brochure are subject to change without notice. Please also consult Keystone's web site at www.keystonerv.com for more current product information and specifications. **Tow Vehicle Disclaimer.** CAUTION: Owners of Keystone recreational vehicles are solely responsible for the selection and proper use of tow vehicles. All customers should consult with a motor vehicle manufacturer or their dealer concerning the purchase and use of suitable tow vehicles for Keystone products. Keystone disclaims any liability or damages suffered as a result of the selection, operation, use or misuse of a tow vehicle. **KEYSTONE'S LIMITED WARRANTY DOES NOT COVER DAMAGE TO THE RECREATIONAL VEHICLE OR THE TOW VEHICLE AS A RESULT OF THE SELECTION, OPERATION, USE OR MISUSE OF THE TOW VEHICLE.** *Length is defined as the distance from the centerline of hitch pin/coupler to rear bumper of trailer. Please review owner's manual prior to purchase for more information on service warranties, extended use, towing and maintenance. Owner's manuals can be found at keystonerv.com.

INTERIOR
Premium Jensen® bluetooth compatible stereo with CD/DVD player, flat panel Jensen® LED HDTV, sound bar, 2 all weather Sony exterior speakers, a,b, and c zone indoor/outdoor speaker switch, 3 way speakers
OmniChill™ A/C w/ thermo-plastic duct couplings
Insulated A/C ductwork
30" convection microwave
21" 3-burner Furrion® oven with glass top
18 cu. ft. refrigerator
Professional bottle opener
Bamboo sink covers
Residential cabinet hardware
Roller shades (living room, bedroom)
Night shades in garage
Solid wood drawer frames
80 lb. rated full-extension ball bearing drawer guides
Recessed LED puck lighting throughout
Residential-style furniture w/ heated seats, LED lights, massage and 110V/USB ports
Stainless steel appliances
Fuzion sky-dome
30" wide radius entry door with screen
KeyTV™ Satellite prep (bedroom, living room, garage, outdoor TV)
Digital TV antenna
60" X 80" residential size queen bed
Under bed storage
Full-size, one piece fiberglass shower w/seat
Fireplace w/surround
Adjustable, hand-held massaging shower fixture
Skylight over shower
Porcelain toilet with foot flush
Fantastic fan in commode room & kitchen
Mirrored medicine cabinet
Loft bunk ladder
40" X 80" Loft mattress
LPG detector

Carbon monoxide detector
Fire extinguisher
GFI duplex receptacles
EXTERIOR
Painted front cap w/ key-shield technology
Aerodynamic fiberglass front cap with lights and improved turning radius
Generator prep with start / stop switch, hour meter and fuel gauge
Fuel station with 12V pump, dual 30-gallon fuel tanks, and static line
6-point hydraulic level-up system
MORryde® CRE 3000 suspension
Attic vents
Step light
LED security lights
LED cargo ramp loading lights
Compartment lights
LED tail/brake lights
Frameless tinted safety glass windows
Spare tire and carrier
Collapsible roof ladder
Dual, folding assist handles with padding on entry doors
Dual power awning w/LED lighting
LP quick connect
GARAGE
Double electric beds with dual opposing sofas
Residential glass pass-through door
Washer/dryer prep
Upgraded sidewall protection
Metal ram air vents (2)
8' ramp door
Gas/oil resistant tuff-ply flooring
Ducted A/C, ducted heat
Independent direct dump A/C in Garage
EXCLUSIVE KeyTV™ cable TV/satellite prep

Night shades
Adjust-A-Track™ frame-welded tie-downs
EQUIPMENT
Gen 3 iNCommand control system w/ Global Connect
7,000 Lb. Dexter E-Z Lube® axles
Flipped axles
Electric 12" x 2" brakes on every wheel
16" Aluminum wheels
Goodyear® made in America tires
5500 Watt Onan generator w/ 30-gallon fuel tank
12-gallon gas / electric water heater with direct spark ignition
Low-rise aluminum entrance step in garage (n/a 410)
50 Amp service with detachable marine power cord
90 Amp converter
12V disconnect
Water heater bypass
Power tank flush on all black tanks
Outside shower
35,000 BTU furnace
Heated, insulated, enclosed holding tanks
Electric heat pads on tanks
MORryde® Secure Step on main entry door
Fast track 2.0 patio system with electric awning & patio step
SAFETY
Fire extinguisher
Smoke detector
LPG detector
CO detector
Safety chains
Emergency breakaway switch
OPTIONS
Sliding rear patio door
Dual-pane frameless windows
King bed suite
Full-body paint
SolarFlex™ solar package
Camp-side cinema package

BUILT FOR THE LONG HAUL



PRINT 10.2019

