

2020

ALLEGRO RED

CLASS A



TIFFIN





Clockwise from top: Cockpit; Driver Side living area; Dashboard shown with Navigation System (optional) and Digital Cluster (standard); Kitchen galley window. All interiors shown are 37 BA with Mocha cabinets, Dhurrie Beige décor.

2020 ALLEGRO RED

REFINEMENT REDEFINED

A signature motorhome of the Tiffin lineup, the 2020 Allegro RED® coach delivers impeccable quality, luxury, and value at a price range that is entry level. Its powerful, Rear Engine Diesel (RED) makes it a pleasure to drive with each and every easy press of the accelerator. You'll also enjoy its comfortable and spacious living spaces, featuring 7' ceilings and four slide-out rooms. From front-to-back, the Allegro RED is a powerful, luxurious, and intuitive home you'll enjoy driving and living in for years to come.



Main Living Area

Making your motorhome feel like it's uniquely yours is important. That's why the Allegro RED allows you to personalize living areas for the space and style you need. A modern, neutral décor gives you the freedom to customize and complement your own personal style. Plus, amenities such as energy-efficient LED lighting, soft and durable Ultraleather furniture, and stunning hardwood cabinetry gives you that extra special feeling of home.

Left to right: Dinette; Living Area. All interiors shown are 37 BA with Mocha cabinets, Dhurrie Beige décor.



The cool brightness of LED lighting illuminates interiors, using a fraction of the energy of incandescent bulbs to preserve the coach's battery life.



Top to bottom: Lift TV behind Sofa Bed on passenger side; Half-bath Vanity; Sofa Bed on driver side.



Master Suite

Getting a great night's sleep comes easy in the 2020 Allegro RED. You'll enjoy the comfort of sleeping on a memory foam mattress that comes available in both a standard queen or optional king size. Both side windows open to create a refreshing cross breeze. The stylish, hardwood cabinets are custom built, and seamlessly complement the fabrics and finishes found in the suite. The master bath features a one-piece, molded fiberglass shower – it's the perfect, easy-to-clean material for the RV travel lifestyle.

Left to right: Bedroom Storage; Queen Bed. All interiors shown are 37 BA with Mocha cabinets, Dhurrie Beige décor.





Tiffin-crafted solid hardwood cabinets, drawers, and closets add more storage than many larger-sized models.



Top to bottom: Master Bathroom; Bathroom storage cabinet.

Kitchen

Behold beautiful functionality. Upgraded countertops and backsplashes create an elegant impression. A three-burner cooktop, residential refrigerator, and convection microwave all come standard. Plentiful storage, including a handy pull-out pantry, ensures everything stays neatly organized.

Kitchen with Expand-an-Island. All interiors shown are 37 BA with Mocha cabinets, Dhurrie Beige décor.



Top to bottom: Optional dishwasher; Pull-out pantry.

Premium Paint System

Our eight-step full-body paint system features premium grade paints sealed with three layers of superclear coat with ultraviolet protection. An additional layer of scratch-resistant plastic coating protects the front of the coach, stairwell, and entry door lock.



G3 GOLD CORAL



G3 WATERFALL



G3 NASA



G3 WHITE MAHOGANY



G3 RUSTIC CANYON

Floor Plans



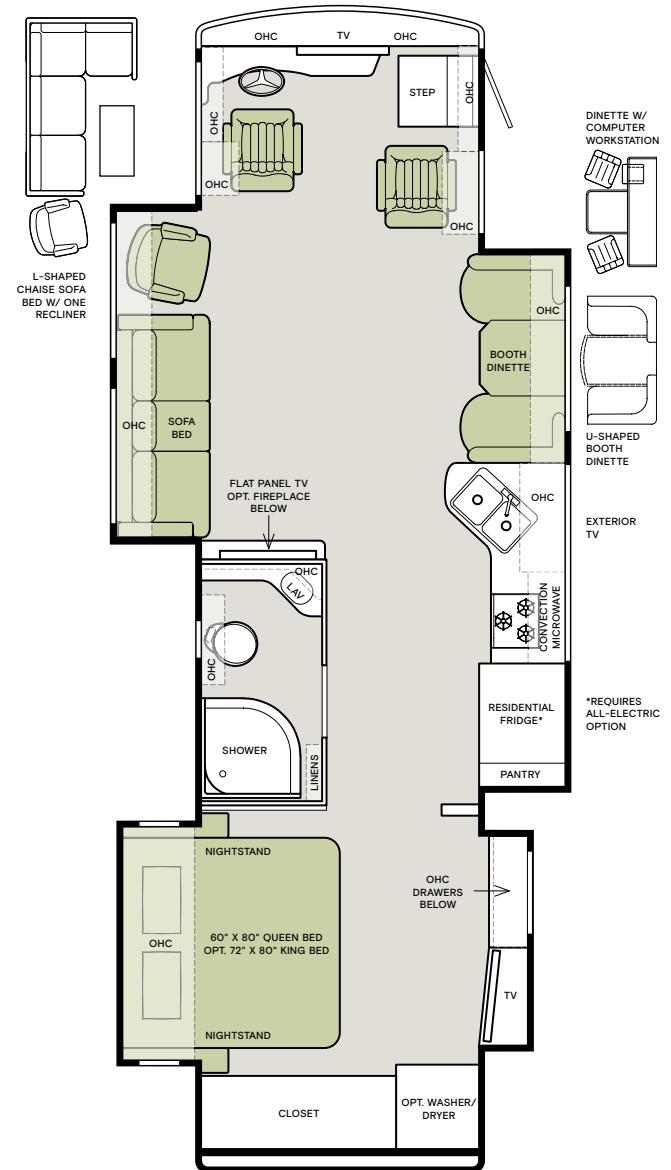
The design of every Allegro RED floor plan must meet four essential criteria: Maximum space, Optimal organization, Relaxation plus, and Elegant atmosphere. Tiffin's **MORE** Plans offer your family the most comfortable layout for life on the road.

If optional furniture combinations are selected, window locations may vary from diagram shown.

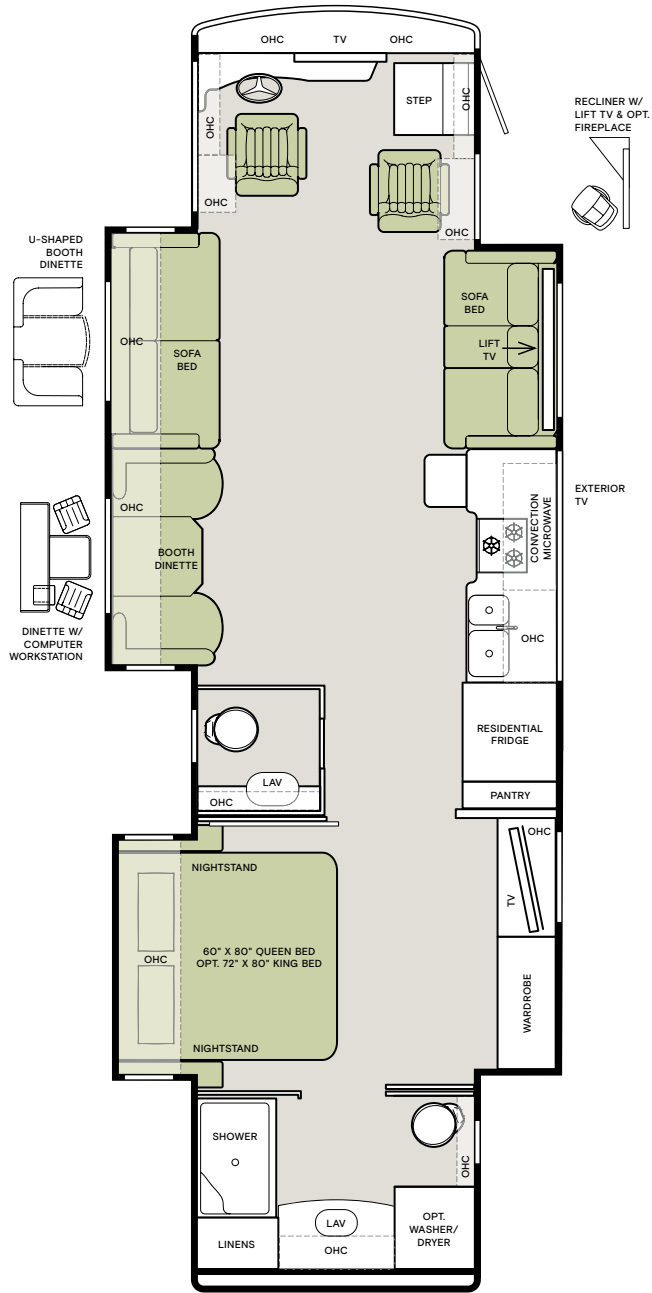
All options may not be available in every model. Because of progressive improvements and specifications, standard and optional equipment are subject to change without notice or obligation.

For a complete and up-to-date list of available options and specifications, visit tiffinmotorhomes.com.

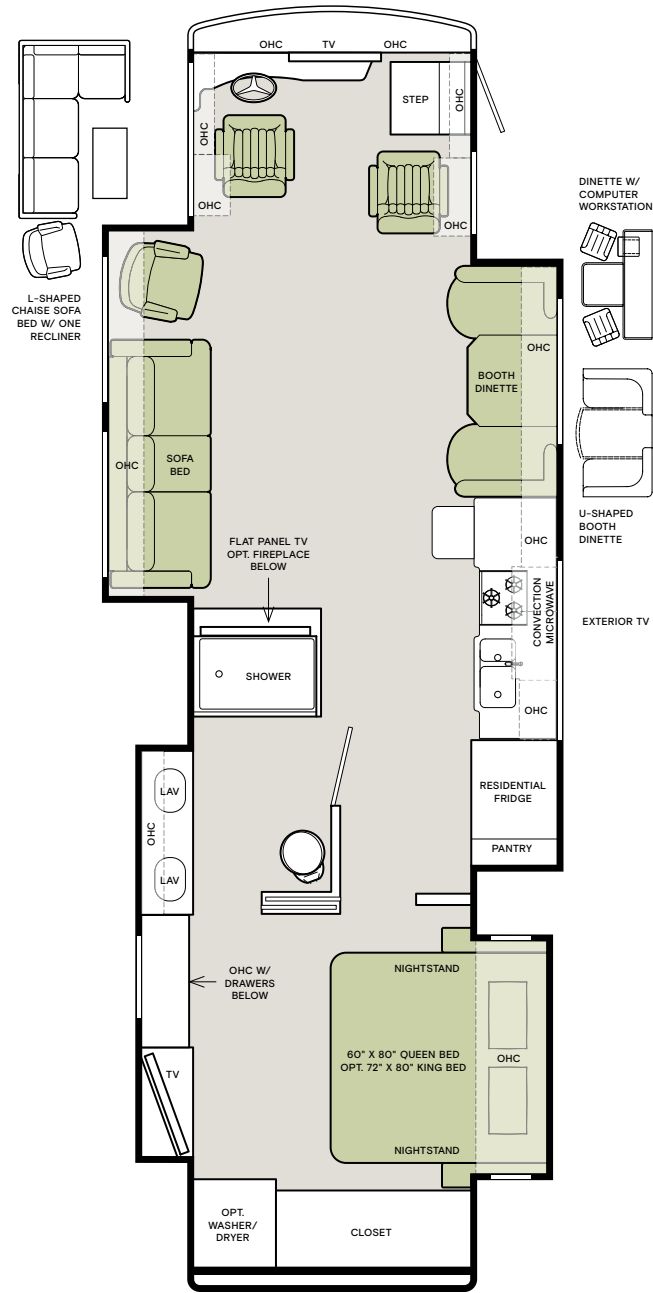
33 AA



37 BA



37 PA



Interior Décor

Make your experience on the road all your own. Express yourself by choosing the interior appointments such as cabinet finishes, flooring, and décor ensembles for every part of your motorhome. In the 2020 Allegro RED, you'll be able to go in style no matter where you go.

CABINETS



AMBER GLAZED

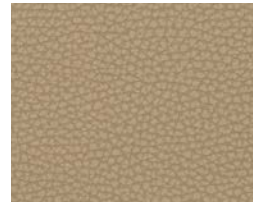


ENGLISH CHESTNUT

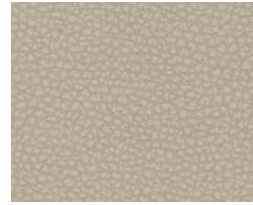


MOCHA

ULTRALEATHER



BELGIAN



COCOON



WHITE MAPLE

DHURRIE BEIGE



WINDOW TREATMENT



BACKSPASH



COUNTERTOP



LIVING ROOM

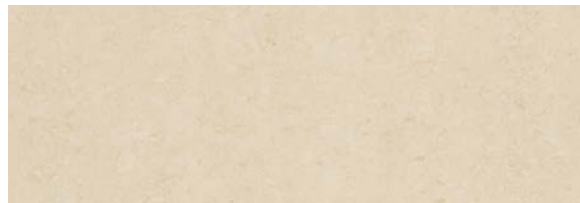


MASTER SUITE

FLOOR TILE



BARCELONA (S)



PIETRE DEL NORDE ALASKA (O)

Because of progressive improvements and specifications, standard and optional equipment are subject to change without notice or obligation. For a complete and up-to-date list of available options and specifications, visit tiffinmotorhomes.com.

SILVER LIGHT



WINDOW TREATMENT



BACKSPLASH



COUNTERTOP



LIVING ROOM



MASTER SUITE

TAOS TAUPE



WINDOW TREATMENT



BACKSPLASH



COUNTERTOP



LIVING ROOM



MASTER SUITE

Specifications

ENGINE	33 AA	37 BA	37 PA
Cummins ISB 6.7-liter Electronic Diesel, Turbocharged, Aftercooled Engine	S	S	S
Freightliner® Rear Engine Diesel Chassis	S	S	S
Allison 3000 MH 6-speed Automatic Transmission w/ Lock-up	S	S	S
Peak HP 360 HP @ 2,600 RPM	S	S	S
Peak Torque (lb - Ft. Max Net) 800 @ 1,800 RPM	S	S	S
GAWR Front (lb)	12,400	12,400	12,400
GAWR Rear (lb)	21,000	21,000	21,000
GVWR (lb)	33,400	33,400	33,400
GCWR (lb)	43,400	43,400	43,400
Wheel Base	198"	234"	252"
Tire Size	275/80 R 22.5	275/80 R 22.5	275/80 R 22.5
Fuel Tank (gal.) – Dual Fuel Fill	100	100	100
DEF Tank (gal.) ¹	13	13	13
Alternator Amps	160	160	160

AUTOMOTIVE

- Raised Rail Chassis Frame
- Full Air Brakes
- Four Aluminum Wheels
- Air Ride Suspension
- Exhaust Brake

WEIGHTS AND MEASURES	33 AA	37 BA	37 PA
Overall Length (approximately) ²	35' 2"	38' 6"	39'
Overall Height w/ Roof Air (max.)	12' 10"	12' 10"	12' 10"
Interior Height	84"	84"	84"
Overall Width ²	101"	101"	101"
Interior Width	96"	96"	96"
Fresh Water (gal.)	90	90	90
Black Water (gal.)	50	50	50
Grey Water (gal.)	70	70	70
LPG Tank (gal.; can only be filled to 80% capacity)	24	24	24
Basement Storage (cubic ft – app.)	83.75	119	119
Minimum Garage Height	14'	14'	14'
Hitch Rating (lb) ³	10,000	10,000	10,000

All options may not be available on every model. Because of progressive improvements and specifications, standard and optional equipment are subject to change without notice or obligation. For a complete and up-to-date list of available options and specifications, visit tiffinmotorhomes.com.

For all information concerning the limited warranty provided by Tiffin, please refer to the full, written limited warranty set forth on the Tiffin website or held by our authorized dealerships.

EXTERIOR

- Fiberglass Front and Rear Caps
- Tinted One-piece Windshield
- 8.0 kw Onan® Generator
- Horizontal Mounted Wipers
- Heated Power Mirrors
- Exterior Patio Light
- Power Patio Awning
- Automatic Entry Door Awning
- Awning(s) over Slide-outs
- Two Low Profile Roof ACs with Heat Pumps (15 K BTUs)
- Double Electric Step
- 1/4" Thick Single Pane Windows
- Convenient Access Doors with Gas Shocks
- Single Handle Lockable Storage Door Latches
- Heated Holding Tank Compartment
- Four 6 V House Batteries
- Digital TV Antenna
- Cable TV Ready
- 50 Amp Service
- Black Holding Tank Flush System
- Exterior Rinse Hose/Shower
- Gravity Water Fill
- Color Back-up Monitor
- Undercoating
- Roof Ladder
- External Tripod Satellite Hook-up
- Exterior Storage Compartment Lights
- Chrome Mirror Heads with Integrated Turn Signal Cameras
- Full-body Paint
- Hydraulic Automatic Leveling Jacks
- 110 V Exterior Receptacle
- Front Cap Protective Film
- Exterior Flat Panel TV
- Air Horns
- Mud Flap with Diffuser

EXTERIOR OPTIONS

EXTERIOR OPTIONS	33 AA	37 BA	37 PA
In-motion Satellite Dish ⁴	O	O	O
Exterior Slide-out Tray	O	O	O
Prep for Solar Panels	O	O	O
One Solar Panel	O	O	O
Three Solar Panels	O	O	O
CB Antenna	O	O	O
Wi-Fi Ranger	O	O	O
Prep for Winegard® TRAV'LER ⁵	O	O	O

KITCHEN

- Double Bowl Kitchen Sink with Single Lever Chrome Faucet
- Solid Surface Galley Countertop
- Solid Surface Backsplashes
- 3-burner Cooktop with Convection Microwave
- Panoramic Galley Window
- Residential Refrigerator⁶

KITCHEN OPTIONS

KITCHEN OPTIONS	33 AA	37 BA	37 PA
Oven w/ Convection Microwave	O	O	O
Dishwasher	O	O	O
Expand-an-island	–	S	S

INTERIOR

- High Gloss Flat Panel Hardwood Cabinet Doors
- Solid Wood Cabinet Fascias
- Soft Touch Vinyl Ceiling
- Flat Panel TV in Entertainment Center
- Ceramic Tile Flooring in Living Room Area and Bath Area
- Treated Carpet and Fabrics
- Ball Bearing Drawer Slides
- Solar and Privacy Shades
- Power Roof Vents
- Tank Level Monitor System
- Smoke Detector
- Truma® Gas Continuous Water Heater
- Power Step Well Cover
- 2000 Watt Sine Wave Inverter
- Carbon Monoxide Detector
- LED Lighting
- Extraordinaire™ AC System
- LPG Leak Detector
- Home Theater Surround Sound System (Includes DVD Player)

INTERIOR OPTIONS		33 AA	37 BA	37 PA
Stacked Washer/Dryer		O	O	O
Central Vacuum Cleaner		O	O	O
All-electric Coach: Includes Aqua-Hot Hydronic Heating System w/ Continuous Hot Water		O	O	O
Cabinets	Amber Glazed Solid Cabinet Doors and Drawer Fronts	O	O	O
	English Chestnut Solid Cabinet Doors and Drawer Fronts*	O	O	O
	Mocha Solid Cabinet Doors and Drawer Fronts*	O	O	O
Fabric Suites*	Dhurrie Beige	O	O	O
	Silver Light	O	O	O
	Taos Taupe	O	O	O
Ultraleathers*	Belgian Ultraleather	O	O	O
	Cocoon Ultraleather	O	O	O
	White Maple Ultraleather	O	O	O
Floor Tiles	Barcelona Tile Floor	S	S	S
	Pietre Del Norde Alaska Tile Floor	O	O	O

BEDROOM

- Wardrobe with Automatic Light
- Bed Comforter with Throw Pillows
- Flat Panel TV
- Memory Foam Queen Mattress (60" x 80")
- Solar/Privacy Shades
- Bedroom Ceiling Fan

BEDROOM OPTIONS	33 AA	37 BA	37 PA
Memory Foam King Bed Mattress (72" x 80")	O	O	O
Carpeted Flooring	S	—	S

COCKPIT

- Tilt and Telescoping Steering Wheel
- Wood Drawers in Dash
- Lighted Instrument Panel
- CD Player and AM/FM Stereo
- 12 V Dash Receptacle
- Power Solar and Privacy Windshield Shades
- House Battery Disconnect Switch
- USB Dash Receptacle
- Fire Extinguisher
- Manual Solar and Privacy Shades on Side Windows
- Ultraleather Power Driver and Passenger Seats
- Satellite-ready Radio (subscription required)
- Adjustable Seatbelt Brackets
- Overhead Flat Panel TV
- Ultraleather Power Passenger Seat with Footrest

COCKPIT OPTIONS	33 AA	37 BA	37 PA
In-dash Navigation System	O	O	O

BATHROOM

- Medicine Cabinet
- Skylight and LED Light in Shower
- Molded One-piece Fiberglass Shower
- Solid Surface Vanity Top
- Roof Vent Fan

LIVING AREA/DINETTE OPTIONS	33 AA	37 BA	37 PA
Ultraleather Booth Dinette on Passenger Side	S	—	S
Ultraleather Booth Dinette/Sleeper on Driver Side	—	S	—
Ultraleather Hide-a-Bed Sofa and One Recliner on Driver Side	S	—	S
Ultraleather DE Sofa/Sleeper and Lift TV on Passenger Side	—	S	—
Ultraleather L-shaped Sofa and One Recliner on Driver Side	O	—	O
Ultraleather Air Coil Sofa on Driver Side	—	S	—
Ultraleather U-shaped Dinette on Passenger Side	O	—	O
Ultraleather U-shaped Dinette (Non-sleeper) on Driver Side	—	O	—
Ultraleather Recliner and Lift TV on Passenger Side	—	O	—
Dinette w/ Computer Workstation on Passenger Side	O	—	O
Dinette w/ Computer Workstation on Driver Side	—	O	—
Fireplace Below Flat Panel TV in Entertainment Center	O	—	O
Fireplace on Passenger Side (only available w/ Ultraleather Recliner w/ Lift TV)	—	O	—

*Optional and no charge.

- 1 Diesel Exhaust Fluid (DEF) is the active component used in Selective Catalytic Reduction (SCR) engines to reduce nitrogen oxide emissions by 90% to meet EPA standards.
- 2 The approximated coach width and length does not include side-view mirrors and rear ladders.
- 3 Maximum Trailer Weight is dependent on the loading and towing variables which include the GVWR, GAWR, and GCWR, as well as adequate trailer brakes. Please refer to the operator's manual of your vehicle chassis for further towing information.
- 4 High-definition programming is not available on a dome satellite antenna unless you subscribe to DISH Network®.
- 5 In-motion Satellite Dish and Prep for Winograd TRAVLER cannot be optioned together on the 33 AA.
- 6 Required with All-electric option for 33 AA.



1

YEAR*
LIMITED WARRANTY

5

YEAR** DELAMINATION
LIMITED WARRANTY

10

YEAR** CONSTRUCTION
LIMITED WARRANTY

1

YEAR COACH
ROADSIDE SERVICE

∞

ONGOING
CUSTOMER SUPPORT

©2020 Tiffin Motorhomes, Inc. Allegro®, Allegro Breeze®, Allegro RED®, Phaeton®, Allegro Bus®, Zephyr®, Wayfarer®, Roughing It Smoothly®, Open Road®, PowerGlide®, and Pusher® are registered trademarks of Tiffin Motorhomes, Inc. All rights reserved.
For all information concerning the limited warranty provided by Tiffin, please refer to the full written limited warranty set forth on the Tiffin website or held by our authorized dealerships. Please note, some interior furnishings not included.
* or 12,000 miles. ** Or 50,000 miles.

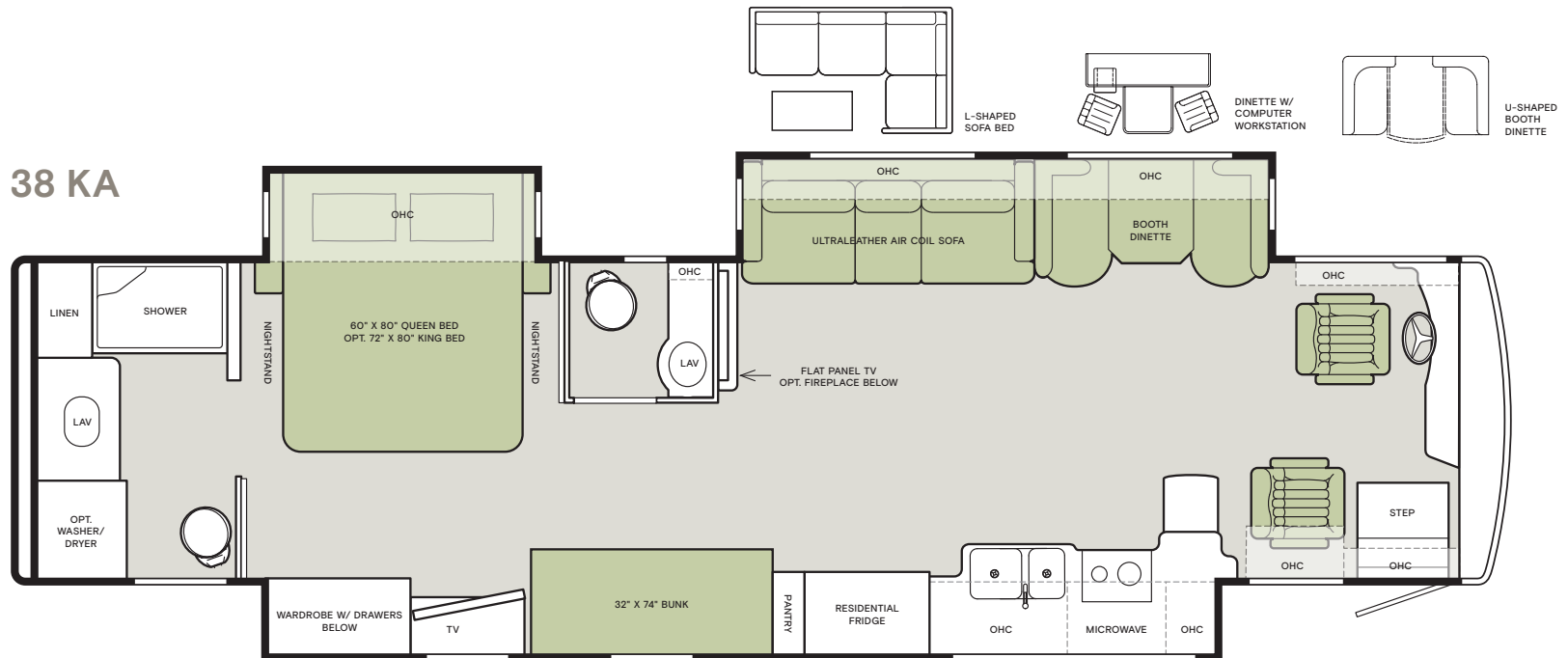
FOR PARTS & SERVICE CALL 256.356.0261 OR VISIT TIFFINMOTORHOMES.COM

105 2ND ST NW RED BAY, AL 35582 [f](#) [t](#) [i](#) [p](#)

ALLEGRO RED

The Allegro RED 38 KA adds a new twist to the Tiffin lineup. Featuring bunk beds, along with a master bath and half bath, the Allegro RED 38 KA fits the bill for those who have family, friends, or pets to bring along for that next adventure. Like all Allegro RED models, the 38 KA features a Cummins rear diesel engine that helps to make every drive a pleasure. From front-to-back, the Allegro RED is a powerful, luxurious, and intuitive home you'll enjoy for years to come.

If optional furniture combinations are selected, window locations may vary from diagram shown. All options may not be available in every model. Because of progressive improvements and specifications, standard and optional equipment are subject to change without notice or obligation. For a complete and up-to-date list of available options and specifications, visit tiffinmotorhomes.com.



FOR PARTS & SERVICE CALL 256.356.0261 OR VISIT TIFFINMOTORHOMES.COM | 105 2ND ST NW RED BAY, AL 35582



Specifications

GENERAL MECHANICAL

- Freightliner® Rear Engine Diesel Chassis
- Cummins ISB 6.7-liter Electronic Diesel, Turbocharged, Aftercooled Engine
- Peak HP 360 HP @ 2,600 RPM
- Peak Torque (lb-Ft. Max Net) 800 @ 1,800 RPM on 360 HP Engine
- Allison 3000 MH 6-speed Automatic Transmission with Lock-up
- GAWR – Front: 12,400 lb
- GAWR – Rear: 21,000 lb
- GVWR: 33,400 lb
- GCWR: 43,400 lb
- Raised Rail Chassis Frame
- Air Ride Suspension
- Tire Size: 275/80R22.5
- Alternator Amps: 160
- Minimum Garage Height: 14'
- Four Aluminum Wheels
- Exhaust Brake
- Full Air Brakes
- Overall Length (approximately¹): 39' 6"
- Overall Height with Roof Air (maximum): 12'10"
- Interior Height: 84"
- Overall Width¹: 101"
- Interior Width: 96"
- Hitch Rating²: 10,000 lb
- Fuel Tank (Gallons) – Dual Fuel Fill: 100
- Fresh Water (gallons): 90
- Black Water (gallons): 50
- Grey Water (gallons): 70
- LPG Tank (gallons; 80% Capacity Limit): 24
- Basement Storage (cubic feet – approximately): 119
- Wheel Base: 252"
- DEF Tank³ (gallons): 13

GENERAL EXTERIOR

- Fiberglass Front and Rear Caps
- Tinted One-piece Windshield
- 8.0 kw Onan® Generator
- Horizontal Mounted Wipers
- Heated Power Mirrors
- Exterior Patio Light
- Power Patio Awning
- Power Entry Door Awning
- Awning(s) over Slide-outs
- Two Low Profile Roof ACs with Heat Pumps (15 K BTUs)
- Double Electric Step
- 1/4" Thick Single Pane Windows
- Convenient Access Doors with Gas Shocks
- Single Handle Lockable Storage Door Latches
- Heated Holding Tank Compartment
- Four 6 V House Batteries
- Digital TV Antenna
- Cable TV Ready
- 50 Amp Service
- Black Holding Tank Flush System
- Exterior Rinse Hose/Shower
- Gravity Water Fill
- Color Back-up Monitor
- 110 V Exterior Receptacle
- Undercoating
- Roof Ladder

- External Tripod Satellite Hook-up
- Exterior Storage Compartment Lights
- Chrome Mirror Heads with Integrated Turn Signal Cameras
- Full-body Paint
- Hydraulic Automatic Leveling Jacks
- Front Cap Protective Film
- Exterior Flat Panel TV
- Air Horns
- Mud Flap with Diffuser

AVAILABLE OPTIONS:

- In-motion Satellite Dish⁴
- Exterior Slide-out Tray
- 15 K AC (Front w/ Heat)
- 13.5 K AC (Mid- No Heat)
- 15 K AC (Rear- w/ Heat)
- Prep for Solar Panels
- One Solar Panel
- Three Solar Panels
- CB Antenna
- Wi-Fi Ranger
- Prep for Winegard® TRAV'LER⁵

GENERAL INTERIOR

- High Gloss Flat Panel Hardwood Cabinet Doors
- Solid Wood Cabinet Fascias
- Soft Touch Vinyl Ceiling
- Flat Panel TV in Entertainment Center
- Ceramic Tile Flooring in Living Room Area and Bath Area
- Barcelona Tile Floor
- Treated Carpet and Fabrics
- Ball Bearing Drawer Slides
- Solar and Privacy Shades
- Power Roof Vents
- Tank Level Monitor System
- Smoke Detector
- Truma Gas Continuous Water Heater
- Power Step Well Cover
- 2000 Watt Sine Wave Inverter
- Carbon Monoxide Detector
- LED Lighting
- Extraordinaire™ AC System
- LPG Leak Detector
- Home Theater Surround Sound System (Includes DVD Player)

AVAILABLE OPTIONS:

- Central Vacuum Cleaner
- Stacked Washer/Dryer
- All-electric Coach: Includes Aqua-Hot Hydronic Heating System with Continuous Hot Water
- Amber Glazed, English Chestnut, or Mocha Solid Cabinet Doors and Drawer Fronts
- Durrie Beige, Silver Light, or Taos Taupe Fabric Suites
- Pietre Del Norde Alaska Tile Floor
- Belgian, Cocoon, or White Maple Ultraleather

DRIVER COMPARTMENT/COCKPIT

- Tilt and Telescoping Steering Wheel
- Adjustable Brake and Accelerator
- Wood Drawers in Dash
- Digital Instrument Panel
- CD Player and AM/FM Stereo
- Overhead Flat Panel TV
- 12 V Dash Receptacle
- Power Solar and Privacy Windshield Shades
- House Battery Disconnect Switch
- USB Dash Receptacle
- Fire Extinguisher
- Solid Non-opening Window on Passenger Side
- Manual Solar and Privacy Shades on Side Windows
- Adjustable Seatbelt Brackets
- Ultraleather Power Driver and Passenger Seats
- Ultraleather Power Passenger Seat with Footrest
- Satellite-ready Radio (subscription required)
- Overhead Flat Panel TV

AVAILABLE OPTIONS:

- In-dash Navigation System
- Vertical Slide Opening Window on Passenger Side

LIVING AREA/DINETTE

- Ultraleather Booth Dinette (Sleeper) on Driver Side
- Ultraleather Air Coil Hide-a-Bed Sofa on Driver Side

AVAILABLE OPTIONS:

- Ultraleather U-shaped Dinette on Driver Side
- Ultraleather L-shaped Sofa on Driver Side
- Dinette with Computer Workstation on Driver Side
- Fireplace Below Flat Panel TV in Entertainment Center

KITCHEN

- Double Bowl Kitchen Sink with Single Lever Chrome Faucet
- Solid Surface Galley Countertop
- Solid Surface Backsplashes
- 3-burner Cooktop with Convection Microwave
- Panoramic Galley Window
- Residential Refrigerator⁶
- Expand-an-island

AVAILABLE OPTIONS:

- Oven with Convection Microwave
- Dishwasher

BEDROOM

- Wardrobe with Automatic Light
- Bed Comforter with Throw Pillows
- Flat Panel TV
- Carpeted Flooring
- Memory Foam Queen Mattress (60" x 80")
- Solar/Privacy Shades
- Bedroom Ceiling Fan
- Bunk Beds with Convertible Wardrobe

AVAILABLE OPTIONS:

- Memory Foam King Bed Mattress (72" x 80")

BATH

- Medicine Cabinet
- Skylight and LED Light in Shower
- Molded One-piece Fiberglass Shower
- Solid Surface Vanity Top
- Roof Vent Fan

¹ The approximated coach width and length does not include side-view mirrors and rear ladder.

² Maximum Trailer Weight is dependent on the loading and towing variables which include the GVWR, GAWR, and GCWR, as well as adequate trailer brakes. Please refer to the operator's manual of your vehicle chassis for further towing information.

³ Diesel Exhaust Fluid (DEF) is the active component used in Selective Catalytic Reduction (SCR) engines to reduce nitrogen oxide emissions by 90% to meet EPA standards.

⁴ High-definition programming is not available on a domed satellite antenna unless you subscribe to DISH Network®.

⁵ In-Motion Satellite Dish and Prep for Winegard TRAV'LER cannot be optioned together on the 33 AA.

⁶ Requires All-electric option for 33 AA.

All options may not be available in every model. Because of progressive improvements, specifications, standard and optional equipment are subject to change without notice or obligation.