

## WHY BUY A TIFFIN MOTORHOME?

### The Best Limited Warranty in the Business

#### 10-YEAR UNITIZED CONSTRUCTION WARRANTY

THE STRUCTURAL INTEGRITY OF THE ENTIRE COACH IS GUARANTEED FOR THE NEXT 10 YEARS. THIS INCLUDES WALL SEPARATION AND INNER FRAME WEAKNESS.

#### 5-YEAR "HYDRA-VAC" LAMINATION WARRANTY

WE GUARANTEE AGAINST ALL EXTERIOR FIBERGLASS DELAMINATION OR WALL SEPARATION.

We can make these guarantees, and no one else can come close to these, because we take the extra steps and make the extra investment in the building methods and materials that support these extraordinary guarantees. It's not the cheapest way to build motorhomes, but it is the best way. It's the Tiffin way.

### Service After the Sale

The feeling of freedom, of being able to go anywhere you want, is something that can't really be put into words. It's kind of like the feeling you get when buying a Tiffin. It's a freedom, too. A kind of confidence and peace of mind that you just can't get from other manufacturers. We not only stand behind every coach we sell, but we stand behind every customer as well. Because we don't want anything to detract from your unique experiences exploring the world in a Tiffin. So when you slide behind the wheel of one of our motorhomes, just look over your shoulder. There's an entire company riding right there behind you—every mile of the way.

DEALER:

[www.tiffinmotorhomes.com](http://www.tiffinmotorhomes.com)

# PHAETON







At times,  
you just want to lose yourself.  
For others, there's our computer  
navigational system.

With the 2005 Phaeton from Tiffin Motorhomes, it's easy to forget your troubles. The large living area, fully equipped kitchen and big diesel pusher all provide the means to get away. But they also offer peace of mind, because they're all part of a vehicle backed by one of the best warranties in the business. With the Phaeton we offer features like a computer navigational system and flat screen TVs, but more importantly we offer the same unparalleled customer service that comes with all of our coaches. Because for all the times you get out on the road to lose yourself, it's nice to know you're never really alone.





## PHAETON COCKPIT



The standard Ultra Leather Flexsteel® seats, sitting atop the STURDY CHASSIS, give both the driver and front seat passenger a smooth, steady ride while the huge one-piece windshield offers a sweeping, UNOBSTRUCTED VIEW OF THE ROAD ahead. Both

front seats can be unlocked and swiveled around to add EXTRA SEATING in the living room, where the standard FLAT SCREEN TV and SURROUND SOUND SYSTEM offer the best in entertainment. Adding to the overall appearance and comfort, OVERHEAD EXTERIOR AC DRAINS channel rooftop condensation away from the windows and front door.



## PHAETON LIVING AREA



BRONZE

The SPACIOUS LIVING AREA is highlighted by the SEVEN-FOOT HIGH CEILING and is accented by the ABUNDANCE of CABINET STORAGE throughout. The Armstrong® plank flooring is standard on the landing, kitchen

and bathroom floors. The galley features a STAINLESS STEEL SINK with pullout faucet, SATIN NICKEL HARDWARE, a convection microwave, cook top and a side-by-side REFRIGERATOR with solid hardwood, raised door inserts.



## PHAETON BEDROOM



BRONZE



Along with the ROOMY, MIRRORED CLOSET and numerous overhead cabinets, the bedroom has a chest of drawers that features a LAUNDRY HAMPER. There's an optional

king size bed, and every bedroom slide has a headboard flanked by a window that provides a SOOTHING CROSS-BREEZE while relaxing in front of the FLAT SCREEN TV.



## PHAETON BATHROOM

## FABRICS & CABINETS



### BRONZE



Bedroom



Bedroom Accent



Sofa



Living Area Accent



Natural Maple

### PALM BEACH



Bedroom



Bedroom Accent



Sofa



Living Area Accent



Oak

### PLATINUM



Bedroom



Bedroom Accent



Sofa



Living Area Accent



Walnut



Carpet

RAIN GLASS SHOWER DOORS come standard, and all hardware has a satin finish. Along with our frames and cabinets, we also manufacture all of our own fiberglass parts locally, helping to ensure the most stringent QUALITY control.

Our fabric designs and choices of wood grain are sure to suit every taste. All cabinet finishes are available in combination with all fabric schemes.



# EXTERIOR PAINT COLORS

# PHAETON FLOORPLANS '05



**TITANIUM PEARL** FULL BODY



**FOREST ROSE** FULL BODY



**SUNLIT SAND** FULL BODY



**TITANIUM PEARL** WHITE BODY



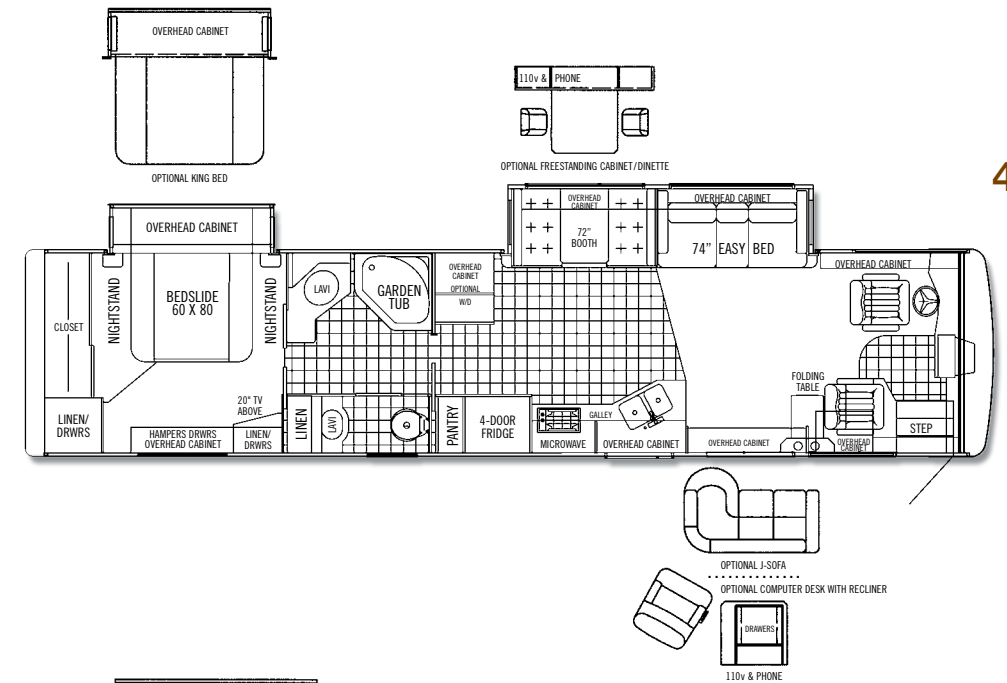
**FOREST ROSE** WHITE BODY



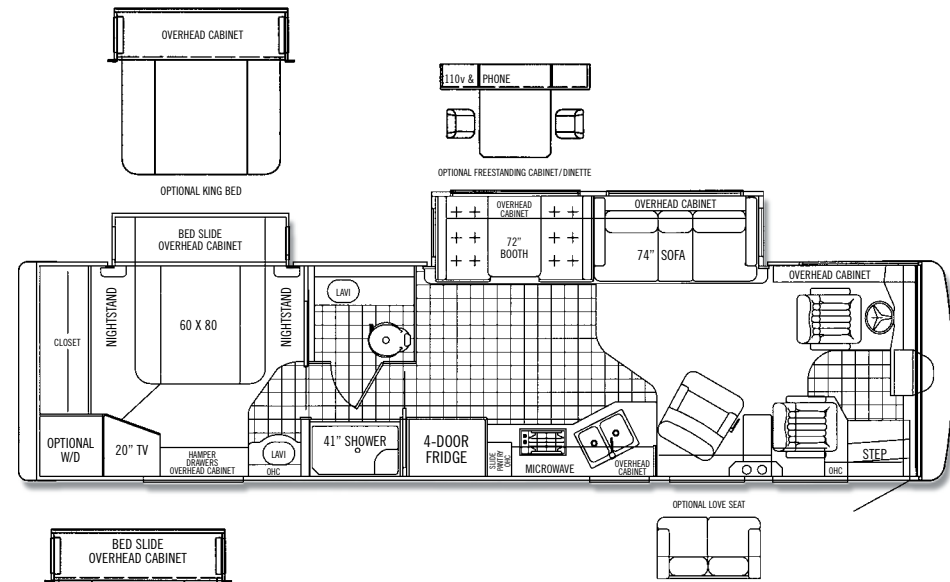
**SUNLIT SAND** WHITE BODY

We offer a variety of exterior paint packages.

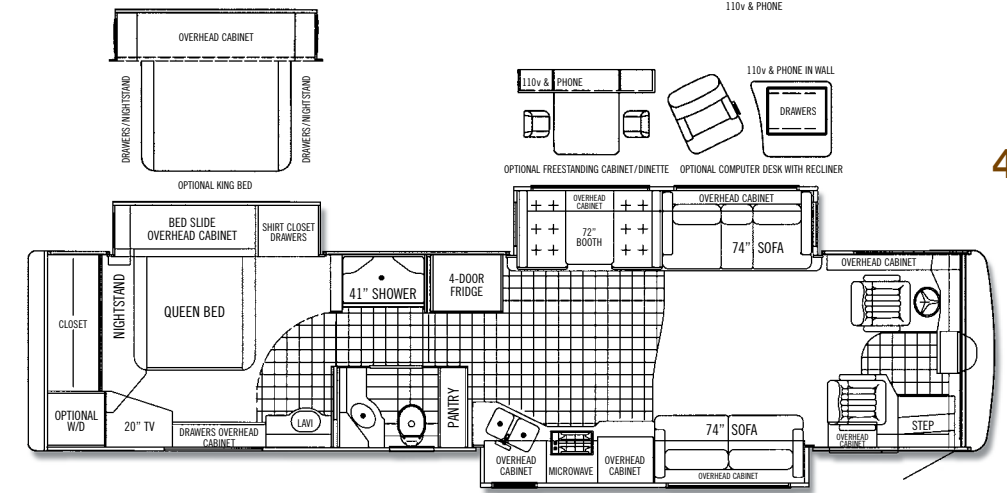
Aside from our unparalleled customer service, one of the things that Tiffin has been known for over the years is innovative, functional floorplans.



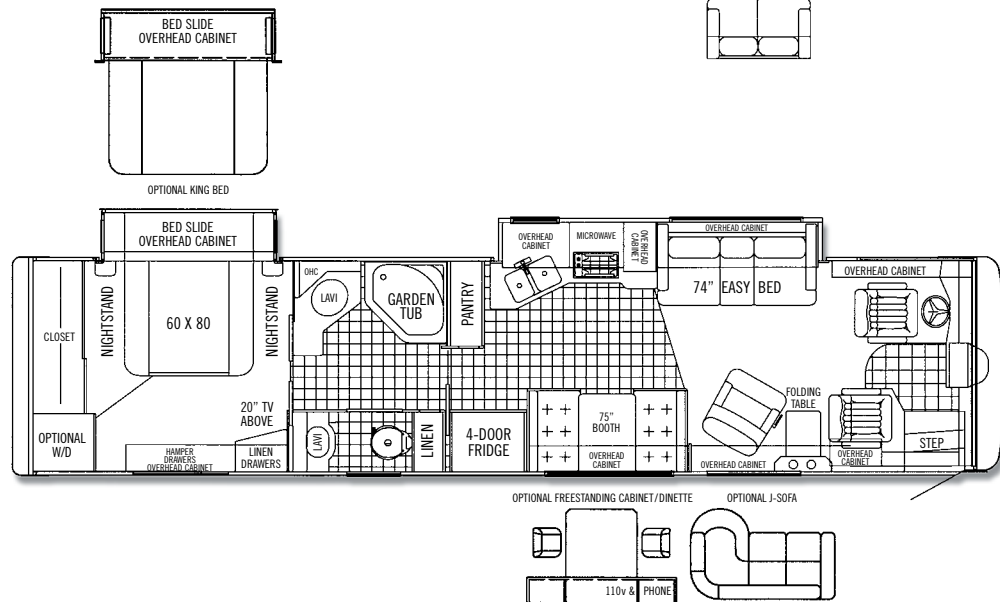
**40 RH**



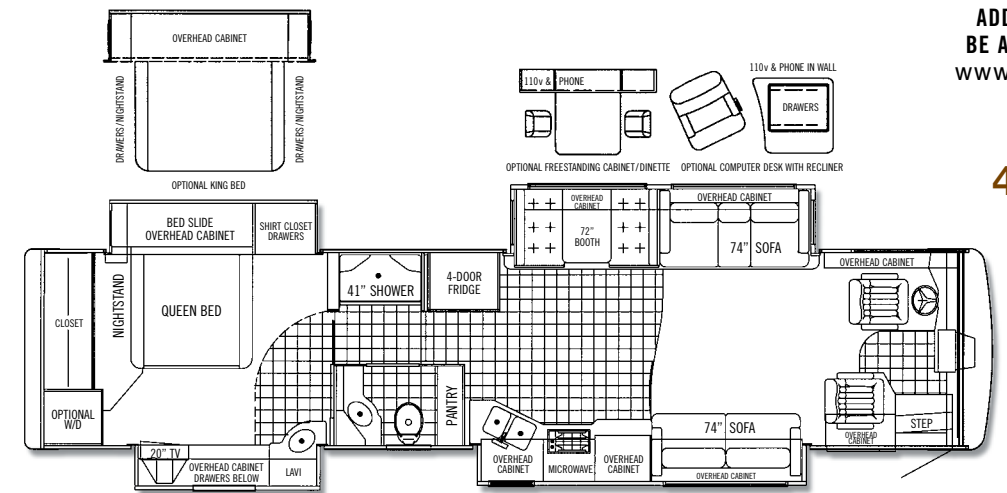
**35 DH**



**40 TSH**



**38 GH**



**40 QDH**

ADDITIONAL FLOORPLANS MAY BE AVAILABLE ON OUR WEBSITE. [www.tiffinmotorhomes.com](http://www.tiffinmotorhomes.com)

## AUTOMOTIVE

### STANDARD EQUIPMENT ON ALL MODELS:

- Raised Rail Chassis Frame
- Allison 3000 MH Six-speed Automatic Transmission with Lock-up
- Automatic Leveling Jacks
- Emergency Start Switch
- Air Ride (4 Bags)
- Air Brakes with Automatic Slack Adjusters
- Cruise Control
- Exhaust Brake
- Caterpillar Engine 350 HP
- ABS Brakes
- Michelin Tires

FREIGHTLINER CHASSIS	MODEL	35 DH	38 GH	40 RH	40 TSH	40 QDH
GVWR		29,410	29,410	29,410	29,410	29,410
GAWR – Front		10,410	10,410	10,410	10,410	10,410
GAWR – Rear		19,000	19,000	19,000	19,000	19,000
GCWR		39,410	39,410	39,410	39,410	39,410
Cummins 300 ISB Engine		0	NA	NA	NA	NA
Alternator Amps		130	130	130	130	130
Wheel Base		208	252	266	266	266
Tire Size		275/80R22.5	275/80R22.5	275/80R22.5	275/80R22.5	275/80R22.5
Trailer Hitch Capacity		10,000	10,000	10,000	10,000	10,000
Fuel Tank (Gallons) - Dual Fuel Fill		100	100	100	100	100

OVERALL	MODEL	35 DH	38 GH	40 RH	40 TSH	40 QDH
Overall Length – Approximately		35' 6"	38' 11"	40' 5"	40' 5"	40' 5"
Overall Height with Roof Air (Maximum)		12' 7"	12' 7"	12' 7"	12' 7"	12' 7"
Interior Height		83"	83"	83"	83"	83"
Overall Width		101"	101"	101"	101"	101"
Interior Width		96"	96"	96"	96"	96"
Fresh Water (Gallons)		90	90	90	90	90
Black Water (Gallons)		45	45	45	45	45
Grey Water (Gallons)		70	70	70	70	70
LPG Tank (Gallons; can only be filled to 80% capacity)		35.7	35.7	35.7	35.7	35.7
Minimum Garage Height		13'	13'	13'	13'	13'

## STRUCTURAL

### STANDARD EQUIPMENT ON ALL MODELS:

- Laminated Floor, Sidewall & Roof
- Steel / Aluminum Reinforced Structure

## EXTERIOR

### STANDARD EQUIPMENT ON ALL MODELS:

- Fiberglass Front & Rear Caps
- Dual Fuel Fills
- Large Tinted One Piece Windshield
- Fog Lights
- 7.5 Kw Onan Manual Slide-out Generator
- Heated Power Mirrors with Remote Adjustment
- Single Motor Intermittent Wiper
- Gel-Coat Fiberglass Walls
- Exterior Graphics
- Deadbolt Front Entrance Door
- Double Electric Step
- Dual Pane Windows
- Exterior Patio Light
- Automatic Patio Awning
- Slideout Awnings
- Wheel Liners
- Mud Flap
- Exterior Flip-up Storage Doors with Gas Shocks
- Single Handle Lockable Storage Door Latches
- Lighted Exterior Storage
- Docking Lights
- Heated Water and Holding Tank Compartments
- Two 6v Auxiliary Batteries
- 2000 Watt Inverter with 100 Amp Converter & Transfer Switching + Four 6v Batteries
- Park Telephone Ready
- Cable Ready TV
- Exterior Tank Flush System
- 110v Exterior Receptacle
- 110v/12v Converter
- Undercoating
- Domed Fiberglass Roof
- TV Antenna
- CB Antenna
- Power Fantastic Roof Vent with 3-speed Fan
- 2 - 15,000 BTU High Profile Roof A/C with Heat Pump
- A/C Condensation Drains
- Roof Ladder
- Backup Camera and Monitor
- Water Filter

	MODEL	35 DH	38 GH	40 RH	40 TSH	40 QDH
Full Body Paint		0	0	0	0	0
Spotlight		0	0	0	0	0
Manual Door Awning		0	0	0	0	0
Power Door Awning		0	0	0	0	0
Window Awning Package		0	0	0	0	0
Slideout Rooms		2	2	2	3	4
Aluminum Wheels		0	0	0	0	0
Exterior Storage Slide Out Tray		0	0	0	0	0
Hadley Air Horns		0	0	0	0	0
Semi-Automatic Satellite Dish		0	0	0	0	0
Automatic Satellite Dish		0	0	0	0	0
Cell Phone Antenna		0	0	0	0	0

## DRIVER'S COMPARTMENT

### STANDARD EQUIPMENT ON ALL MODELS:

- Flexsteel Ultra Leather Power Driver and Passenger Seats with Foot Rest
- Dual Dash Fans
- 12v Dash Receptacle
- 24" Flat Screen Color TV
- Windshield Privacy Curtain
- Snack / Beverage Tray with Drawers
- Single CD Player AM/FM Stereo
- Fire Extinguisher
- Automotive Padded Dash
- Step Switch and 12v Disconnect Switch
- VCR

## DRIVER'S COMPARTMENT cont'd

	MODEL	35 DH	38 GH	40 RH	40 TSH	40 QDH
6 Disc CD Changer - In Dash		0	0	0	0	0
Power Sun Visors		0	0	0	0	0
Computer Navigational System		0	0	0	0	0
Chrome Mirrors		0	0	0	0	0

## LIVING AREA/DINETTE

### STANDARD EQUIPMENT ON ALL MODELS:

- Cloth Easy Bed (Flexsteel)
- Booth Dinette with Laminate Table Top and Solid Surface Edging

	MODEL	35 DH	38 GH	40 RH	40 TSH	40 QDH
Cloth Recliner (Flexsteel) with Folding Table		S	S	S	NA	NA
Computer Desk / Main Living Room Slide with Recliner		NA	NA	NA	0	0
Ultra Leather Recliner (Flexsteel)		0	0	0	0	0
Ultra Leather J-Lounge Sofa (Flexsteel)		NA	0	0	NA	NA
Love Seat		0	NA	NA	NA	NA
Ultra Leather EZ Bed Sofa		0	0	0	S	S
Cloth Magic Bed		0	0	0	0	0
Ultra Leather Magic Bed		0	0	0	0	0
Cloth Hide-a-bed		0	NA	0	S	S
Ultra Leather Hide-a-bed		0	NA	0	0	0
Free Standing Dinette with Laminate Table Top Solid Surface Edging & Built-in Cabinet		0	0	0	0	0

## KITCHEN

### STANDARD EQUIPMENT ON ALL MODELS:

- Solid Surface Counter Top with Stainless Steel Sink
- Single Lever Sink Faucet with Pullout
- Side-by-side Refrigerator with Ice Maker
- Solid Surface Sink and Stove Covers
- Convection / Microwave with Large Drawer

	MODEL	35 DH	38 GH	40 RH	40 TSH	40 QDH
Convection / Microwave / Gas Oven		0	0	0	0	0

## BATH

### STANDARD EQUIPMENT ON ALL MODELS:

- Medicine Cabinet with Vanity Light
- Solid Surface Vanity Top & Bowl
- Fiberglass Molded Tub or Shower
- Rain Glass Shower Door
- Skylight in Shower
- China Toilet

	MODEL	35 DH	38 GH	40 RH	40 TSH	40 QDH
Garden Tub		NA	0	0	NA	NA
Extra Fantastic Fan		0	0	0	0	0

## BEDROOM

### STANDARD EQUIPMENT ON ALL MODELS:

- Wardrobe
- Inner Spring Mattress
- 20" Color TV in Bedroom
- LPG Leak Detector
- Bed Comforter with Throw Pillows
- Night Stands
- Carbon Monoxide Detector
- Chest of Drawers with Laundry Hamper
- Bed Slide with Built-in Storage

	MODEL	35 DH	38 GH	40 RH	40 TSH	40 QDH
Pillow Top Mattress		0	0	0	0	0
King Bed		0	0	0	0	0

## GENERAL INTERIOR

### STANDARD EQUIPMENT ON ALL MODELS:

- 7' Ceilings
- Soft Touch Vinyl Ceiling
- Armstrong® Plank Flooring in Kitchen, Bath & Entrance Landing
- Carpeting in Bedroom & Driver's Compartment with Scotchgard®
- Raised Panel Hardwood Cabinet Doors
- Oak Cabinetry (Simulated)
- Treated Carpet and Fabrics
- Day / Night Pleated Shades
- 12 Volt Fluorescent Lights
- Home Theatre Sound System
- Power Roof Vents with 3 Speed Fans
- Tank Level Monitor System
- Smoke Detector
- 10-Gal Gas / Electric Water Heater
- Air Driven Step Well Cover

	MODEL	35 DH	38 GH	40 RH	40 TSH	40 QDH
Natural Maple Cabinetry (Simulated)		0	0	0	0	0
Walnut Cabinetry (Simulated)		0	0	0	0	0
Ceramic Tile Flooring on Kitchen, Bath & Entrance Landing		0	0	0	0	0
Washer / Dryer		0	0	0	0	0
Plumbed for Washer / Dryer with Cabinet		0	0	0	0	0
Central Vacuum Cleaner		0	0	0	0	0
One 42,000 BTU Ducted Furnace		S	NA	NA	NA	NA
One 35,000 BTU Ducted Furnace & One 20,000 BTU Ducted Furnace		NA	S	NA	NA	NA
One 42,000 BTU Ducted Furnace & One 20,000 BTU Ducted Furnace		NA	NA	S	NA	NA
Two 30,000 BTU Ducted Furnaces		NA	NA	NA	S	S