

WildwoodTM *LE* & WildwoodTM BY FOREST RIVER



"the time is now"

Travel Trailers & Fifth Wheels



time to enjoy family...

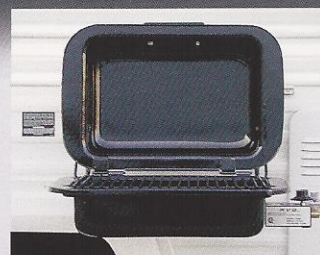
Camping at its finest, this 38FKDS Wildwood™ Travel Trailer features an extra tall 19' flush floor hydraulic slide room, 18.4 cubic foot residential style refrigerator with ice maker. The 84" interior height on this model not only allows for extra large 24" overhead cabinets that greatly increase usable storage space, but also lets you choose the optional ceiling paddle fan which greatly increases the heating and cooling efficiencies of your home away from home. Our "Home-style Kitchen" with abundant drawer and counter top space is every cook's dream come true.

Wildwood™
BY FOREST RIVER

WildwoodTM LE

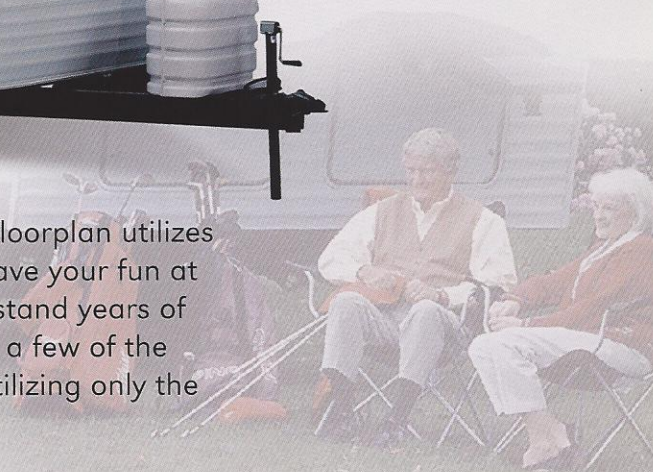
By FOREST RIVER

The WildwoodTM LE is the solution to your travel needs, incorporating the necessary equipment and conveniences at an affordable value.



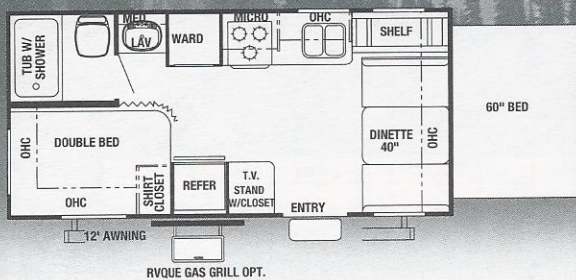
Optional exterior grill.

Affordable luxury is what every WildwoodTM LE is about. Each floorplan utilizes all available storage places to their fullest, so you don't have to leave your fun at home. Our oak framed, mortise and tenon cabinet doors can withstand years of rigorous camping. Magic Chef[®] ovens and A & E awnings are only a few of the brand name appliances we offer as a testament to building and utilizing only the best in your WildwoodTM LE trailers and fifth wheels.

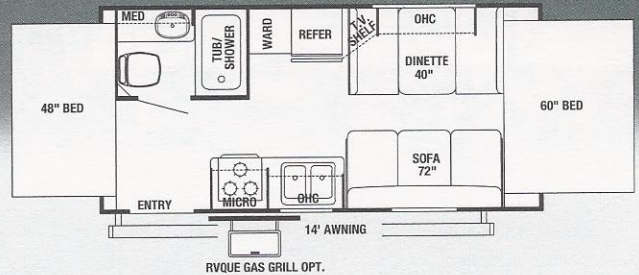


WILDWOOD™ LE TRAVEL TRAILERS

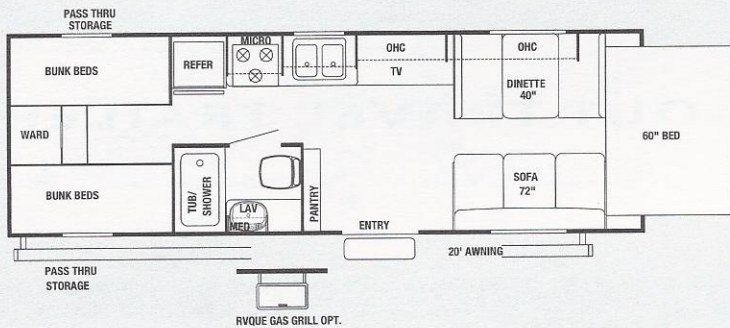
19EXFD



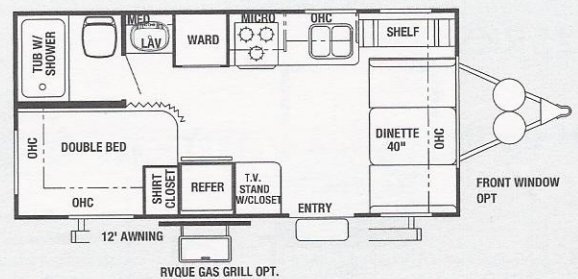
19EX



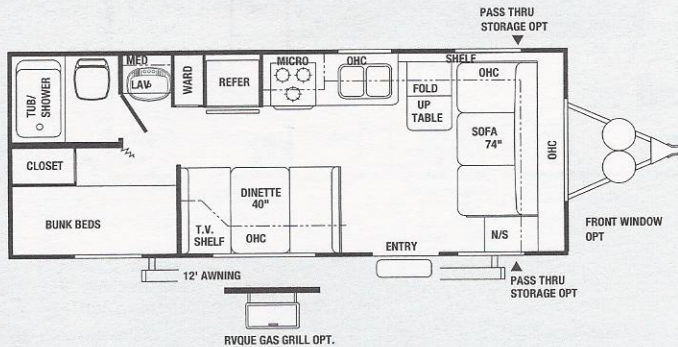
25EX



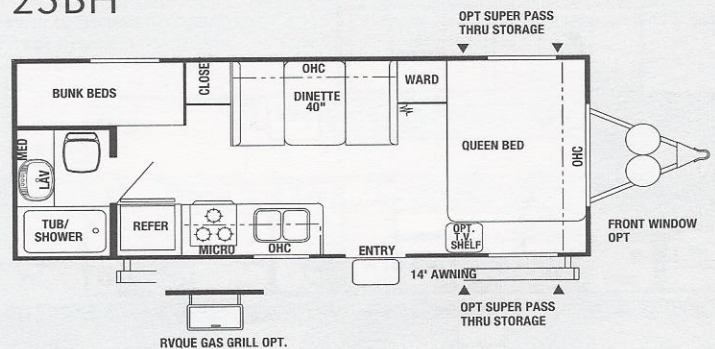
19FD



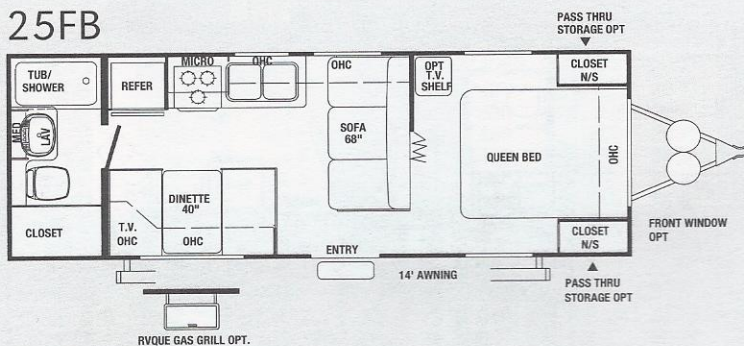
22BH Optional Rear Double Bed with Bunk Above



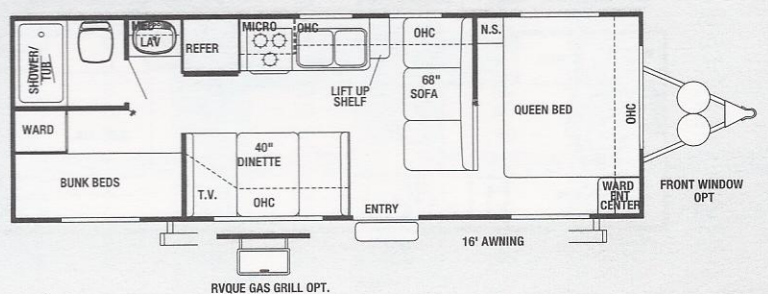
23BH



25FB

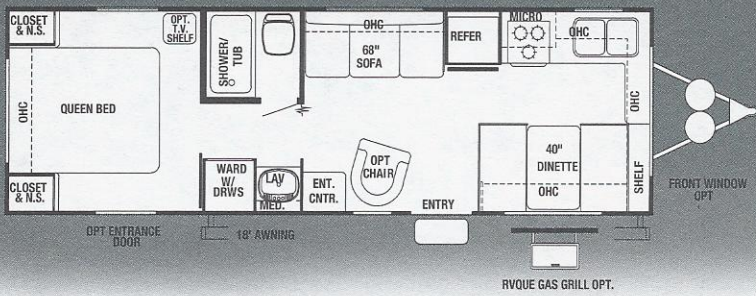


26BH Optional Rear Double Bed with Bunk Above

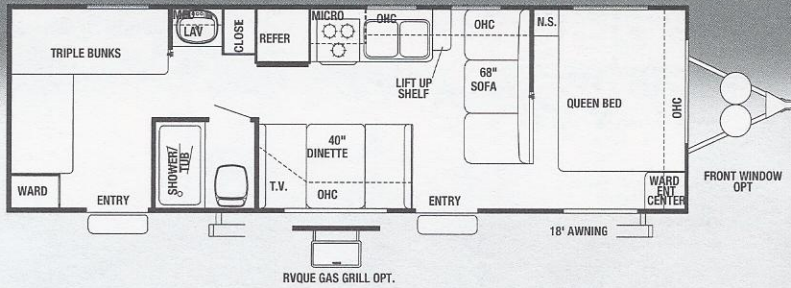


WILDWOOD™ LE TRAVEL TRAILERS

28FK

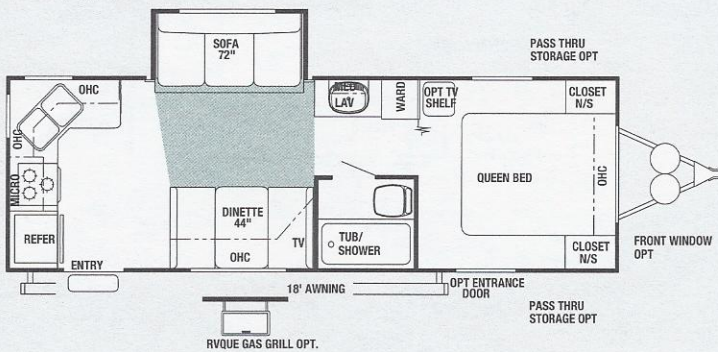


29BH

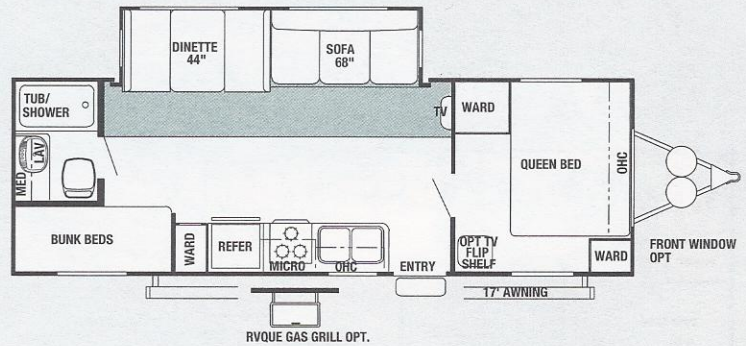


WILDWOOD™ LE SLIDE-OUT TRAVEL TRAILERS

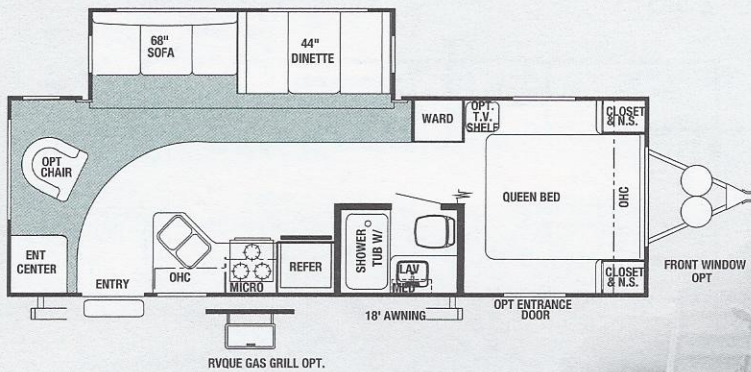
25RKS



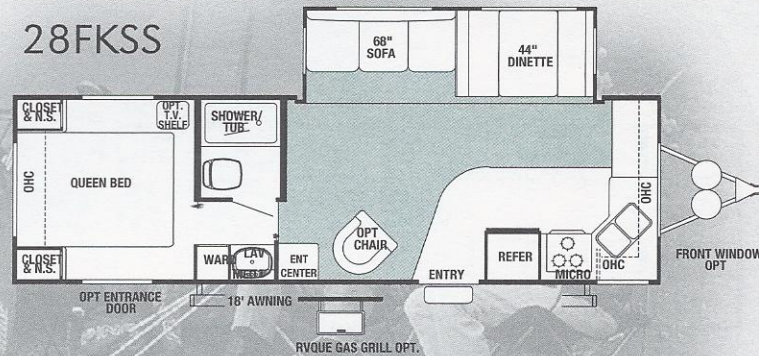
26BHSS



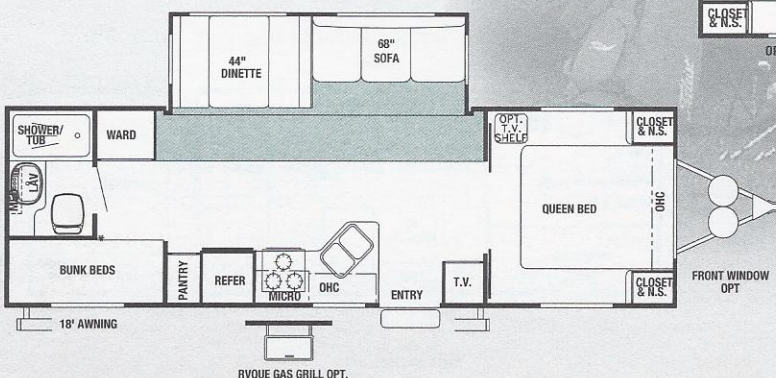
27RLSS



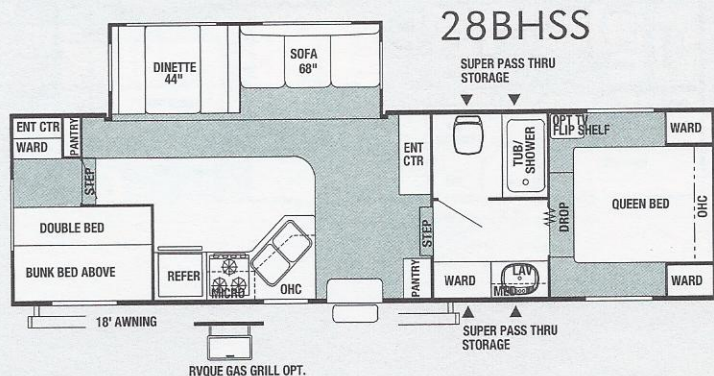
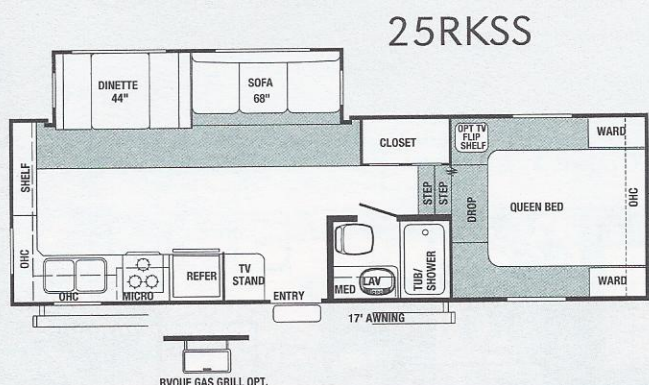
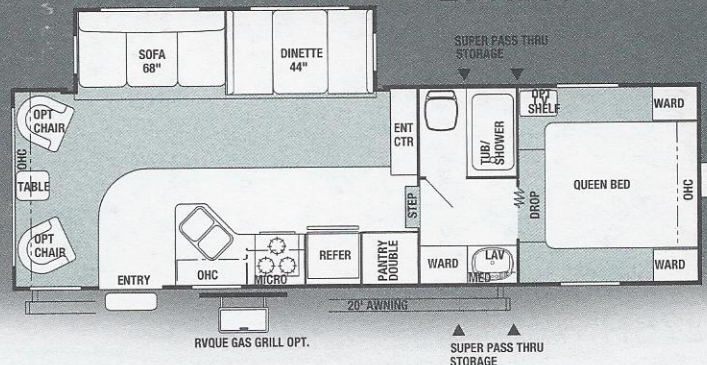
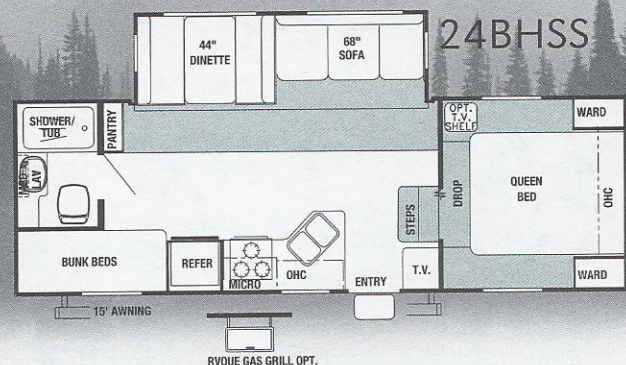
28FKSS



29BHSS



WILDWOOD™ LE SLIDE-OUT FIFTH WHEELS



WILDWOOD™ LE MODELS—STANDARDS

Exterior

- 8' Exterior Width
- Hose Carrier Bumper with End Caps
- Entry Assist Handle
- TPO Vinyl Seamless Roof
- Rain Gutters
- Baked On Enamel Side Graphics
- ABS Fender Skirts
- Roto-cast Holding Tanks
- Hitch Light
- Flush-Mounted Front Rock Guard (opt)
- Fiberglass Insulation
- Radius Clamp Ring Jalousie Windows
- Hickory E-Z Open Entry Step
- DeWald Hydraulic Slide-Out Systems (Flush Floor)
- Champagne Rolled Side Metal (Slides Only)
- Powder Coated I-beam frame
- 1/4" roof decking
- Fiberglass entrance and baggage doors

Interior

- Innerspring Mattress
- 44" Wide Dinette Booths In All Slide-outs
- Extra Large Overhead Cabinets
- Large Pedestal Dinette Tables
- Overhead Medicine Cabinet with Mirror Door
- 12-Volt Power Bath Roof Exhaust Vent
- Four-color coordinated Interiors
- Wall picture
- Arched-Mortise & Tenon Jointed Cabinet Doors
- All-Wood Drawers
- Thetford Fresh-Water Flush Toilet
- Wall-Mounted Towel bar
- 30 oz. carpet w/padding
- 78" interior height (trailers only)

Kitchen

- Stainless Steel Sink
- Flip-Down Silverware Storage Under Sink
- Large Overhead Cabinets
- Wall-Mounted Systems Monitor Panel

Appliances & Equipment

- Dometic® Refrigerator
- Suburban Forced Air DSI Furnace with Thermostat
- In-Floor Rigid Heat Ducting
- Fire Extinguisher
- 50-Gal. Capacity Under Floor Fresh Water System In Heated Compartment
- LP Leak detector
- Suburban 3-Burner, High Output Range
- 6-Gal. LP Water Heater
- Range Hood With 12-Volt Light and Exhaust Fan
- Smoke Detector

LE Options

- A & E Awning
- Microwave Oven
- AM/FM Stereo With Cassette
- AM/FM Stereo With CD Player
- Spare Tire Carrier and Cover
- Exterior Grill
- Pass through storage (per floorplan)
- Swivel rocker (per floorplan)
- Duo Therm Air Conditioner
- Outside Shower
- Double Door Refrigerator
- Rear Double bed w/bunk (per floorplan)
- 2nd entrance door (per floorplan)
- Front window with Rockguard (TT's only)
- Stabilizer Jacks

WILDWOOD™ LE SPECIFICATIONS

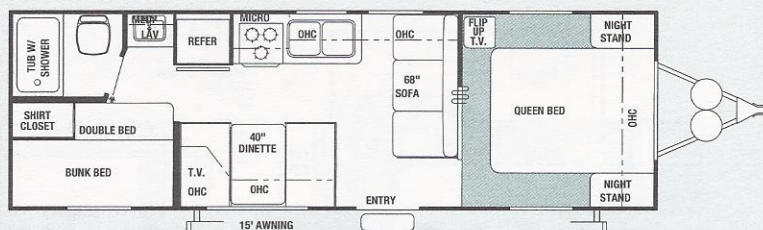
Model No.	Hitch Weight	Axle Weight	Ship* Weight	GVWR	Cargo Capacity	Exterior Length	Exterior Height w/AC	Sleeping Capacity	Fresh Water (Cap.)	Waste Water (Gal.)	Grey Water (Gal.)	LP Capacity (Lbs.)	Furnace BTU	Interior Height
LE Travel Trailer Specifications														
19EXFD	480	3480	3960	7480	3520	20'7"	9'10"	6	50	30	30	40	20	78"
19EX	480	3470	3950	7480	3530	20'7"	9'10"	8	50	30	40	40	20	78"
25EX	680	4130	4810	7680	2870	26'3"	9'10"	10	50	30	30	40	25	78"
19FD	480	3480	3960	7480	3520	20'7"	9'10"	4	50	30	30	40	20	78"
22BH	459	3643	4102	7459	3357	24'3"	9'10"	6	50	30	30	40	20	78"
23BH	557	3503	4060	7557	3497	23'8"	9'10"	6	50	30	30	40	20	78"
25FB	640	4010	4650	7640	2990	26'6"	9'10"	6	50	30	30	40	25	78"
26BH	640	4120	4760	7640	2880	27'7"	9'10"	8	50	30	30	40	25	78"
28FK	900	4505	5405	7900	2495	29'9"	9'10"	6	50	30	30	40	25	78"
29BH	690	4430	5120	7690	2570	31'1"	9'10"	9	50	30	30	40	25	78"
25RKS	520	4330	4850	7520	2670	26'4"	9'10"	6	50	30	30	40	25	78"
26BHSS	680	5060	5740	7680	1940	28'2"	10'5"	8	50	30	30	40	25	78"
27RLSS	680	5230	5910	7680	1770	29'3"	10'5"	6	50	30	30	40	25	78"
28FKSS	1010	4790	5800	8010	2210	29'7"	10'5"	6	50	30	65	40	25	78"
29BHSS	810	5450	6260	10,970	4710	30'10"	10'5"	8	50	30	30	40	25	78"
LE Fifth Wheel Specifications														Bedroom
24BHSS	1050	5000	6050	8050	2000	26'2"	11'5"	8	50	30	30	40	20	68"
25RKSS	1350	5020	6370	8350	1980	27'9"	11'5"	6	50	30	60	40	25	68"
27RLSS	1410	5540	6950	11,570	4620	29'10"	12'2"	6	50	30	60	40	25	72"
28BHSS	1430	6160	7590	11,590	4000	31'3"	12'2"	8	50	30	60	40	25	72"

Wildwood™

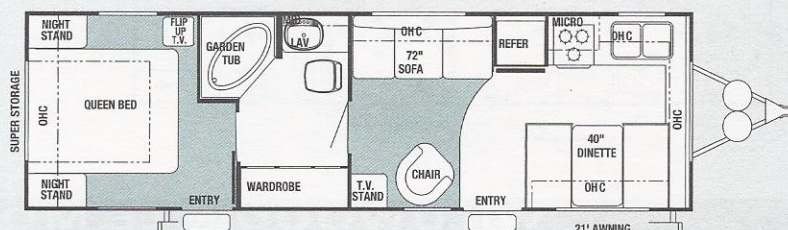
By FOREST RIVER

WILDWOOD™ TRAVEL TRAILERS

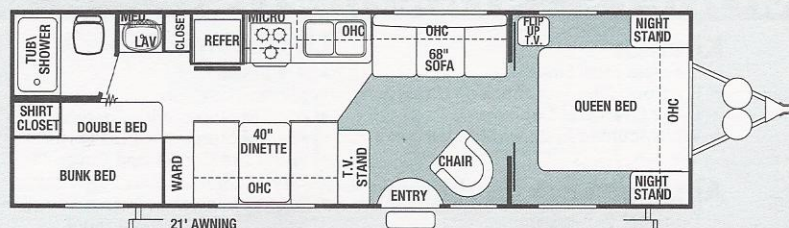
27BH Options 1, 2, C



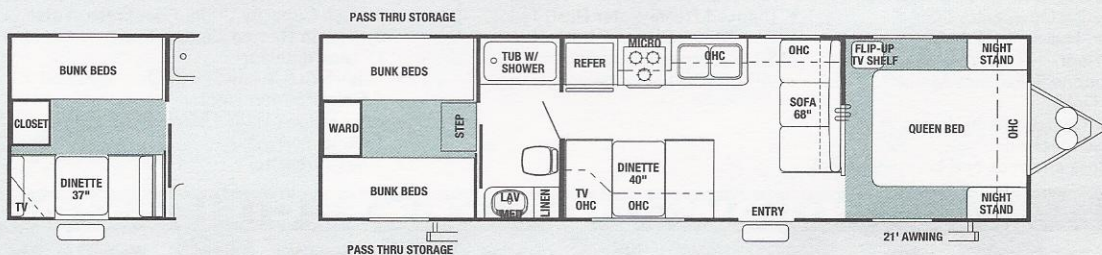
30FK Options 1, 2, A, C



31BH Options 1, 2, C

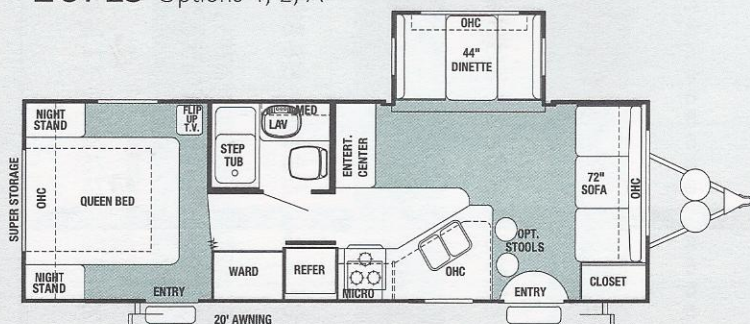


32BH Options 1, 2, C

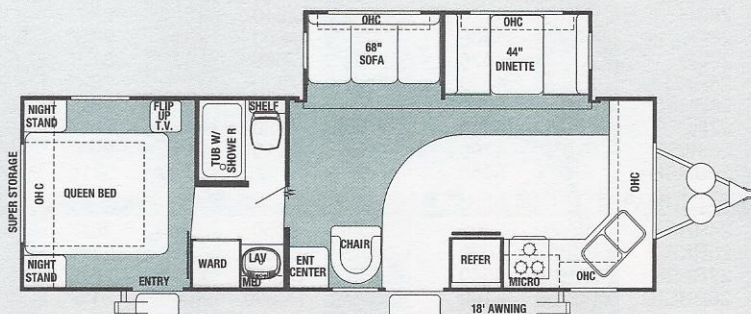


WILDWOOD™ SLIDE-OUT TRAVEL TRAILERS

26FLS Options 1, 2, A



27FKSS Options 1, 2, A, C



Floor plan of the 2014 Airstream 30' Grand Tourer. The layout includes a front entrance with a 21' awning, a living area with a 44" dinette, a 66" sofa, and a night stand. The kitchen area features a refrigerator, microwave, and sink. The bathroom includes a toilet, shower, and a medicine cabinet. The sleeping area has a queen bed and a night stand. The plan also shows a wardrobe, pantry, and a flip-up TV.

2015 Jayco Jay Flight 28BH

21' AWNING

PASS-THRU STORAGE

BUNK BEDS

CLOSET

BUNK BEDS

SHOWER/TUB

LAV

CLOSET

REFR

MICRO

OVC

ENTRY

WARD

QUEEN BED

OHC

WARD

PANTRY

T.V.

OHC

68" SOFA

OHC

44" DINETTE

PASS-THRU STORAGE

30

The floor plan shows a rectangular interior with the following features:

- Top Wall:** Two overhead cabinets (OHC) above a 44" DINETTE and a 68" SOFA.
- Left Wall:** A TUB & SHOWER, a SHIRT CLOSET, and BUNK BEDS.
- Bottom Left:** A REFER (refrigerator) and a MICRO (microwave).
- Center:** An ENTRY area with OPT. STOOLS (optional stools) and a CLOSET T.V. ABOVE (closet with TV mounted above).
- Right Wall:** A large QUEEN BED, two NIGHT STANDS, and two overhead cabinets (OHC).
- Back Wall (Left):** A LAV (lavatory) and a CLOSET.
- Front Wall:** A 18' AWNING is indicated below the entrance.

Floor plan of a mobile home. The layout includes a front porch with a 18' awning, a kitchen area with a refrigerator (REFER), a microwave (W/MICRO BELOW), and a dinette (44" DINETTE). The living area features a 68" sofa and a chair. The bedroom has a queen bed and a night stand. The bathroom includes a garden tub, a toilet, and a vanity (LAV). The plan also shows a wardrobe (WARD), a linen closet (LINEN), and a storage area (SUPER STORAGE). The entrance is marked as ENTRY.

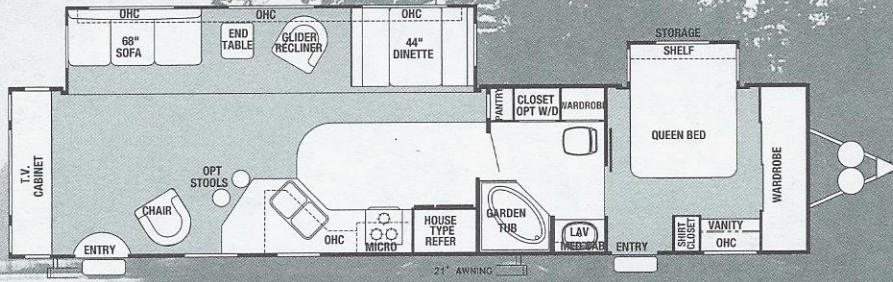
2015 AIRSTREAM 30'

44" DINETTE, 68" SOFA, CHAIR, OPT STOOLS, 37" DINETTE, OHC, ENTRY, KITCHEN (REF, MICRO, SINK, STOVE), BATH (TOILET, SINK, SHOWER), GARDEN TUB, WARD, BUNK BEDS, QUEEN BED, NIGHT STAND, FLIP UP TV, 21' AWNING

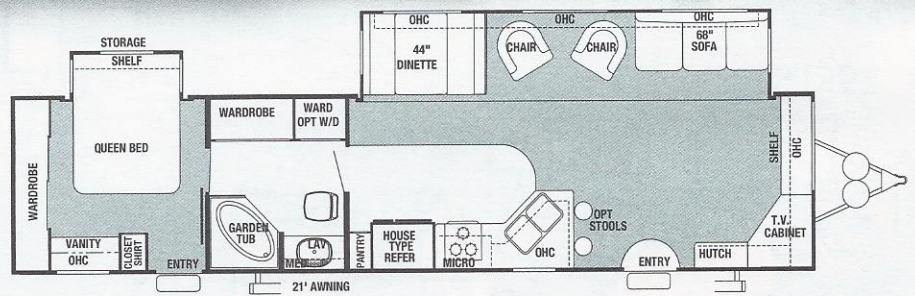
21' AWNING

This floor plan features a large central living area with a green carpet. On the left, there is a bedroom with a **QUEEN BED** and a **STORAGE SHELF** above it. A **WARDROBE** is located to the left of the bedroom. The bathroom includes a **GARDEN TUB** and a **LINEN** closet. The kitchen area on the right contains a **PANTRY**, a **HOUSE TYPE REFER**, a **MICRO** (microwave), and a **CABINET**. Other features include a **VANITY**, a **WARDROBE OPT W/D CLOSET**, a **T.V. STAND**, and a **CHAR** (charcoal) unit. The plan also shows a **68" SOFA** and a **44" DINETTE**. The overall dimensions are 21' x 11'.

38RLDS Option C



38SLDS Option C



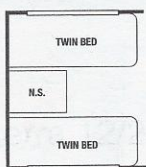
WILDWOOD™ TRAVEL TRAILER SPECIFICATIONS

Model No.	Hitch Weight	Axle Weight	Ship* Weight	GVWR	Cargo Capacity	Exterior Length	Exterior Height w/AC	Sleeping Capacity	Fresh Water (Cap.)	Waste Water (Gal.)	Grey Water (Gal.)	Water Heater Cap. (Gal.)	LP Capacity (Lbs.)	Furnace BTU	Interior Height
Standard															
27BH	600	4610	5210	7600	2390	28'11"	10'1"	8	40	30	30	6	60	30	80"
30FK	690	4730	5420	7690	2270	32'0"	10'1"	6	40	44	30	6	60	30	80"
31BH	540	5120	5660	7540	1880	32'5"	10'1"	8	40	30	30	6	60	30	80"
32BH	720	5140	5860	7720	1860	32'9"	10'1"	10	40	40	30	6	60	30	80"
26FLS	1010	5290	6300	8010	1710	28'11"	10'1"	6	40	30	30	6	60	30	80"
27FKSS	1295	5230	6525	8295	1770	30'0"	10'9"	6	50	30	60	6	60	30	80"
28FLSS	1250	5435	6685	8250	1565	29'9"	10'9"	6	50	30	30	6	60	30	80"
29QBSS	1005	6230	7235	11,165	3930	31'10"	10'9"	10	50	30	30	6	60	30	80"
29RLSS	830	6120	6950	10,990	4040	29'9"	10'9"	6	50	30	30	6	60	30	80"
30BHSS	970	6085	7055	11,130	4075	31'3"	10'9"	8	40	30	30	6	60	30	80"
30FKSS	1135	5525	6660	11,295	4635	31'11"	10'9"	6	50	40	60	6	60	30	80"
37BHSS	865	6840	7705	11,025	3320	38'3"	10'9"	8	50	30	30	6	60	30	80"
38FKDS	1650	8330	9980	11,810	1830	40'7"	11'3"	6	50	44	60	6	60	30	84"
38RLDS	1570	8430	10,000	11,730	1730	40'7"	11'3"	6	50	30	30	6	60	30	84"
38SLDS	1450	8570	10,020	11,610	1590	40'7"	11'3"	6	50	40	30	6	60	30	84"

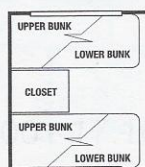
*Ship weights and listed specs above do not include options.

Model number does not necessarily reflect the overall length of a particular unit.

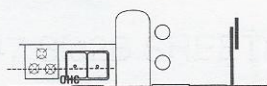
WILDWOOD™ TRAVEL TRAILER OPTIONS



**Twin Beds
Option A**

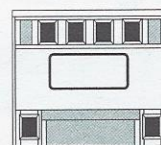


**4 Bunks
Option B**

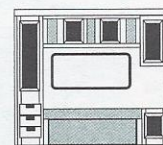


**Patio Door
Option C**

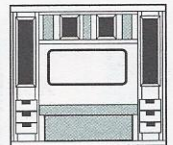
Standard



Option 1



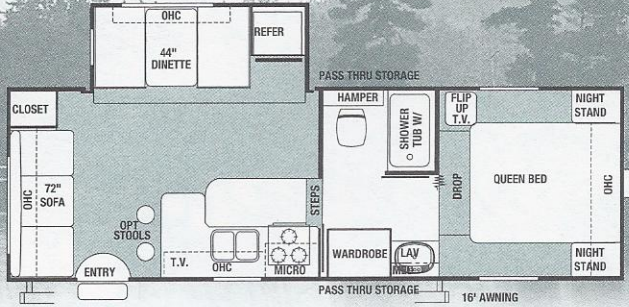
Option 2



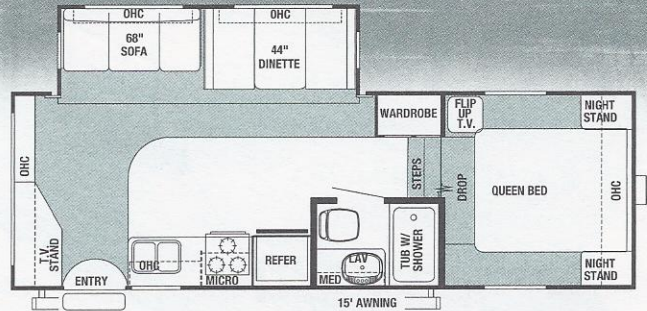
Wardrobe options for walk-around Queen beds

WILDWOOD™ SLIDE-OUT FIFTH WHEELS

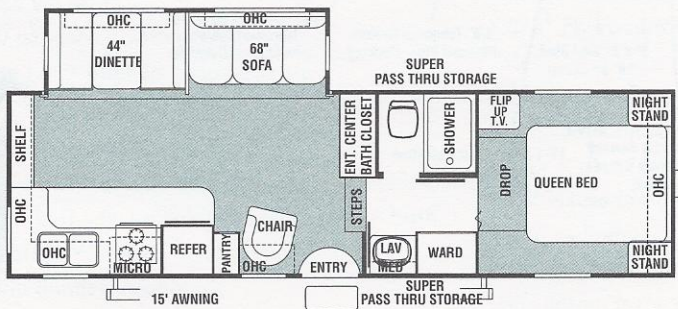
24RLS MID Options 1, 2, A



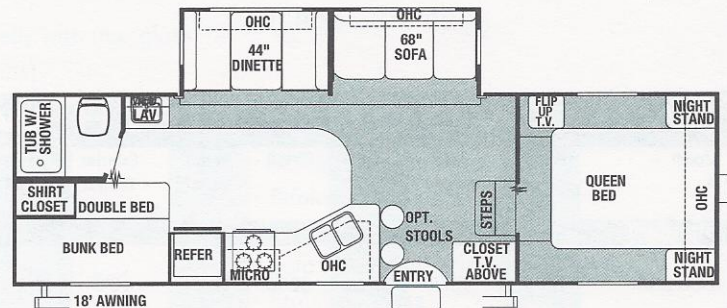
25RLSS MID Options 1, 2, A



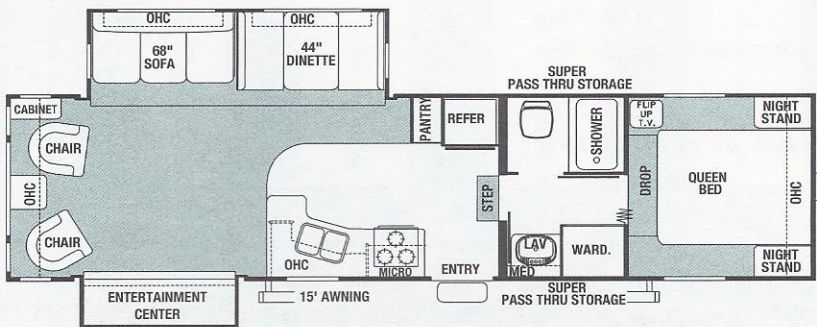
27RKSS HI Options 1, 2, A



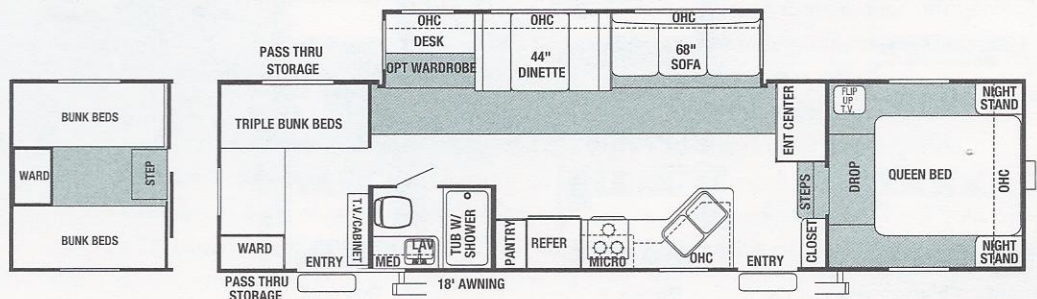
28BHSS MID Options 1, 2, A

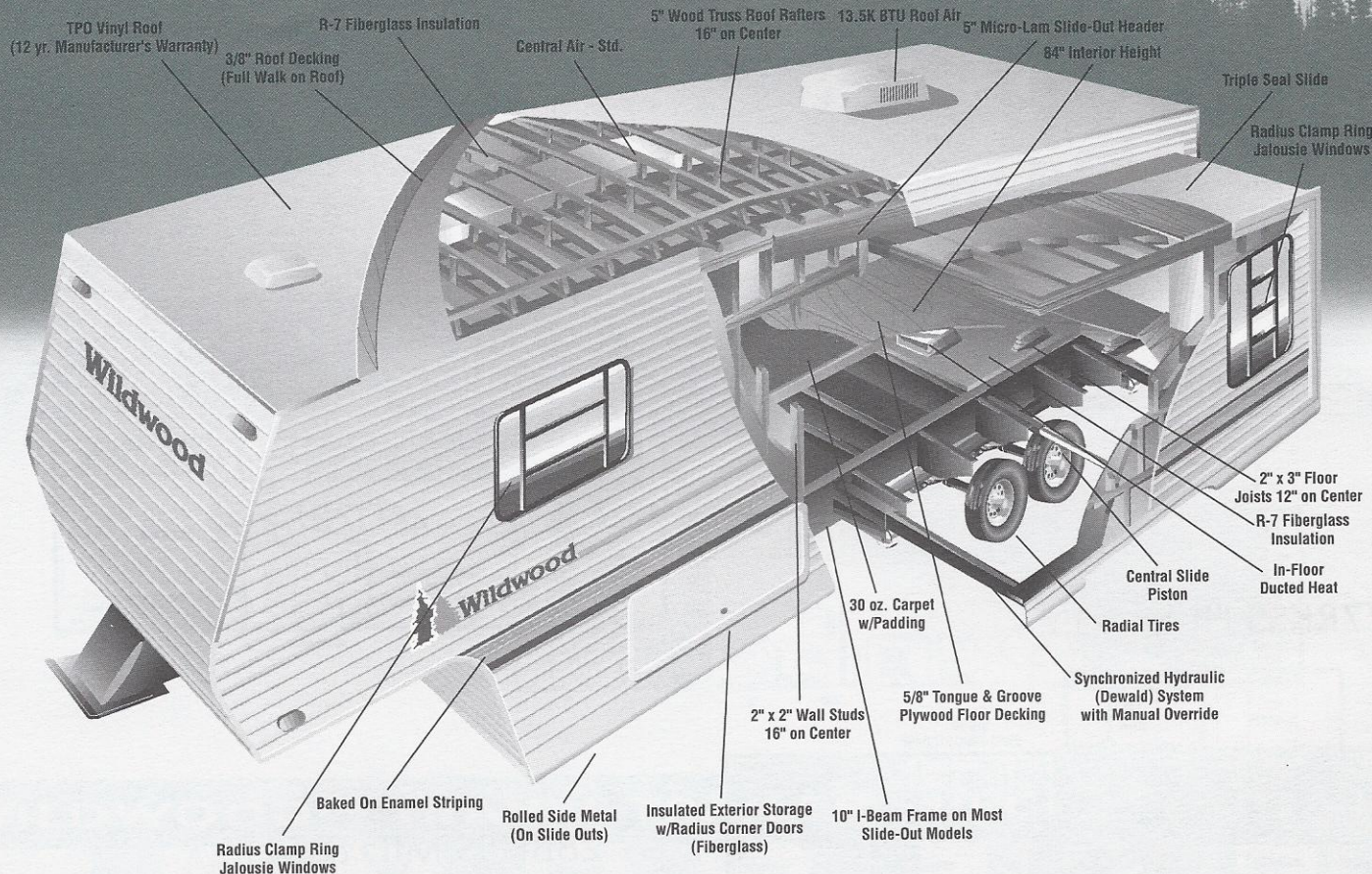


32RLDS HI Options 1, 2, A



32BHSS HI Options 1, 2, A





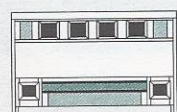
WILDWOOD™ FIFTH WHEEL SPECIFICATIONS

Model No.	Hitch Weight	Axle Weight	Ship* Weight	GVWR	Cargo Capacity	Exterior Length	Exterior Height w/AC	Sleeping Capacity	Fresh Water (Cap.)	Waste Water (Gal.)	Grey Water (Gal.)	Water Heater Cap. (Gal.)	LP Capacity (Lbs.)	Furnace BTU	Bedroom Height
Standard															
24RLS/M	1250	5270	6520	8250	1730	26'8"	11'2"	6	50	30	30	6	60	25	68"
25RLSS/M	1440	5065	6505	8440	1935	25'8"	11'2"	6	50	30	30	6	60	25	68"
27RKSS/H	1210	5820	7030	11,370	4340	28'1"	12'2"	6	50	30	60	6	60	30	77"
28BHSS/M	1430	5930	7360	11,590	4230	30'4"	11'2"	8	50	30	30	6	60	30	68"
32RLDS/H	1100	7970	9070	11,260	2190	33'0"	12'2"	6	50	30	75	6	60	30	68"
32BHSS/H	1630	7200	8830	11,790	2960	33'2"	12'2"	9	50	30	30	6	60	30	77"

*Ship weights and listed specs above do not include options.

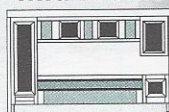
Model number does not necessarily reflect the overall length of a particular unit.

WILDWOOD™ FIFTH WHEEL OPTIONS

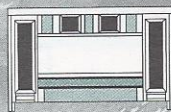


Standard mid-profile

Mid-Profile



Option 1



Option 2

Hi-Profile



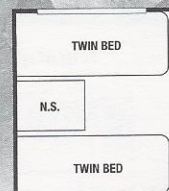
Standard high profile



Option 1



Option 2



Twin Beds
Option A

Features of Quality Living by Wildwood™

STANDARD MODELS

COMFORT

- Four-color coordinated interiors
- Color coordinated drapes & valances
- Color coordinated bedspreads and bunksreads
- 80" interior height (trailer only)
- 44" dinette seats (slide-outs only)
- Bedroom roof vent
- Dometic® 13,500 BTU central air conditioner with Quick Cool feature
- In-floor ducted heat
- 30" radius primary entrance door 26" secondary
- 84" Interior height (38' Park trailers and all Fifth wheels)
- 30 oz. carpet with padding
- Toe Kicks Kitchen base cabinets

CONVENIENCE

- Solid oak framed cabinet doors
- Built in medicine cabinet and mirror in bath
- Jalousie Windows
- Mini Blinds Throughout
- Systems monitor panel
- Power range hood with light
- Magic Chef® three burner high output range with oven
- Large Dometic® double door refrigerator
- Microwave with carousel
- TV antenna with booster
- Satellite Prep
- Cable hook-up
- Lift-up beds with gas struts (per floor plan)
- Acrylic kitchen sink
- 30 lb. double LP tanks with auto changeover
- LP tank cover (on trailers)
- Six-gallon gas re-igniter water heater
- Rear bumper with sewer hose carrier
- Hitch light
- Step light with interior switch
- Sink cover
- TV shelf and outlet in bedroom
- Surround sound TV hook-up
- Vented side windows in slide-outs
- Oak knife holder
- Positive cabinet door latches
- Laminated self-edged counter tops
- High impact laminate TV shelves and night stands

- Towel ring and brass finished toilet paper holder
- Large overhead TV cabinets (where applicable)
- Porch light with interior switch
- Rolled side metal on all slide models
- Extra-large picture window at dinette (slides only)
- Pots and pans drawer under dinette
- Triple step w/9" riser (slides only)

CONSTRUCTION

- A & E 8500 side awning
- 5/8" Plywood tongue and groove floor decking
- 5" truss roof rafters
- 3/8" walk on roof decking (entire roof)
- 2" x 3" floor joists 12" on center
- R-7 insulation throughout (floors, walls and ceilings)
- Galvanized steel wheelwells with fiberglass insulation (except slide-outs)
- Radial tires
- Flush clamp-ring windows with radius corners
- Hardwood drawer fronts with pine sides
- 1/2" plywood hinged dinette seats
- Plywood constructed dinette and bed bases (2" x 2")
- 2" x 2" wall studs maximum 16" on center

SECURITY & SAFETY

- Smoke detector
- Fire extinguisher
- LP leak detector
- Flush door latch with integral dead bolt lock
- Screen door with safety latch
- Electric brakes all wheels
- Safety chains (trailer only)

MAINTENANCE

- Awning drip rail w/downspouts
- ABS tub with one-piece surround
- Water heater by-pass
- Baked on enamel graphics side stripe
- TPO vinyl roof (12-year warranty)

- One piece rock guard awning (on models with front windows)
- Fiberglass entrance and baggage doors

FOREST RIVER ADVANTAGE

- **Lighted main entry step**
- **Mattress upgrade**
- **CD/cassette stereo system w/remote control**
- **Fantastic fan in bath**
- **Water filter system**
- **Overhead cabinets in slide**
- **6+2 Forest River sound system with 100 watt subwoofer for true surround sound**
- **Decor light dinette (slide-outs only)**

POPULAR OPTIONS

- Skylight over tub
- Bifold shower door
- Bedroom wardrobe options
- Sofa hide-a-bed (slide-outs only)
- Stabilizer jacks
- Patio door with vertical blinds (per floor plan)
- Power Jacks
- Outside shower
- Range cover
- Roof rack and ladder
- 15K ducted air conditioning (IPO 13.5K air)
- Bar stools (per floor plan)
- Twin beds (per floor plan)
- Storage behind Hide-a-Bed
- Solid oak raised panel doors
- Solid oak facing around slide-room
- Extra large double door refrigerator
- Free standing dinette w/4 chairs
- Awning center support
- Spare tire, carrier and cover
- Second drawer under dinette
- Exterior grill
- Ceiling paddle fan (TT 38RLDS, 38FKDS, 38SLDS & all FW)



travel in style, anywhere, anytime...

Colton RV & Marine
3122 Niagara Falls Blvd
North Tonawanda, NY 14120
(716) 694-0188
www.ColtonRV.com

Colton RV & Marine
3443 Southwestern Blvd.
Orchard Park, NY 14127
(716) 957-3250
www.Coltonrv.com



Looking for style and function?
This layout offers an L-shaped kitchen
counter, and a slide-out dinette to
accommodate your every need.
24RLS shown right in Sage decor.