

# SOLAIRE

BY PALOMINO



SINCE 1968  
**PALOMINO**  
*Recreational Vehicles*  
a Division of Forest River





# SOLAIRE

BY PALOMINO



SINCE 1968  
**PALOMINO**  
*Recreational Vehicles*  
a Division of Forest River







Solaire ultra light hybrid travel trailers are equipped for fun. Built with easy tow ability in mind, it includes an all aluminum superstructure and aerodynamic design.

Solaire ultra light travel trailers are swift and easy to tow, yet built to last with a sturdy aluminum framed superstructure for long lasting durability.



**SOLAIRE**  
GT3

Solaire ultra light travel trailers equipped with the GT3 package are designed with luxury in mind. The aluminum structure allows for easy towing and handling.





Solaire ultra light hybrid travel trailers are equipped for fun. Built with easy tow ability in mind, it includes an all aluminum superstructure and aerodynamic design.

Solaire ultra light travel trailers are swift and easy to tow, yet built to last with a sturdy aluminum framed superstructure for long lasting durability.



**SOLAIRE**  
GT3

Solaire ultra light travel trailers equipped with the GT3 package are designed with luxury in mind. The aluminum structure allows for easy towing and handling.





Slam Latch Baggage Doors



Power Front Jack



Awning Slide Topper



Kitchen Skylight With Shade To Let Natural Light In



Glass Range



LED Lit Awning



Detail

LINE-X® Protective Coatings



## Protective Coatings Built to Go the Distance

### LINE-X Benefits:

- Protect your investment with reduced maintenance and repair costs
- Abrasion, impact, and scratch resistance for protection against rock or debris chips
- Rust, corrosion, and chemical protection
- Fade resistance with LINE-X ULTRA UV stable color formula





Slam Latch Baggage Doors



Power Front Jack



Awning Slide Topper



Kitchen Skylight With Shade To Let Natural Light In



Glass Range



LED Lit Awning



Detail

LINE-X® Protective Coatings



## Protective Coatings Built to Go the Distance

### LINE-X Benefits:

- Protect your investment with reduced maintenance and repair costs
- Abrasion, impact, and scratch resistance for protection against rock or debris chips
- Rust, corrosion, and chemical protection
- Fade resistance with LINE-X ULTRA UV stable color formula





Three available interior color decor options. Shown in picture with fabric furniture option in place of leather.

Teakwood decor with fabric furniture option



SANDSTONE



TEAKWOOD



TRUFFLE



FURNITURE FABRIC OPTION





Three available interior color decor options. Shown in picture with fabric furniture option in place of leather.

Teakwood decor with fabric furniture option



SANDSTONE



TEAKWOOD



TRUFFLE



FURNITURE FABRIC OPTION



# Hybrid Expandable. Best in Value.

Hybrid expandable bed ends and slide outs create a comfortable and spacious interior design for that residential feel. They include many popular features to deliver the very best value to the market.



147 X

HITCH DRY WEIGHT	315	EXTERIOR WIDTH	8'
DRY AXLE WEIGHT	2908	TRAVEL LENGTH	18'6"
TOTAL DRY WEIGHT	3223	FRESH WATER CAPACITY	40
GVWR	3815	GRAY WATER CAPACITY	30
UNLOADED VEHICLE WEIGHT	3223	BLACK WATER CAPACITY	30
INTERIOR HEIGHT	6'8"	CARGO CARRYING CAPACITY	746
EXTERIOR HEIGHT	10'1"		



163 X

HITCH DRY WEIGHT	400	EXTERIOR WIDTH	8'
DRY AXLE WEIGHT	3169	TRAVEL LENGTH	20'2"
TOTAL DRY WEIGHT	3569	FRESH WATER CAPACITY	40
GVWR	4996	GRAY WATER CAPACITY	30
UNLOADED VEHICLE WEIGHT	3603	BLACK WATER CAPACITY	30
INTERIOR HEIGHT	6'8"	CARGO CARRYING CAPACITY	1393
EXTERIOR HEIGHT	10'1"		



190 X show in Teakwood decor



190 X

HITCH DRY WEIGHT	620	EXTERIOR WIDTH	8'
DRY AXLE WEIGHT	3990	TRAVEL LENGTH	22'10"
TOTAL DRY WEIGHT	4610	FRESH WATER CAPACITY	40
GVWR	5996	GRAY WATER CAPACITY	30
UNLOADED VEHICLE WEIGHT	4644	BLACK WATER CAPACITY	30
INTERIOR HEIGHT	6'8"	CARGO CARRYING CAPACITY	1352
EXTERIOR HEIGHT	11'1"		



213 X

HITCH DRY WEIGHT	532	EXTERIOR WIDTH	8'
DRY AXLE WEIGHT	3782	TRAVEL LENGTH	25'2"
TOTAL DRY WEIGHT	4316	FRESH WATER CAPACITY	40
GVWR	5996	GRAY WATER CAPACITY	30
UNLOADED VEHICLE WEIGHT	43487	BLACK WATER CAPACITY	30
INTERIOR HEIGHT	6'8"	CARGO CARRYING CAPACITY	1648
EXTERIOR HEIGHT	10'1"		



# Hybrid Expandable. Best in Value.

Hybrid expandable bed ends and slide outs create a comfortable and spacious interior design for that residential feel. They include many popular features to deliver the very best value to the market.



147 X

HITCH DRY WEIGHT	315	EXTERIOR WIDTH	8'
DRY AXLE WEIGHT	2908	TRAVEL LENGTH	18'6"
TOTAL DRY WEIGHT	3223	FRESH WATER CAPACITY	40
GVWR	3815	GRAY WATER CAPACITY	30
UNLOADED VEHICLE WEIGHT	3223	BLACK WATER CAPACITY	30
INTERIOR HEIGHT	6'8"	CARGO CARRYING CAPACITY	746
EXTERIOR HEIGHT	10'1"		



163 X

HITCH DRY WEIGHT	400	EXTERIOR WIDTH	8'
DRY AXLE WEIGHT	3169	TRAVEL LENGTH	20'2"
TOTAL DRY WEIGHT	3569	FRESH WATER CAPACITY	40
GVWR	4996	GRAY WATER CAPACITY	30
UNLOADED VEHICLE WEIGHT	3603	BLACK WATER CAPACITY	30
INTERIOR HEIGHT	6'8"	CARGO CARRYING CAPACITY	1393
EXTERIOR HEIGHT	10'1"		



190 X show in Teakwood decor



190 X

HITCH DRY WEIGHT	620	EXTERIOR WIDTH	8'
DRY AXLE WEIGHT	3990	TRAVEL LENGTH	22'10"
TOTAL DRY WEIGHT	4610	FRESH WATER CAPACITY	40
GVWR	5996	GRAY WATER CAPACITY	30
UNLOADED VEHICLE WEIGHT	4644	BLACK WATER CAPACITY	30
INTERIOR HEIGHT	6'8"	CARGO CARRYING CAPACITY	1352
EXTERIOR HEIGHT	11'1"		



213 X

HITCH DRY WEIGHT	532	EXTERIOR WIDTH	8'
DRY AXLE WEIGHT	3782	TRAVEL LENGTH	25'2"
TOTAL DRY WEIGHT	4316	FRESH WATER CAPACITY	40
GVWR	5996	GRAY WATER CAPACITY	30
UNLOADED VEHICLE WEIGHT	43487	BLACK WATER CAPACITY	30
INTERIOR HEIGHT	6'8"	CARGO CARRYING CAPACITY	1648
EXTERIOR HEIGHT	10'1"		



# SOLLAIRE

BY PALOMINO

GT3



OPTIONAL  
GT3 PACKAGE



## Standards

- Power Awning w/LED Lights
- Dexter Tor-Flex Torsion Axles
- Furrion HDMI DVD/Bluetooth/HDMI Stereo
- Power Tongue Jack
- 13,500 BTU Ducted A/C
- Tub Surround w/Skylight
- Gel Coated Front Cap
- Ball Bearing Drawer Guides
- Microwave
- Slam Latch Baggage Doors w/Magnets
- Black Tank Flush
- Crispy White Gel Coat Fiberglass
- LED Interior Lights
- 8 Cu Ft Refrigerator (N/A On 147)

## GT3 Package

### Standards

Optional GT3 Package Includes All The Features From The Ultra Plus The Following:

- Roller Night Shades
- 9" Denver 60 X 80 Mattress
- Line X Cap
- Bedspread / Pillow Combo
- Solid Surface Counter Tops Throughout
- Stainless Steel Appliance Package
- Aluminum Wheels
- Bonded Frameless Windows
- Raised Refrigerator Panel
- Power Stabilizer Jacks
- Heated Holding Tanks

**NOT AVAILABLE GT3 PACKAGE**  
**201 SS, 202 RB, 211 BH**



# SOLLAIRE

BY PALOMINO



OPTIONAL  
GT3 PACKAGE

GT3



## Standards

- Power Awning w/LED Lights
- Dexter Tor-Flex Torsion Axles
- Furrion HDMI DVD/Bluetooth/HDMI Stereo
- Power Tongue Jack
- 13,500 BTU Ducted A/C
- Tub Surround w/Skylight
- Gel Coated Front Cap
- Ball Bearing Drawer Guides
- Microwave
- Slam Latch Baggage Doors w/ Magnets
- Black Tank Flush
- Crispy White Gel Coat Fiberglass
- LED Interior Lights
- 8 Cu Ft Refrigerator (N/A On 147)

## GT3 Package

### Standards

Optional GT3 Package Includes All The Features From The Ultra Plus The Following:

- Roller Night Shades
- 9" Denver 60 X 80 Mattress
- Line X Cap
- Bedspread / Pillow Combo
- Solid Surface Counter Tops Throughout
- Stainless Steel Appliance Package
- Aluminum Wheels
- Bonded Frameless Windows
- Raised Refrigerator Panel
- Power Stabilizer Jacks
- Heated Holding Tanks

**NOT AVAILABLE GT3 PACKAGE**  
**201 SS, 202 RB, 211 BH**



# SOLAIRE by PALOMINO



251 RBSS Shown



280 RLSS

HITCH DRY WEIGHT	817	EXTERIOR WIDTH	8"
DRY AXLE WEIGHT	5545	TRAVEL LENGTH	31'8"
TOTAL DRY WEIGHT	6362	OPEN LENGTH	NA
GVWR	7817	FRESH WATER CAPACITY	50
UNLOADED VEHICLE WEIGHT	6400	GRAY WATER CAPACITY	38
INTERIOR HEIGHT	6'8"	BLACK WATER CAPACITY	38
EXTERIOR HEIGHT W/AC	11'1"	CARGO CARRYING CAPACITY	1417



304 RKDS

HITCH DRY WEIGHT	920	EXTERIOR WIDTH	8"
DRY AXLE WEIGHT	6333	TRAVEL LENGTH	35'6"
TOTAL DRY WEIGHT	7253	OPEN LENGTH	NA
GVWR	8920	FRESH WATER CAPACITY	50
UNLOADED VEHICLE WEIGHT	7291	GRAY WATER CAPACITY	76
INTERIOR HEIGHT	6'8"	BLACK WATER CAPACITY	38
EXTERIOR HEIGHT W/AC	11'1"	CARGO CARRYING CAPACITY	1629



316 RLTS

HITCH DRY WEIGHT	929	EXTERIOR WIDTH	8"
DRY AXLE WEIGHT	7239	TRAVEL LENGTH	35'6"
TOTAL DRY WEIGHT	8168	OPEN LENGTH	NA
GVWR	11089	FRESH WATER CAPACITY	50
UNLOADED VEHICLE WEIGHT	8206	GRAY WATER CAPACITY	76
INTERIOR HEIGHT	6'8"	BLACK WATER CAPACITY	38
EXTERIOR HEIGHT W/AC	11'1"	CARGO CARRYING CAPACITY	2883



220 DSFB

HITCH DRY WEIGHT	760	EXTERIOR WIDTH	8"
DRY AXLE WEIGHT	4640	TRAVEL LENGTH	25'6"
TOTAL DRY WEIGHT	5400	OPEN LENGTH	NA
GVWR	7760	FRESH WATER CAPACITY	50
UNLOADED VEHICLE WEIGHT	5434	GRAY WATER CAPACITY	68
INTERIOR HEIGHT	6'8"	BLACK WATER CAPACITY	30
EXTERIOR HEIGHT W/AC	11'1"	CARGO CARRYING CAPACITY	2326



251 RBSS

HITCH DRY WEIGHT	520	EXTERIOR WIDTH	8"
DRY AXLE WEIGHT	4930	TRAVEL LENGTH	29'3"
TOTAL DRY WEIGHT	5450	OPEN LENGTH	NA
GVWR	7520	FRESH WATER CAPACITY	50
UNLOADED VEHICLE WEIGHT	5484	GRAY WATER CAPACITY	76
INTERIOR HEIGHT	6'8"	BLACK WATER CAPACITY	38
EXTERIOR HEIGHT W/AC	11'1"	CARGO CARRYING CAPACITY	2036



201 SS

HITCH DRY WEIGHT	588	EXTERIOR WIDTH	8"
DRY AXLE WEIGHT	3427	TRAVEL LENGTH	23'4"
TOTAL DRY WEIGHT	4015	OPEN LENGTH	NA
GVWR	5196	FRESH WATER CAPACITY	50
UNLOADED VEHICLE WEIGHT	4049	GRAY WATER CAPACITY	30
INTERIOR HEIGHT	6'8"	BLACK WATER CAPACITY	30
EXTERIOR HEIGHT W/AC	10'1"	CARGO CARRYING CAPACITY	1147



202 RB

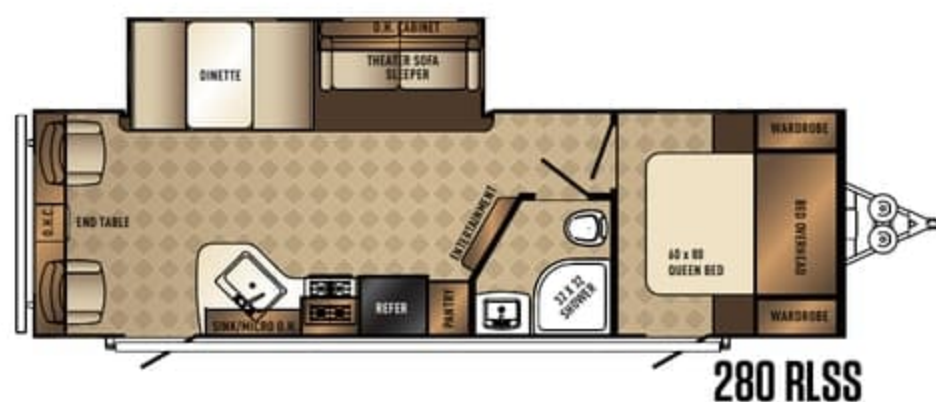
HITCH DRY WEIGHT	536	EXTERIOR WIDTH	8"
DRY AXLE WEIGHT	3239	TRAVEL LENGTH	23'5"
TOTAL DRY WEIGHT	3775	OPEN LENGTH	NA
GVWR	5125	FRESH WATER CAPACITY	50
UNLOADED VEHICLE WEIGHT	3813	GRAY WATER CAPACITY	38
INTERIOR HEIGHT	6'8"	BLACK WATER CAPACITY	38
EXTERIOR HEIGHT W/AC	10'1"	CARGO CARRYING CAPACITY	1312



# SOLAIRE by PALOMINO

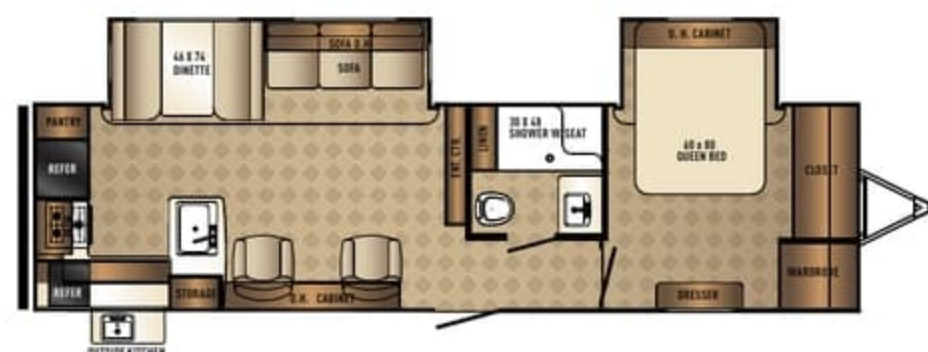


251 RBSS Shown



280 RLSS

HITCH DRY WEIGHT	817	EXTERIOR WIDTH	8"
DRY AXLE WEIGHT	5545	TRAVEL LENGTH	31'8"
TOTAL DRY WEIGHT	6362	OPEN LENGTH	NA
GVWR	7817	FRESH WATER CAPACITY	50
UNLOADED VEHICLE WEIGHT	6400	GRAY WATER CAPACITY	38
INTERIOR HEIGHT	6'8"	BLACK WATER CAPACITY	38
EXTERIOR HEIGHT W/AC	11'1"	CARGO CARRYING CAPACITY	1417



304 RKDS

HITCH DRY WEIGHT	920	EXTERIOR WIDTH	8"
DRY AXLE WEIGHT	6333	TRAVEL LENGTH	35'6"
TOTAL DRY WEIGHT	7253	OPEN LENGTH	NA
GVWR	8920	FRESH WATER CAPACITY	50
UNLOADED VEHICLE WEIGHT	7291	GRAY WATER CAPACITY	76
INTERIOR HEIGHT	6'8"	BLACK WATER CAPACITY	38
EXTERIOR HEIGHT W/AC	11'1"	CARGO CARRYING CAPACITY	1629



316 RLTS

HITCH DRY WEIGHT	929	EXTERIOR WIDTH	8"
DRY AXLE WEIGHT	7239	TRAVEL LENGTH	35'6"
TOTAL DRY WEIGHT	8168	OPEN LENGTH	NA
GVWR	11089	FRESH WATER CAPACITY	50
UNLOADED VEHICLE WEIGHT	8206	GRAY WATER CAPACITY	76
INTERIOR HEIGHT	6'8"	BLACK WATER CAPACITY	38
EXTERIOR HEIGHT W/AC	11'1"	CARGO CARRYING CAPACITY	2883



220 DSFB

HITCH DRY WEIGHT	760	EXTERIOR WIDTH	8"
DRY AXLE WEIGHT	4640	TRAVEL LENGTH	25'6"
TOTAL DRY WEIGHT	5400	OPEN LENGTH	NA
GVWR	7760	FRESH WATER CAPACITY	50
UNLOADED VEHICLE WEIGHT	5434	GRAY WATER CAPACITY	68
INTERIOR HEIGHT	6'8"	BLACK WATER CAPACITY	30
EXTERIOR HEIGHT W/AC	11'1"	CARGO CARRYING CAPACITY	2326



251 RBSS

HITCH DRY WEIGHT	520	EXTERIOR WIDTH	8"
DRY AXLE WEIGHT	4930	TRAVEL LENGTH	29'3"
TOTAL DRY WEIGHT	5450	OPEN LENGTH	NA
GVWR	7520	FRESH WATER CAPACITY	50
UNLOADED VEHICLE WEIGHT	5484	GRAY WATER CAPACITY	76
INTERIOR HEIGHT	6'8"	BLACK WATER CAPACITY	38
EXTERIOR HEIGHT W/AC	11'1"	CARGO CARRYING CAPACITY	2036



201 SS

HITCH DRY WEIGHT	588	EXTERIOR WIDTH	8"
DRY AXLE WEIGHT	3427	TRAVEL LENGTH	23'4"
TOTAL DRY WEIGHT	4015	OPEN LENGTH	NA
GVWR	5196	FRESH WATER CAPACITY	50
UNLOADED VEHICLE WEIGHT	4049	GRAY WATER CAPACITY	30
INTERIOR HEIGHT	6'8"	BLACK WATER CAPACITY	30
EXTERIOR HEIGHT W/AC	10'1"	CARGO CARRYING CAPACITY	1147



202 RB

HITCH DRY WEIGHT	536	EXTERIOR WIDTH	8"
DRY AXLE WEIGHT	3239	TRAVEL LENGTH	23'5"
TOTAL DRY WEIGHT	3775	OPEN LENGTH	NA
GVWR	5125	FRESH WATER CAPACITY	50
UNLOADED VEHICLE WEIGHT	3813	GRAY WATER CAPACITY	38
INTERIOR HEIGHT	6'8"	BLACK WATER CAPACITY	38
EXTERIOR HEIGHT W/AC	10'1"	CARGO CARRYING CAPACITY	1312





Entertainment Center  
Fireplace



Fabric Furniture Option



Large Outside Camp Kitchen



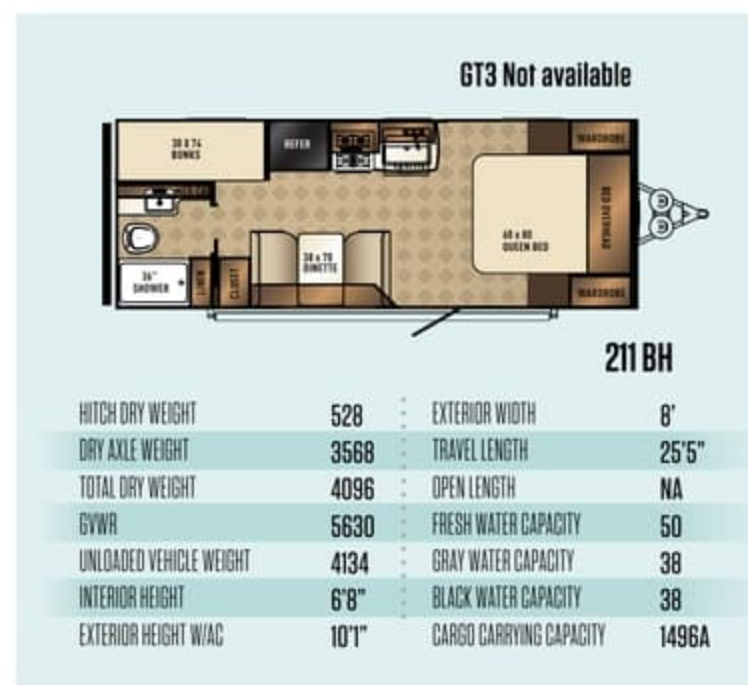
Small Outside Camp Kitchen



King Bed (Available on 304 & 316 only)



Roller Shades







Entertainment Center  
Fireplace



Fabric Furniture Option



Large Outside Camp Kitchen



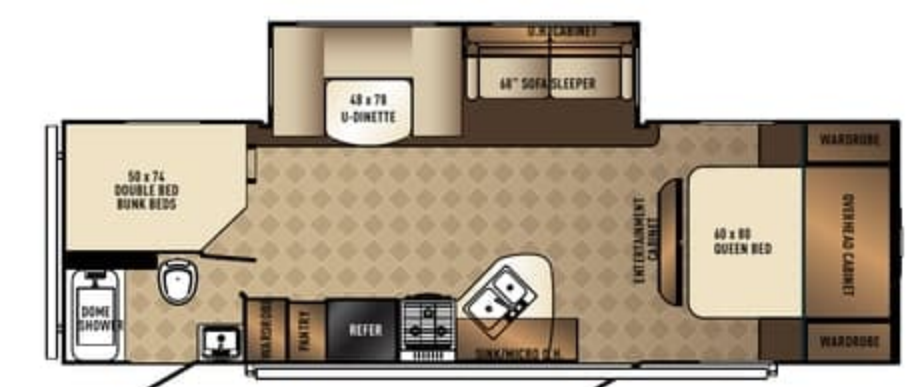
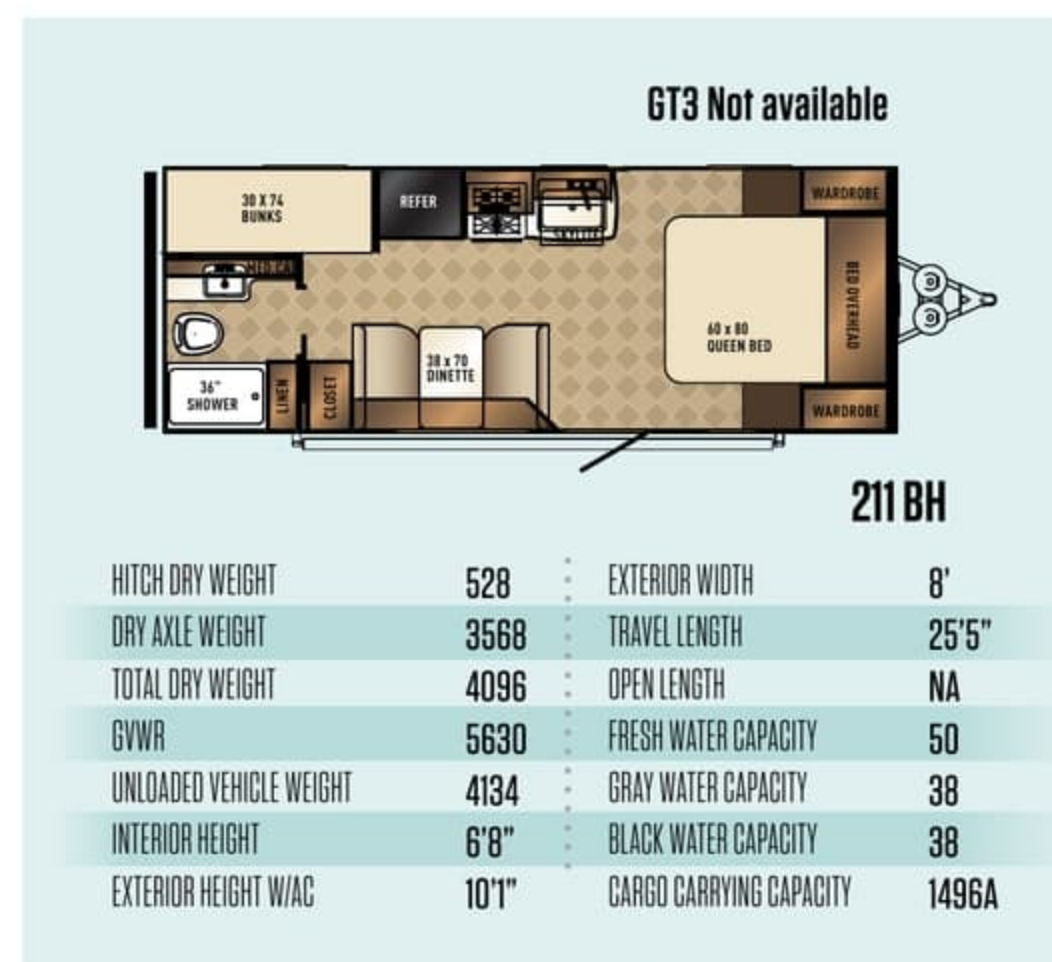
Small Outside Camp Kitchen



King Bed (Available on 304 & 316 only)



Roller Shades



**267 BHSK**

HITCH DRY WEIGHT	759	EXTERIOR WIDTH	8'
DRY AXLE WEIGHT	4855	TRAVEL LENGTH	30'11"
TOTAL DRY WEIGHT	5614	OPEN LENGTH	NA
GVWR	7759	FRESH WATER CAPACITY	50
UNLOADED VEHICLE WEIGHT	5648	GRAY WATER CAPACITY	76
INTERIOR HEIGHT	6'8"	BLACK WATER CAPACITY	38
EXTERIOR HEIGHT W/AC	11'1"	CARGO CARRYING CAPACITY	2111



**269 BHDSK**

HITCH DRY WEIGHT	990	EXTERIOR WIDTH	8'
DRY AXLE WEIGHT	5330	TRAVEL LENGTH	32'3"
TOTAL DRY WEIGHT	6320	OPEN LENGTH	NA
GVWR	8990	FRESH WATER CAPACITY	50
UNLOADED VEHICLE WEIGHT	6354	GRAY WATER CAPACITY	76
INTERIOR HEIGHT	6'8"	BLACK WATER CAPACITY	38
EXTERIOR HEIGHT W/AC	11'1"	CARGO CARRYING CAPACITY	2636



**240 BHS**

HITCH DRY WEIGHT	566	EXTERIOR WIDTH	8'
DRY AXLE WEIGHT	4606	TRAVEL LENGTH	27'10"
TOTAL DRY WEIGHT	5172	OPEN LENGTH	NA
GVWR	6710	FRESH WATER CAPACITY	50
UNLOADED VEHICLE WEIGHT	5210	GRAY WATER CAPACITY	38
INTERIOR HEIGHT	6'8"	BLACK WATER CAPACITY	38
EXTERIOR HEIGHT W/AC	11'1"	CARGO CARRYING CAPACITY	1500





**292 QBSK**

HITCH DRY WEIGHT	885	EXTERIOR WIDTH	8'
DRY AXLE WEIGHT	4970	TRAVEL LENGTH	33'4"
TOTAL DRY WEIGHT	5855	OPEN LENGTH	NA
GVWR	7885	FRESH WATER CAPACITY	50
UNLOADED VEHICLE WEIGHT	5889	GRAY WATER CAPACITY	38
INTERIOR HEIGHT	6'8"	BLACK WATER CAPACITY	38
EXTERIOR HEIGHT W/AC	11'1"	CARGO CARRYING CAPACITY	1996



**312 TSQBK**

HITCH DRY WEIGHT	805	EXTERIOR WIDTH	8'
DRY AXLE WEIGHT	7055	TRAVEL LENGTH	35'1"
TOTAL DRY WEIGHT	7860	OPEN LENGTH	NA
GVWR	8805	FRESH WATER CAPACITY	50
UNLOADED VEHICLE WEIGHT	7894	GRAY WATER CAPACITY	114
INTERIOR HEIGHT	6'8"	BLACK WATER CAPACITY	38
EXTERIOR HEIGHT W/AC	11'1"	CARGO CARRYING CAPACITY	911



**317 BHSK**

HITCH DRY WEIGHT	625	EXTERIOR WIDTH	8'
DRY AXLE WEIGHT	6445	TRAVEL LENGTH	35'1"
TOTAL DRY WEIGHT	7070	OPEN LENGTH	NA
GVWR	8625	FRESH WATER CAPACITY	50
UNLOADED VEHICLE WEIGHT	7104	GRAY WATER CAPACITY	38
INTERIOR HEIGHT	6'8"	BLACK WATER CAPACITY	38
EXTERIOR HEIGHT W/AC	11'1"	CARGO CARRYING CAPACITY	1521



**312 TSQBK / 317 BHSK Rear Bunk Beds**



**267 BHSK shown with GT3 package and sandstone decor**





**292 QBSK**

HITCH DRY WEIGHT	885	EXTERIOR WIDTH	8'
DRY AXLE WEIGHT	4970	TRAVEL LENGTH	33'4"
TOTAL DRY WEIGHT	5855	OPEN LENGTH	NA
GVWR	7885	FRESH WATER CAPACITY	50
UNLOADED VEHICLE WEIGHT	5889	GRAY WATER CAPACITY	38
INTERIOR HEIGHT	6'8"	BLACK WATER CAPACITY	38
EXTERIOR HEIGHT W/AC	11'1"	CARGO CARRYING CAPACITY	1996



**312 TSQBK**

HITCH DRY WEIGHT	805	EXTERIOR WIDTH	8'
DRY AXLE WEIGHT	7055	TRAVEL LENGTH	35'1"
TOTAL DRY WEIGHT	7860	OPEN LENGTH	NA
GVWR	8805	FRESH WATER CAPACITY	50
UNLOADED VEHICLE WEIGHT	7894	GRAY WATER CAPACITY	114
INTERIOR HEIGHT	6'8"	BLACK WATER CAPACITY	38
EXTERIOR HEIGHT W/AC	11'1"	CARGO CARRYING CAPACITY	911



**317 BHSK**

HITCH DRY WEIGHT	625	EXTERIOR WIDTH	8'
DRY AXLE WEIGHT	6445	TRAVEL LENGTH	35'1"
TOTAL DRY WEIGHT	7070	OPEN LENGTH	NA
GVWR	8625	FRESH WATER CAPACITY	50
UNLOADED VEHICLE WEIGHT	7104	GRAY WATER CAPACITY	38
INTERIOR HEIGHT	6'8"	BLACK WATER CAPACITY	38
EXTERIOR HEIGHT W/AC	11'1"	CARGO CARRYING CAPACITY	1521



**312 TSQBK / 317 BHSK Rear Bunk Beds**



**267 BHSK shown with GT3 package and sandstone decor**





## SOLAIRE SUPERIOR CONSTRUCTION

- A. Alpha Super Flex Membrane
- B. Luan Substrate
- C. Luan Substrate
- D. High density block foam insulation
- E. High density block foam insulation
- F. Luan substrate
- G. Fiberglass front cap w/ LED lights and Line X® Rock Guard
- H. Residential Style Carpeting
- I. Wood-look laminate floor
- J. Fully welded aluminum super structure
- K. High density block foam insulation
- L. Luan substrate - top
- M. Luan substrate - bottom
- N. Under floor holding tanks
- O. Dexter - Tor Flex Torsion Axle





## SOLAIRE SUPERIOR CONSTRUCTION

- A. Alpha Super Flex Membrane
- B. Luan Substrate
- C. Luan Substrate
- D. High density block foam insulation
- E. High density block foam insulation
- F. Luan substrate
- G. Fiberglass front cap w/ LED lights and Line X® Rock Guard
- H. Residential Style Carpeting
- I. Wood-look laminate floor
- J. Fully welded aluminum super structure
- K. High density block foam insulation
- L. Luan substrate - top
- M. Luan substrate - bottom
- N. Under floor holding tanks
- O. Dexter - Tor Flex Torsion Axle



## AVAILABLE OPTIONS

### SOLAIRE EXPANDABLES -

- Air conditioner upgrade - 15,000 BTU
- 24" LED TV
- Create A Breeze Fan
- Heated Holding Tanks
- RVQ Bumper Mount Grill
- Tri-Fold Hide A Bed
- Off Road Package (147 X Only) (includes 15" wheels, Off Road tires, and lift kit)

### SOLAIRE ULTRA LITE -

- Air conditioner upgrade - 15,000 BTU
- TV (size varies per floorplan)
- 30 lb. LP tanks
- 9" Denver mattress
- Counter top extension
- Create a breeze fan
- Fireplace (N/A on the 201/202/211)
- Free standing table & chairs
- King bed option  
(available on 304 / 316 only)
- Power stabilizer jacks
- RVQ bumper mount grill
- Raised refrigerator panel
- Residential refrigerator - 11 cu ft.
- Roller night shades
- Roof ladder (n/a on 267/269/316)
- Slide topper awnings
- Stainless steel appliances
- 68" theater seating
- Tri-fold sofa upgrade
- 50 amp service

## SOLAIRE

# DARE TO COMPARE CHALLENGE

	SOLAIRE	BRAND X
<b>CONSTRUCTION:</b>		
Aluminum cage laminated construction	✓	
Vacuum bonded lamination: Roof, floor, sidewalls, rear wall, slide out box	✓	
Barreled walk on roof – block foam insulation for the most rigid construction available	✓	
Rack and pinion thru-frame flush floor slide out with manual override	✓	
<b>EXTERIOR:</b>		
Fully enclosed underbelly	✓	
Gel coated high gloss white exterior	✓	
Slam latch exterior baggage doors with magnetic door catches	✓	
Dexter TORFLEX Torsion axles – independent suspension, rubber cushioning eliminates metal-to-metal contact	✓	
TV bracket and speakers	✓	
Power awning with LED patio lights	✓	
Powder coated exterior kitchen tops and base – designed for the exterior elements	✓	
Alpha Superflex roofing	✓	
<b>INTERIOR:</b>		
8 cubic foot Dometic refrigerator	✓	
Glass top flush mount range cover	✓	
LED interior lights	✓	
Solid surface countertops	✓	
46" Mega booth standard in non-island kitchen models	✓	
Skylight in every kitchen and includes a night shade	✓	
Raised panel cabinet doors	✓	
Porcelain foot flush Dometic Toilet	✓	
USB charging station	✓	



## AVAILABLE OPTIONS

### SOLAIRE EXPANDABLES -

- Air conditioner upgrade - 15,000 BTU
- 24" LED TV
- Create A Breeze Fan
- Heated Holding Tanks
- RVQ Bumper Mount Grill
- Tri-Fold Hide A Bed
- Off Road Package (147 X Only) (includes 15" wheels, Off Road tires, and lift kit)

### SOLAIRE ULTRA LITE -

- Air conditioner upgrade - 15,000 BTU
- TV (size varies per floorplan)
- 30 lb. LP tanks
- 9" Denver mattress
- Counter top extension
- Create a breeze fan
- Fireplace (N/A on the 201/202/211)
- Free standing table & chairs
- King bed option  
(available on 304 / 316 only)
- Power stabilizer jacks
- RVQ bumper mount grill
- Raised refrigerator panel
- Residential refrigerator - 11 cu ft.
- Roller night shades
- Roof ladder (n/a on 267/269/316)
- Slide topper awnings
- Stainless steel appliances
- 68" theater seating
- Tri-fold sofa upgrade
- 50 amp service

## SOLAIRE

# DARE TO COMPARE CHALLENGE

	SOLAIRE	BRAND X
<b>CONSTRUCTION:</b>		
Aluminum cage laminated construction	✓	
Vacuum bonded lamination: Roof, floor, sidewalls, rear wall, slide out box	✓	
Barreled walk on roof – block foam insulation for the most rigid construction available	✓	
Rack and pinion thru-frame flush floor slide out with manual override	✓	
<b>EXTERIOR:</b>		
Fully enclosed underbelly	✓	
Gel coated high gloss white exterior	✓	
Slam latch exterior baggage doors with magnetic door catches	✓	
Dexter TORFLEX Torsion axles – independent suspension, rubber cushioning eliminates metal-to-metal contact	✓	
TV bracket and speakers	✓	
Power awning with LED patio lights	✓	
Powder coated exterior kitchen tops and base – designed for the exterior elements	✓	
Alpha Superflex roofing	✓	
<b>INTERIOR:</b>		
8 cubic foot Dometic refrigerator	✓	
Glass top flush mount range cover	✓	
LED interior lights	✓	
Solid surface countertops	✓	
46" Mega booth standard in non-island kitchen models	✓	
Skylight in every kitchen and includes a night shade	✓	
Raised panel cabinet doors	✓	
Porcelain foot flush Dometic Toilet	✓	
USB charging station	✓	





#### PRE-DELIVERY INSPECTION FACILITY

20,000 square feet of quality assurance. The bare essentials for a premium product. This state-of-the-art facility gives immediate daily feedback to production for quality assurance in every unit built.



[www.ForestRiverBuyLocal.com](http://www.ForestRiverBuyLocal.com)

#### 24/7 EMERGENCY ROADSIDE ASSISTANCE

For a worry-free ownership experience

Forest River includes one

year of Coach-Net RV Technical & Roadside Assistance with each RV purchase. Whether new to the RV lifestyle or an experienced RV enthusiast, Forest River owners have 24/7 access to technical, operational and emergency road service coverage throughout the US & Canada.

Coach-Net's fast, dependable service is just a phone call away.

### Coach-Net®

RV Technical & Roadside Assistance

#### Specification Definitions

**GVWR (Gross Vehicle Weight Rating)** - is the maximum permissible weight of the unit when fully loaded. It includes all weights, inclusive of all fluids, cargo, optional equipment and accessories. For safety and product performance do NOT exceed the GVWR.

**GAWR (Gross Axle Weight Rating)** - is the maximum permissible weight, including cargo, fluids, optional equipment and accessories that can be safely supported by a combination of all axles.

**UVW (Unloaded Vehicle Weight)\*** - is the typical weight of the unit as manufactured at the factory. It includes all weight at the unit's axle(s) and tongue or pin and LP Gas. The UVW does not include cargo, fresh potable water, additional optional equipment or dealer installed accessories.

\*Estimated average based on standard build optional equipment.

**CCC (Cargo Carrying Capacity)\*\*** - is the amount of weight available for fresh potable water, cargo, additional optional equipment and accessories. CCC is equal to GVWR minus UVW. Available CCC should accommodate fresh potable water (8.3 lbs per gallon). Before filling the fresh water tank, empty the black and gray tanks to provide for more cargo capacity.

\*\* Estimated average based on standard build optional equipment

Each Forest River RV is weighed at the manufacturing facility prior to shipping. A label identifying the unloaded vehicle weight of the actual unit and the cargo carrying capacity is applied to every Forest River RV prior to leaving our facilities.

The load capacity of your unit is designated by weight, not by volume, so you cannot necessarily use all available space when loading your unit.

## Palomino Warranty

Palomino will stand behind our products 100%. For complete details on our warranty program, please see your Palomino dealer.

- 1 2-year fiberglass warranty
- 2 5-year axle warranty
- 3 12-year Alpha Super Flex roof warranty
- 4 2-3 year warranty on appliances (see manual for details)
- 5 1 year bumper to bumper warranty
- 6 An additional 1 year warranty available



#### Learn More

Scan this barcode using a QR Reader on your smart phone to learn more about Forest River.



A Berkshire Hathaway company.

YOUR SOLAIRE DEALER



#### SHINE BAY APPROVED

Each of units goes through a lengthy 30 point inspection process to guarantee complete satisfaction upon arrival to the dealer. We take the time to check everything from seals to electrical shortages.

SINCE 1968

## PALOMINO

*Recreational Vehicles*

a Division of Forest River

1047 EAST M-86 | COLON, MI 49040

P: 269.432.3271 | F: 269.432.2516

[www.palominorv.com](http://www.palominorv.com)

All information contained in this brochure is believed to be accurate at the time of publication. However, during the model year, it may be necessary to make revisions and Forest River, Inc., reserves the right to make all such changes without notice, including prices, colors, materials, equipment and specifications as well as the addition of new models and the discontinuance of models shown in this brochure. Therefore, please consult with your Forest River, Inc., dealer and confirm the existence of any materials, design or specifications that are material to your purchase decision. Litho. U.S.A. FOR 1407 P/W: 2016.12.28





#### PRE-DELIVERY INSPECTION FACILITY

20,000 square feet of quality assurance. The bare essentials for a premium product. This state-of-the-art facility gives immediate daily feedback to production for quality assurance in every unit built.

#### CUSTOMER SATISFACTION



[www.ForestRiverBuyLocal.com](http://www.ForestRiverBuyLocal.com)

#### 24/7 EMERGENCY ROADSIDE ASSISTANCE

For a worry-free ownership experience

Forest River includes one

year of Coach-Net RV Technical & Roadside Assistance with each RV purchase. Whether new to the RV lifestyle or an experienced RV enthusiast, Forest River owners have 24/7 access to technical, operational and emergency road service coverage throughout the US & Canada.

Coach-Net's fast, dependable service is just a phone call away.

# Coach-Net®

RV Technical & Roadside Assistance

#### Specification Definitions

**GVWR (Gross Vehicle Weight Rating)** - is the maximum permissible weight of the unit when fully loaded. It includes all weights, inclusive of all fluids, cargo, optional equipment and accessories. For safety and product performance do NOT exceed the GVWR.

**GAWR (Gross Axle Weight Rating)** - is the maximum permissible weight, including cargo, fluids, optional equipment and accessories that can be safely supported by a combination of all axles.

**UVW (Unloaded Vehicle Weight)\*** - is the typical weight of the unit as manufactured at the factory. It includes all weight at the unit's axle(s) and tongue or pin and LP Gas. The UVW does not include cargo, fresh potable water, additional optional equipment or dealer installed accessories.

\*Estimated average based on standard build optional equipment.

**CCC (Cargo Carrying Capacity)\*\*** - is the amount of weight available for fresh potable water, cargo, additional optional equipment and accessories. CCC is equal to GVWR minus UVW. Available CCC should accommodate fresh potable water (8.3 lbs per gallon). Before filling the fresh water tank, empty the black and gray tanks to provide for more cargo capacity.

\*\* Estimated average based on standard build optional equipment

Each Forest River RV is weighed at the manufacturing facility prior to shipping. A label identifying the unloaded vehicle weight of the actual unit and the cargo carrying capacity is applied to every Forest River RV prior to leaving our facilities.

The load capacity of your unit is designated by weight, not by volume, so you cannot necessarily use all available space when loading your unit.

## Palomino Warranty

Palomino will stand behind our products 100%. For complete details on our warranty program, please see your Palomino dealer.

- 1 2-year fiberglass warranty
- 2 5-year axle warranty
- 3 12-year Alpha Super Flex roof warranty
- 4 2-3 year warranty on appliances (see manual for details)
- 5 1 year bumper to bumper warranty
- 6 An additional 1 year warranty available



Learn More  
Scan this barcode using a QR Reader on your smart phone to learn more about Forest River.



A Berkshire Hathaway company.

SINCE 1968  
**PALOMINO**

*Recreational Vehicles*

a Division of Forest River

1047 EAST M-86 | COLON, MI 49040  
P: 269.432.3271 | F: 269.432.2516

[www.palominorv.com](http://www.palominorv.com)

#### YOUR SOLAIRE DEALER

Colton RV & Marine  
3122 Niagara Falls Blvd  
North Tonawanda, NY 14120  
(716) 694-0188  
[www.ColtonRV.com](http://www.ColtonRV.com)

Colton RV & Marine  
3443 Southwestern Blvd.  
Orchard Park, NY 14127  
(716) 957-3250  
[www.Coltonrv.com](http://www.Coltonrv.com)

All information contained in this brochure is believed to be accurate at the time of publication. However, during the model year, it may be necessary to make revisions and Forest River, Inc., reserves the right to make all such changes without notice, including prices, colors, materials, equipment and specifications as well as the addition of new models and the discontinuance of models shown in this brochure. Therefore, please consult with your Forest River, Inc., dealer and confirm the existence of any materials, design or specifications that are material to your purchase decision. Litho. U.S.A. FOR 1407 P/W: 2016.12.28