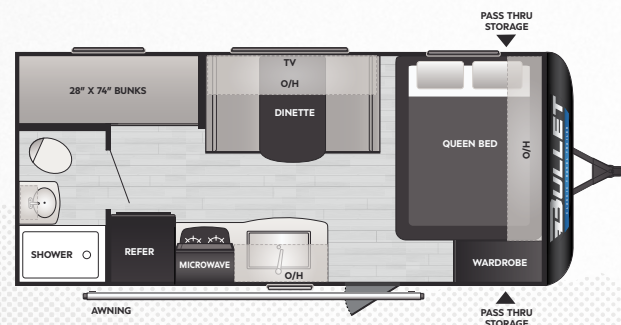




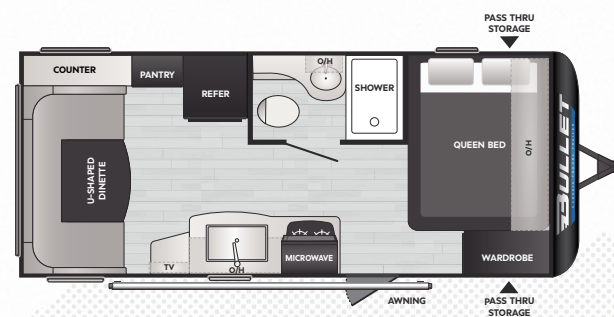
KEYSTONE
RV COMPANY

BULLET

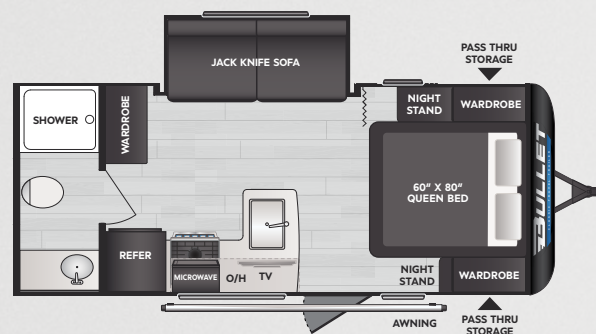
2025 | CLASSIC TRAVEL TRAILERS



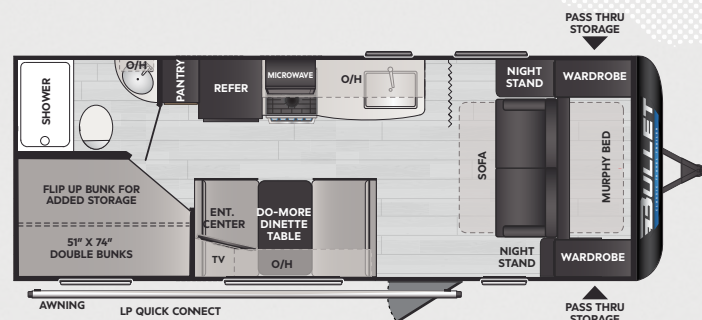
SINGLE AXLE 1700BH | WEIGHT **3529** | LENGTH **21' 5"**



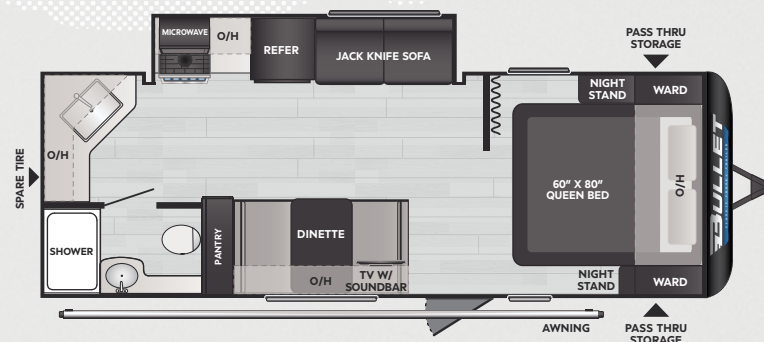
SINGLE AXLE 1900RD | WEIGHT **3547** | LENGTH **21' 11"**



1840RB | WEIGHT **4337** | LENGTH **22' 11"**



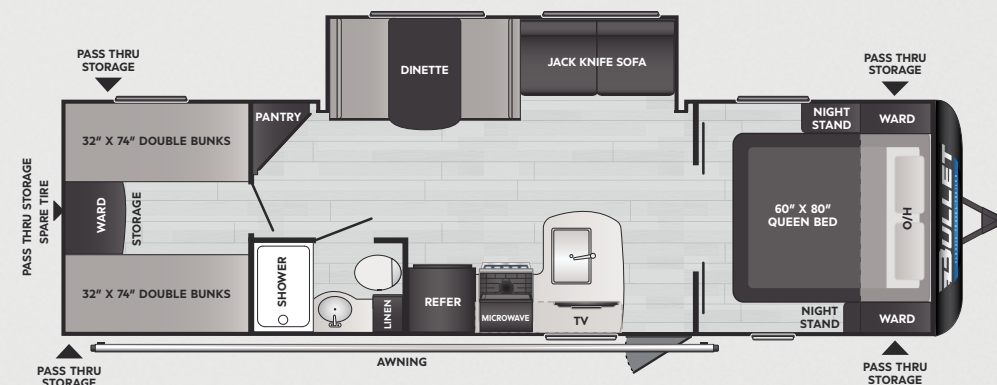
2140BH | WEIGHT **TBD** | LENGTH **TBD**



2240RK | WEIGHT **4740** | LENGTH **26' 9"**



2640BH | WEIGHT **5420** | LENGTH **30' 4"**



2840QB | WEIGHT **5950** | LENGTH **32' 9"**

DISCLAIMER: Product information is as accurate as possible as of the date of this publication. All features, floor plans, and specifications are subject to change without notice. Pre-production estimated weights & lengths may be listed; visit [keystonerv.com](https://www.keystonerv.com) for the most current product information and specifications.

CAMP BETTER
KINDNESS · COMMUNITY · PLANET



EQUIPMENT

- » SolarFlex™ Ready
- » Multiple Pre-Wired 110V Plugs Prepped for Inverter
- » 13.5K BTU Ducted A/C
- » 20K BTU Furnace (Single Axle Models Only)
- » 30K BTU Furnace (Dual Axle Models Only)
- » 50 AMP Service W/ 2nd A/C Prep (2640 & 2840 Only)
- » (2) 20 LBS. Propane Bottles
- » Girard® Tankless Water Heater
- » Large Double-Door 12V Refrigerator
- » Microwave W/ Carousel
- » 2-Burner High Output Range (Single Axle Models Only)
- » 3-Burner High Output Range and Oven W/ Glass Top (Dual Axle Models Only)
- » Interior Control Panel
- » Battery Disconnect
- » 32" TV

MISCELLANEOUS

- » 3-Year Limited Structural Warranty
- » 1-Year Limited Base Warranty
- » Keystone Digital Owner's Manual
- » First Time Camper's Video Series
- » DIY Repair Program

OPTIONS

- » SolarFlex™ Protect
- » 15K BTU Ducted A/C
- » 2nd 13.5K BTU A/C (Select Models)

SAFETY

- » Breakaway Switch and Safety Chains
- » GFI Receptacles
- » Carbon Monoxide Detector
- » Smoke Detector
- » Propane Gas Leak Detector
- » Fire Extinguisher

INTERIOR

- » **NEW** Tranquil Timber Interior Decor
- » Residential 60" x 80" Queen Bed (Dual Axle Models Only)
- » Deluxe Night Shades
- » Residential-Style Bathroom Countertops
- » LED Lighting Throughout

EXTERIOR

- » **NEW** Edge View Exterior Lighting
- » S Lock Metal Front Cap W/ Rock Guard
- » 4-Point Power Stabilizer Jacks (Dual Axle Models Only)
- » Glass Entry Door W/ Deadbolt
- » (4) 3K LBS. 24" Manual Stabilizer Jacks (Single Axle Models Only)
- » Heated and Enclosed Underbelly
- » Leaf Spring Straight Axles
- » 80% Tinted Safety Glass Windows

CONSTRUCTION

- » HyperDeck™ Flooring (Select Models Only)
- » Fully Walkable Roof
- » Limited Lifetime Warranty on Roof Membrane
- » Tru-Fit™ Slide Construction
- » Seamless, Laminated, and Gel-Coated Filon Exterior
- » 12V Color-Coded Wiring
- » Residential Durable Beauflor® Vinyl Flooring
- » Engineering Specifically for Each Floorplan

STANDARD FEATURES & OPTIONS

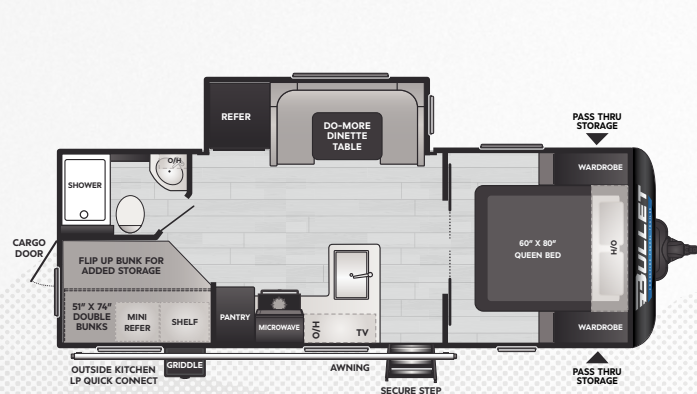




KEYSTONE
RV COMPANY

BULLET

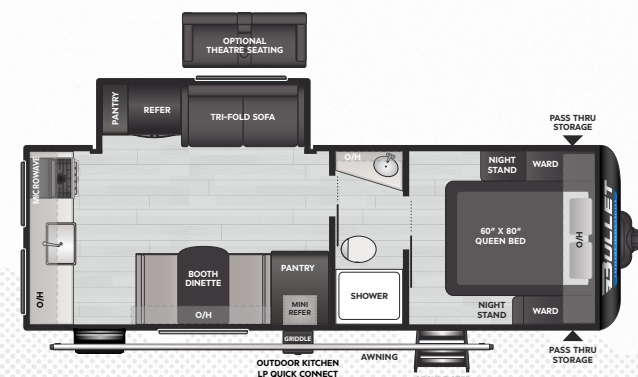
2025 | CROSSFIRE TRAVEL TRAILERS



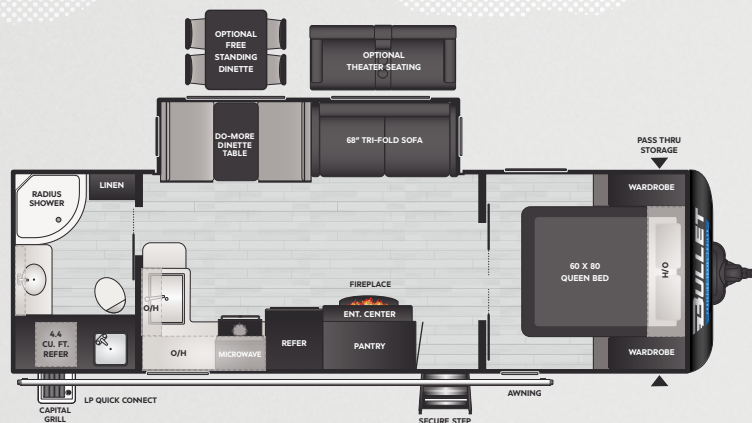
2290BH | WEIGHT **5585** | LENGTH **27' 0"**



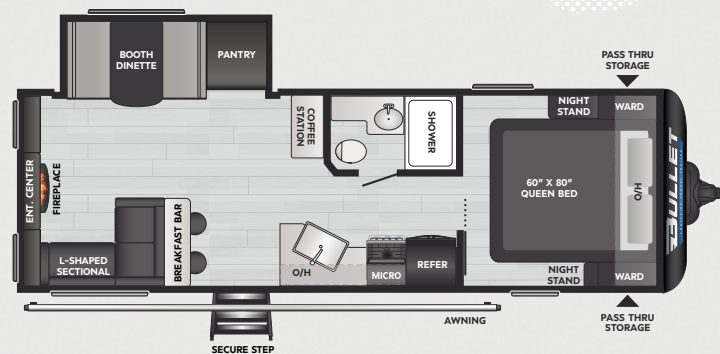
2530RD | WEIGHT **5670** | LENGTH **29' 10"**



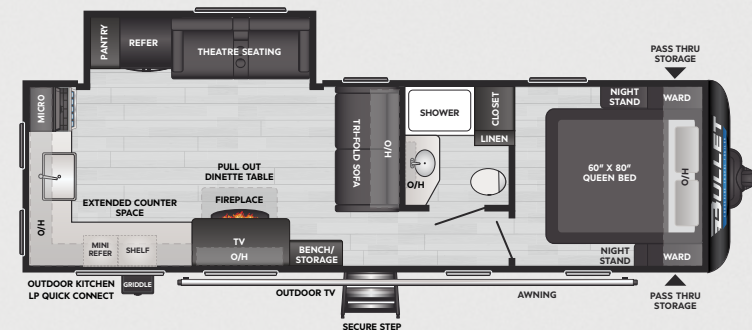
245RKS | WEIGHT **TBD** | LENGTH **28' 8"**



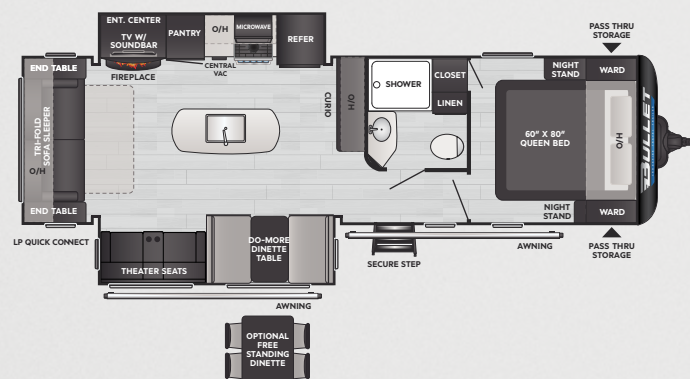
260RBS | WEIGHT **6495** | LENGTH **30' 6"**



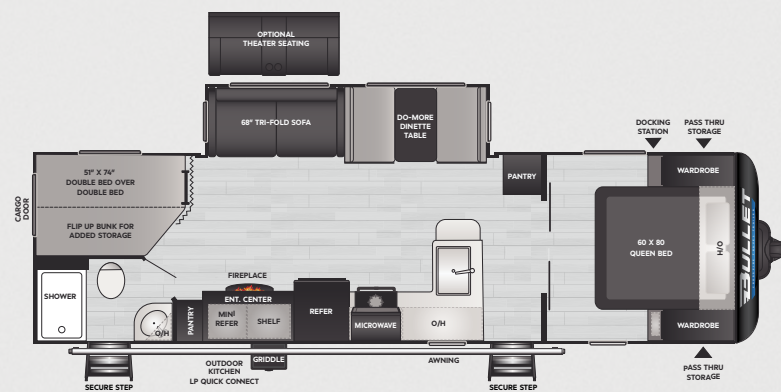
266RLS | WEIGHT **TBD** | LENGTH **30' 8"**



270RKS | WEIGHT **6715** | LENGTH **31' 11"**



287RLS | WEIGHT **7198** | LENGTH **32' 7"**



290BHS | WEIGHT **6525** | LENGTH **33' 3"**

DISCLAIMER: Product information is as accurate as possible as of the date of this publication. All features, floor plans, and specifications are subject to change without notice. Pre-production estimated weights & lengths may be listed; visit Keystonerv.com for the most current product information and specifications.

CAMP BETTER
KINDNESS · COMMUNITY · PLANET





KEYSTONE
RV COMPANY

BULLET

2025 | CROSSFIRE TRAVEL TRAILERS

INTERIOR

- » NEW Tranquil Timber Interior Decor
- » NEW Interior Line Lights W/ Dimmer
- » NEW Upgraded Hardwood Window Trim and Sills
- » Premium Pull Down Roller Shades
- » NEW Black Stainless Steel Farm Sink
- » NEW Waterfall Kitchen Faucet W/ Pull-Out Sprayer
- » NEW Rainfall Shower Head
- » Porcelain Foot-Flush Toilet
- » Residential 60" x 80" Queen Bed
- » NEW Decorative Bedspread
- » 68" Tri-Fold Sofa (Select Models)
- » Residential-Style Bathroom Countertops
- » Skylight Above Every Shower and Tub
- » Fireplace (Select Models)
- » LED Lighting Throughout
- » Seamless Kitchen Countertops

EXTERIOR

- » NEW Edge View Exterior Line Lighting
- » NEW High Impact Thermoset Resin Painted Front Cap W/ Rock Guard
- » NEW Dexter® Torsion Axle Rubber Ride Suspension W/ 10-Year Warranty
- » Goodyear® Endurance® Tires
- » Heated and Enclosed Underbelly
- » NEW Extra Long Spray Hose W/ Outside Shower W/ Hot & Cold
- » 4-Point Power Stabilizer Jacks
- » Power Tongue Jack
- » NEW Glass Entry Door W/ Deadbolt
- » Solid Entry Steps
- » 80% Tinted Safety Glass Windows
- » Rear Accessory Hitch

OPTIONS

- » 15K BTU A/C
- » 2nd 13.5K BTU A/C (Select Models)
- » SolarFlex™ Discover 440i W/ Inverter
- » (2) 100 AMP Hour Dragonfly® Lithium-Ion Batteries
- » Theater Seating IPO Tri-Fold Sofa (Select Models)
- » Freestanding Table & Chair IPO Booth Dinette (Select Models)

MISCELLANEOUS

- » 3-Year Limited Structural Warranty
- » 1-Year Limited Base Warranty
- » Keystone Digital Owner's Manual
- » First Time Camper's Video Series
- » DIY Repair Program

EQUIPMENT

- » SolarFlex™ Protect 220
- » Multiple Pre-Wired 110V Plugs Prepped for Inverter
- » 13.5K BTU A/C
- » 30K BTU Furnace
- » 50 AMP Service W/ 2nd A/C Prep (Select Models)
- » Exterior Convenience Center
- » Battery Disconnect W/ Giddy Box
- » KeyTV™ Multisource Signal Controller
- » 4G LTE W/ WiFi and Satellite Prep
- » Outdoor Kitchen W/ Griddle Cooktop & Mini Refrigerator (Select Models)
- » Girard® Tankless Water Heater
- » NEW Combo Microwave and Air Fryer/Convection Oven
- » (2) 20 LBS. Propane Bottles W/ Flip-Top Cover
- » Interior Control Panel
- » 10 Cu. Ft. Double-Door 12V Refrigerator
- » 12V Smart TV, FM, AUX Input, Bluetooth W/ Built in Sound Bar
- » JBL® Exterior Speakers
- » 3-Burner High Output Range W/ Glass-Top and Oven

CONSTRUCTION

- » Tuf-Lok™ Thermoplastic A/C Duct Joiners
- » Tru-Fit™ Slide Construction
- » HyperDeck™ Flooring
- » Fully Walkable Roof W/ Rear Ladder
- » Limited Lifetime Warranty on Roof Membrane
- » Engineered Specifically for Each Floorplan
- » Seamless, Laminated, and Gel-Coated Filon Exterior
- » 12V Color-Coded Wiring
- » BAL® Accu-Slide™ Cable Slideout System W/ Manual Override
- » Residential Durable Beauflor® Vinyl Flooring

SAFETY

- » Breakaway Switch and Safety Chains
- » GFI Receptacles
- » Carbon Monoxide Detector
- » Smoke Detector
- » Propane Gas Leak Detector
- » Fire Extinguisher
- » Solar Panel Disconnect Switch

STANDARD FEATURES & OPTIONS



DISCLAIMER: Product information is as accurate as possible as of the date of this publication. All features, floor plans, and specifications are subject to change without notice. Pre-production estimated weights & lengths may be listed; visit Keystonerv.com for the most current product information and specifications.

CAMP BETTER
KINDNESS · COMMUNITY · PLANET

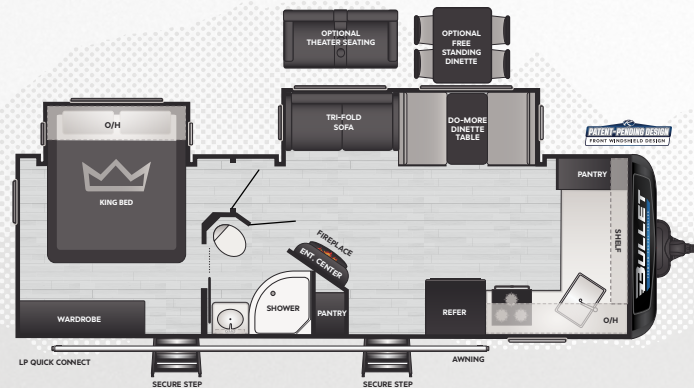




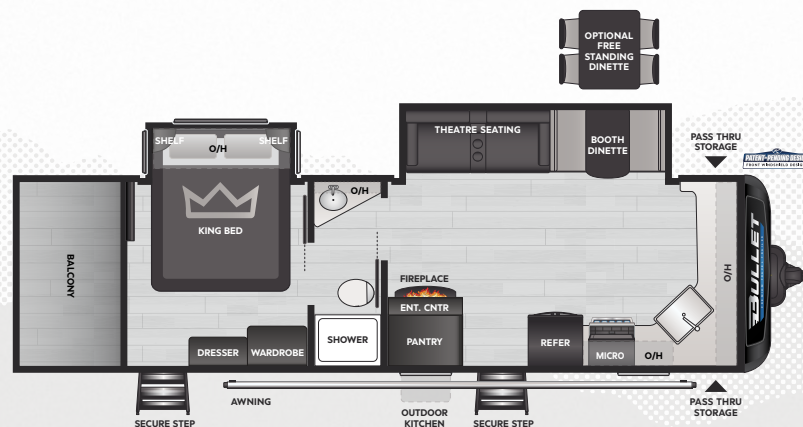
KEYSTONE
RV COMPANY

BULLET

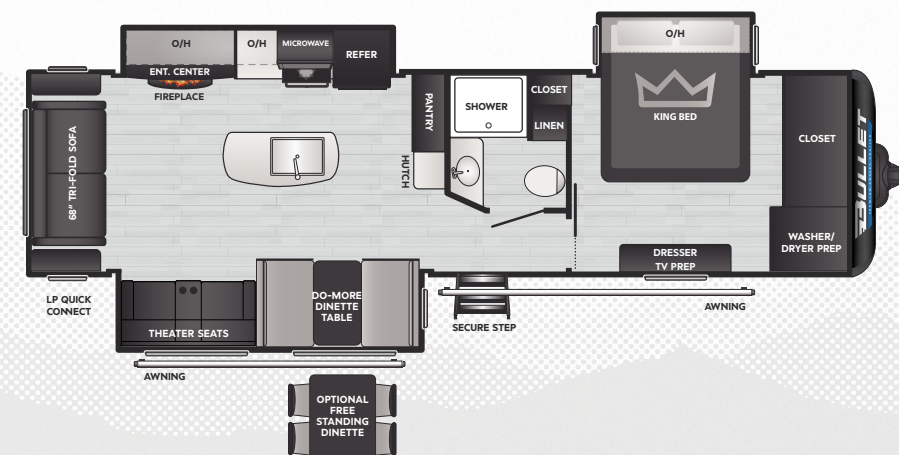
2025 | PREMIUM TRAVEL TRAILERS



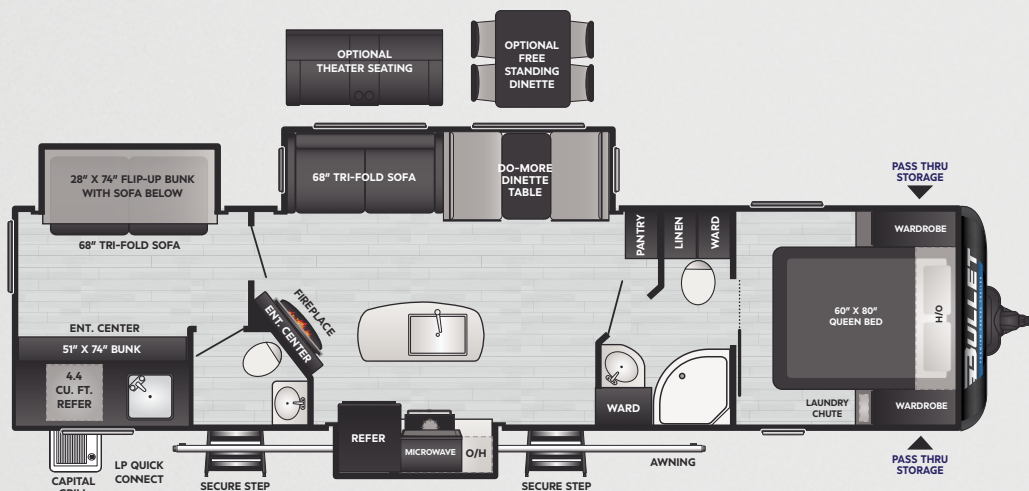
265FKS | WEIGHT **6650** | LENGTH **30' 3"**



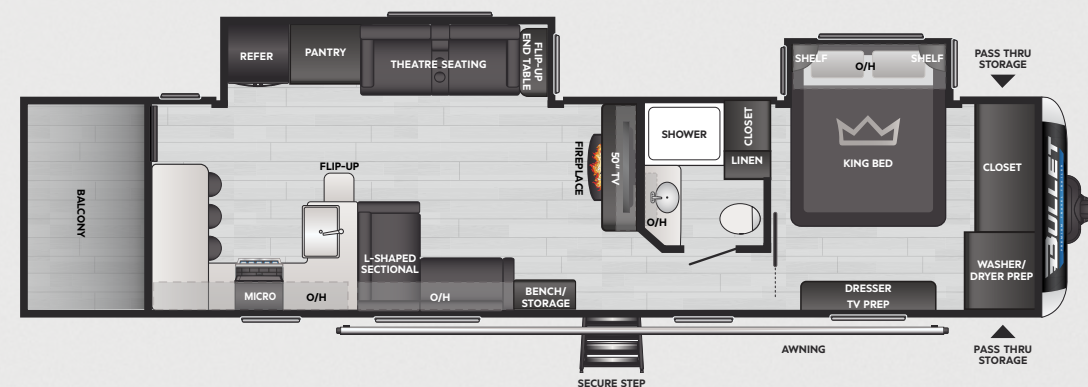
271KBS | WEIGHT **TBD** | LENGTH **31' 6"**



310RES | WEIGHT **7965** | LENGTH **35' 11"**



330BKQ | WEIGHT **8225** | LENGTH **37' 11"**



336BBK | WEIGHT **TBD** | LENGTH **37' 9"**

DISCLAIMER: Product information is as accurate as possible as of the date of this publication. All features, floor plans, and specifications are subject to change without notice. Pre-production estimated weights & lengths may be listed; visit [keystonerv.com](https://www.keystonerv.com) for the most current product information and specifications.

CAMP BETTER
KINDNESS · COMMUNITY · PLANET





KEYSTONE
RV COMPANY

BULLET

2025 | PREMIUM TRAVEL TRAILERS

INTERIOR

- » **NEW** Tranquil Timber Interior Decor
- » **NEW** Interior Line Lights W/ Dimmer
- » **NEW** Upgraded Hardwood Window Trim & Sills
- » Premium Pull Down Roller Shades
- » **NEW** Black Stainless Steel Farm Sink
- » **NEW** Waterfall Kitchen Faucet W/ Pull-Out Sprayer
- » Solid Surface Kitchen Countertops
- » **NEW** Rainfall Shower Head
- » Porcelain Foot-Flush Toilet
- » Residential 60" x 80" Queen Bed (Select Models)
- » Residential 70" x 80" King Bed (Select Models)
- » **NEW** Decorative Bedspread
- » Residential-Style Bathroom Countertops
- » Skylight Above Every Shower and Tub
- » LED Lights Throughout

EXTERIOR

- » **NEW** Edge View Exterior Line Lighting
- » **NEW** High Impact Thermoset Resin Painted Front Cap W/ Rock Guard
- » **NEW** Dexter® Torsion Axle Rubber Ride Suspension W/ 10-Year Warranty
- » Goodyear® Endurance® Tires
- » Heated and Enclosed Underbelly
- » **NEW** Extra Long Spray Hose W/ Outside Shower W/ Hot & Cold
- » 4-Point Power Stabilizer Jacks
- » Power Tongue Jack
- » **NEW** Glass Entry Door W/ Deadbolt
- » Solid Entry Steps
- » 80% Tinted Safety Glass Window
- » Rear Accessory Hitch

OPTIONS

- » 2nd 13.5K BTU A/C
- » SolarFlex™ Discover W/ Inverter
- » (2) 100 AMP Hour Dragonfly® Lithium-Ion Batteries
- » Theater Seating IPO Tri-Fold Sofa (Select Models)
- » Free Standing Table & Chairs IPO Booth Dinette (Select Models)

EQUIPMENT

- » SolarFlex™ Protect
- » Multiple Pre-Wired 110V Plugs Prepped for Inverter
- » 15K BTU Ducted A/C (STD)
- » 50 AMP Service W/ 2nd A/C Prep
- » 30K BTU Furnace
- » Exterior Convenience Center
- » Battery Disconnect W/ Giddy Box
- » KeyTV™ Multisource Signal Controller
- » 4G LTE W/ WiFi and Satellite Prep
- » Girard® Tankless Water Heater
- » Outdoor Kitchen W/ Griddle Cooktop & Mini Refrigerator (Select Models)
- » **NEW** Combo Microwave and Air Fryer/Convection Oven
- » 12V Smart TV, FM, AUX Input, Bluetooth W/ Built in Sound Bar
- » JBL® Exterior Speakers
- » 10 Cu. Ft. Double-Door 12V Refrigerator
- » 3-Burner High Output Range W/ Glass-Top and Oven
- » Interior Control Panel

CONSTRUCTION

- » HyperDeck™ Flooring
- » BAL® Accu-Slide™ Cable Slideout System W/ Manual Override
- » Tru-Fit™ Slide Construction
- » Fully Walkable Roof W/ Rear Ladder
- » Limited Lifetime Warranty on Roof Membrane
- » Seamless, Laminated, and Gel-Coated Filon Exterior
- » Residential Durable Beauflor® Vinyl Flooring
- » 12V Color-Coded Wiring
- » Tuf-Lok™ Thermoplastic A/C Duct Joiners
- » Engineering Specifically for Each Floorplan

SAFETY

- » Breakaway Switch and Safety Chains
- » GFI Receptacles
- » Carbon Monoxide Detector
- » Smoke Detector
- » Propane Gas Leak Detector
- » Fire Extinguisher
- » Solar Panel Disconnect Switch

MISCELLANEOUS

- » 3-Year Limited Structural Warranty
- » 1-Year Limited Base Warranty
- » Keystone Digital Owner's Manual
- » First Time Camper's Video Series
- » DIY Repair Program

STANDARD FEATURES & OPTIONS



Colton RV & Marine
3122 Niagara Falls Blvd.
North Tonawanda, NY 14120
(716) 694-0188
www.ColtonRV.com

Colton RV
489 Bushkill Plaza LN #9665
Wind Gap, PA 18091
(610) 863-5239
www.ColtonRV.com

DISCLAIMER: Product information is as accurate as possible as of the date of this publication. All features, floor plans, and specifications are subject to change without notice. Pre-production estimated weights & lengths may be listed; visit Keystonerv.com for the most current product information and specifications.

CAMP BETTER
KINDNESS · COMMUNITY · PLANET

