

UN·MAPPED

r.pod



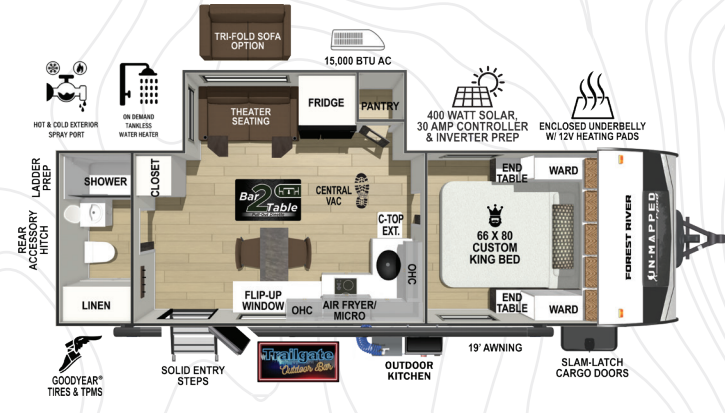
FOREST RIVER

FORESTRIVERINC.COM

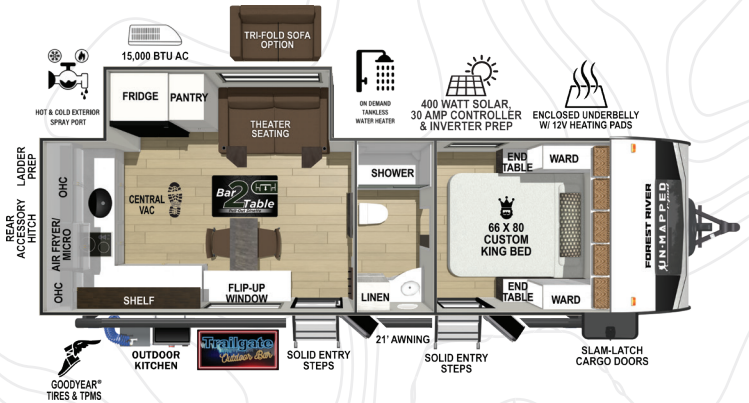
UN•MAPPED

FLOORPLANS

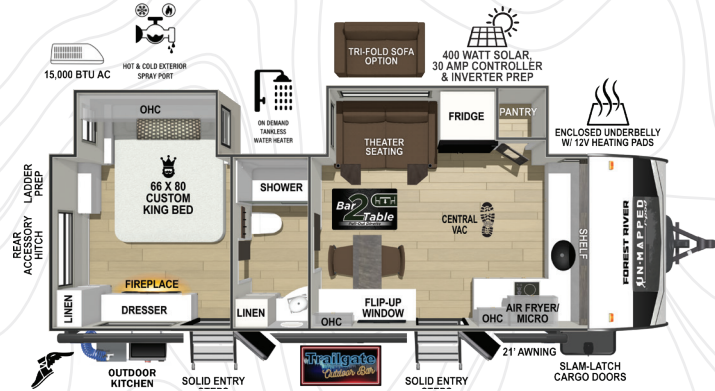
r.pod



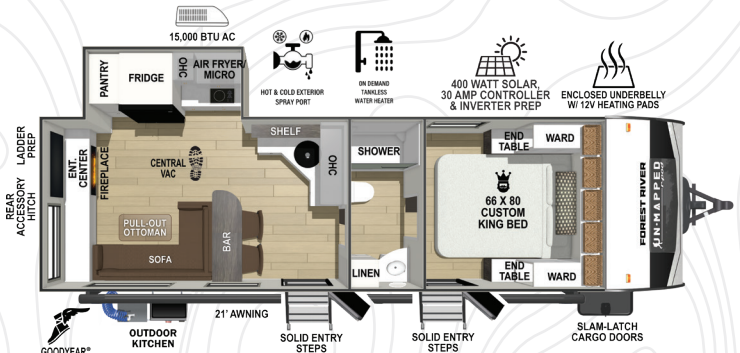
| 22RB | UVW | HITCH | CCC | LENGTH | HEIGHT | WIDTH | CAPACITY (GAL) | | |
|------|-------|-------|-------|---------|--------|-------|----------------|----|----|
| | 5,693 | 640 | 1,500 | 27' 11" | 10' 8" | 8' | 40 | 60 | 30 |



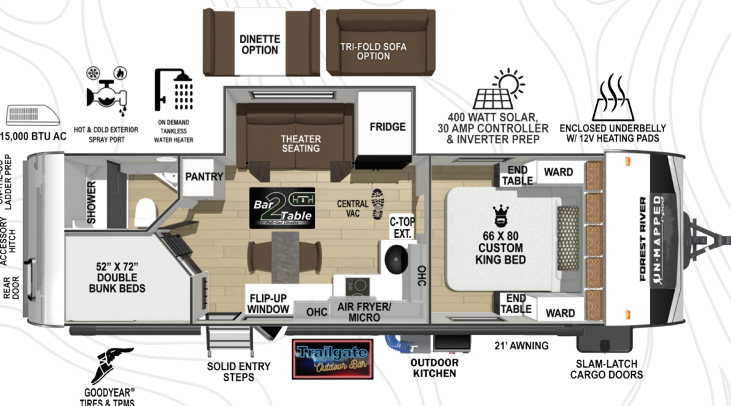
| 24RK | UVW | HITCH | CCC | LENGTH | HEIGHT | WIDTH | CAPACITY (GAL) | | |
|------|-------|-------|-------|---------|--------|-------|----------------|----|----|
| | 5,928 | 760 | 1,500 | 28' 11" | 10' 6" | 8' | 40 | 70 | 30 |



| 25FK | UVW | HITCH | CCC | LENGTH | HEIGHT | WIDTH | CAPACITY (GAL) | | |
|------|-------|-------|-------|--------|--------|-------|----------------|----|----|
| | 6,258 | 670 | 1,412 | 29' | 10' 6" | 8' | 40 | 70 | 30 |



| 25RL | UVW | HITCH | CCC | LENGTH | HEIGHT | WIDTH | CAPACITY (GAL) | | |
|------|-------|-------|-------|--------|--------|-------|----------------|----|----|
| | 5,778 | 735 | 1,500 | 29' 0" | 10' 8" | 8' | 40 | 40 | 30 |



| 26BH | UVW | HITCH | CCC | LENGTH | HEIGHT | WIDTH | CAPACITY (GAL) | | |
|------|-------|-------|-------|---------|--------|-------|----------------|----|----|
| | 5,878 | 875 | 1,500 | 28' 11" | 10' 8" | 8' | 40 | 60 | 30 |



| 26ML | UVW | HITCH | CCC | LENGTH | HEIGHT | WIDTH | CAPACITY (GAL) | | |
|------|-------|-------|-------|---------|--------|-------|----------------|----|----|
| | 5,668 | 720 | 1,500 | 28' 11" | 10' 6" | 8' | 40 | 40 | 30 |

BAR 2 TABLE



Bar2Table is a new concept that allows you to enjoy a bar top for 2—or to convert the layout into a more traditional 4-person dinette top. The **Bar2Table** feature comes complete with a flip up, truck style window for open air dining and pristine views.

TRAILGATE OUTDOOR BAR



Select Un•mapped floorplans will also debut with the new **TrailGate Outdoor Bar**. This unique outdoor setup maximizes space while providing an area to prepare refreshments or entertain guests.



25RL



24RK



25RL

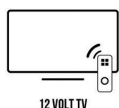
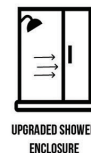
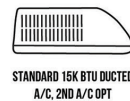


22RB



25RL

Un-Matched Standard Features



SUPERIOR CONSTRUCTION



1 Laminated Sidewalls, Rear Wall, Slide-Outs, & Floor

- Solid wall construction
- Block foam insulated
- Superior durability

2 Azdel Composite Sidewalls, Rear Wall, Front Wall, & Slide-Outs

- Replaces plywood used by competing brands
- Water resistant material
- Helps prevent rot, mold, & delamination
- Increases insulation values

3 Laminated Sidewalls, Rear Wall, Slide-Outs, and Floor

- Welded aluminum framing around all openings
- Lighter weight than competing brands: true half ton towable
- Stronger & better constructed

4 Fully walkable roof with industry-best PVC membrane

- 16" on-center trusses, plywood decking, & residential style insulation
- 15 year warranty on PVC membrane
- No treatments required on PVC — saves time & money

5 Extended Season Ready

- 2" aluminum framed floor with block foam insulation
- Underbelly sealed and insulated with radiant foil
- Forced heat to underbelly through dedicated duct
- Heated holding tanks with 12V heating pads



SCAN ME
FOR MORE UN-MAPPED DETAILS

EACH NEW FOREST RIVER PURCHASE PROVIDES:

- ✓ Pre-delivery Inspection.
- ✓ Digital Owner's Manual.
- ✓ Free Membership to Forest River Owners Group (FROG).
Learn more at www.forestriverfrog.com.
- ✓ A Contribution to Care Camps Foundation www.carecamps.org.
- ✓ 1 Year Free Roadside Assistance from Date of Purchase.



LEARN MORE:

Scan this QR code with your mobile device to learn more about Forest River.



SPECIFICATION DEFINITIONS:

Scan this barcode using a QR reader on your smartphone to learn RV terminology and more!



Colton RV & Marine
3122 Niagara Falls Blvd
North Tonawanda, NY 14120
(716) 694-0188
www.ColtonRV.com

Colton RV & Marine
3443 Southwestern Blvd.
Orchard Park, NY 14127
(716) 957-3250
www.Coltonrv.com

YOUR UN-MAPPED DEALER