

Springdale

TRAVEL TRAILERS & FIFTH WHEELS

Summerland

TRAVEL TRAILERS



A BETTER WAY TO CAMP



 **Keystone RV
Company**

Eastern Edition

A BETTER WAY TO CAMP



Founded 15 years ago, **SPRINGDALE** is one of Keystone RV Company's original brands. Right from the beginning our mission has been to deliver to our customers "**A Better Way To Camp.**" By offering you the best floorplans, features, quality and value it was our goal to make the **SPRINGDALE** brand grow and thrive. Today **SPRINGDALE** is recognized as the benchmark of success in the RV industry and one of the industry's top selling brands. With our focus on giving you "**A Better Way To Camp**" **SPRINGDALE** travel trailers and fifth wheels continue to help our owners create memories that will last a life time.

With **SPRINGDALE**, we understand that our customers hard earned money should go just as far as their adventures can take them. That is why we believe in the importance of delivering the best floor plans, best features, best look and best quality... period. Once on the road to adventure, our customers will see how camping in their **SPRINGDALE** travel trailer or fifth wheel "is just plain better"! Unmatched in its design, **SPRINGDALE** offers numerous features you can't find on any other brands as well as more standard options and amenities than any other brand in its class. From our interior vaulted ceiling and 14' Super Slide Room to the "**Do More**" dinette table, we have remained focused on providing great value and convenient features that will always make camping in your **SPRINGDALE... A Better Way To Camp!**



311RE SHOWN IN SANDSTONE DECOR

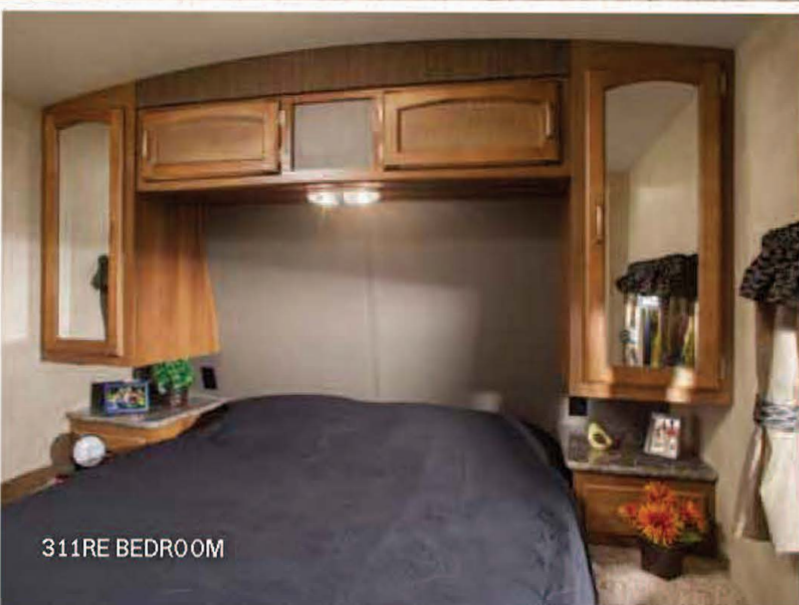


311RE BATHROOM

Springdale

TRAVEL TRAILERS & FIFTH WHEELS

A BETTER WAY
TO CAMP



311RE BEDROOM



311RE SHOWN IN SANDSTONE DECOR

Springdale

TRAVEL TRAILERS & FIFTH WHEELS

320FWFB SHOWN IN MOREL DECOR

**A BETTER WAY
TO CAMP**



320FWFB BUNKROOM



320FWFB BATHROOM



EXTRA LARGE ENTRY HANDLE
Oversized non slip handle mounted with
double backers for extra security



ALUMINUM RIMS
A lighter rim with a sporty look
without the rust



TRI-FOLD SLEEPER SOFA
The fastest setup time of any sofa/sleeper & the
comfort will leave your guest fighting for the bed

320FWFB SHOWN IN MOREL DECOR



320FWFB BEDROOM



Springdale
VAULTED CEILING
RAISING THE BAR ON INNOVATION
6'10"

VAULTED CEILING
No more hitting your head on the ceiling
with this industry-first by Springdale



POWER TONGUE JACK
Hitching and leveling made easy with
no more cranking



ELECTRIC AWNING
Our quick & easy one touch power awning will elimi-
nate the need to have two people set up your awning

Adventure

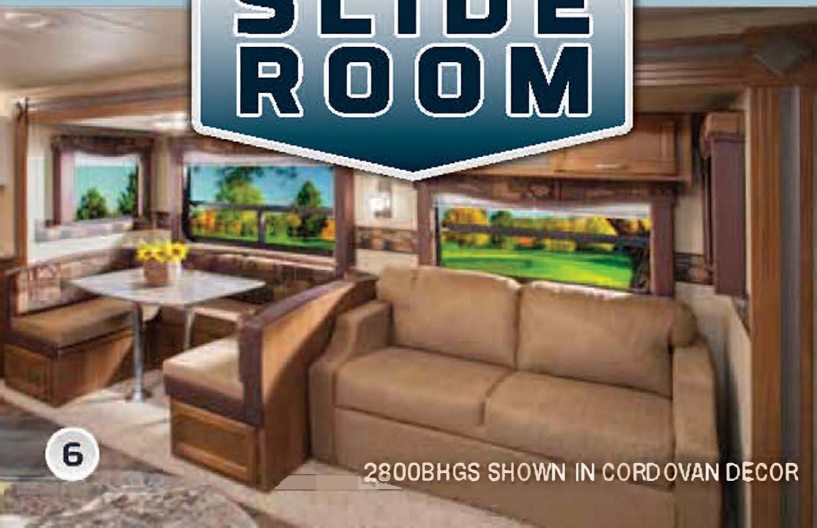
Begins Here.



Why not have exactly what you want and need to go camping and do it in style? Summerland by Springdale offers a great look and awesome features at a price that will fit any budget. Versatile floorplans, a variety of sizes, and packed with so many features you will not want to stay home! Summerland has what you want and everything you need to begin your Adventure!

As you can see, we made the new Summerland both eye catching and functional. With an abundance of cabinets, overhead storage, and closets, there is plenty of room to stow all your gear. Our Super Slide Room models are spacious enough for you to stretch out and relax. The Summerland 2800BHGS shown here in Cordovan decor will whisk you away for an adventure and memories you will not soon forget!

SUPER SLIDE ROOM



2800BHGS SHOWN IN CORDOVAN DECOR



2800BHGS BUNKROOM



2800BHGS BATHROOM & VANITY

Summerland

TRAVEL TRAILERS



Springdale

A BETTER WAY
TO CAMP

TRAVEL TRAILER FLOORPLANS



WEIGHT: 5852
LENGTH: 25' 3" ● 225RB



WEIGHT: 6349
LENGTH: 29' 6" ● 266RL



WEIGHT: 6858
LENGTH: 32' 1" ● 282BH



WEIGHT: 7985
LENGTH: 32' 8" ● 287RB



WEIGHT: 6978
LENGTH: 33' 3" ● 293RK



WEIGHT: 7052
LENGTH: 33' 5" ● 294BH



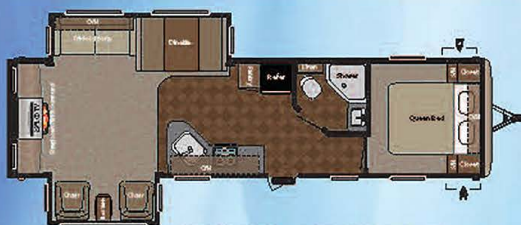
WEIGHT: 7081
LENGTH: 32' 0" ● 297BH



WEIGHT: 7948
LENGTH: 35' 0" ● 303BH



WEIGHT: 7940
LENGTH: 35' 11" ● 310BH



WEIGHT: 8238
LENGTH: 35' 7" ● 311RE



WEIGHT: 9065
LENGTH: 37' 0" ● 330KI

38's TRAVEL TRAILERS



WEIGHT: 8685
LENGTH: 38' 11" ● 38BH



WEIGHT: 8615
LENGTH: 38' 11" ● 38FL



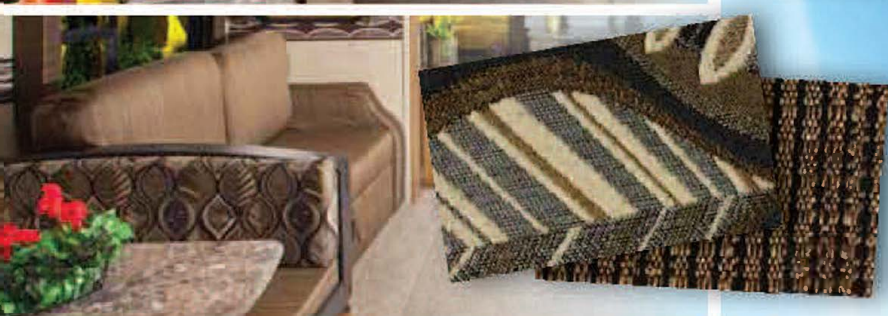
WEIGHT: TBD
LENGTH: 38' 11" ● 38FQ



CORDOVAN



MOREL



SANDSTONE

DECOR OPTIONS



STAY IN TOUCH

Springdale & Summerland are always just a touch away. You'll find 360 virtual tours, location of your nearest dealer, photos, videos and all of the latest information about Springdale & Summerland. Everything you need can be accessed anytime, day or night, from home or on the road. You can also find us on the Keystone RV Facebook.



Springdale Travel Trailer Specifications

Travel Trailer	225RB	266RL	282BH	287RB	293RK	294BH	297BH
Shipping Weight	5852	6349	6858	7985	6978	7052	7081
Carrying Capacity	1828	1391	2712	1755	2762	2608	2579
Hitch Weight	680	740	770	940	940	860	860
Exterior Length*	26' 3"	29' 6"	32' 1"	32' 8"	33' 3"	33' 5"	32'
Ext Height	11' 3"	11' 3"	11' 3"	11' 3"	11' 3"	11' 3"	11' 3"
Fresh Water	55	55	55	55	55	55	55
Waste Water	42	42	42	42	42	42	32
Grey Water	42	42	74	74	74	42	42
LPG Capacity	60	60	60	60	60	60	60

Travel Trailer	303BH	310BH	311RE	330KI	38BH	38FL	38FQ
Shipping Weight	7948	7940	8238	9065	8685	8615	TBD
Carrying Capacity	1822	1955	1522	2185	2525	2490	TBD
Hitch Weight	970	1095	960	1310	1050	945	TBD
Exterior Length*	35'	35' 11"	35' 7"	37'	38' 11"	38' 11"	TBD
Ext Height	11' 4"	10' 11"	10' 11"	11' 4"	11' 4"	11' 4"	TBD
Fresh Water	55	55	55	55	59	59	TBD
Waste Water	42	42	42	42	42	42	TBD
Grey Water	42	84	84	68	68	68	TBD
LPG Capacity	60	60	60	60	60	60	TBD

DISCLAIMER: Product information is as accurate as possible as of the date of publication of this brochure. All features, floor plans, and specifications in this brochure are subject to change without notice. Please also consult Keystone's web site at www.keystonerv.com for more current product information and specifications. Tow Vehicle Disclaimer: CAUTION: Owners of Keystone recreational vehicles are solely responsible for the selection and proper use of tow vehicles. All customers should consult with a motor vehicle manufacturer or their dealer concerning the purchase and use of suitable tow vehicles for Keystone products. Keystone disclaims any liability or damages suffered as a result of the selection, operation, use or misuse of a tow vehicle. KEYSTONE'S LIMITED WARRANTY DOES NOT COVER DAMAGE TO THE RECREATIONAL VEHICLE OR THE TOW VEHICLE AS A RESULT OF THE SELECTION, OPERATION, USE OR MISUSE OF THE TOW VEHICLE. *Length is defined as the distance from the centerline of hitch pin/coupler to rear bumper of trailer. 04/14

Summerland

TRAVEL TRAILERS



WEIGHT: 4107
LENGTH: 23' 7" • **1890FL**



WEIGHT: 4287
LENGTH: 24' 10" • **2020QB**



WEIGHT: 5843
LENGTH: 29' 8" • **2570RL**



WEIGHT: 4786
LENGTH: 28' 10" • **2600TB**



WEIGHT: 5783
LENGTH: 28' 11" • **2670BHGS**



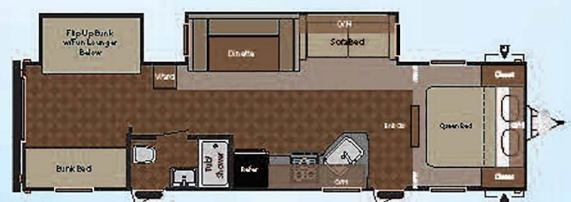
WEIGHT: 6345
LENGTH: 31' 9" • **2800BHGS**



WEIGHT: 6439
LENGTH: 32' 1" • **2820BHGS**



WEIGHT: 6342
LENGTH: 32' 7" • **2980BHGS**



WEIGHT: 7313
LENGTH: 34' 11" • **3030BHGS**

Summerland Travel Trailer Specifications

Travel Trailer	1890FL	2020QB	2570RL	2600TB	2670BHGS	2800BHGS	2820BHGS	2980BHGS	3030BHGS
Shipping Weight	4107	4287	5843	4786	5783	6345	6439	6342	7313
Carrying Capacity	2303	2213	1772	2759	1862	2055	2160	3173	2342
Hitch Weight	410	515	615	545	645	730	690	715	855
Exterior Length*	23' 7"	24' 10"	29' 8"	28' 10"	28' 11"	31' 9"	32' 1"	32' 7"	34' 11"
Ext Height	10' 6"	10' 6"	10' 6"	10' 6"	10' 11"	10' 11"	11' 3"	10' 11"	10' 11"
Fresh Water	55	55	55	55	55	55	55	55	55
Waste Water	32	34	42	42	32	32	32	32	32
Grey Water	42	42	34	34	42	84	84	42	42
LPG Capacity	40	40	40	40	40	40	40	40	40



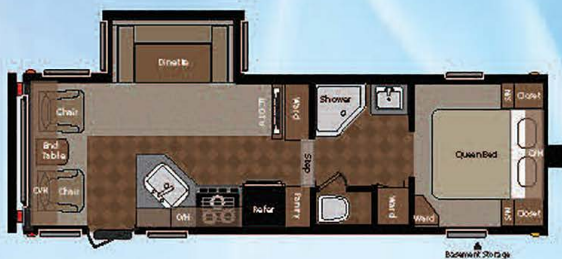
Get the free mobile app at <http://gettag.mobi> and scan this tag.



Springdale

A BETTER WAY TO CAMP

FIFTH WHEEL FLOOR PLANS



WEIGHT: 6439
LENGTH: 27' 8" Ⓢ **247FWRL**



WEIGHT: 8065
LENGTH: 31' 11" Ⓢ **253FWRE**



WEIGHT: 7291
LENGTH: 31' 11" Ⓢ **280FWRK**



WEIGHT: TBD
LENGTH: TBD Ⓢ **TBD**



WEIGHT: 7842
LENGTH: 34' 5" Ⓢ **320FWFB**

Springdale Fifth Wheel Specifications

Fifth Wheel	247FWRL	253FWRE	280FWRK	TBD	320FWFB
Shipping Weight	6439	8065	7291	TBD	7842
Carrying Capacity	1681	1895	2869	TBD	2723
Hitch Weight	1120	1160	1360	TBD	1765
Exterior Length*	27' 8"	31' 11"	31' 11"	TBD	34' 5"
Ext Height	12' 3"	11' 10"	11' 11"	TBD	11' 11"
Fresh Water	55	55	55	TBD	55
Waste Water	42	42	42	TBD	42
Grey Water	74	74	74	TBD	74
LPG Capacity	60	60	60	TBD	60

DISCLAIMER: Product information is as accurate as possible as of the date of publication of this brochure. All features, floor plans, and specifications in this brochure are subject to change without notice. Please also consult Keystone's web site at www.keystonerv.com for more current product information and specifications. **Tow Vehicle Disclaimer.** CAUTION: Owners of Keystone recreational vehicles are solely responsible for the selection and proper use of tow vehicles. All customers should consult with a motor vehicle manufacturer or their dealer concerning the purchase and use of suitable tow vehicles for Keystone products. Keystone disclaims any liability or damages suffered as a result of the selection, operation, use or misuse of a tow vehicle. **KEYSTONE'S LIMITED WARRANTY DOES NOT COVER DAMAGE TO THE RECREATIONAL VEHICLE OR THE TOW VEHICLE AS A RESULT OF THE SELECTION, OPERATION, USE OR MISUSE OF THE TOW VEHICLE.** *Length is defined as the distance from the centerline of hitch pin/coupler to rear bumper of trailer. 04/14

Springdale

TRAVEL TRAILERS & FIFTH WHEELS

Summerland

TRAVEL TRAILERS

Springdale
Fifth Wheels
Summerland

CONSTRUCTION

2 - 30# LP Bottles w/auto change over (with cover TT)	●	●	
Manual Stabilizer Jacks (4)	●		●
Stabilizer Jacks (2)		●	
Electric Front Landing Gear		●	
Fiberglass Exterior		●	
Spread Axle (models w/slides)	●	●	●
E-Z Open Entry Step	●	●	●
Radial Tires	●	●	●
13.5K Ducted A/C (all Springdale most Summerland models)	●	●	●
Tub Surround	●	●	
2x3 Floor Construction 12" OC with 5/Bths Decking	●	●	●
16" on Center Side Walls	●	●	●
16" on Center Raised Roof Truss System	●	●	●
R-7 Insulation-Floor, Roof, Walls	●	●	●
Fully Enclosed Underbelly	●	●	
Powder Coated I-Beam Frame	●	●	●
Diamond Plate	●		
Tinted Safety Glass	●	●	●
50 Amp Service w/Detachable Cord (Select Models)	●	●	

ENTERTAINMENT

2 Exterior Speakers	●	●	●
4 Interior Speakers	●	●	
2 Interior Speakers			●
AM/FM/CD/DVD MP3 Player w/Bluetooth	●	●	
AM/FM/w/Bluetooth			●
Cable and Satellite Prep	●	●	●
28" LCD HD TV	●	●	
32" LCD HD TV (253, 311, 310)	●	●	

KITCHEN

Wallpaper Border	●	●	●
High Impact Acrylic Sink	●	●	●
Steel Ball Bearing Drawer Guides	●	●	●
Residential Lighting in Slide	●	●	
Spice Rack below sink	●	●	●
18" Oven with 3 Burner Cooktop	●	●	●
7 cu. ft. 110V/LP Refrigerator	●	●	
6 cu. ft. 110V/LP Refrigerator			●
Residential Microwave	●	●	●
Do More Dinette Table	●	●	
Vented Range Hood w/Light	●	●	●
Outside Shower	●	●	●
Fabric Pleated Night Shades through out	●	●	

Standards & Options

BED BATH & MORE

Night Stand w/Drawer in Bedroom	●	●	
Night Stand			●
Skylight Over Tub/Shower	●	●	
Forced Air DSI Furnace w/Thermostat (ducted most models)	●	●	●
6 Gal. Gas/Electric DSI Water Heater	●	●	
SS amp Converter	●	●	●
Water Heater Bypass	●	●	●
Manual Patio Awning			●
Jack Knife Sofa Bed			●
Porcelain Foot Flush Toilet	●	●	●

SUMMERLAND

Summer Package			●
Tub Surround			●
6 Gal. Gas DSI Water Heater			●
2-30# LP Gas Bottles w/Cover			●
Outside Shower			●

SAFETY

Fire Extinguisher	●	●	●
Smoke Detector	●	●	●
LP Detector	●	●	●
CO Detector	●	●	●
Safety Chains	●	●	●
Emergency Brake-a-way switch	●	●	●

SPRINGDALE OPTIONS

Tri-Fold Sofa	●	●	
Free Standing Table w/Chairs	●	●	
Aluminum Rims	●	●	
Power Tongue Jack	●	●	
15K BTU A/C	●	●	●
Spare Tire	●	●	●

● Standard

● Option

BUY LOCALLY

PURCHASING YOUR RV LOCALLY

It's up to you where you purchase your new Springdale, but may we suggest your local dealer? Not only does it help your local economy and provide jobs, but it will also give you an opportunity to develop a service relationship with someone that will come to know you and your coach. Congratulations on finding the best built, best equipped and best value in the industry. Happy travels!

Springdale

keystonerv.com/springdale

Summerland

keystonerv.com/summerland



Keystone RV Company



Go RVing.

Your Local Dealer is:

JUNE 2014

Colton RV
North Tonawanda, NY 14120
(716) 694-0188
(800) 628-4889
www.ColtonRV.com

Colton RV
Orchard Park, NY 14127
(716) 957-3250
(800) 628-4889
www.Coltonrv.com