

# SPRINGDALE

2004



*It's a Way of Life...*





We proudly introduce the 2004 Springdale 280 fifth wheel in our Willow interior, offering richness and style previously unheard of in an RV at this moderate price point. Notice the new look created with curved dinette backs, fresh drapery treatments, and the unobscured panoramic view through the 40x72-inch picture window.

The 280 Springdale is a winner when it comes to interior cabinet space. And, for those aspiring gourmet chefs, the ample countertop space is a welcome feature. Also in the kitchen — matching appliances, the residential 60/40 deep bowl sink, and upgraded linoleum flooring, all attuned to the latest interior design trends.



# Easy Living... Incredible Value

Springdale was designed with one main goal—Incredible value for your dollar. With Springdale, you will find that you don't have to spend a fortune to have all the conveniences and features that you want.

We use only high-grade building materials and we feature top brand-name appliances in the building of our products.

Springdale is one of the fastest growing brands in the recreational vehicle industry. In fact, an independent rating company has named Springdale as the best value in the United States in travel trailers and fifth wheels.

We invite you to see for yourself why customers keep coming back to Springdale. Thank you again for your interest in Springdale.

See you in the Great Outdoors!

*Don Clark*

Group V.P.,  
General Manager



Observe the rich effect of floor-to-ceiling cabinetry enhanced by the residential look of cathedral-style doors. You'll be thrilled with the complete wall of deep storage in this Springdale fifth wheel floor plan, reaching all the way into the bedroom.

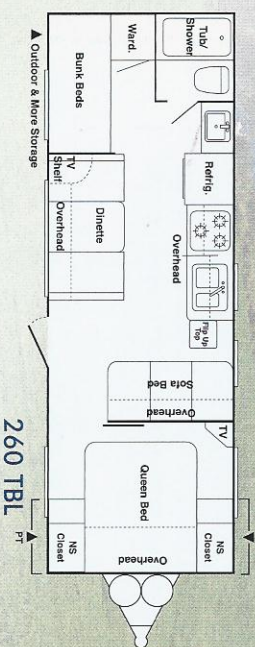
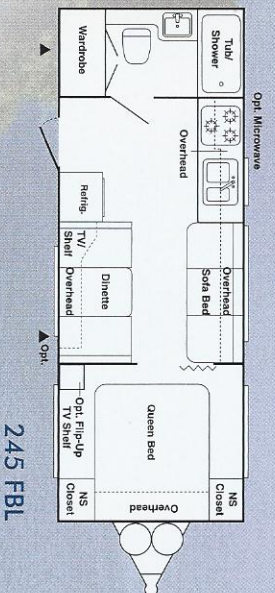
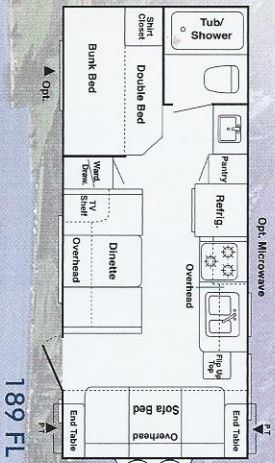
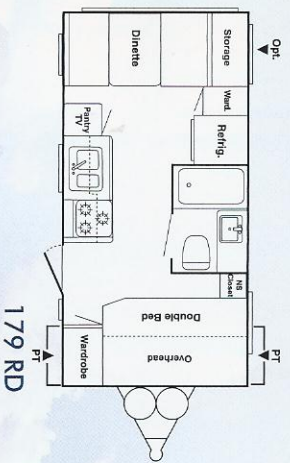
In the foreground, notice the positioning of the entertainment center so that the TV can be enjoyed throughout the living area. Also notice the plush padded carpeting, until now available only in much higher priced RV's. Isn't this the life?

# **SPRINGDALE**

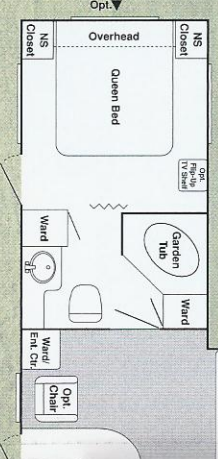
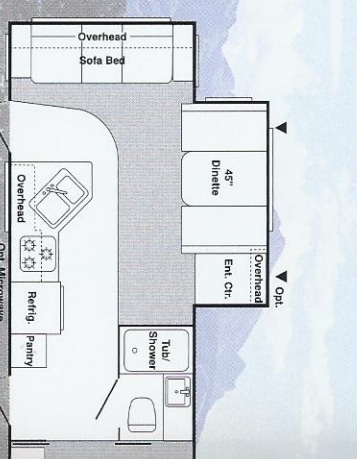
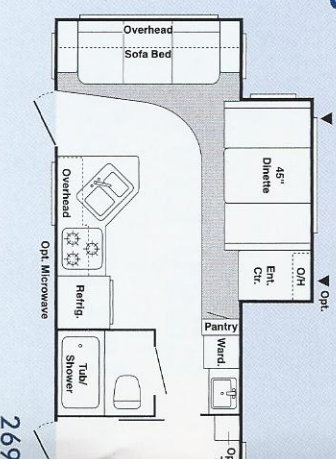
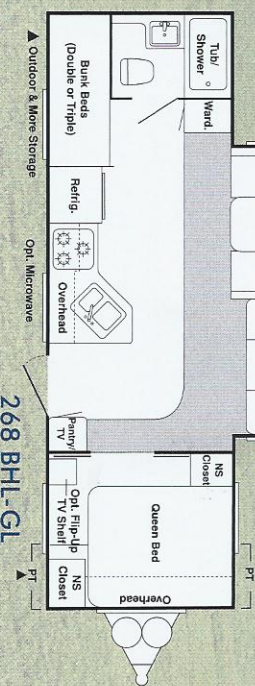
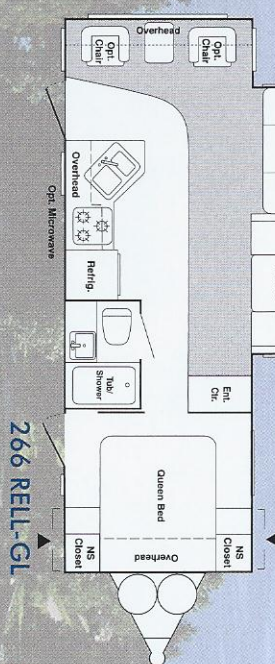
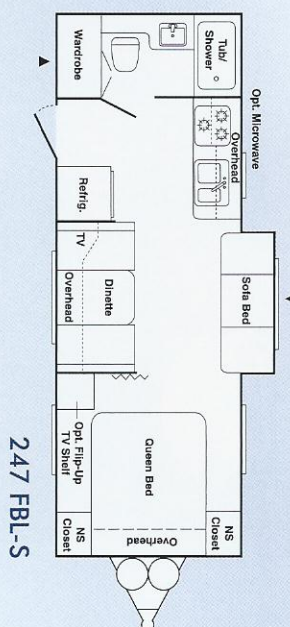
*It's a way of life...*



# Travel Trailers

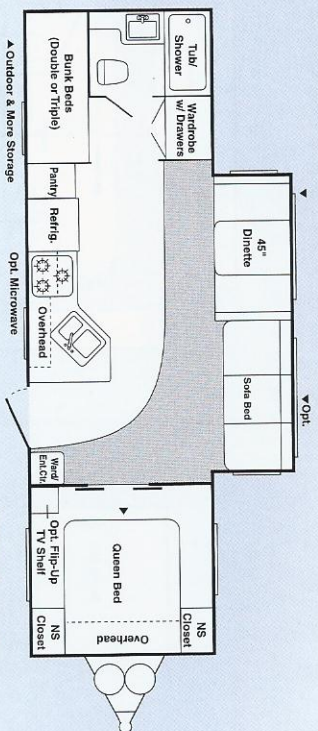
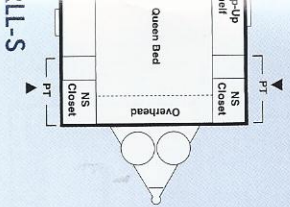


# Travel Trailers with Slide-Outs

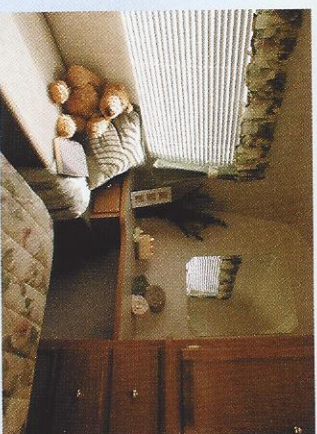


*Travel in comfort... Enjoy the trip... It's a way of life...*



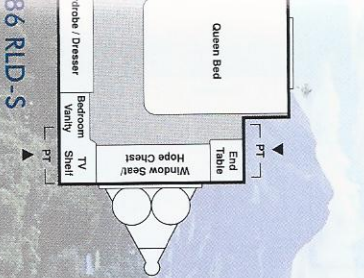


295 BHL-GL

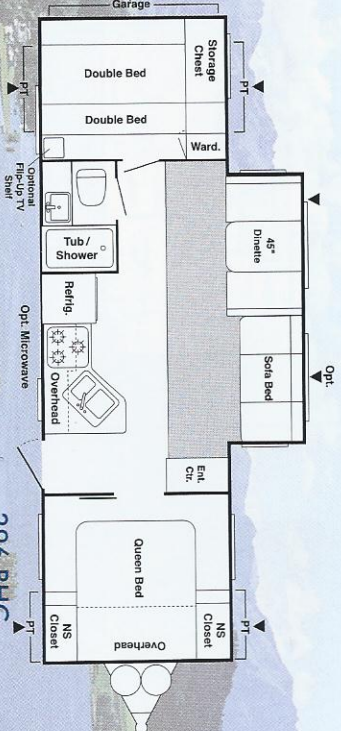


The 286 RLD-S features a "live-in" bedroom. Relax on the padded window seat and read, write, or just gaze at the scenery. Open the seat for complete access to the exterior pass-through storage space. Also, notice the vanity corner next to a 5-foot wide closet with four deep drawers underneath, creating a wall of storage.

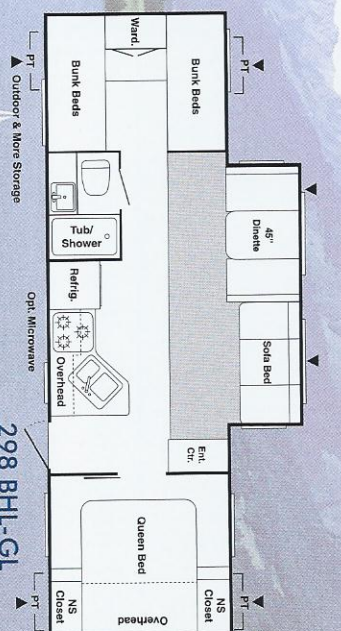
Every Springdale features this 60/40 deep bowl white sink with a matching white high-spout faucet. Now you can prepare food and clean large utensils quickly and conveniently. There's a tip-out utensil tray under the sink, too. The details that are important to you are important to us.



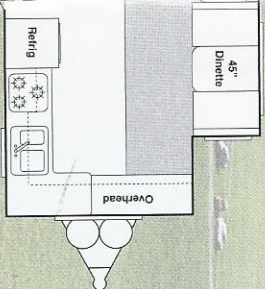
286 RLD-S



296 BHG



298 BHL-GL



290 FKL-GL

## TRAVEL TRAILERS

	Non Slide-Outs				With Slide-Outs										XL
	179 RD	189 FL	245 FBL	260 TBL	247 FBL-S	250 RKL-S	266 RELL-G	268 BHL-G	269 RLL-S	286 RLD-S	290 FKL-G	295 BHL-G	296 BHG	298 BHL-G	372 BHL-G
Gross Dry Weight* (UWV)	3520	3780	3956	4640	4490	4356	5480	5490	5460	6310	5970	5816	6320	6140	8210
Carrying Capacity	2480	2180	2064	3140	2950	3224	2120	2110	2100	3250	3870	3564	3260	3480	2970
Hitch	500	460	520	520	440	580	600	600	560	760	1040	580	780	820	1020
Dry Axle Weight	3220	3520	3660	4120	4240	4400	5000	5220	5180	5820	5220	5460	5740	5440	7540
Exterior Length	20' 9"	23' 7"	26' 5"	28' 6"	27' 2"	26' 11"	28' 10"	28' 7"	28' 9"	30' 11"	31' 11"	31' 5"	32' 11"	32' 2"	38' 9"
Exterior Width	8'	8'	8'	8'	8'	8'	8'	8'	8'	8'	8'	8'	8'	8'	8'
Exterior Height (Top of A/C)	10' 6"	10' 6"	10' 6"	10' 6"	10' 6"	10' 6"	11' 0"	11' 0"	11' 0"	11' 1"	11' 1"	11' 1"	11' 1"	11' 1"	11' 3"
Fresh Water Capacity	45	45	45	45	45	45	45	45	45	45	45	45	45	45	45
Waste Water Capacity	28	24	32	32	30	30	30	25	25	30	30	30	28	32	28
Grey Water Capacity	28	20	30	28	30	60	30	60	32	32	56	56	28	32	52
LPG Capacity (lb.)	40	40	40	40	40	40	40	40	40	40	40	40	40	40	40
Tire Size	14"	14"	14"	14"	15"	14"	15"	15"	15"	15"	15"	15"	15"	15"	15"
GVWR	6000	5960	6020	7520	7440	7580	7600	7600	7560	9560	9840	9380	9580	9620	11180

▼ = Storage

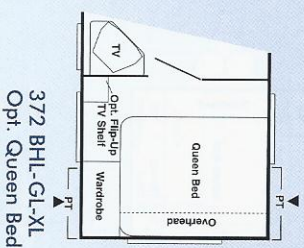
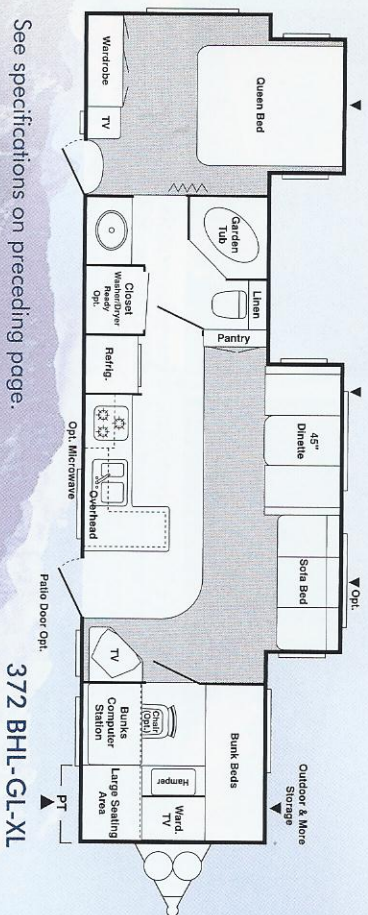
▼ Opt. = Optional Storage

\*Gross Dry Weight does not include options and fluids.

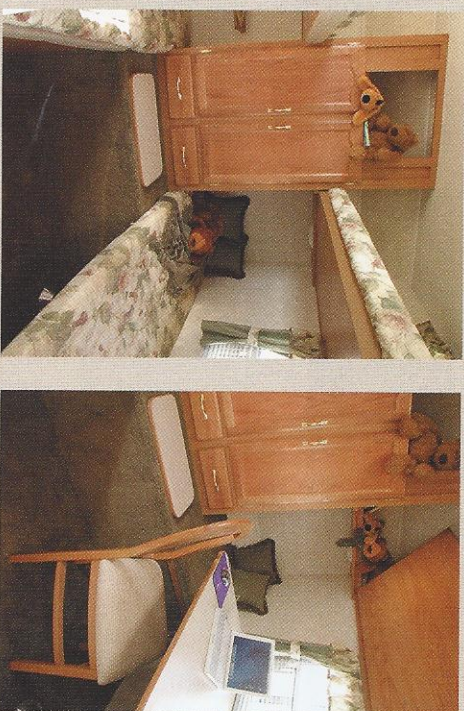
# SPRINGDALE



# Travel Trailers: Springdale XL



## Functional Floor-to-Ceiling Pantry

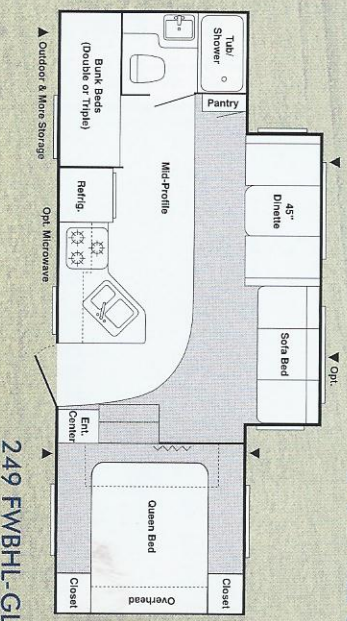
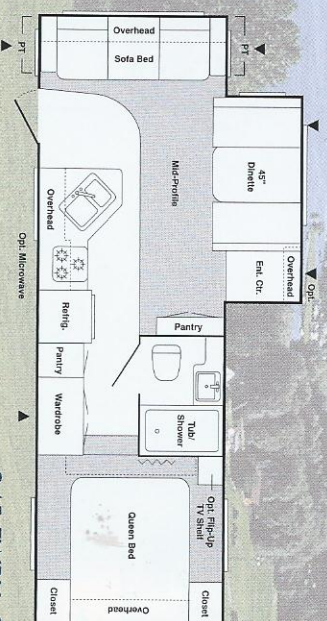
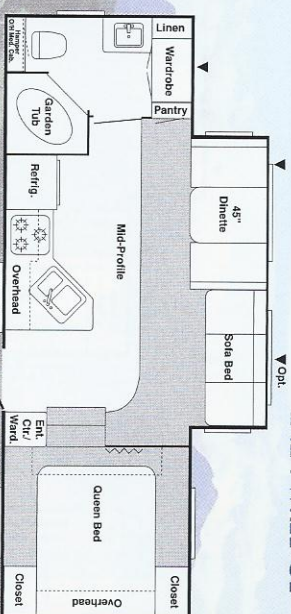
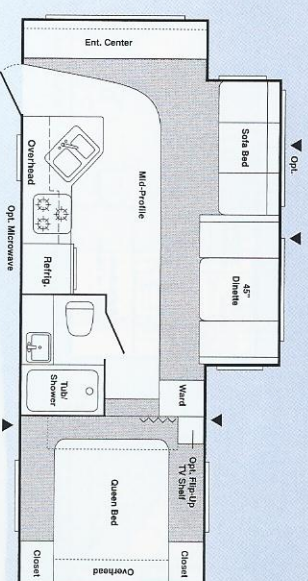


Four bunk beds make this bedroom in our 372 XL travel trailer great for large families or overnight guests. At left, all four bunks, complete with matching spreads, are ready for a night's rest. By day, as shown in right photo, the lower bunk converts into a hobby/computer station with a lounge area. All this, and storage, too!



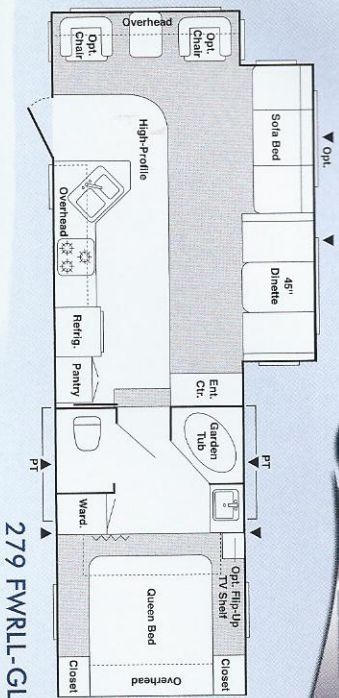
This large-capacity floor-to-ceiling pantry includes a tall compartment at the bottom for large packages and there's even room for a waste container. All your supplies will be in clear view and easy to reach.

# Fifth Wheels





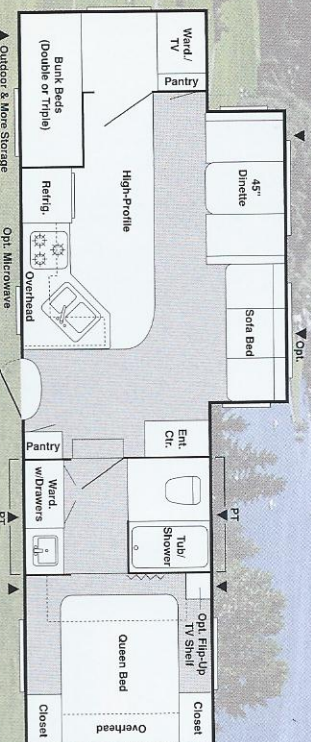
# SPRINGDALE



279 FWRL-GL



280 FWKL-GL



283 FWBHL-GL

This great idea is an example of the renowned attention to detail you'll find in all Keystone RV recreational vehicles. Springdale has located the dinette alongside the entertainment center in a medium-width slideout designed especially for our shorter models. This layout opens up floor space and creates a roomier feeling in the living area, found, until now, only in larger floor plans.



▼ = Storage

▼ Opt. = Optional Storage

FIFTH WHEELS	With Slide-Outs					
	242 FW REL-GL	244 FW RBL-GL	245 FW RLL-S	249 FW BHL-GL	279 FW RLL-GL	280 FW IKL-GL
Gross Dry Weight* (GVWR)	5760	5640	5316	5560	6760	6760
Carrying Capacity	2120	2320	2624	2320	3220	3180
Hitch	900	960	940	880	1240	1140
Dry Axle Weight	5120	5020	4620	4920	5880	5920
Exterior Length	24' 11"	26'	26' 11"	26' 0"	31' 8"	31' 0"
Exterior Width	8'	8'	8'	8'	8'	8'
Exterior Height (Top of A/C)	11' 4"	11' 4"	11' 4"	11' 4"	12' 2"	12' 2"
Fresh Water Capacity	45	45	45	45	45	45
Waste Water Capacity	32	28	28	24	28	28
Grey Water Capacity	28	28	28	60	60	60
LPG Capacity (lb.)	40	40	40	40	40	40
Tire Size	15"	15"	15"	15"	15"	15"
GVWR	7880	7960	7940	7880	10040	9940
						10080

\*Gross Dry Weight does not include options and fluids.

EVERY INCH  
OF THE SPRINGDALE  
IS DETAILED FOR CONVENIENCE AND  
EASE OF MAINTENANCE



# Features

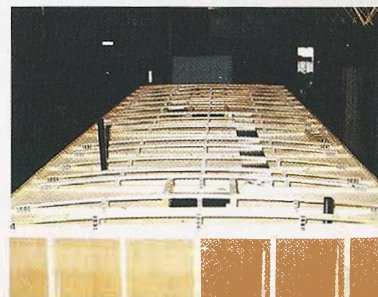
**Look at These Features  
Usually Found Only in  
Much Higher Priced RVs**

## Interior

- Innerspring Mattress
- Cathedral-Mortise & Tenon Jointed Cabinet Doors
- Quality Furniture By Mastercraft®
- 45" Wide Dinette Booths In all Slide-Outs
- Extra Large Overhead Cabinets
- All-Wood Drawers
- Large Pedestal Dinette Tables
- Fresh-Water Flush Toilet
- Overhead Medicine Cabinet w/Mirrored Door
- Wall Mounted Towel Bar
- 12 Volt Power Bath Roof Exhaust Vent

## Kitchen

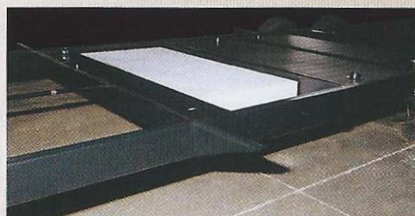
- Residential Kitchen Sink w/Deep 60/40 Basins and High Arch Faucet
- Large Overhead Cabinets
- Flip-down Silverware Storage Under Sink
- Wall-Mounted Systems Monitor Panel



Springdale utilizes crowned, residential-style, 4 1/2" truss rafters, shown here with air conditioning channels to accommodate our ducted roof/air option.

## Appliances/Equipment

- Dometic® Refrigerator
- Suburban 3-Burner, High Output Range
- Suburban Forced Air DSI Furnace with Thermostat
- Space Maker™ 45-gal. Capacity Under Floor Fresh Water System In a Heated Compartment (A Keystone exclusive)
- 6 Gal. LP Water Heater
- Range Hood with 12 Volt Light and Exhaust Fan
- In-Floor Rigid Heat Ducting
- Fire Extinguisher
- Smoke Detector



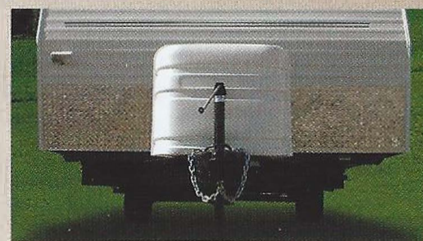
With Space Maker,™ storage space is greatly expanded by removing the freshwater tank from the interior of the unit. The Space Maker's location also lowers the center of gravity, improving towability. The heated compartment gives you added protection when cold-climate camping.



Pass-through storage is easily accessible from outside. With 48 cubic feet of available space, you can take all your favorite camping gear.

## Exterior

- 8' Exterior Width
- Hose Carrier Bumper w/ End Caps
- Fiberglass Insulation
- Entry Assist Handle
- Radius Clamp Ring Windows
- Rubber Roof
- Hickory E-Z Open Entry Step
- Rain Gutters



Your Springdale is safe from nicks or scratches from stones or gravel, thanks to our protective diamond plate, now an available option on all travel trailers with aluminum exteriors.

# SPRINGDALE



Available on most bunk models, Outdoor & More™ storage features an extra-high and wide exterior access door. With the lower bunk raised, you have an amazing 60 cubic feet of storage for all your bulkiest gear from bikes to barbecues, and with the bunk down, you can even pass large items in and out of the interior living area.

## Dollar for Dollar, the Best Value on the Market Today!

Springdale travel trailers and fifth wheels are manufactured at our facilities in Goshen, Indiana, and Pendleton, Oregon. Among our product lines, Springdale has evolved to become our greatest value in towables, especially for young families, or anyone who requires a lot of space at an economical price. We take pride in each model we deliver. Each Springdale is made with care and craftsmanship. Springdale has become one of North America's best selling lines of recreational vehicles because it offers so many features at such a good price. This quality has earned Springdale national recognition as a value leader among all products in the U.S. marketplace today. Springdale, "More for your dollar."

**SPRINGDALE** IS A PRODUCT OF:



**17400 Hackberry Drive Goshen, Indiana 46526**  
**(574) 535-2100 www.keystone-springdale.com**

Product information and photography are as accurate as possible at the time of publication. Colors and finishes are photographic representations and may appear differently when viewing actual materials. Some features shown are optional. Features, prices and specifications are subject to change without notice. 11/03

## Popular Options

- Smooth Fiberglass Exterior
- A&E Awning
- Duo Therm Air Conditioner
- Dometic Microwave
- Outside Shower
- AM/FM Stereo w/Cassette
- AM/FM Stereo w/CD Player
- Patio Door (XL Floorplans)
- Residential Refrigerator (XL Floorplans)

Your **SPRINGDALE** Dealer:

Colton RV & Marine  
3122 Niagara Falls Blvd.  
North Tonawanda, NY 14120  
(716) 694-0188  
www.ColtonRV.com

Colton RV  
489 Bushkill Plaza LN #9665  
Wind Gap, PA 18091  
(610) 863-5239  
www.ColtonRV.com

